

DM - TF-138, Elev 308.081, C.S.F.B. 1734 Pg. 101  
 Bayse St (N. side), 650' W of Elrovie Ave.  
 Bl. spk. in curb (24' W of E. end) in  
 front of house number 11409.

NO CHARGE  
 FOR CONNECTIONS  
*B.M. Caldwell 5-23-59*

### TEMPLE CITY BLDG. DIST. NO. 5

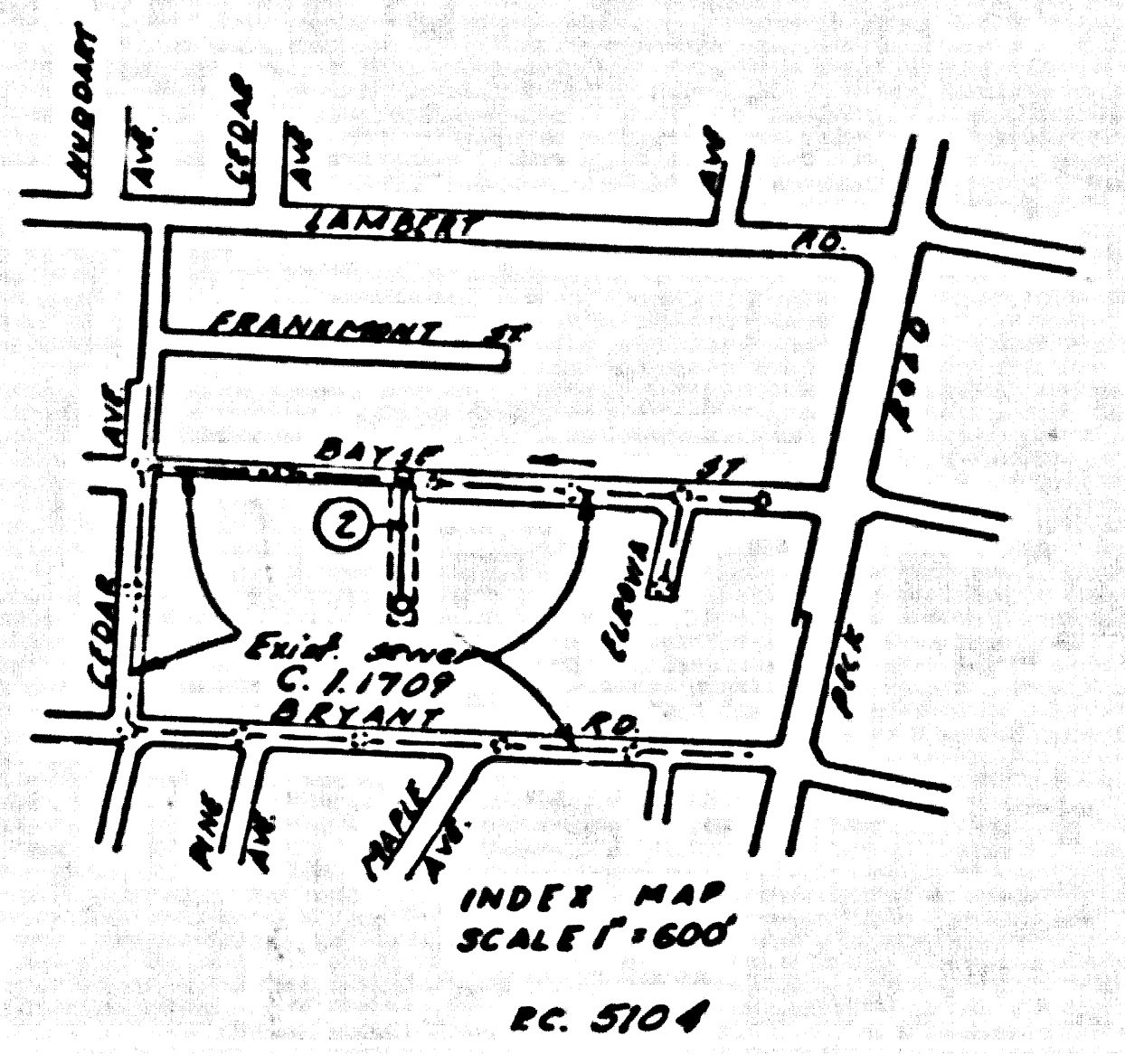
- NOTES
1. PROVIDE STAKES ON THE PROPERTY LINE OR PROPERTY LINES PRODUCED AT RIGHT ANGLES TO THE SEWER LINE AT THE CENTER LINE OF EACH BRANCH.
  2. NO REPRESENTATIVE OF THE COUNTY ENGINEER WILL SURVEY OR LAY OUT ANY PORTION OF THE WORK.
  3. THE OWNER OR HIS AUTHORIZED REPRESENTATIVE SHALL FURNISH THE COUNTY ENGINEER WITH GRADE SHEETS AND STATIONING FOR ALL HOUSE LATERALS AND Y BRANCHES AND SHALL PROVIDE STAKES FOR THEM AT THEIR PROPE LOCATIONS WITH STATIONING PLAINLY MARKED. ANY CHANGE IN LOCATION SHALL BE REQUESTED IN WRITING BY THE OWNER OR HIS REPRESENTATIVE.
  4. THE PRIVATE ENGINEER SHALL FURNISH THE HOUSE LATERAL DEPTH AT THE PROPERTY LINE BELOW THE TOP OF CURB ELEVATION FOR EACH HOUSE LATERAL ON THE GRADE SHEET.
  5. NO ADJUSTMENTS SHALL BE MADE IN THESE PLANS WITHOUT THE APPROVAL OF THE COUNTY ENGINEER.
  6. USE STANDARD MANHOLE FRAMES AND COVERS, S-117.
  7. USE STANDARD STRENGTH PIPE, S-127.
  8. USE CEMENT MORTAR OR "WEDGE-LOCK" OR "FRIB-SEAL" FOR ALL V.C.P. JOINTS PER SPEC., SECT. B & C.
  9. RESURFACE ALL TERRACE WITHIN PAVED AREA TO MEET L.A. COUNTY ROAD DEPT. OF CALIF. STATE HIGHWAY DEPARTMENT IN ACCORDANCE WITH PERMITS.
  10. ENCASE FOUR FEET OF SEWER AT POINTS OF INTERFERENCE WITH POLES, CASE NO. S-172.
  11. HOUSE LATERALS TO BE CONSTRUCTED WITH INVERTS AT PROPERTY LINE FIRST BELOW CURB GRADE EXCEPT AS NOTED.
  12. ALL STRUCTURES SHALL BE BRICK SEWER STRUCTURES, S-116.
  13. FOR ALLOWABLE SEWAGE TEST USE FORMULA NO. 2-104, SPEC'S, SEC. 54.
  14. MANHOLE TOPS IN UNIMPROVED RIGHTS-OF-WAY TO BE LEVEE WITH FINISHED GRADE.
  15. THE CONTRACTOR SHALL NOTIFY THE CONSTRUCTION & STORM DRAIN DIVISION BY TELEPHONE, MARSHON 9-870, EXT. 343, AT LEAST TWENTY-FOUR HOURS BEFORE STARTING ANY WORK UNDER THIS CONTRACT.

PROFILE ALIGNMENT AND GRADE OF **P.C. 5104**  
**SANITARY SEWERS** PAGE 1  
 TO BE CONSTRUCTED IN **J.N. 0350.56**  
**SANITARY SEWER R/W** **27970**  
**EAST OF CEDAR AVENUE** **711**

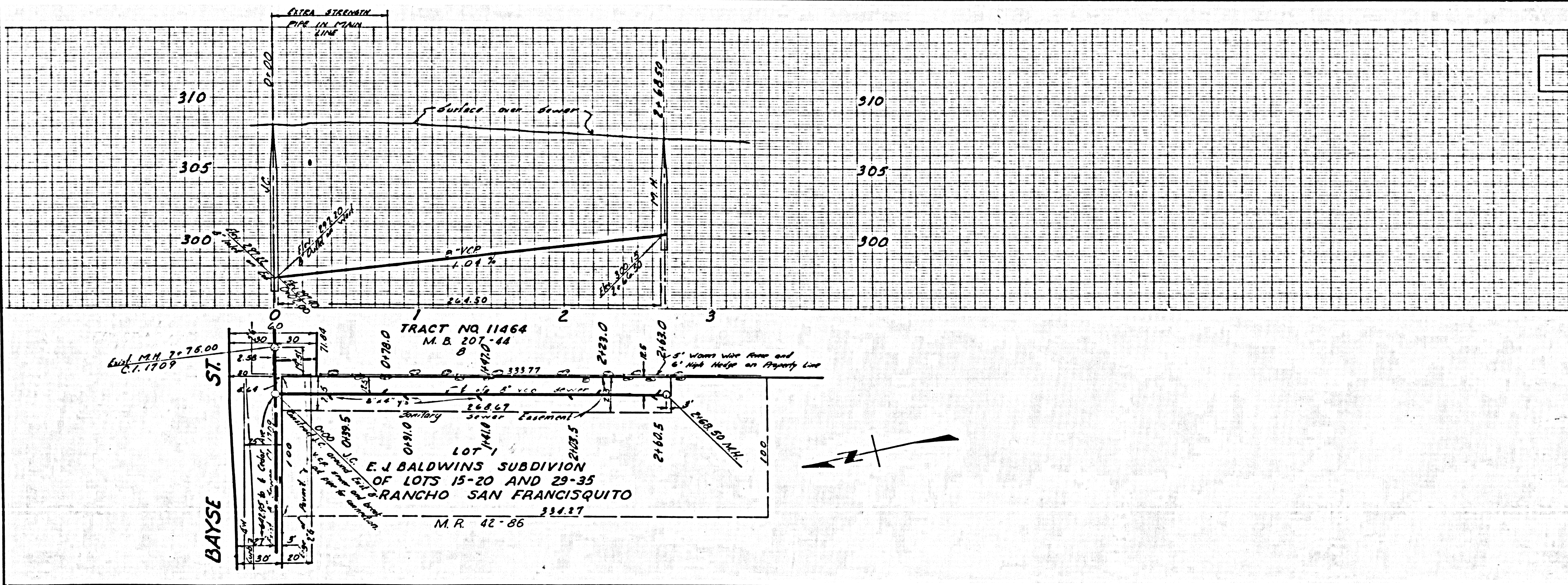
PRIVATE CONTRACT NO. 5104  
 W.S. 46  
 1 SHEET, 2 PAGES  
 SCALE: VERT. 1" = 4' HORIZ. 1" = 40'  
 MARCH, 1959  
 PREPARED IN THE OFFICES OF

*Clarence P. Hennessey*  
 REG. C. E. NO. 2132  
 FOR LEGEND SEE PLAN NO. S-A-64

NOTES  
 GRADES TO WHICH THIS IMPROVEMENT IS TO BE CONSTRUCTED ARE SHOWN ON PLANS AND PROFILE. GRADE POINTS FOR TOP OF CURB, CENTER LINE OF STREETS, OR CENTER LINE OF ALLEYS ARE SHOWN BY CIRCLES ON PROFILES. AT ALL POINTS BETWEEN DESIGNATED POINTS THE GRADE SHALL BE ESTABLISHED SO AS TO CONFORM TO A STRAIGHT LINE DRAWN BETWEEN SAID DESIGNATED POINTS.  
 ELEVATIONS ARE IN FEET ABOVE U.S.C. & G.S. SEA LEVEL DATUM OF 1929.  
 THIS DRAWING AND THE DATA HEREON ARE HEREBY MADE A PART OF THE SPECIFICATIONS.  
 BEFORE WORK CAN BE STARTED, THE CONTRACTOR MUST OBTAIN A PERMIT TO EXCAVATE IN THE COUNTY ENGINEER AND SHALL BE PROSECUTED ONLY IN THE PRESENCE OF THE COUNTY ENGINEER.  
 BEFORE WORK CAN BE STARTED, THE CONTRACTOR MUST OBTAIN A PERMIT TO EXCAVATE IN THE COUNTY ENGINEER AND SHALL BE PROSECUTED ONLY IN THE PRESENCE OF THE COUNTY ENGINEER.  
 BEFORE WORK CAN BE STARTED, THE CONTRACTOR MUST OBTAIN A PERMIT TO EXCAVATE IN THE COUNTY ENGINEER AND SHALL BE PROSECUTED ONLY IN THE PRESENCE OF THE COUNTY ENGINEER.  
 APPROVAL OF THIS PLAN BY THE COUNTY OF LOS ANGELES DOES NOT CONSTITUTE A REPRESENTATION AS TO THE ACCURACY OF THE LOCATION OF OR THE EXISTENCE OR NON-EXISTENCE OF ANY UNDERGROUND UTILITY PIPE, OR STRUCTURE WITHIN THE LIMITS OF THIS PROJECT. THIS NOTE APPLIES TO ALL PAGES.  
 IF WORK IS TO BE DONE BY A STATE HIGHWAY, A PERMIT MUST BE OBTAINED FROM THE STATE OF CALIFORNIA, DIVISION OF HIGHWAYS, 128 SOUTH SPRING STREET.



COUNTY OF LOS ANGELES, CALIFORNIA  
 APPROVED, JOHN A. LAMBE, COUNTY ENGINEER  
 APPROVED, E. E. COOPER, CHIEF ENGINEER  
 BY *John A. Lamb* SANITATION ENGINEER  
 BY *E. E. Cooper* CHIEF ENGINEER  
 CHECKED BY *W. J. Wicks*  
 OFFICE OF COUNTY ENGINEER, SAN. C. E. NO. 9406  
 SUBMITTED *N. P. Brander*  
 SAN GABRIEL VALLEY REGIONAL ENGINEER



NO CHARGE  
 FOR CONNECTIONS

27970