

INDEX MAP  
TRACT NO. 24423  
Scale: 1"=400'  
P.C. 5105

**BENCH MARK**  
County Surveyors B.M. U.S.C.G.S. 514  
Disk stamped 0-786-1946, 50'  
Flush with ground 45.2' North of E.  
of Palms Verdes Drive North 47.4'  
East of E. of Narbonne Ave.  
Elev. = 355.518

**NOTE:**  
County Surveyors B.M. 36-2, County Precise  
Survey 1853 Adj. Elev. 355.583  
Add 0.065 to all elevations shown hereon  
to agree with 1953 adjustment.

NO CHARGE FOR  
CONNECTIONS  
W. Trunk 11-5-58

LOMITA BLDG. DIST. NO. 7.1

- NOTES:**  
PROFILES SHOWN ON THE PROPERTY LINE OR PROPERTY LINE PRODUCED AT SOME ANGLES TO THE SEWER LINE AT THE CENTER LINE OF EACH MANHOLE.  
NO REPRESENTATIVE OF THE COUNTY ENGINEER SHALL SURVEY OR LAY OUT ANY PORTION OF THE WORK.  
THE OWNER OR HIS AUTHORIZED REPRESENTATIVE SHALL FURNISH THE COUNTY ENGINEER WITH GRADE SHEETS AND STATION FOR ALL HOUSE LATERALS AND Y BRANCHES AND SHALL PROVIDE STAKES FOR THEM AT THEIR PROPER LOCATIONS WITH STATION AND PLANT MARKS. ANY CHANGE IN LOCATION SHALL BE REQUESTED BY WRITING BY THE OWNER OF THE REPRESENTATIVE.  
NO EVIDENCE SHALL BE MADE IN THESE PLANS WITHOUT THE APPROVAL OF THE COUNTY ENGINEER.  
1. USE STANDARD MANHOLE FRAMES AND COVERS, 6-6-17, EXCEPT AS NOTED.  
2. USE STANDARD STRENGTH PIPE EXCEPT AS NOTED.  
3. USE CEMENT MORTAR OR "NEOP-LON" OR "SAPER-REAL" FOR ALL UTILITY CLAY PIPE JOINTS PER SPEC'S, SECT. 20-4-48.  
4. SURFACE ALL TRENCH WITHIN PERMITS AREA TO MEET L.A. COUNTY ROAD DEPT., OR CALIF. STATE HIGHWAY DEPT. REQUIREMENTS IN ACCORDANCE WITH PERMITS.  
5. SPECIFY FOUR FEET OF SEWER AT POINTS OF INTERFERENCE WITH POLES, 8-2-70, CASE 27.  
6. HOUSE LATERALS TO BE CONSTRUCTED WITH INVERTS AT PROPERTY LINE. 6 FEET BELOW CURB GRADE EXCEPT AS NOTED.  
7. ALL STRUCTURES SHALL BE BUILT BY STRUCTURES, 8-4-104, EXCEPT AS NOTED.  
8. FOR ALLOWABLE SLOPES USE FORMULA NO. 1, SPEC'S, SEC. 20.  
9. MANHOLE TOPS IN UNIMPROVED PORTS OF WAY TO BE 6" ABOVE FINISHED GRADE.  
10. THE PRIVATE ENGINEER IS TO FURNISH THE HOUSE LATERAL SHEET AT THE PROPERTY LINE SHOWING THE TOP OF CURVE ELEVATION (I.E. 5' BELOW FINISHED GRADE) ON THE GRADE SHEET.  
11. THE CONTRACTOR SHALL NOTIFY THE CONSTRUCTION AND STORM DRAIN DIVISION BY TELEPHONE, HARBOR 9-89, EXT. 202, AT LEAST 24 HOURS BEFORE STARTING ANY WORK UNDER THE CONTRACT.  
12. NO CONSTRUCTION SHALL BE PERMITTED IN FILLED AREAS UNLESS ACCEPTABLE CERTIFICATION IS SUBMITTED TO THE CONSTRUCTION DIVISION OF THE COUNTY ENGINEER'S DEPARTMENT THAT COMPACTING IS GREATER THAN 80%.  
13. IF CHARACTER IS LESS THAN 80%, THE SEWER MUST BE GRADED AS SHOWN ON PLAN.  
14. ALL CONSTRUCTION IN GREATER THAN 80% COMPACTING AND SPECIAL INCLUSIVE DICES ARE NOT REQUIRED.  
15. NUMBER, JOINT COMPANIES MUST BE SUBSTITUTED FOR EXISTING MATERIAL FOR ALL JOINTS IN FILLED AREAS.  
16. ALL ALL PIPE JOINTS SHALL VERTICAL CURVES WITH 4" OF CEMENT MORTAR.  
THE CONTRACTOR SHALL OBTAIN A PERMIT FROM THE CITY OF PALMS VERDES ESTATES BEFORE EXCAVATING IN CITY STREETS.

ENGINEERING SERVICE CORPORATION  
1127 W. WASHINGTON BLVD. R.L. 9-7281  
LOS ANGELES 15, CALIF.

REVISIONS	TRACED BY <u>C.M.R. &amp; B.B.</u>				
	DES'G'D BY <u>C.M.R. &amp; B.B.</u>				
	CK'D BY _____				
	SUBMITTED _____				
SUB STRUCTURES OK'D _____					
W. O. NO.	DWG. NO.	DATE	SCALE	L.S.	P.D.
6681-91		FEB. 1959	As Noted	992	

PROFILE ALIGNMENT AND GRADE OF  
**SANITARY SEWERS**  
TO BE CONSTRUCTED IN  
**TRACT NO. 24423**

PRIVATE CONTRACT NO. 5105

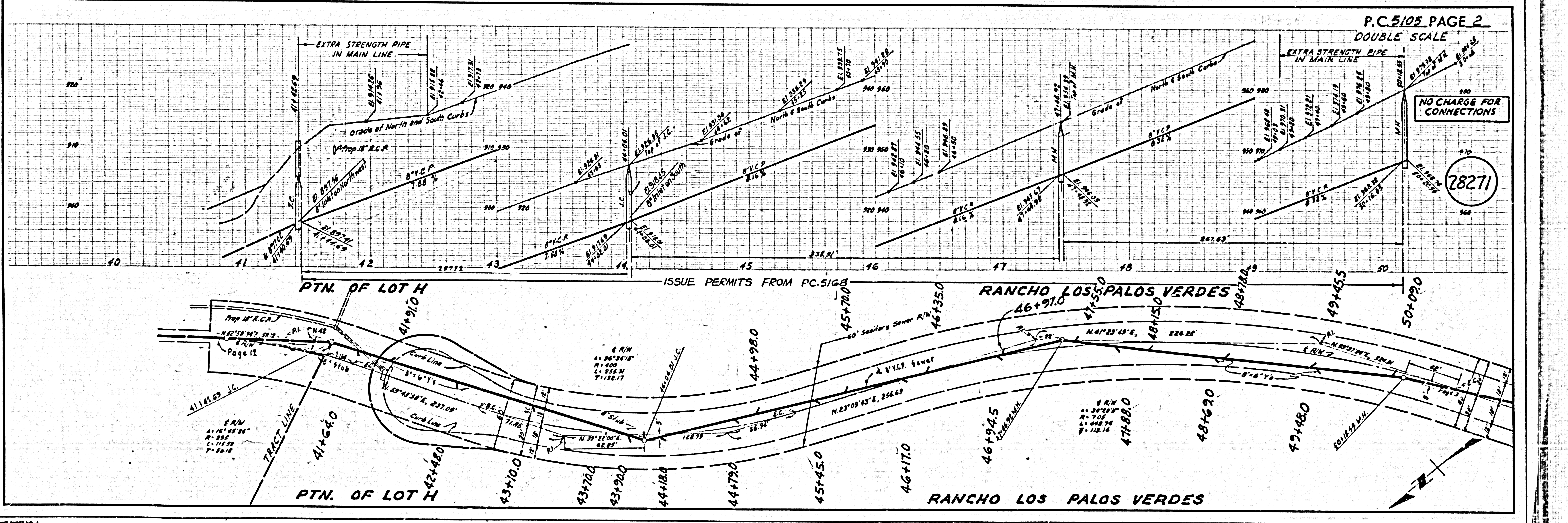
W.S. 27  
6 SHEETS, 2 PAGES  
SCALE: VERT. 1"=4' HORIZ. 1"=40' FEB. 1959

28270

ENGINEERING SERVICE CORPORATION  
FOR LEGEND SEE PLAN NO. S-A-44

**NOTES:**  
GRADE TO WHICH THIS IMPROVEMENT IS TO BE CONSTRUCTED AND SHOWN ON PLANS AND PROFILES. GRADE POINTS FOR TOP OF CURVE, CENTER LINE OF STREETS, OR CENTER LINE OF ALLEYS ARE SHOWN BY CIRCLES ON PROFILES. AT ALL POINTS BETWEEN DESIGNATED POINTS THE GRADE SHALL BE ESTABLISHED SO AS TO CONFORM TO A STRAIGHT LINE DRAWN BETWEEN SAID DESIGNATED POINTS.  
ELEVATIONS ARE IN FEET ABOVE U.S.C. & G.S. 1929 LEVEL, DATUM OF PACIFIC HARBOR.  
THE DRAWING AND THE DATA HEREON ARE HEREBY MADE A PART OF THE SPECIFICATIONS.  
WORK SHALL BE CONSTRUCTED ACCORDING TO SPECIFICATIONS ON FILE IN THE OFFICE OF THE COUNTY ENGINEER AND SHALL BE PROCEEDED ONLY IN THE PRESENCE OF THE COUNTY ENGINEER.  
BEFORE WORK CAN BE STARTED, THE CONTRACTOR MUST OBTAIN A PERMIT TO EXCAVATE IN COUNTY STREETS FROM THE L.A. COUNTY ROAD DEPT. (DIV. 27) AND MAKE A DEPOSIT WITH THE COUNTY ENGINEER \$500 PER AMERICAN STANDARD 215 30" BROADWAY EXCEPT TO COVER THE COST OF CONSTRUCTION INSPECTION AND INCOME TAXES.  
APPROVAL OF THIS PLAN BY THE COUNTY OF LOS ANGELES DOES NOT CONSTITUTE A REPRESENTATION AS TO THE ACCURACY OF THE LOCATION OR THE ELEVATION OR NON-EXISTENCE OF ANY UNDERGROUND UTILITY PIPE OR STRUCTURE WITHIN THE LIMITS OF THIS PROJECT. THIS NOTE APPLIES TO ALL PAGES.  
IF WORK IS TO BE DONE IN A STATE HIGHWAY, A PERMIT MUST BE OBTAINED FROM THE STATE OF CALIFORNIA, DIVISION OF HIGHWAYS, 120 SOUTH SPRING STREET.

COUNTY OF LOS ANGELES, CALIFORNIA  
APPROVED, JOHN A. LAMBE, COUNTY ENGINEER  
APPROVED, A. M. BAWN, CHIEF ENGINEER  
BY [Signature] BY [Signature]  
SANITATION ENGINEER OFFICE ENGINEER  
CHECKED BY [Signature]  
OFFICE OF COUNTY ENGINEER, 300 S. G. & W. 12-652  
APPROVED, CITY OF PALMS VERDES ESTATES  
BY [Signature]  
ASSIST. CITY ENGINEER



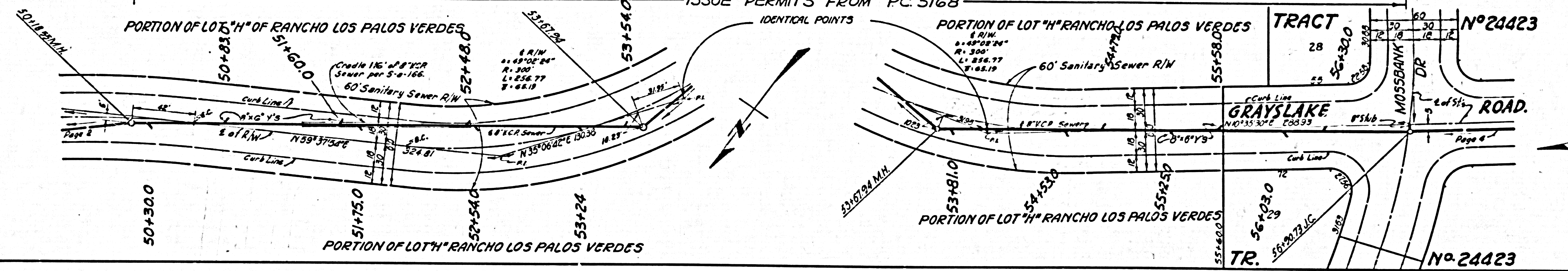
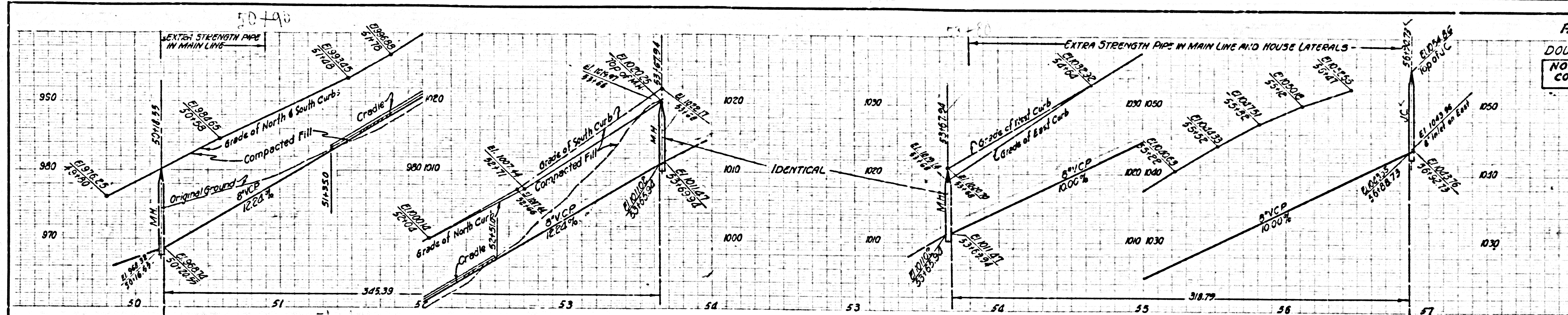
P.C. 5105 PAGE 2  
DOUBLE SCALE

NO CHARGE FOR  
CONNECTIONS

28271

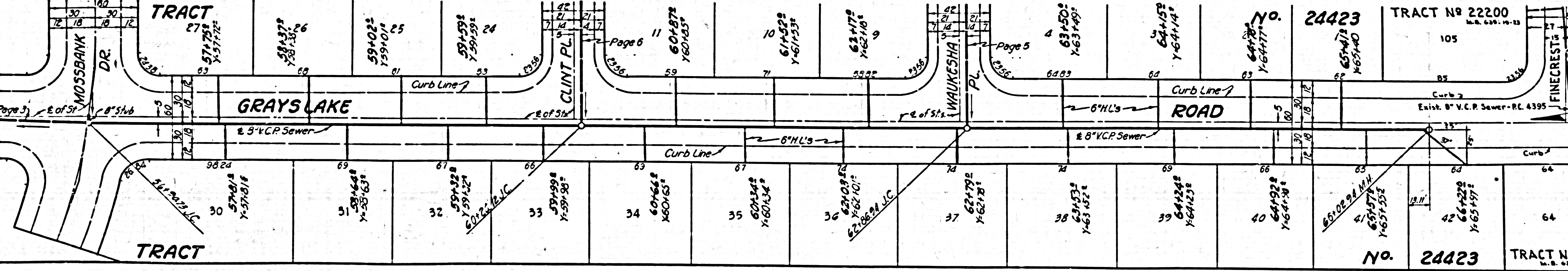
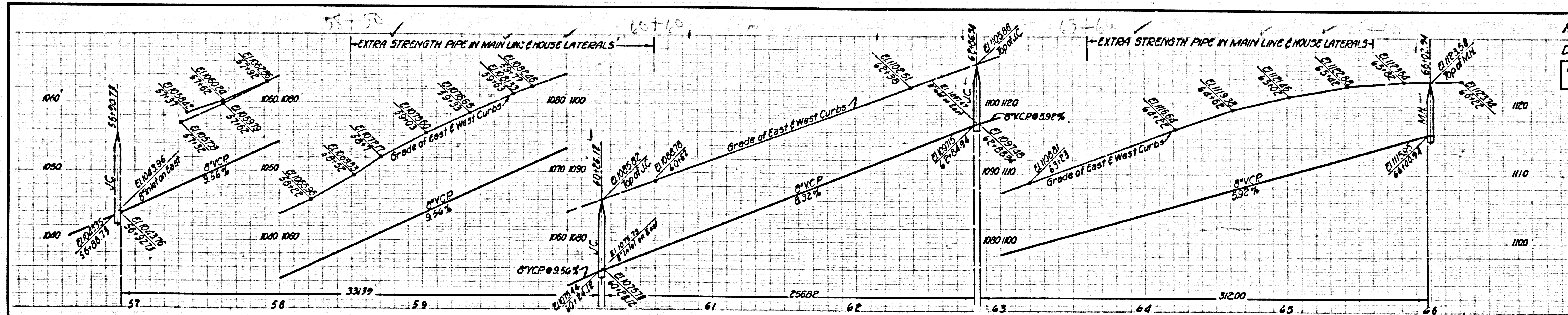
DOUBLE SCALE  
NO CHARGE FOR  
CONNECTIONS

28272



DOUBLE SCALE  
NO CHARGE FOR  
CONNECTIONS

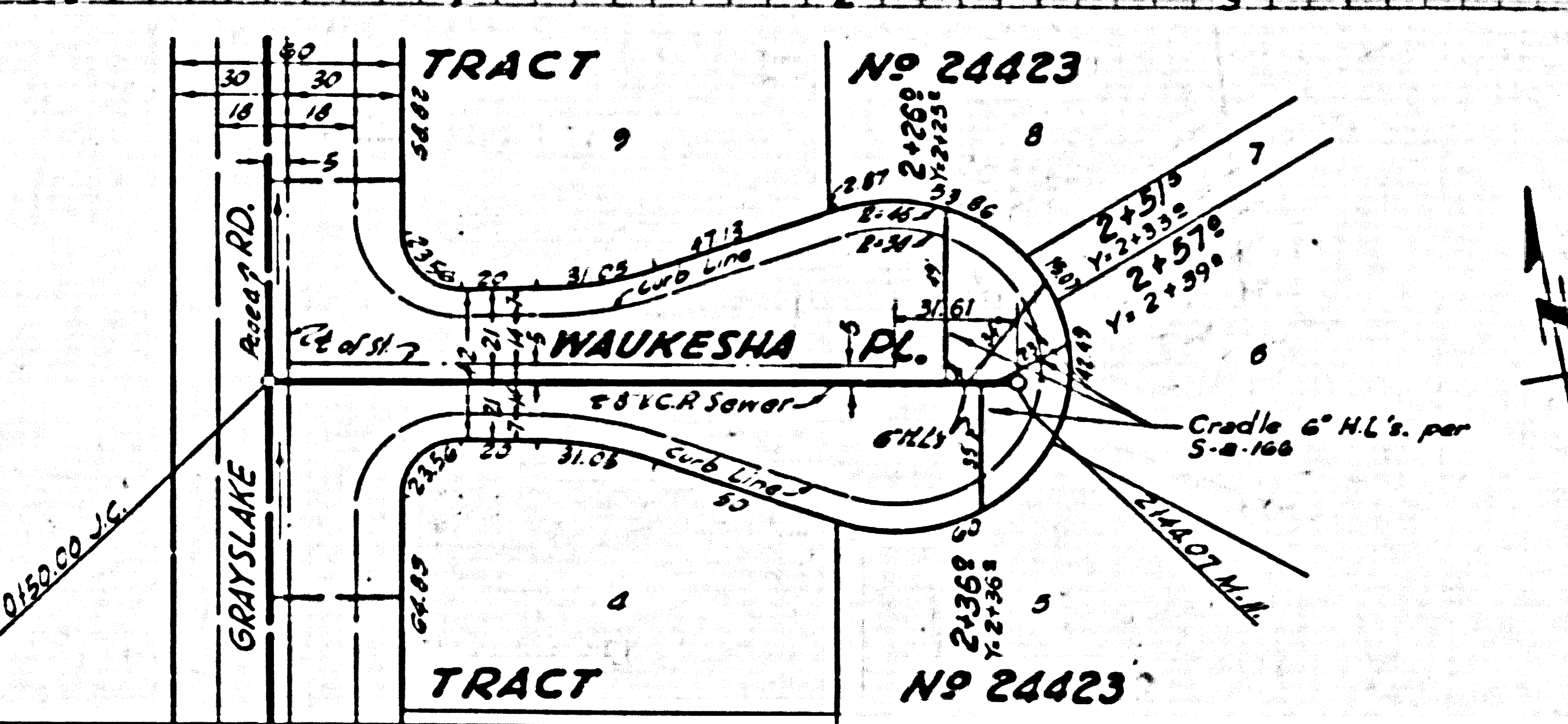
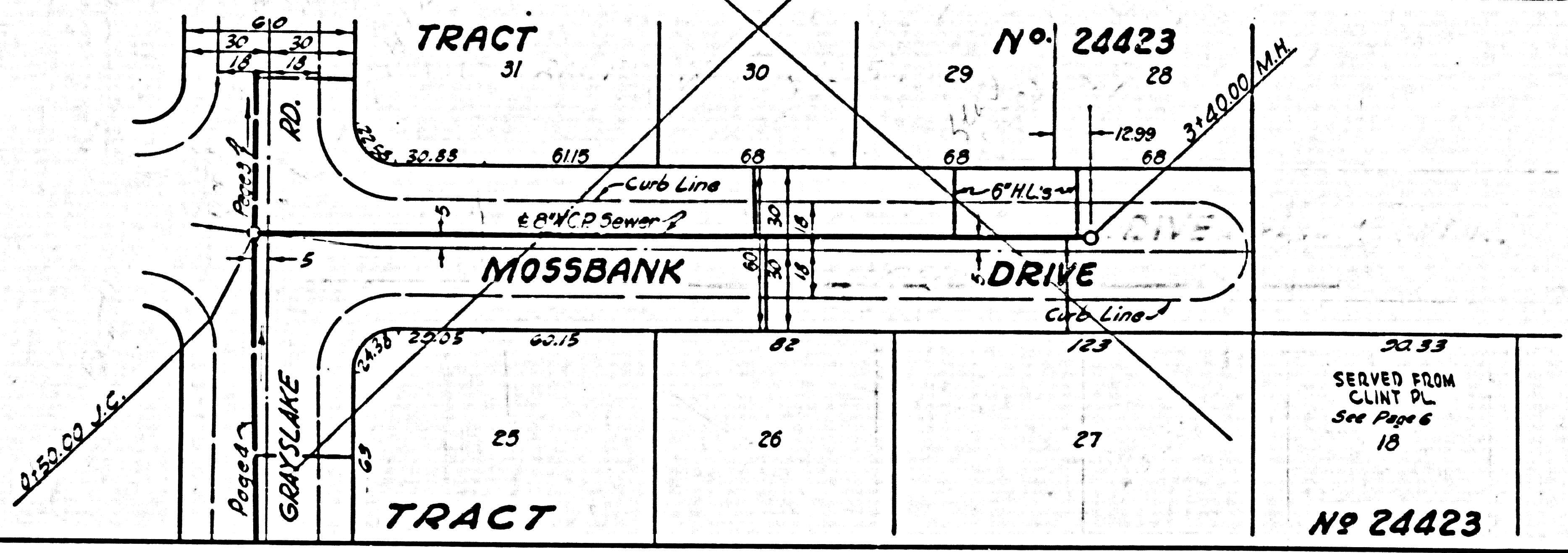
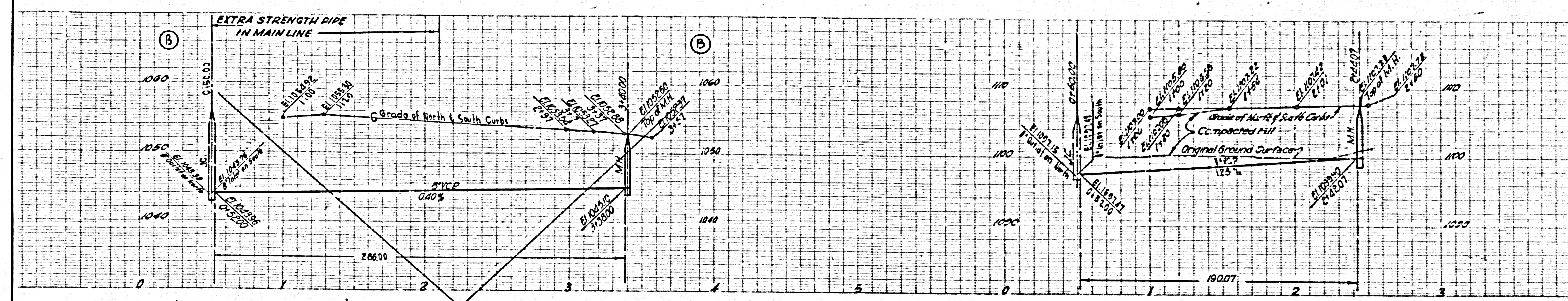
28273



DOUBLE SCALE

NO. CHARGE FOR CONNECTIONS

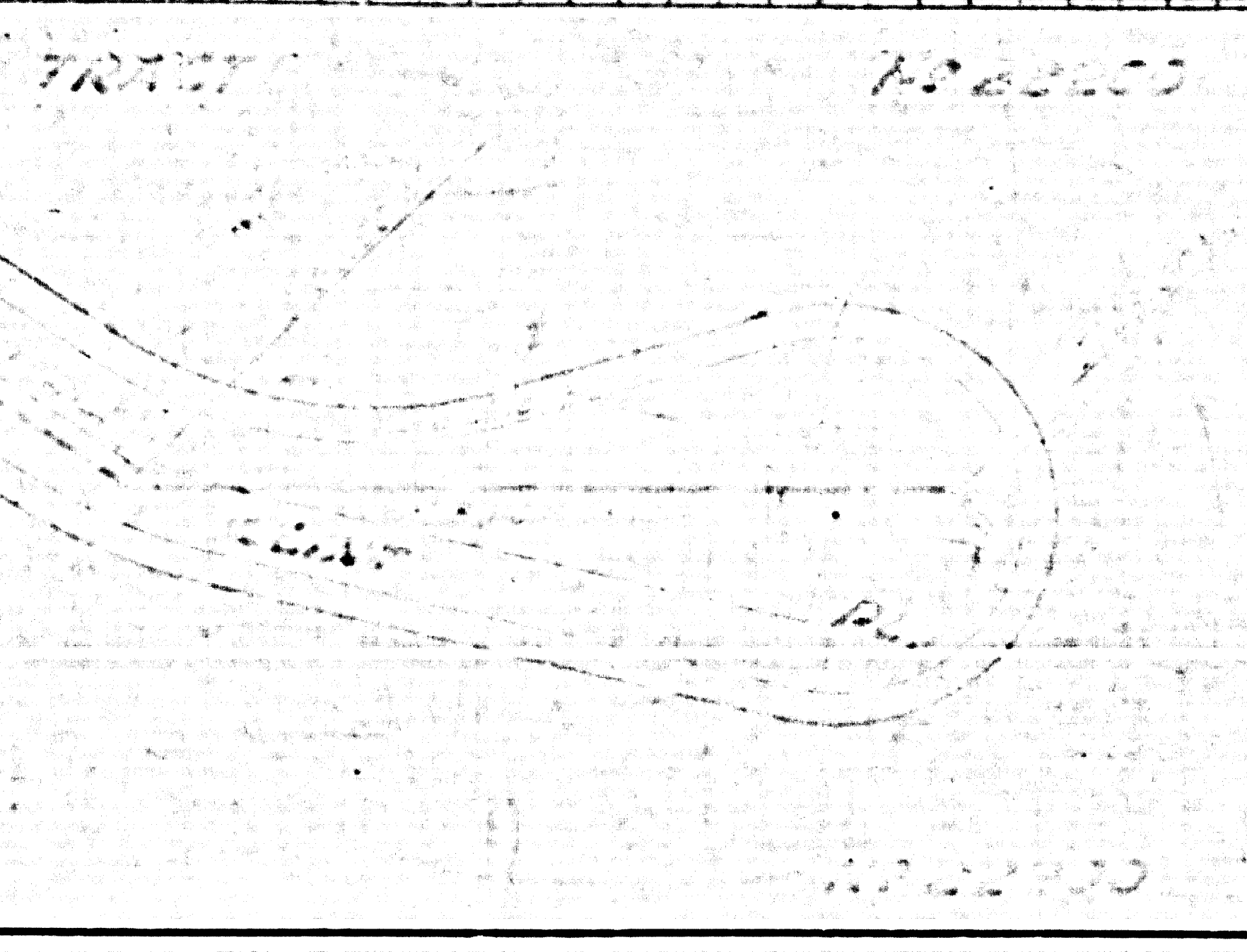
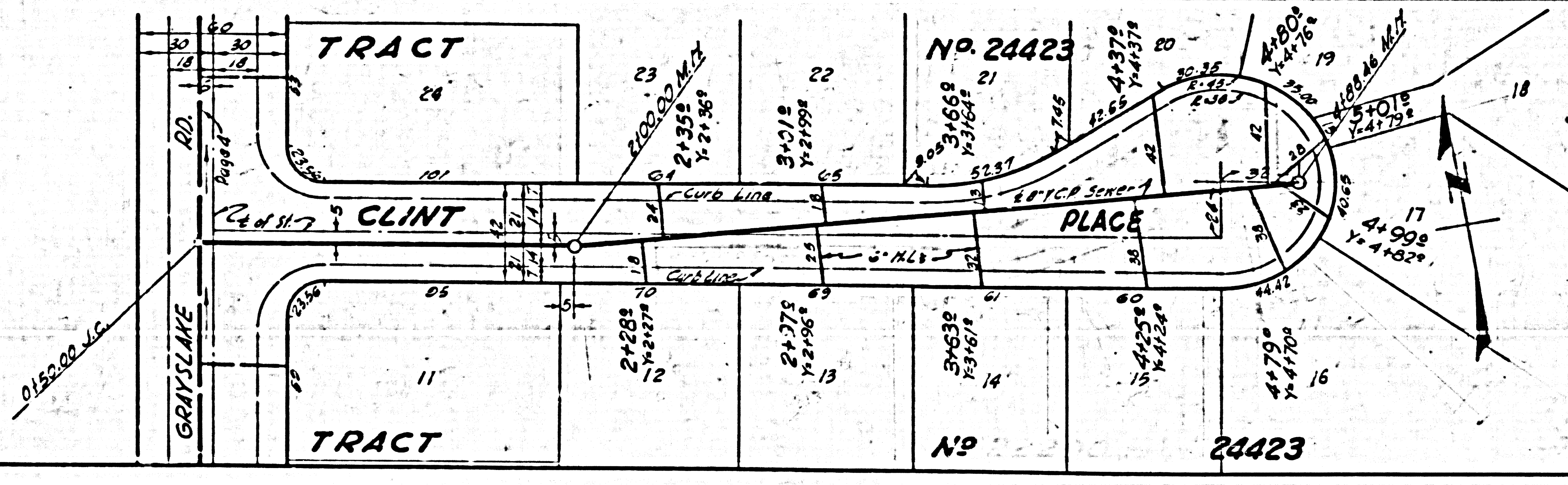
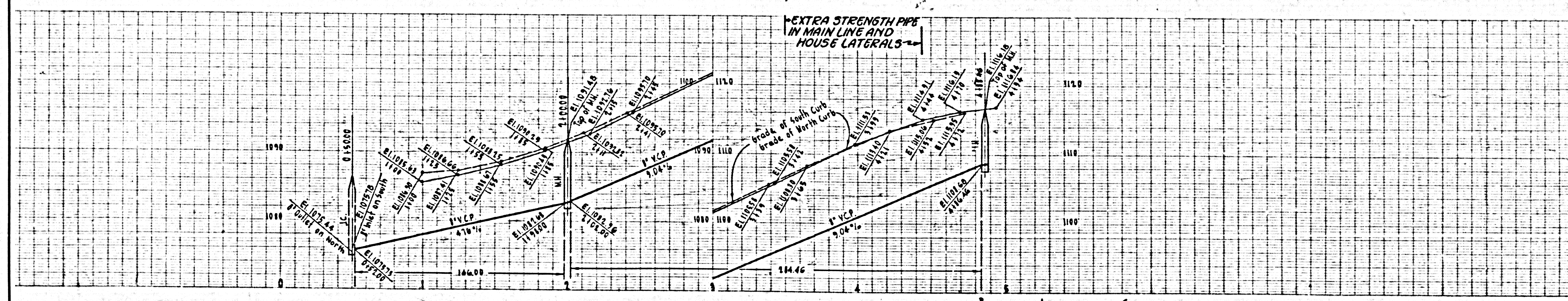
28274



DOUBLE SCALE

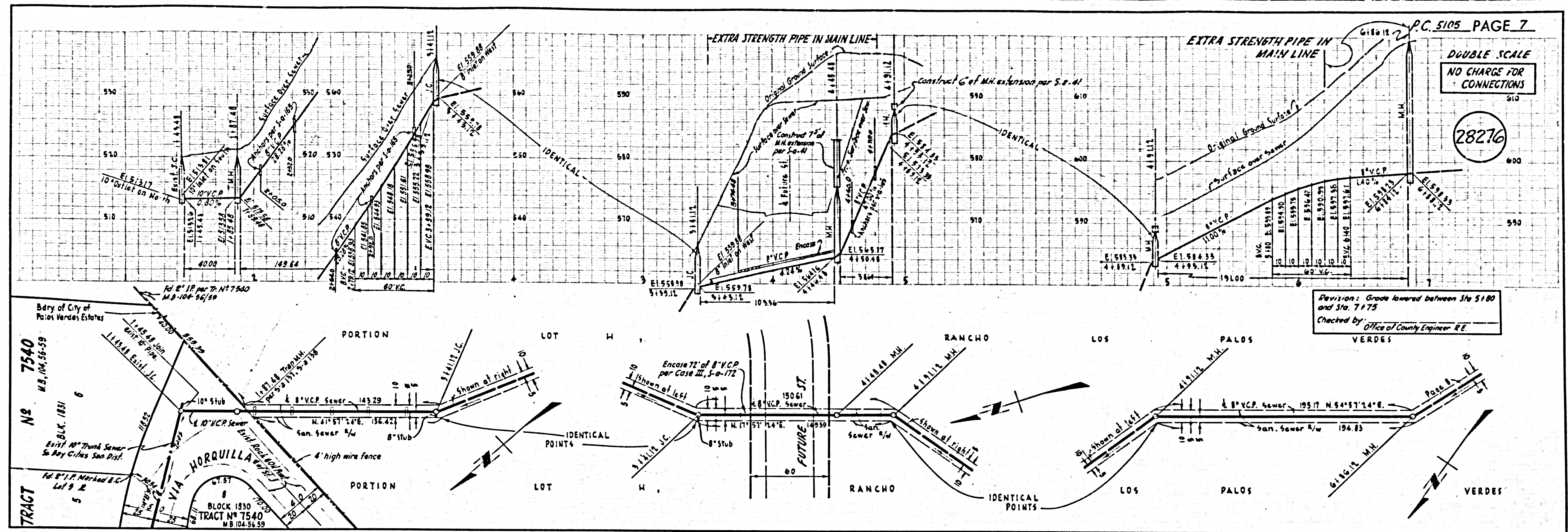
NO. CHARGE FOR CONNECTIONS

28275



DOUBLE SCALE  
NO CHARGE FOR  
CONNECTIONS

28276

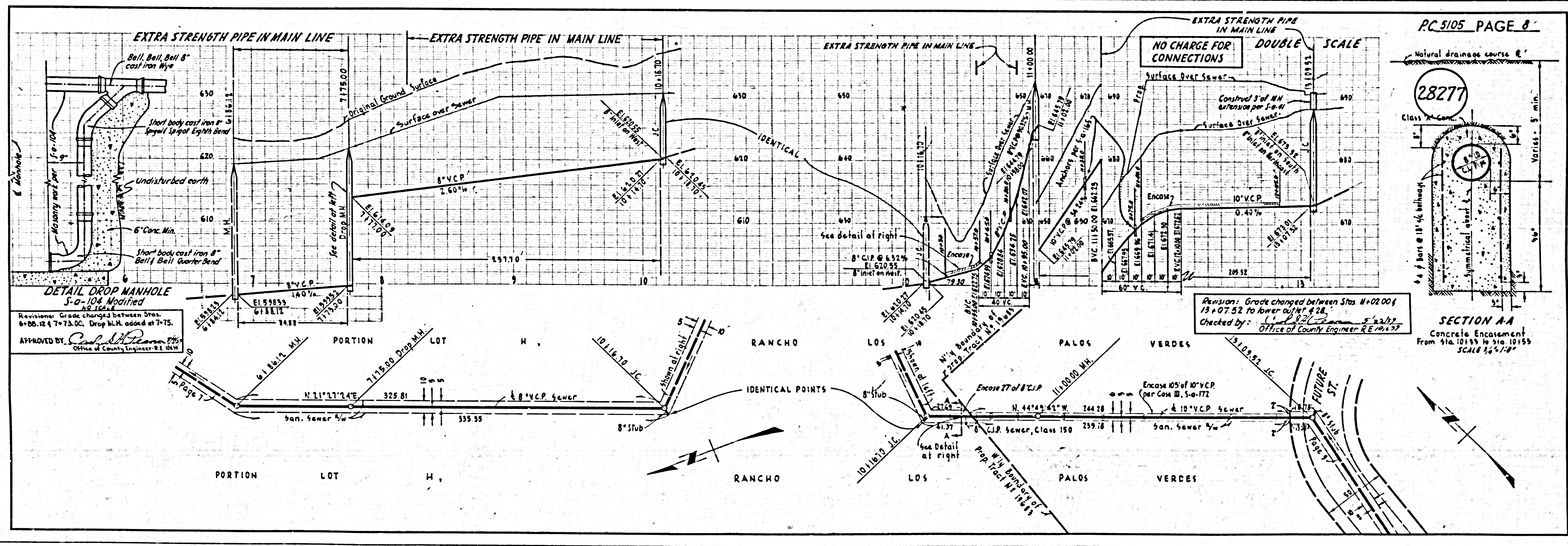


Revision: Grade lowered between Sta 5180 and Sta. 7175  
Checked by: Office of County Engineer R.E. VERDES

NO CHARGE FOR  
CONNECTIONS  
DOUBLE SCALE

28277

SECTION A-A  
Concrete Encasement  
From Sta. 10185 to Sta. 10155  
SCALE 3/4\"/>



Revision: Grade changed between Stas. 10200 / 13+07.52 to lower to 42\"/>



