

B.M.-S.G. 51 ELEV. 673.369
 1.97.14 Curb near center of Curb
 Return of S.E. Corner of Glendora
 Ave. and Covina Blvd., S.D. 1955

COLLECT CHARGES
 AS INDICATED
 72 2003 3-1-40

SAN DIMAS BLDG. DIST. NO. 10

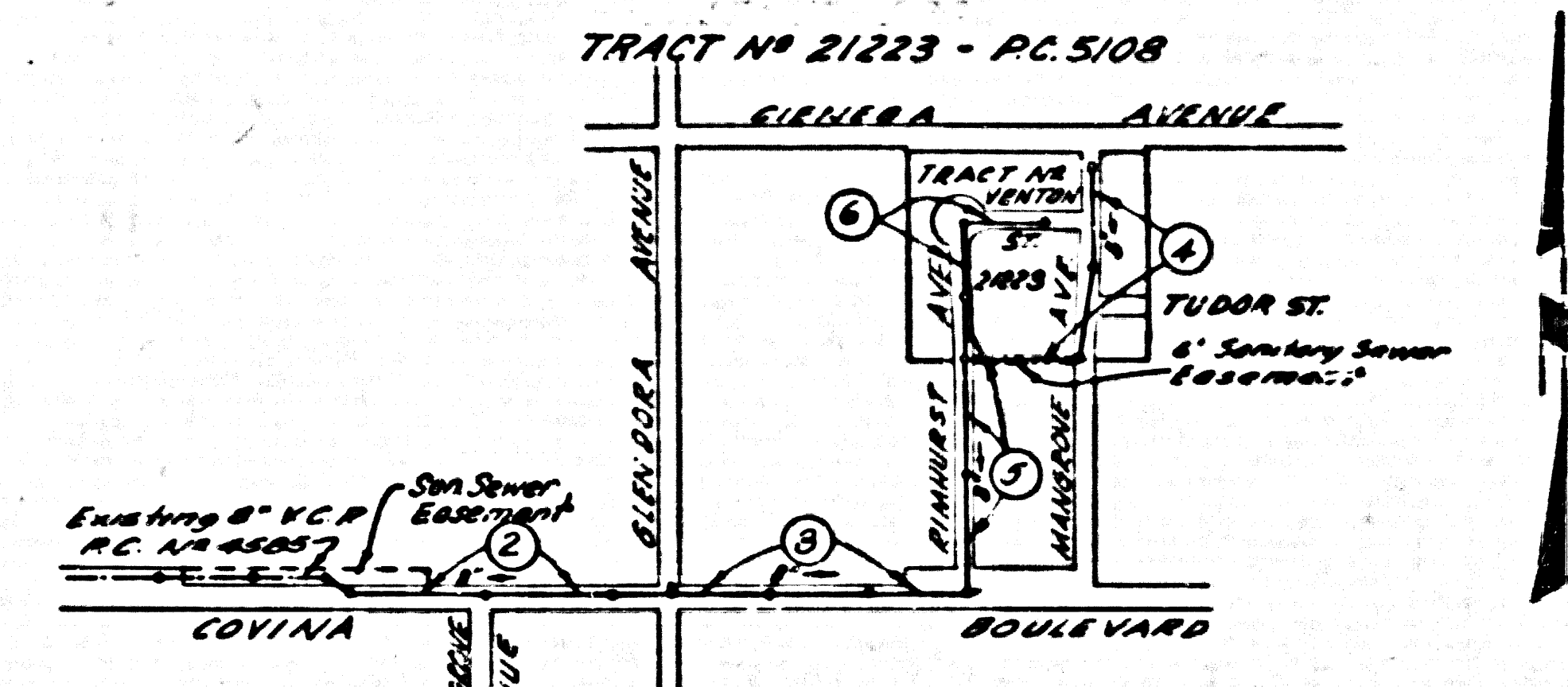
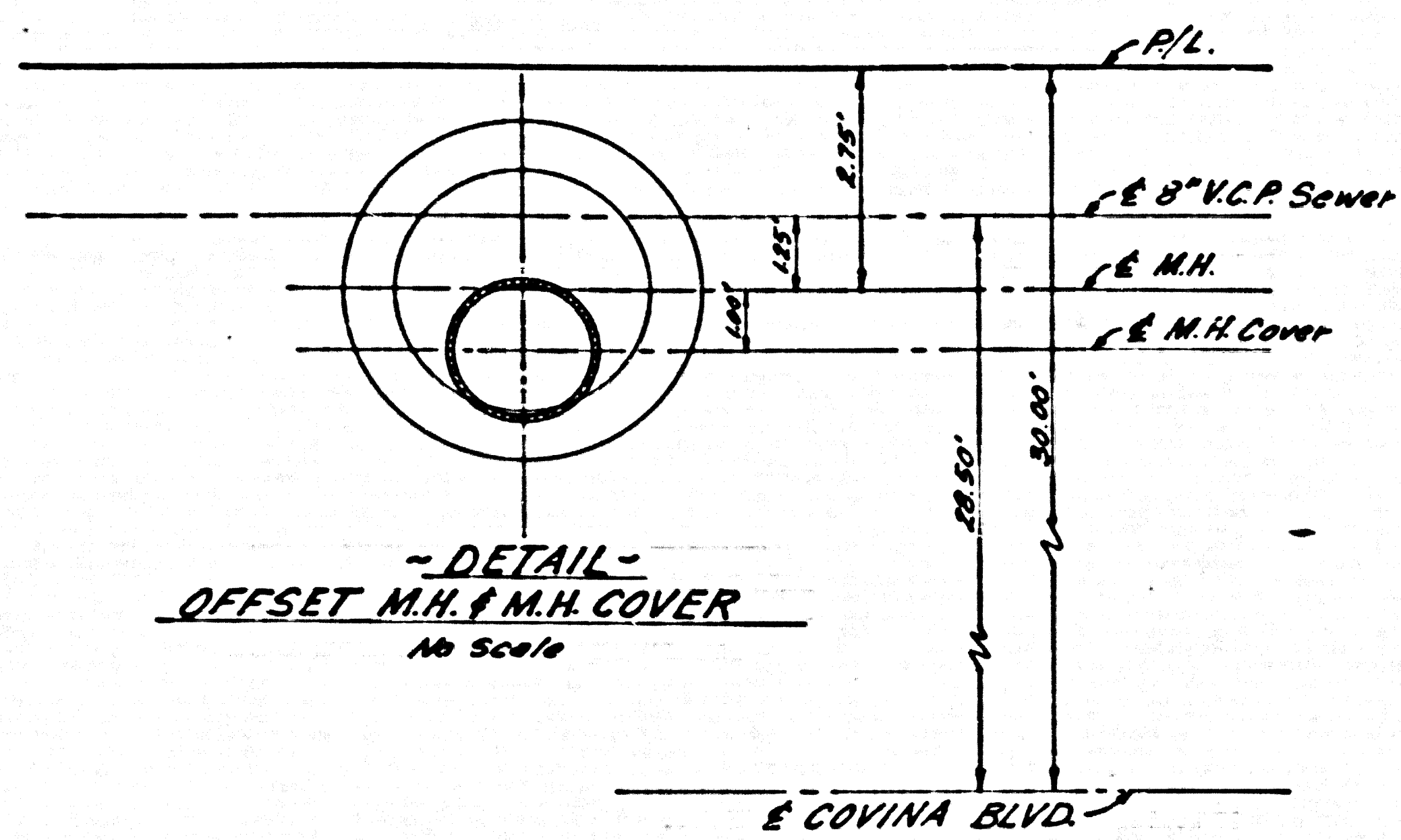
- NOTE:
- PROVIDE STAKES ON THE PROPERTY LINE OR PROP. LINES PRODUCED AT RIGHT ANGLES TO THE SEWER LINE AT THE CENTER LINE OF EACH MANHOLE.
 - NO REPRESENTATIVE OF THE COUNTY ENGINEER WILL SURVEY OR LAY OUT ANY PORTION OF THE WORK.
 - THE OWNER OR HIS AUTHORIZED REPRESENTATIVE SHALL FURNISH THE COUNTY ENGINEER WITH GRADE SHEETS AND STATIONING FOR ALL HOUSE LATERALS AND Y BRANCHES AND SHALL PROVIDE STAKES FOR THEM AT THESE PROPER LOCATIONS WITH STATIONING PLAINLY MARKED. ANY CHANGE IN LOCATION SHALL BE INDICATED IN WRITING BY THE OWNER OR HIS REPRESENTATIVE.
 - THE PRIVATE ENGINEER SHALL FURNISH THE HOUSE LATERAL BATH AT THE PROPERTY LINE BELOW THE TOP OF CURB ELEVATION FOR EACH HOUSE LATERAL ON THE GRADE SHEET.
 - NO ADJUSTMENTS SHALL BE MADE IN THESE PLANS WITHOUT THE APPROVAL OF THE COUNTY ENGINEER.
 - USE STANDARD MANHOLE FRAMES AND COVERS, S-117.
 - USE STANDARD STRENGTH PIPE, SCHEDULE 40 1875D.
 - USE CEMENT MORTAR OR "WEDGE LOCK" OR "SPREAD BEAM" FOR ALL V.C.P. JOINTS PER SPEC., SECS. 26 & 46.
 - RESURFACE ALL TRENCH WITHIN PAVED AREA TO MEET L.A. COUNTY ROAD DEPT. OR CALIF. STATE HIGHWAY REQUIREMENTS IN ACCORDANCE WITH PERMITS.
 - ENCASE FOUR FEET OF SIDES AT POINTS OF INTERFERENCE WITH POLES, CASE A, S-172.
 - HOUSE LATERALS TO BE CONSTRUCTED WITH JOINTS AT PROPERTY LINE, S-117, PER BELOW CURB GRADE.
 - ALL STRUCTURES SHALL BE SINCE SEWER STRUCTURES, S-104.
 - FOR ALLOWABLE LEAKAGE TEST USE FORMULA NO. 1, SPEC., SEC. 34.
 - MANHOLE TOPS IN UNIMPROVED RIGHTS-OF-WAY TO BE SIX INCHES ABOVE FINISHED GRADE.
 - THE CONTRACTOR SHALL NOTIFY THE CONSTRUCTION & STATION BOARD BY TELEPHONE, MANHOLE 9-00, BY 2:00 P.M. AT LEAST TWENTY-FOUR HOURS BEFORE STARTING ANY WORK UNDER THIS CONTRACT.
 - ALL CONSTRUCTION TO CONFORM TO STANDARD SPECIFICATIONS DATED JANUARY 1, 1941.
 - TREES MAY BE REMOVED BY THE CONTRACTOR, IF NECESSARY, BUT ONLY THOSE AS SPECIFIED IN L.A. COUNTY PARKS DEPT. PERMIT NO. 33132. REMOVAL TO BE IN ACCORDANCE WITH SAID PERMIT.
 - ALL PIPE JOINTS WITHIN 10' OF ANY TREE SHALL BE ENCASED WITH 4" CEMENT MORTAR PER SPEC., SEC. 47.

PROFILE ALIGNMENT AND GRADE OF P.C. 5108
 SANITARY SEWERS PAGE 1
 TO BE CONSTRUCTED IN J.N. 0350.58

TRACT NO. 21223
 E COVINA BLVD.

PRIVATE CONTRACT NO. 5108
 W.S. 48
 3 SHEETS, 6 PAGES
 SCALE: VERT. 1"=4' HORIZ. 1"=40'
 OCTOBER, 1959
 PREPARED IN THE OFFICES OF
 L. FREDERICK PACK & ASSOCIATES
 149 W. BADILLO ST., COVINA, CALIF.
 BY: *L.F. Pack*
 REG. C. E. NO. 10212
 FOR LEGEND SEE PLAN NO. S-A-64

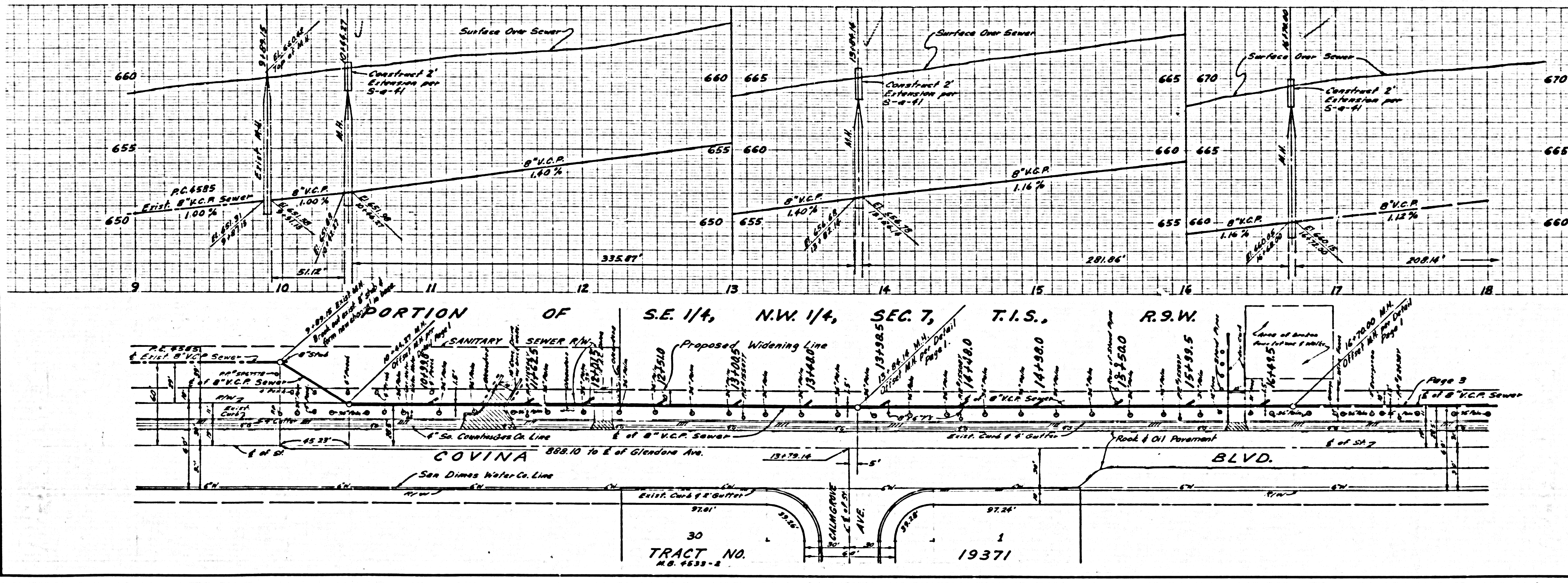
29,615



NOTE:
 GRADES TO WHICH THIS IMPROVEMENT IS TO BE CONSTRUCTED ARE SHOWN ON PLANS AND PROFILES. GRADE POINTS FOR TOP OF CURB, CENTER LINE OF STREETS, OR CENTER LINE OF ALLEYS ARE SHOWN BY CIRCLES ON PROFILES AT ALL POINTS BETWEEN DESIGNATED POINTS THE GRADE SHALL BE OBTAINED SO AS TO CONFORM TO A STRAIGHT LINE DRAWN BETWEEN SAID DESIGNATED POINTS.
 ELEVATIONS ARE IN FEET ABOVE U.S.C. & G.S. SEA LEVEL UNLESS OTHERWISE SPECIFIED.
 THIS DRAWING AND THE DATA HEREON ARE HEREBY MADE A PART OF THE SPECIFICATIONS.
 WORK SHALL BE CONSTRUCTED ACCORDING TO SPECIFICATIONS ON FILE IN THE OFFICE OF THE COUNTY ENGINEER AND SHALL BE PROSECUTED ONLY BY THE PRIVATEER OF THE COUNTY ENGINEER.
 BEFORE WORK CAN BE STARTED, THE CONTRACTOR MUST OBTAIN A PERMIT TO EXCAVATE IN COUNTY STREETS FROM THE L.A. COUNTY ROAD DEPT., DISTRICT OFFICE NO. 1, AND PAY A FEE TO THE COUNTY ENGINEER, ROOM 214 SAN ANTONIO BUILDING, 215 SO. BROADWAY, SUFFICIENT TO COVER THE COST OF CONSTRUCTION INSPECTION AND RECORD PLANS.
 APPROVAL OF THIS PLAN BY THE COUNTY OF LOS ANGELES DOES NOT CONSTITUTE A REPRESENTATION AS TO THE ACCURACY OF THE LOCATION OF OR THE EXISTENCE OR NON-EXISTENCE OF ANY UNDERGROUND UTILITY PIPE, OR STRUCTURE WITHIN THE LIMITS OF THE PROJECT. THIS NOTE APPLIES TO ALL PAGES.
 IF WORK IS TO BE DONE IN A STATE HIGHWAY, A PERMIT MUST BE OBTAINED FROM THE STATE OF CALIFORNIA, DIVISION OF HIGHWAYS, 120 SOUTH SPRING STREET.
 COUNTY OF LOS ANGELES, CALIFORNIA
 APPROVED, JOHN A. LAMBE, COUNTY ENGINEER
 APPROVED, *L.F. Pack*, CHIEF ENGINEER
 REG. SAN. ENG. NO. 22
 BY: *L.F. Pack* BY: *L.F. Pack*
 REG. SANITATION ENGINEER OFFICE ENGINEER
 CHECKED BY: *L.F. Pack* 3-4-60
 OFFICE OF COUNTY ENGINEER, REG. C. E. NO. 2436
 SUBMITTED: *W.C. Reindenter*
 SAN DIMAS REGIONAL ENGINEER

P.C. 5108 PAGE 2
 REIMBURSEMENT CHARGE
 CALL SANITATION DIV'N.

29,616



30 TRACT NO. 19371

