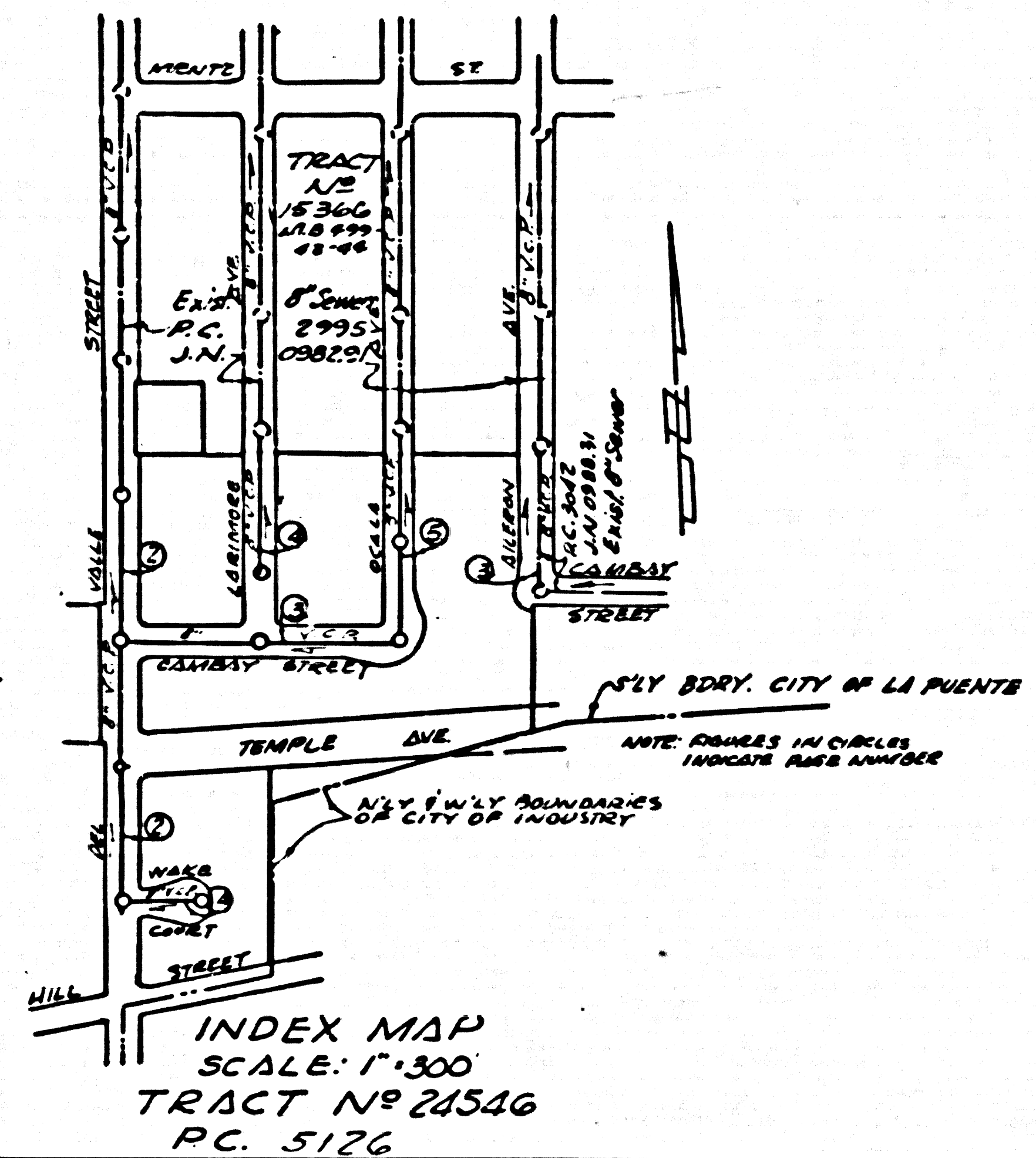


B.M. 58107, Lgt. in N. Curb Elliot Ave
 15' W. of Curb return at N.W. corner
 Cadwell St. f. Elliot Ave. E. 321.228

Elev. of this B.M. per 1955 C.S. precise
 or 1' CLEV. 324.024
 Subtract 0.20' from all elevations shown
 on these plans to be on C.S. precise 1955

**COLLECT CHARGES
 AS INDICATED**
 7/27/55



LA FUENTE BLDG. DIST. NO. 202

- NOTES:
1. PROVIDE STAKES ON THE PROPERTY LINE OR PROPERTY LINES PRODUCED AT RIGHT ANGLES TO THE SEWER LINE AT THE CENTER LINE OF EACH MANHOLE.
 2. NO REPRESENTATIVE OF THE CITY ENGINEER WILL SURVEY OR LAY OUT ANY PORTION OF THE WORK.
 3. THE OWNER OR HIS AUTHORIZED REPRESENTATIVE SHALL FURNISH THE CITY ENGINEER WITH QUOTE SHEETS AND STATIONING FOR ALL HOUSE LATERALS AND T BRANCHES AND SHALL PROVIDE STAKES FOR THEM AT THEIR PROPER LOCATIONS WITH STATIONING PLAINLY MARKED. ANY CHANGE IN LOCATION SHALL BE REQUESTED IN WRITING BY THE OWNER OR HIS REPRESENTATIVE.
 4. THE PRIVATE ENGINEER SHALL FURNISH THE HOUSE LATERAL DEPTH AT THE PROPERTY LINE BELOW THE TOP OF CURB ELEVATION FOR EACH HOUSE LATERAL ON THE QUOTE SHEET.
 5. NO REVISIONS SHALL BE MADE IN THESE PLANS WITHOUT THE APPROVAL OF THE CITY ENGINEER.
 6. USE STANDARD MANHOLE FRAMES AND COVERS, S-117.
 7. USE STANDARD STRENGTH PIPE.
 8. USE CEMENT MORTAR OR "WEDGE LOCK" OR "SPEED-SEAL" FOR ALL V.C.P. JOINTS PER SPEC'S, SECS. 36 & 40.
 9. RESURFACE ALL TRUCK WITHIN PAVED AREA TO MEET L.A. COUNTY ROAD DEPT. OR CALIF. STATE HIGHWAY REQUIREMENTS IN ACCORDANCE WITH PERMITS.
 10. ENCASE FOUR FEET OF SEWER AT POINTS OF INTERFERENCE WITH POLES, CABLE, ETC., S-117.
 11. HOUSE LATERALS TO BE CONSTRUCTED WITH INVERTS AT PROPERTY LINE 6 FEET BELOW CURB GRADE.
 12. ALL STRUCTURES SHALL BE BRICK SEWER STRUCTURES, S-116.
 13. FOR ALLOWABLE LEAKAGE TEST USE FORMULA NO. 1, SPEC'S, SEC. 34.
 14. MANHOLE TOPS IN UNIMPROVED RIGHTS-OF-WAY TO BE SIX INCHES ABOVE FINISHED GRADE.
 15. THE CONTRACTOR SHALL NOTIFY THE CONSTRUCTION & STORM DRAIN DIVISION BY TELEPHONE, MADISON 9-674, EXT. 345, AT LEAST TWENTY-FOUR HOURS BEFORE STARTING ANY WORK UNDER THIS CONTRACT.

17. COMPACTION NOTES:
- (a) NO CONSTRUCTION WILL BE PERMITTED IN FILLED AREAS UNLESS ACCEPTABLE CERTIFICATION IS SUBMITTED TO THE CONSTRUCTION DIVISION THAT COMPACTION IS 80% OR GREATER.
 - (b) IF COMPACTION IS 80% OR GREATER BUT LESS THAN 90%, CRADLING IS REQUIRED PER S-116.
 - (c) IF COMPACTION IS 50% OR GREATER, CRADLING IS NOT REQUIRED. HOWEVER, JOINT-COMPOUND, "WEDGE-LOCK" OR "SPEED-SEAL" MUST BE SUBSTITUTED FOR CEMENT MORTAR FOR ALL JOINTS IN FILLED AREAS.

CITY OF LA PUENTE
 APPROVED: *[Signature]*
 CITY MANAGER

PROFILE ALIGNMENT AND GRADE OF **P.C. 5126**
SANITARY SEWERS PAGE 1
 TO BE CONSTRUCTED IN

TRACT NO 24546 (28,118)

PRIVATE CONTRACT NO. 5126

W.S. 38

3 SHEETS, 5 PAGES

SCALE: VERT. 1"=4' HORIZ. 1"=40' FEBRUARY, 1959

PREPARED IN THE OFFICES OF

RALPH E. BOLLES
 294 S. SAN VICENTE BLVD
 L.A., CALIF. PHONE OL 79600

By *[Signature]* REG. C. E. NO. 2372

FOR LEGEND SEE PLAN NO. S-A-64

NOTE: GRADES TO WHICH THIS IMPROVEMENT IS TO BE CONSTRUCTED ARE SHOWN ON PLANS AND PROPER GRADE POINTS FOR TOP OF CURB, CENTER LINE OF STREET, OR CENTER LINE OF ALLEYS ARE SHOWN BY CIRCLES ON PROFILE. AT ALL POINTS BETWEEN DESIGNATED POINTS THE GRADE SHALL BE ESTABLISHED SO AS TO COMPOSE TO A STRAIGHT LINE DRAWN BETWEEN SAID DESIGNATED POINTS.

REVISIONS ARE IN FEET ABOVE U.S.C. & G.S. SEA LEVEL DATUM OF 1929.

THIS DRAWING AND THE DATA HEREON ARE HEREBY MADE A PART OF THE SPECIFICATIONS. WORK SHALL BE CONSTRUCTED ACCORDING TO SPECIFICATIONS ON FILE IN THE OFFICE OF THE CITY ENGINEER AND SHALL BE PROSECUTED ONLY IN THE PRESENCE OF THE CITY ENGINEER.

BEFORE WORK CAN BE STARTED THE CONTRACTOR MUST OBTAIN A PERMIT TO EXCAVATE IN CITY STREETS FROM THE L.A. COUNTY ROAD DEPT., DISTRICT OFFICE NO. 1, AND MAKE A DEPOSIT WITH THE CITY ENGINEER ROOM 324 PAM AMERICAN BUILDING, 120 W. BROADWAY, SUFFICIENT TO COVER THE COST OF CONNECTION INSPECTION AND RECORD PLANS.

APPROVAL OF THIS PLAN BY THE CITY OF LA PUENTE DOES NOT CONSTITUTE A REPRESENTATION AS TO THE ACCURACY OF THE LOCATION OR OF THE EXISTENCE OF NON-EXISTENCE OF ANY UNDERGROUND UTILITY PIPE, GAS STRUCTURE WITHIN THE LIMITS OF THE PROJECT. THIS NOTE APPLIES TO ALL PAGES.

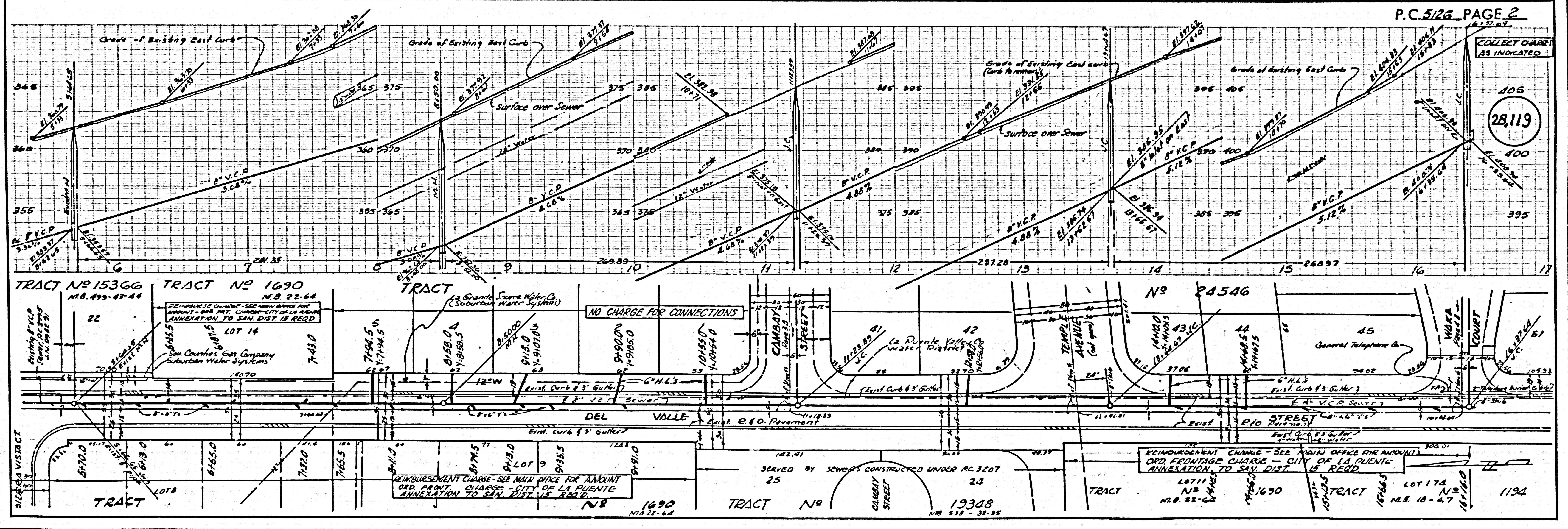
IF WORK IS TO BE DONE IN A STATE HIGHWAY, A PERMIT MUST BE OBTAINED FROM THE STATE OF CALIFORNIA, DIVISION OF HIGHWAYS, 120 SOUTH BRIDGE STREET.

CITY OF LA PUENTE, CALIFORNIA

APPROVED, JOHN A. LAMBE, CITY ENGINEER APPROVED, C.E. COMPTON, CHIEF ENGINEER

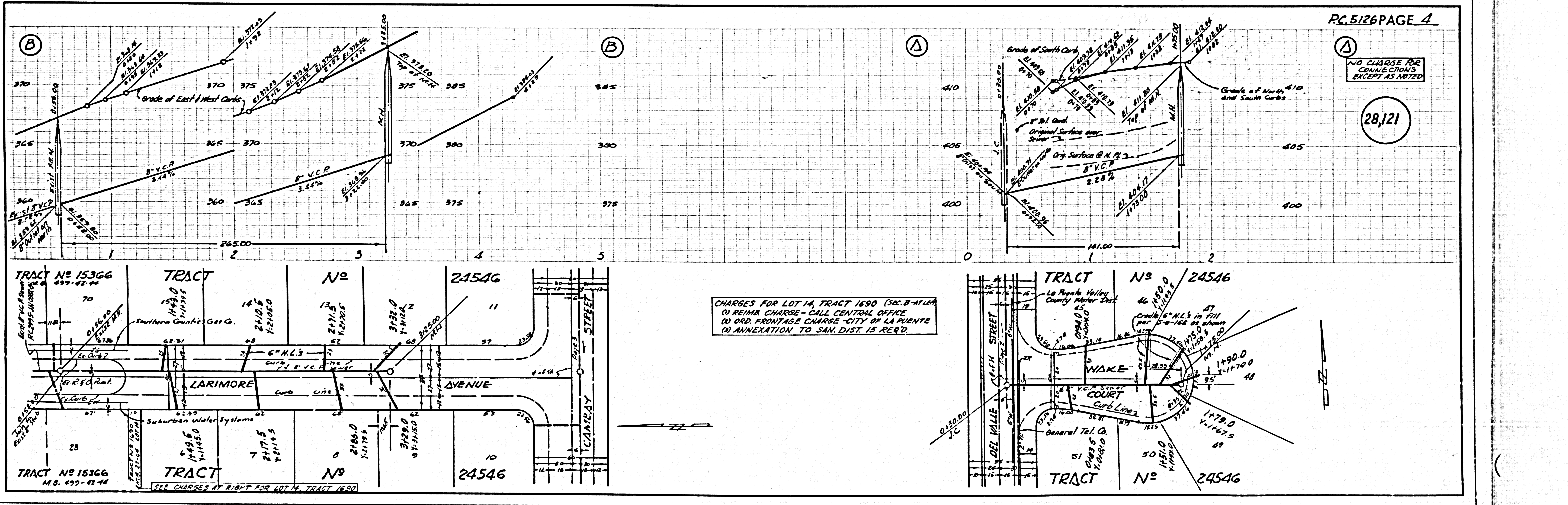
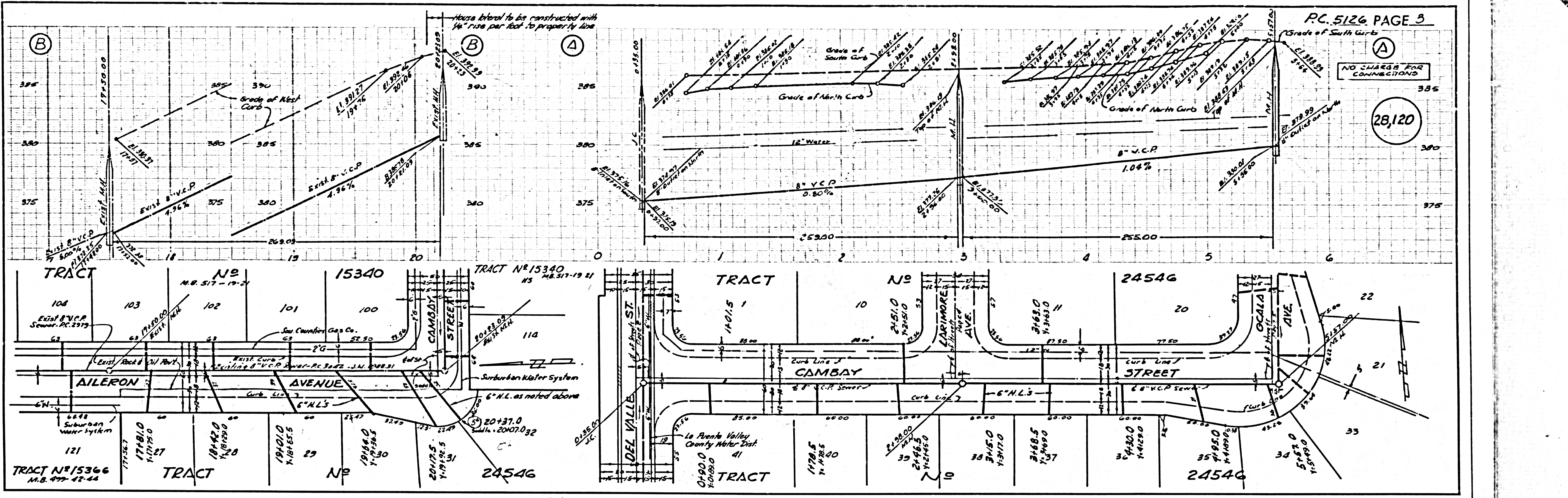
By *[Signature]* By *[Signature]*
 SANITATION ENGINEER OFFICE ENGINEER

CHECKED BY *[Signature]* 6-11-59
 OFFICE OF CITY ENGINEER, REG. C. E. NO. 2486



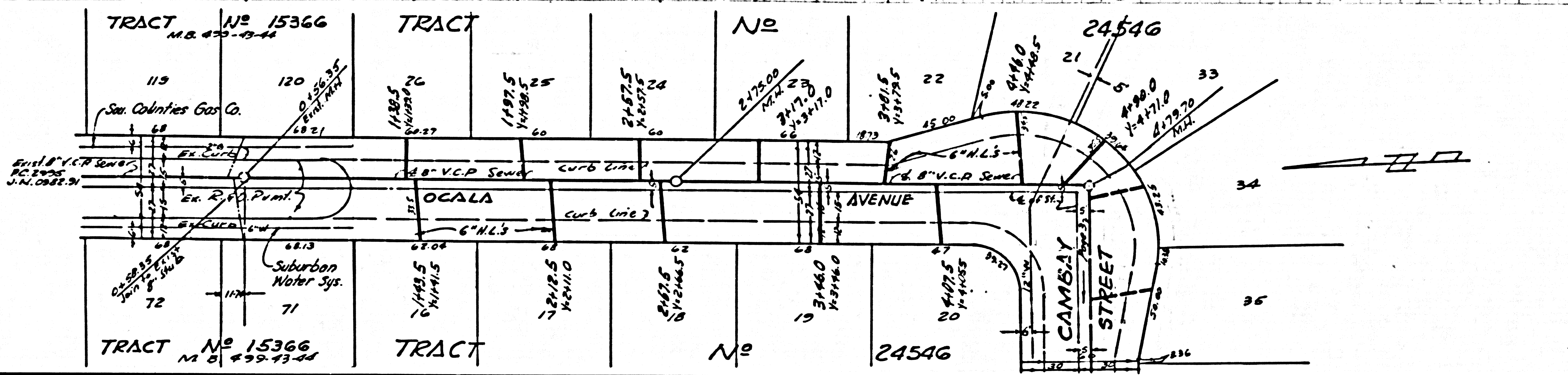
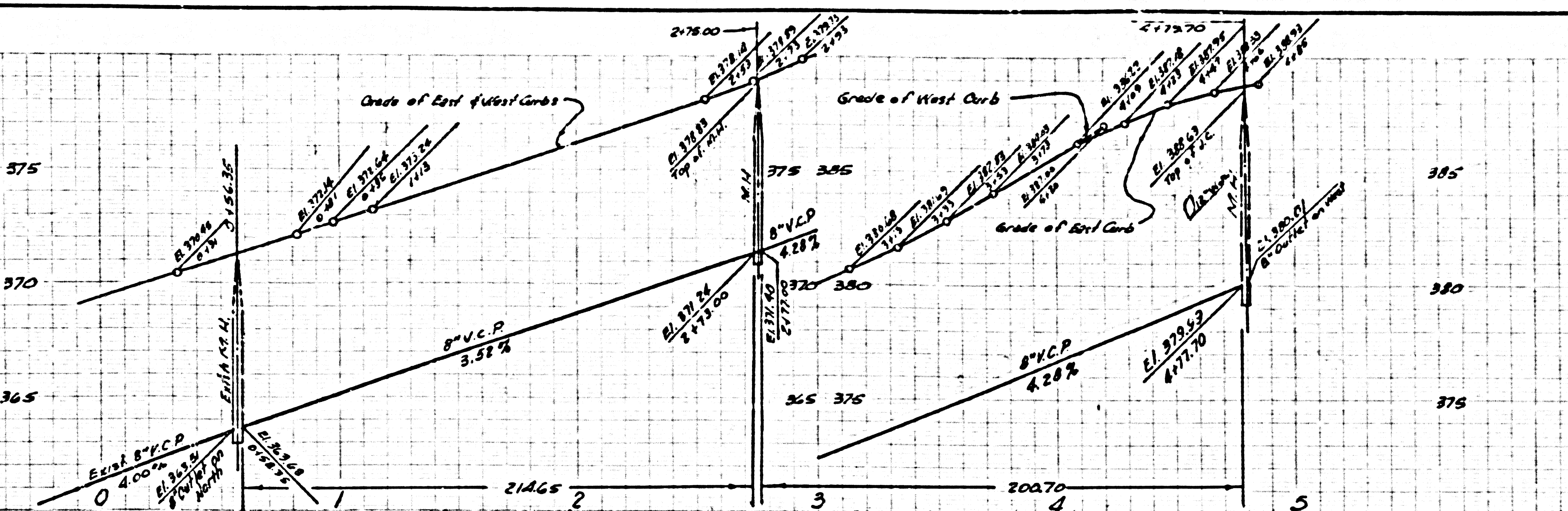
P.C. 5126 PAGE 2
 COLLECT CHARGES AS INDICATED
 (28,119)

TRACT NO 15366 N.B. 492-47-44
 TRACT NO 1690 N.B. 22-64
 TRACT (La Grande Source Water Co. (Suburban Water System))
 NO CHARGE FOR CONNECTIONS
 REIMBURSEMENT CHARGE - SEE MAIN OFFICE FOR AMOUNT
 ORD. FRONT. CHARGE - CITY OF LA PUENTE
 ANNEXATION TO SAN. DIST. IS REQ'D.
 TRACT NO 19348 N.B. 510-32-35
 TRACT NO 1690 N.B. 22-64
 TRACT NO 1194 N.B. 18-67



NO CHARGE FOR CONNECTIONS

28,122



U. S. G. & M. CO. CAL. BLUE PRINT SHEET NO. 2