

ALTADENA BLDG. DIST. NO. 3

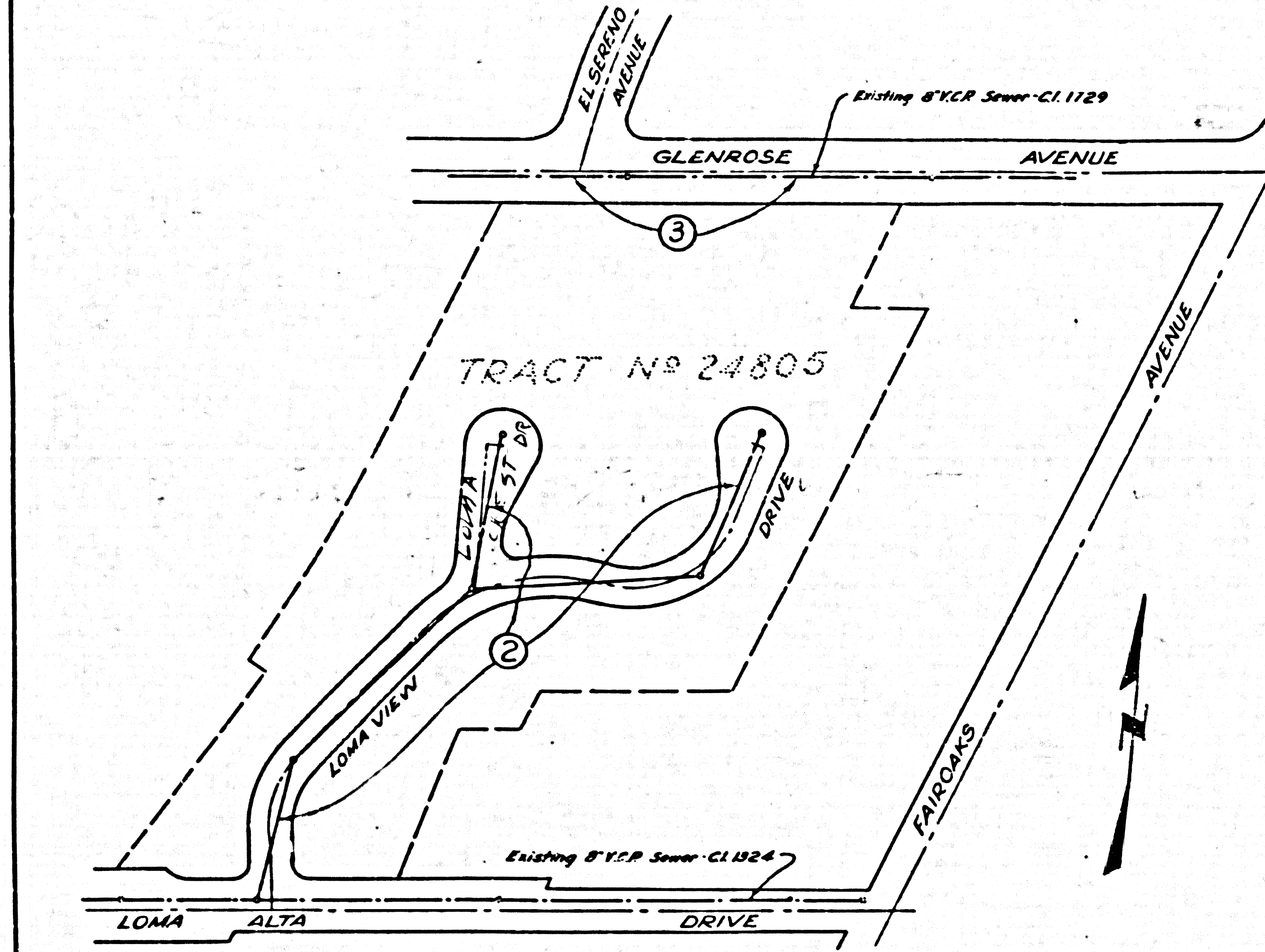
PROFILE ALIGNMENT AND GRADE OF P.C. 5128  
 SANITARY SEWERS PAGE 1  
 TO BE CONSTRUCTED IN J.N. 035673  
 TRACT No 24805

PRIVATE CONTRACT NO. 5128  
 W.S. 88  
 2 SHEETS, 3 PAGES  
 DOUBLE SCALE: VERT. 1"=4' HORIZ. 1"=40' APRIL, 1959 27,822  
 PREPARED IN THE OFFICES OF  
 SUBDIVISION ENGINEERING CO.  
 BY *W. L. Bannan*  
 REG. C.E. NO. 5818  
 FOR LEGEND SEE PLAN NO. S-A-44

- NOTES:
1. PROVIDE STAKES ON THE PROPERTY LINE OR PROPERTY LINES FROM CORNER AT RIGHT ANGLES TO THE CENTER LINE OF EACH MANHOLE.
  2. NO REPRESENTATIVE OF THE COUNTY ENGINEER SHALL SURVEY OR LAY OUT ANY PORTION OF THE WORK.
  3. THE OWNER OR HIS AUTHORIZED REPRESENTATIVE SHALL FURNISH THE COUNTY ENGINEER WITH GRADE SHEETS AND STATIONING FOR ALL HOUSE LATERALS AND Y BRANCHES AND SHALL PROVIDE STAKES FOR THESE AT THEIR PROPER LOCATIONS WITH STATIONING PLAINLY SHOWN. ANY CHANGE IN LOCATION SHALL BE REQUESTED IN WRITING BY THE OWNER OR HIS REPRESENTATIVE.
  4. THE PRIVATE ENGINEER SHALL FURNISH THE HOUSE LATERAL DEPTH AT THE PROPERTY LINE BELOW THE TOP OF CURB SULATION FOR EACH HOUSE LATERAL ON THE GRADE SHEET.
  5. NO REVISIONS SHALL BE MADE IN THESE PLANS WITHOUT THE APPROVAL OF THE COUNTY ENGINEER.
  6. USE STANDARD MANHOLE FRAMES AND COVERS, S-117.
  7. USE STANDARD STRENGTH PIPE EXCEPT AS NOTED.
  8. USE CEMENT MORTAR OR "WEDGE-LOCK" OR "SPED-BAL" FOR ALL V.C.P. JOINTS PER SPECS. SECS. 36 & 41.
  9. RESURFACE ALL TRENCH WITHIN PAVED AREA TO MEET L.A. COUNTY ROAD DEPT. OR CALIF. STATE HIGHWAY REQUIREMENTS IN ACCORDANCE WITH PERMITS.
  10. SHOWS FOUR FEET OF COVER AT POINTS OF INTERFERENCE WITH POLES, CASE NO. S-172.
  11. HOUSE LATERALS TO BE CONSTRUCTED WITH INVERTS AT PROPERTY LINE. PRESET BELOW CURB GRADE EXCEPT AS NOTED.
  12. ALL STRUCTURES SHALL BE BUILT WITHIN SPECIFICATIONS S-194.
  13. FOR ALLOWABLE LEAKAGE TEST USE FORMULA NO. 1 - SPECS. SEC. 36.
  14. MANHOLE TOPS IN UNIMPROVED RIGHTS OF WAY TO BE 12 INCHES ABOVE FINISHED GRADE.
  15. THE CONTRACTOR SHALL NOTIFY THE CONSTRUCTION & STORM DRAIN DIVISION BY TELEPHONE, HANDBOOK S-678, BY MAIL AT LEAST TWENTY-FOUR HOURS BEFORE STARTING ANY WORK UNDER THIS CONTRACT.
  16. FIGURES IN CIRCLES AT ENDS OF HOUSE LATERALS INDICATE DEPTH. SHOW CURB GRADE.
  17. FIGURES IN CIRCLE AT ENDS OF HOUSE LATERALS INDICATE HOUSE LATERALS SHALL BE CONSTRUCTED WITH 4" RISE PER FOOT TO PROPERTY LINE.

NO CHARGE FOR CONNECTIONS  
*E. M. Cadwell 3-13-59*

B. M. AE 422 F.B. 150469 Elev. 1516.632  
 S. side Loma Alta Dr. 81' Spt. in curb  
 650'± W of Fair Oaks in front of Ho. No. 104

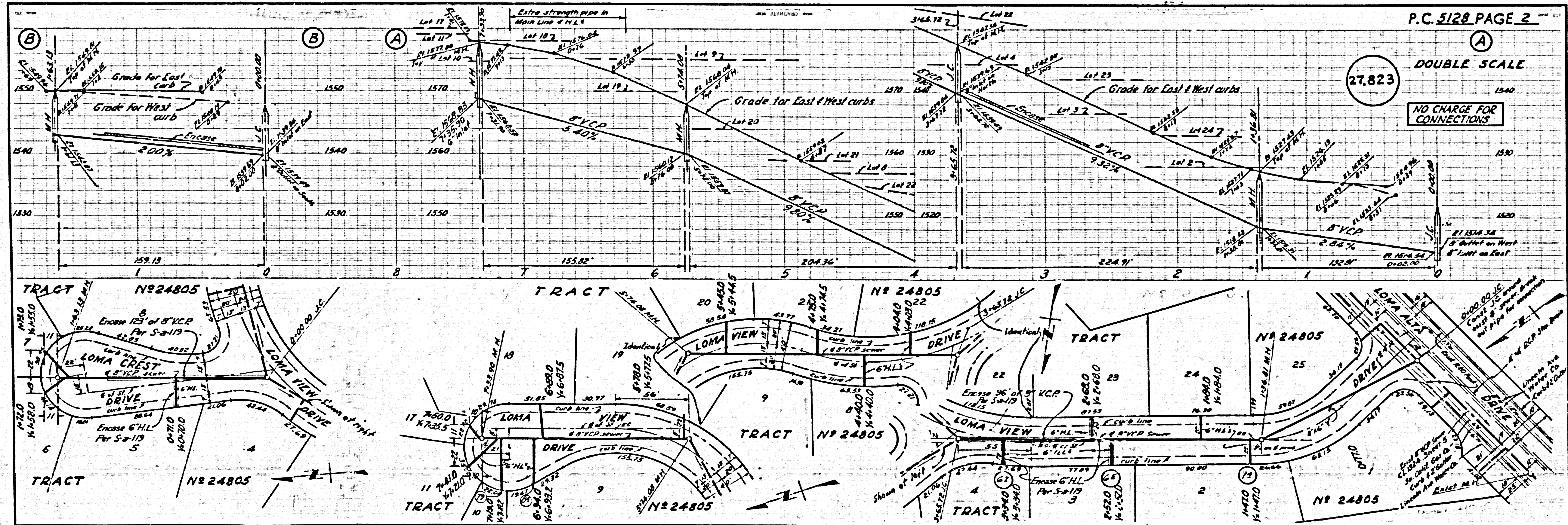


INDEX MAP SCALE 1"=100'

NOTES:  
 GRADES TO WHICH THIS IMPROVEMENT IS TO BE CONSTRUCTED ARE SHOWN ON PLANS AND PROFILE. GRADE POINTS FOR TOP OF CURB, CENTER LINE OF STREETS, OR CENTER LINE OF ALLEYS ARE SHOWN BY CIRCLES ON PROFILES. AT ALL POINTS BETWEEN DESIGNATED POINTS THE GRADE SHALL BE ESTABLISHED SO AS TO CONFORM TO A STRAIGHT LINE BETWEEN SAID DESIGNATED POINTS.  
 ELEVATIONS ARE IN FEET ABOVE U.S.C. & G.S. SEA LEVEL DATUM ON 1929.  
 THE DRAWING AND THE DATA HEREON ARE HEREBY MADE A PART OF THE SPECIFICATIONS.  
 WORK SHALL BE CONSTRUCTED ACCORDING TO SPECIFICATIONS ON FILE IN THE OFFICE OF THE COUNTY ENGINEER AND SHALL BE PROSECUTED ONLY IN THE PRESENCE OF THE COUNTY ENGINEER.  
 BEFORE WORK CAN BE STARTED, THE CONTRACTOR MUST OBTAIN A PERMIT TO EXCAVATE IN COUNTY STREETS FROM THE L.A. COUNTY ROAD DEPT., DISTRICT OFFICE NO. 100, AND SHALL A REPORT WITH THE COUNTY ENGINEER, ROOM 304 FAYAN ARCADE BUILDING, 338 SO BROADWAY SUFFICIENT TO COVER THE COST OF CONSTRUCTION INSPECTION AND RECORD PLANS.  
 APPROVAL OF THIS PLAN BY THE COUNTY OF LOS ANGELES DOES NOT CONSTITUTE A REPRESENTATION AS TO THE ACCURACY OF THE LOCATION OF OR THE EXISTENCE OR NON-EXISTENCE OF ANY UNDERGROUND UTILITY PIPE, OR STRUCTURE WITHIN THE LIMITS OF THIS PROJECT THIS NOTE APPLIES TO ALL PAGES.  
 IF WORK IS TO BE DONE IN A STATE HIGHWAY, A PERMIT MUST BE OBTAINED FROM THE STATE OF CALIFORNIA, DIVISION OF HIGHWAYS, 128 SOUTH SPRING STREET.

COUNTY OF LOS ANGELES, CALIFORNIA  
 APPROVED, JOHN A. LAMBE, COUNTY ENGINEER  
 APPROVED, C. E. COMPTON, CHIEF ENGINEER  
 BY *W. L. Bannan* BY *W. L. Bannan*  
 CHECKED BY *W. L. Bannan*  
 OFFICE OF COUNTY ENGINEER, 300 S. E. ST. NO. 346

SUBMITTED *N. F. Brauer*  
 SAN GABRIEL VALLEY REGIONAL ENGINEER



P.C. 5128 PAGE 2

27,823

NO CHARGE FOR CONNECTIONS



DOUBLE SCALE

NO CHARGE FOR CONNECTIONS

27,824

