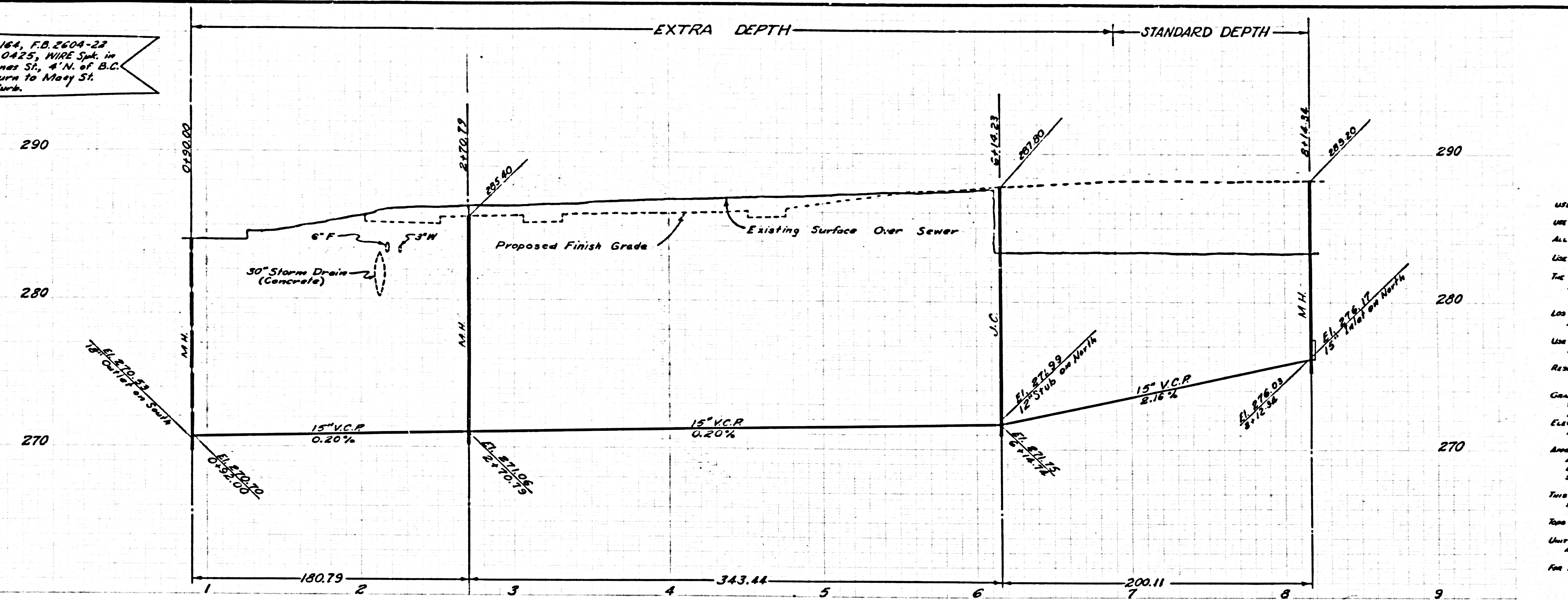


B.M.-E1.281164, F.B. 2604-22
 B.M.-N°12-0425, WIRE Spk. in
 W. Curb Vignes St, 4' N. of B.C.
 of Ch. Return to Maoy St.
 S. End of Curb.



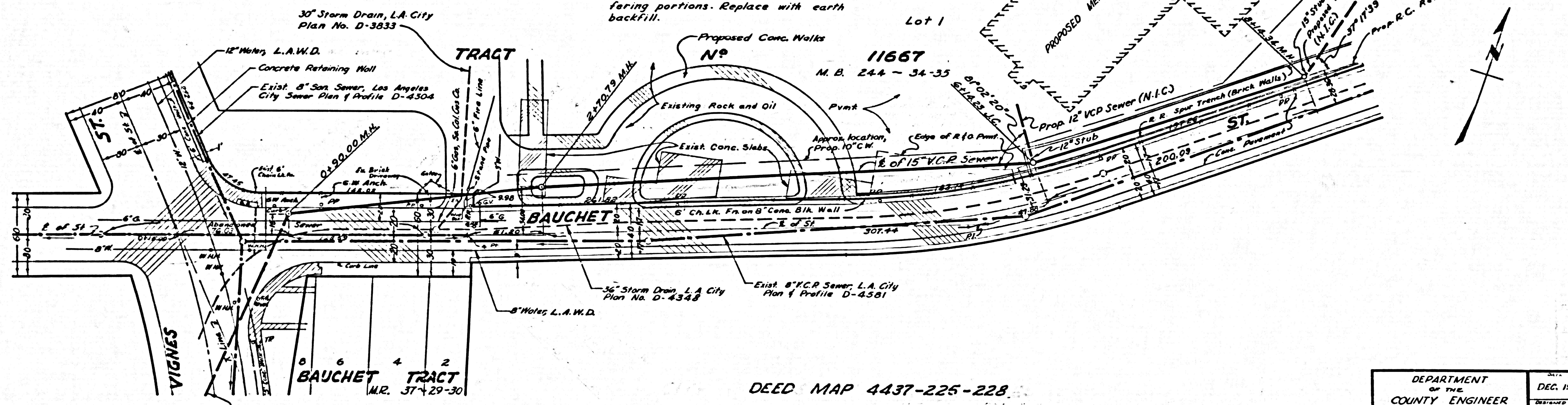
GENERAL NOTES

- USE EXTRA STRENGTH PIPE.
- USE MECHANICAL COMPRESSION JOINTS FOR ALL VITRIFIED CLAY PIPE PER SEC. 90 OF SPECIFICATIONS.
- ALL STRUCTURES SHALL BE BRICK UNLESS OTHERWISE SPECIFIED PER PLAN NO. 3-D-104.
- USE STANDARD MANHOLE FRAMES AND COVERS AS PER PLAN NO. 3-D-117.
- THE CONTRACTOR SHALL NOTIFY THE CONSTRUCTION DIVISION BY TELEPHONE, MAIL OR 9-4747, EXT. 81551 AT LEAST 24 HOURS BEFORE STARTING WORK UNDER THIS CONTRACT.
- LOS ANGELES COUNTY STANDARD SEWER SPECIFICATIONS DATED OCTOBER 25, 1961 APPLY IN THE CONSTRUCTION OF THIS PROJECT.
- USE FORMULA NO. 1, SEC. 94 OF SPECIFICATIONS TO COMPUTE ALLOWABLE LEAKAGE.
- RESURFACE TRENCH WITHIN BAUCHET ST IN ACCORDANCE WITH L.A. CITY STANDARD SPECIFICATIONS NO. 102, AS AMENDED.
- GRADES TO WHICH THIS SEWER IS TO BE CONSTRUCTED ARE SHOWN ON THIS PLAN & PROFILE. IF ALL POINTS BETWEEN DESIGNATED POINTS ARE ESTABLISHED AS TO CONFORM TO A STRAIGHT LINE BETWEEN THE DESIGNATED POINTS ELEVATIONS ARE IN FEET ABOVE U.S.C. & G.S. SEA LEVEL DATUM AS OF 1929.
- APPROVAL OF THIS PLAN BY THE COUNTY OF LOS ANGELES DOES NOT CONSTITUTE A REPRESENTATION AS TO THE ACCURACY OF THE LOCATION OR OF THE EXISTENCE OR NON-EXISTENCE OF ANY AND ALL OBSTRUCTIONS WHICH MAY BE STRUCTURE WITHIN THE LIMITS OF THIS PROJECT.
- THIS DRAWING AND THE DATA HEREON ARE HEREBY MADE A PART OF THE SPECIFICATIONS.
- TOP OF SEWER STRUCTURES SHALL BE ADJUSTED TO PROPOSED FINISH GRADE.
- UNIT PRICES FOR ADDITIONAL WORK WHICH MAY BE REQUIRED BY THIS CONTRACTOR SHALL BE SUBMITTED IN ADVANCE AND BE SUBMITTED IN THE PROPOSAL.
- FOR LEGEND SEE PLAN 3-D-64.

32844

SCALES:
 HORIZ - 1"=40'
 VER - 1"=4'

Contractor to inspect site & verify the existence of concrete slabs & rock & oil pavement. Remove interfering portions. Replace with earth backfill.



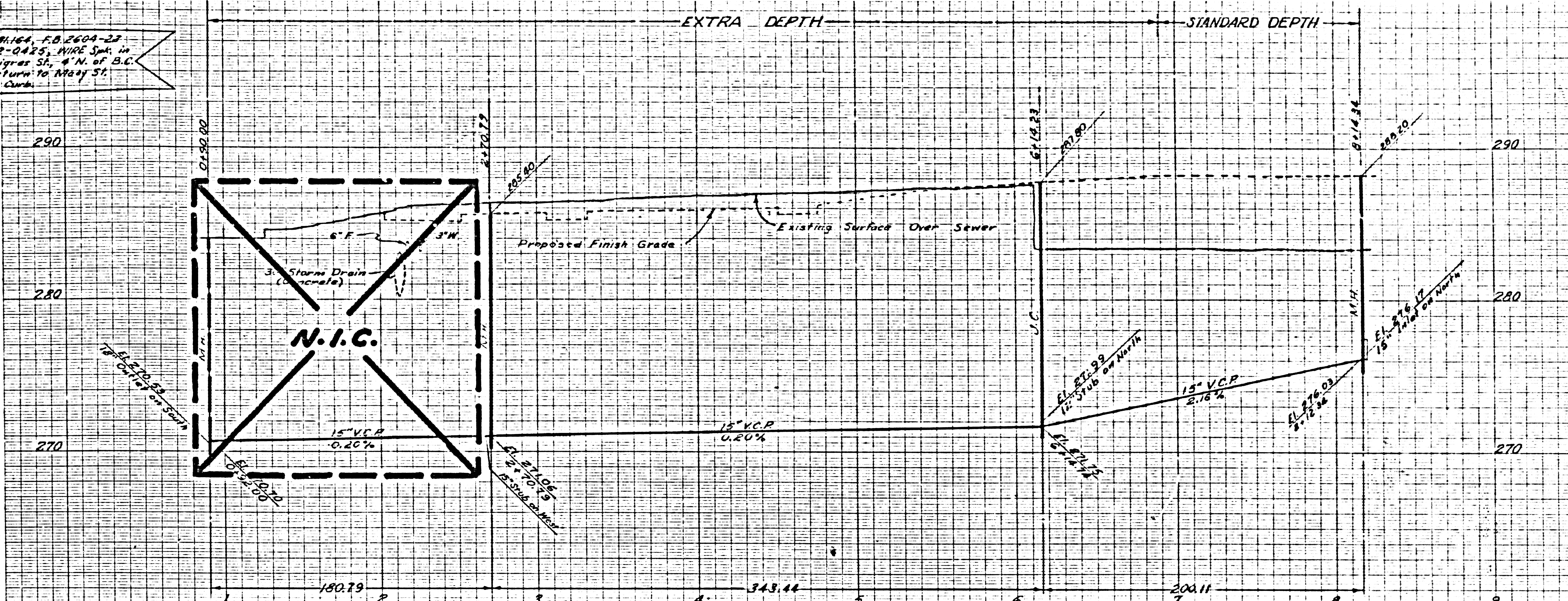
SHEET 2 L.A. City Plan N° D-17207

DEED MAP 4437-225-228

APPROVED: *[Signature]* DATE: 3-19-64
 FOR SHERIFF, L.A. COUNTY

DEPARTMENT OF THE COUNTY ENGINEER SANITATION DIVISION COUNTY OF LOS ANGELES	DEC. 1961	SANITARY SEWER	PLAN NO. 8536
	DESIGNED BY: SOMMER		PROJECT NO. 8536.02
	CHECKED BY: [Signature]	MEN'S CENTRAL JAIL FACILITY	SHEET NO. SAN-1
	APPROVED BY: [Signature]		# 3 SHEET
	SCALE: AS SHOWN	LOS ANGELES COUNTY, CALIFORNIA	

B.M. - E.I. 281164, F.B. 2604-23
 B.M. - N512-0425, WIRE Spk. in
 W. Curb Vignes St., 4' N. of B.C.
 of Cb. Return to May St.
 S. End of Curb



GENERAL NOTES

USE EXTRA STRENGTH PIPE.

USE WEDGELOCK OR SPEEDSEAL JOINTS FOR ALL VITRIFIED CLAY PIPE PER SEC 36 OF SPECIFICATIONS.

ALL STRUCTURES SHALL BE BRICK SEWER STRUCTURES PER PLAN NO S-a-104, AS REVISED SEPT. 1961.

USE STANDARD MANHOLE FRAMES AND COVERS AS PER PLAN NO S-a-117.

THE CONTRACTOR SHALL NOTIFY THE CONSTRUCTION DIVISION BY TELEPHONE MADISON 9-4747, EXT. 81551 AT LEAST 24 HOURS BEFORE STARTING ANY WORK UNDER THIS CONTRACT.

LOS ANGELES COUNTY STANDARD SEWER SPECIFICATIONS DATED OCTOBER 25, 1961 APPLY IN THE CONSTRUCTION OF THIS PROJECT.

USE FORMULA NO. 1, SEC. 54 OF SPECIFICATIONS TO COMPUTE ALLOWABLE LEAKAGE.

COORDINATES SHOWN ARE CONSTRUCTION COORDINATES.

GRADES TO WHICH THIS SEWER IS TO BE CONSTRUCTED ARE SHOWN ON THIS PLAN. IF ANY POINTS BETWEEN ADJACENT POINTS SHALL BE ESTABLISHED SO AS TO CONFORM TO A STRAIGHT LINE BETWEEN ADJACENT POINTS. ELEVATIONS ARE IN FEET ABOVE U.S.C. & G.S. SEA LEVEL DATUM '88 OF 1929.

APPROVAL OF THIS PLAN BY THE COUNTY OF LOS ANGELES DOES NOT CONSTITUTE A REPRESENTATION AS TO THE ACCURACY OF THE LOCATION OF OR THE EXISTENCE OR NON-EXISTENCE OF ANY UNDERGROUND UTILITY PIPE OR STRUCTURE WITHIN THE LIMITS OF THIS PROJECT.

THIS DRAWING AND THE DATA HEREON ARE HEREBY MADE A PART OF THE SPECIFICATIONS.

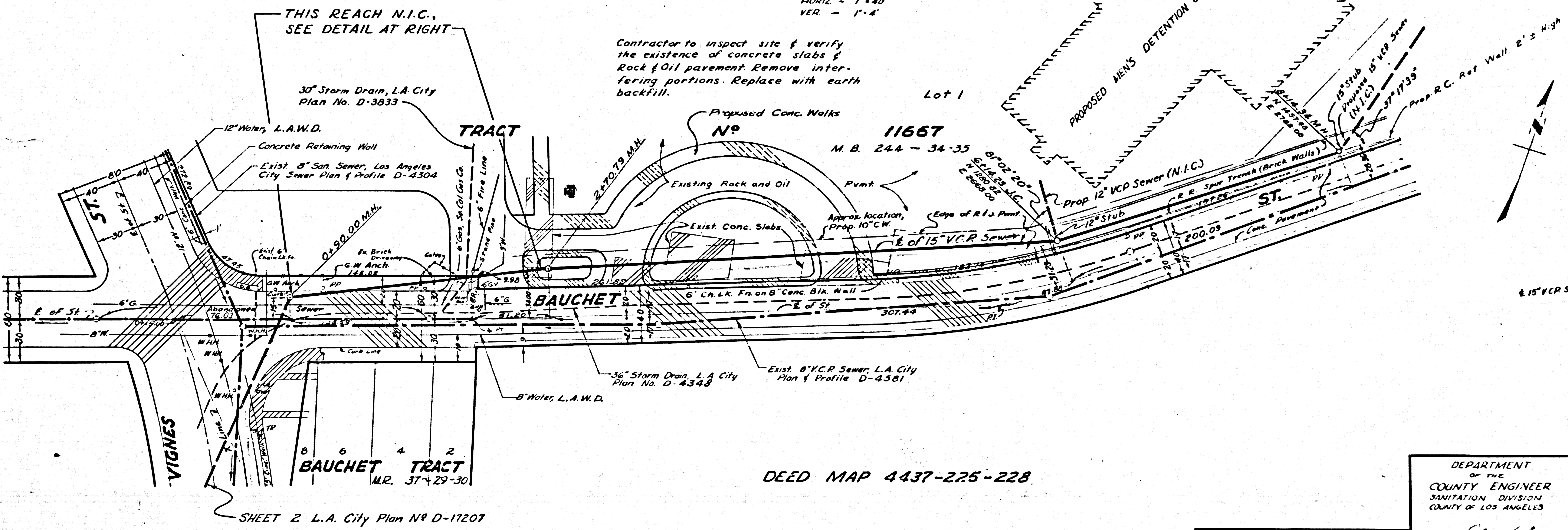
TOPS OF SEWER STRUCTURES SHALL BE ADJUSTED TO PROPOSED FINISH GRADE.

FOR LEGEND SEE PLAN S-a-64.

CONSTRUCTION OF SEWER SHALL COMPLY WITH THE FOLLOWING COUNTY ENGINEER'S STANDARD PLANS: S-a-120, S-a-152, S-a-166, S-a-171, S-a-172, & S-a-179.

SCALES:
 HORIZ - 1" = 40'
 VER. - 1" = 4'

Contractor to inspect site & verify the existence of concrete slabs & Rock & Oil pavement. Remove interfering portions. Replace with earth backfill.



DETAIL AT STA 2+70.79

32844 A

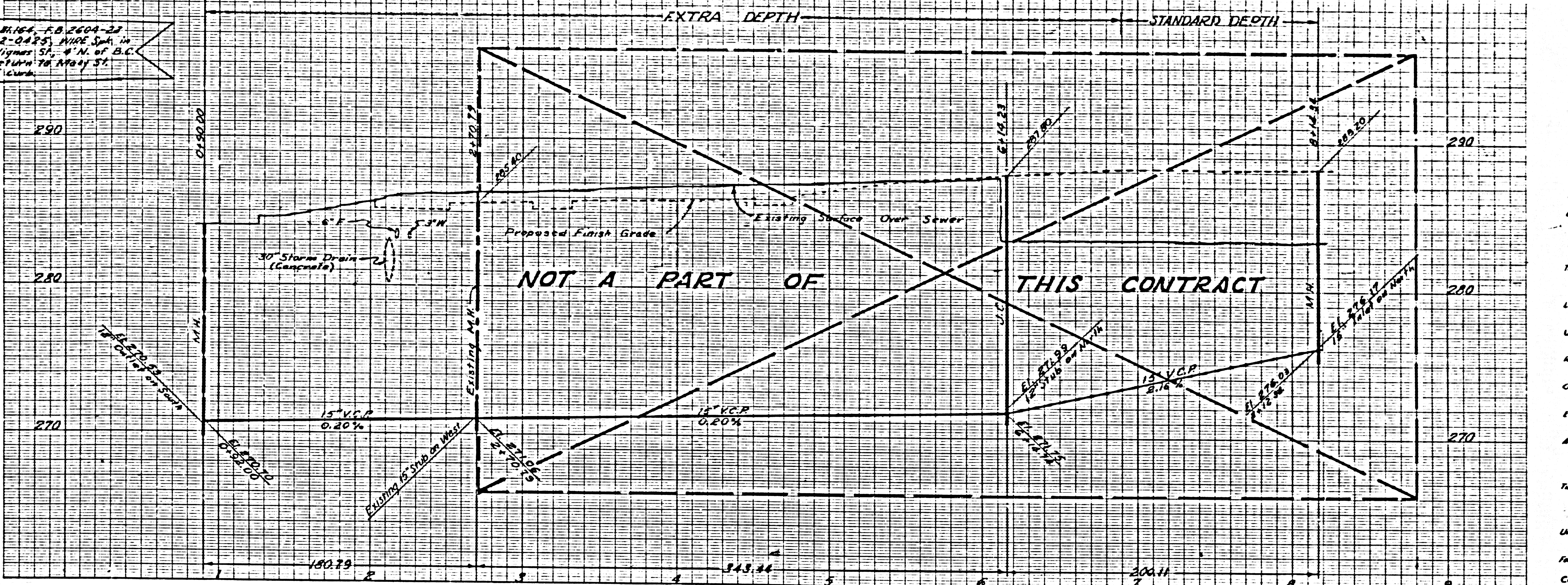
SHEET 2 L.A. City Plan N9 D-17207

DEED MAP 4437-225-228

APPROVED *L. J. Peterson* DATE 3-19-64
 FOR SHERIFF, L.A. COUNTY

DEPARTMENT OF THE COUNTY ENGINEER SANITATION DIVISION COUNTY OF LOS ANGELES	DATE DEC. 1961	SANITARY SEWER	PROJECT NO. 8535
RECOMMENDED BY <i>[Signature]</i>	DESIGNED BY <i>[Signature]</i>	MEN'S CENTRAL JAIL FACILITY	ESTIMATE PRICE 8536.02
APPROVED BY <i>[Signature]</i>	CHECKED BY <i>[Signature]</i>		SHEET NO. SAN-2
LOS ANGELES COUNTY, CALIFORNIA			

B.M. - EL. 281.64, F.B. 2604-27
 B.M. - IN 12-0475, WIRE SPA. IN
 W. CURB VIGNES ST., 4' N. OF E.C.
 OF CH. RETAINING WALL ST.
 S. END OF CURB.



GENERAL NOTES

USE EXTRA STRENGTH PIPE.

USE MECHANICAL COMPRESSION JOINTS FOR ALL VITRIFIED CLAY PIPE PER SEC. 36 OF SPECIFICATIONS.

THE CONTRACTOR SHALL NOTIFY THE SANITATION DIVISION BY TELEPHONE MADISON 9-4747, EXT. 81251 AT LEAST 24 HOURS BEFORE STARTING ANY WORK UNDER THIS CONTRACT.

LOS ANGELES COUNTY STANDARD SEWER SPECIFICATIONS DATED OCTOBER 25, 1961 APPLY TO THIS SHEET.

USE PARABOLA NO. 1, SEC. 36 OF SPECIFICATIONS TO COMPUTE ALLOWABLE LEAKAGE.

RESURFACE TRENCH WITH BAUCHET SET IN ACCORDANCE WITH L.A. CITY STANDARD SPECIFICATIONS AND 100, AS APPLICABLE.

GRADES TO WHICH THIS SEWER IS TO BE RECONSTRUCTED ARE SHOWN ON THIS PLAN & PROFILE. IF ALL PARTS BETWEEN DESIGNATED POINTS FOR GRADES SHALL BE ESTABLISHED AS TO CONFORM TO A STRAIGHT LINE BETWEEN THE DESIGNATED POINTS, ELEVATIONS ARE IN FEET ABOVE U. S. C. T. G. S. SEA LEVEL, DATUM 48 OF 1929.

APPROVAL BY THIS PLAN BY THE COUNTY OF LOS ANGELES DOES NOT CONSTITUTE A REPRESENTATION AS TO THE ACCURACY AS TO THE LOCATION OR OR THE EXISTENCE OR NON-EXISTENCE OF ANY UNDERGROUND UTILITY PIPE OR STRUCTURE WITHIN THE LIMITS OF THIS PROJECT.

THIS DRAWING AND THE DATA HEREON ARE HEREBY MADE A PART OF THE SPECIFICATIONS.

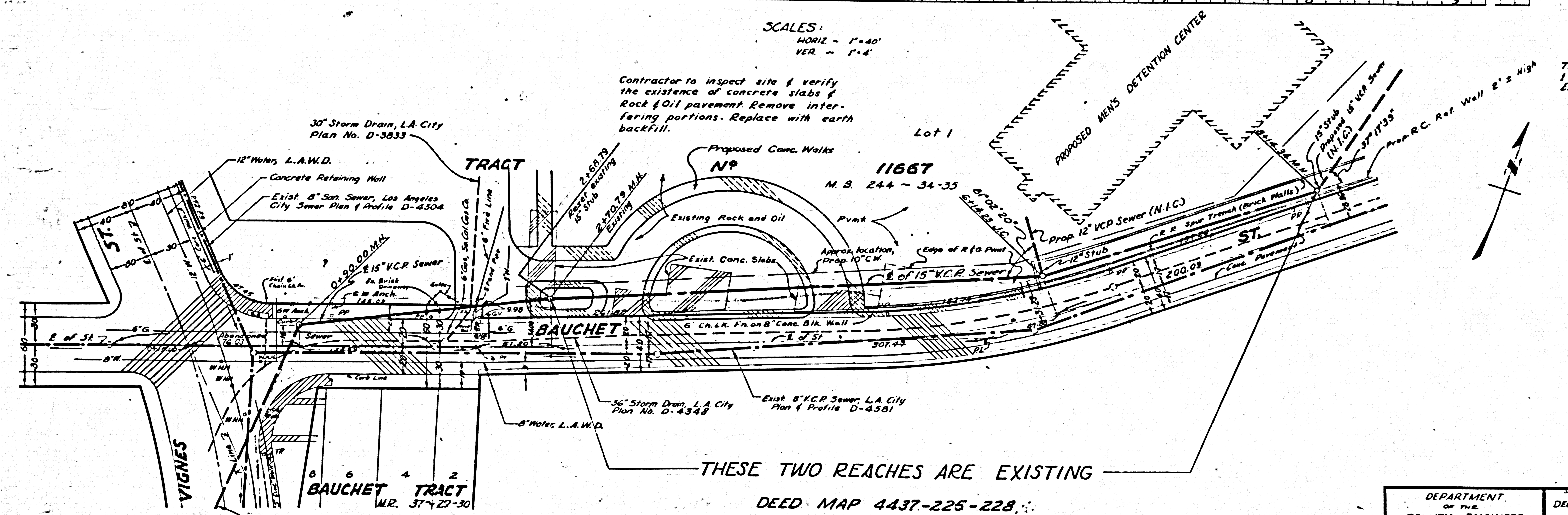
UNIT PRICES FOR ADDITIONAL WORK WHICH MAY BE REQUIRED BY THIS COUNTY OR AS AUTHORIZED IN ADVANCE SHALL BE SUBMITTED IN THE PROPOSAL.

FOR LEGEND SEE PLAN 3-D-64.

CONSTRUCTION OF SEWER SHALL ALSO COMPLY WITH THE FOLLOWING COUNTY ENGINEER'S STANDARD PLANS: 3a-120, 5a-166, 3a-172, 3a-173, 3a-180.

SCALES:
 HORIZ. - 1" = 40'
 VER. - 1" = 4'

Contractor to inspect site & verify the existence of concrete slabs & Rock & Oil pavement. Remove interfering portions. Replace with earth backfill.



THESE TWO REACHES ARE EXISTING
 DEED MAP 4437-225-228

TRACT
 11667
 M.B. 244-34-35

TRACT
 BAUCHET
 M.R. 37-27-30

SHEET 2 L.A. City Plan No. D-17207

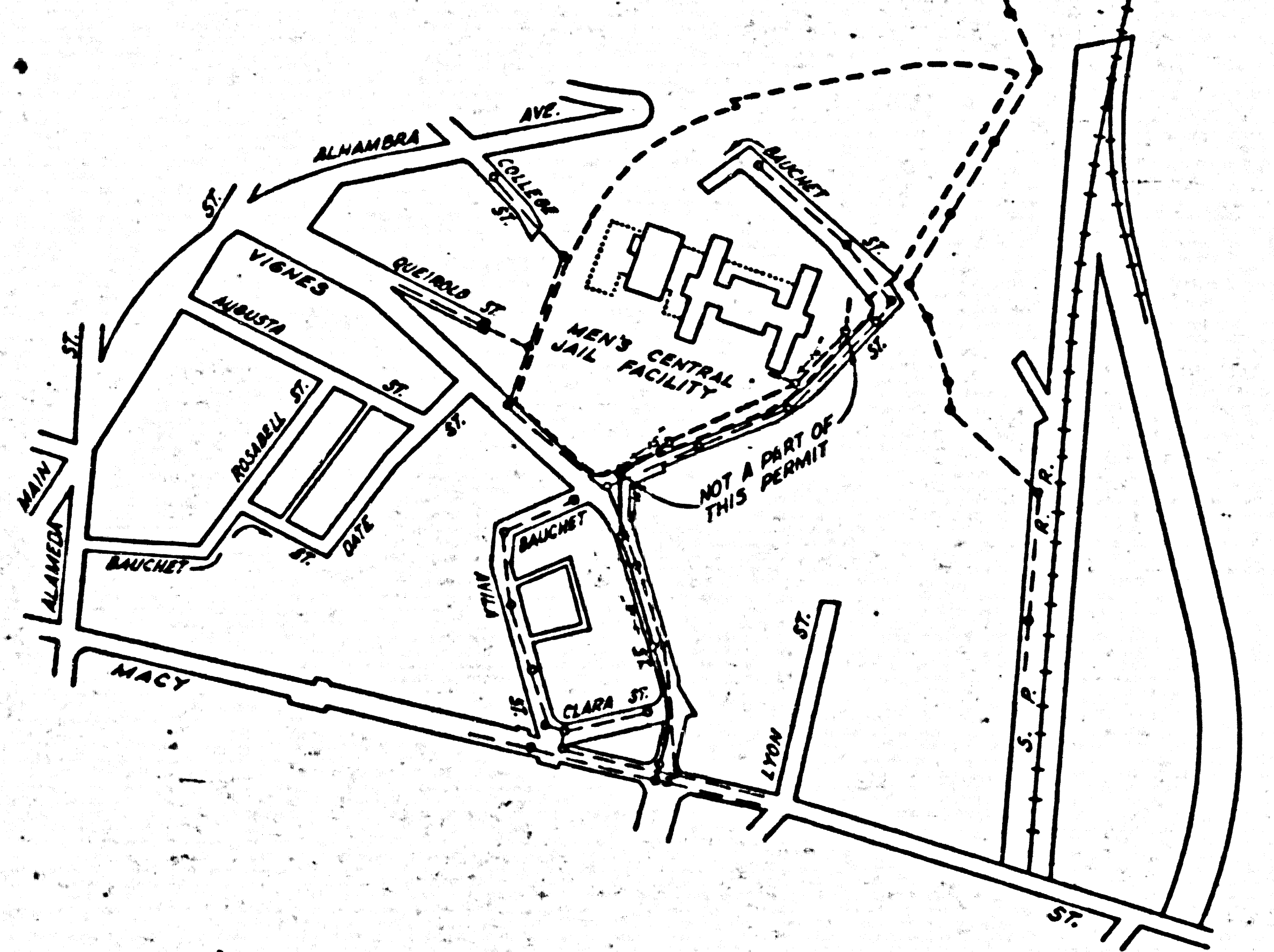
DEPARTMENT OF THE COUNTY ENGINEER SANITATION DIVISION COUNTY OF LOS ANGELES	DEC. 1961	SANITARY SEWER MEN'S CENTRAL JAIL FACILITY LOS ANGELES COUNTY, CALIFORNIA	SHEET NO. 0536
	CHECKED BY NAME & DATE 5130		TOTAL PROJECT 8536.06
APPROVED DATE 3-19-62 FOR SEWER, L.A. COUNTY	RECOMMENDED BY DATE 3-19-62	SAN-3 OF 3 SHEETS	SHEET NO. SAN-3

INDEX OF SHEETS

- TITLES, NOTES, KEY MAP
- VIGNES ST. - MACY ST. TO STA. 8+76.34

11. TRAFFIC LANE REQUIREMENTS
 MACY ST. AT VIGNES ST.: THREE LANES IN EACH DIRECTION BETWEEN THE HOURS OF 6:00 A.M. TO 9:00 A.M. AND 3:00 P.M. TO 6:00 P.M. ONE LANE IN EACH DIRECTION AT ALL OTHER TIMES.
 VIGNES ST. BETWEEN MACY ST. AND BAUCHET ST.: TWO LANES SOUTH BOUND AND ONE NORTH BOUND AT ALL TIMES.
 VIGNES ST. AT BAUCHET ST.: ONE LANE IN EACH DIRECTION BETWEEN THE HOURS OF 9:00 A.M. AND 3:00 P.M.

12. The Department of Traffic of the City of Los Angeles will post "Temporary No Parking" signs along the site of work (including State Highways) within the city limits upon 24-hour notice from the contractor. The posting of such signs and their removal will be done at the expense of the contractor.
 13. Traffic lanes shall have a minimum width of ten (10) feet and clearance of two (2) feet to curbs, barricades, or other vertical obstructions, and five (5) feet to any open excavation.



KEY MAP
 SCALE - 1"=400'

NOTICE TO CONTRACTORS (CONT.)

6. BENCH MARK DATA: B.M. #12-04250, EL. 281.164, WIRE 5PK. IN W. CURB VIGNES ST. 4' N. OF B.C. OF CURB RETURN TO MACY ST. - S. END OF C.B. COUNTY ENGR. F.B. 2604-22.

7. RESURFACING SCHEDULE:

STATION	LIN. FT.	CLASS
0+00 TO 7+96	796	8" C.C.
7+96 TO 8+76.34	80	8" Comp.

8. ALL MANHOLE STEPS FURNISHED AND USED ON THIS PROJECT SHALL BE SEWER STEPS, 14" WIDE WITH A LEG LENGTH OF 12" MADE OF 3/4" ROUND STEEL AND GALVANIZED; SIMILAR TO APEX STEEL CORPORATION'S STEP N° X-407A.

9. SEWER MANHOLES: FOR SEWER MANHOLES TO BE CONSTRUCTED OR REMODELED ON EXISTING SEWERS, THE ENTIRE SEWER WITHIN THE MANHOLE SHALL BE COMPLETELY REMOVED BEFORE BOTTOM CHANNELS ARE FORMED. SEWAGE SHALL BE CONVEYED ACROSS THE MANHOLE LOCATION BY PUMPING, BYPASSING THROUGH A TIGHT FITTING METAL SLEEVE, OR OTHER MEANS SATISFACTORY TO THE CITY ENGINEER UNTIL THE CONCRETE CHANNELS ARE NOT LESS THAN FIVE DAYS OLD. UNDER NO CIRCUMSTANCES SHALL SEWAGE BE PERMITTED TO FLOW OVER CONCRETE CHANNELS UNTIL THEY ARE FIVE DAYS OLD.

10. Existing traffic signal equipment shall be protected by the contractor. Should equipment be damaged by the contractor, immediate notification shall be given to the Signal Construction Superintendent, Madison 4-5711, extension 2181. Such damaged equipment shall be replaced by the contractor, at his expense, and inspected by the Signal Construction Superintendent before signal circuits are energized.

PLAN AND PROFILE
 OF SANITARY SEWER
 IN
 VIGNES STREET
 FROM
 BAUCHET STREET TO MACY STREET

CITY OF LOS ANGELES
 LYALL A. PARDEE CITY ENGINEER

DATUM NOTE
 U. S. & S. DATUM EFFECTIVE JULY 1, 1955 ORDINANCE NO. 63232 DEDUCT 5.775 FEET TO ADJUST TO DATUM PLANE IN USE PRIOR TO SAID DATE

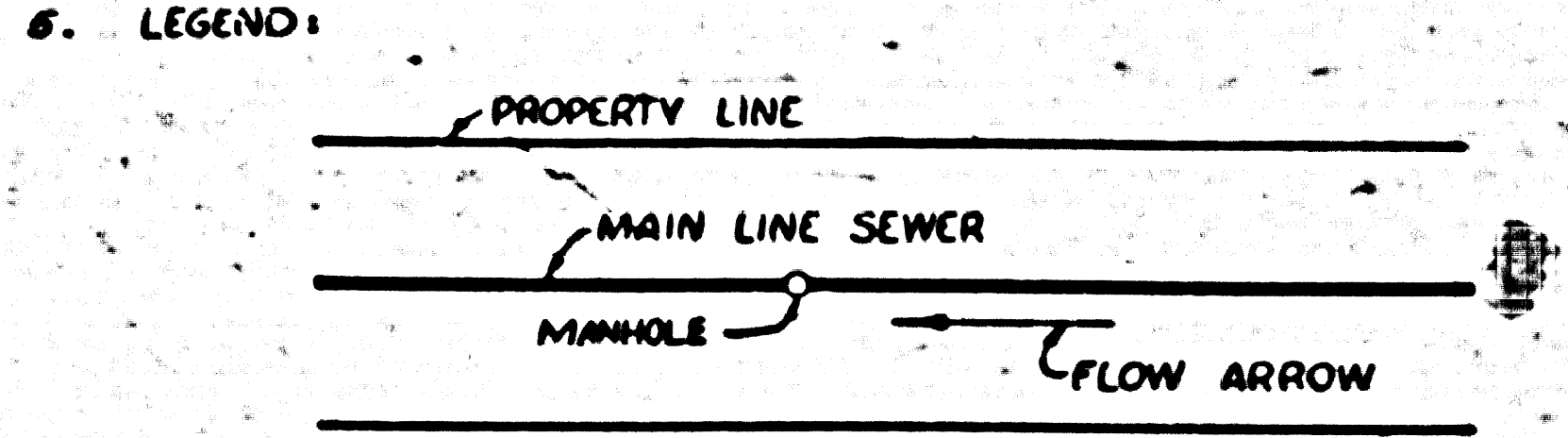
REFERENCES

- FIELD BOOK NO. Private Survey
- DATE OF SURVEY
- DISTRICT MAP NO. 112-B-212 & U. S. MAP NO.
- ASSESSMENT MAP NO. DIV. 54
- DRAINAGE MAP NO. 312, S.E.
- SUPPLEMENTAL PROFILE NO.

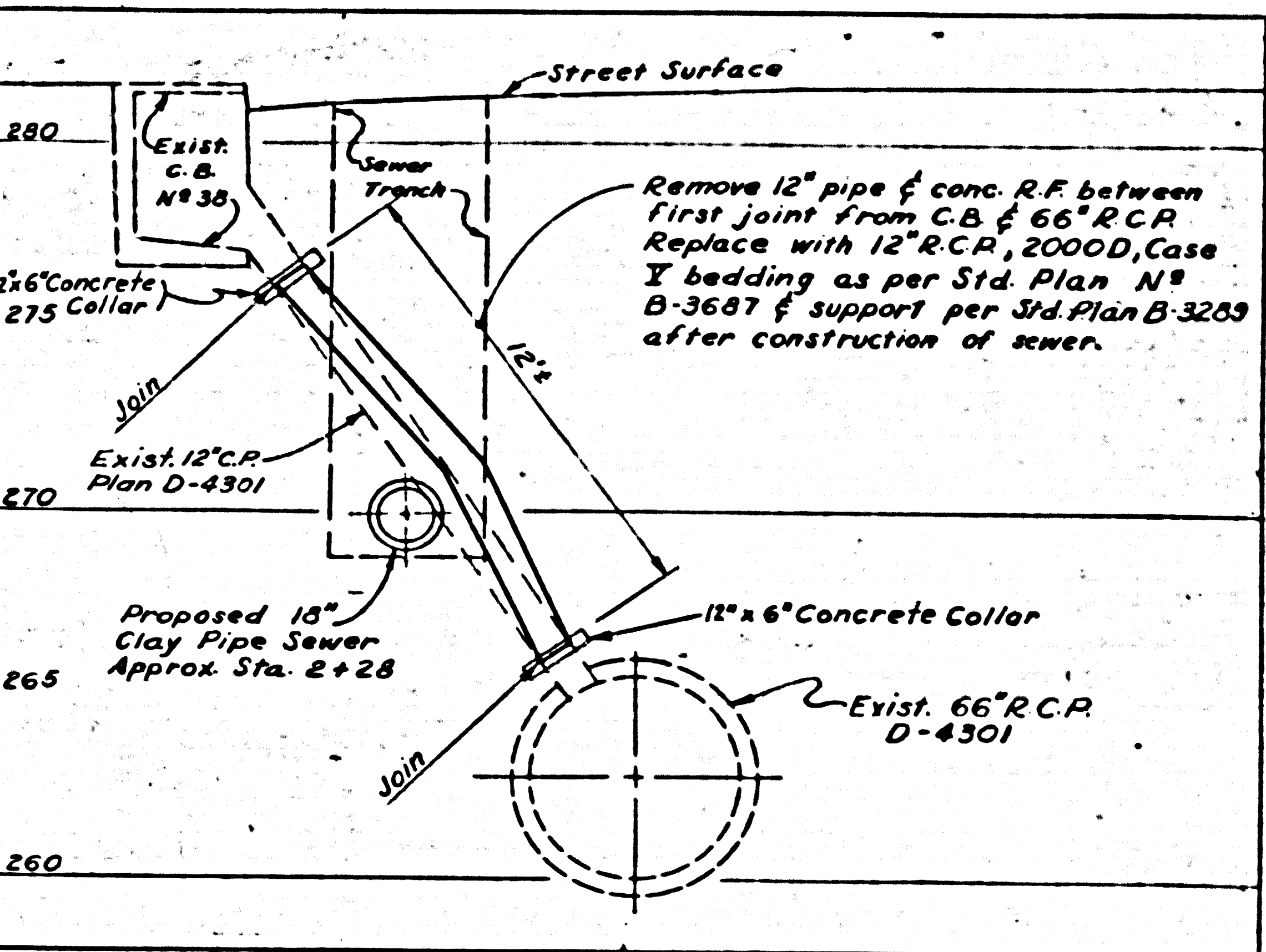
NOTICE TO CONTRACTORS
 THIS IMPROVEMENT ALSO INCLUDES WORK CALLED FOR ON THE FOLLOWING SPECIAL PLANS AND PROFILES

- STREET AND PROFILE NAME
- SEWER PLANS NAME
- STORM DRAIN PLANS NAME
- STRUCTURAL PLANS NAME
- ORNAMENTAL LIGHTING PLANS NAME
- EXISTING MANHOLES (DETAILS) STORM DRAIN
- SEWER

- ALL WORK DETAILED ON THESE PLANS TO BE PERFORMED UNDER CONTRACT SHALL, EXCEPT AS OTHERWISE STATED OR PROVIDED FOR HEREON, BE CONSTRUCTED IN ACCORDANCE WITH STANDARD SPECIFICATIONS NO. 15B AS AMENDED BY AMENDMENT NO. 1.
- IN LIEU OF 15% MAXIMUM ABSORPTION SPECIFIED IN SUBSECTION 27-2 OF STANDARD SPECIFICATIONS NO. 15B, THE ABSORPTION OF ANY INDIVIDUAL BRICK SHALL NOT BE MORE THAN 16% WHEN SUBMERSED IN COLD WATER FOR 24 HOURS.
- UNLESS OTHERWISE SHOWN ON THE PLANS, THE CONTRACTOR SHALL EXCAVATE TRENCH AND BED THE PIPE AS SHOWN FOR CASE I BEDDING ON STANDARD PLAN B-3687.
- LIST OF STANDARD PLANS FOR THIS PROJECT:
 M.H. 18" STD. PLAN NO. B-2925
 M.H. 14" STD. PLAN NO. B-2955
 J.C. 7" STD. PLAN NO. B-2999
 PIPE LAYING IN TRENCHES STD. PLAN NO. B-3687
 SUPPORT PIPE ACROSS TRENCHES STD. PLAN NO. B-3289
 NOTICE TO CONTRACTORS STD. PLAN NO. B-3687



NOTE:
 THESE TWO SHEETS
 ACCOMPANY P.C. 5130



DETAIL FOR RECONSTRUCTION OF CATCH BASIN CONNECTION PIPE AT STA. 2+22.
 Scale: 1/4" = 1'-0"

PREPARED IN THE OFFICE OF
 JOHN A. LAMBIE, COUNTY ENGINEER
 COUNTY OF LOS ANGELES, CALIFORNIA

APPROVED: [Signature] DATE: 2/6/62
 SANITATION DIVISION ENGINEER

VIGNES ST. BAUCHET ST. TO MACY ST. SEWER DISTRICT
 CHECKING PERMIT BD-3402 CONSTRUCTION PERMIT B-

APPROVALS			SUBMITTED	
DIVISION OR DEPT.	ENGINEER	DATE	DATE	BY
STREET & HIGHWAY	[Signature]	2/6/62	March 5 1962	[Signature]
SEWER DISTRICT	[Signature]	2-8-62		[Signature]
STREET LIGHTS	[Signature]	2/17/62		[Signature]
UTILITY & ESTIM.	[Signature]	2-28-62		[Signature]
TRAFFIC DEPT.	[Signature]	3-19-62		[Signature]

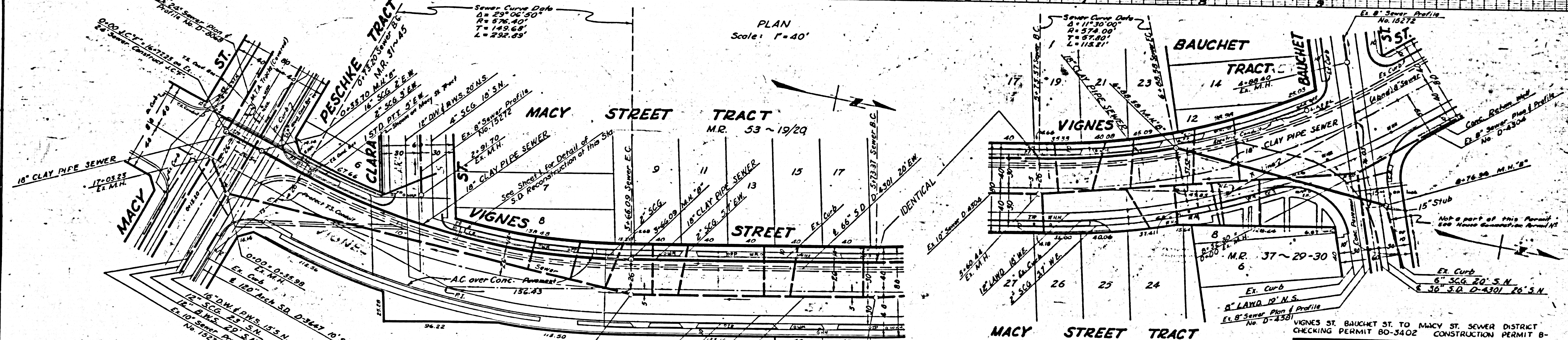
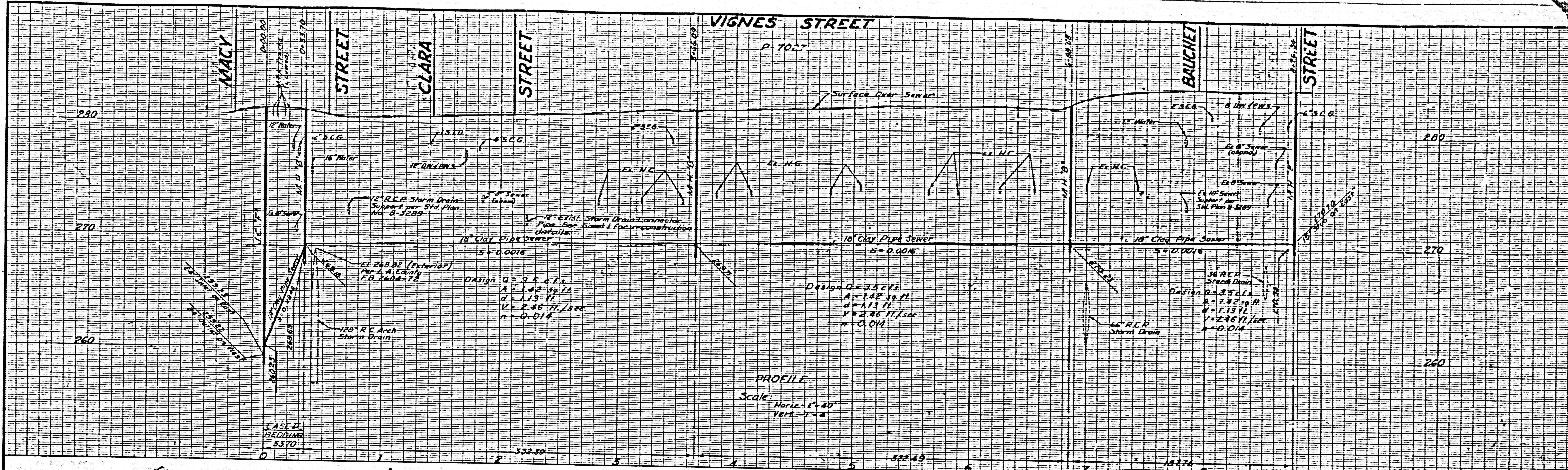
SHEET NO. 1 OF 2 SHEETS
 D-17207

D-17501

PROPERTY OF THE CITY OF LOS ANGELES

Designed By: *Robert B. Brown*
Checked By: *Herbert C. Brown*
Reviewed By: *Herbert C. Brown*

D-17501



TRACT No. 10151 M.B. 157 ~ 45-47

TRACT No. 53 ~ 19/20

TRACT No. 53 ~ 19/20

NOTE:
THESE TWO SHEETS ACCOMPANY P.C. 5130

SUBMITTED <i>March 5, 1962</i> BY <i>Herbert C. Brown</i> DEPUTY ENGINEER DESIGN	APPROVED <i>MARCH 19, 1962</i> BY <i>J. Paul Pardee</i> CITY ENGINEER
--	---

CITY OF LOS ANGELES
LYALL A. PARDEE CITY ENGINEER
PLAN AND PROFILE
OF SANITARY SEWER
IN
VIGNES STREET
FROM
BAUCHET STREET TO MACY STREET

SHEET NO. 2 OF 2 SHEETS D-17207