

TEMPLE CITY BLDG. DIST. NO. 5

PROFILE ALIGNMENT AND GRADE OF P.C. 5132
 SANITARY SEWERS PAGE 1
 TO BE CONSTRUCTED IN A
 SANITARY SEWER E/W
 WEST OF COGSWELL ROAD

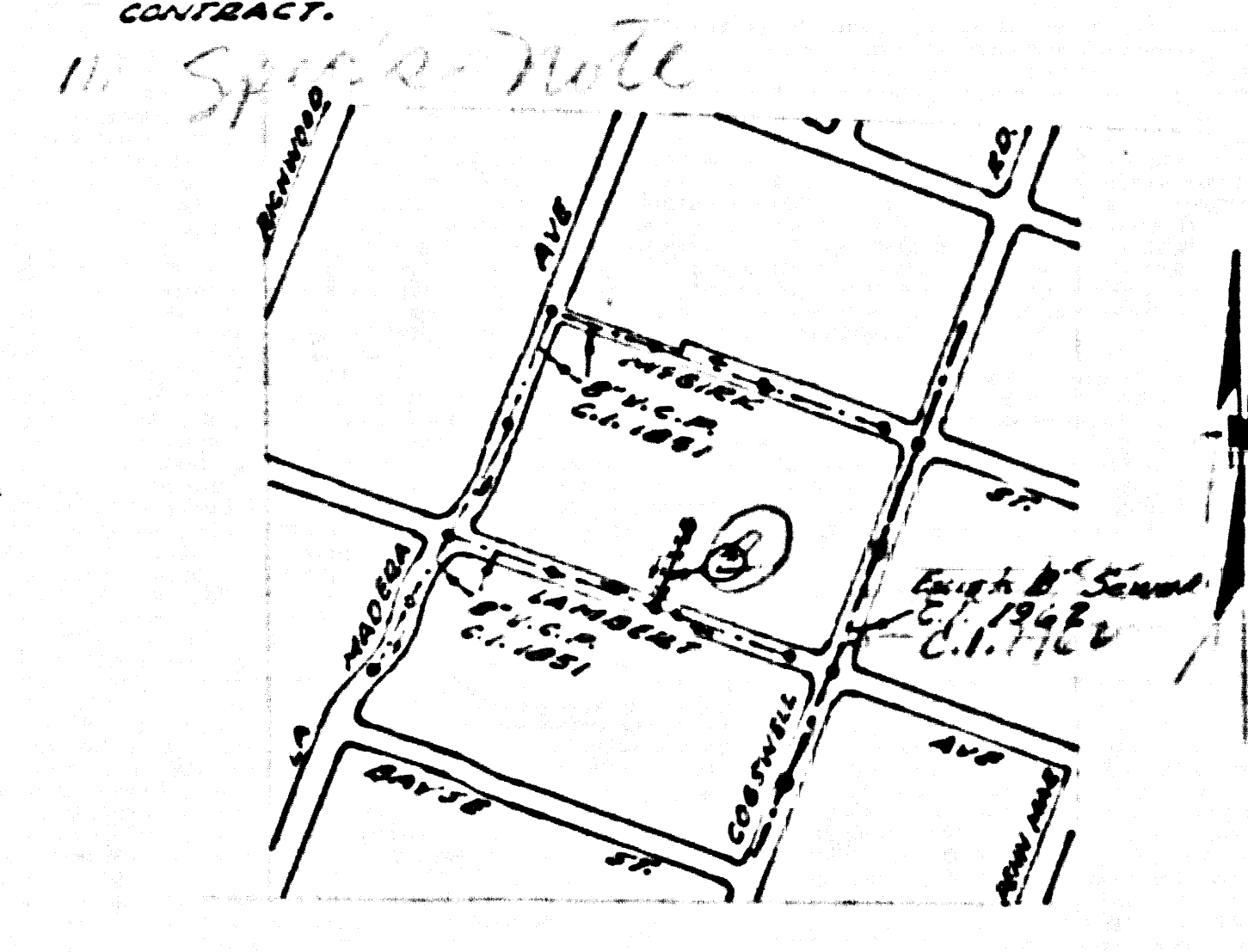
PRIVATE CONTRACT NO. 5132

W.S. 446
 1 SHEET, 2 PAGES
 SCALE: VERT. 1"=6'
 HORIZ. 1"=40'
 APRIL, 1959
 PREPARED IN THE OFFICES OF
 M. M. FINLEY CO.
 5102 S. LAS TUNAS
 TEMPLE CITY, CALIF.
 BY: Jean H. Moore
 REG. C. E. NO. 4122
 FOR LEGEND SEE PLAN NO. S-A-64

B.M. T.F. 174, ELEV. 306.257, E.S. 1754, S. 131
 Spring Road & La Madona S.E. Cor.
 84' 3/4" at 22' 57" of 1/4" section

- NOTES
- PROVIDE STAKES ON THE PROPERTY LINE OR PROPERTY LINES PRODUCED AT RIGHT ANGLES TO THE SEWER LINE AT THE CENTER LINE OF EACH MANHOLE.
 - NO REPRESENTATIVE OF THE COUNTY ENGINEER WILL SURVEY OR LAYOUT ANY PORTION OF THE WORK.
 - THE OWNER OR HIS AUTHORIZED REPRESENTATIVE SHALL FURNISH THE COUNTY ENGINEER WITH GRADE SHEETS AND STATION FOR ALL HOUSE LATERALS AND Y BRANCHES AND SHALL PROVIDE STAKES FOR THEM AT THEIR PROPER LOCATIONS WITH STATIONING PLAINLY MARKED. ANY CHANGE IN LOCATION SHALL BE REQUESTED BY WRITING BY THE OWNER OR HIS REPRESENTATIVE.
 - NO REVISIONS SHALL BE MADE IN THESE PLANS WITHOUT THE APPROVAL OF THE COUNTY ENGINEER.
 - USE STANDARD MANHOLE FRAMES AND COVERS, S.A. 1171.
 - USE STANDARD STRENGTH PIPE.
 - USE CEMENT MORTAR OR "WATER-LOCK" OR "SPEED-SEAL" FOR VITRIFIED CLAY PIPE.
 - REINFORCE ALL TRENCH WITH RAYED AREA TO MEET L.A. COUNTY ROAD DEPT., OR CALIF. STATE HIGHWAY DEPT. REQUIREMENTS IN ACCORDANCE WITH PERMITS.
 - ENCASE FOUR FEET OF SEWER AT POINTS OF INTERFERENCE WITH POLES, S.A. 1172, CASE 22, E. 22.
 - HOUSE LATERALS TO BE CONSTRUCTED WITH INVERTS AT PROPERTY LINE 6" BELOW CURB GRADE EXCEPT AS NOTED.
 - ALL STRUCTURES SHALL BE AS SEWER STRUCTURES, S-A-104.
 - FOR ALLOWABLE LEAKAGE TEST USE FORMULA NO. 1, SPEC. SEC. 54-54.
 - MANHOLE TOPS IN UNIMPROVED RIGHTS-OF-WAY TO BE 6" ABOVE FINISHED GRADE.
 - THE CONTRACTOR SHALL NOTIFY THE CONSTRUCTION AND SPARK DEPARTMENT BY TELEPHONE IMMEDIATELY AT LEAST 24 HOURS BEFORE STARTING ANY WORK UNDER THIS CONTRACT.

NO CHARGE FOR CONNECTIONS



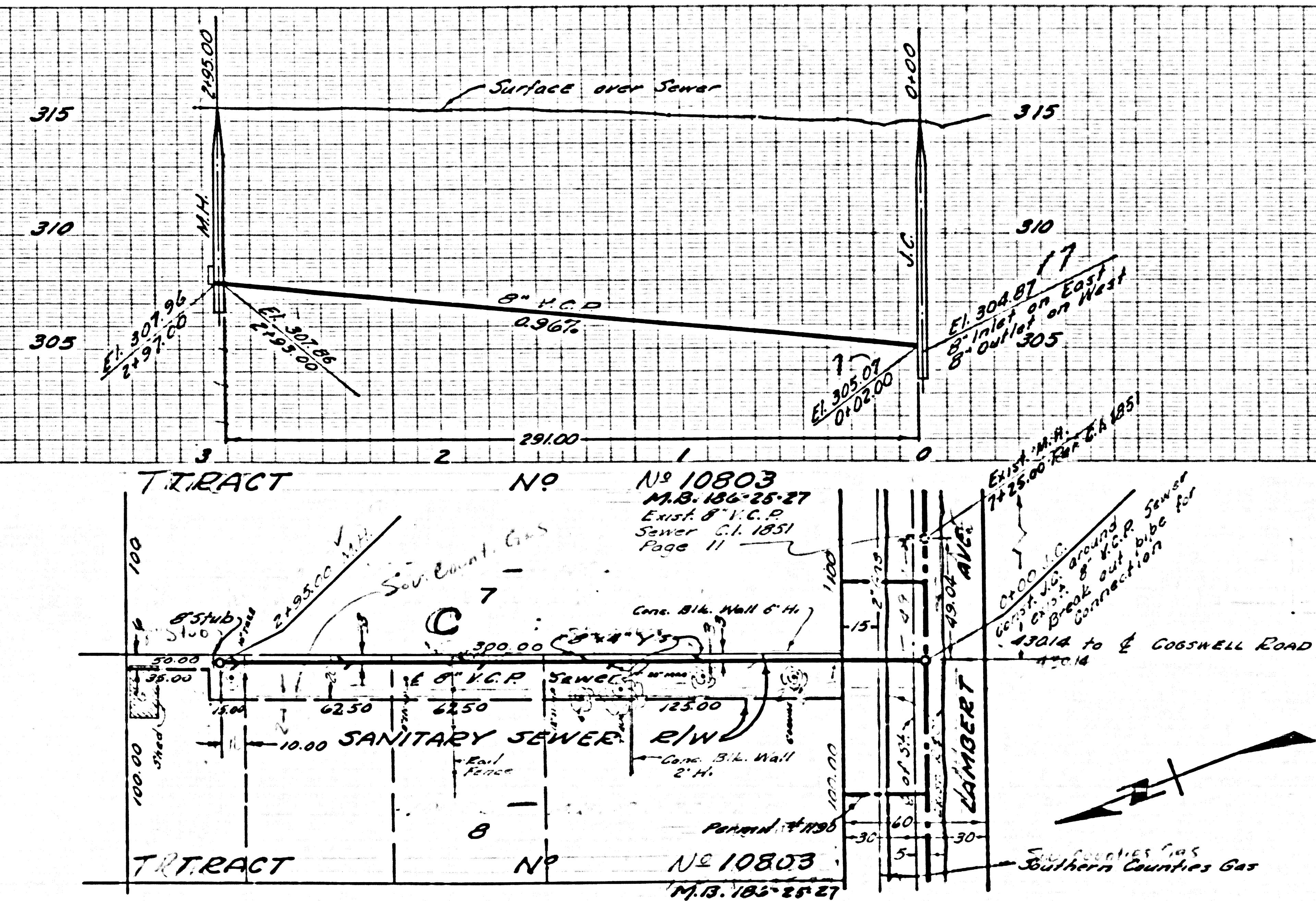
4-04.7
 10.3
 100.56
 100
 6475.75
 1146.10
 6-25-28
 4-30-14

NOTE: GRADES TO WHICH THIS IMPROVEMENT IS TO BE CONSTRUCTED ARE SHOWN ON PLANS AND PROFILES. GRADE POINTS FOR TOP OF CURBS, CENTER LINE OF STREETS, OR CENTER LINE OF ALLEYS ARE SHOWN BY CIRCLES ON PROFILES. AT ALL POINTS BETWEEN DESIGNATED POINTS THE GRADE SHALL BE ESTABLISHED SO AS TO CONFORM TO A STRAIGHT LINE DRAWN BETWEEN SAID DESIGNATED POINTS. ELEVATIONS ARE IN FEET ABOVE U.S.C. & G.S. DATA. ALL ELEVATIONS ARE TO BE TAKEN FROM THE BENCHMARK SHOWN ON THESE PLANS AND THE DATA HEREON ARE HEREBY MADE A PART OF THE SPECIFICATIONS. WORK SHALL BE CONSTRUCTED ACCORDING TO SPECIFICATIONS ON FILE IN THE OFFICE OF THE COUNTY ENGINEER AND SHALL BE PROSECUTED ONLY IN THE PRESENCE OF THE COUNTY ENGINEER. BEFORE WORK CAN BE STARTED, THE CONTRACTOR MUST OBTAIN A PERMIT TO EXCAVATE IN COUNTY STREETS FROM THE COUNTY ROAD DEPT., S.D.T. 105, AND MAKE A DEPOSIT WITH THE COUNTY ENGINEER, ROOM 224 SAN JUAN ANTEQUA BUILDING, 215 SO BROADWAY SUFFICIENT TO COVER THE COST OF CONSTRUCTION INSPECTION AND RECORD PLANS. APPROVAL OF THIS PLAN BY THE COUNTY OF LOS ANGELES DOES NOT CONSTITUTE A REPRESENTATION AS TO THE ACCURACY OF THE LOCATION OF OR THE EXISTENCE OR NON-EXISTENCE OF ANY UNDERGROUND UTILITY PIPE, OR STRUCTURE WITHIN THE LIMITS OF THIS PROJECT. THIS NOTE APPLIES TO ALL PAGES. IF WORK IS TO BE DONE IN A STATE HIGHWAY, A PERMIT MUST BE OBTAINED FROM THE STATE OF CALIFORNIA, DIVISION OF HIGHWAYS, 128 SOUTH SPRING STREET.

COUNTY OF LOS ANGELES, CALIFORNIA
 APPROVED, JOHN A. LAMBE, COUNTY ENGINEER
 APPROVED, C.E. CONYER, CHIEF ENGINEER
 CO. SAN. DIST. NO. 615
 BY: _____ SANITATION ENGINEER
 BY: _____ OFFICE ENGINEER
 CHECKED BY: _____
 OFFICE OF COUNTY ENGINEER, REG. C. E. NO. _____
 SUBMITTED: _____
 SAN GABRIEL VALLEY REGIONAL ENGINEER

P.C. 5132 PAGE 2

NO CHARGE FOR CONNECTIONS



Show Topo Section Topo Notes

2105 AP.36 Heavy up your left side. Show edge of R40. Print in red ink on back.