

LENNOX BLDG. DIST. NO. 7

PROFILE ALIGNMENT AND GRADE OF P.C. 5138
 SANITARY SEWERS PAGE 1
 TO BE CONSTRUCTED IN J.N. 0350.80

EL SEGUNDO BLVD. CROSSING

PRIVATE CONTRACT NO. 5138

W.S. 26
 1 SHEETS, 2 PAGES

SCALE: VERT. 1"=4' HORIZ. 1"=40'

OCTOBER, 1959

PREPARED IN THE OFFICES OF

BARCLAY-PEARSON CO., INC.

348 HAWTHORNE WAY, HAWTHORNE, CALIF.

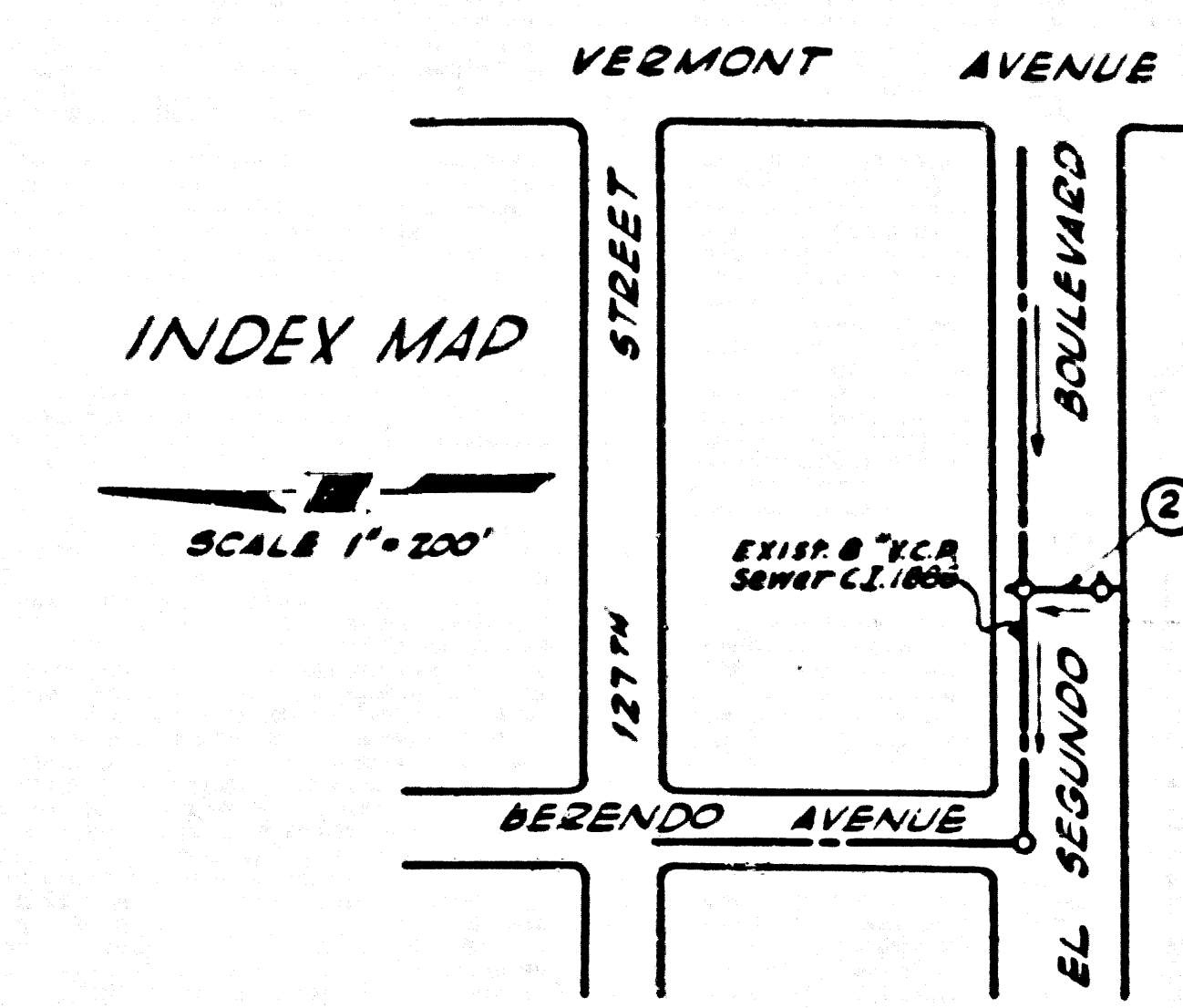
Edward J. Pearson
 REG. C. E. NO. 2723

FOR LEGEND SEE PLAN NO. S-A-64

28,636

BENCH MARK
 BY 8007 OF L.A. CIV. & S.
 MANU. E. EL SEGUNDO BLVD. 225'
 W. of E. cd. 17th Vermont Ave.
 (max. drill steel) Elev. 154.316
 Nails Quod 1855

NO CHARGE
 FOR CONNECTIONS
 Arthur B. Roddy



- NOTES
1. PROPERTY STAKES ON THE PROPERTY LINE OR PROPERTY LINES PRODUCED AT RIGHT ANGLES TO THE SEWER LINE AT THE CENTER LINE OF EACH MANHOLE.
 2. NO REPRESENTATIVE OF THE COUNTY ENGINEER WILL SURVEY OR LAY OUT ANY PORTION OF THE WORK.
 3. THE OWNER OR HIS AUTHORIZED REPRESENTATIVE SHALL FURNISH THE COUNTY ENGINEER WITH GRADE SHEETS AND STATIONING FOR ALL HOUSE LATERALS AND Y BRANCHES AND SHALL FURNISH STAKES FOR THEM AT THEIR PROPER LOCATIONS WITH STATIONING PLAINLY MARKED. ANY CHANGE IN LOCATION SHALL BE REQUESTED BY THE OWNER OR HIS REPRESENTATIVE.
 4. THE PRIVATE ENGINEER SHALL FURNISH THE HOUSE LATERAL DEPTH AT THE PROPERTY LINE BELOW THE TOP OF CURB BEHAVIOR FOR EACH HOUSE LATERAL ON THE GRADE SHEET.
 5. NO REVISIONS SHALL BE MADE IN THESE PLANS WITHOUT THE APPROVAL OF THE COUNTY ENGINEER.
 6. USE STANDARD MANHOLE REARMS AND COVERS, S-117, EXCEPT AS NOTED.
 7. USE STANDARD STRENGTH PIPE EXCEPT AS NOTED.
 8. USE CEMENT MORTAR OR "WEDGE-LOCK" OR "SPREAD-SEAL" FOR ALL V.C.P. JOINTS PER SPEC'S, SPEC. 81 & 82.
 9. REPAIRS TO ALL TRACED WITHIN PAVED AREA TO MEET L.A. COUNTY ROAD DEPT. OR CALIF. STATE HIGHWAY REQUIREMENTS IN ACCORDANCE WITH PERMITS.
 10. ENCASE FOUR FEET OF SEWER AT POINTS OF INTERFERENCE WITH POWER, CASE NO. S-172.
 11. HOUSE LATERALS TO BE CONSTRUCTED WITHIN PROPERTY LINE TO PROPERTY LINE TO PROPERTY LINE TO PROPERTY LINE TO PROPERTY LINE.
 12. ALL STRUCTURES SHALL BE BRICK SEWER STRUCTURES, S-104, EXCEPT AS NOTED.
 13. FOR ALLOWABLE LARGEST TEST USE FORMULA NO. 1, SPEC'S, SEC. 84.
 14. MANHOLE TOPS IN UNAPPROVED RIGHTS-OF-WAY TO BE SIX INCHES ABOVE FINISHED GRADE.
 15. THE CONTRACTOR SHALL NOTIFY THE CONSTRUCTION & STREETS DEPARTMENT DIVISION BY TELEPHONE, MARSHON, 9-404, EXT. 263, AT LEAST TWENTY FOUR HOURS BEFORE STARTING ANY WORK UNDER THIS CONTRACT.
 16. All the locations shown for existing substructures have been taken from records and the contractor's responsibility is to verify the locations and to protect them from damage. The contractor shall bear the total expense of repair to any line damaged by any operation in connection with the prosecution of this work.
 17. Standard Specifications dated Jan 10, 1958 apply in the construction of this project.

NOTE: GRADES TO WHICH THIS IMPROVEMENT IS TO BE CONSTRUCTED ARE SHOWN ON PLANS AND PROFILE. GRADE POINTS FOR TOP OF CURB, CENTER LINE OF STREET, OR CENTER LINE OF ALLEYS ARE SHOWN BY CIRCLES ON PROFILES. AT ALL POINTS BETWEEN DESIGNATED POINTS THE GRADE SHALL BE ESTABLISHED SO AS TO CONFORM TO A STRAIGHT LINE BEHAVIOR BETWEEN SAID DESIGNATED POINTS.

REVISIONS ARE IN RED ABOVE U.S. & G.S. SEA LEVEL DATUM OF 1929. THE DRAWING AND THE DATA HEREON ARE HEREBY MADE A PART OF THE SPECIFICATIONS. WORK SHALL BE CONSTRUCTED ACCORDING TO SPECIFICATIONS ON FILE IN THE OFFICE OF THE COUNTY ENGINEER AND SHALL BE INSPECTED ONLY IN THE PRESENCE OF THE COUNTY ENGINEER.

NO WORK CAN BE STARTED, THE CONTRACTOR MUST OBTAIN A PERMIT TO EXCAVATE IN COUNTY STREETS FROM THE L.A. COUNTY ROAD DEPT., DISTRICT OFFICE NO. 8 AND PAY A FEE TO THE COUNTY ENGINEER, ROOM 504 PARK AVENUE, BUREAU, 124 SO. BROADWAY SUFFICIENT TO COVER THE COST OF CONSTRUCTION INSPECTION AND RECORD PLANS.

APPROVAL OF THIS PLAN BY THE COUNTY OF LOS ANGELES DOES NOT CONSTITUTE A REPRESENTATION AS TO THE ACCURACY OF THE LOCATION OF OR THE EXISTENCE OR NON-EXISTENCE OF ANY UNDERGROUND UTILITY PIPE, OR STRUCTURE WITHIN THE LIMITS OF THIS PROJECT. THIS NOTE APPLIES TO ALL PAGES.

IF WORK IS TO BE DONE ON A STATE HIGHWAY, A PERMIT MUST BE OBTAINED FROM THE STATE OF CALIFORNIA, DIVISION OF HIGHWAYS, 120 SOUTH SPRING STREET.

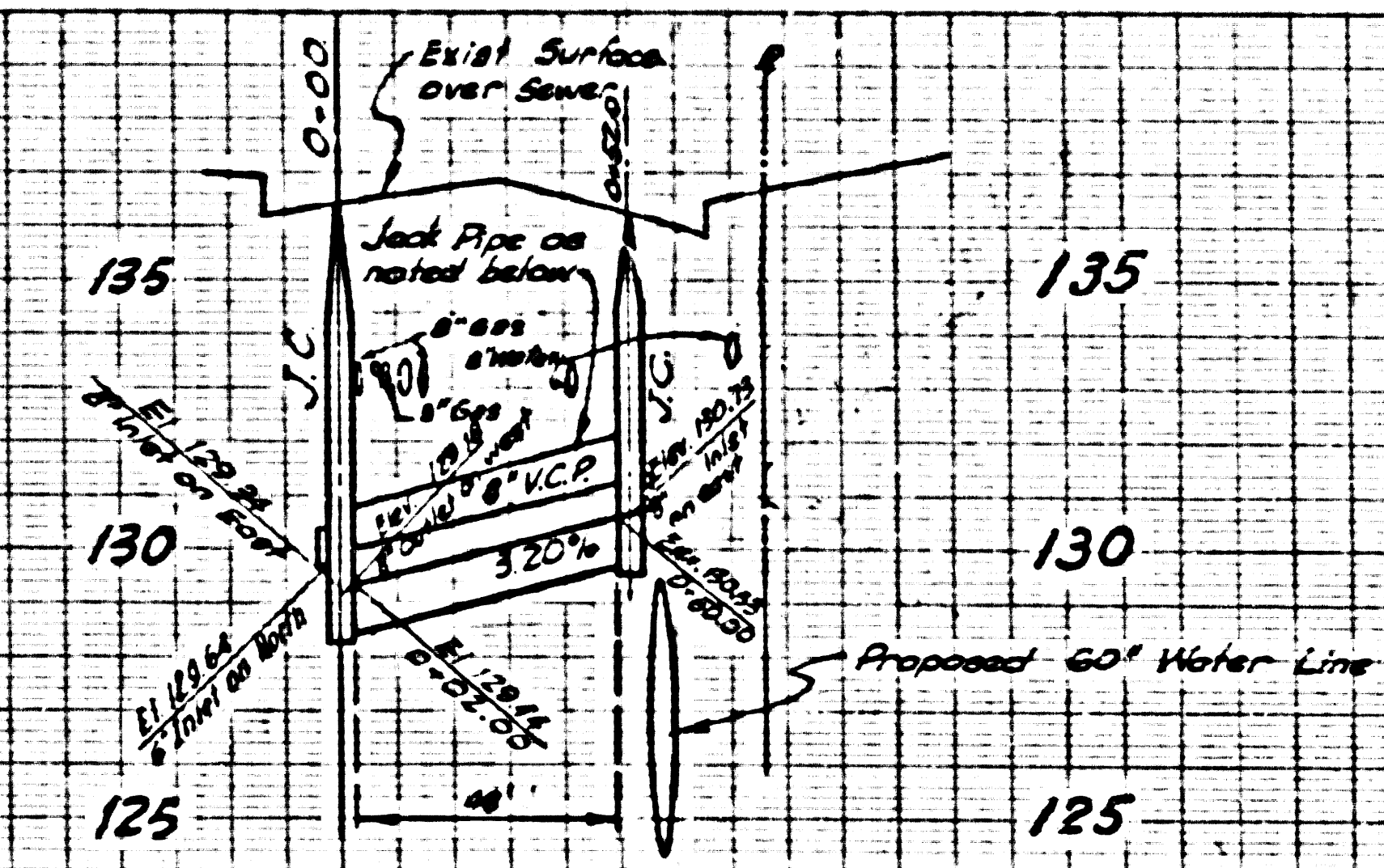
COUNTY OF LOS ANGELES, CALIFORNIA

APPROVED JOHN A. LAMBE, COUNTY ENGINEER
 APPROVED C. R. COMPTON, CHIEF ENGINEER
 BY *[Signature]* ATTY. SANITATION ENGINEER
 BY *[Signature]* OFFICE ENGINEER
 CHECKED BY *[Signature]* 1-14-60
 OFFICE OF COUNTY ENGINEER, 800 S. E. NO. 9484
 SUBMITTED BY *[Signature]*
 City Engineer, California Valley Regional Engineer

P.C. 5138 PAGE 2

NO CHARGE
 FOR CONNECTIONS

28,637



LOT 'W'
 TOWN SITE OF HOWARD
 M.R. 22/59/62

TOWN SITE OF HOWARD
 135.00
 M.R. 52-36

