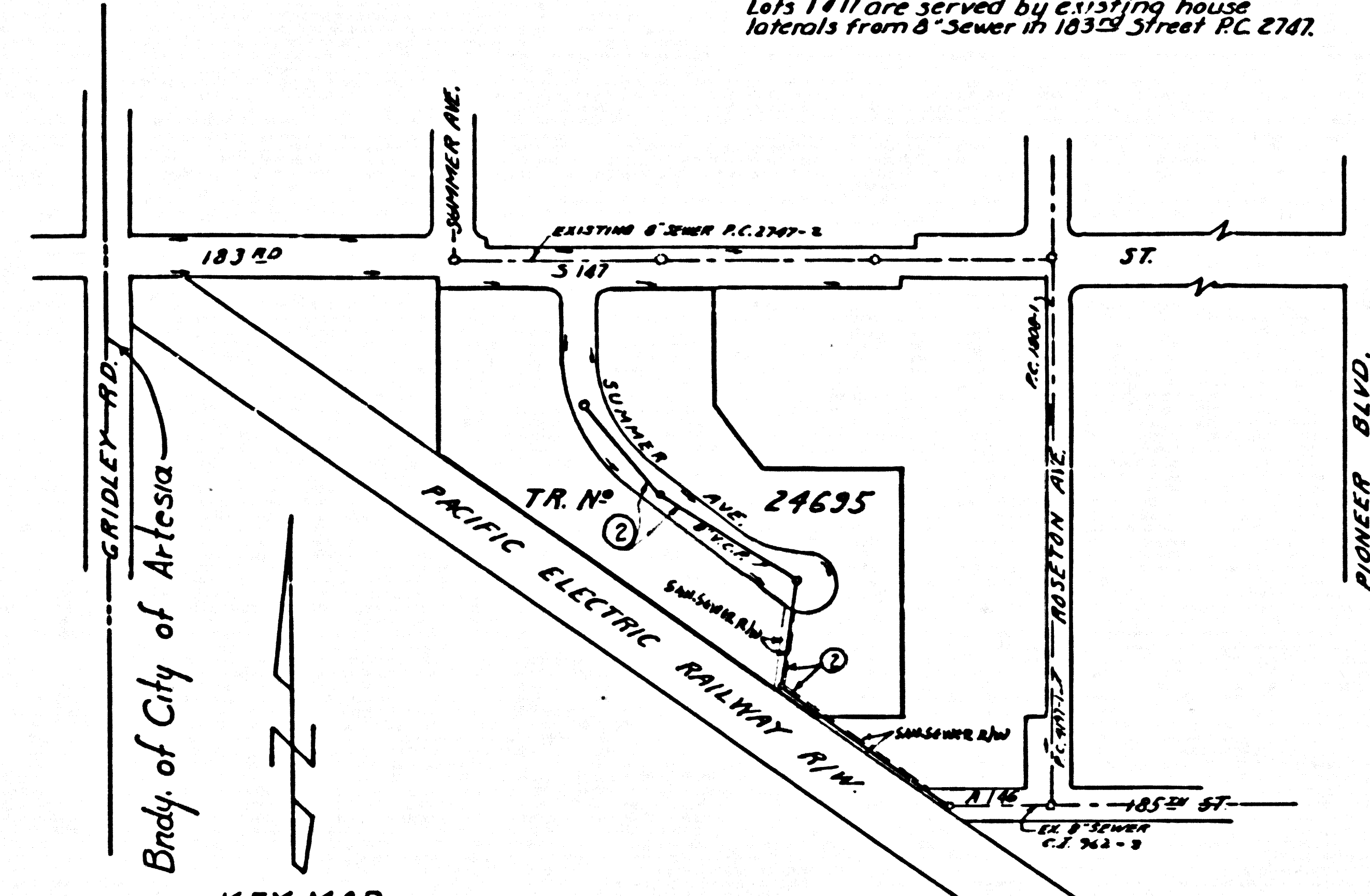


BENCH MARK N° SY 2250 ELEVATION 53.705'
LEAD 4 TACK IN NORTH CURB OF 183RD ST. 1/4 E. OF CURB
RETURN AT THE CORNER OF ROSETON AVE. & 183RD ST.
(ARTESIA QUAD.) 1955 AD.

NO CHARGE
FOR CONNECTIONS
E. Oude 5-2659

NOTE:
Lots 1 & 17 are served by existing house
laterals from 8" sewer in 183rd Street P.C. 2787.

INDEX TABLE	
SHEETS	PAGES
1	2



KEY MAP
SCALE: 1" = 200'
TRACT NO. 24695
P.C. 5151

ARTESIA BLDG. DIST. NO. 408

- NOTE:
PROVIDE STAKES ON THE PROPERTY LINE OR PROPERTY LINES PRODUCED AT RIGHT ANGLES TO THE SEWER LINE AT THE CENTER LINE OF EACH MANHOLE.
NO REPRESENTATIVE OF THE COUNTY ENGINEER WILL SURVEY OR LAYOUT ANY PORTION OF THE WORK.
THE OWNER OR HIS AUTHORIZED REPRESENTATIVE SHALL PROVIDE STAKES FOR THE CITY ENGINEER WITH GRADE SHEETS AND STATION FOR ALL HOUSE LATERALS AND Y BRANCHES AND SHALL PROVIDE STAKES FOR THEM AT THEIR PROPER LOCATIONS WITH STATIONING PLAINLY MARKED. ANY CHANGE IN LOCATION SHALL BE REQUESTED IN WRITING BY THE OWNER OR HIS REPRESENTATIVE.
NO REVISIONS SHALL BE MADE IN THESE PLANS WITHOUT THE APPROVAL OF THE CITY ENGINEER.
- USE STANDARD MANHOLE FRAMES AND COVERS, S-A-117.
 - USE STANDARD STRENGTH PIPES.
 - USE CEMENT MORTAR WEDGE LOCK, OR SPEED-SEAL FOR ALL VITRIFIED CLAY PIPE JOINTS PER SPECS. SEC. 36 & 44.
 - RESURFACE ALL TRENCH WITHIN PAVED AREA TO MEET L. A. COUNTY ROAD DEPT. OR CALIF. STATE HIGHWAY DEPT. REQUIREMENTS IN ACCORDANCE WITH PERMITS.
 - ENCASE FOUR FEET OF SEWER AT POINTS OF INTERFERENCE WITH POLES, S-A-17E-CASE III.
 - HOUSE LATERALS TO BE CONSTRUCTED WITH 1/4" RISE PER FOOT TO PROPERTY LINE.
 - ALL STRUCTURES SHALL BE BRICK SEWER STRUCTURES, S-A-18A.
 - FOR ALLOWABLE LEAKAGE TEST USE FORMULA NO. 1 SPEC. SEC. 54
 - MANHOLE TOPS IN UNIMPROVED RIGHTS-OF-WAY TO BE 6" ABOVE FINISHED GRADE.
 - STANDARD SPECIFICATIONS DATED MAY 15, 1953 APPLY IN THE CONSTRUCTION OF THIS PROJECT.

NOTE:
THE CONTRACTOR SHALL NOTIFY THE CONSTRUCTION AND STORM DRAIN DIVISION BY TELEPHONE, MADISON 9-4747, EX. 362, AT LEAST 24 HOURS BEFORE STARTING ANY WORK UNDER THIS CONTRACT.

PROFILE ALIGNMENT AND GRADE OF P.C. 5151
SANITARY SEWERS PAGE 1
TO BE CONSTRUCTED IN JN035091
TRACT NO. 24695

PRIVATE CONTRACT NO. 5151
JOB NUMBER 035091
W.S. 33

1 SHEETS, 2 PAGES
SCALE: VERT. 1" = 4'
HORIZ. 1" = 40'
MAY, 1959
PREPARED IN THE OFFICES OF

28,128

J. W. Randall
REG. C. E. NO. 3288

FOR LEGEND SEE PLAN NO. S-A-64

NOTE:
GRADES TO WHICH THIS IMPROVEMENT IS TO BE CONSTRUCTED ARE SHOWN ON PLANS AND PROFILE. GRADE POINTS FOR TOP OF CURB, CENTER LINE OF STREETS, OR CENTER LINE OF ALLEYS ARE SHOWN BY CIRCLES ON PROFILES. AT ALL POINTS BETWEEN DESIGNATED POINTS THE GRADE SHALL BE ESTABLISHED SO AS TO CONFORM TO A STRAIGHT LINE DRAWN BETWEEN SAID DESIGNATED POINTS.
ELEVATIONS ARE IN FEET ABOVE U.S. C&G.S. SEA LEVEL DATUM OF 1929.
THIS DRAWING AND THE DATA HEREON ARE HEREBY MADE A PART OF THE SPECIFICATIONS.
WORK SHALL BE CONSTRUCTED ACCORDING TO SPECIFICATIONS ON FILE IN THE OFFICE OF THE CITY ENGINEER AND SHALL BE PROSECUTED ONLY IN THE PRESENCE OF THE CITY ENGINEER.
BEFORE WORK CAN BE STARTED, THE CONTRACTOR MUST OBTAIN A PERMIT TO RELOCATE IN CITY STREETS FROM THE L. A. COUNTY ROAD DEPT., DIST. NO. 8, AND MAKE A REPORT WITH THE CITY OF ARTESIA SUPERVISOR TO COVER THE COST OF CONSTRUCTION INSPECTION AND RECORD PLANS.
APPROVAL OF THIS PLAN BY THE CITY OF ARTESIA DOES NOT CONSTITUTE A REPRESENTATION AS TO THE ACCURACY OF THE LOCATION OF OR THE EXISTENCE OR NON-EXISTENCE OF ANY UNDERGROUND UTILITY PIPE, OR STRUCTURE WITHIN THE LIMITS OF THE PROJECT. THE NOTE APPLIES TO ALL PAGES.
IF WORK IS TO BE DONE IN A STATE HIGHWAY, A PERMIT MUST BE OBTAINED FROM THE STATE OF CALIFORNIA, DIVISION OF HIGHWAYS, 120 SOUTH SPRING STREET.

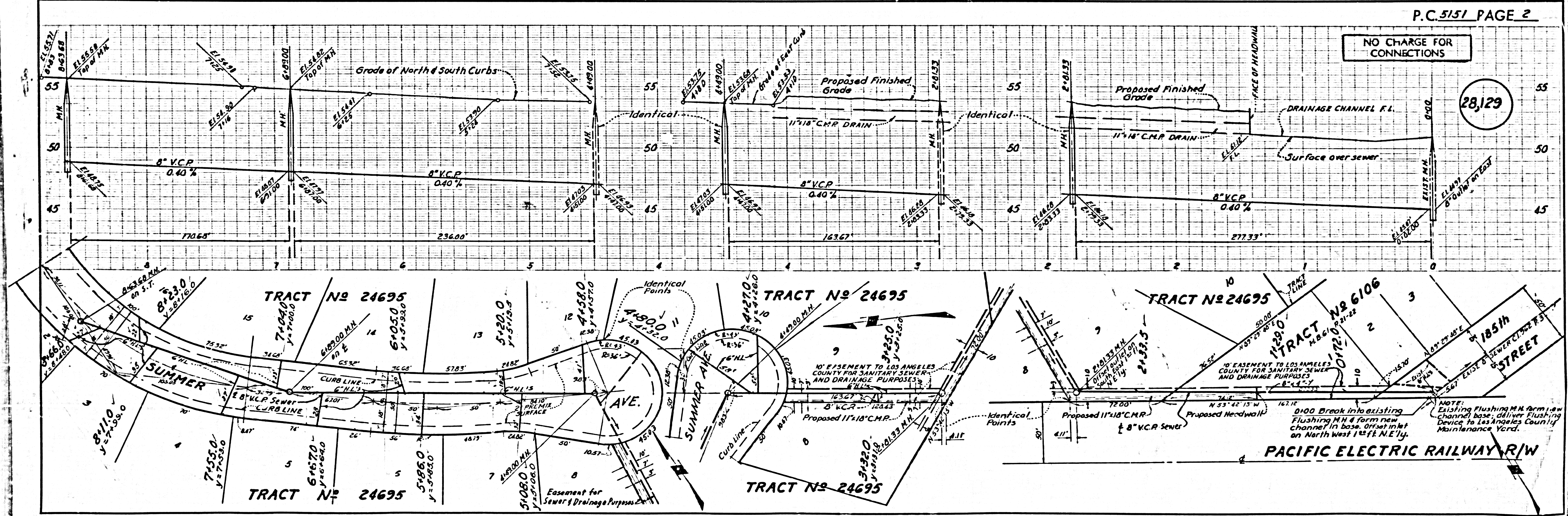
CITY OF ARTESIA, CALIFORNIA

APPROVED, JOHN A. LAMME, CITY ENGINEER
APPROVED, *J. W. Randall*, CHIEF ENGINEER
CO. SAN. DIST. NO. 12
BY *J. W. Randall* OFFICE ENGINEER
CHECKED BY *E. Oude 5-2659*
OFFICE OF CITY ENGINEER, REG. C. E. NO. 3466

SUBMITTED BY: *John L. Esten 5-26-59*
LOS CERRILLOS REGIONAL ENGINEER, R.C.E. No. 3871

NO CHARGE FOR CONNECTIONS

28,129



NOTE:
0100 Break into existing Flushing M.H. & form new channel in base. Direct inlet on North West 183rd St. to Maintenance Yard.

PACIFIC ELECTRIC RAILWAY R/W