

B.M. S.Y. 4402 El. 1201.398 L.A. Co. Sur. Map Mid. B.M. 507 1988
 RE. 5869 in 12" Conc. Post above Ground @ N.E. Cor. Crest Rd.
 6' Crenshaw Blvd. 92.5' Ely from ctr. of PmY 6' 30" N 7/4 from ctr. of PmY
 55.3' E. of P.P. 1036438 E., under guy wire Base Line - 1255'

INDEX MAP
 TRACT No. 24872
 P.G. 813 Scale 1" = 200'

LOMITA BLDG. DIST. NO. 7/1

- NOTES
1. PROVIDE STAKES ON THE PROPERTY LINE OR PROPERTY LINES PRODUCED AT RIGHT ANGLES TO THE SEW. LINE AT THE CENTER LINE OF EACH MANHOLE.
 2. NO REPRESENTATIVE OF THE COUNTY ENGINEER WILL SLAVEY OR LAY OFF ANY PORTION OF THE WORK.
 3. THE OWNER OR HIS AUTHORIZED REPRESENTATIVE SHALL FURNISH THE COUNTY ENGINEER WITH GRAD SHEETS AND STATIONING FOR ALL HOUSE LATERALS AND T BRANCHES AND SHALL PROVIDE STAKES FOR THEM AT THEIR PROPER LOCATIONS WITH STATIONING PLAINLY MARKED. ANY "LAMP" IN ISOLATION SHALL BE REQUESTED IN WRITING BY THE OWNER OR HIS REPRESENTATIVE.
 4. THE PRIVATE ENGINEER SHALL FURNISH THE HOUSE LATERAL DEPTH AT THE PROPERTY LINE BELOW THE TOP OF CURB ELEVATION FOR EACH HOUSE LATERAL ON THE GRADE SHEET.
 5. NO REVISIONS SHALL BE MADE IN THESE PLANS WITHOUT THE APPROVAL OF THE COUNTY ENGINEER.
 6. USE STANDARD MANHOLE FRAMES AND COVERS, 5-117, EXCEPT AS NOTED.
 7. USE STANDARD STRUCTURES PER EXCEPT AS NOTED.
 8. USE CEMENT MORTAR OR "WEDGE JOINT" OR "SPIDER SEAM" FOR ALL V.C.P. JOINTS PER SPECS., SECS. 30 & 31.
 9. RESURFACE JAIL TRENCH WITHIN PAVED AREA TO MEET L.A. COUNTY ROAD DEPT. OR CALIF. STATE HIGHWAY REQUIREMENTS IN ACCORDANCE WITH PERMITS.
 10. ENCASE FOUR FEET OF SEWER AT POINTS OF INTERFERENCE WITH POLES, CASE III, 5-117.
 11. HOUSE LATERALS TO BE CONSTRUCTED WITH INVERTS AT PROPERTY LINE @ FEET BELOW CURB GRADE EXCEPT AS NOTED.
 12. ALL STRUCTURES SHALL BE BRICK SEWER STRUCTURES, C-104, EXCEPT AS NOTED.
 13. FOR ALLOWABLE LEAKAGE TEST USE FORMULA NO. 1, SPECS., SEC. 54.
 14. MANHOLE POPS IN UNIMPROVED RIGHTS-OF-WAY TO BE INCHES ABOVE FINISHED GRADE.
 15. THE CONTRACTOR SHALL NOTIFY THE COA SECTION 8 FROM BRAN DIVISION BY TELEPHONE, MARSHEN 9-212, EXT. 362, AT LEAST TWENTY-FOUR HOURS BEFORE STARTING ANY WORK UNDER THIS CONTRACT.
 16. STANDARD SPECIFICATIONS DATED MAY 15, 1959 APPLY TO THE CONSTRUCTION OF THIS PROJECT.

ISSUE NO PERMITS UNTIL P.C. 4787 IS CONSTRUCTED.

NO CHARGE FOR CONNECTIONS
 W. T. Merrill 6-18-53

Revisions:
 1. Lowered curb grades in Crestwind Dr.
 2. Lowered & changed location of sewer in Crestwind Dr.
 Approved: *Colt P. ...*
 Office of County Engineer R-12-532

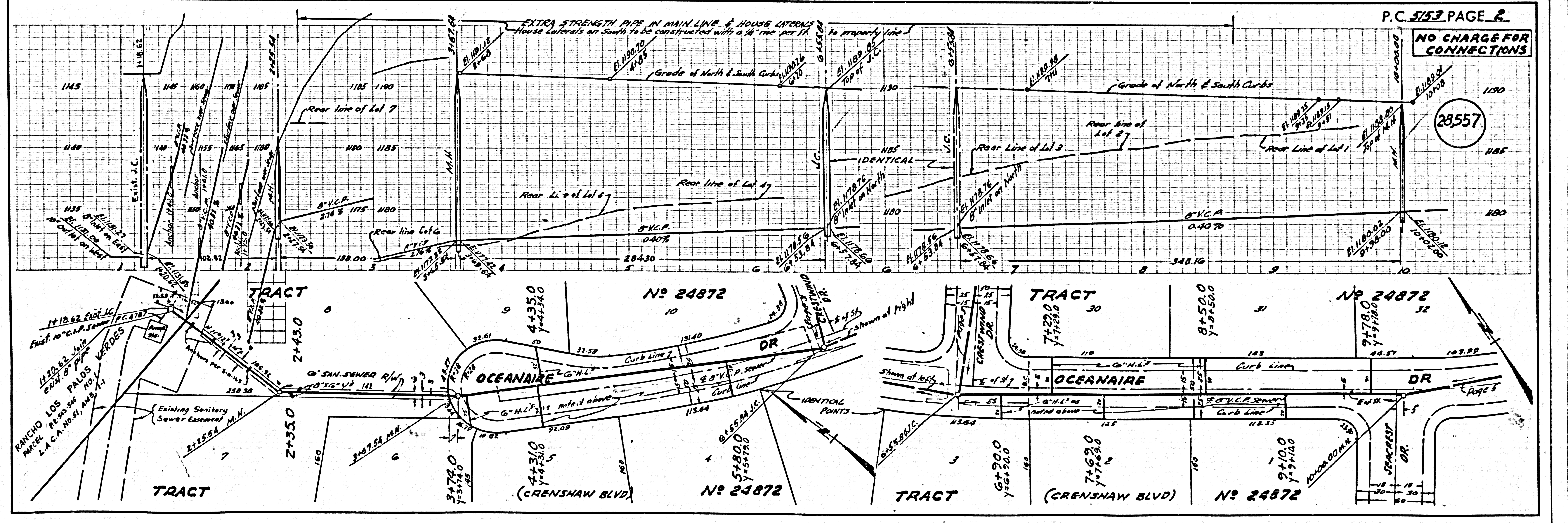
TO BE CONSTRUCTED IN
TRACT No. 24872 (28,556)

PRIVATE CONTRACT NO. 5153
 W.S. 27
3 SHEETS, 3 PAGES
 SCALE: HORIZ. 1" = 40' VERT. 1" = 4'
APRIL, 1959
 PREPARED IN THE OFFICES OF

By: *Clayton Wagner*
 REG. C. E. NO. 18878
 FOR LEGEND SEE PLAN NO. 5-A-64

NOTES
 GRADES TO WHICH THIS IMPROVEMENT IS TO BE CONSTRUCTED ARE SHOWN ON PLANS AND PROFILES. GRADE POINTS FOR TOP OF CURB, CENTER LINE OF SIDEWALK, OR CENTER LINE OF ALLEYS ARE SHOWN BY CIRCLES ON PROPERTY AT ALL POINTS BETWEEN DESIGNATED POINTS. THE GRADE SHALL BE ESTABLISHED SO AS TO CONFORM TO A SEWAGE LINE BEING BETWEEN SAID DESIGNATED POINTS.
 ELEVATIONS ARE IN FEET ABOVE U.S.C. & G.S. SEA LEVEL DATUM OF 1929.
 THIS DRAWING AND THE DATA HEREON ARE HEREBY MADE A PART OF THE SPECIFICATIONS.
 WORK SHALL BE CONSTRUCTED ACCORDING TO SPECIFICATIONS ON FILE IN THE OFFICE OF THE COUNTY ENGINEER AND SHALL BE PROSECUTED ONLY IN THE PRESENCE OF THE COUNTY ENGINEER.
 BEFORE WORK CAN BE STARTED, THE CONTRACTOR MUST OBTAIN A PERMIT TO EXCAVATE IN COUNTY STREETS FROM THE COUNTY ROAD DEPT., DISTRICT OFFICE NO. 7, AND MAKE A DEPOSIT WITH THE COUNTY ENGINEER, ROOM 324 PAN AMERICAN BUILDING, 330 SO. BROADWAY, SUFFICIENT TO COVER THE COST OF CONSTRUCTION INSPECTION AND RECORD PLANS.
 APPROVAL OF THIS PLAN BY THE COUNTY OF LOS ANGELES DOES NOT CONSTITUTE A REPRESENTATION AS TO THE ACCURACY OF THE LOCATION OF OR THE EXISTENCE OR NON-EXISTENCE OF ANY UNDERGROUND UTILITY PIPE, OR STRUCTURE WITHIN THE LIMITS OF THIS PROJECT. THE NOTES APPLY TO ALL PAGES.
 IF WORK IS TO BE DONE IN A STATE HIGHWAY, A PERMIT MUST BE OBTAINED FROM THE STATE OF CALIFORNIA, DIVISION OF HIGHWAYS, 120 SOUTH SPRING STREET.

COUNTY OF LOS ANGELES, CALIFORNIA
 APPROVED, JOHN A. LAMBE, COUNTY ENGINEER
 APPROVED, C.B. GONTER, CHIEF ENGINEER
 BY: *J. H. Hughes* (SANTA MONTE ENGINEER)
 BY: *W. T. Merrill* (OFFICE ENGINEER)
 CHECKED BY: *W. T. Merrill*
 OFFICE OF COUNTY ENGINEER, REG. C. E. NO. 9626

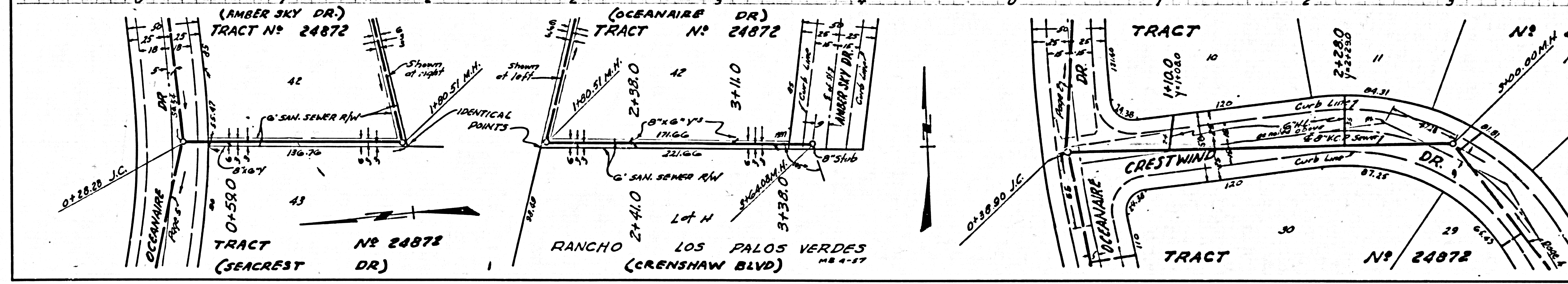
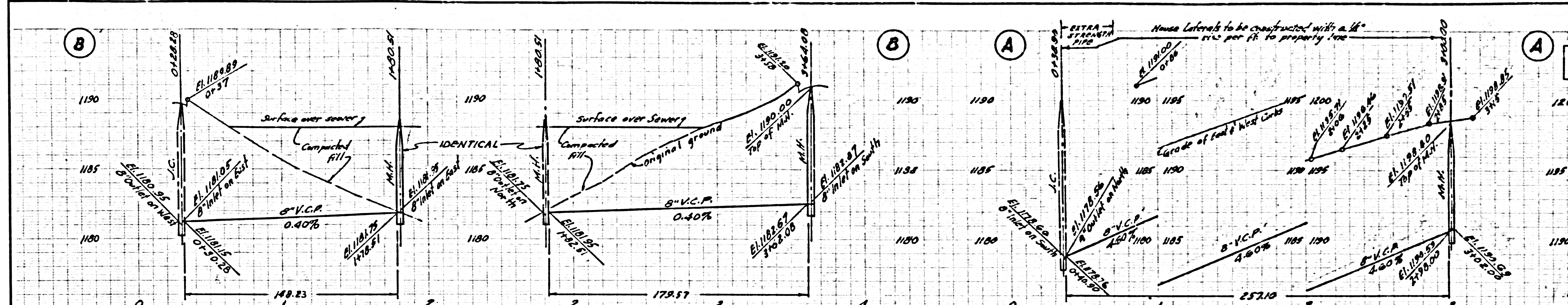


NO CHARGE FOR CONNECTIONS

(28,557)

NO CHARGE FOR CONNECTIONS

28,559



NO CHARGE FOR CONNECTIONS

28,559

