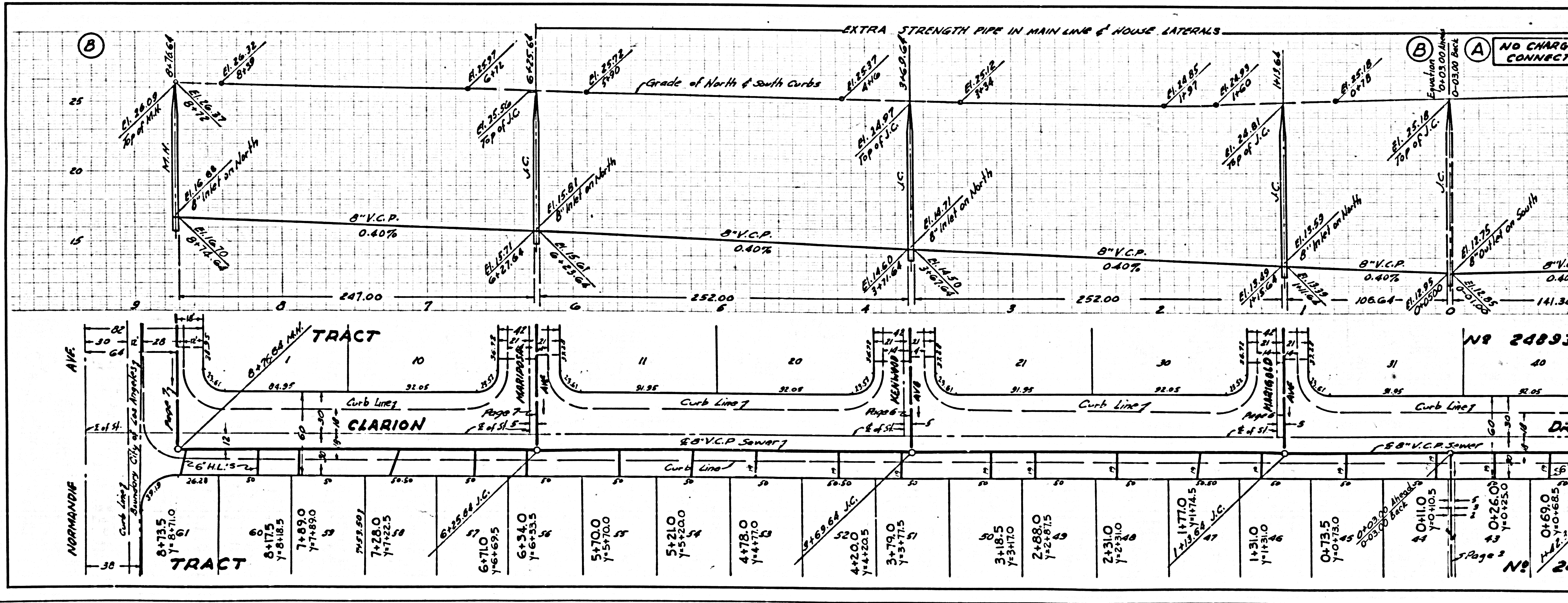


NO CHARGE FOR CONNECTIONS

28,345

No 24894

No 24894



NO CHARGE FOR CONNECTIONS

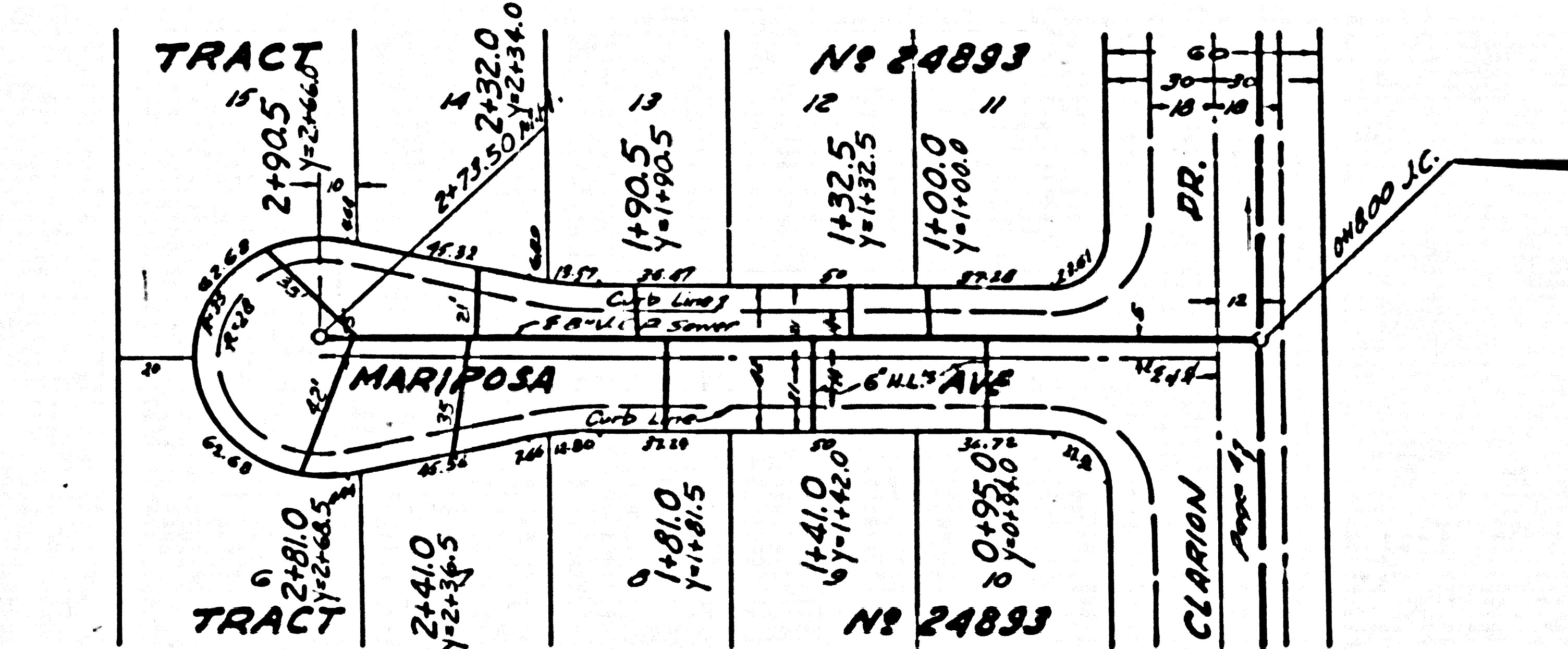
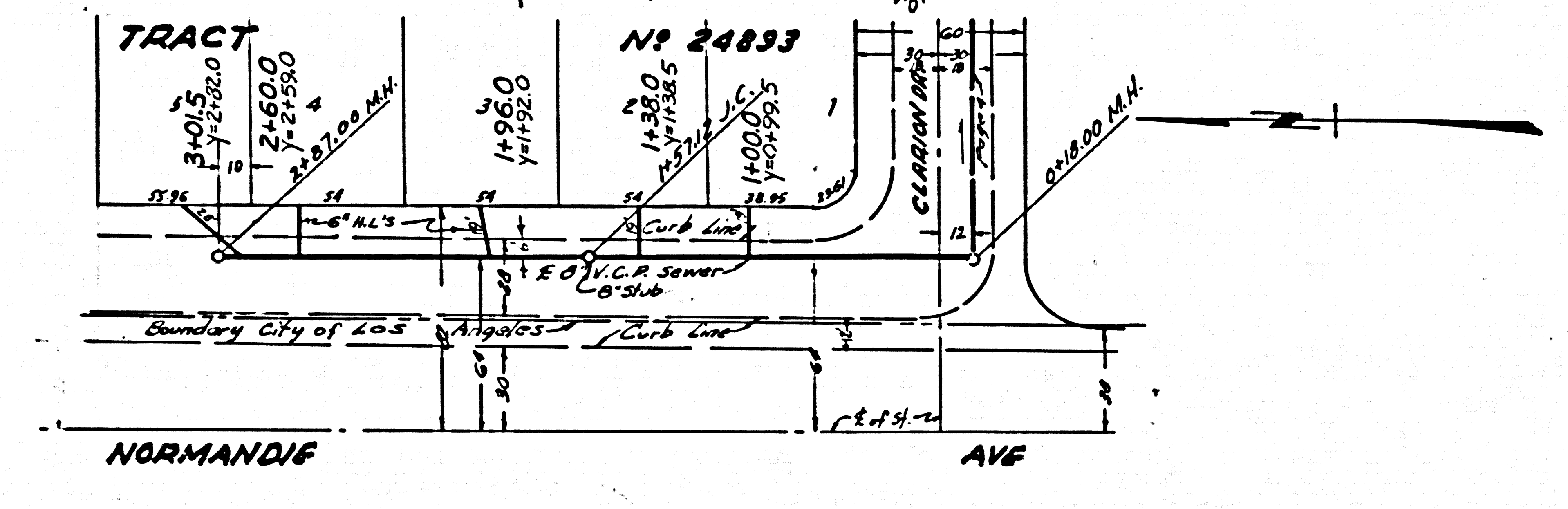
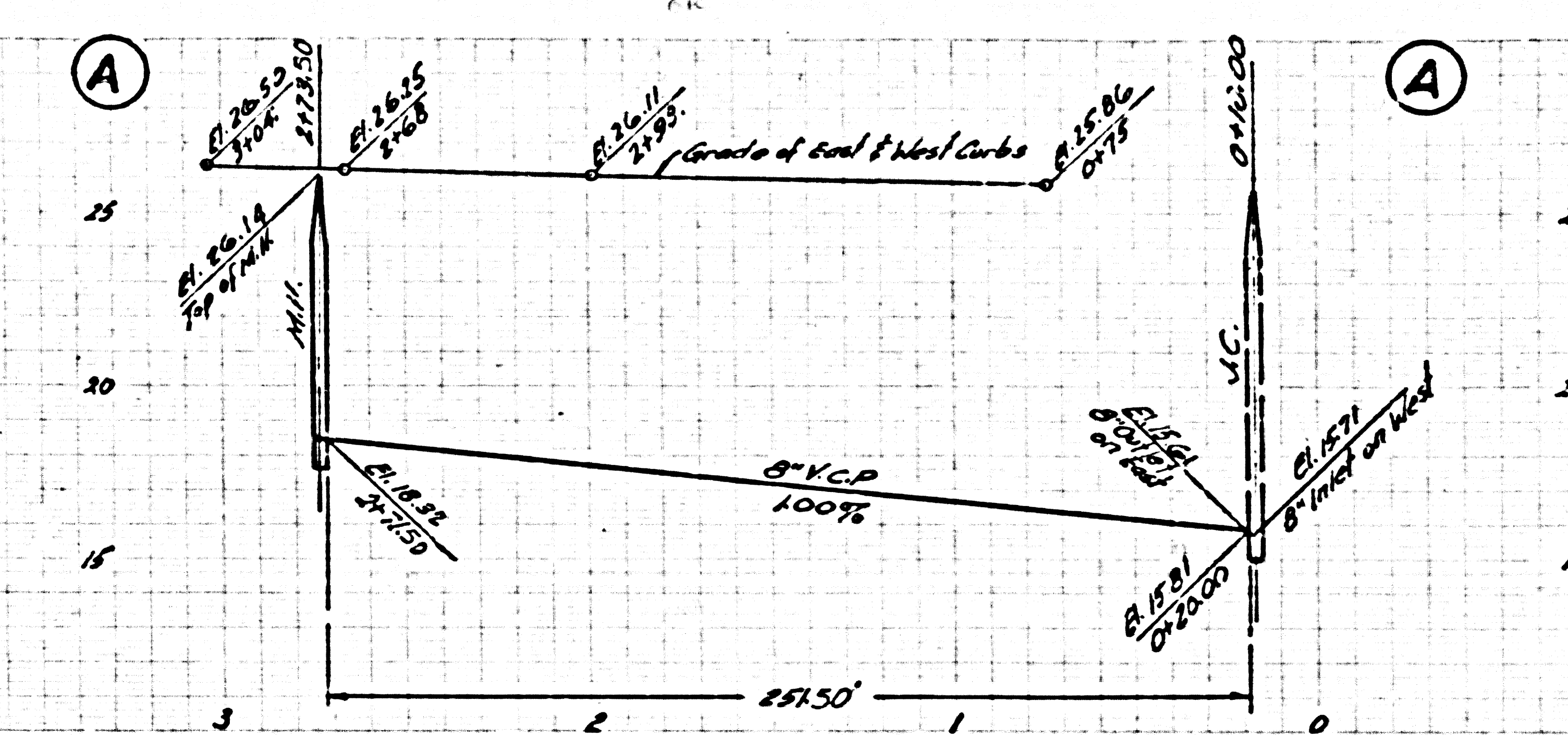
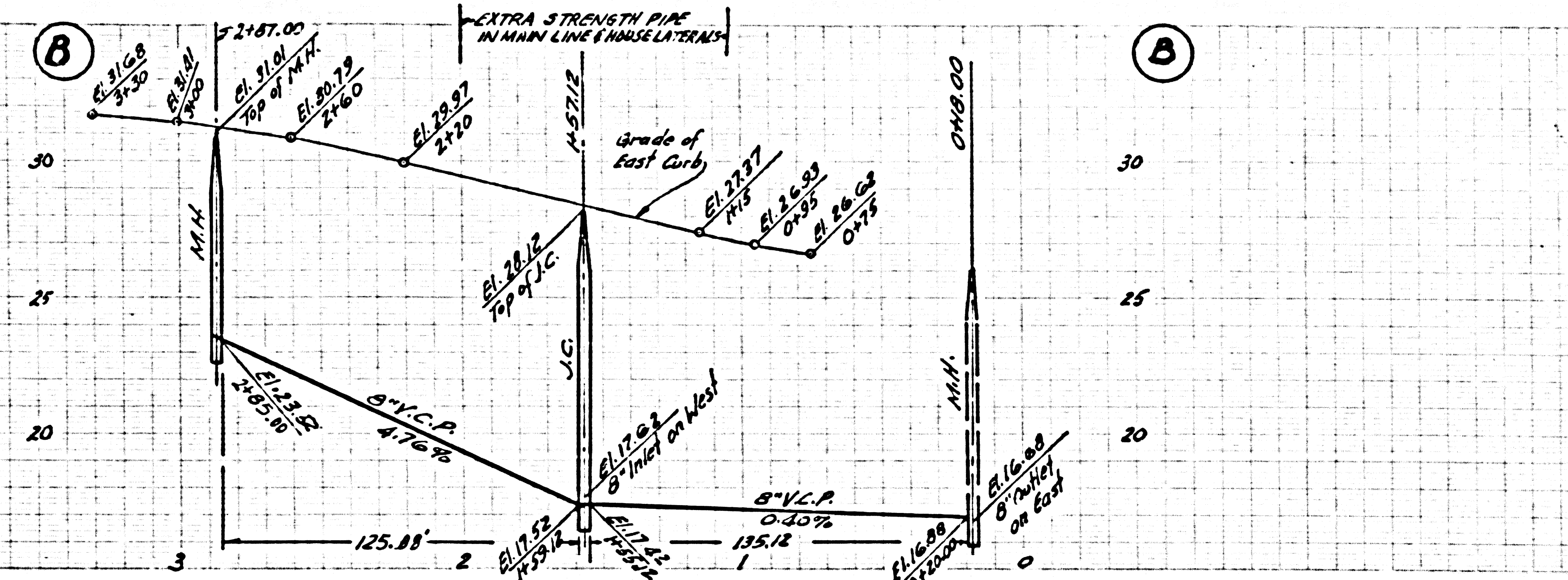
28,346

No 24893

No 24893

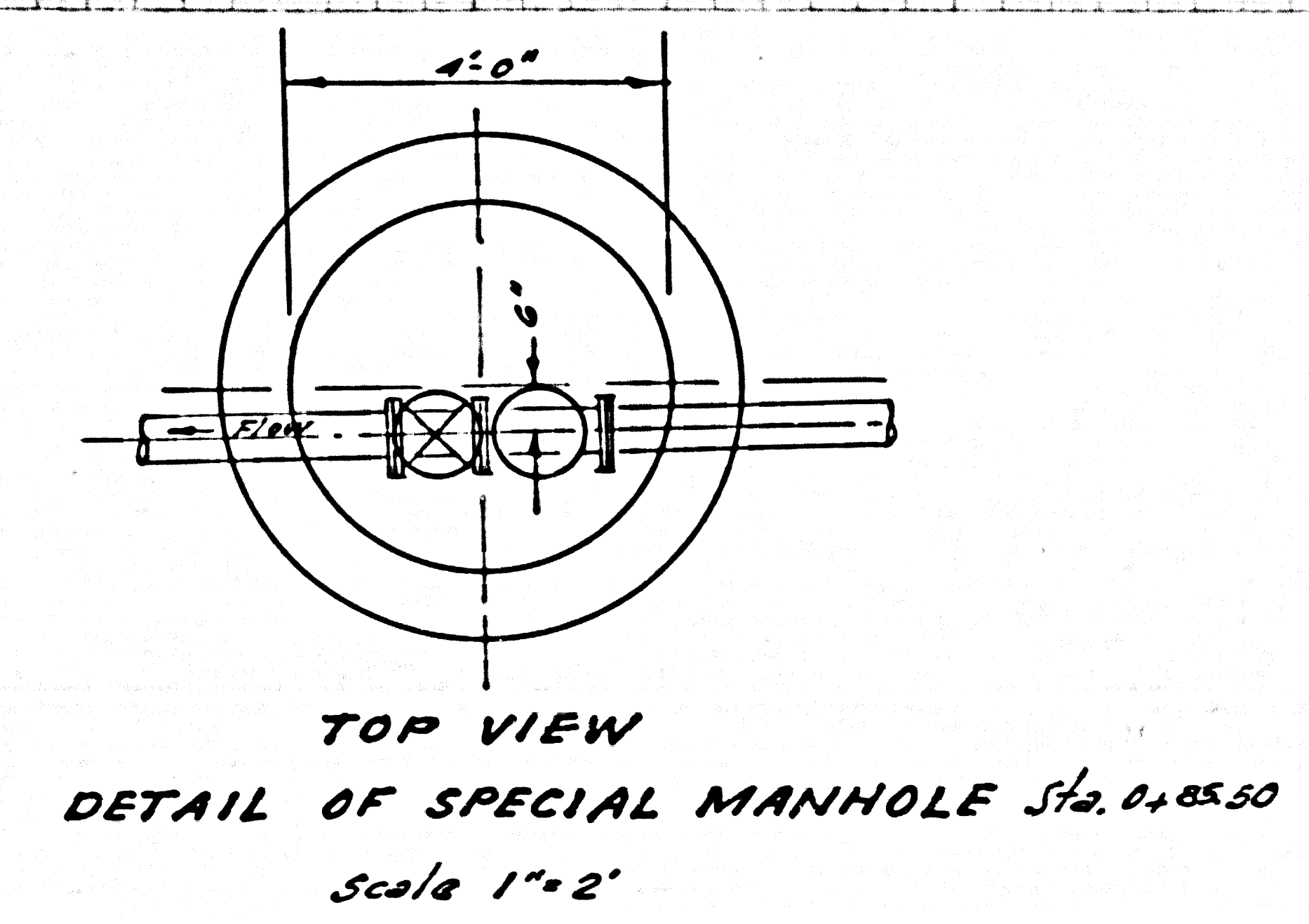
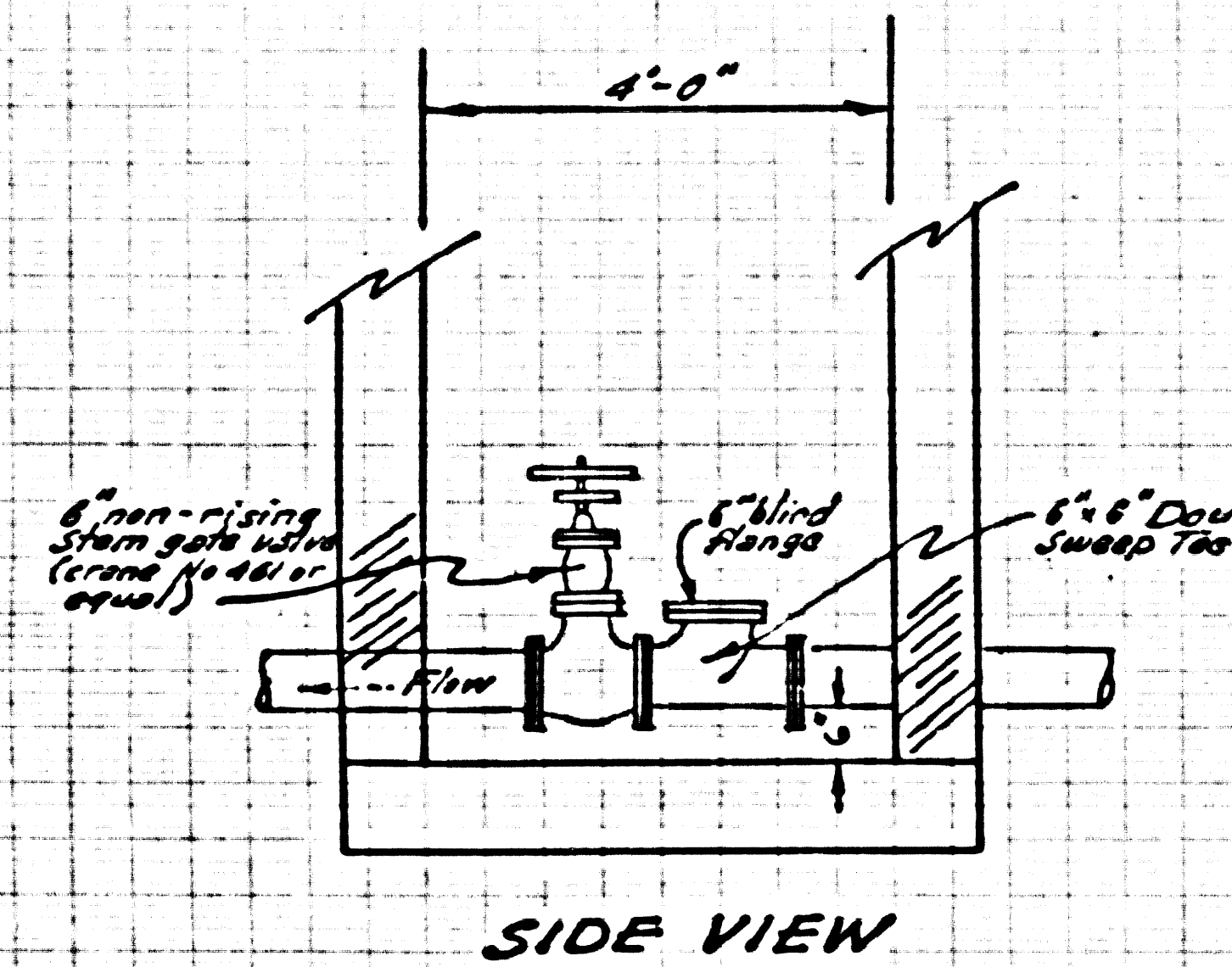
NO CHARGE FOR CONNECTIONS

28,349

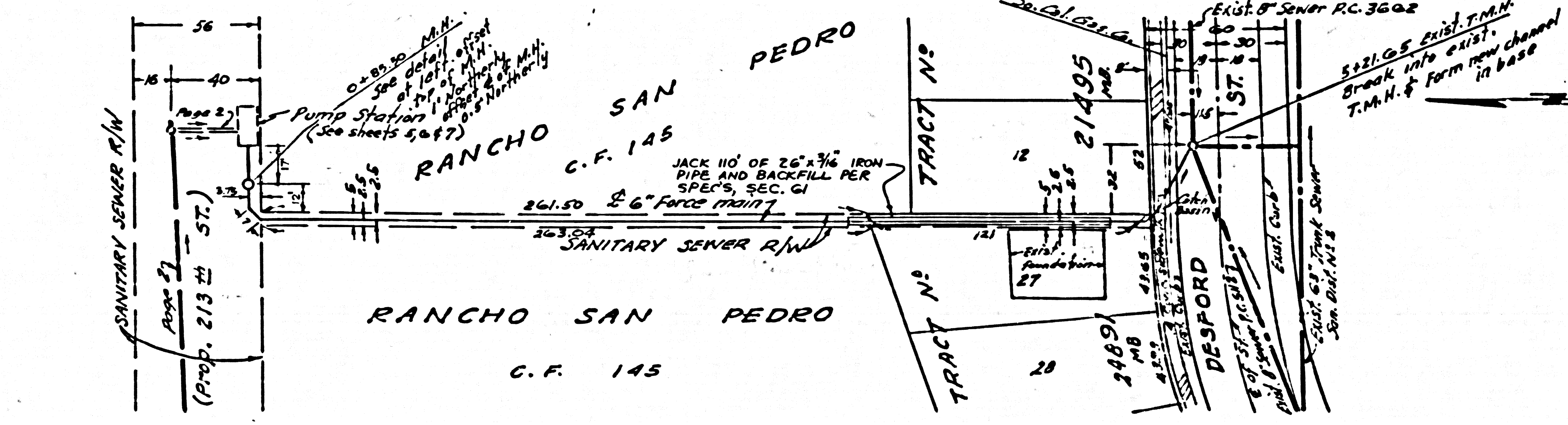
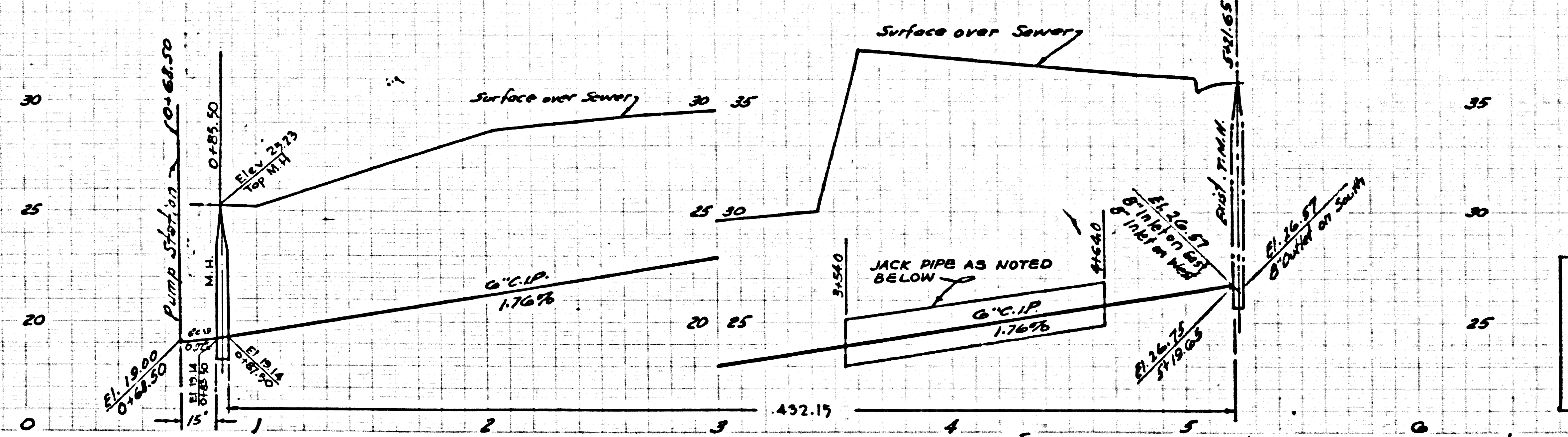


ISSUE NO PERMITS

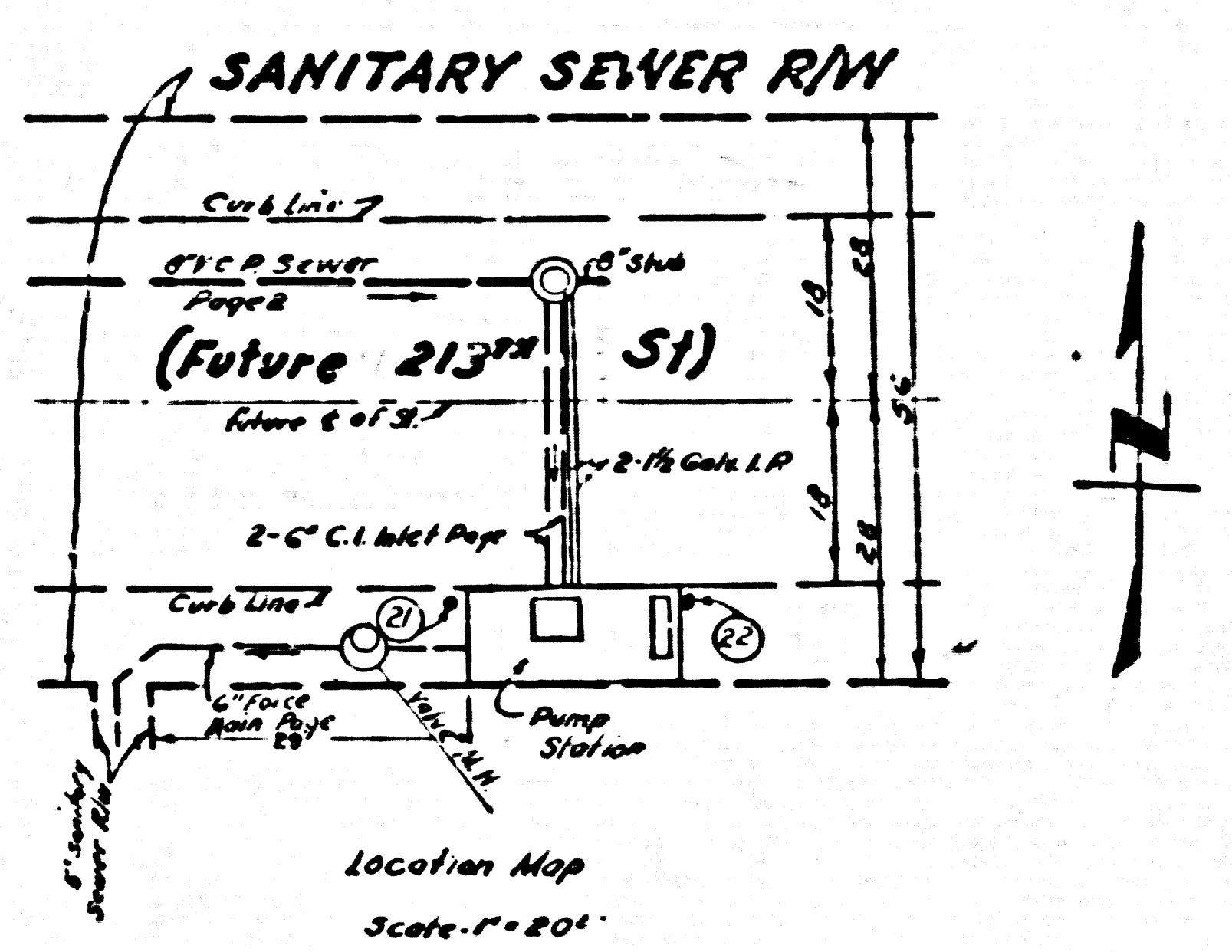
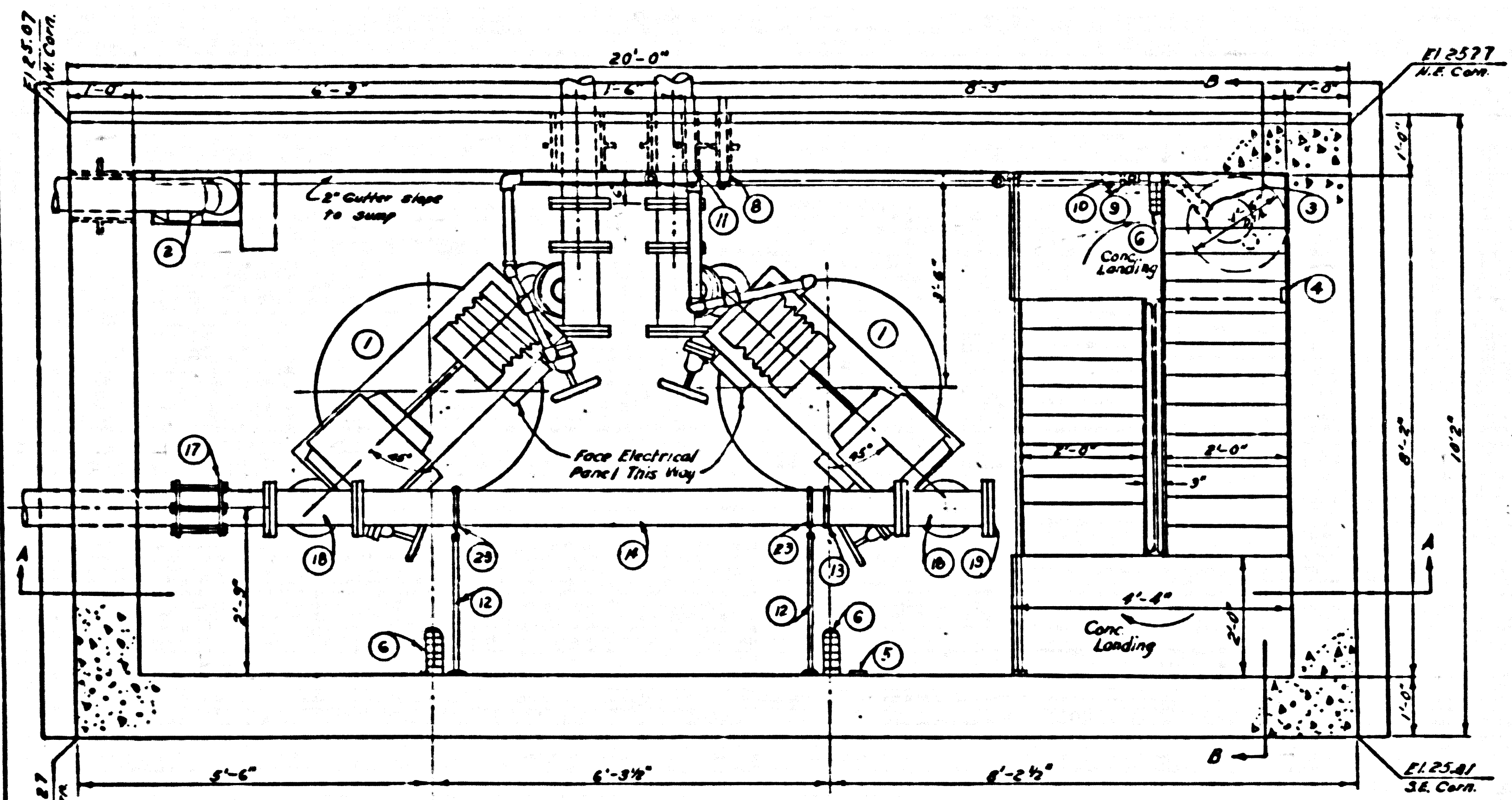
28,350



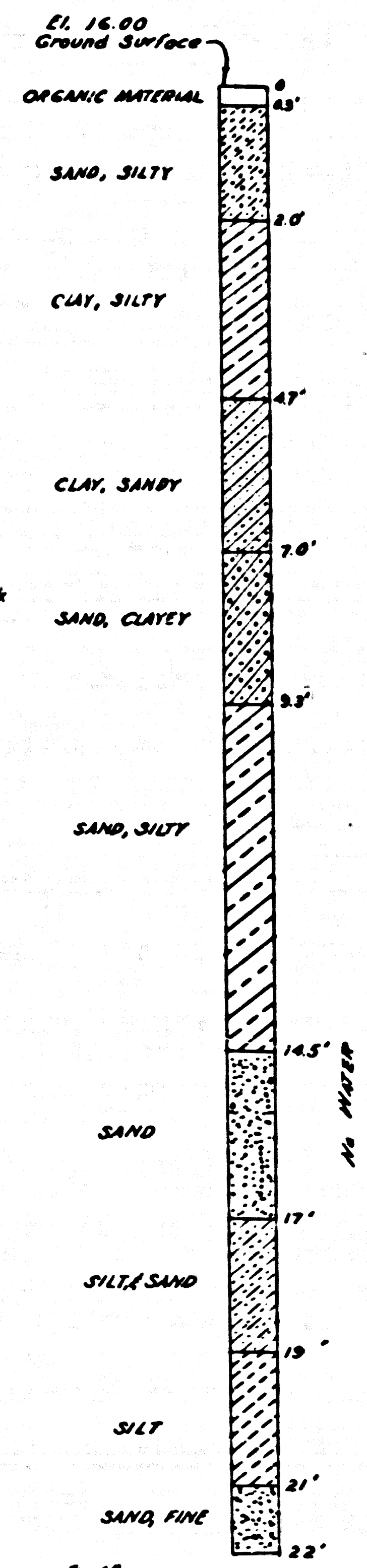
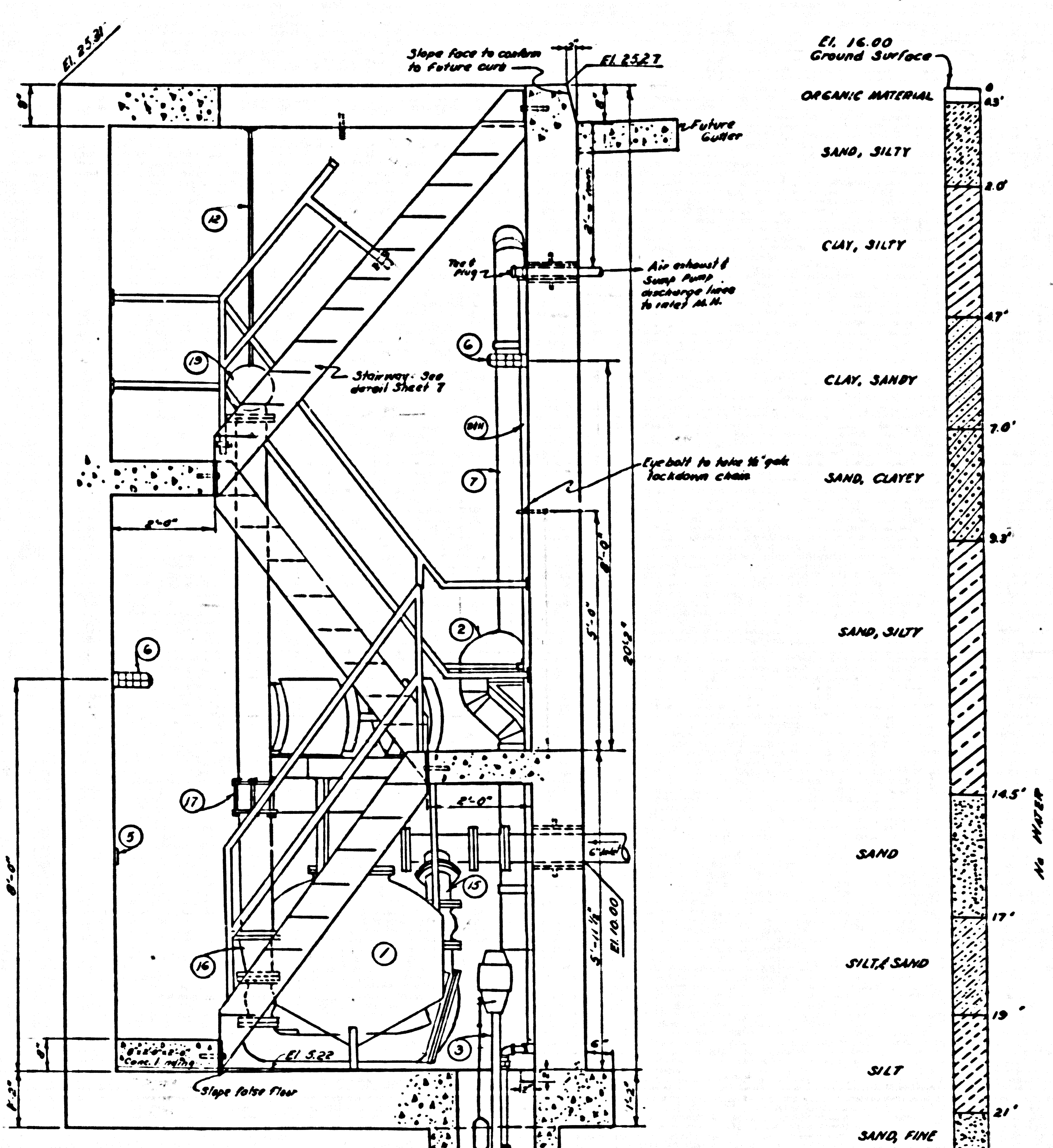
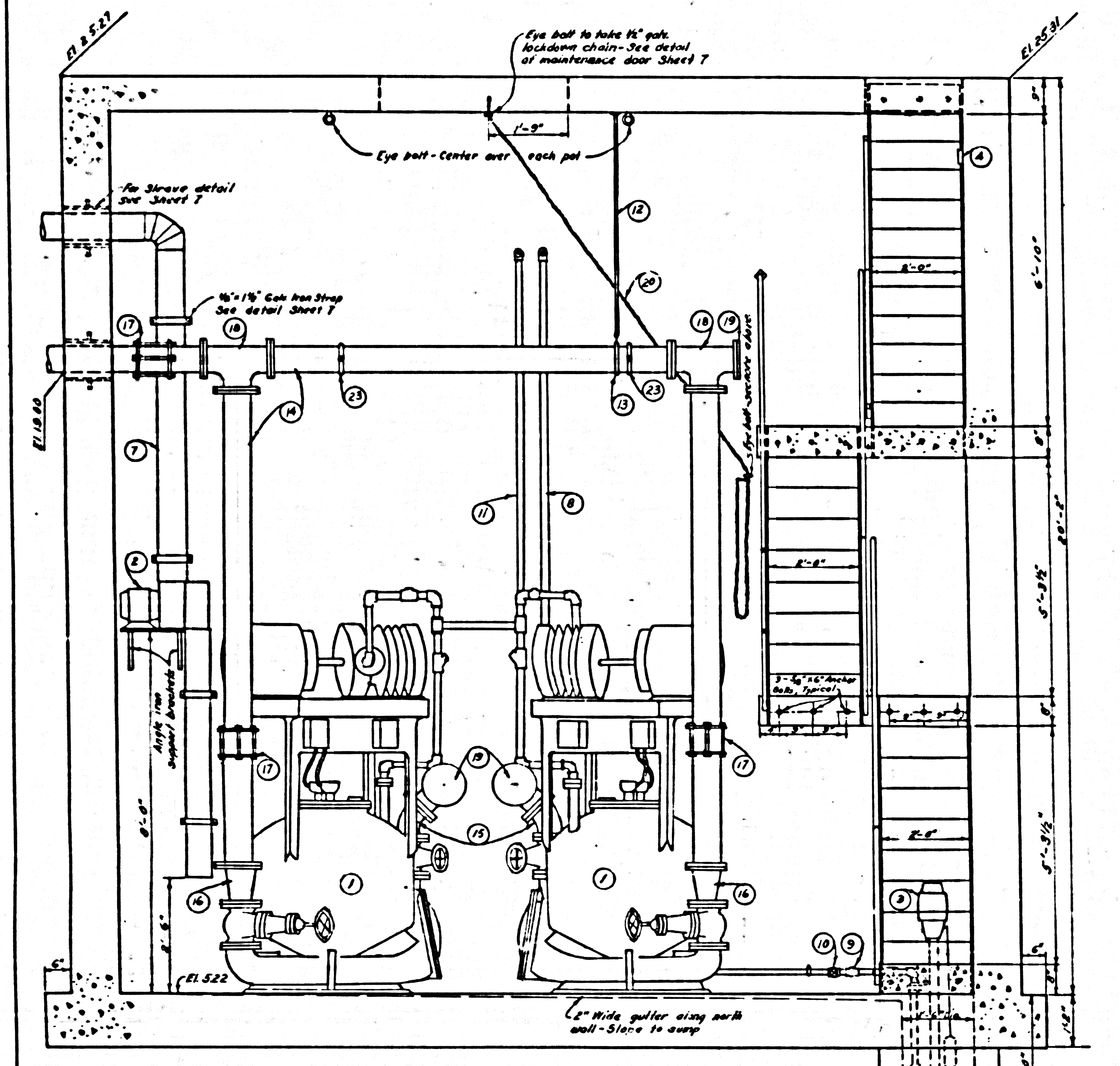
TOP VIEW
DETAIL OF SPECIAL MANHOLE Sta. 0+85.50
Scale 1"=2'



REVISION
Move special manhole B westerly to station 0+85.50
Approved: *[Signature]*
Office of County Engineer, C.E. No. 11636



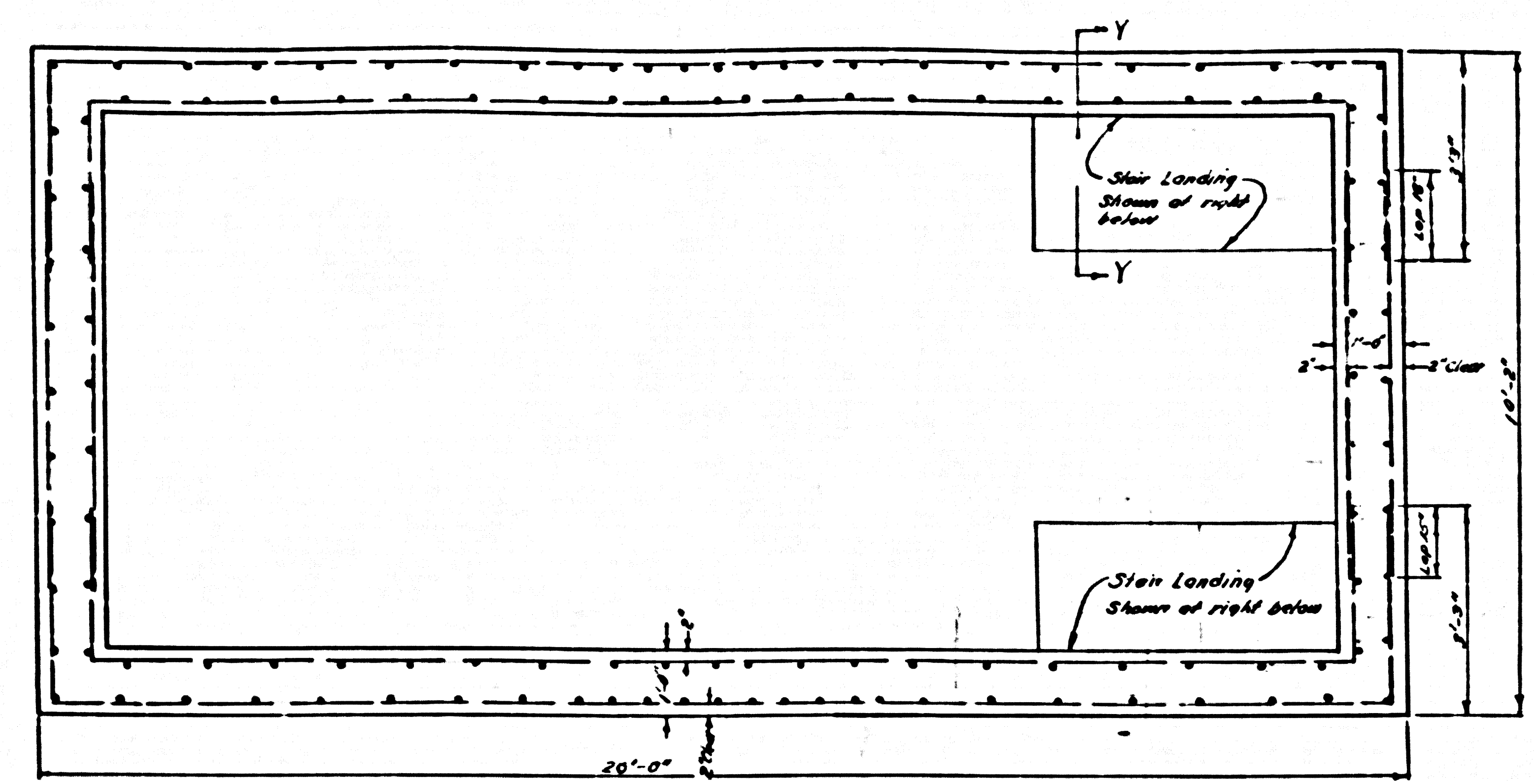
ITEM	QUANTITY	DESCRIPTION
1	2	Show Pneumatic Ejector Package Type (ISO Coll.) Complete with receiver, valves and automatic control, or as indicated.
2	1	Buffalo Forge Co. Blower, Size C, 1/2 H.P. Explosion-proof, 110V, 60 cycle, or equal.
3	1	Transfer Pump, 1/2 H.P., 1750 R.P.M., 100, 60 cycle, 1/2", Explosion-proof, or equal.
4	1	Switch for lights & blower (explosion-proof)
5	1	Crowne-Hinds Arrestor Plug & Co. - Model 1227 - Cast Iron Cover, or equal.
6	3	Crowne-Hinds Repair-light fixture, ARB-43, Type 210, 200W, or equal.
7	17' 10 1/2"	6" Transition Pipe
8	6' 4 1/2"	1 1/2" Cor. Tee Pipe from floor drain to inlet M.H. & fittings.
9	1	1 1/2" Check Valve, Spring, Brass.
10	1	1 1/2" Gate Valve, Brass.
11	43' 10 1/2"	1 1/2" Galv. Iron Exhaust Pipe & fittings (from ejectors to inlet M.H.)
12	3 (M.H.)	3/4" Air swing hanger straps - Crowe No. 155 G or equal - Bolt to concrete.
13	1 (M.H.)	3/4" Galv. Splicing & Socket - Crowe No. 107, R G, or equal.
14	35' 10 1/2"	3" Class 125 Cast Iron Pipe in Station (Flanged)
15	2	3" Cast Iron Class 125 45° El.
16	2	6" 1/2" Cast Iron Reducers - Class 125
17	3	6" Dresser Couplings, or equal.
18	1	6" Class 125 Double Street Tee - Class 125
19	3	6" Blind Flange
20	40' 10 1/2"	1/2" Galv. Chain - Shop fastener each end (anchored for maintenance)
21	25' 10 1/2"	6" Crossed Wooder Pile
22	1	3/4" Special Brass Diamond Street washer with concealed keys - Alabama Foundry Co. Part No. 2-192 A - Wash with lockwash bolts, or approved equal.
23	2 (M.H.)	Pipe clamp - Crowe No. 212 - G, or equal.



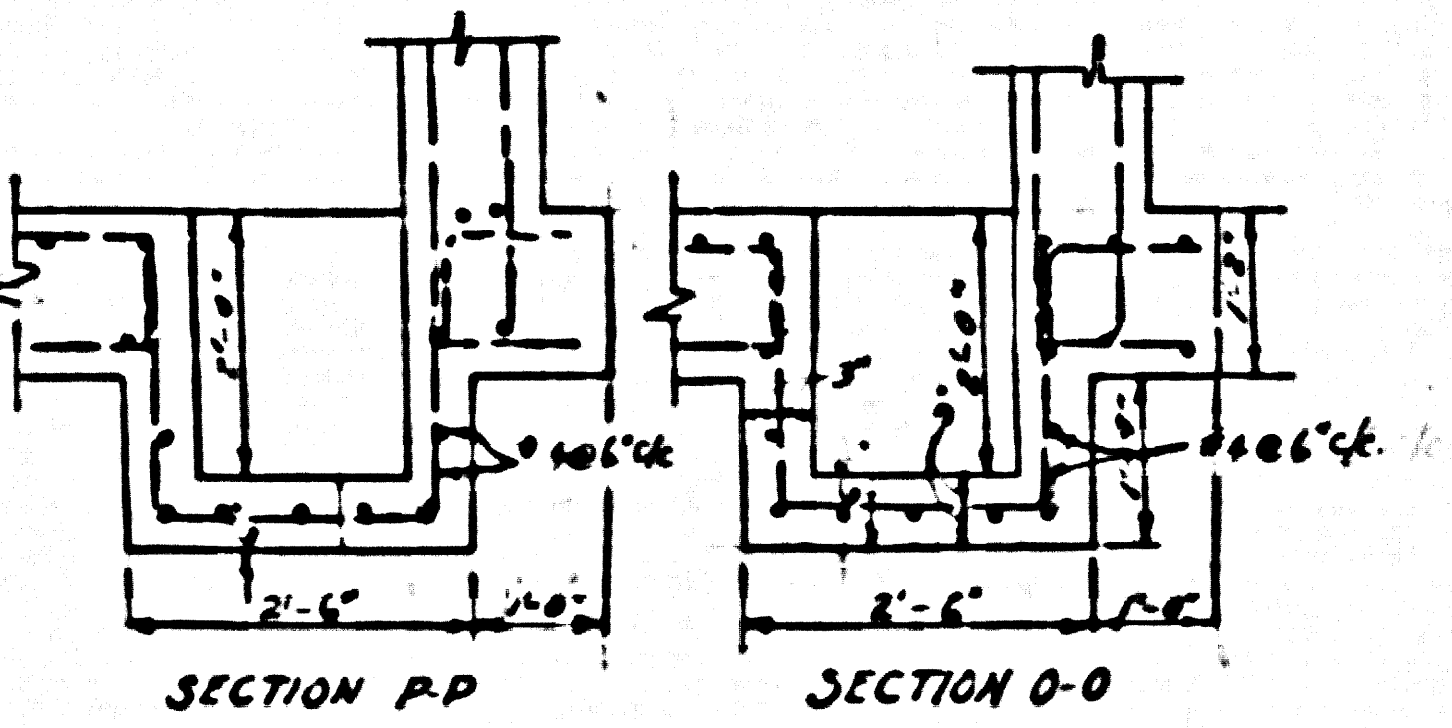
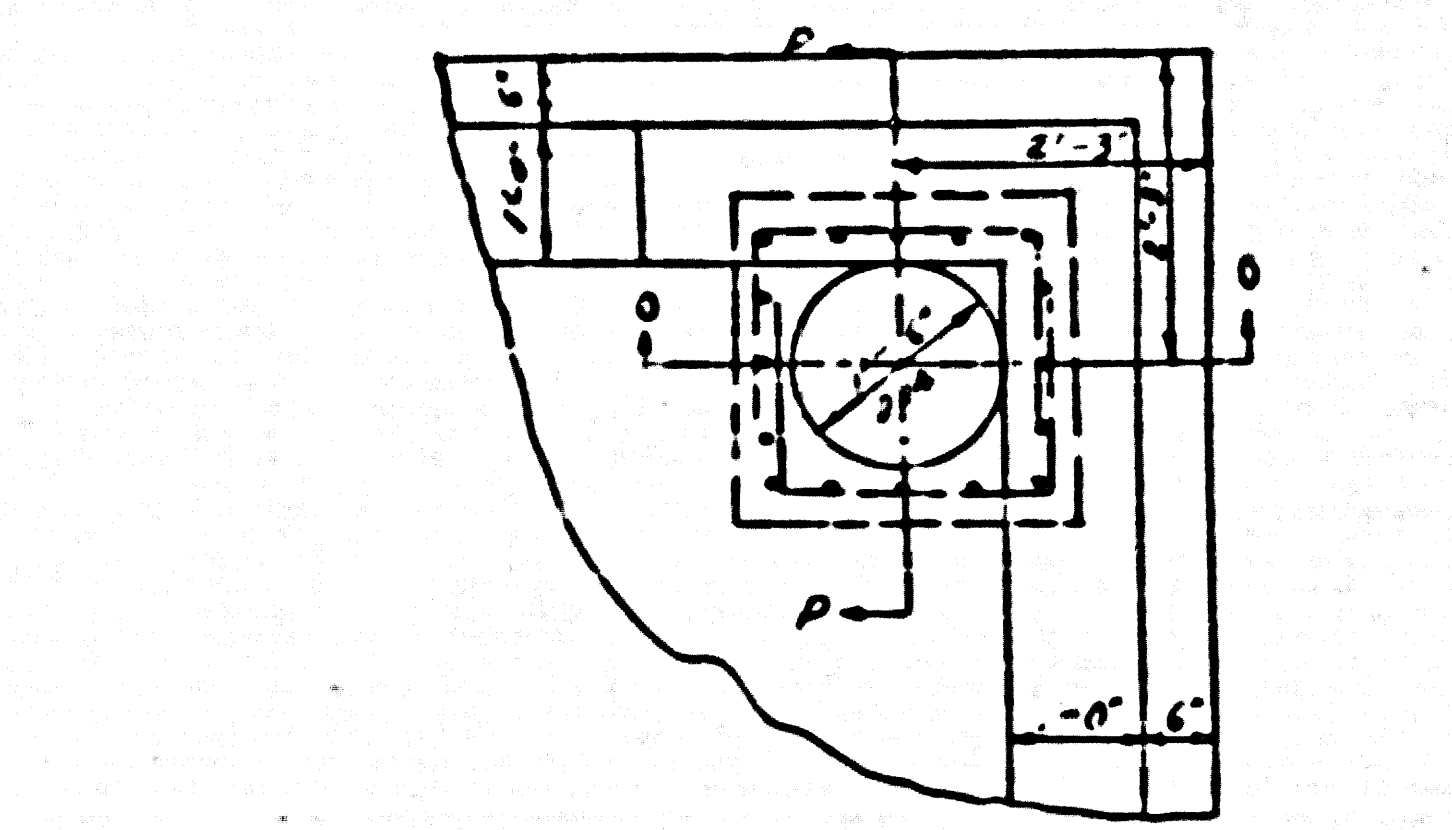
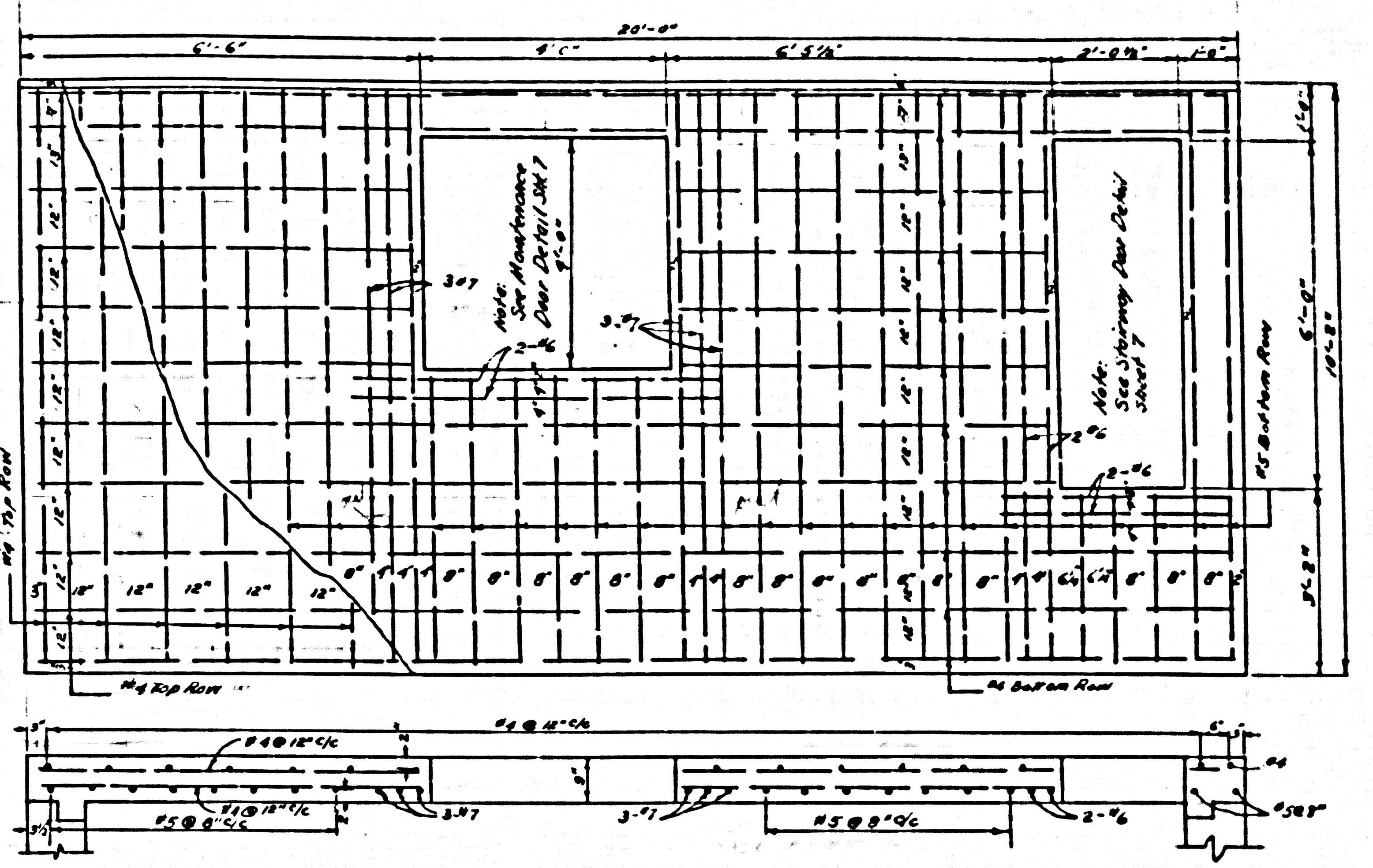
- GENERAL NOTES**
- Ultimate strength of concrete (28 days) 3000 P.S.I. min.
 - Use intermediate grade reinforcing bars (20,000 P.S.I.)
 - All cast iron pipe within station to be Class 125 (M.H.)
 - The contractor shall contact the San Coll. Edison Co. for power service.
 - The contractor shall contact the Dominguez Water Co. to provide water service to the street wash.
 - All needed protection for electrical equipment shall be provided through circuit breakers.
 - If a pneumatic ejector other than the type specified should be installed, the contractor shall be responsible for setting any necessary ducts, fittings, etc.
 - Electrical conduit shall be underground from power pole to pump station.
 - If ground water is encountered, a water-proof membrane or coating shall be applied to the outside of the pump station. The membrane or coating shall extend 1' above the perforated water table.
 - All pipes shall be securely fastened to be walls with cast iron pipe straps.
 - Rigid electrical conduit shall be provided within the walls of floor of all structures. Conduit for the ejectors to be brought to the ejectors through the floors.
 - 1 1/2" Cor. Tee from pipe from the same pump shall have a 6" length of pipe within the manhole which will direct the flow at the 1 1/2" line down toward the base of the manhole.

28,351

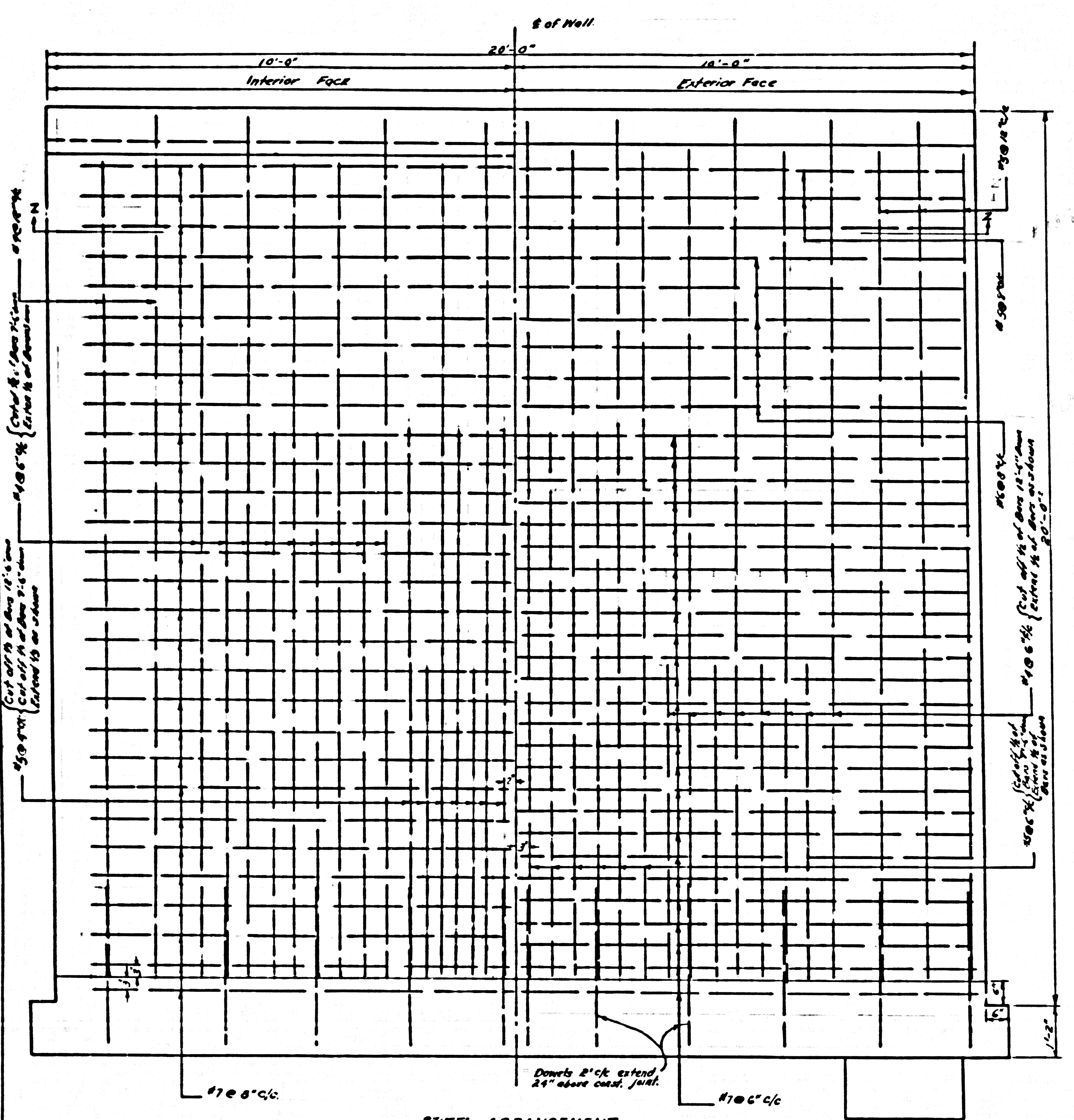
PRIVATE CONTRACT NO. 5158
CONSTRUCTION PLAN FOR
SEWAGE PUMP STATION
TO SERVE
TRACTS No 24893 & 24894
 SHEET 5 OF 7 SHEETS
 SCALE 1/4" = 1'-0" EXCEPT AS NOTED MAY 1933
COUNTY OF LOS ANGELES
 JOHN A. LAMBIE COUNTY ENGINEER
 PREPARED IN THE OFFICES
 OF
BARCLAY-PEARSON CO. INC.
Edward J. Pearson
 R.S. CE 9713



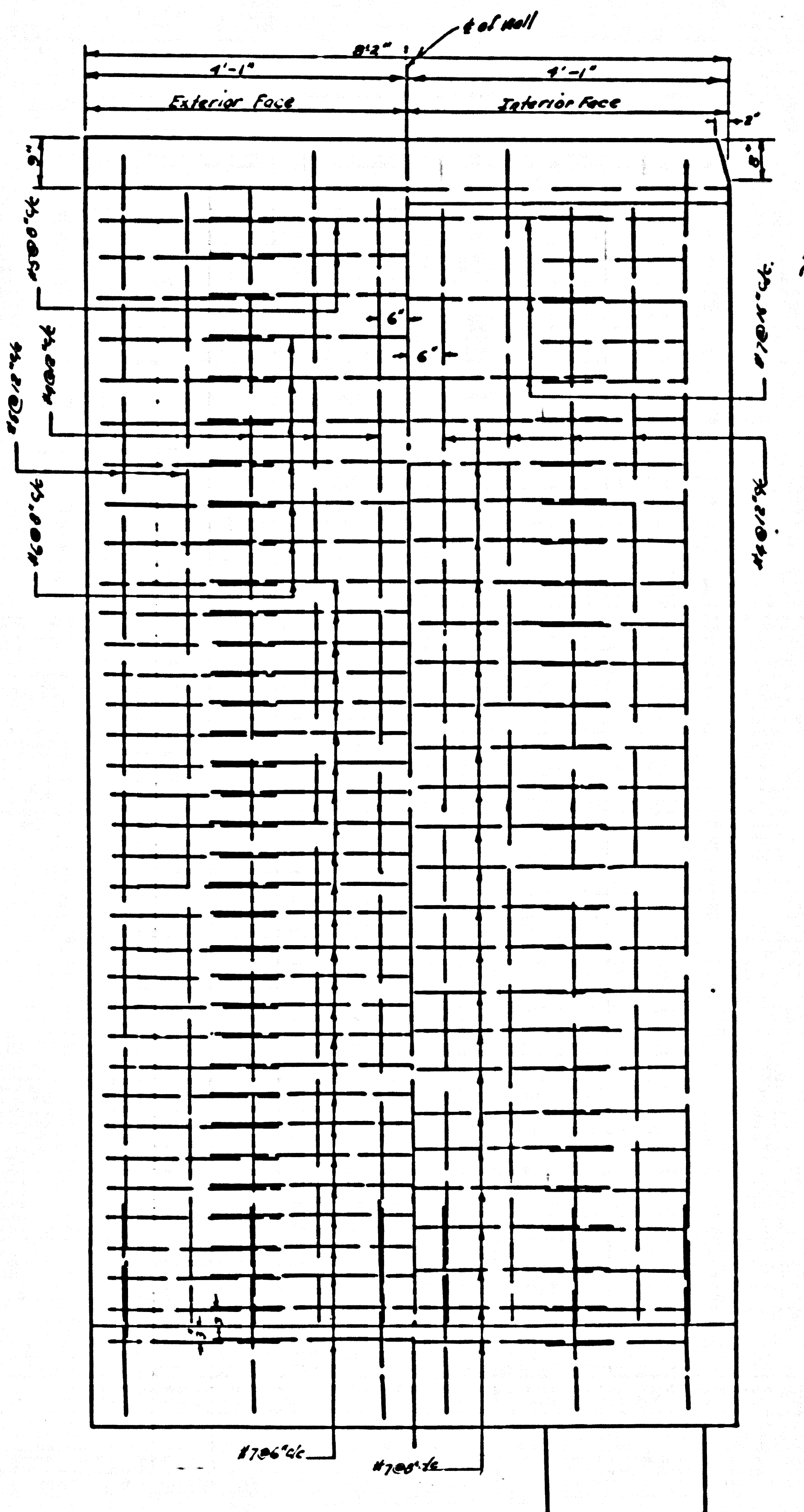
WALL STEEL SECTION 2-2



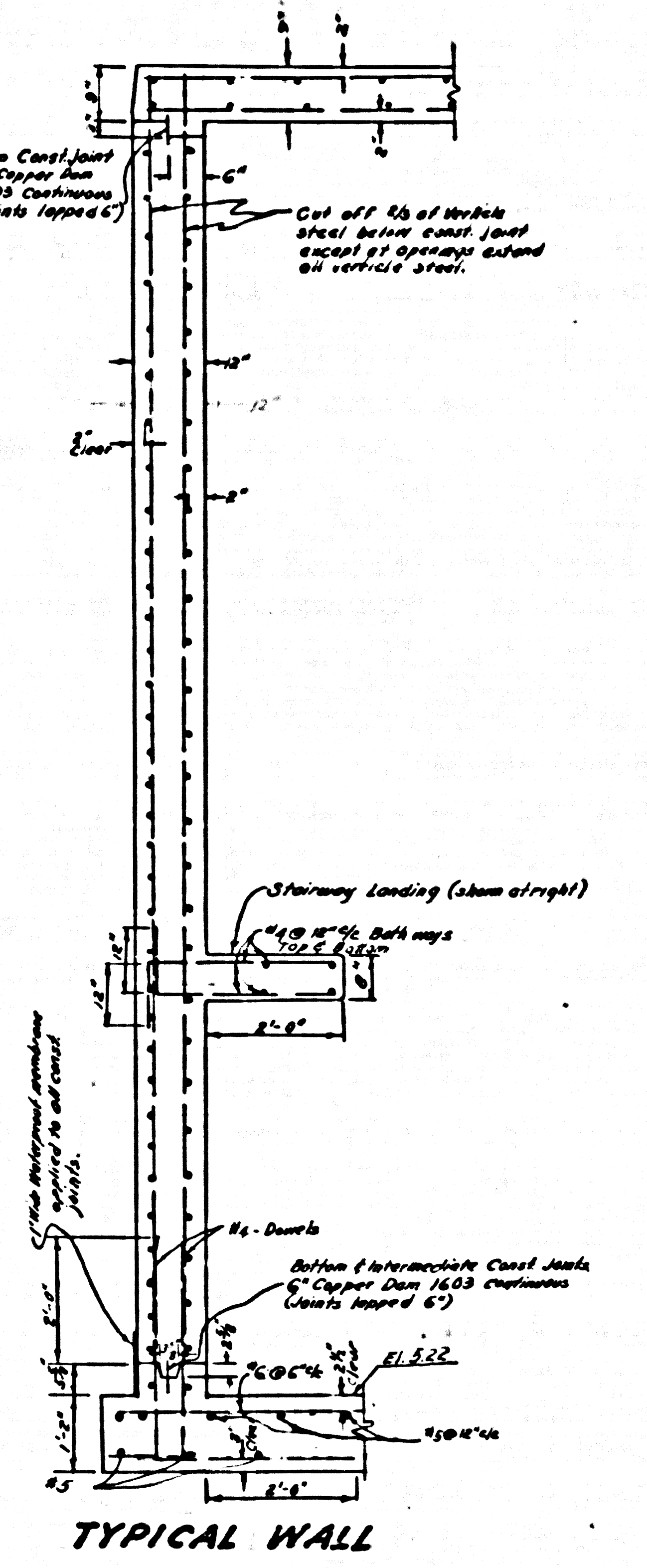
SUMP DETAIL SEE BASE SLAB SHEET



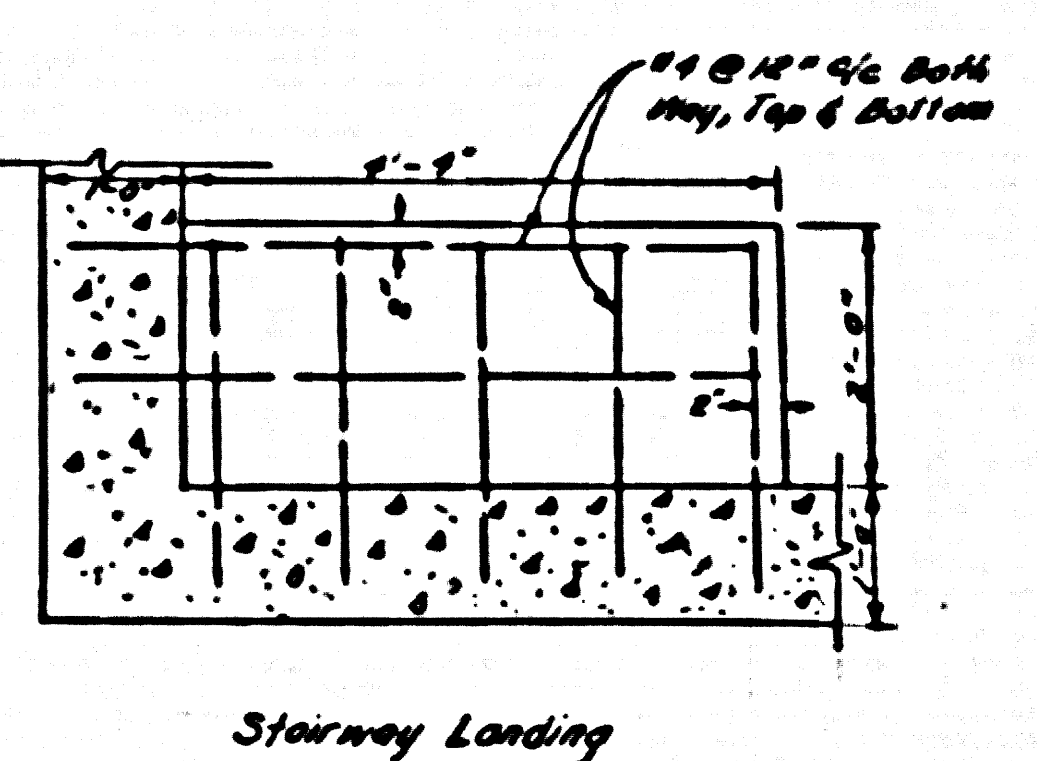
STEEL ARRANGEMENT LONG WALLS



STEEL ARRANGEMENT SHORT WALLS



TYPICAL WALL SECTION Y-Y



Stairway Landing

28,352

PRIVATE CONTRACT NO. 5158
 CONSTRUCTION PLAN FOR
 SEWAGE PUMP STATION
 TO SERVE
 TRACTS N^o 24893 & 24894
 SHEET 6 OF 7 SHEETS
 SCALE 1/4"=1'-0" EXCEPT AS NOTED MAY 1959
 COUNTY OF LOS ANGELES
 JOHN A. LAMBIE COUNTY ENGINEER
 PREPARED IN THE OFFICES
 OF
 BARCLAY-PEARSON CO. INC.
 REG. CE 9783

