

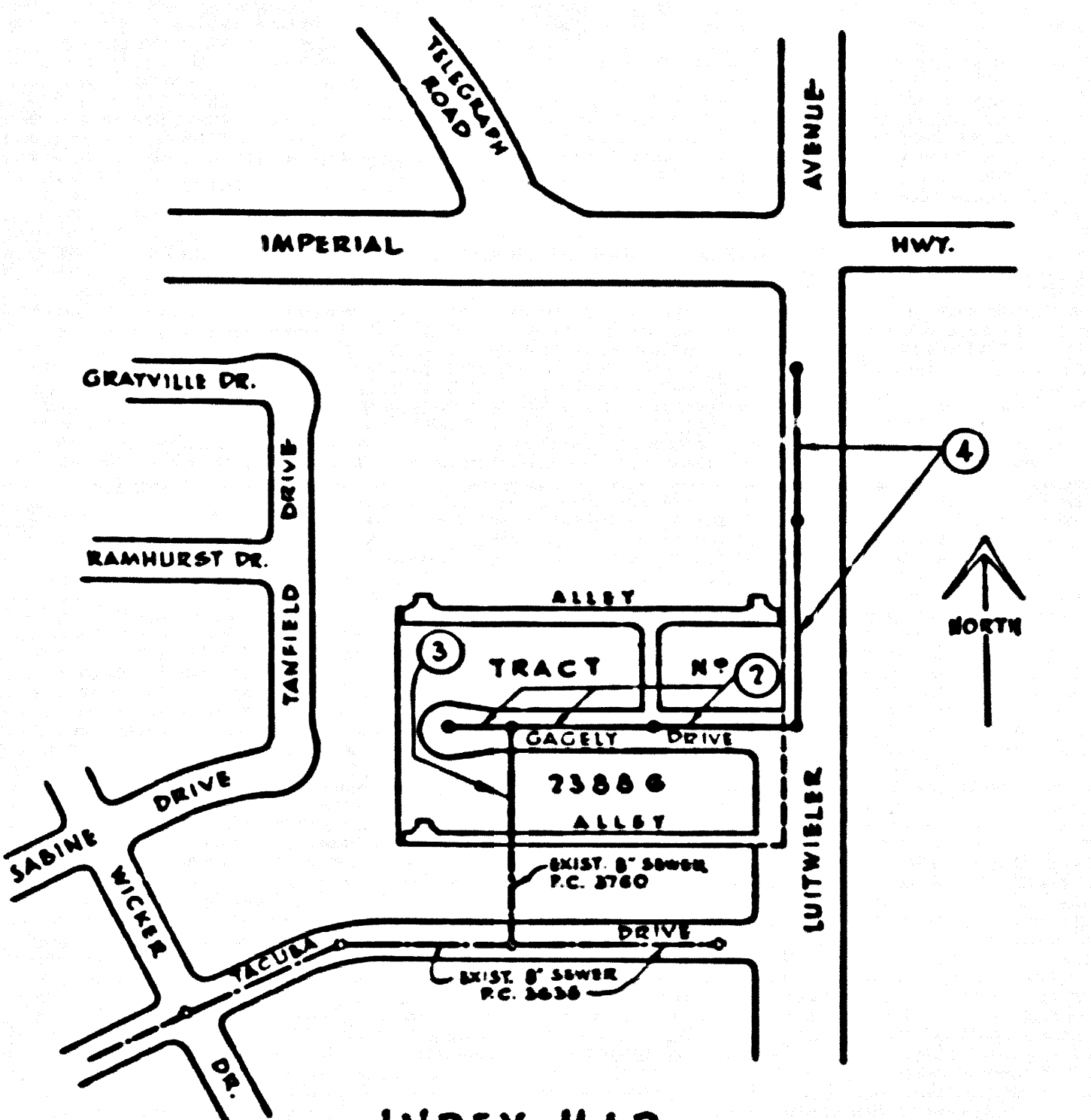
NORWALK BLDG. DIST. NO. 4.2

PROFILE ALIGNMENT AND GRADE OF P.C. 5159  
 SANITARY SEWERS PAGE 1  
 TO BE CONSTRUCTED IN J.N. 0350.97

TRACT No 23886  
 PRIVATE CONTRACT NO. 5159  
 JOB NUMBER 0350.97  
 W.S. 34

2 SHEETS, 3 PAGES  
 SCALE: VERT. 1"=4' HORIZ. 1"=40' JUNE, 1959  
 PREPARED IN THE OFFICES OF

28,427



INDEX MAP  
 SCALE: 1"=300'  
 P.C. 5159  
 TRACT No 23886

- NOTES:
- PROVIDE STAKES ON THE PROPERTY LINE OR PROPERTY LINES PRODUCED AT RIGHT ANGLES TO THE SEWER LINE AT THE CENTER LINE OF EACH MANHOLE.
  - NO REPRESENTATIVE OF THE COUNTY ENGINEER WILL SURVEY OR LAYOUT ANY PORTION OF THE WORK.
  - THE OWNER OR HIS AUTHORIZED REPRESENTATIVE SHALL FURNISH THE COUNTY ENGINEER WITH GRADE SHEETS AND STATION FOR ALL HOUSE LATERALS AND T BRANCHES AND SHALL PROVIDE STAKES FOR THEM AT THESE POINTS LOCATIONS WITH STATIONING PLAINLY MARKED. ANY CHANGE IN LOCATION SHALL BE REQUESTED IN WRITING BY THE OWNER OR HIS REPRESENTATIVE.
  - NO REVISIONS SHALL BE MADE IN 7-1/2" PLANS WITHOUT THE APPROVAL OF THE COUNTY ENGINEER.
  - USE STANDARD MANHOLE FRAMES AND COVERS, S-A-117
  - USE STANDARD STRENGTH PIPE EXCEPT AS NOTED.
  - USE CEMENT MORTAR, "EDGE LOCK" OR "SPREAD SEAL" FOR VITRIFIED CLAY PIPE JOINTS PER SPEC'S SEC 34 & 40
  - RESURFACE ALL TRENCH WITHIN PAVED AREA TO MEET L. A. COUNTY ROAD DEPT., OR CALIF. STATE HIGHWAY DEPT. REQUIREMENTS IN ACCORDANCE WITH PERMITS.
  - INCLUDE FOUR FEET OF EARTH AT POINTS OF INTERFERENCE WITH POLES, S.A.177 - CLASS III
  - HOUSE LATERALS TO BE CONSTRUCTED WITH INVERTS AT PROPERTY LINE 8" PER INCH CURB GRADE EXCEPT AS NOTED
  - ALL STRUCTURES SHALL BE BRICK SEWER STRUCTURES, S-A-104
  - FOR ALLOWABLE LEAKAGE TEST USE FORMULA NO. \_\_\_\_\_ SPEC'S, SEC 34
  - MANHOLE TOPS IN UNIMPROVED PORTIONS OF WAY TO BE 6" ABOVE FINISHED GRADE
  - THE PRIVATE ENGINEER SHALL FURNISH THE HOUSE LATERAL DEPTH AT THE PROPERTY LINE BELOW THE TOP OF CURB ELEVATION FOR EACH HOUSE LATERAL ON THE GRADE SHEET.
  - STANDARD SPECIFICATIONS DATED MAY 15, 1959 APPLY IN THE CONSTRUCTION OF THIS PROJECT.

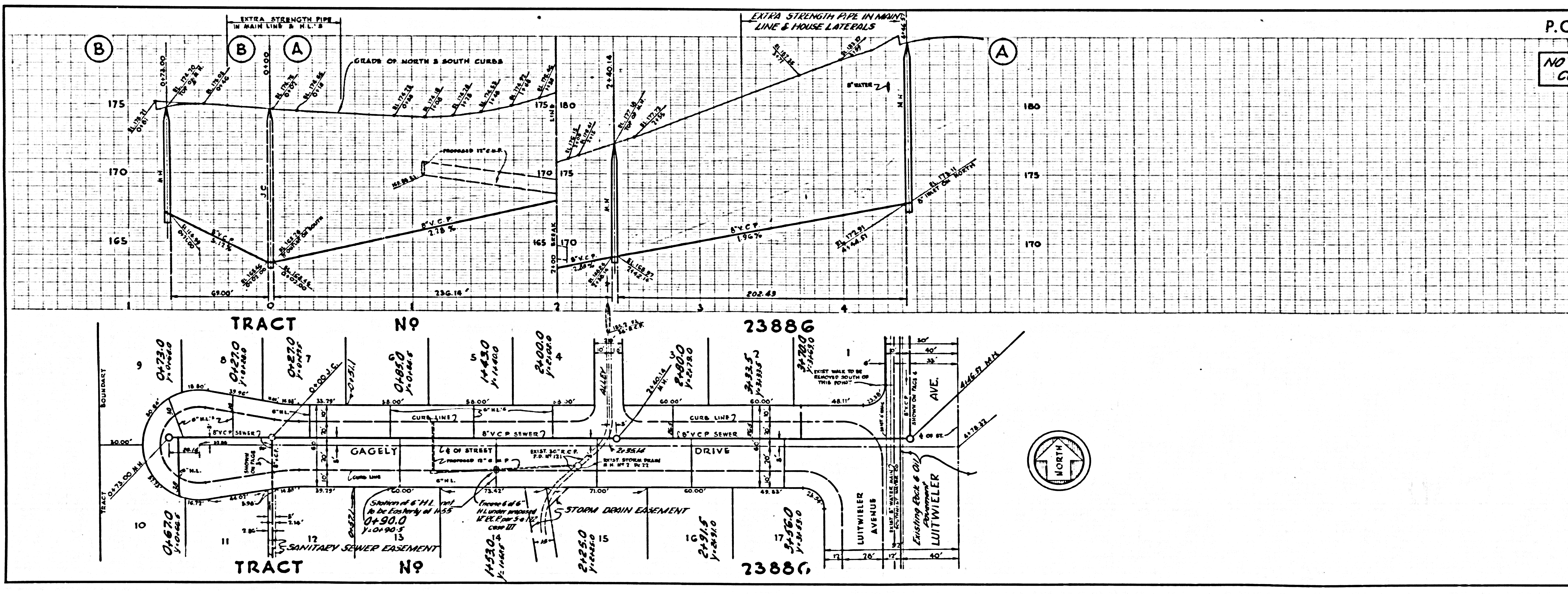
12. FIGURE IN CIRCLE AT END OF HOUSE LATERAL INDICATES DEPTH BELOW GRADE OF CURB.  
 BENCH MARK: 374042 - ELEVATION 171.836 - L.A. CO. ROAD DEPARTMENT MONUMENT  
 IN MAC PAVT. 6'2" EAST OF LUITWILER AVE. 18'2" WEST OF TEL. POLE W 56514 1736'2"  
 SOUTH OF 1/2 IMPERIAL HIGHWAY IN CASING WITH COVER. LA MIRAIDA QUAD-1955

NO CHARGE FOR CONNECTIONS  
*W. H. K. Hughes*

NOTE: THE CONTRACTOR SHALL NOTIFY THE CONSTRUCTION AND STORM DRAIN DIVISION BY TELEPHONE - MADISON 9-4747, EXT 362 AT LEAST 24 HOURS BEFORE STARTING ANY WORK UNDER THIS CONTRACT

REVISION:  
 DELETE PAGE 3A  
 ADD PAGE 4  
 BY *W. H. K. Hughes*  
 APPROVED

NOTES:  
 GRADES TO WHICH THIS IMPROVEMENT IS TO BE CONSTRUCTED ARE SHOWN ON PLANS AND PROFILE GRADE POINTS FOR TOP OF CURB, CENTER LINE OF STREET, OR CENTER LINE OF ALLEY ARE SHOWN BY CIRCLES ON PROFILE. AT ALL POINTS BETWEEN THE SHARED POINTS THE GRADE SHALL BE ESTABLISHED SO AS TO CONFORM TO A STRAIGHT LINE DRAWN BETWEEN SAID SHARED POINTS.  
 ELEVATIONS ARE IN FEET ABOVE U.S.C. & G.S. MEAN DATUM OF 1929.  
 THIS DRAWING AND THE DATA HEREON ARE HEREBY MADE A PART OF THE SPECIFICATIONS.  
 BEFORE WORK CAN BE STARTED THE CONTRACTOR MUST OBTAIN A PERMIT TO EXCAVATE IN COUNTY STREETS AND SHALL BE PROSECUTED ONLY IN THE PRESENCE OF THE COUNTY ENGINEER.  
 BEFORE WORK CAN BE STARTED THE CONTRACTOR MUST OBTAIN A PERMIT TO EXCAVATE IN COUNTY STREETS FROM THE L. A. COUNTY ROAD DEPT., 815 1/2 N. 4th ST. AND MAKE A DEPOSIT WITH THE COUNTY ENGINEER, ROOM 334 PAM AMERICAN BUILDING, 333 1/2 BROADWAY SUFFICIENT TO COVER THE COST OF CONSTRUCTION INSPECTION AND BONDING.  
 APPROVAL OF THIS PLAN BY THE COUNTY OF LOS ANGELES DOES NOT CONSTITUTE A REPRESENTATION AS TO THE ACCURACY OF THE LOCATION OF OR THE EXISTENCE OR NON-EXISTENCE OF ANY UNDERGROUND UTILITY PIPE, OR STRUCTURE WITHIN THE LIMITS OF THIS PROJECT. THIS NOTE APPLIES TO ALL PAGES.  
 IF WORK IS TO BE DONE IN A STATE HIGHWAY, A PERMIT MUST BE OBTAINED FROM THE STATE OF CALIFORNIA, DIVISION OF HIGHWAYS, 120 SOUTH SHORE DRIVE.  
 COUNTY OF LOS ANGELES, CALIFORNIA  
 APPROVED, JOHN A. LAMBE, COUNTY ENGINEER  
 APPROVED, C. R. COMPTON, CHIEF ENGINEER  
 CO. SEAL NO. \_\_\_\_\_  
 BY *W. H. K. Hughes* BY *L. P. Thompson*  
 SEALATION ENGINEER OFFICE ENGINEER  
 CHECKED BY *Carl H. Brown* 1/5/59  
 OFFICE OF COUNTY ENGINEER, R.M. C. E. NO. 10, 677  
 SUBMITTED BY: *John L. Estlin* P.E. 22-59  
 CIVIL ENGINEER, REG. C.E. NO. 3377



P.C. 5159 PAGE 2

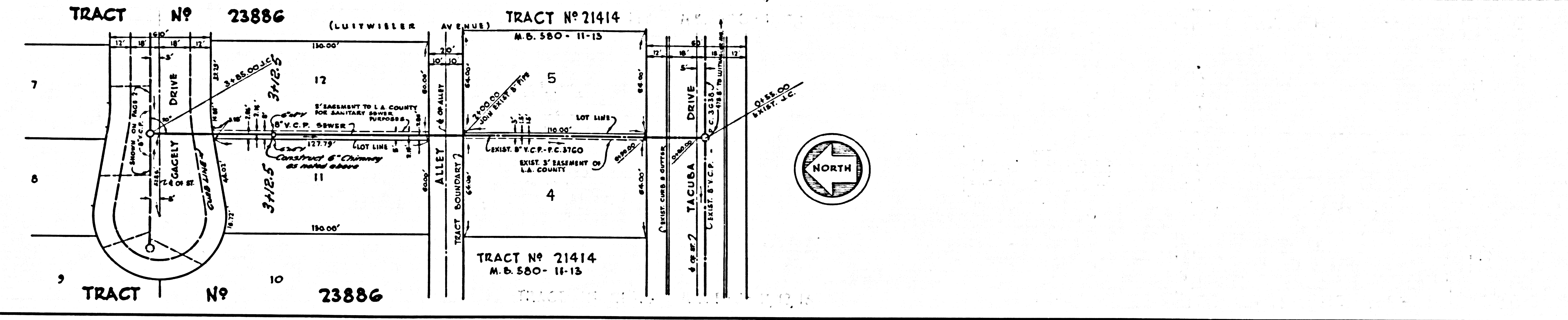
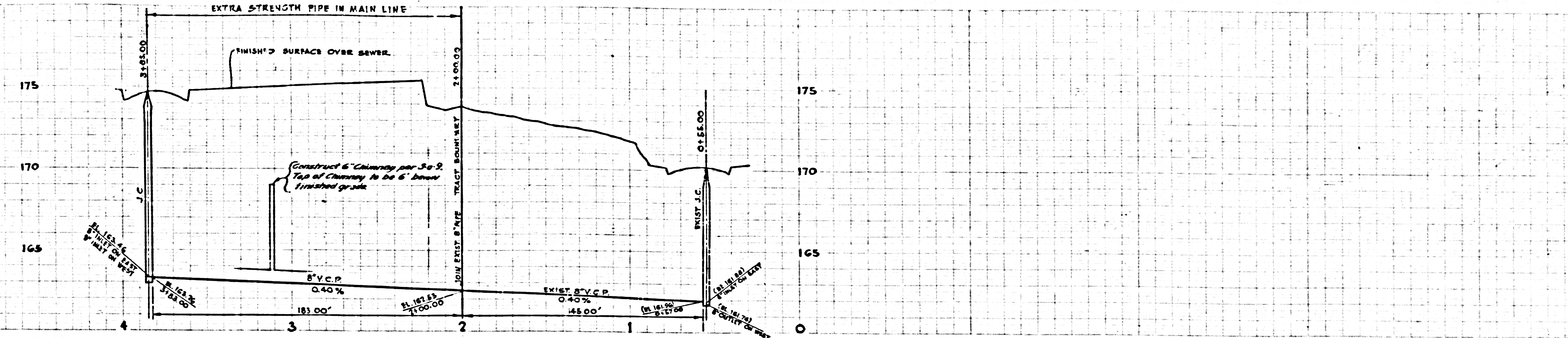
NO CHARGE FOR CONNECTIONS

28,428

H. & B. 100 99. CAL. BLUE PRINT UNIT NO. 1

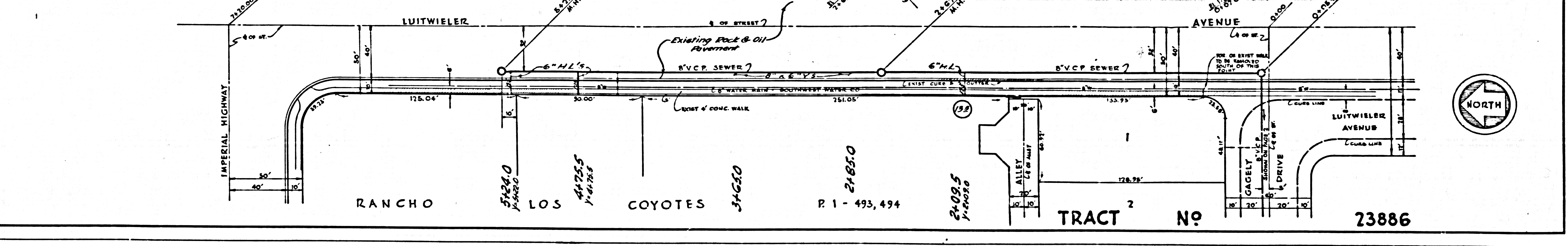
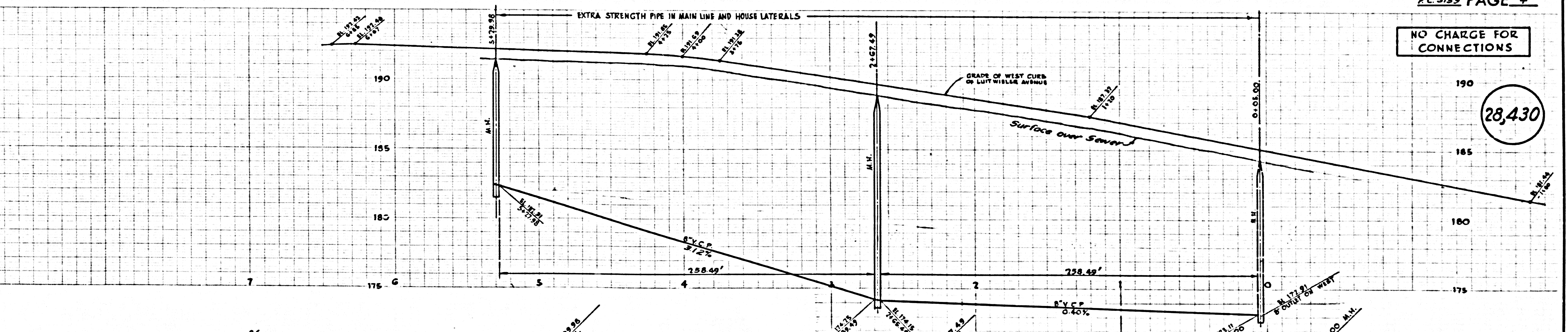
NO CHARGE FOR CONNECTIONS

28,429



NO CHARGE FOR CONNECTIONS

28,430



11/18/50