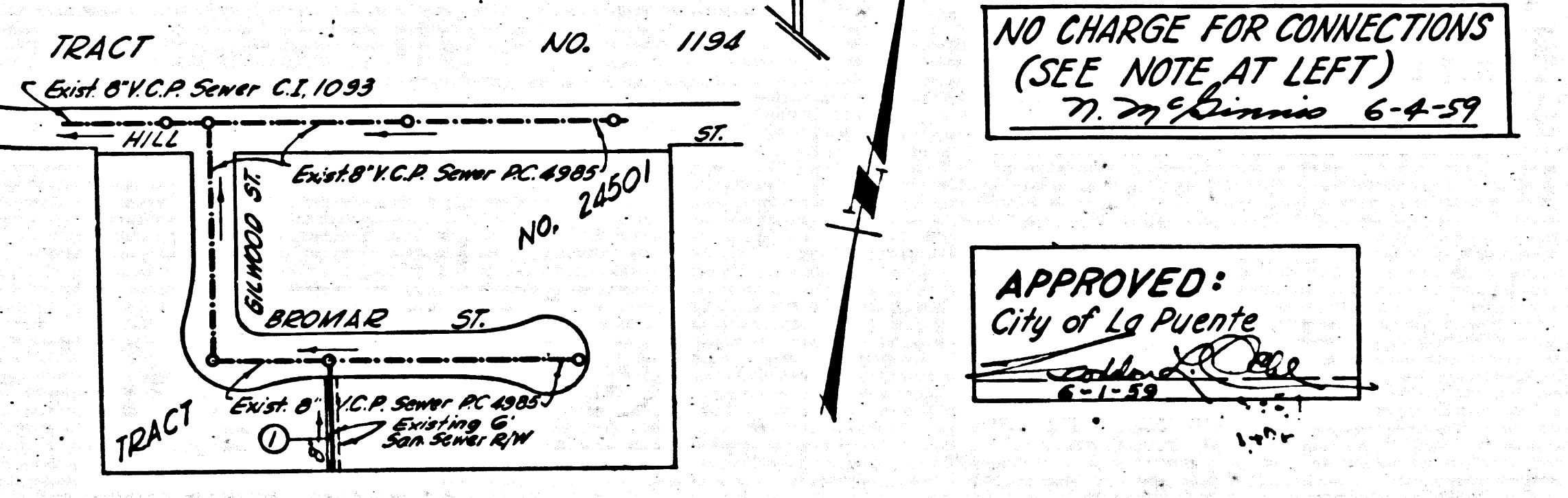


LA PUENTE Bldg. Dist. No. **202**

- NOTE:
- Provide stakes on the property lines or property lines produced at right angles to the sewer line at the center line of each manhole.
- No representative of the City Engineer will survey or layout any portion of the work. The owner or his authorized representative shall furnish the City Engineer with grade sheets and stations for all house laterals and Y branches and shall provide stakes for them at their proper locations with stationing plainly marked. Any change in location shall be requested in writing by the owner or his representative.
- No revisions shall be made in these plans without the approval of the City Engineer.
1. Use standard manhole frames and covers, S-a-117.
 2. Use standard strength pipe except as noted.
 3. Use cement mortar, *Wedge Lock*, or *Speed Seal* for all vitrified clay pipe joints; Per Spec. 5-a-48.
 4. Resurface all trench within paved area to meet L.A. County Road Dept. or Calif. State Highway Dept. requirements in accordance with permit.
 5. Encase four feet of sewer at points of interference with poles, S-a-172, Case II.
 6. House laterals to be constructed with inverts at property line.....feet below curb grade except as noted.
 7. All structures shall be brick sewer structures, S-a-104.
 8. For allowable leakage test, use Formula No..... Spec's., Sec. 54.
 9. Manhole tops in unimproved Rights-of-Way to be 6" above finish grade.
 10. The contractor shall notify the construction and Storm Drain division by telephone, Madison 3-4747, Ext. 362, at least 24 hours before starting any work under this contract.
 11. Standard Specifications dated May 15, 1959 apply in the construction of this project.



• INDEX MAP •
 PG. 5161 Scale: 1"=200'

PROFILE, ALIGNMENT AND GRADE OF
SANITARY SEWERS
 TO BE CONSTRUCTED IN
BROMAR STREET
 AND A
SANITARY SEWER RIGHT OF WAY
 PRIVATE CONTRACT NO. 5161
 W. S. 38 1 PAGE 1 SHEET
 MAY 1959

Scale: VERT. 1"=4'
 HORIZ. 1"=40'

PREPARED IN THE OFFICES OF
KEMMERER ENGINEERING CO., INC.
 By *Robert K. F. Low*
 Reg. C. E. No. 11349
 FOR LEGEND SEE PLAN NO. S-a-64

NOTE:

Grades to which this improvement is to be constructed are shown on plans and profiles. Grade points for top of curbs, center line of streets, or center line of alleys are shown by circles on profiles. At all points between designated points the grade shall be established so as to conform to a straight line drawn between said designated points.

Elevations are in feet above U.S.C. & G.S. Sea Level datum of 1929.

This drawing and the data hereon are hereby made a part of the specifications. Work shall be constructed according to specifications on file in the office of the City Engineer and shall be prosecuted only in the presence of the City Engineer.

Before work can be started, the contractor must obtain a permit to excavate in City streets from the L.A. County Road Dept., Dist. No. 1 and make a deposit with the City Engineer, Rm. 324, 253 S. Broadway, sufficient to cover the cost of construction inspection and record plans.

Approval of this plan by the City of La Puente does not constitute a representation as to the accuracy of the location of or the existence or non-existence of any underground utility, pipe, or structure within the limits of this project. This note applies to all sheets.

If work is to be done in a State Highway, a permit must be obtained from the State of California, Division of Highways, 120 South Spring Street.

CITY OF LA PUENTE, CALIFORNIA
 Approved, John A. Lambie, City Engineer
 Approved, C.R. Compton, Chief Eng. CO. SAN. DIST. NO. 12
 By *Lois A. Hughes*, Sanitary Engineer
 Checked by *W. J. [Signature]*, Office Engineer
 Office of City Engineer, Reg. C. E. No. 5406

PC 5161

PC 5161

PC 5161