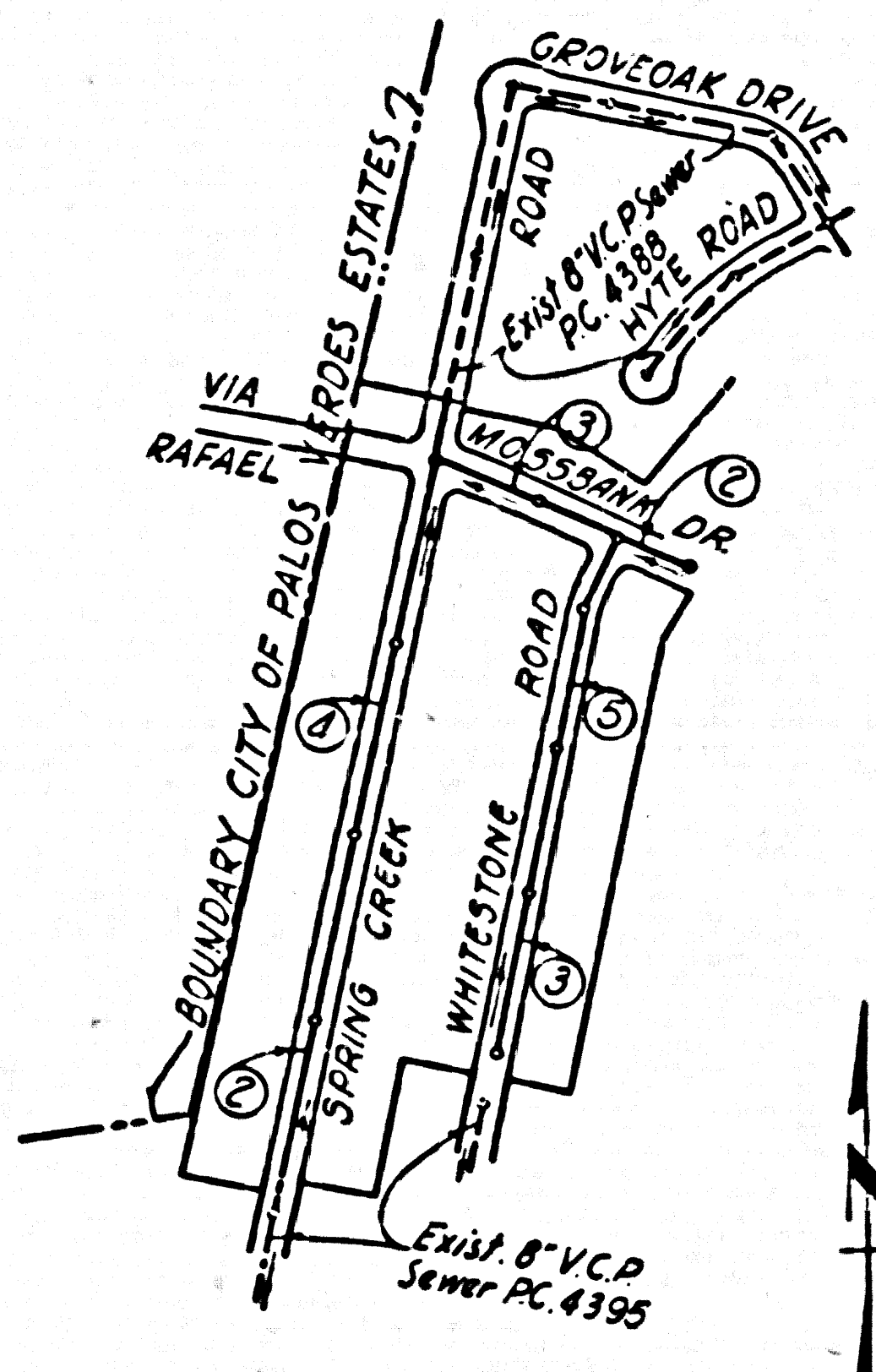


BENCH MARK
 County Surveyor B.M. U.S.C.G.S. 51d,
 Disk Stamp No. Q-708-1946, Set
 Flush with ground 45 E. N. of E.
 of Palos Verdes Drive North and 47d
 East of E. of Narbonne Ave.
 Elev = 355.518

NOTE:
 County Surveyor B.M. 36-E, County
 Precise Survey 1953 AD, Elev. 358.582.
 Add 0.065' to all elevations shown
 hereon to agree with 1953 adjustment.



INDEX MAP
 TRACT No. 21355
 SCALE: 1"=400'
 RC 5167

**ISSUE NO PERMITS
 UNTIL TRACTS
 21354 & 21423 ARE RECORDED**

**NO CHARGE FOR
 CONNECTIONS**
 C. P. K... 6-3-59

LOMITA BLDG. DIST. NO. 71

- NOTES:**
- PROVIDE STAKES ON THE PROPERTY LINE OR PROPERTY LINES PRODUCED AT RIGHT ANGLES TO THE SEWER LINE AT THE CENTER LINE OF EACH MANHOLE.
 - NO ADJUSTMENTS OF THE COUNTY ENGINEER SHALL BE MADE OR LAYOUT ANY PORTION OF THE WORK.
 - THE OWNER OR HIS REPRESENTATIVE SHALL FURNISH THE COUNTY ENGINEER WITH GRADE SHEETS AND STATION FOR ALL HOUSE LATERALS AND Y BRANCHES AND SHALL PROVIDE STAKES FOR THESE AT THEIR PROPER LOCATIONS WITH STATIONING PLAINLY MARKED. ANY CHANGE IN LOCATION SHALL BE REQUESTED IN WRITING BY THE OWNER OR HIS REPRESENTATIVE.
 - NO REVISIONS SHALL BE MADE IN THESE PLANS WITHOUT THE APPROVAL OF THE COUNTY ENGINEER.
 - USE STANDARD MANHOLE FRAMES AND COVERS, 6-11/2, EXCEPT AS NOTED.
 - USE STANDARD STRENGTH PIPE EXCEPT AS NOTED.
 - USE CAMBRY MORTAR OR "WEDGE-LOCK" OR "SPEED-SEAL" FOR ALL VITRIFIED CLAY PIPE JOINTS PER SPEC'S, SEC. 904 & 908.
 - REPAIR ALL TRENCH WITHIN NADIR AREA TO MEET L.A. COUNTY ROAD DEPT. OR CALIF. STATE HIGHWAY DEPT. REQUIREMENTS IN ACCORDANCE WITH PERMITS.
 - EXPOSE FOUR FEET OF SEWER AT POINTS OF INTERFERENCE WITH POLES, 2'-0" MIN. CLEARANCE.
 - HOUSE LATERALS TO BE CONSTRUCTED WITH ENDS AT PROPERTY LINE 18" BELOW CURB GRADE EXCEPT AS NOTED.
 - ALL STRUCTURES SHALL BE BRICK RE-USE STRUCTURES, 8-1/2" MIN. EXCEPT AS NOTED.
 - FOR ALLOWABLE LEAKAGE TEST SEE FORMULA NO. 10, SPEC'S, SEC. 94.
 - MANHOLE TOPS IN UNAPPROVED SHOWS-OR-WAY TO BE 6" ABOVE FINISHED GRADE.
 - THE PRIVATE ENGINEER IS TO FURNISH THE HOUSE LATERAL (EPT) AT THE PROPERTY LINE BELOW THE TOP OF CURB ELEVATION FOR EACH HOUSE LATERAL ON THE GRADE SHEET.
 - THE CONTRACTOR SHALL NOTIFY THE CONSTRUCTION AND STORM DRAIN DIVISION BY TELEPHONE, MADISON 9-878, EXT. 866, AT LEAST 24 HOURS BEFORE STARTING ANY WORK UNDER THIS CONTRACT.
 - IF NO CONSTRUCTION SHALL BE ALLOWED IN PAVED AREAS UNLESS ACCEPTABLE CERTIFICATION IS SUBMITTED TO THE CONSTRUCTION DIVISION OF THE COUNTY ENGINEER'S DEPARTMENT THAT COMPLETION IS GUARANTEED WITHIN 90 DAYS.
 - IF COMPACTION IS LESS THAN 90% THE SEWER MUST BE CIRCLED AS SUSPECT ON PLANS AND CORRECTED TO 90% OR GREATER THAN 90% SHALL BE SPECIAL HANDLE & 95% OR GREATER THAN 90% HOWEVER, JOINT COMPACTION MUST BE SUBSTITUTED FOR COMPACTION FOR ALL JOINTS IN PAVED AREAS.
 - STANDARD SPECIFICATIONS DATED MAY 15, 1959 APPLY IN THE CONSTRUCTION OF THIS PROJECT.

ENGINEERING SERVICE CORPORATION
 1127 W. WASHINGTON BLVD.
 LOS ANGELES 15, CALIF. RI. 9-7281

REVISIONS

TRACED BY CMR & B.B.
 DES'GD BY CMR & B.B.
 CK'D BY
 SUBMITTED

SUB STRUCTURES OK'D

W. O. NO.	DRAW. NO.	DATE	SCALE	L. B.	P. B.
6681-95		APRIL, 1959	AS NOTED		

PROFILE ALIGNMENT AND GRADE OF P.C. 5167
SANITARY SEWERS PAGE 1
 TO BE CONSTRUCTED IN J.N. 0351.01
DOUBLE SCALE

TRACT No. 21355

PRIVATE CONTRACT NO. 5167

W.S. 27
 SHEETS: 3 PAGES

SCALE: HORIZ. 1"=40' VERT. 1"=4'
 APRIL, 1959

PREPARED IN THE OFFICES OF
ENGINEERING SERVICE CORPORATION
 BY C. P. K... REG. C. E. NO. 3832

FOR LEGEND SEE PLAN NO. S-A-64

NOTES:

GRADE TO WHICH THIS IMPROVEMENT IS TO BE CONSTRUCTED AND SHOWN ON PLANS AND PROFILE. GRADE POINTS FOR TOP OF CURB, CENTER LINE OF ALLEYS AND SHOWN BY CIRCLES ON PROFILE. AT ALL POINTS BETWEEN INDICATED POINTS THE GRADE SHALL BE ESTABLISHED SO AS TO CONFORM TO A STRAIGHT LINE DRAWN BETWEEN SAID INDICATED POINTS.

ELEVATIONS ARE IN FEET ABOVE U.S.C.G.S. DATUM OR MEAN SEA LEVEL.
 THE BEARING AND THE DATA HEREON ARE HEREBY MADE A PART OF THE SPECIFICATIONS.
 WORK SHALL BE CONSTRUCTED ACCORDING TO SPECIFICATIONS ON FILE IN THE OFFICE OF THE COUNTY ENGINEER AND SHALL BE PROSECUTED ONLY IN THE PRESENCE OF THE COUNTY ENGINEER.

BEFORE WORK CAN BE STARTED, THE CONTRACTOR MUST OBTAIN A PERMIT TO EXCAVATE IN COUNTY STREETS FROM THE L.A. COUNTY ROAD DEPT., DIST. 4/8 3 AND MAKE A REPORT WITH THE COUNTY ENGINEER, ROOM 234 SAN AMERICAN BUILDING, 318 SO. BROADWAY SUBJECT TO COVER THE COST OF CONSTRUCTION INSPECTION AND RECORD PLANS.

APPROVAL OF THIS PLAN BY THE COUNTY OF LOS ANGELES DOES NOT CONSTITUTE A REPRESENTATION AS TO THE ACCURACY OF THE LOCATION OR THE EXISTENCE OR NON-EXISTENCE OF ANY UNDESIRABLE UTILITY PIPE, OR STRUCTURE WITHIN THE LIMITS OF THIS PROJECT. THIS NOTE APPLIES TO ALL PAGES.

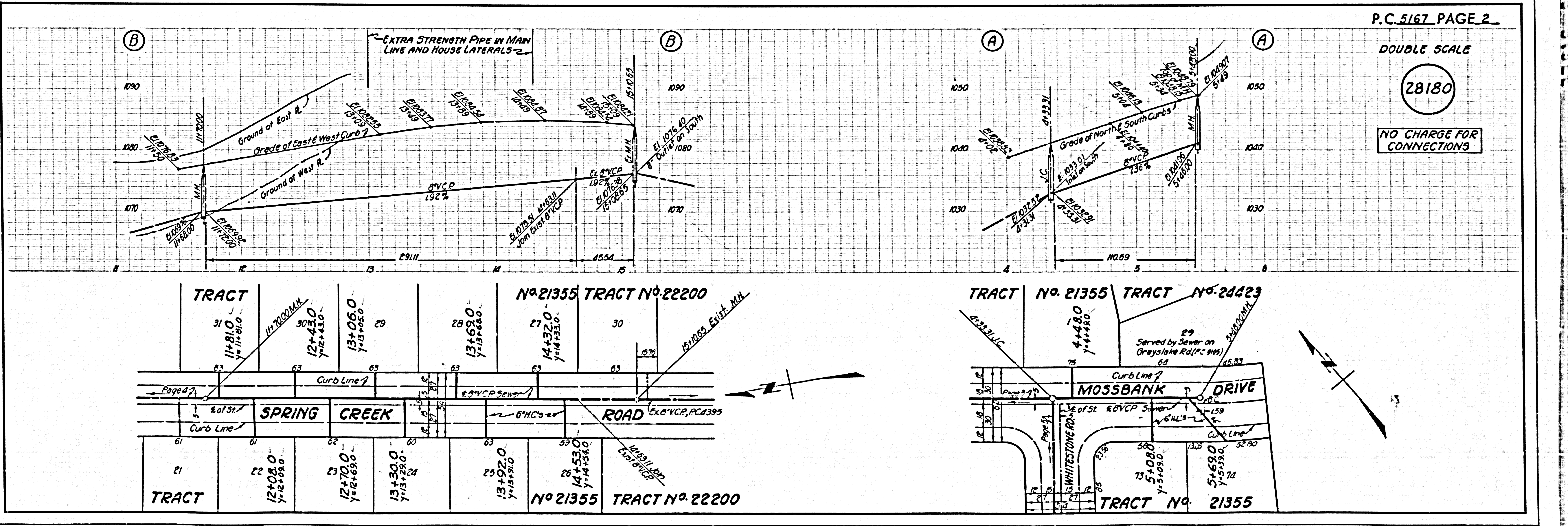
IF WORK IS TO BE DONE IN A STATE HIGHWAY, A PERMIT MUST BE OBTAINED FROM THE STATE OF CALIFORNIA, DIVISION OF HIGHWAYS, 138 SOUTH SPRING STREET.

COUNTY OF LOS ANGELES, CALIFORNIA

APPROVED, JOHN A. LAMBE, COUNTY ENGINEER APPROVED, C. P. K... CHIEF ENGINEER

CHECKED BY SK Oida 6-1-59 OFFICE ENGINEER

OFFICE OF COUNTY ENGINEER, REG. C. E. NO. 3406



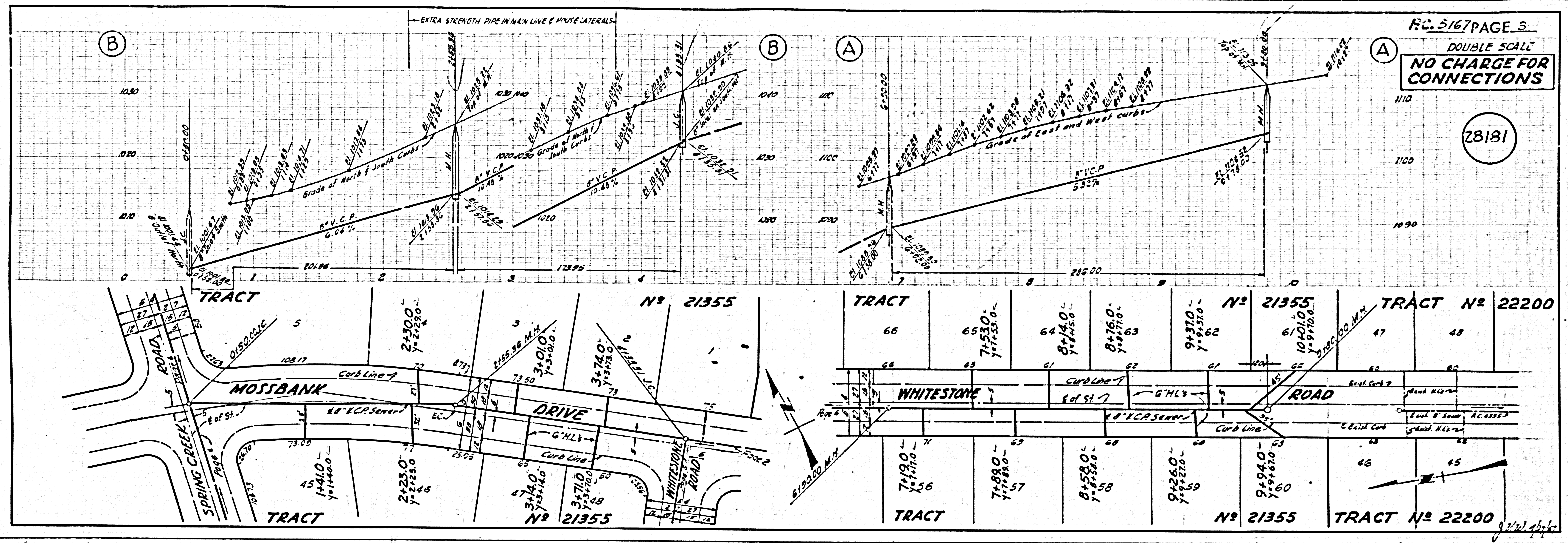
P.C. 5167 PAGE 2
DOUBLE SCALE

(28180)

NO CHARGE FOR CONNECTIONS

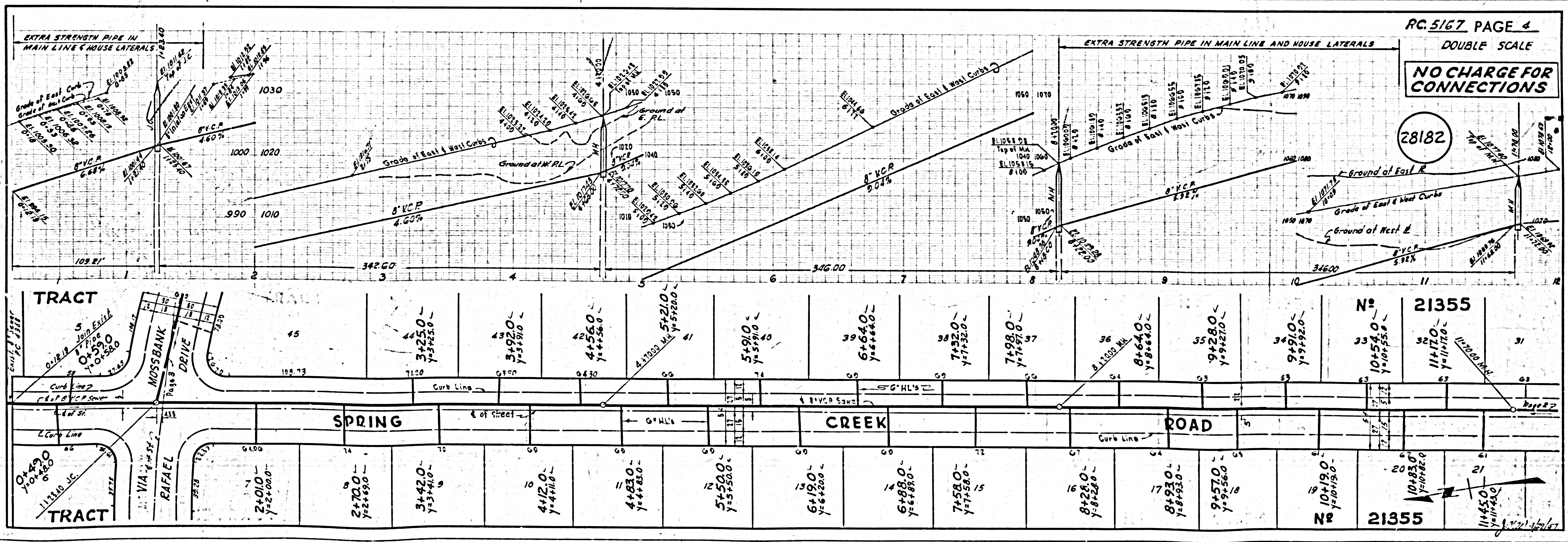
DOUBLE SCALE
NO CHARGE FOR CONNECTIONS

28181



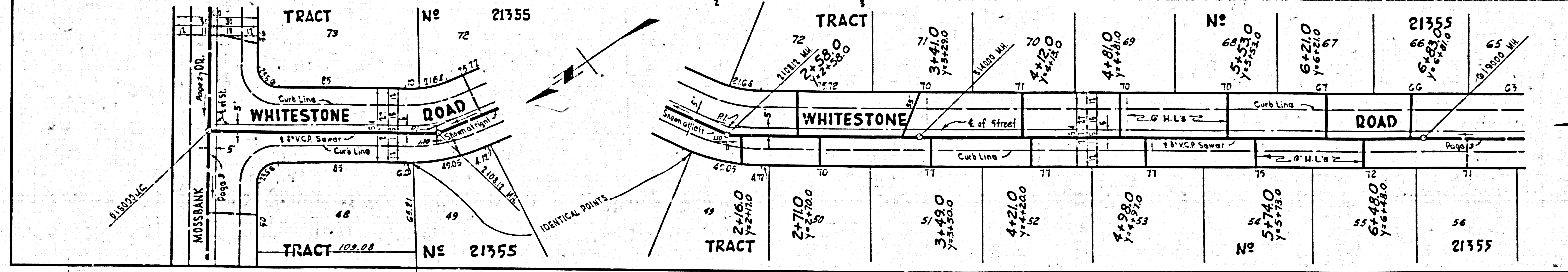
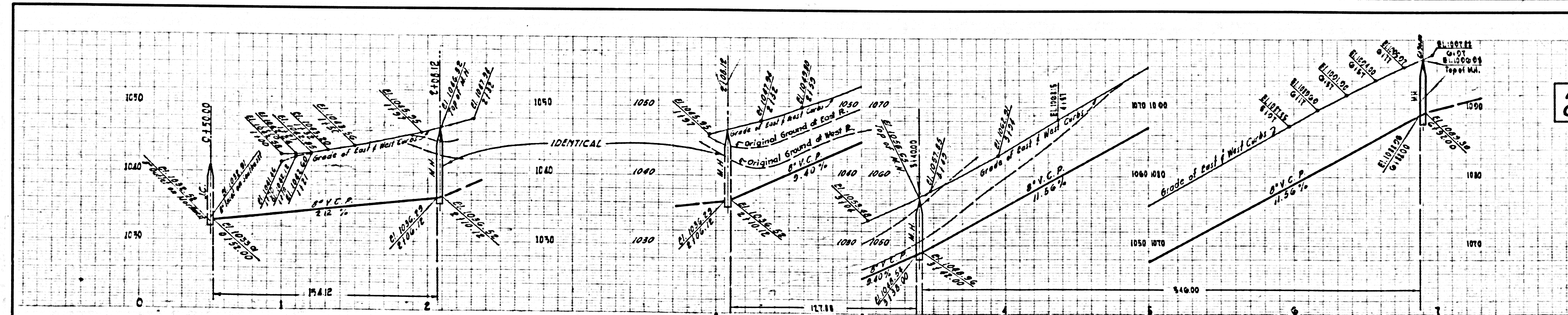
DOUBLE SCALE
NO CHARGE FOR CONNECTIONS

28182



NO CHARGE FOR CONNECTIONS

28183



g. J. J. J. J.