

LOMITA BLDG. DIST. NO. 71

PROFILE ALIGNMENT AND GRADE OF **P.C. 5168**
SANITARY SEWERS **PAGE 1**
 TO BE CONSTRUCTED IN **J.N. 0351.02**

TRACT No 21353

PRIVATE CONTRACT NO. 5168

W.S. 27
4 SHEETS, 7 PAGES

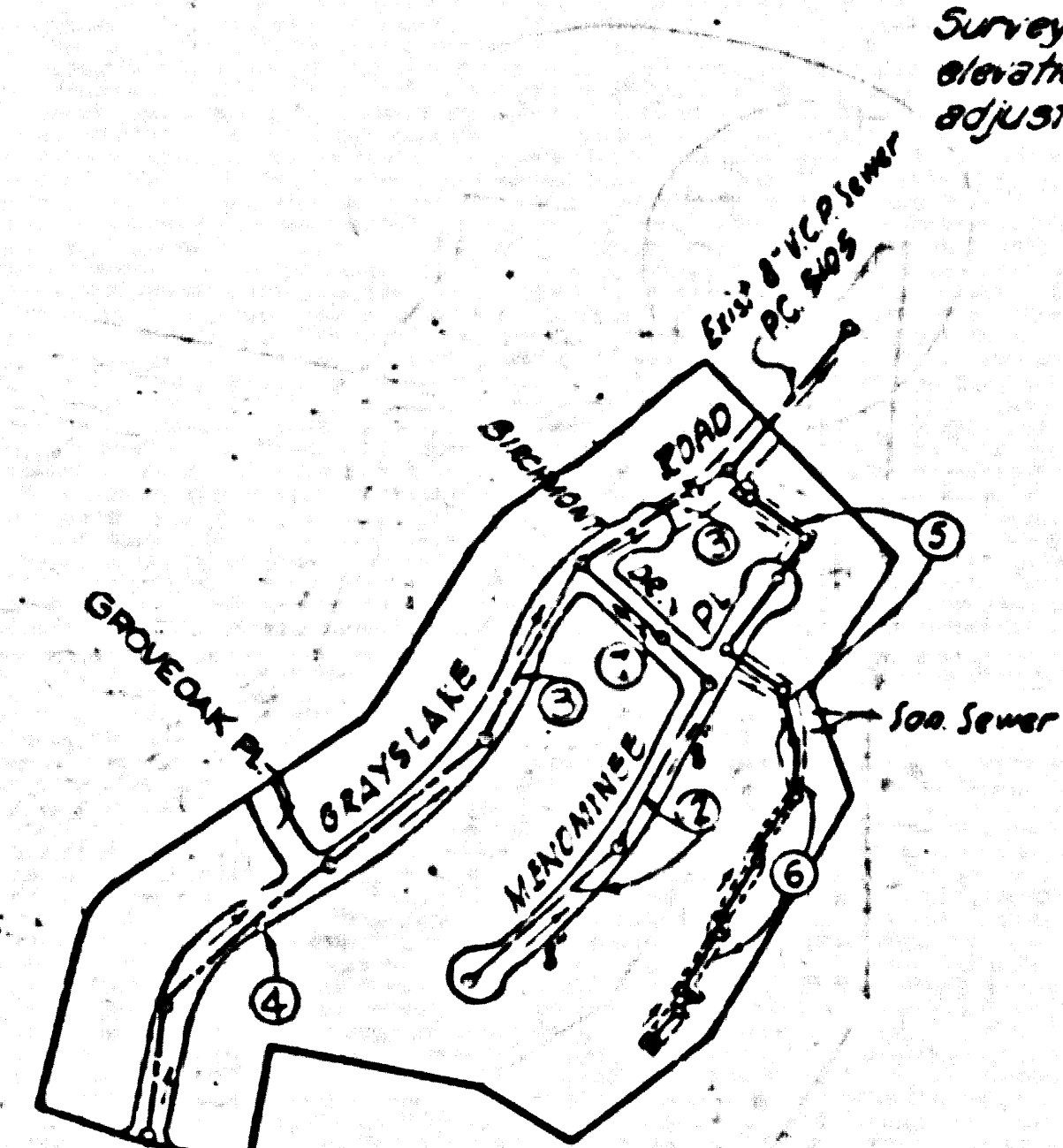
SCALE: $\frac{1"=20'}$ $\frac{1"=40'}$ **APRIL 1959**

PREPARED IN THE OFFICES OF
ENGINEERING SERVICE CORPORATION

By *E. P. King* REG. C.E. NO. 3692

FOR LEGEND SEE PLAN NO. S-A-64

(28,374)



INDEX MAP
 TRACT NO 21353
 Scale: 1"=400'
 P.C. 5168

REVISED CURB & SEWER
 GRADES IN MENOMINEE
 PLACE, PAGE 2
 CHECKED BY *E. P. King*
 Office of County Engineer
 R.E. 3660a

REVISED ALIGNMENT AND GRADES
 IN EASEMENT SOUTHERLY OF
 MENOMINEE PLACE, PAGE 516
 CHECKED BY *E. P. King*
 Office of County Engineer
 R.E. 3660a

ISSUE NO PERMITS PRIOR TO
 RECORDATION OF TR. N# 24423

NO CHARGE FOR CONNECTIONS

70 3660a 6-5-59

NOTES:

1. PROFILE STAFFS ON THE PROPERTY LINE OR PROPERTY LINES PRODUCED AT RIGHT ANGLES TO THE SEWER LINE AT THE CENTER LINE OF EACH MANHOLE.
2. THE OWNER OR HIS AUTHORIZED REPRESENTATIVE SHALL FURNISH THE COUNTY ENGINEER WITH SEAM SHEETS AND STATION FOR ALL HOUSE LATERALS AND Y BRANCHED AND SHALL PROVIDE STAFFS FOR THEM AT THESE PROPER LOCATIONS WITH STATIONING AND PLANET NUMBER. ANY CHANGE IN LOCATION SHALL BE REQUESTED BY THE OWNER OR HIS REPRESENTATIVE.
3. NO REVISIONS SHALL BE MADE IN THESE PLANS WITHOUT THE APPROVAL OF THE COUNTY ENGINEER.
4. USE STANDARD MANHOLE FRAMES AND COVERS, S.A-117, EXCEPT AS NOTED.
5. USE STANDARD STRENGTH PIPE EXCEPT AS NOTED.
6. USE CEMENT MORTAR OR "WEDGE-LOCK" OR "SIZED-BEAL" FOR ALL VITRIFIED CLAY PIPE JOINTS PER SPEC'S, SECT. 26 610.
7. ALL STRUCTURES SHALL BE BRICK SEWER STRUCTURES, S.A-194, EXCEPT AS NOTED.
8. EXHIBIT FOUR PART OF SEWER AT POINTS OF INTERFERENCE WITH POLES, S-P-176, CASE 17.
9. HOUSE LATERALS TO BE CONSTRUCTED WITH INVERTS AT PROPERTY LINE 6" SET BELOW CURB GRADE EXCEPT AS NOTED.
10. ALL STRUCTURES SHALL BE BRICK SEWER STRUCTURES, S.A-194, EXCEPT AS NOTED.
11. FOR AT-TOWARD LEAKAGE TEST USE FORMULA NO. 1304, SPEC'S, SEC. 30.
12. MANHOLE TOPS IN UNIMPROVED PORTS-OF-WAY TO BE 6" ABOVE FINISHED GRADE.
13. THE PLUMBER ENGINEER IS TO FURNISH THE HOUSE LATERAL DEPTH AT THE PROPERTY LINE BELOW THE TOP OF CURB ELEVATION FOR EACH HOUSE LATERAL, ON THE GRADE SHEET.
14. THE CONTRACTOR SHALL NOTIFY THE CONSTRUCTION AND STREETS DIVISION BY TELEPHONE, MAIL OR 3-830, 837, AND, AT LEAST 24 HOURS BEFORE STARTING ANY WORK UNDER THIS CONTRACT.
15. CONSTRUCTION SHALL BE RESTRICTED TO PAVED AREAS UNLESS ACCEPTABLE CERTIFICATION IS SUBMITTED TO THE CONSTRUCTION DIVISION OF THE COUNTY ENGINEER'S OFFICE THAT CONSTRUCTION IS NECESSARY IN AN UNPAVED AREA.
16. IF CONSTRUCTION IS LESS THAN 80% THE OWNER SHALL BE CHARGED AS SHOWN ON PLAN.
17. IF CONSTRUCTION IS MORE THAN 80% THE OWNER SHALL BE CHARGED AS SHOWN ON PLAN.
18. ALL CONSTRUCTION SHALL BE IN ACCORDANCE WITH THE SPECIFICATIONS OF THE PROJECT.
19. STANDARD SPECIFICATIONS DATED MAY 4, 1958 SHALL APPLY TO THE CONSTRUCTION OF THIS PROJECT.
20. THE CONTRACTOR SHALL OBTAIN THE STIPENDING FOR EXIST'G IN-GRADE PAVEMENT AROUND THE LOMITA BLDG. DIST. OFFICE.

NOTE:
 GRADES TO WHICH THIS IMPROVEMENT IS TO BE CONSTRUCTED ARE SHOWN ON PLANS AND PROFILE. GRADE POINTS FOR TOP OF CURB, CENTER LINE OF STREET, OR CENTER LINE OF ALLEYS ARE SHOWN BY CIRCLES ON PROFILES AT ALL POINTS BETWEEN DESIGNATED POINTS. THE GRADE SHALL BE ESTABLISHED SO AS TO CORRESPOND TO A STRAIGHT LINE BEYOND SAID DESIGNATED POINTS.
 ELEVATIONS ARE IN FEET ABOVE U.S.C. & G.S. SEA LEVEL DATUM OF 1929.
 THIS DRAWING AND THE DATA HEREON ARE HEREBY MADE A PART OF THE SPECIFICATIONS.
 WORK SHALL BE CONSTRUCTED ACCORDING TO SPECIFICATIONS ON FILE IN THE OFFICE OF THE COUNTY ENGINEER AND SHALL BE PROSECUTED ONLY IN THE PRESENCE OF THE COUNTY ENGINEER.
 BEFORE WORK CAN BE STARTED, THE CONTRACTOR MUST OBTAIN A PERMIT TO EXCAVATE IN THE COUNTY ENGINEER'S OFFICE FROM THE L.A. COUNTY SOAB DEPT., DIV. 4, AND MAKE A DEPOSIT WITH THE COUNTY ENGINEER, ROOM 254 MAIN AMERICAN BUILDING, 338 SO. BROADWAY SUITE 1100 THE COST OF CONSTRUCTION INSPECTION AND RECORD PLANS.
 APPROVAL OF THE PLAN BY THE COUNTY OF LOS ANGELES DOES NOT CONSTITUTE A REPRESENTATION AS TO THE ACCURACY OF THE LOCATION OF OR THE EXISTENCE OR NON EXISTENCE OF ANY UNDERGROUND UTILITY PIPE, OR STRUCTURE WITHIN THE LIMITS OF THE PROJECT THE PROPERTY TO ALL DEPTHS.
 IF WORK IS TO BE DONE BY A STATE HIGHWAY, A PERMIT MUST BE OBTAINED FROM THE STATE OF CALIFORNIA, DIVISION OF HIGHWAYS, 120 SOUTH BRIDGE STREET.

ENGINEERING SERVICE CORPORATION
 1127 W. WASHINGTON BLVD.
 LOS ANGELES 15, CALIF. **REG. 9-7281**

REVISIONS			
NO.	DATE	BY	DESCRIPTION

TRACED BY *ALICE HELGERT*
 DES'G'D BY *BOWMAN*
 CK'D BY *BOWMAN*
 SUBMITTED *PRIO*

SUB STRUCTURES OK'D			
W. O. NO.	DWG. NO.	DATE	SCALE
668-28-75-30		APRIL 1959	AS NOTED

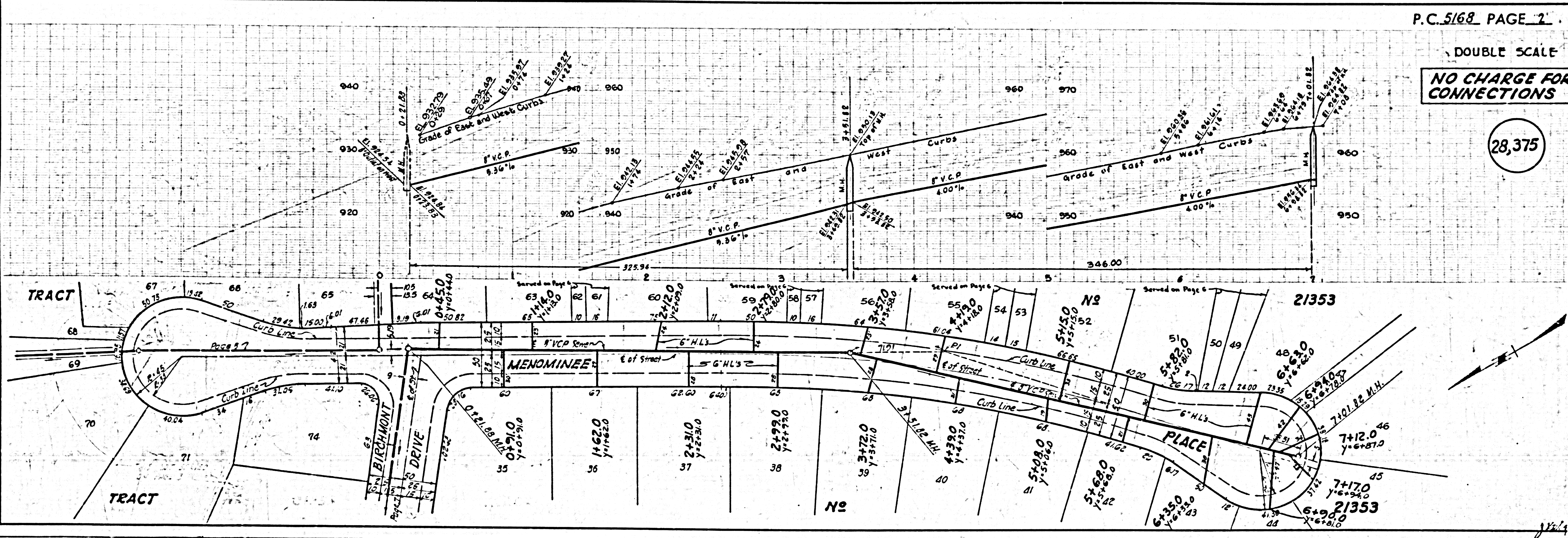
COUNTY OF LOS ANGELES, CALIFORNIA
 APPROVED, JOHN A. LAMBE, COUNTY ENGINEER
 APPROVED, C.E. COMPTON, CHIEF ENGINEER
 BY *E. P. King* OFFICE ENGINEER
 CHECKED BY *E. P. King* OFFICE ENGINEER
 OFFICE OF COUNTY ENGINEER, REG. C.E. NO. 9406

P.C. 5168 PAGE 2

DOUBLE SCALE

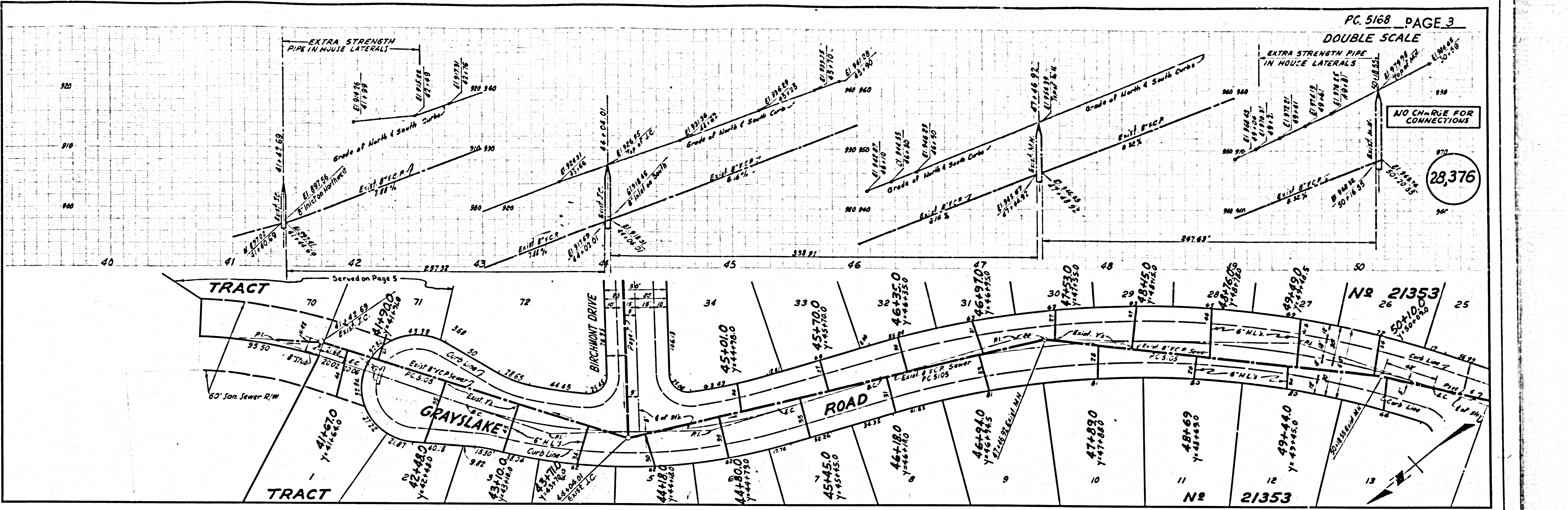
NO CHARGE FOR CONNECTIONS

(28,375)



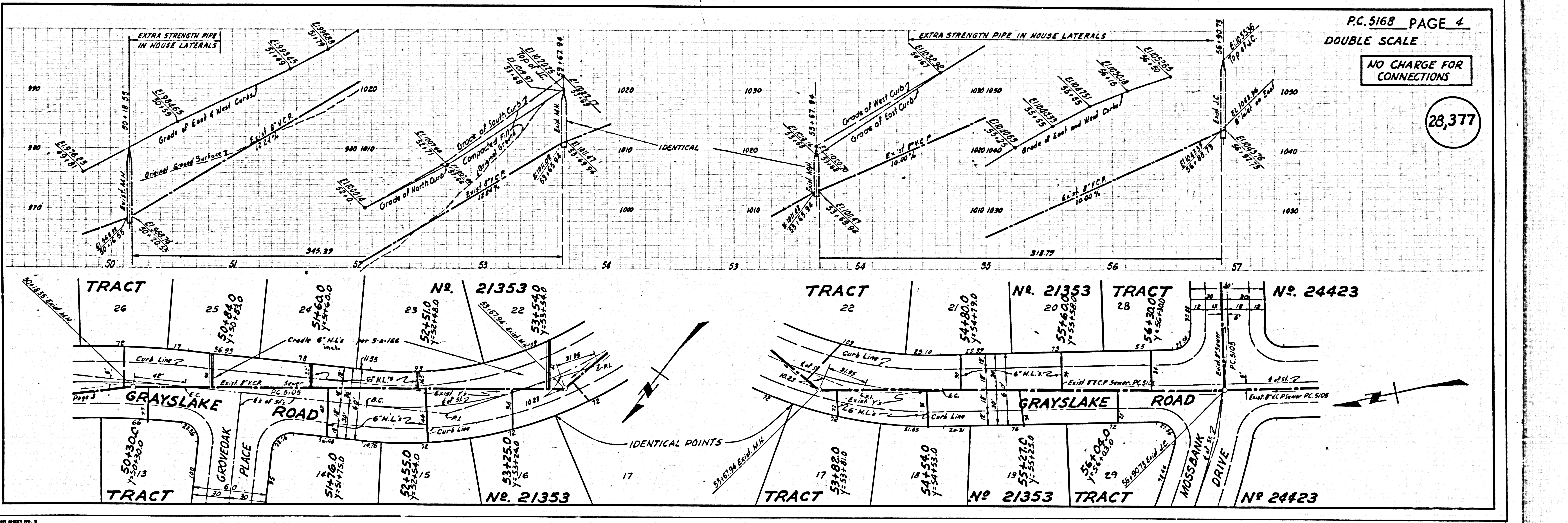
NO CHARGE FOR CONNECTIONS

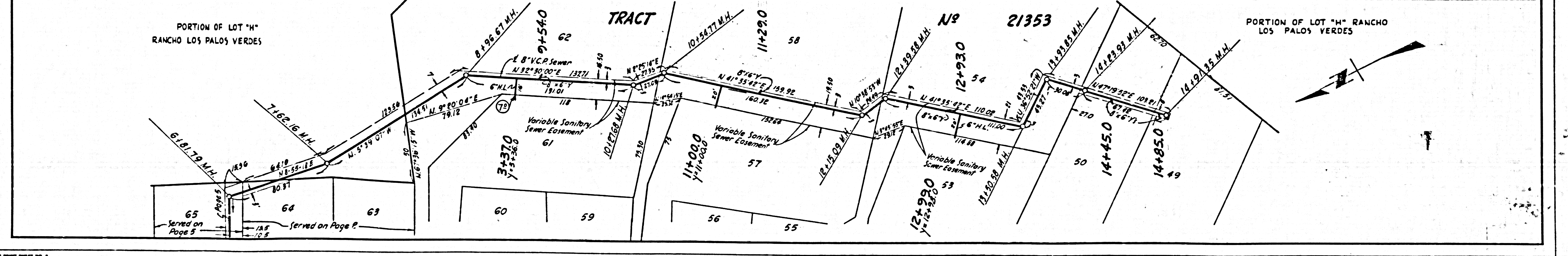
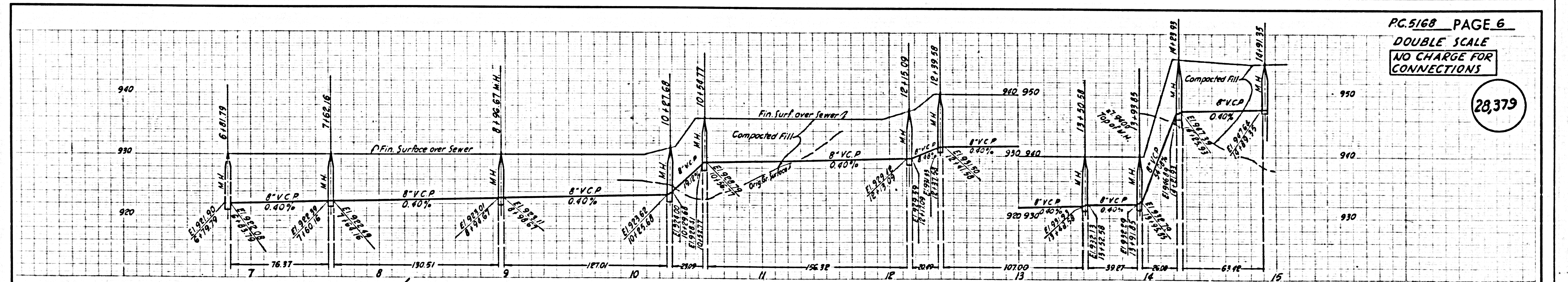
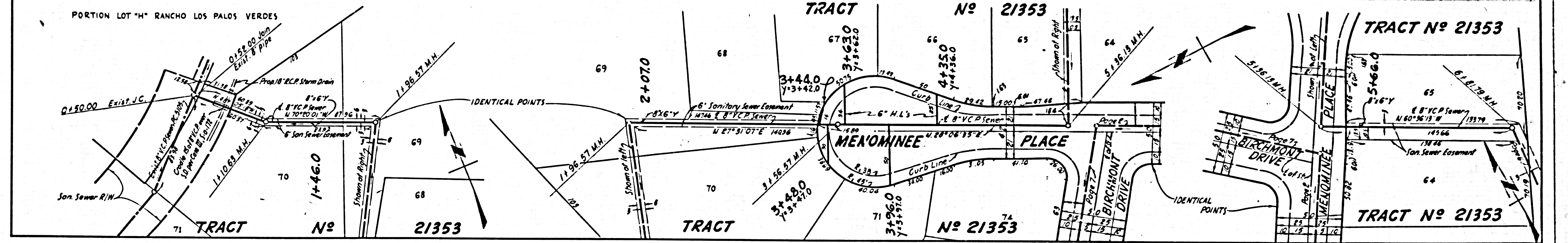
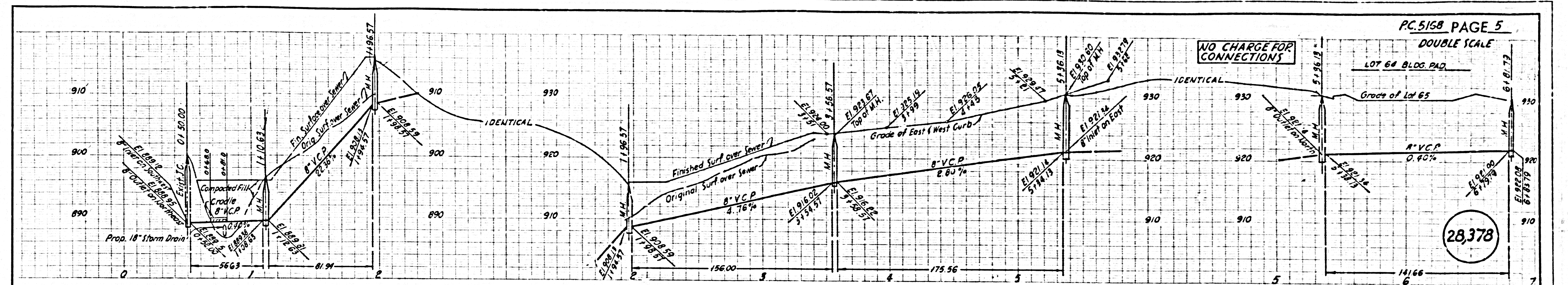
28,376



NO CHARGE FOR CONNECTIONS

28,377





PC 5168 PAGE 7
DOUBLE SCALE

NO CHARGE FOR CONNECTIONS

28,380

