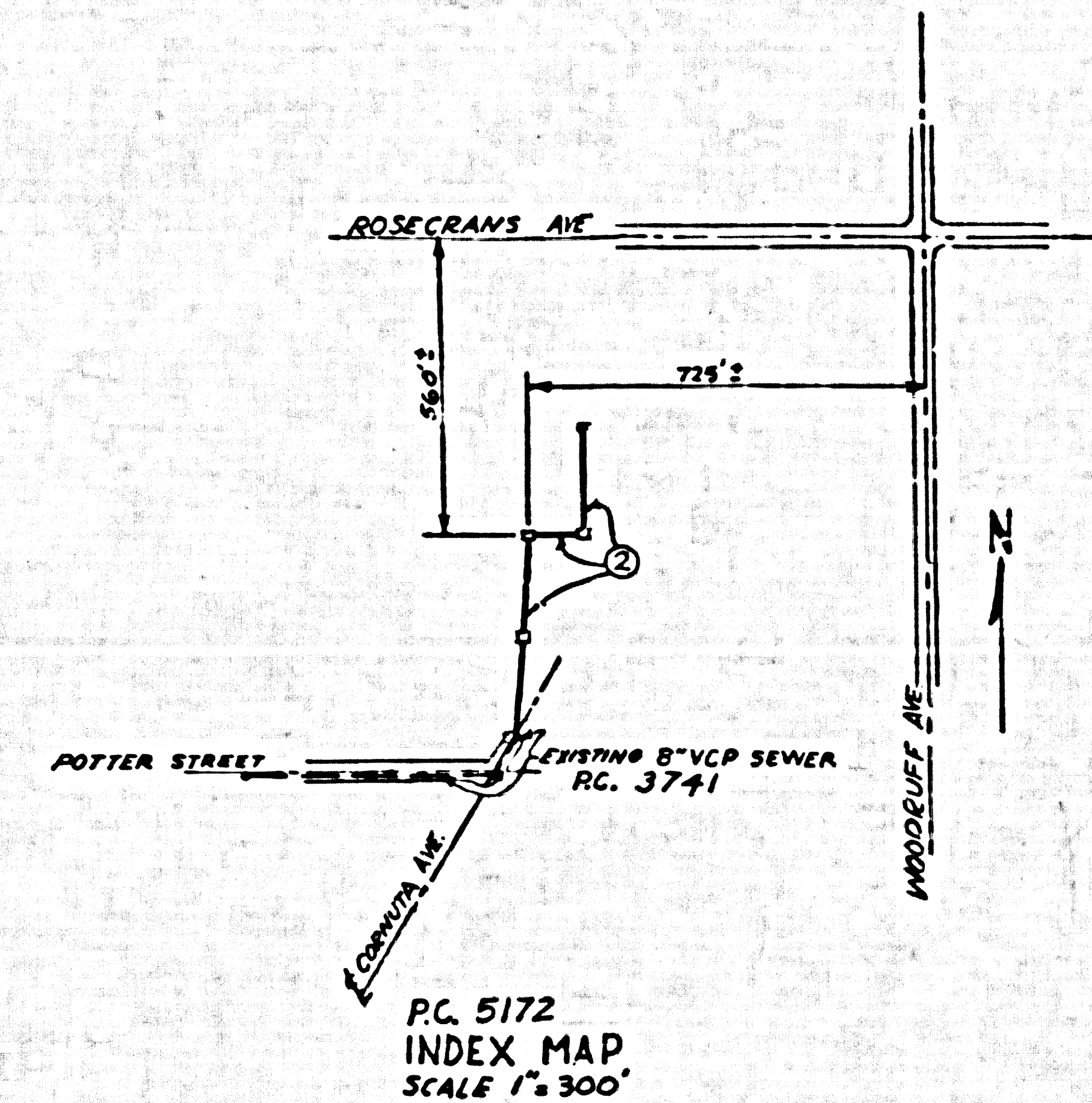


BELFLOWER BLDG. DIST. NO. 4.07

PROFILE ALIGNMENT AND GRADE OF P.C. 5172
 SANITARY SEWERS PAGE 1
 TO BE CONSTRUCTED IN
 SANITARY SEWER EASEMENT
 NORTH FROM CORNUTA AVENUE
 PRIVATE CONTRACT NO. 5172

W.S. 33
 1 SHEET, 2 PAGES
 SCALE: VERT. 1"=4' HORIZ. 1"=40' June 1959
 PREPARED IN THE OFFICES OF
 [Signature]
 REG. C. E. NO. 7818
 FOR LEGEND SEE PLAN NO. S-A-64

28,237



- NOTES:
1. PROFILE STAKES ON THE PROPERTY LINE OR PROPERTY LINES PRODUCED AT RIGHT ANGLES TO THE SEWER LINE AT THE CENTER LINE OF EACH MANHOLE.
 2. NO REPRESENTATIVE OF THE CITY ENGINEER WILL SURVEY OR LAY OUT ANY PORTION OF THE WORK.
 3. THE OWNER OR HIS AUTHORIZED REPRESENTATIVE SHALL FURNISH THE CITY ENGINEER WITH GRADE SHEETS AND STATIONING FOR ALL HOUSE LATERALS AND Y BRANCHES AND SHALL PROVIDE STAKES FOR THEM AT THEIR PROPER LOCATIONS WITH 8x4 TYPING PLANTY MARKERS. A CHANGE IN LOCATION SHALL BE REQUESTED IN WRITING BY THE OWNER OR HIS REPRESENTATIVE.
 4. WHENEVER THE OWNER SHALL MAKE ANY CHANGE IN THE PROFILE OR GRADE OF THE SEWER LINE, HE SHALL SUBMIT THE SAME TO THE CITY ENGINEER FOR APPROVAL.
 5. NO REVISIONS SHALL BE MADE IN THESE PLANS WITHOUT THE APPROVAL OF THE CITY ENGINEER.
 6. USE STANDARD MANHOLE FRAMES AND COVERS, S-A-122.
 7. USE STANDARD STRENGTH PIPE SIZES S-A-122.
 8. USE CEMENT MORTAR OR "WEDGE-LOCK" OR "SPUR-ON" FOR ALL V.C.P. JOINTS PER SPECS. SECS. 28 & 29.
 9. RESURFACE ALL TRUCKS WITHIN 10' OF AREA TO BE BY L.A. COUNTY ROAD DEPT. OR CALIF. STATE HIGHWAY. IF BOUNDARIES IN ACCORDANCE WITH THESE PLANS.
 10. SCALE FOUR FEET OF SEWER AT POINTS OF INTERFERENCE WITH POLES, CARS, ETC. S-A-175.
 11. ALL STRUCTURES SHALL BE IN ACCORDANCE WITH THE SPECIFICATIONS OF THE CITY ENGINEER.
 12. ALL STRUCTURES SHALL BE IN ACCORDANCE WITH THE SPECIFICATIONS OF THE CITY ENGINEER.
 13. MANHOLE JOINTS IN UNIMPROVED RIGHTS-OF-WAY TO BE 12" MIN. WITH 1" FINISHED GRADE.
 14. THE CONTRACTOR SHALL NOTIFY THE CONSTRUCTION SUPERVISOR BY TELEPHONE, MAIL OR BY LETTER, AT LEAST TWENTY-FOUR HOURS BEFORE STARTING ANY WORK UNDER THIS CONTRACT.
 15. ENCASE 8" V.C.P. PER S-A-175, CASE III WHERE COVER IS LESS THAN 4 FEET.

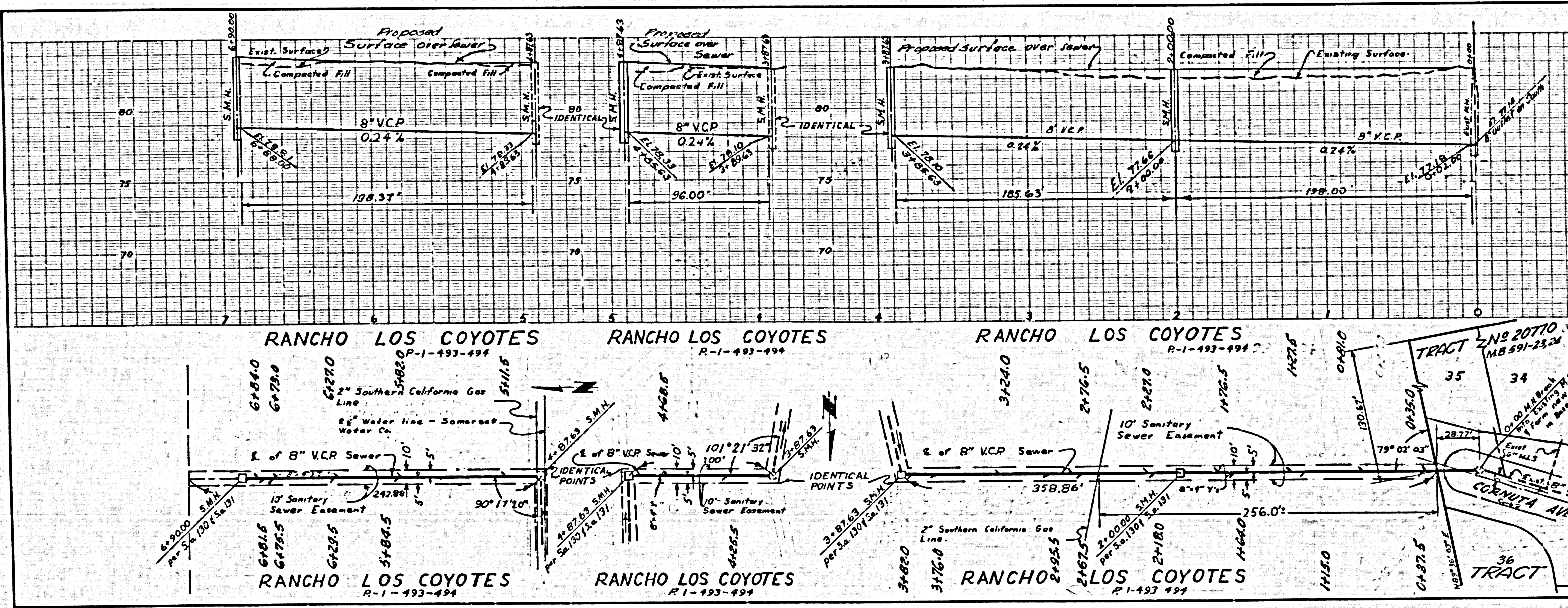
P.C. 5172
 INDEX MAP
 SCALE 1"=300'

NO CHARGE FOR CONNECTIONS
 [Signature]

B.M. ROAD DEPT. SY 694 S.F.L.E
 INTERSECTION OF WASHINGTON ST. AND
 WOODRUFF AVE. NORWALK QUAD 1955.
 ELEVATION 81.081

NOTE:
 GRADES TO WHICH THIS IMPROVEMENT IS TO BE CONSTRUCTED ARE SHOWN ON PLANS AND PROFILE. GRADE POINTS FOR TOP OF CURBS, CURB IN LINE OF STREETS OR FRONT LINE OF ALLEYS ARE SHOWN BY CIRCLES ON PROFILES. AT ALL POINTS BETWEEN MANHOLE POINTS.
 ELEVATIONS ARE IN FEET ABOVE U.S.C. & G.S. SEA LEVEL DATUM OF 1929.
 THIS DRAWING AND THE DATA HEREON ARE HEREBY MADE A PART OF THE SPECIFICATIONS.
 WORK SHALL BE CONSTRUCTED ACCORDING TO SPECIFICATIONS ON FILE IN THE OFFICE OF THE CITY ENGINEER AND SHALL BE PROSECUTED ONLY IN THE PRESENCE OF THE CITY ENGINEER.
 BEFORE WORK CAN BE STARTED, THE CONTRACTOR MUST OBTAIN A PERMIT TO OCCUPY ALL CITY STREETS FROM THE L.A. COUNTY ROAD DEPT., DISTRICT OFFICE NO. 4, AND MAKE A DEPOSIT WITH THE CITY OF BELFLOWER PER S-A-122.
 APPROVAL OF THIS PLAN BY THE CITY OF BELFLOWER DOES NOT CONSTITUTE A REPRESENTATION AS TO THE ACCURACY OF THE LOCATION OF OR THE EXISTENCE OR NON-EXISTENCE OF ANY UNDERGROUND UTILITY PIPES, OR STRUCTURE WITHIN THE LIMITS OF THIS PROJECT. THE OWNER SHALL BE RESPONSIBLE FOR OBTAINING ALL NECESSARY PERMITS AND FOR THE PROTECTION OF ALL UTILITIES, 120 SOUTH BRIDGE STREET.
 CITY OF BELFLOWER, CALIFORNIA
 APPROVED: JOHN A. LAMME, CITY ENGINEER
 APPROVED: E. R. COMPTON, CHIEF ENGINEER
 BY [Signature] ASSISTANT SANITATION ENGINEER
 BY [Signature] OFFICE ENGINEER
 CHECKED BY [Signature] 10-1-59
 OFFICE OF CITY ENGINEER, REG. C. E. NO. 3456
 SUBMITTED BY: [Signature] 2-22-59
 LOUCERITOS REGIONAL ENGINEER, REG. C. E. NO. 3871

P.C. 5172 PAGE 2



NO CHARGE FOR CONNECTIONS

28,238