

BENCH MARK.
 A STANDARD COUNTY SURVEYORS MONUMENT,
 METAL CONCRETE, 105.00 ELEV. 631.19, IS LOCATED
 105.00 FEET EAST OF THE WEST FACE OF POMONA BLVD.
 AND 15.00 FEET EAST OF THE EAST FACE OF VALLEY
 BLVD. IN A WELL PROTECTED BOX ON VALLEY
 RD. 15.00 FEET EAST OF COUNTY SURVEYORS MONUMENT
 1952 ADJUSTED ELEV. 684.191

NO CHARGE FOR CONNECTIONS
 W. H. Binnis 8-20-59

SAN DIMAS BLDG. DIST. NO. 10.

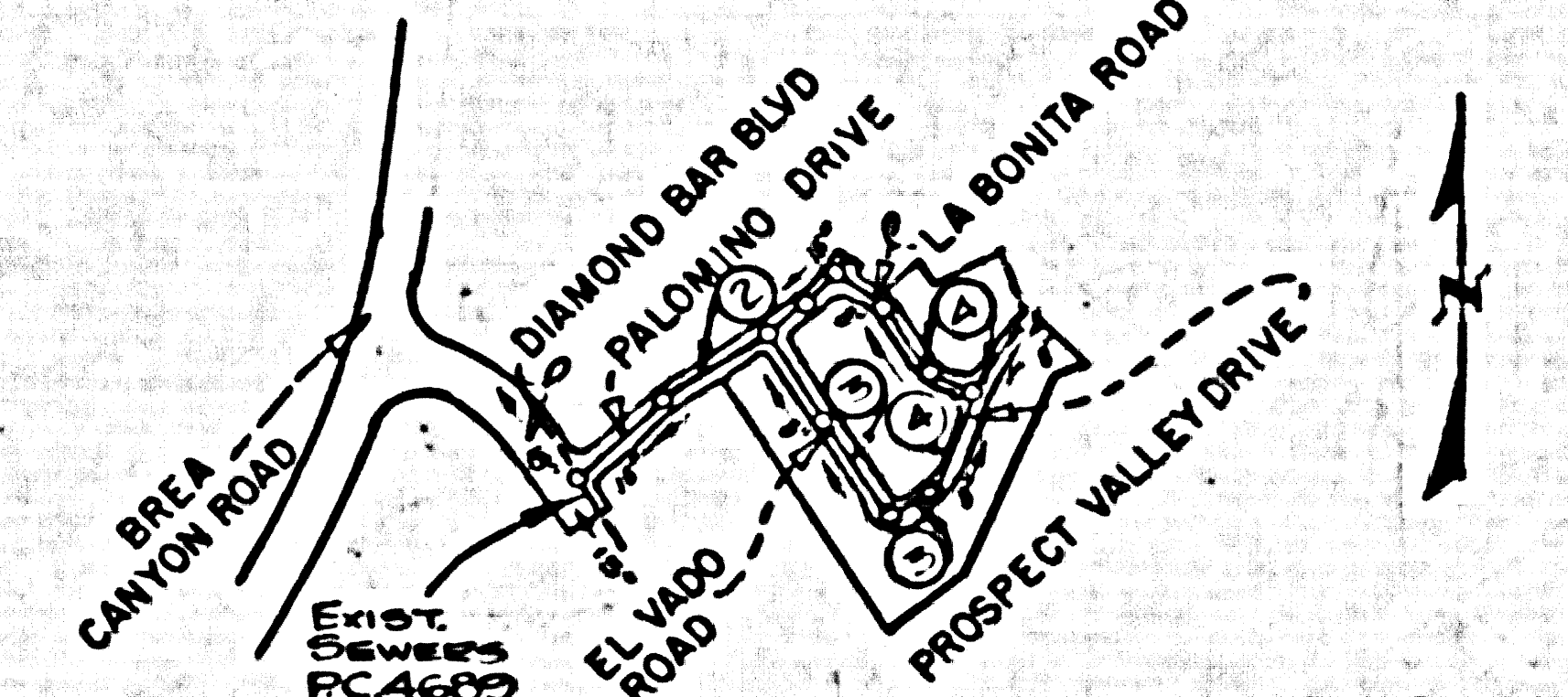
PROFILE ALIGNMENT AND GRADE OF **P.C. 5179**
SANITARY SEWERS PAGE 1
 TO BE CONSTRUCTED IN **JN. 0351.08**

TRACT NO 24724
PRIVATE CONTRACT NO. 5179

W.S. 39
 2 SHEETS, 4 PAGES
 SCALE: VERT. 1"=4' HORIZ. 1"=40'
JUNE, 1959 (28,233)

PREPARED IN THE OFFICE OF
BAKER, DUFFORD AND ASSOC.
 632 N. 1ST STREET, AVENUE
 P.O. BOX 1000
 P.O. BOX 1000
 P.O. BOX 1000

- NOTES:**
1. PROVIDE STAKES ON THE PROPERTY LINE OR PROPERTY LINE PRODUCE AT RIGHT ANGLES TO THE SEWER LINE AT THE CENTER LINE OF EACH MANHOLE.
 2. NO REPRESENTATIVE OF THE COUNTY ENGINEER WILL SURVEY OR LAY OUT ANY PORTION OF THE WORK.
 3. THE OWNER OR HIS AUTHORIZED REPRESENTATIVE SHALL FURNISH THE COUNTY ENGINEER WITH GRADE SHEETS AND STATIONING FOR ALL HOUSE LATERALS AND Y BRANCHES AND SHALL FURNISH STAKES FOR TIES AT THEIR PROPER LOCATIONS WITH STATIONING PLANNED MARKS. ANY CHANGE IN LOCATION SHALL BE REQUESTED IN WRITING BY THE OWNER OR HIS REPRESENTATIVE.
 4. THE PRIVATE ENGINEER SHALL FURNISH THE HOUSE LATERAL DEPTH AT THE PROPERTY LINE BELOW THE TOP OF CURB ELEVATION FOR EACH HOUSE LATERAL ON THE "GRADE SHEET".
 5. NO REVISIONS SHALL BE MADE IN THESE PLANS WITHOUT THE APPROVAL OF THE COUNTY ENGINEER.
 6. USE STANDARD MANHOLE FRAMES AND COVERS, S-117.
 7. USE STANDARD STRENGTH PIPE EXCEPT AS NOTED.
 8. USE STANDARD MANHOLE OR "WIDEN-LOCK" OR "TRIP-GRAB" FOR ALL V.C.P. JOINTS PER SPEC., SEC. 8 & 9.
 9. SUBMIT ALL TRENCH WITHIN PAVED AREA TO THE L.A. COUNTY ROAD DEPT. OR CALIF. STATE HIGHWAY DEPARTMENT IN ACCORDANCE WITH PERMITS.
 10. EXPOSE POLE FEET OF SEWER AT POINTS OF INTERFERENCE WITH POLES, CASE III, S-172.
 11. HOUSE LATERALS TO BE CONSTRUCTED WITH INVERTS AT PROPERTY LINE 6" BELOW CURB CHAIN EXCEPT AS NOTED.
 12. ALL STRUCTURES SHALL BE BRICK SEWER STRUCTURES, S-104.
 13. FOR ALLOWABLE LEAKAGE TEST USE FORMULA NO. 1, SPEC., SEC. 8A.
 14. MANHOLE TOPS ON UNIMPROVED RIGHTS-OF-WAY TO BE SIX INCHES ABOVE FINISHED GRADE.
 15. THE CONTRACTOR SHALL NOTIFY THE CONSTRUCTION & STORM DRAIN DIVISION BY TELEPHONE, MADISON 9-674, EXT. 242, AT LEAST THIRTY-FOUR HOURS BEFORE STARTING ANY WORK UNDER THIS CONTRACT.
 16. STANDARD SPECIFICATIONS DATED MAY 15, 1958 APPLY IN THE CONSTRUCTION OF THIS PROJECT.

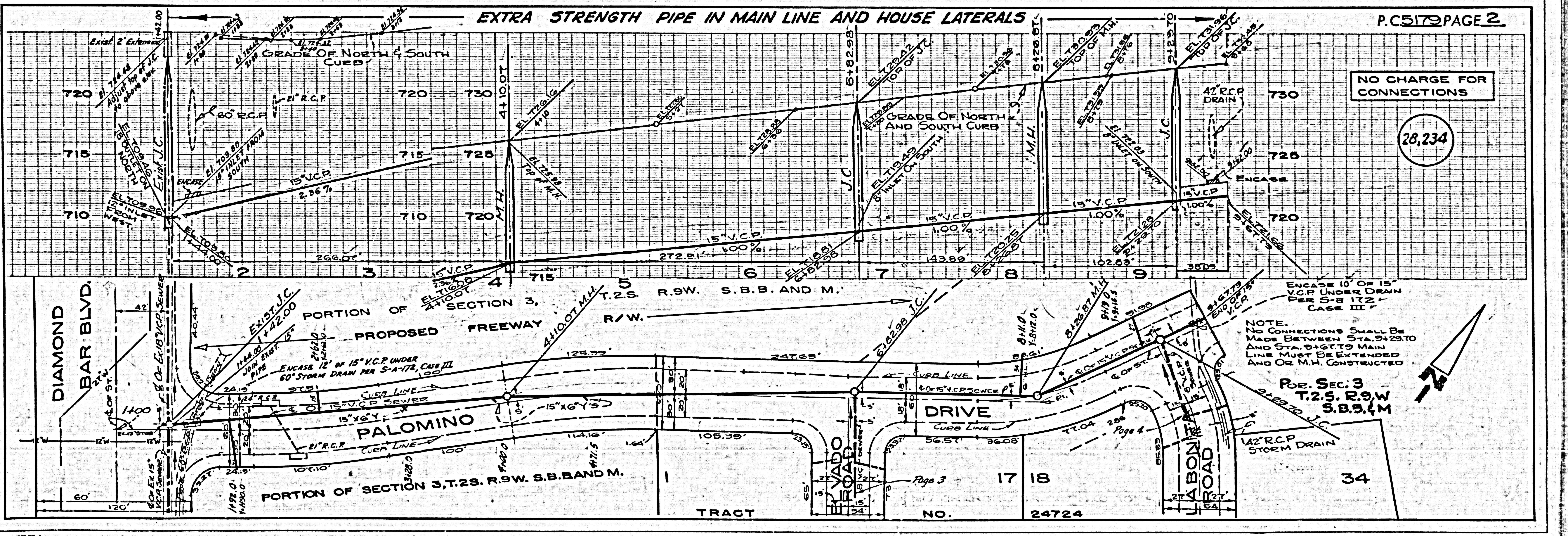


INDEX MAP
 Scale 1"=600'
TRACT NO 24724

NOTE:
 GRADES TO WHICH THIS IMPROVEMENT IS TO BE CONSTRUCTED AND SHOWN ON PLANS AND PROFILES, GRADE POINTS FOR TOP OF CURB, CENTER LINE OF STREET, OR CENTER LINE OF ALLEYS ARE SHOWN BY CIRCLES ON PROFILES AT ALL POINTS BETWEEN DESIGNATED POINTS. THE GRADE SHALL BE ESTABLISHED SO AS TO CONFORM TO A STRAIGHT LINE BETWEEN SAID DESIGNATED POINTS.
 ELEVATIONS ARE IN FEET ABOVE U.S.C. & G.S. SEA LEVEL, DATUM OF 1929.
 THIS DRAWING AND THE DATA HEREON ARE HEREBY MADE A PART OF THE SPECIFICATIONS.
 WORK SHALL BE CONSTRUCTED ACCORDING TO SPECIFICATIONS ON FILE IN THE OFFICE OF THE COUNTY ENGINEER AND SHALL BE PROSECUTED ONLY IN THE PRESENCE OF THE COUNTY ENGINEER.
 BEFORE WORK CAN BE STARTED, THE CONTRACTOR MUST OBTAIN A PERMIT TO EXCAVATE BY COUNTY ENGINEER FROM THE L.A. COUNTY ROAD DEPT., DISTRICT OFFICE NO. 7, AND MAKE A DEPOSIT WITH THE COUNTY ENGINEER, ROOM 334 SAN ANTONIO BUILDING, 238 SO. BROADWAY, SUFFICIENT TO COVER THE COST OF CONSTRUCTION INSPECTION AND RECORD PLANS.
 APPROVAL OF THIS PLAN BY THE COUNTY OF LOS ANGELES DOES NOT CONSTITUTE A REPRESENTATION AS TO THE ACCURACY OF THE LOCATION OF OR THE EXISTENCE OR NON-EXISTENCE OF ANY UNDERGROUND UTILITY PIPE, OR STRUCTURE WITHIN THE LIMITS OF THIS PROJECT. THIS NOTE APPLIES TO ALL PAGES.
 IF WORK IS TO BE DONE IN A STATE HIGHWAY, A PERMIT MUST BE OBTAINED FROM THE STATE OF CALIFORNIA, DIVISION OF HIGHWAYS, 128 SOUTH SPRING STREET.

COUNTY OF LOS ANGELES, CALIFORNIA

APPROVED, JOHN A. LAMBE, COUNTY ENGINEER
 APPROVED, C.E. COMPTON, CHIEF ENGINEER
 BY *C.E. Compton* BY *J.A. Lambe*
 ASST. SANITATION ENGINEER OFFICE ENGINEER
 CHECKED BY *R.F. Mering 8-21-59*
 OFFICE OF COUNTY ENGINEER, 800 S. W. 11636



NO CHARGE FOR CONNECTIONS

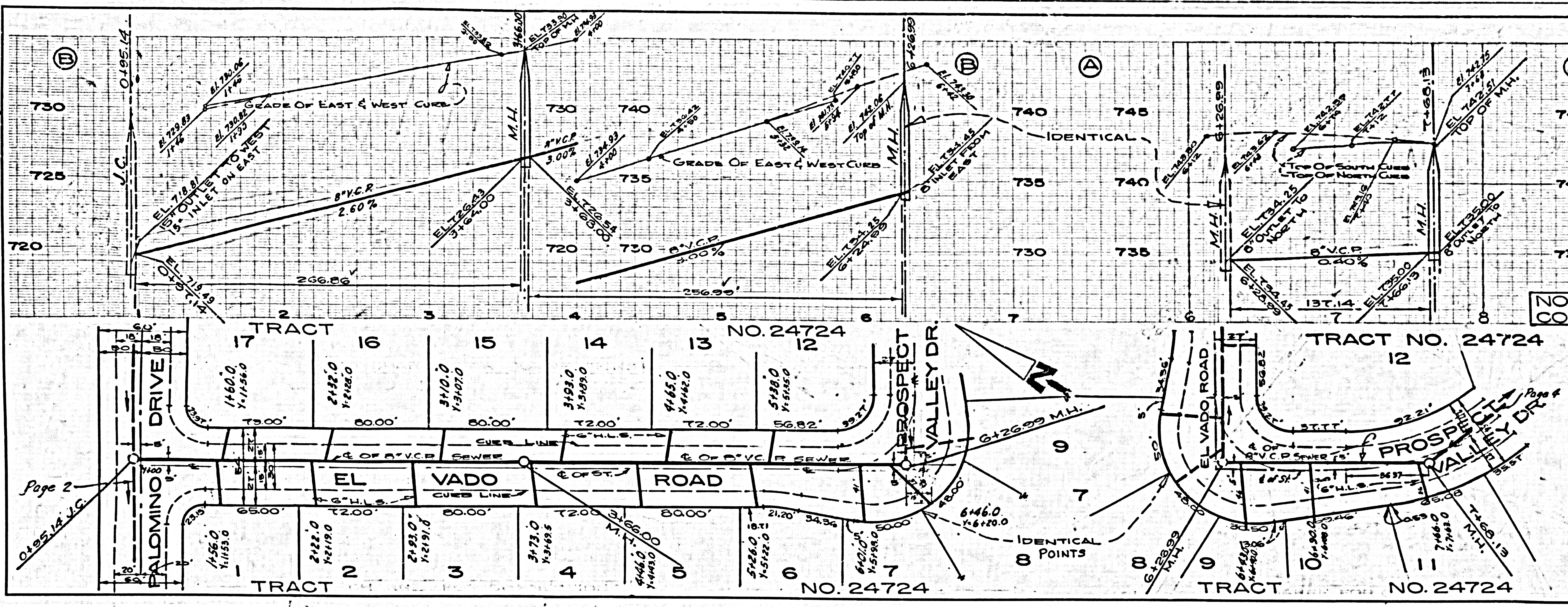
(28,234)

NOTE:
 NO CONNECTIONS SHALL BE MADE BETWEEN STA. 9+29.70 AND STA. 9+67.79 MAIN LINE MUST BE EXTENDED AND OR M.H. CONSTRUCTED

Por. Sec. 3
T.2.S. R.9W
S.B.5.4M

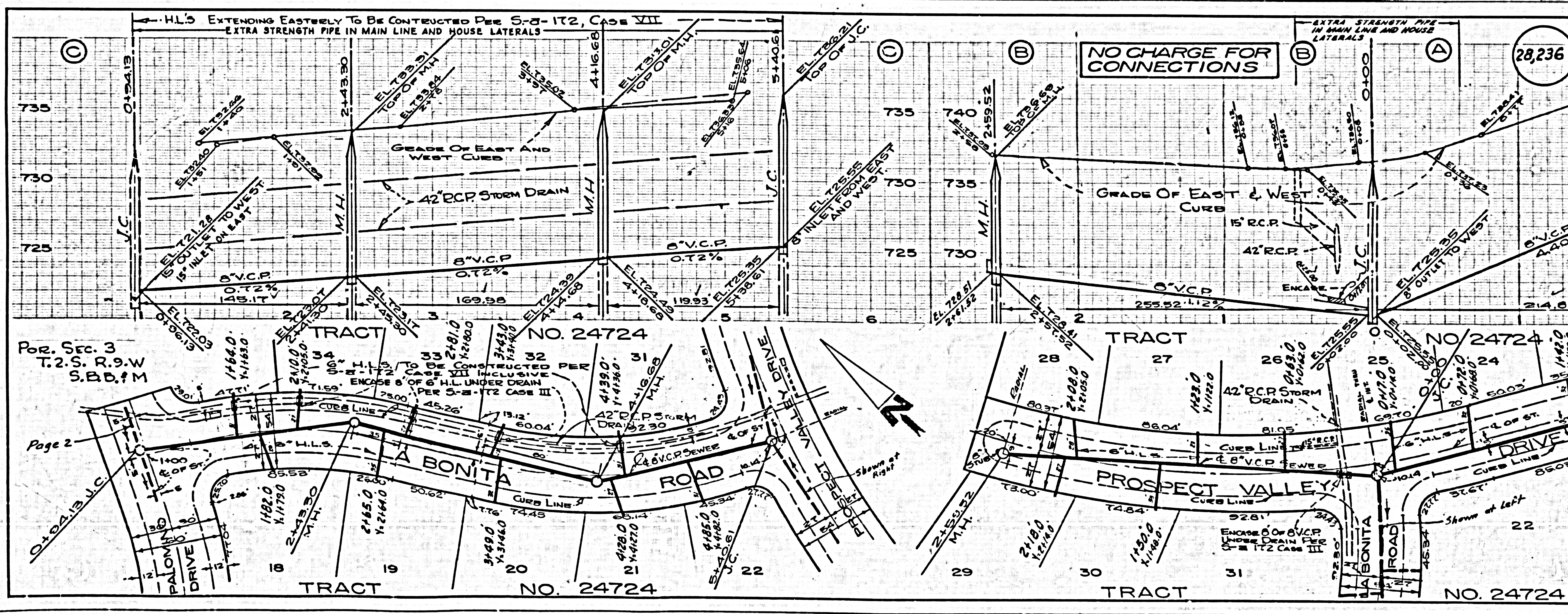
U.S.G.P. 1958-59, 1:250,000, 1958-59, 1:250,000, 1958-59, 1:250,000

28,735



NO CHARGE FOR CONNECTIONS

28,236



NO CHARGE FOR CONNECTIONS

SEWERED BY SEWER IN EL VADO RA-14823

A. E. M. H.