

INDEX MAP
TRACT NO 24930
P.C. 5181
Scale: 1"=200'

B.M. 54.1492 L.I.T. in W. end of Conc. Hoodwell 2.30' N. and 1.45' W. of Artasia and Palo Verde Ave. Elev. 66.078 (Bellflower Quads).

BELFLOWER BLDG. DIST. NO. 407

- NOTES:
- PROVIDE STAKES ON THE PROPERTY LINE OR PROPERTY LINES PRODUCED AT RIGHT ANGLES TO THE SEWER LINE AT THE CENTER LINE OF EACH MANHOLE.
 - NO REPRESENTATIVE OF THE CITY ENGINEER WILL BE ON SITE AT ANY PORTION OF THE WORK.
 - THE OWNER OR HIS AUTHORIZED REPRESENTATIVE SHALL FURNISH THE CITY ENGINEER WITH GRAB SHEETS AND STATION FOR ALL HOUSE LATERALS AND T-BRANCHES AND SHALL PROVIDE STAKES FOR THEM AT THEIR PROPER LOCATIONS WITH STATIONING PLAINLY MARKED. ANY CHANGE IN LOCATION SHALL BE REQUESTED IN WRITING BY THE OWNER OR HIS REPRESENTATIVE.
 - NO DRIVEWAYS SHALL BE MADE IN THESE PLANS WITHOUT THE APPROVAL OF THE CITY ENGINEER.
 - USE STANDARD MANHOLE FRAMES AND COVERS, S-A-117.
 - USE STANDARD MANHOLE FRAMES.
 - USE CURBED MORTAR "WEDGE LOCK" OR SPEED CURB FOR ALL UTILITY CURBS, PIPE, AND MANHOLES.
 - RESURFACE ALL TRUCKS WITHIN PAVED AREA TO MEET L.A. COUNTY ROAD DEPT. OR CALIF. STATE HIGHWAY DEPT. STANDING HEIGHTS IN ACCORDANCE WITH PERMITS.
 - INDICATE POSITIVE FEET OF SEWER AT POINTS OF INTERFERENCE WITH POLES, CASE # S-A-172.
 - HOUSE LATERALS TO BE CONSTRUCTED WITH SLOPES AS PROPERTY LINE. 6" V.C.P. SHOW CURB GRAB SHEET AS NOTED.
 - ALL STRUCTURES SHALL BE BUILT TO MEET SPECIFICATIONS, S-A-304.
 - FOR ALLOWABLE SLOPES USE THE FORMULA: $\frac{1}{2} \frac{1}{1000}$ FEET PER 100 FEET.
 - MANHOLE TOPS IN UNIMPROVED AREAS TO BE 6" ABOVE FINISHED GRADE.
 - THE CONTRACTOR SHALL NOTIFY THE CONSTRUCTION AND STORM DRAIN DIVISION BY TELEPHONE, MAIL OR 5-4462, EXT. 362, AT LEAST 24 HOURS BEFORE STARTING ANY WORK UNDER THIS CONTRACT.
 - THE PRIVATE ENGINEER SHALL FURNISH THE HOUSE LATERAL DEPTH AT THE PROPERTY LINE BELOW THE TOP OF CURB ELEVATION FOR EACH HOUSE LATERAL BY THE GRADE SHEET.

NO CHARGE FOR CONNECTIONS
S. H. HICKMAN 8-4-59

PROFILE ALIGNMENT AND GRADE OF P.C. 5181
SANITARY SEWERS PAGE 1
TO BE CONSTRUCTED IN

TRACT NO 24930
PRIVATE CONTRACT NO. 5181
W.S. 53

1 SHEET, 2 PAGES
SCALE: VERT. 1"=4'
HORIZ. 1"=40'
MAY, 1959
PREPARED IN THE OFFICES OF
KENNERER ENGINEERING CO. INC.
BY Robert R. Flors
E.G.C. NO. 11349
FOR LEGEND SEE PLAN NO. S-A-64

NOTE: GRADES TO WHICH THE IMPROVEMENT IS TO BE CONSTRUCTED ARE SHOWN ON PLANS AND PROFILES. GRADE POINTS FOR TOP OF CURBS, CENTER LINE OF STREETS, OR CENTER LINE OF ALLEYS ARE SHOWN BY CIRCLES ON PROFILES. AT ALL POINTS BETWEEN REGULAR POINTS THE GRADE SHALL BE ESTABLISHED TO BE TO CORRESPOND TO A STRAIGHT LINE DRAWN BETWEEN SAID REGULAR POINTS.

SEWERAGE ARE IN FEET ABOVE U.S.C. & G.S. MEAN SEA LEVEL, 1929.

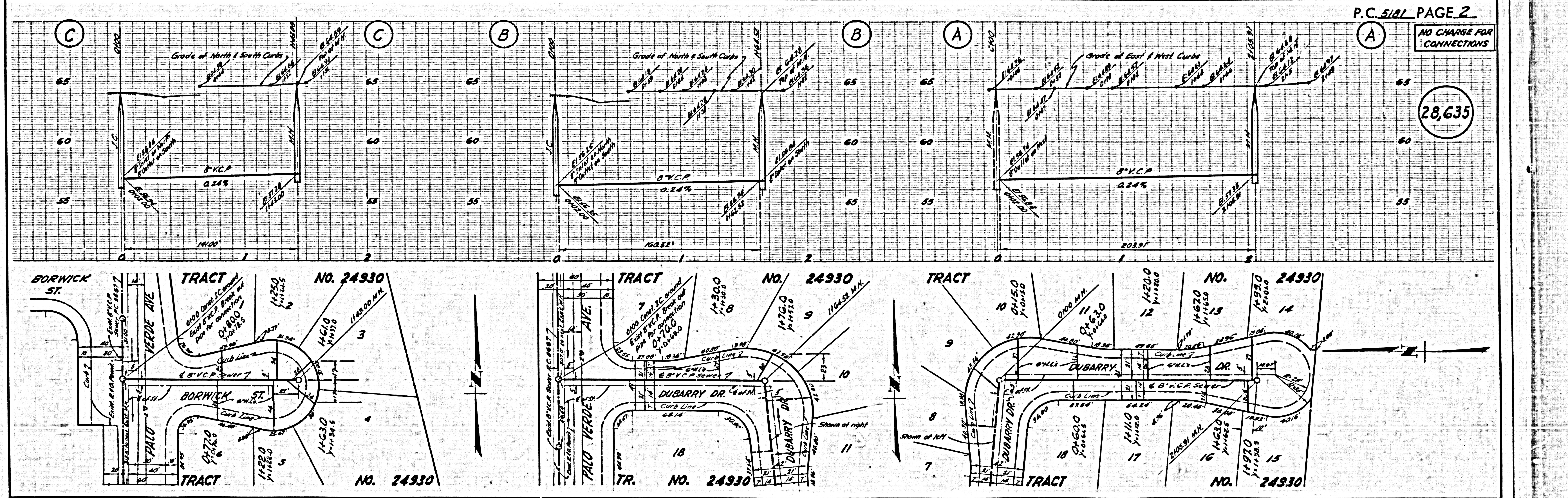
THIS DRAWING AND THE DATA HEREON ARE HEREBY MADE A PART OF THE SPECIFICATIONS. BEFORE WORK CAN BE STARTED, THE CONTRACTOR MUST OBTAIN A PERMIT TO EXCAVATE IN CURB CUTS FROM THE L.A. COUNTY ROAD DEPT., DIST. 4, AND MAKE A REPORT WITH THE CITY OF BELFLOWER.

APPROVAL OF THIS PLAN BY THE CITY OF BELFLOWER DOES NOT CONSTITUTE A REPRESENTATION AS TO THE ACCURACY OF THE LOCATION OF OR THE EXISTENCE OR NON-EXISTENCE OF ANY UNDERGROUND UTILITY PIPE, OR STRUCTURE WITHIN THE LIMITS OF THIS PROJECT. THE NOTE APPLIES TO ALL PAGES.

IF WORK IS TO BE DONE IN A STATE HIGHWAY, A PERMIT MUST BE OBTAINED FROM THE STATE OF CALIFORNIA, DIVISION OF HIGHWAYS, 126 SOUTH SHAWNEE STREET.

CITY OF BELFLOWER, CALIFORNIA
APPROVED, JOHN A. LAMBE, CITY ENGINEER
APPROVED, C. E. CAMPBELL, CHIEF ENGINEER
GO. SAN. DIST. NO. 2
BY C. E. Campbell, ASST. SANITATION ENGINEER
BY C. E. Campbell, OFFICE ENGINEER
CHECKED BY R. T. Keeling 8-11-59
OFFICE OF CITY ENGINEER, BELLFLOWER, CALIF. NO. 11636

SUBMITTED BY: Robert R. Flors 8-7-59
LOS ANGELES REGIONAL ENGINEER REG. C.E. NO. 3871



P.C. 5181 PAGE 2

NO CHARGE FOR CONNECTIONS

28,635