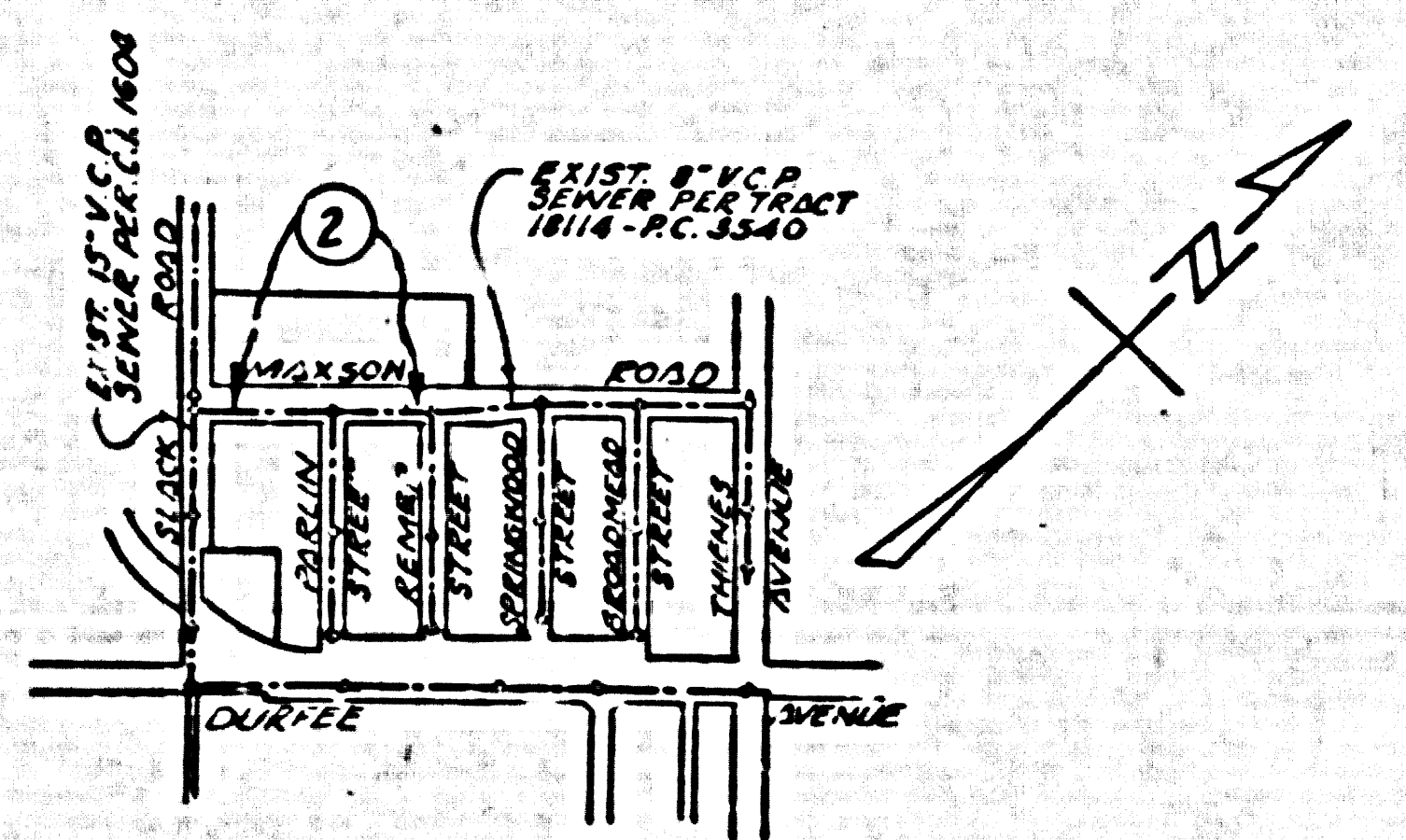


B.M. L&T. IN OLD CATCH BASIN 20' WEST OF W. OF DURFEE ROAD, 250' NORTH OF SLACK ROAD. WHITTIER QUAD S.Y. 1280 ELEV 241.00



INDEX MAP  
TRACT NO 24656  
SCALE: 1"=600'

TEMPLE CITY BLDG. DIST. NO. 52

- NOTES:
1. PROFILE STAKES ON THE PROPERTY LINE OR PROPERTY LINES PRODUCED AT RIGHT ANGLE TO THE SEWER LINE AT THE CENTER LINE OF EACH MANHOLE.
  2. NO REPRESENTATIVE OF THE COUNTY ENGINEER WILL SURVEY OR L.A. OUR ANY PORTION OF THE WORK.
  3. THE OWNER OR HIS AUTHORIZED REPRESENTATIVE SHALL FURNISH THE COUNTY ENGINEER WITH GRADE SHEETS AND STATIONING FOR ALL HOUSE LATERALS AND V BRANCHES AND SHALL PROVIDE STAKES FOR THEM AT THEIR PROPER LOCATIONS WITH STATIONING PLAINLY MARKED. ANY CHANGE IN LOCATION SHALL BE INDICATED BY THE OWNER OR HIS REPRESENTATIVE.
  4. THE PRIVATE ENGINEER SHALL FURNISH THE HOUSE LATERAL DEPTH AS THE PROPERTY LINE BELOW THE TOP OF CURB ELEVATION FOR EACH HOUSE LATERAL ON THE GRADE SHEET.
  5. NO REVISIONS SHALL BE MADE IN THESE PLANS WITHOUT THE APPROVAL OF THE COUNTY ENGINEER.
  6. USE STANDARD MANHOLE RINGS AND COVERS, 5-0-17, EXCEPT AS NOTED.
  7. USE STANDARD STRENGTH PIPE EXCEPT AS NOTED.
  8. USE CEMENT MORTAR OR "WEDGE-LOCK" OR "SPRING-RING" FOR ALL V.C.P. JOINTS PER SPEC'S, SECS. 36 & 37.
  9. REINFORCE ALL TRENCH WITHIN PAVED AREA TO MEET L.A. COUNTY ROAD DEPT. OR CALIF. STATE HIGHWAY REQUIREMENTS IN ACCORDANCE WITH PERMITS.
  10. SHOWS POLE PART OF SEWER AT POINTS OF INTERFERENCE WITH POLES, CASE NO. 5-0-173.
  11. HOUSE LATERALS TO BE CONSTRUCTED WITH INVERTS AT PROPERTY LINE 6" BELOW CURB GRADE EXCEPT AS NOTED.
  12. ALL STRUCTURES SHALL BE BRICK SEWER STRUCTURES, 5-0-104, EXCEPT AS NOTED.
  13. FOR ALLOWABLE LEAKAGE TEST USE FORMULA NO. 1, SPEC'S, SEC. 34.
  14. MANHOLE POLE IN UNIMPROVED AREAS TO BE SET 24" ABOVE FINISHED GRADE.
  15. THE CONTRACTOR SHALL NOTIFY THE CONSTRUCTION & SPERM DIVISION BY TELEPHONE, MADISON 5-24, EXT. 242, AT LEAST TWENTY-FOUR HOURS BEFORE STARTING ANY WORK UNDER THIS CONTRACT.
  16. LOT NO. 1 SERVED BY HOUSE CONNECTION NO. 3268. LOT NO. 2 SERVED BY HOUSE CONNECTION NO. 3269. LOT NO. 3 SERVED BY HOUSE CONNECTION NO. 3268.
  17. STANDARD SPECIFICATIONS DATED MAY 15, 1933 APPLY IN CONSTRUCTION OF THIS PROJECT.

PROFILE ALIGNMENT AND GRADE OF P.C. 5182  
SANITARY SEWERS PAGE 1  
TO BE CONSTRUCTED IN J.N. 0351.09

TRACT NO 24656

PRIVATE CONTRACT NO. 5182

W.S. 37

1 SHEETS, 2 PAGES

SCALE: VERT. 1"=4' HORIZ. 1"=40'

JUNE 1959

PREPARED IN THE OFFICES OF ROSENTHAL ENGINEERING CO.

28285

C. S. Rosenthal

REG. C. E. NO. 2403

FOR LEGEND SEE PLAN NO. S-A-64

NO CHARGE FOR CONNECTIONS  
C.S. Rosenthal 10-6-59

NOTES:  
GRADES TO WHICH THIS IMPROVEMENT IS TO BE CONSTRUCTED ARE SHOWN ON PLANS AND PROFILE. GRADE POINTS FOR TOP OF CURB, CENTER LINE OF STREETS, OR CENTER LINE OF ALLEYS ARE SHOWN BY CIRCLES ON PROFILES. AT ALL POINTS BETWEEN INDICATED POINTS THE GRADE SHALL BE RETAINED AS TO CENTER LINE BETWEEN INDICATED POINTS.  
ELEVATIONS ARE TO BE ABOVE M.S.C. & G.S. SEA LEVEL DATUM OF 1929.  
THE DRAWING AND THE DATA HEREON ARE HEREBY MADE A PART OF THE SPECIFICATIONS.  
WORK SHALL BE CONSTRUCTED ACCORDING TO SPECIFICATIONS ON FILE IN THE OFFICE OF THE COUNTY ENGINEER AND SHALL BE PROSECUTED ONLY IN THE PRESENCE OF THE COUNTY ENGINEER.  
BEFORE WORK CAN BE STARTED, THE CONTRACTOR MUST OBTAIN A PERMIT TO EXCAVATE IN COUNTY STREETS FROM THE L.A. COUNTY ROAD DEPT., DISTRICT OFFICE NO. 7, AND MAKE A DEPOSIT WITH THE COUNTY ENGINEER, ROOM 254 PCH AMERICAN BUILDING, 225 SO. BROADWAY SUFFICIENT TO COVER THE COST OF CONSTRUCTION INSPECTION AND RECORD PLANS.  
APPROVAL OF THIS PLAN BY THE COUNTY OF LOS ANGELES DOES NOT CONSTITUTE A REPRESENTATION AS TO THE ACCURACY OF THE LOCATION OR OF THE EXISTENCE OR NON-EXISTENCE OF ANY UNDERGROUND UTILITY PIPE, OR STRUCTURE WITHIN THE LIMITS OF THIS PROJECT. THIS NOTE APPLIES TO ALL PAGES.  
IF WORK IS TO BE DONE IN A STATE HIGHWAY, A PERMIT MUST BE OBTAINED FROM THE STATE OF CALIFORNIA, DIVISION OF HIGHWAYS, 129 SOUTH SPRING STREET.

COUNTY OF LOS ANGELES, CALIFORNIA

APPROVED, JOHN A. LAMBE, COUNTY ENGINEER

APPROVED, [Signature], DISTRICT ENGINEER

C. S. Rosenthal, ASST. SANITATION ENGINEER

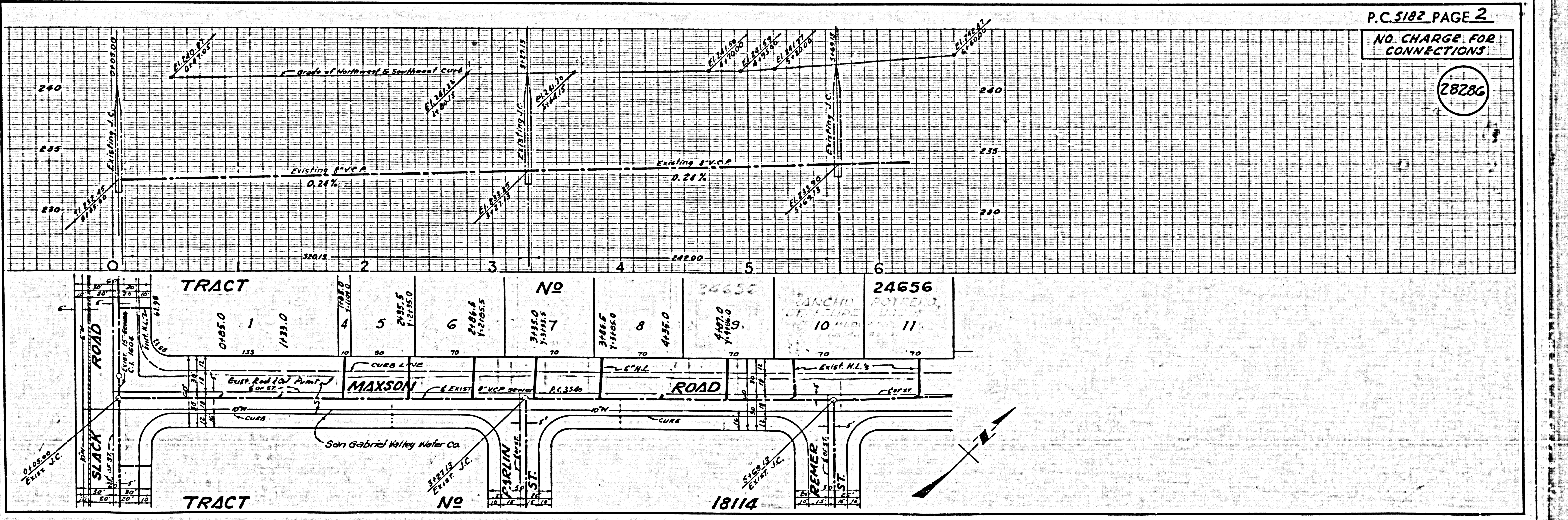
CHECKED BY [Signature] 10-7-59

OFFICE OF COUNTY ENGINEER, REG. C. E. NO. 1946

P.C. 5182 PAGE 2

NO CHARGE FOR CONNECTIONS

28286



U.S.G. & G.S. 1929, 1943, 1955, 1960, 1963, 1967, 1970, 1973, 1976, 1979, 1982, 1985, 1988, 1991, 1994, 1997, 2000, 2003, 2006, 2009, 2012, 2015, 2018, 2021, 2024