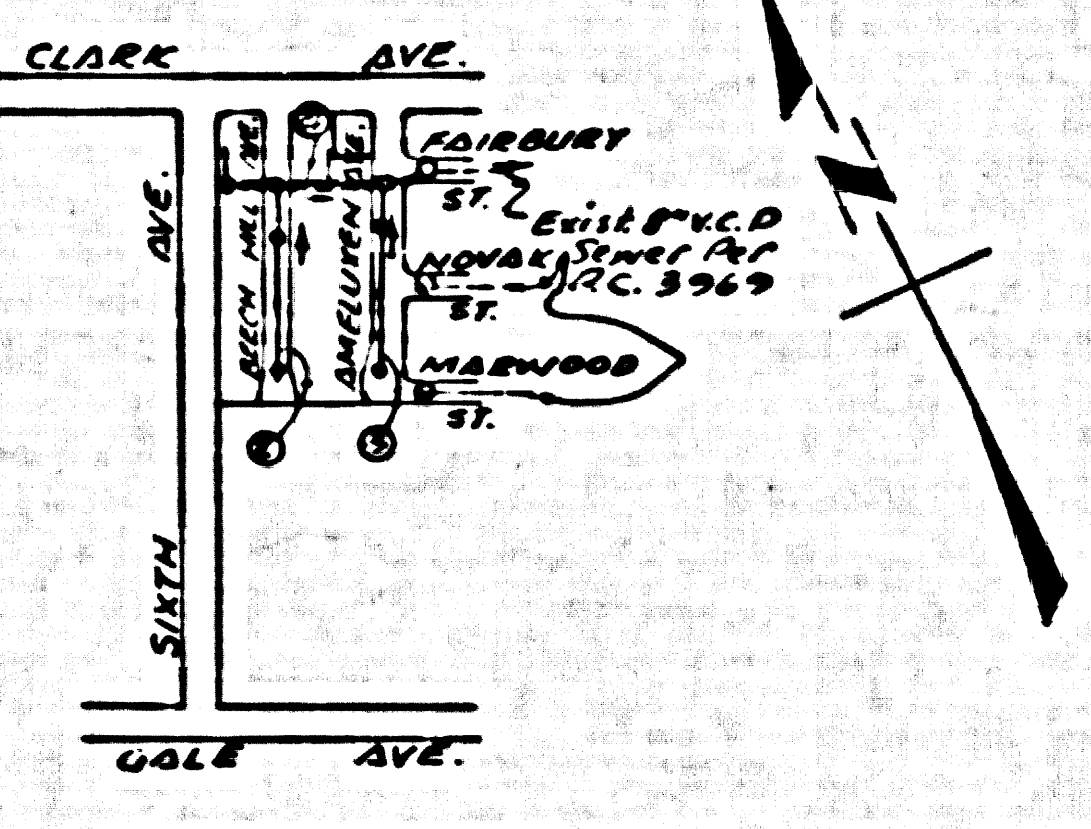


BENCH MARK
 B.M. S.S. 1350 ADJ. 1955 L.G.T. ± 4'
 SO. CURB RETURN AT S.E. CORNER
 CLARK AVENUE AND SEVENTH
 AVENUE (BASELINE) ELEV. 322.224



INDEX MAP
 SCALE: 1"=600'
 TRACT NO 24812
 P.C.5/83

PUNTE BLDG. DIST. NO. 2

- NOTES**
1. PROVIDE STAKES ON THE PROPERTY LINE OR PROPERTY LINES PRODUCED AT RIGHT ANGLES TO THE SEWER LINE AT THE CENTER LINE OF EACH MANHOLE.
 2. THE REPRESENTATIVE OF THE COUNTY ENGINEER WILL SURVEY OR LAE ONE ANY PORTION OF THE WORK.
 3. THE OWNER OR HIS AUTHORIZED REPRESENTATIVE SHALL FURNISH THE COUNTY ENGINEER WITH GRADE SHEETS AND STATIONING FOR ALL HOUSE LATERALS AND Y BRANCHES AND SHALL PROVIDE STAKES FOR THEM AT THESE PROPER LOCATIONS WITH STATIONING PLAINLY MARKED. ANY CHANGE IN LOCATION SHALL BE REQUESTED IN WRITING BY THE OWNER OR HIS REPRESENTATIVE.
 4. THE PRIVATE ENGINEER SHALL FURNISH THE HOUSE LATERAL DEPOT AT THE PROPERTY LINE BELOW THE TOP OF CURB ELEVATION FOR EACH HOUSE LATERAL ON THE GRADE SHEET.
 5. NO REVISIONS SHALL BE MADE IN THESE PLANS WITHOUT THE APPROVAL OF THE COUNTY ENGINEER.
 6. USE STANDARD MANHOLE FRAMES AND COVERS, 5'-6" H.T., EXCEPT AS NOTED.
 7. USE STANDARD STRENGTH PIPE EXCEPT AS NOTED.
 8. USE EMBLEM MONIES OR "WATER-SOLE" OR "SEWER-SOLE" FOR ALL V.C.P. JOINTS PER SPEC., SECT. 10 & 11.
 9. RESURFACE ALL OPENINGS WITHIN PAVED AREA TO MEET L.A. COUNTY ROAD DEPT. OR CALIF. STATE HIGHWAY REQUIREMENTS IN ACCORDANCE WITH PERMITS.
 10. ENCASE FOUR FEET OF SEWER AT POINTS OF INTERFERENCE WITH POLES, CASE 10, 5-6-173.
 11. HOUSE LATERALS TO BE CONSTRUCTED WITH INVERTS AT PROPERTY LINE... FEET BELOW CURB GRADE EXCEPT AS NOTED.
 12. ALL STRUCTURES SHALL BE BUILT SEWER STRUCTURES, 5-6-104, EXCEPT AS NOTED.
 13. FOR ALLOWABLE LEAKAGE TEST USE FORMULA NO. 1, SPEC., SEC. 6A.
 14. MANHOLE TOPS IN UNIMPROVED RIGHTS-OF-WAY TO BE SIX INCHES ABOVE FINISHED GRADE.
 15. THE CONTRACTOR SHALL NOTIFY THE CONSTRUCTION & STORM DRAIN DIVISION BY TELEPHONE, MARSHEN 6-9-07, EXT. 241 AT LEAST THIRTY-TWO HOURS BEFORE STARTING ANY WORK UNDER THIS CONTRACT.
 16. STANDARD SPECIFICATIONS DATED MAY 15, 1959 APPLY TO THE CONSTRUCTION OF THIS PROJECT.

PROFILE ALIGNMENT AND GRADE OF **P.C.5/83**
SANITARY SEWERS PAGE **1**
 TO BE CONSTRUCTED IN **J.N.035110**

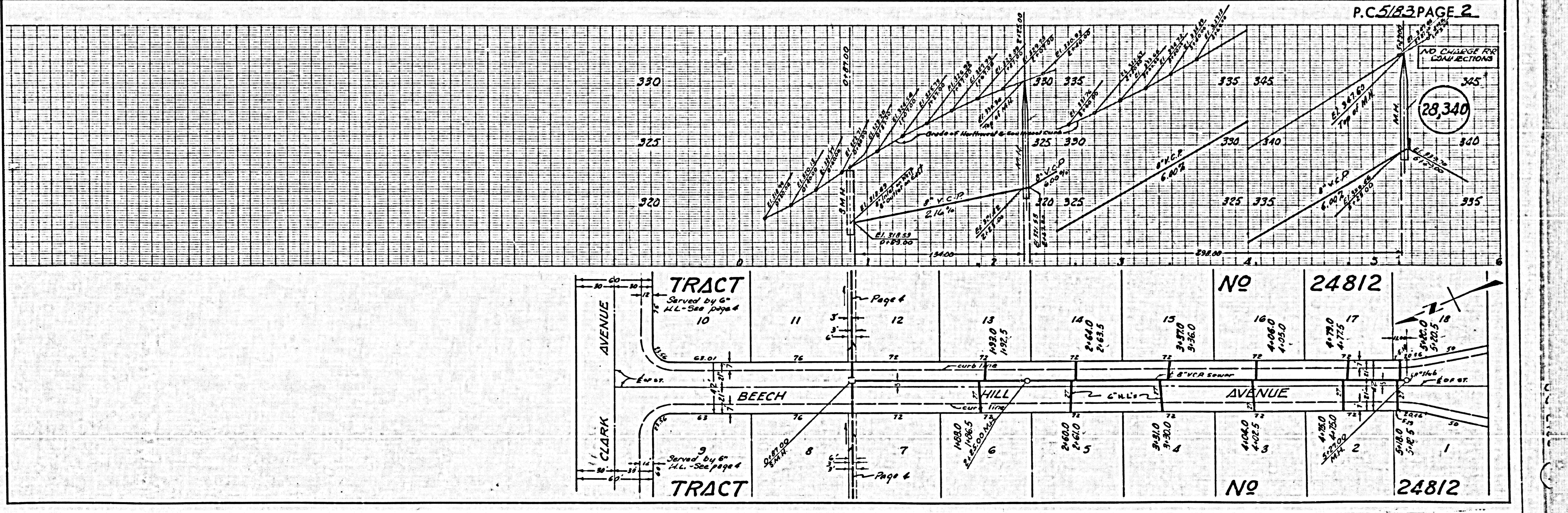
TRACT NO 24812
 PRIVATE CONTRACT NO. **5/83**

W.S. **37**
2 SHEETS, 4 PAGES
 SCALE: VERT. 1"=5' HORIZ. 1"=50' **JUNE, 1959** (28,339)
 PREPARED IN THE OFFICES OF
ROSENTHAL ENGINEERING CO.
 BY **A. J. Rosenthal**
 REG. C. E. NO. **2207**
 FOR LEGEND SEE PLAN NO. S-A-64

NOTES
 GRADES TO WHICH THIS IMPROVEMENT IS TO BE CONSTRUCTED ARE SHOWN ON PLANS AND PROFILES. SMALL POINTS FOR TOP OF CURBS, CENTER LINE OF STREETS, OR CENTER LINE OF ALLEYS ARE SHOWN IN CIRCLES AND PROFILES. AT ALL POINTS BETWEEN DESIGNATED POINTS THE GRADE SHALL BE ESTABLISHED SO AS TO COMFORM TO A STRAIGHT LINE DRAWN BETWEEN SAID DESIGNATED POINTS.
 ELEVATIONS ARE IN FEET ABOVE U.S.C. & G.S. MEAN LEVEL DATUM OF 1929.
 THIS DRAWING AND THE DATA HEREON ARE HEREBY MADE A PART OF THE SPECIFICATIONS.
 BEFORE WORK CAN BE STARTED, THE CONTRACTOR MUST OBTAIN A PERMIT TO EXCAVATE IN COUNTY ENGINEER AND SHALL BE PROSECUTED ONLY IN THE PRESENCE OF THE COUNTY ENGINEER.
 BEFORE WORK CAN BE STARTED, THE CONTRACTOR MUST OBTAIN A PERMIT TO EXCAVATE IN COUNTY ENGINEER AND SHALL BE PROSECUTED ONLY IN THE PRESENCE OF THE COUNTY ENGINEER.
 THE COUNTY ROAD DEPT., DISTRICT OFFICE NO. 7, AND MAKE A DEPOSIT WITH THE COUNTY ENGINEER, ROOM 334 PAN AMERICAN BUILDING, 220 BROADWAY SUPERVISOR TO COVER THE COST OF CONSTRUCTION INSPECTION AND RECORD PLANS.
 APPROVAL OF THIS PLAN BY THE COUNTY OF LOS ANGELES DOES NOT CONSTITUTE A REPRESENTATION AS TO THE ACCURACY OF THE LOCATION OF OR THE EXISTENCE OR NON-EXISTENCE OF ANY UNDERGROUND UTILITY PIPE OR STRUCTURE WITHIN THE LIMITS OF THIS PROJECT. THIS NOTE APPLIES TO ALL PAGES.
 IF WORK IS TO BE DONE BY A STATE HIGHWAY, A PERMIT MUST BE OBTAINED FROM THE STATE OF CALIFORNIA, DIVISION OF HIGHWAYS, 120 SOUTH BRIDGE STREET.

COUNTY OF LOS ANGELES, CALIFORNIA
 APPROVED, JOHN A. LAMBE, COUNTY ENGINEER
 APPROVED, G.E. CAMPBELL, CHIEF ENGINEER
 CO. SAN. E.S. NO. **15**
 BY **C.E. Camp** ASST. SANITATION ENGINEER BY **G.E. Campbell** OFFICE ENGINEER
 CHECKED BY **J.K. Oude** 5-21-59
 OFFICE OF COUNTY ENGINEER, REG. C. E. NO. **9416**

NO CHARGE FOR CONNECTIONS
 W. H. Dennis 8-10-59



P.C.5/83 PAGE 2

NO CHARGE FOR CONNECTIONS

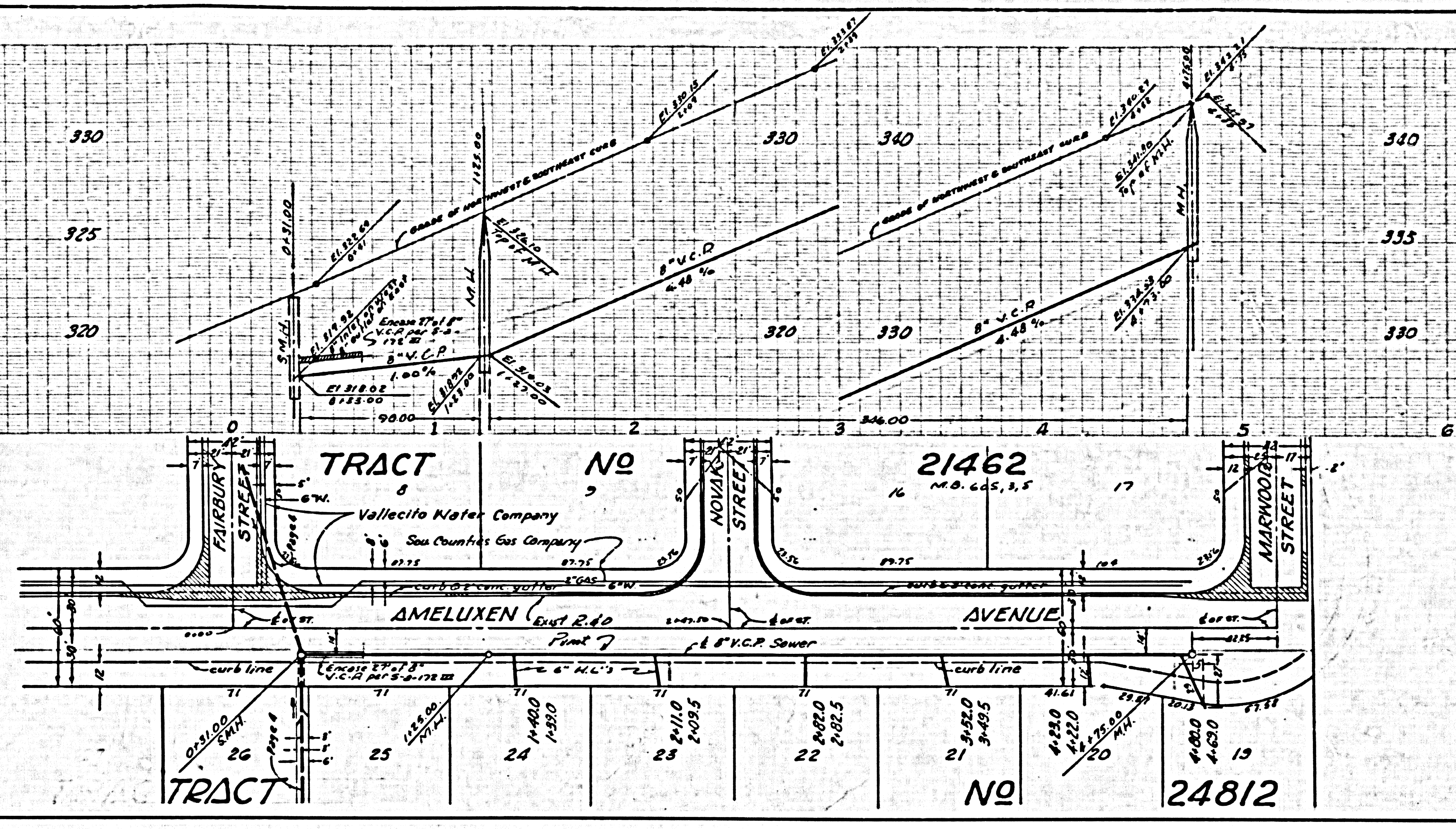
(28,340)

TRACT NO 24812

TRACT NO 24812

NO CHARGE FOR CONNECTIONS

28,341



NO CHARGE FOR CONNECTIONS

28,342

