

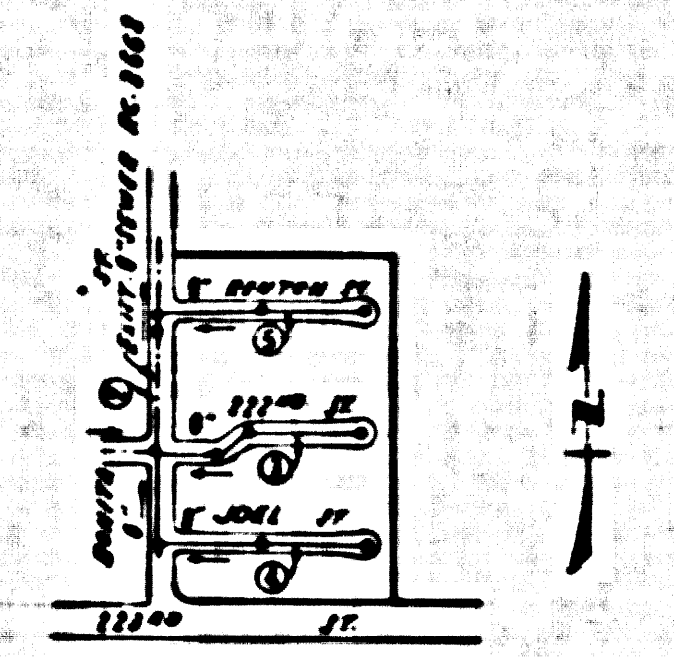
BENCH MARK: SY. 4088 ELEV. 28340
 Los Angeles County Survey Map 216 E. of 8
 Avalon Blvd. § 576 No. of E.E. 22300 71
 M&A. B.M. 23-10. 1852 R.E. 63 (Gardens Road)
 1955 AD.

NO CHARGE FOR CONNECTIONS
 F. Klein 7-27-59

Do not issue permits until
 Tract No. 24751 is recorded.

LOMITA BLDG. DIST. NO. 7.7

- NOTES:**
1. PROFILE STAKES ON THE PROPERTY LINE OR PROPERTY LINES PRODUCED AT RIGHT ANGLES TO THE SEWER LINE AT THE CENTER LINE OF EACH MANHOLE.
 2. NO REPRESENTATIVE OF THE COUNTY ENGINEER WILL SURVEY OR LAY OUT ANY PORTION OF THE WORK.
 3. THE OWNER OR HIS AUTHORIZED REPRESENTATIVE SHALL FURNISH THE COUNTY ENGINEER WITH GRADE SHEETS AND STATIONING FOR ALL HOUSE LATERALS AND Y BRANCHES AND SHALL PROVIDE STAKES FOR THEM AT THESE PROPER LOCATIONS WITH BEARINGING PLAINLY MARKED. ANY CHANGE IN LOCATION SHALL BE REQUESTED IN WRITING BY THE OWNER OR HIS REPRESENTATIVE.
 4. THE PRIVATE ENGINEER SHALL FURNISH THE HOUSE LATERAL DEPTH AT THE PROPERTY LINE BELOW THE TOP OF CURB ELEVATION FOR EACH HOUSE LATERAL ON THE GRADE SHEET.
 5. NO REVISIONS SHALL BE MADE IN THESE PLANS WITHOUT THE APPROVAL OF THE COUNTY ENGINEER.
 6. USE STANDARD MANHOLE FRAMES AND COVERS, 2-1/2' DIA., EXCEPT AS NOTED.
 7. USE STANDARD STRENGTH PIPE EXCEPT AS NOTED.
 8. USE CEMENT MORTAR OR "WEDGE-LOCK" OR "SEED-BEAM" FOR ALL V.C.P. JOINTS PER SPEC., SECS. 28 & 42.
 9. RESURFACE ALL TRENCH WITHIN PAVED AREA TO MEET L.A. COUNTY ROAD DEPT. OR CALIF. STATE HIGHWAY REQUIREMENTS IN ACCORDANCE WITH PERMITS.
 10. ENCASE FOUR FEET OF SEWER AT POINTS OF INTERFERENCE WITH CURB, CASE NO. 5-172.
 11. INCASE LATERALS TO BE CONSTRUCTED WITH INVERTS AT PROPERTY LINE, 4' FEET BELOW CURB GRADE EXCEPT AS NOTED.
 12. ALL STRUCTURES SHALL BE BRICK SEWER STRUCTURES, 5-104, EXCEPT AS NOTED.
 13. FOR ALLOWABLE LEAKAGE TEST USE FORMULA NO. 1, SPEC., SEC. 54.
 14. MANHOLE TOPS IN UNIMPROVED RIGHTS-OF-WAY TO BE SIX INCHES ABOVE FINISHED GRADE.
 15. THE CONTRACTOR SHALL NOTIFY THE CONSTRUCTION & SHOWS BRANCH DIVISION BY TELEPHONE, MAIL OR BY MAIL AT LEAST TWENTY-FOUR HOURS BEFORE STARTING ANY WORK UNDER THIS CONTRACT.
 16. STANDARD SPECIFICATIONS DATED MAY 15, 1958 APPLY IN THE CONSTRUCTION OF THIS PROJECT.



INDEX MAP
 SCALE 1"=600'
 TRACT NO. 24751
 R.E. 6377

PROFILE ALIGNMENT AND GRADE OF **P.C. 5187**
SANITARY SEWERS PAGE 1
 TO BE CONSTRUCTED IN **J.M. 0351.13**

TRACT No. 24751

PRIVATE CONTRACT NO. 5187

W.S. 28

3 SHEETS, 5 PAGES

SCALE: VERT. 1"=4' HORIZ. 1"=40'

APRIL, 1959

PREPARED IN THE OFFICES OF
RICHARD B. BROWN JR.
 7623 CORNELL WILMOTA AVE., DIVERS PARK, CALIF.
 PHONE LAURENCE 2-2323

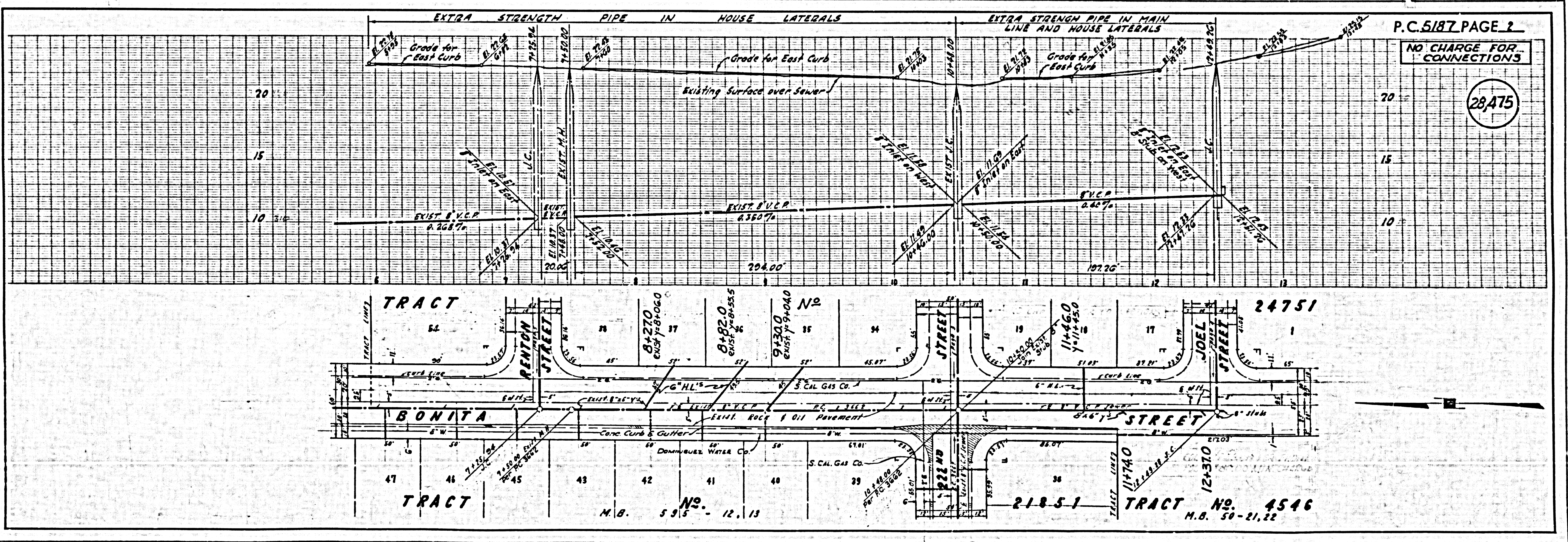
28474

FOR LEGEND SEE PLAN NO. 5-A-64

NOTE:
 GRADES TO WHICH THIS IMPROVEMENT IS TO BE CONSTRUCTED ARE SHOWN ON PLANS AND PROFILES. GRADE POINTS FOR TOP OF CURB, CENTER LINE OF STREET, OR CENTER LINE OF ALLEYS ARE SHOWN BY CIRCLES ON PROFILES. AT ALL POINTS BETWEEN DESIGNATED POINTS THE GRADE SHALL BE ESTABLISHED SO AS TO COMFORM TO A SMOOTH LINE DRAWN BETWEEN SAID DESIGNATED POINTS.
 ELEVATIONS ARE IN FEET ABOVE U.S.C. & G.S. SEA LEVEL DATUM OF 1929.
 THIS DRAWING AND THE DATA HEREON ARE HEREBY MADE A PART OF THE SPECIFICATIONS.
 WORK SHALL BE CONSTRUCTED ACCORDING TO SPECIFICATIONS ON FILE IN THE OFFICE OF THE COUNTY ENGINEER AND SHALL BE PROSECUTED ONLY IN THE PRESENCE OF THE COUNTY ENGINEER.
 BEFORE WORK CAN BE STARTED, THE CONTRACTOR MUST OBTAIN A PERMIT TO EXCAVATE IN COUNTY STREETS FROM THE L.A. COUNTY ROAD DEPT., DISTRICT OFFICE NO. 3, AND MAKE A DEPOSIT WITH THE COUNTY ENGINEER, ROOM 324 PAN AM AMERICAN BUILDING, 325 SO. BROADWAY, SUFFICIENT TO COVER THE COST OF CONSTRUCTION INSPECTION AND RECORD PLANS.
 APPROVAL OF THIS PLAN BY THE COUNTY OF LOS ANGELES DOES NOT CONSTITUTE A REPRESENTATION AS TO THE ACCURACY OF THE LOCATION OF OR THE EXISTENCE OR NON-EXISTENCE OF ANY UNDERGROUND UTILITY PIPE, OR STRUCTURE WITHIN THE LIMITS OF THIS PROJECT. THIS NOTE APPLIES TO ALL PAGES.
 IF WORK IS TO BE DONE IN A STATE HIGHWAY, A PERMIT MUST BE OBTAINED FROM THE STATE OF CALIFORNIA, DIVISION OF HIGHWAYS, 120 SOUTH SPRING STREET.

COUNTY OF LOS ANGELES, CALIFORNIA

APPROVED, JOHN A. LAMME, COUNTY ENGINEER
 APPROVED, E.R. COMPTON, CHIEF ENGINEER
 BY *[Signature]* BY *[Signature]*
 CHECKED BY *[Signature]*
 OFFICE OF COUNTY ENGINEER, 325 S. B. NO. 32-637



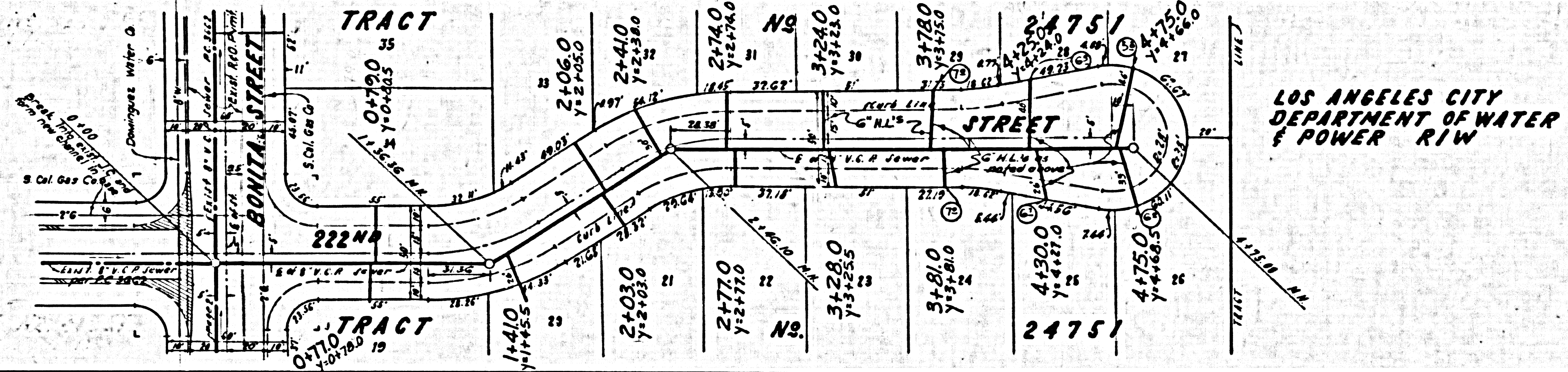
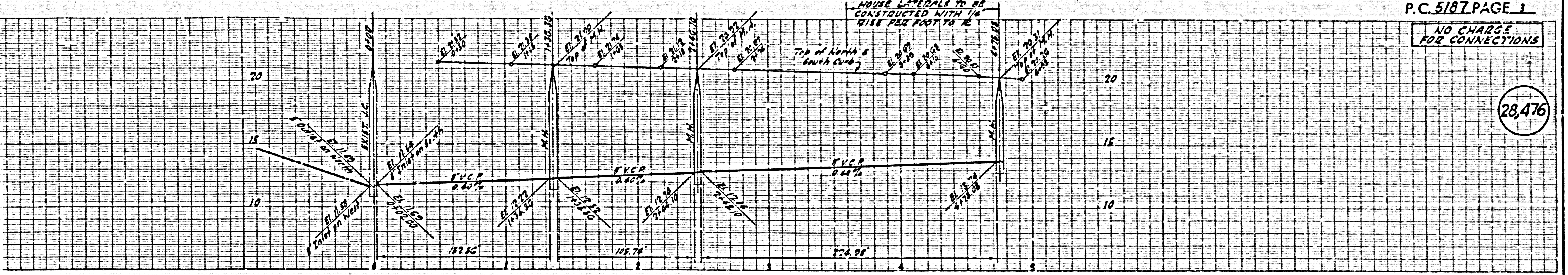
P.C. 5187 PAGE 2

NO CHARGE FOR CONNECTIONS

28475

NO CHARGE FOR CONNECTIONS

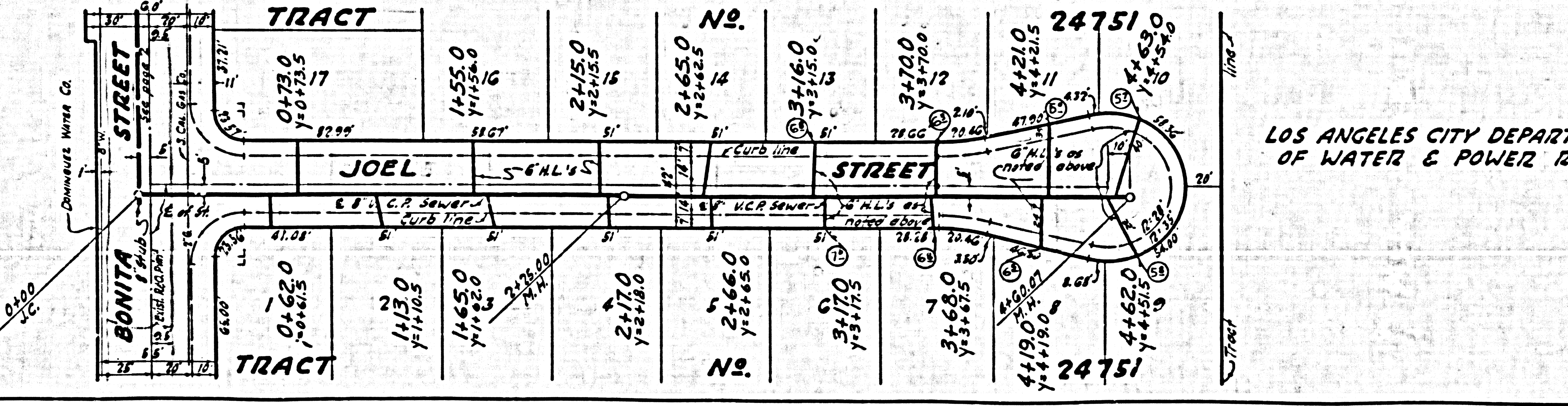
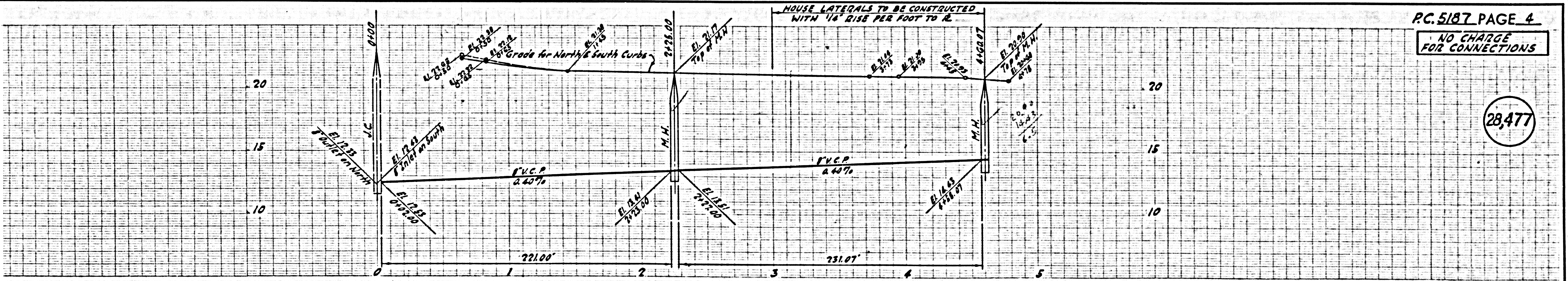
28,476



LOS ANGELES CITY DEPARTMENT OF WATER & POWER RIW

NO CHARGE FOR CONNECTIONS

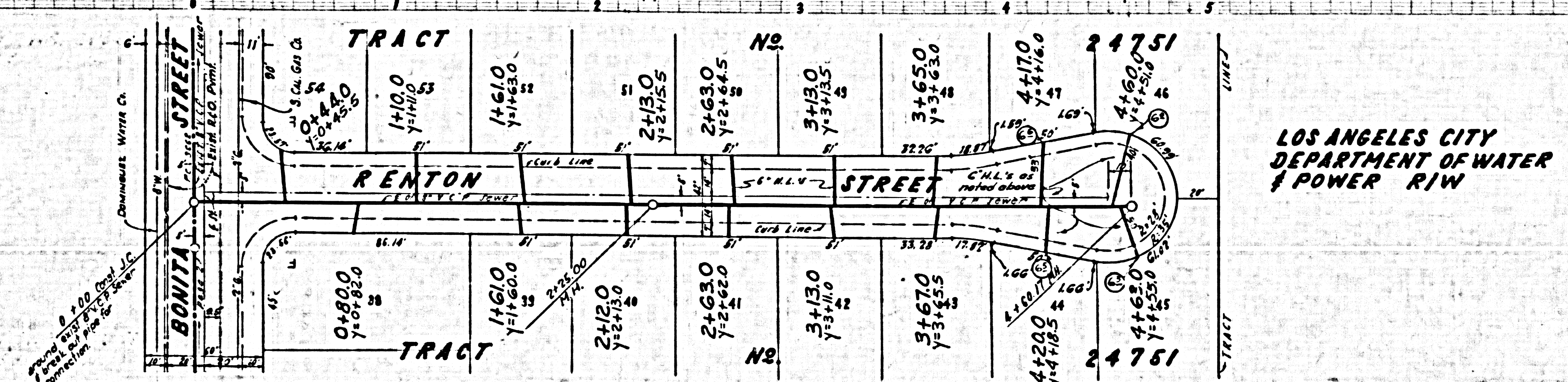
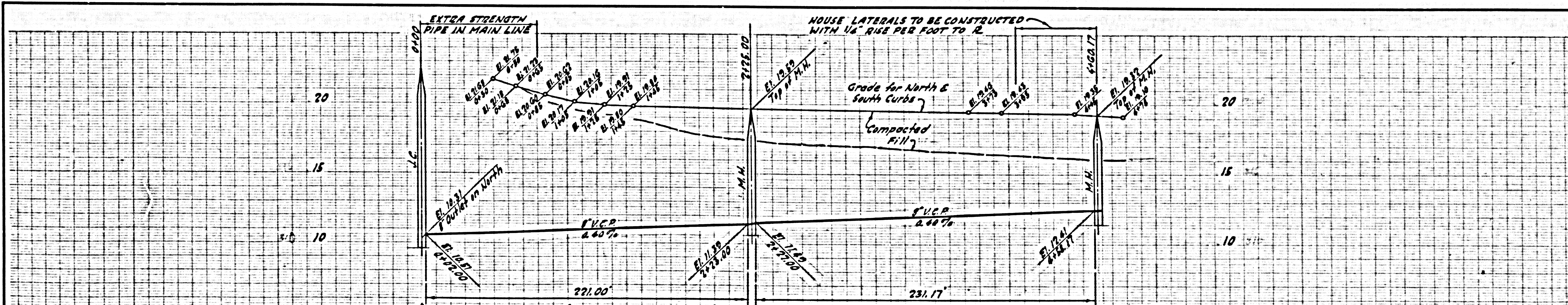
28,477



LOS ANGELES CITY DEPARTMENT OF WATER & POWER RIW

NO CHARGE FOR CONNECTIONS

28,478



LOS ANGELES CITY DEPARTMENT OF WATER & POWER RIW

