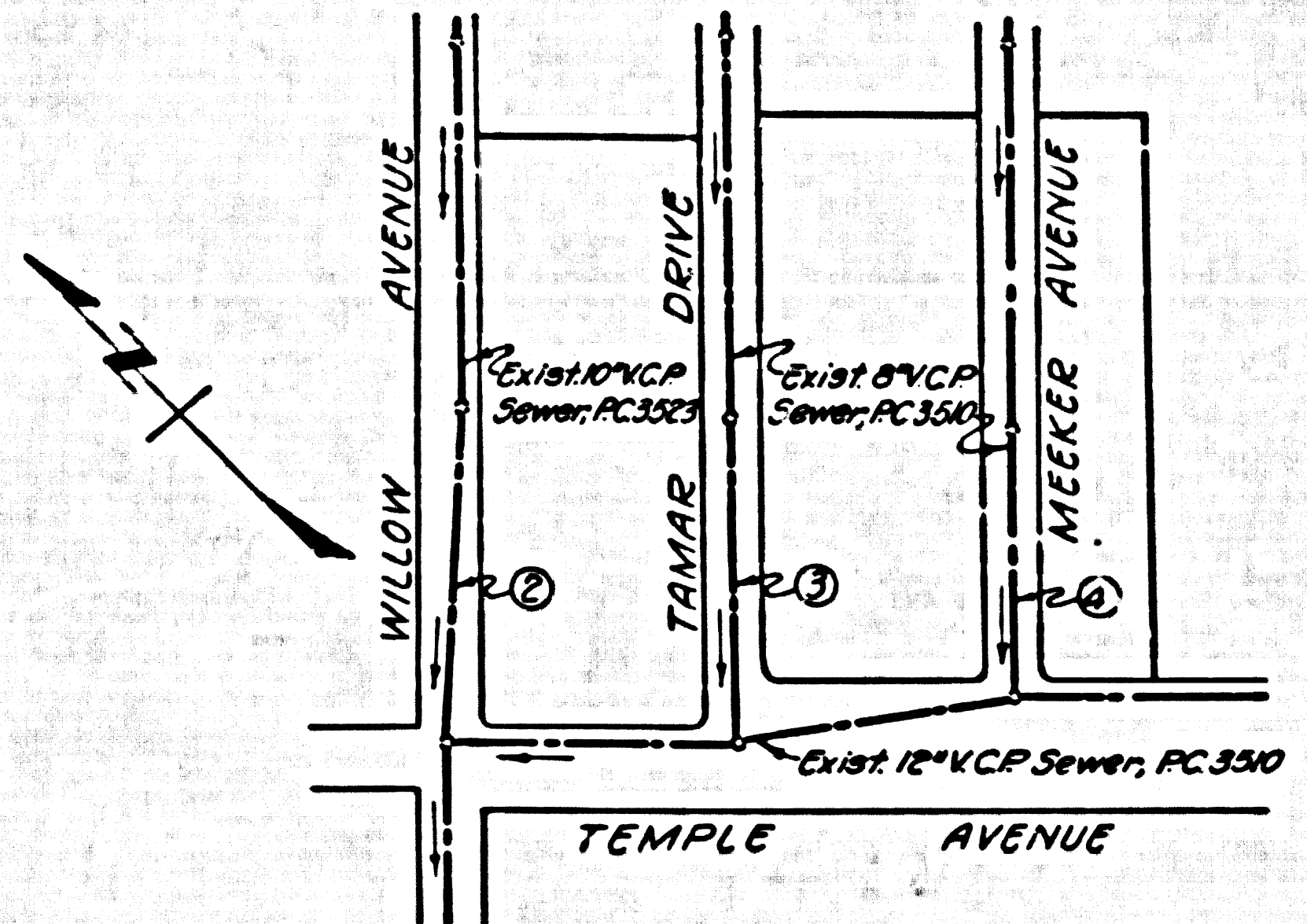


B.M. 56 1117 L&N in S.C. Elliott Ave
 1' d' E. of B.C.E. @ SW Cor. Willow Ave
 = 54' x 140' 5/8" CL. int. Elev. 316.98



INDEX MAP
 TRACT No. 24906
 P.C. 5188
 5c3/6-1\"/>

NO CHARGE FOR CONNECTIONS
 7/27/59

CITY OF LA PUENTE
 Approved: *[Signature]*
 City Manager

LA PUENTE BLDG. DIST. NO. 2.02

- NOTES:
1. PROFILE STAKES ON THE PROPERTY LINE OR PROPERTY LINES PRODUCED AT RIGHT ANGLES TO THE SEWER LINE AT THE CENTER LINE OF EACH MANHOLE.
 2. NO REPRESENTATIVE OF THE CITY ENGINEER WILL SURVEY OR LAY OUT ANY PORTION OF THE WORK.
 3. THE OWNER OR HIS AUTHORIZED REPRESENTATIVE SHALL FURNISH THE CITY ENGINEER WITH GRADE SHEETS AND STATIONING FOR ALL HOUSE LATERALS AND Y BRANCHES AND SHALL PROVIDE STAKES FOR THESE AT THEIR PROPER LOCATIONS WITH STATIONING PLAINLY MARKED. ANY CHANGE IN LOCATION SHALL BE REQUESTED IN WRITING BY THE OWNER OR HIS REPRESENTATIVE.
 4. THE PRIVATE ENGINEER SHALL ADDRESS THE HOUSE LATERAL DEPTH AT THE PROPERTY LINE ABOVE THE TOP OF CURB ELEVATION FOR EACH HOUSE LATERAL ON THE GRADE SHEET.
 5. NO REVISIONS SHALL BE MADE IN THESE PLANS WITHOUT THE APPROVAL OF THE CITY ENGINEER.
 6. USE STANDARD STRENGTH PIPE UNLESS AS NOTED.
 7. USE STANDARD MORTAR OR "WEB-CRETE" OR "SPREAD SEAL" FOR ALL V.C.P. JOINTS PER SPEC'S, SECS. 26 & 27.
 8. SURFACE ALL TRENCH WITHIN PAVED AREA TO MEET L.A. COUNTY ROAD DEPT. OR CALIF. STATE HIGHWAY REQUIREMENTS IN ACCORDANCE WITH PERMITS.
 9. IN CASE OF THE SET OF SEWER AT POINTS OF INTERFERENCE WITH POLES, CASE NO. 5-172.
 10. HOUSE LATERALS TO BE CONSTRUCTED WITH OFFSETS AT PROPERTY LINE 6\"/>

ENGINEERING SERVICE CORPORATION 1127 W. WASHINGTON BLVD. LOS ANGELES 15, CALIF. RI. 9-7281	
REVISIONS	TRACED BY: <i>B.R.</i>
	DES'G'D BY: <i>D.H.</i>
	CK'D BY: <i>CMR</i>
	SUBMITTED:
SUB STRUCTURES OK'D	
W. O. NO.	DWG. NO.
5950-113	May, 1959
DATE	SCALE
May, 1959	As Noted
L. S.	P. S.

PROFILE ALIGNMENT AND GRADE OF P.C. 5188
 SANITARY SEWERS PAGE 1

TO BE CONSTRUCTED IN
 TRACT No. 24906

28,518

PRIVATE CONTRACT NO. 5188

W.S.38
 2 SHEETS, 4 PAGES

SCALE: HORIZ. 1\"/>

MAY, 1959
 PREPARED IN THE OFFICES OF
 ENGINEERING SERVICE CORPORATION

By: *[Signature]*
 REG. C. E. NO. 3292

FOR LEGEND SEE PLAN NO. 5-A-64

NOTES:
 GRADES TO WHICH THIS IMPROVEMENT IS TO BE CONSTRUCTED ARE SHOWN ON PLANS AND PROFILE. GRADE POINTS FOR TOP OF CURB, CENTER LINE OF STREETS, OR CENTER LINE OF ALLEYS ARE SHOWN BY CIRCLES ON PROFILES AT ALL POINTS BETWEEN DESIGNATED POINTS. THE GRADE SHALL BE ESTABLISHED AS TO CORNERS TO A STRAIGHT LINE DRAWN BETWEEN SAID DESIGNATED POINTS.
 ELEVATIONS ARE IN FEET ABOVE M.T.C. & U.S. SEA LEVEL DATUM OF 1929.
 THIS DRAWING AND THE DATA HEREON ARE HEREBY MADE A PART OF THE SPECIFICATIONS.
 WORK SHALL BE CONSTRUCTED ACCORDING TO SPECIFICATIONS ON FILE IN THE OFFICE OF THE CITY ENGINEER AND SHALL BE INSPECTED ONLY IN THE PRESENCE OF THE CITY ENGINEER.
 BEFORE WORK CAN BE STARTED, THE CONTRACTOR MUST OBTAIN A PERMIT TO EXCAVATE IN CITY STREETS FROM THE L.A. COUNTY ROAD DEPT., DISTRICT OFFICE NO. 1, AND MAKE A REPORT WITH THE COUNTY ENGINEER, ROOM 304 SAN ANTONIO BLDG., 300 SO. BROADWAY, LOS ANGELES, TO COVER THE COST OF CONSTRUCTION INSPECTION AND RECORD PLANS.
 APPROVAL OF THIS PLAN BY THE CITY OF LA PUENTE DOES NOT CONSTITUTE A REPRESENTATION AS TO THE ACCURACY OF THE LOCATION OR OF THE EXISTENCE OR NON-EXISTENCE OF ANY UNDERGROUND UTILITY PIPE, GAS STRUCTURE WITHIN THE LIMITS OF THIS PROJECT. THIS NOTICE APPLIES TO ALL PAGES.
 IF WORK IS TO BE DONE IN A STATE HIGHWAY, A PERMIT MUST BE OBTAINED FROM THE STATE OF CALIFORNIA, DIVISION OF HIGHWAYS, 120 SOUTH SPRING STREET.

CITY OF LA PUENTE, CALIFORNIA

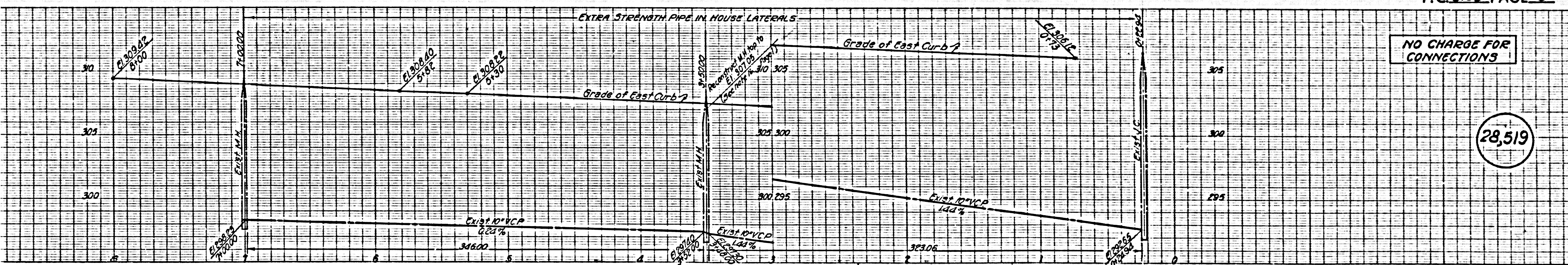
APPROVED, JOHN A. LAMBE, CITY ENGINEER

By: *[Signature]*
 SANITATION ENGINEER

CHECKED BY: *[Signature]*

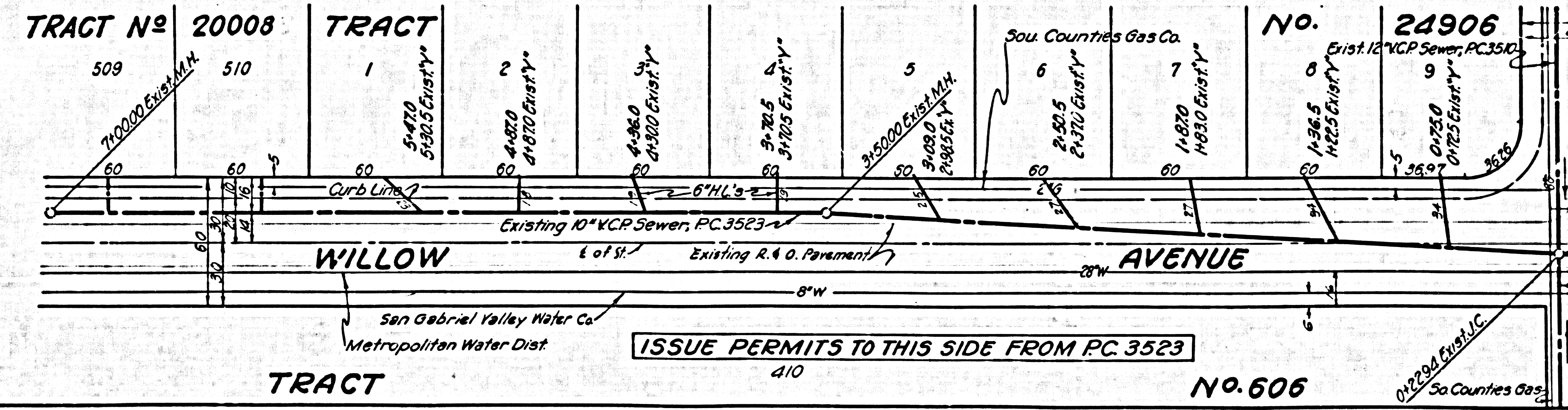
OFFICE OF CITY ENGINEER, REG. C. E. NO. 9216

P.C. 5188 PAGE 2



NO CHARGE FOR CONNECTIONS

28,519



NO. 24906

EXIST. 12\"/>

EXIST. 10\"/>

EXIST. 10\"/>

EXIST. 10\"/>

EXIST. 10\"/>

EXIST. 10\"/>

EXIST. 10\"/>

EXIST. 10\"/>

EXIST. 10\"/>

EXIST. 10\"/>

EXIST. 10\"/>

EXIST. 10\"/>

EXIST. 10\"/>

EXIST. 10\"/>

EXIST. 10\"/>

EXIST. 10\"/>

EXIST. 10\"/>

EXIST. 10\"/>

EXIST. 10\"/>

EXIST. 10\"/>

EXIST. 10\"/>

EXIST. 10\"/>

EXIST. 10\"/>

EXIST. 10\"/>

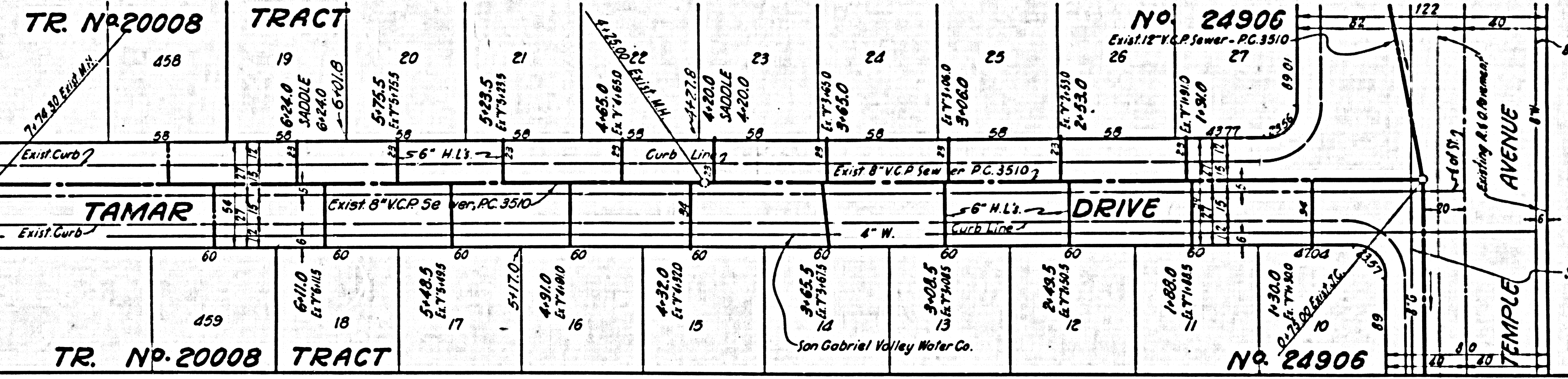
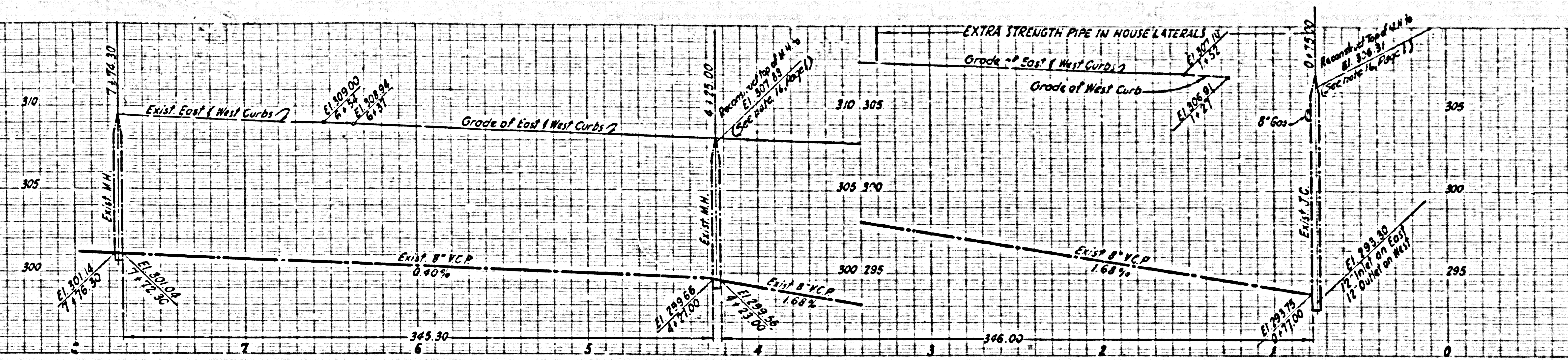
EXIST. 10\"/>

EXIST. 10\"/>

EXIST. 10\"/>

NO CHARGE FOR CONNECTIONS

28,520



NO CHARGE FOR CONNECTIONS

28,521

