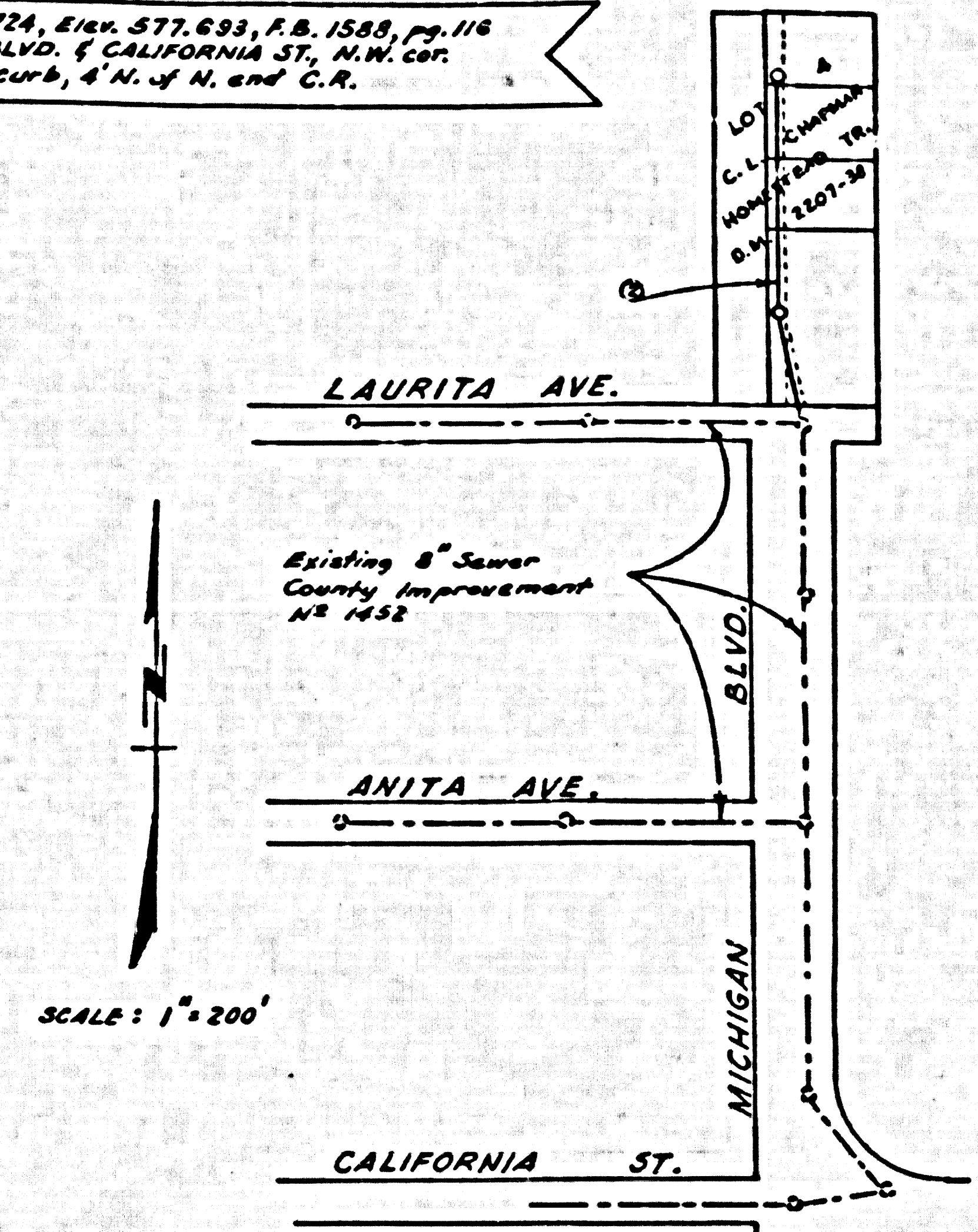


B.M. - T.E.-724, Elev. 577.693, F.B. 1588, pg. 116  
 MICHIGAN BLVD. & CALIFORNIA ST., N.W. COR.  
 87.3PA. in curb, 4' N. of N. and C.R.



INDEX MAP

### ALTADENA BLDG. DIST. NO. 3

- NOTES**
- PROVIDE STAKES ON THE PROPERTY LINE OR PROPERTY LINES PRODUCED AT RIGHT ANGLES TO THE SEWER LINE AT THE CENTER LINE OF EACH MANHOLE.
  - NO REPRESENTATIVE OF THE COUNTY ENGINEER WILL SURVEY OR LAY OUT ANY PORTION OF THE WORK.
  - THE OWNER OR HIS AUTHORIZED REPRESENTATIVE SHALL FURNISH THE COUNTY ENGINEER WITH GRADE SHEETS AND STATIONING FOR ALL HOUSE LATERALS AND Y BRANCHES AND SHALL PROVIDE STAKES FOR THEM AT THEIR PROPER LOCATIONS WITH STATIONING PLAINLY MARKED. ANY CHANGE IN LOCATION SHALL BE REQUESTED BY NOTING BY THE OWNER OR HIS REPRESENTATIVE.
  - THE PRIVATE ENGINEER SHALL FURNISH THE HOUSE LATERAL STAKES AT THE PROPERTY LINE SHOWING THE TOP OF CURB ELEVATION FOR EACH HOUSE LATERAL ON THE GRADE SHEET.
  - NO REVISIONS SHALL BE MADE IN THESE PLANS WITHOUT THE APPROVAL OF THE COUNTY ENGINEER.
  - USE STANDARD MANHOLE FRAMES AND COVERS, 6'-11 1/2".
  - USE STANDARD STRENGTH PIPE.
  - USE CEMENT MORTAR OR "WEDGE-LOCK" OR "SPREAD-SEAL" FOR ALL V.C.P. JOINTS PER SPEC'S, SECS. 51 & 54.
  - RESURFACE ALL TRENCH WITHIN PAVED AREA TO MEET L.A. COUNTY ROAD DEPT. OR CALIF. STA'S HIGHWAY REQUIREMENTS IN ACCORDANCE WITH PERMITS.
  - SHALL FURNISH PILES OF SEWER AT POINTS OF INTERFERENCE WITH HOUSES, CASE NO. 8-1172.
  - HOUSE LATERALS TO BE CONSTRUCTED WITH UNGLAZED 6" V.C.P. PER SPEC'S, SEC. 51.
  - ALL STRUCTURES SHALL BE BRICK SEWER STRUCTURES, 6'-10".
  - FOR ALLOWABLE LEAKAGE TEST USE FORMULA NO. 1 - SPEC'S, SEC. 54.
  - MANHOLE TOPS IN UNIMPROVED RIGHTS-OF-WAY TO BE LEVEL WITH FINISHED GRADE.
  - CONTRACTOR SHALL NOTIFY THE CONSTRUCTION & STORM DRAIN DIVISION BY TELEPHONE, BARRON 8-822, EXT. 342, AT LEAST TWENTY FOUR HOURS BEFORE STARTING ANY WORK UNDER THIS CONTRACT.
  - STANDARD SPECIFICATIONS DATED MAY 14, 1939 APPLY IN THE CONSTRUCTION OF THIS PROJECT.

**NO CHARGE FOR CONNECTIONS**  
*San Gabriel Valley*

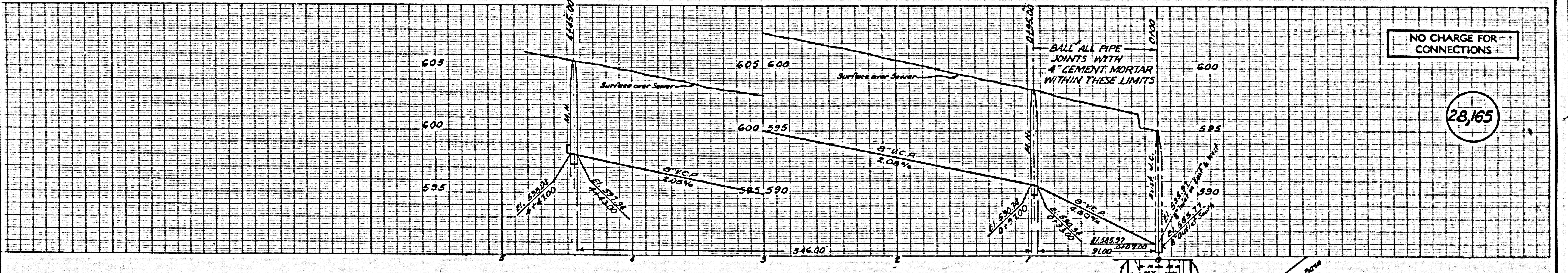
PROFILE ALIGNMENT AND GRADE OF **P.C. 5190**  
**SANITARY SEWERS PAGE 1**  
 TO BE CONSTRUCTED IN **J.N. 0351.14**  
**PORTION OF LOT 4**  
**C.L. CHAPMAN HOMESTEAD TRACT**  
**D.M. 2207-38**

**PRIVATE CONTRACT NO. 5190**  
 W.S. 44  
 1 SHEET, 2 PAGES  
 SCALE: HORIZ. 1" = 40' VERT. 1" = 4'  
 JUNE, 1959  
 PREPARED IN THE OFFICES OF  
**H. CLIFFORD THORN & ASSOCIATES**  
 BY *H. Clifford Thorn*  
 REG. C.E. NO. 1806  
 FOR LEGEND SEE PLAN NO. S.A. 44

28,164

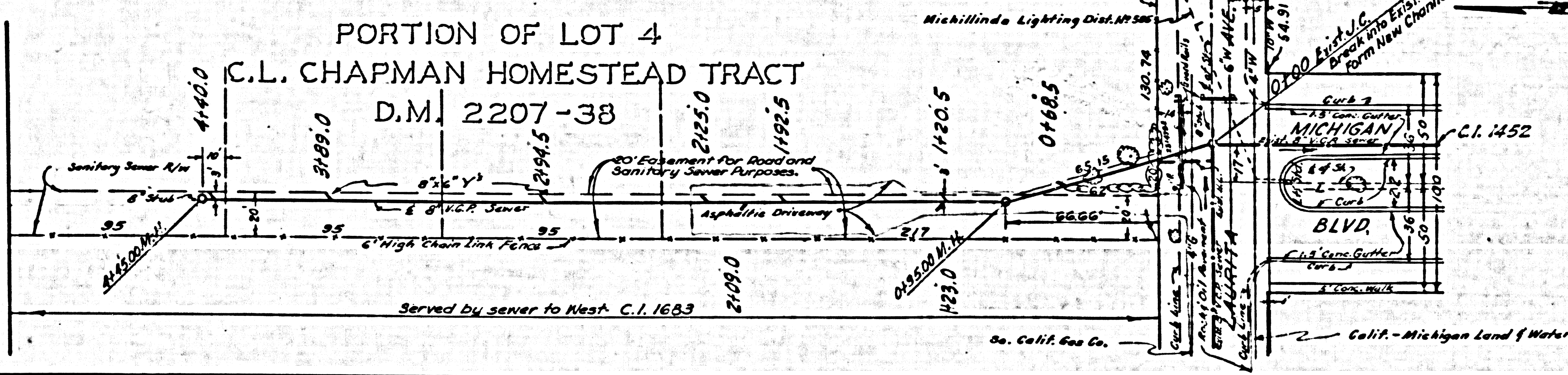
**NOTE:**  
 GRADES TO WHICH THIS IMPROVEMENT IS TO BE CONSTRUCTED ARE SHOWN ON PLANS AND PROFILE. GRADE POINTS FOR TOP OF CURB, CENTER LINE OF STREET, OR CENTER LINE OF ALLEY ARE SHOWN BY CIRCLES ON PROFILE. AT ALL POINTS BETWEEN DESIGNATED POINTS THE GRADE SHALL BE ESTABLISHED SO AS TO CONFORM TO A STRAIGHT LINE DRAWN BETWEEN SAID DESIGNATED POINTS.  
 ELEVATIONS ARE IN FEET ABOVE U.S.C. & G.S. SEA LEVEL DATUM OF 1929.  
 THE DRAWING AND THE DATA HEREON ARE HEREBY MADE A PART OF THE SPECIFICATIONS.  
 WORK SHALL BE CONSTRUCTED ACCORDING TO SPECIFICATIONS ON FILE IN THE OFFICE OF THE COUNTY ENGINEER AND SHALL BE PROSECUTED ONLY IN THE PRESENCE OF THE COUNTY ENGINEER.  
 BEFORE WORK CAN BE STARTED, THE CONTRACTOR MUST OBTAIN A PERMIT TO EXCAVATE IN COUNTY STREETS FROM THE L.A. COUNTY ROAD DEPT., DISTRICT OFFICE NO. 2, AND MAKE A DEPOSIT WITH THE COUNTY ENGINEER, ROOM 327, SAN ANTONIO BUILDING, 138 SO. BROADWAY, SUFFICIENT TO COVER THE COST OF CONSTRUCTION INSPECTION AND RECORD PLANS.  
 APPROVAL OF THIS PLAN BY THE COUNTY OF LOS ANGELES DOES NOT CONSTITUTE A REPRESENTATION AS TO THE ACCURACY OF THE LOCATION OF OR THE EXISTENCE OR NON-EXISTENCE OF ANY UNDERGROUND UTILITY PIPE, OR STRUCTURE WITHIN THE LIMITS OF THIS PROJECT. THIS NOTE APPLIES TO ALL PAGES.  
 IF WORK IS TO BE DONE IN A STATE HIGHWAY, A PERMIT MUST BE OBTAINED FROM THE STATE OF CALIFORNIA, DIVISION OF HIGHWAYS, 138 SOUTH SPRING STREET.

**COUNTY OF LOS ANGELES, CALIFORNIA**  
 APPROVED, JOHN A. LAMBE, COUNTY ENGINEER  
 APPROVED, C.E. COMPTON, CHIEF ENGINEER  
 BY *J. A. Lambe* BY *C. E. Compton*  
 SANITATION ENGINEER OFFICE ENGINEER  
 CHECKED BY *J. K. Quinn* 8-24-59  
 OFFICE OF COUNTY ENGINEER, BOX C. & NO. 4406  
 SUBMITTED, *N. F. Bravender*  
 SAN GABRIEL VALLEY REGIONAL ENGINEER



**NO CHARGE FOR CONNECTIONS**

28,165



PORTION OF LOT 4  
 C.L. CHAPMAN HOMESTEAD TRACT  
 D.M. 2207-38  
 Served by sewer to West C.I. 1683  
 Co. Calif. Gas Co.  
 Cal.P. - Michigan Land & Water Co.

NOTE - NO PERMIT HAS BEEN OBTAINED TO BUILDING M.E.