

SCALE 1"=150'
TRACT NO. 24780
P.C. 5193

SY 3532 ELEV. 116.258
L&BN IN N. CO. PAC. COAST HWY ± 1' W
C.R. AT N.W. CORNER PAC. COAST &
OAK ST.
BASE LINE 1955 GARDENA QUAD.

NO CHARGE FOR
CONNECTIONS
M. J. McLaughlin 7-29-58

L OMITA BLDG. DIST. NO. 7.1

- NOTES
1. PROVIDE STAKES ON THE PROPERTY LINE OR PROPERTY LINES PRODUCED AT RIGHT ANGLES TO THE SEWER LINE AT THE CENTER LINE OF EACH MANHOLE.
 2. NO REPRESENTATIVE OF THE COUNTY ENGINEER WILL SURVEY OR LAY OUT ANY PORTION OF THE WORK.
 3. THE OWNER OR HIS AUTHORIZED REPRESENTATIVE SHALL FURNISH THE COUNTY ENGINEER WITH GRADE SHEETS AND STATIONING FOR ALL HOUSE LATERALS AND 12 INCH MAINS AND SHALL PROVIDE STAKES FOR THEM AT THEIR PROPER LOCATIONS WITH PILE-TOP MARKS. ANY CHANGE IN LOCATION SHALL BE REQUESTED IN WRITING BY THE OWNER OR HIS REPRESENTATIVE.
 4. THE PRIVATE ENGINEER SHALL FURNISH THE HOUSE LATERAL DEPTH AT THE PROPERTY LINE BELOW THE TOP OF CURB ELEVATION FOR EACH HOUSE LATERAL ON THE GRADE SHEET.
 5. NO REVISIONS SHALL BE MADE IN THESE PLANS WITHOUT THE APPROVAL OF THE COUNTY ENGINEER.
 6. USE STANDARD MANHOLE FRAMES AND COVERS, S-6-117, EXCEPT AS NOTED.
 7. USE STANDARD STRENGTH PIPE EXCEPT AS NOTED.
 8. USE CEMENT MORTAR OR "WEDGE JOINT" ON "SPRUE SEAL" FOR ALL V.C.P. JOINTS PER S.P.C. 2, SECS. 34 & 35.
 9. REFACE ALL TRENCHES WITHIN PAVED AREA TO MEET L.A. COUNTY ROAD DEPT. OR CALIF. STATE HIGHWAY REQUIREMENTS IN ACCORDANCE WITH PERMITS.
 10. ENCASE FOUR FEET OF SEWER AT POINTS OF INTERFERENCE WITH POLES, CASE NO. S-6-172.
 11. HOUSE LATERALS TO BE 6" V.C.P. UNLESS OTHERWISE SPECIFIED.
 12. ALL STRUCTURES SHALL BE BRICK SEWER STRUCTURES, S-6-104, EXCEPT AS NOTED.
 13. FOR ALLOWABLE LEAKAGE TEST USE FORMULA NO. 3, S.P.C. 2, SEC. 34.
 14. MANHOLE TOPS IN UNIMPROVED RIGHTS OF WAY TO BE 6" ABOVE FINISHED GRADE.
 15. THE CONTRACTOR SHALL NOTIFY THE CONSTRUCTION & STORM DRAIN DIVISION BY TELEPHONE, HANSON 9-870, EXT. 342, AT LEAST TWENTY-FOUR HOURS BEFORE STARTING ANY WORK UNDER THIS CONTRACT.
 16. T.B.S. S.P.C. DATED MAY 15, 1959 APPLY TO THE CONSTRUCTION OF THIS PROJECT.

PROFILE ALIGNMENT AND GRADE OF **P.C. 5193**
SANITARY SEWERS PAGE **1**
TO BE CONSTRUCTED IN J.N. 0351.15

TRACT NO 24780
PRIVATE CONTRACT NO. 5193

W.S. 28
1 SHEET, 2 PAGES
SCALE: VERT. 1"=4'
HORIZ. 1"=40'
JUNE, 1959
PREPARED IN THE OFFICES OF

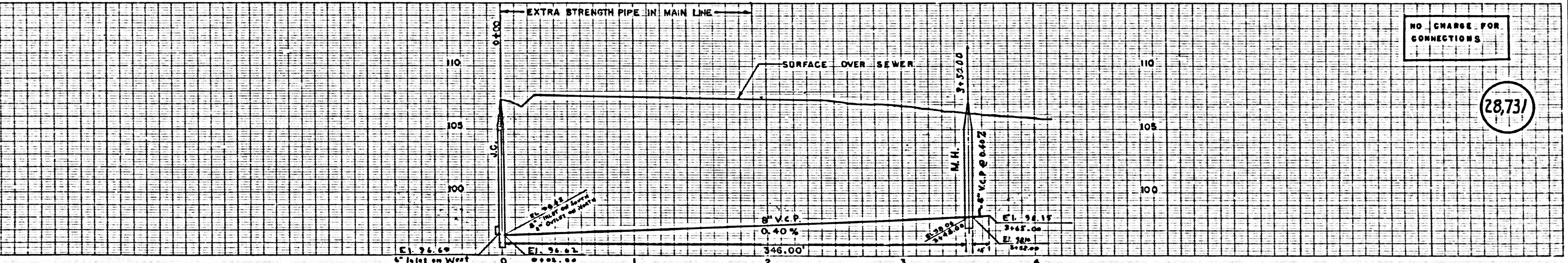
28,730

DENN COMPANY ENGINEERS
By Martin Michael Deane
REG. C. E. NO. 7281
FOR LEGEND SEE PLAN NO. S-A-64

NOTES
GRADES TO WHICH THIS IMPROVEMENT IS TO BE CONSTRUCTED ARE SHOWN ON PLANS AND PROFILE GRADE POINTS FOR TOP OF CURB, CENTER LINE OF STREETS, OR CENTER LINE OF ALLEYS ARE SHOWN BY CIRCLES ON PROFILE AT ALL POINTS BETWEEN MANHOLES. THE GRADE SHALL BE ESTABLISHED SO AS TO CONFORM TO A STRAIGHT LINE DRAWN BETWEEN SAID RESPECTIVE POINTS.
ELEVATIONS ARE IN FEET ABOVE M.S.C. & C.E. SEA LEVEL, DATUM OF 1929.
THIS DRAWING AND THE DATA HEREON ARE HEREBY MADE A PART OF THE SPECIFICATIONS.
WORK SHALL BE CONSTRUCTED ACCORDING TO SPECIFICATIONS ON FILE IN THE OFFICE OF THE COUNTY ENGINEER AND SHALL BE PROSECUTED ONLY IN THE PRESENCE OF THE COUNTY ENGINEER.
BEFORE WORK CAN BE STARTED, THE CONTRACTOR MUST OBTAIN A PERMIT TO EXCAVATE IN THE COUNTY ENGINEER'S ROOM 254 FAN AMERICAN BUILDING, 238 SO. BROADWAY SUFFICIENT TO COVER THE COST OF CONSTRUCTION INSPECTION AND RECORD PLANS.
APPROVAL OF THIS PLAN BY THE COUNTY OF LOS ANGELES DOES NOT CONSTITUTE A REPRESENTATION AS TO THE ACCURACY OF THE LOCATION OF OR THE EXISTENCE OR NON-EXISTENCE OF ANY UNDERGROUND UTILITY PIPE, OR STRUCTURE WITHIN THE LIMITS OF THIS PROJECT. THIS NOTE APPLIES TO ALL PAGES.
IF WORK IS TO BE DONE IN A STATE HIGHWAY, A PERMIT MUST BE OBTAINED FROM THE STATE OF CALIFORNIA, DIVISION OF HIGHWAYS, 128 SOUTH SHAW STREET.

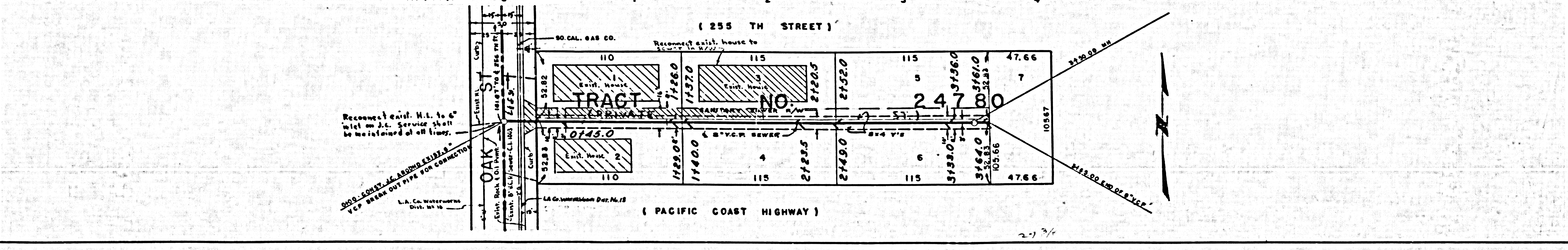
COUNTY OF LOS ANGELES, CALIFORNIA
APPROVED, JOHN A. LAMBE, COUNTY ENGINEER
BY M. J. McLaughlin SANITATION ENGINEER
APPROVED, G. R. COMPTON, CHIEF ENGINEER
BY G. R. Compton CHIEF ENGINEER
CHECKED BY Carl E. Deane OFFICE ENGINEER
OFFICE OF COUNTY ENGINEER, 238 S. BROADWAY, LOS ANGELES, CALIF. REG. C. E. NO. 10,632

P.C. 5193 PAGE 2



NO CHARGE FOR
CONNECTIONS

28,731



Reconnect exist. M.L. to 6" inlet on J.C. Service shall be maintained at all times.
6" V.C.P. BREAK OUT PIPE FOR CONNECTION

5000-GOVEN-16-ADDENDUM-12-1958
L.A. Co. Waterworks Dist. No. 18

(PACIFIC COAST HIGHWAY)