

Bench Mark
Sp.R. in SW corner of conc. spillway of
underpass drain pump. Northwest side of
Santa Fe Railroad underpass of Riverside
Blvd. Pico River. Elev. 156.375'

PICO RIVERA BLDG. DIST. NO. 11.01

PROFILE ALIGNMENT AND GRADE OF P.C. 5195
SANITARY SEWERS PAGE 1
TO BE CONSTRUCTED IN J.N.0860.71

(WARVALE STREET R/W)

PRIVATE CONTRACT NO. 5195

W.S. 96

1 SHEETS, 2 PAGES

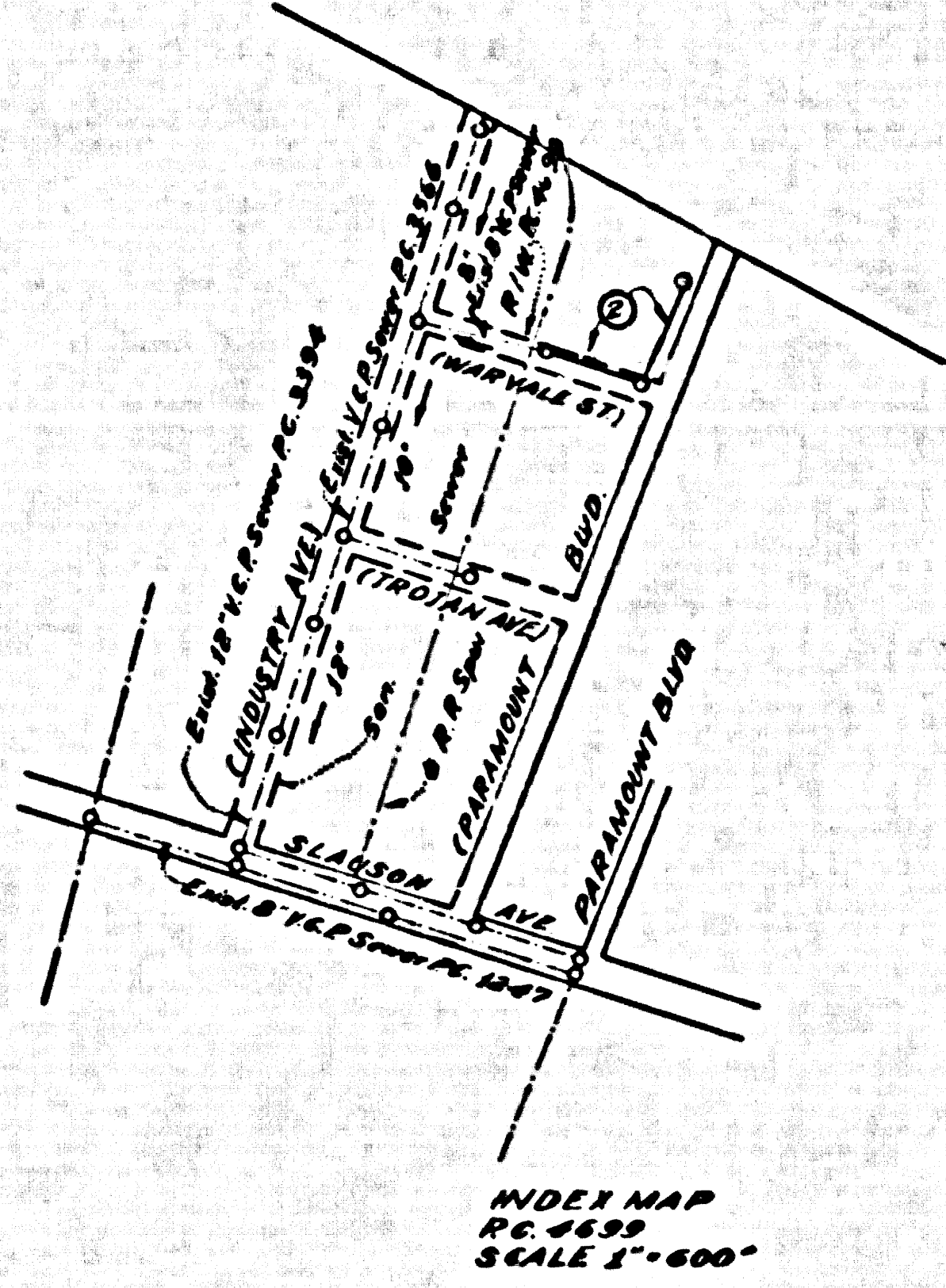
SCALE, VERT. 1" = 4' HORIZ. 1" = 20'

SEPT, 1959

28294

PREPARED IN THE OFFICES OF
CONLEY ENGINEERING CO.

FOR LEGEND SEE PLAN NO. S-A-64



- NOTES
- PROFILES SHOWN ON THE PROPERTY LINE OR PROPERTY LINES PRODUCED BY SURVEY ANGLES TO THE SEWER LINE AT THE CORNER LINE OF EACH BARRIAGE.
 - NO REPRESENTATIVE OF THE CITY ENGINEER WILL SURVEY OR LAYOUT ANY PORTION OF THE WORK.
 - THE OWNER OR HIS AUTHORIZED REPRESENTATIVE SHALL FURNISH THE CITY ENGINEER WITH GRADE SHEETS AND LAYOUT FOR ALL HOUSE LATERALS AND Y BRANCHES AND SHALL PROVIDE STAKES FOR THEM AT THEIR PROPER LOCATIONS WITH STATIONING PLAINLY MARKED. ANY CHANGE IN LOCATION SHALL BE INDICATED IN WRITING BY THE OWNER OR HIS REPRESENTATIVE.
 - NO REVISIONS SHALL BE MADE IN THESE PLANS WITHOUT THE APPROVAL OF THE CITY ENGINEER.
 - USE STANDARD MANHOLE FRAMES AND COVERS, S-A-117.
 - USE STANDARD STRENGTH PIPE.
 - USE CONCRETE MANHOLE "WEDGE-LOCK" OR "SPEED-SEAL" FOR ALL STIFFENED CLAY PIPE JOINTS PER SPEC. SEC. 34.148.
 - STORAGE ALL TRUCKS WITHIN PAVED AREA TO MEET L.A. COUNTY BOARD DEPT. OR CALIF. STATE HIGHWAY DEPT. REQUIREMENTS IN ACCORDANCE WITH PERMITS.
 - INDICATE FOUR FEET OF REINFC WITH POLES, CASE III, S.A. 172.
 - HOUSE LATERALS TO BE CONSTRUCTED WITH 1/4" RISE PER FOOT TO R/W LINE THAT OBTAIN ELEVATION AT POINTS.
 - ALL STRUCTURES SHALL BE BRICK SEWER STRUCTURES, S-A-104.
 - FOR ALLOWABLE LEAKAGE TEST USE FORMULA NO. 1 PER SPEC. SEC. 34.
 - MANHOLE TOPS IN UNIMPROVED AREAS SHALL BE 6" ABOVE FINISHED GRADE.
 - THE PRIVATE ENGINEER IS TO FURNISH THE HOUSE LATERAL DEPTH AT THE R/W LINE BELOW THE ELEVATION OF CENTER LINE OF R/W FOR EACH HOUSE LATERAL, ON THE GRADE SHEET.
 - THE CONTRACTOR SHALL NOTIFY THE CONSTRUCTION AND STORM DRAIN DIVISION BY TELEPHONE, MADISON 9-4763 EXT 362, AT LEAST 24 HOURS BEFORE STARTING ANY WORK UNDER THIS CONTRACT.

NO CHARGE FOR CONNECTIONS
FOR CONNECTIONS
Ed. Hickland 10-9-59

APPROVED BY: *John L. Epton* 10-9-59
INDUSTRIAL WASTE

NOTES

GRADE TO WHICH THIS IMPROVEMENT IS TO BE CONSTRUCTED ARE SHOWN ON PLANS AND PROFILES. GRADE POINTS FOR TOP OF COVERS, CENTER LINE OF STREETS, OR CENTER LINE OF ALLEYS ARE SHOWN BY CIRCLES ON PROFILES BETWEEN BENCHMARK POINTS THE GRADE SHALL BE ESTABLISHED SO AS TO CONFORM TO A STRAIGHT LINE DRAWN BETWEEN SAID BENCHMARK POINTS.

ELEVATIONS ARE IN FEET ABOVE U.S.C. & G.S. MEAN SEA LEVEL DATUM OF 1929.

THESE DRAWINGS AND THE DATA HEREON ARE HEREBY MADE A PART OF THE SPECIFICATIONS.

WORK SHALL BE CONSTRUCTED ACCORDING TO SPECIFICATIONS ON FILE IN THE OFFICE OF THE CITY ENGINEER AND SHALL BE PROSECUTED ONLY IN THE PRESENCE OF THE CITY ENGINEER.

BEFORE WORK CAN BE STARTED, THE CONTRACTOR MUST OBTAIN A PERMIT TO EXCAVATE IN THE CITY OF PICO RIVERA FROM THE S. A. COUNTY BOARD OF PUBLIC UTILITIES AND MAKE A REPORT WITH THE CITY OF PICO RIVERA, 600 S. 14th STREET, PICO RIVERA, CALIFORNIA, SUBMITTING TO COVER THE WORK PLAN.

APPROVAL OF THIS PLAN BY THE CITY OF PICO RIVERA DOES NOT CONSTITUTE A REPRESENTATION AS TO THE ACCURACY OF THE LOCATION OF OR THE EXISTENCE OR NON-EXISTENCE OF ANY UNDERGROUND UTILITY PIPE OR STRUCTURE WITHIN THE LIMITS OF THIS PROJECT. THIS NOTE APPLIES TO ALL PAGES.

IF WORK IS TO BE DONE IN A STATE HIGHWAY, A PERMIT MUST BE OBTAINED FROM THE STATE OF CALIFORNIA, DIVISION OF HIGHWAYS, 130 SOUTH SPRING STREET.

CITY OF PICO RIVERA, CALIFORNIA

APPROVED, JOHN A. LAMBE, CITY ENGINEER

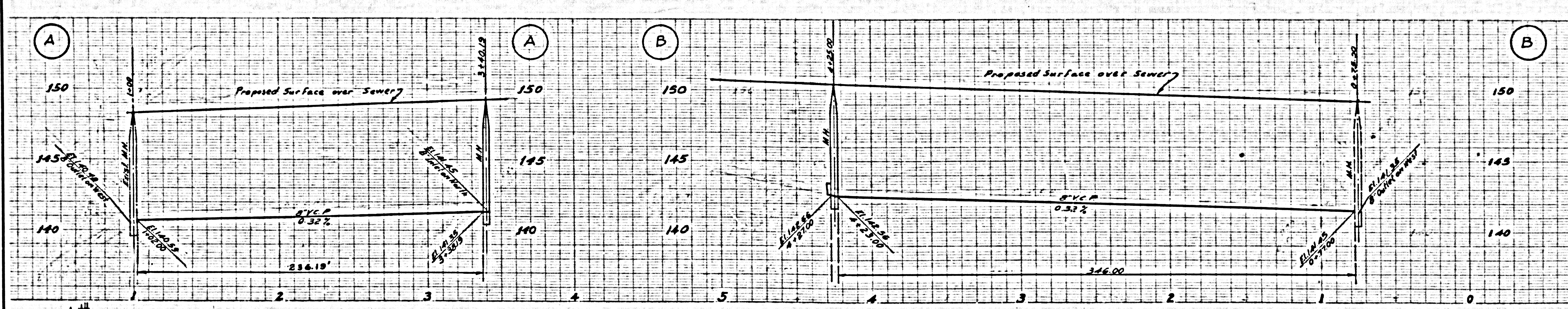
APPROVED, A. M. RAWIN, CHIEF ENGINEER
CO. SAN. DIST. NO. 2

BY: *E. P. Bennett*
RES'Y SANITATION ENGINEER

CHECKED BY: *John L. Epton*
OFFICE ENGINEER

OFFICE OF CITY ENGINEER, S.A. C. & G. NO. 464

SUBMITTED BY: *John L. Epton* 10-9-59
LOS ANGELES REGIONAL ENGINEER, REG. C. & G. NO. 3871



P.C. 5195 PAGE 2
NO CHARGE FOR CONNECTIONS
28295

