

PARAMOLINT BLDG. DIST. NO. 4,04

PROFILE ALIGNMENT AND GRADE OF P.C. 5199
 SANITARY SEWERS PAGE 1
 TO BE CONSTRUCTED IN
 EL CAMINO AVENUE

PRIVATE CONTRACT NO. 5199
 W.S. 32

1 SHEET, 2 PAGES
 SCALE: VERT. 1"=4'
 HORIZ. 1"=40'

JULY, 1959

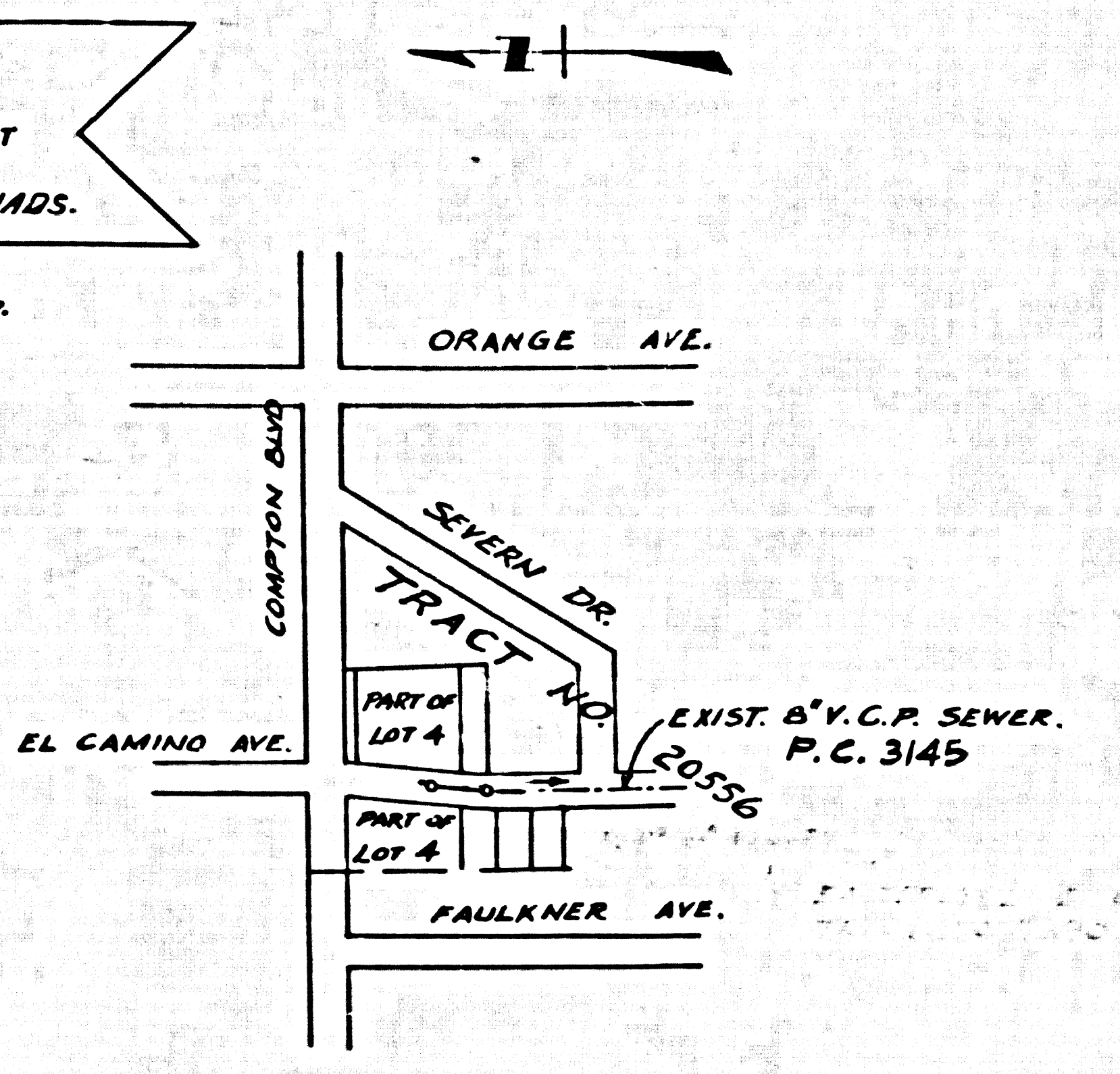
29,055

PREPARED IN THE OFFICES OF
 WM. D. COPPEY ASSOCIATES INC.
 849 SO. OLIVE STREET SUITE 1123
 LOS ANGELES 4, CALIFORNIA

FOR LEGEND SEE PLAN NO. S-A-64

BENCH MARK: SY. 1932,
 ELEV. 69.713 LEAD & TACK IN WEST CURB OF
 EL CAMINO AVE. 6' NORTH OF CURB RETURN AT
 NORTHWEST CORNER OF COMPTON BLVD &
 EL CAMINO AVE. BASELINE SOUTHWEST & BELL QUADS.

Note: Subtract 0.826 from above elevation
 for SY 1932-A, reset at same location.



INDEX MAP
 SCALE: 1"=300'
 P.C. 5199

- NOTES
1. PROVIDE STAKES ON THE PROPERTY LINE OR PROPERTY LINES PRODUCED AT RIGHT ANGLES TO THE SEWER LINE AT THE CENTER LINE OF EACH MANHOLE.
 2. NO REPRESENTATIVE OF THE CITY ENGINEER WILL SURVEY OR LAY OUT ANY PORTION OF THE WORK.
 3. THE OWNER OR HIS AUTHORIZED REPRESENTATIVE SHALL FURNISH THE CITY ENGINEER WITH GRADE SHEETS AND STATIONING FOR ALL HOUSE LATERALS AND Y BRANCHES AND SHALL PROVIDE STAKES FOR THEM AT THEIR PROPER LOCATIONS WITH STATIONING PLAINLY MARKED. ANY CHANGES IN LOCATION SHALL BE REQUESTED IN WRITING BY THE OWNER OR HIS REPRESENTATIVE.
 4. THE PRIVATE ENGINEER SHALL FURNISH THE HOUSE LATERAL DEPTH AT THE PROPERTY LINE BELOW THE TOP OF CURB ELEVATION FOR EACH HOUSE LATERAL ON THE GRADE SHEET.
 5. NO REVISIONS SHALL BE MADE IN THESE PLANS WITHOUT THE APPROVAL OF THE COUNTY ENGINEER.
 6. USE STANDARD MANHOLE FRAMES AND COVERS, S-117.
 7. USE STANDARD STRENGTH PIPE.
 8. USE CEMENT MORTAR OR "WEDGE LOCK" OR "SPEED SEAL" FOR ALL V.C.P. JOINTS PER SPEC., SECT. 36 & 48.
 9. RESURFACE ALL TRENCH WITHIN PAVED AREA TO MEET L.A. COUNTY ROAD DEPT. OR CALIF. STATE HIGHWAY REQUIREMENTS IN ACCORDANCE WITH PERMITS.
 10. ENCASE FOUR FEET OF SEWER AT POINTS OF INTERFERENCE WITH POLES, CASE III, S-172.
 11. HOUSE LATERALS TO BE CONSTRUCTED WITH 1/4" RISE PER FOOT TO PROPERTY LINE.
 12. ALL STRUCTURES SHALL BE BRICK SEWER STRUCTURES, S-104.
 13. FOR ALLOWABLE LEAKAGE TEST USE FORMULA NO. 1, SPEC., SEC. 54.
 14. MANHOLE TOPS IN UNIMPROVED RIGHTS-OF-WAY TO BE SIX INCHES ABOVE FINISHED GRADE.
 15. THE CONTRACTOR SHALL NOTIFY THE CONSTRUCTION & STORM DRAIN DIVISION BY TELEPHONE, MARSHEN 9-870, EXT. 343, AT LEAST TWENTY-FOUR HOURS BEFORE STARTING ANY WORK UNDER THIS CONTRACT.

COLLECT CHARGES
 AS INDICATED
 B.F. Harding 8-19-59

NOTE: GRADES TO WHICH THIS IMPROVEMENT IS TO BE CONSTRUCTED ARE SHOWN ON PLANS AND PROFILE. GRADE POINTS FOR TOP OF CURB, CENTER LINE OF STREETS, OR CENTER LINE OF ALLEYS ARE SHOWN BY CIRCLES ON PROFILE. AT ALL POINTS BETWEEN DESIGNATED POINTS THE GRADE SHALL BE ESTABLISHED SO AS TO CONFORM TO A STRAIGHT LINE DRAWN BETWEEN SAID DESIGNATED POINTS.

ELEVATIONS ARE IN FEET ABOVE U.S.C. & G.S. SEA LEVEL DATUM OF 1929.

THIS DRAWING AND THE DATA HEREON ARE HEREBY MADE A PART OF THE SPECIFICATIONS.

WORK SHALL BE CONSTRUCTED ACCORDING TO SPECIFICATIONS ON FILE IN THE OFFICE OF THE CITY ENGINEER AND SHALL BE PROSECUTED ONLY IN THE PRESENCE OF THE CITY ENGINEER.

BEFORE WORK CAN BE STARTED, THE CONTRACTOR MUST OBTAIN A PERMIT TO EXCAVATE IN CITY STREETS FROM THE L.A. COUNTY ROAD DEPT., DISTRICT OFFICE NO. 46. A \$100 DEPOSIT WITH THE CITY OF PARAMOLINT IS NECESSARY TO COVER THE COST OF CONSTRUCTION INSPECTION AND SIGN PLANS.

APPROVAL OF THIS PLAN BY THE COUNTY OF LOS ANGELES DOES NOT CONSTITUTE A REPRESENTATION AS TO THE ACCURACY OF THE LOCATION OR OF THE EXISTENCE OR NON-EXISTENCE OF ANY UNDERGROUND UTILITY PIPE, OR STRUCTURE WITHIN THE LIMITS OF THIS PROJECT. THIS NOTE APPLIES TO ALL PAGES.

IF WORK IS TO BE DONE IN A STATE HIGHWAY, A PERMIT MUST BE OBTAINED FROM THE STATE OF CALIFORNIA, DIVISION OF HIGHWAYS, 120 SOUTH BRIDGE STREET.

CITY OF PARAMOLINT, CALIFORNIA

APPROVED, JOHN A. LAMBE, CITY ENGINEER

APPROVED, C.E. COMPTON, CHIEF ENGINEER
 CO. SAN. DIST. NO. 2

BY *[Signature]* SANITATION ENGINEER

CHECKED BY *[Signature]* OFFICE ENGINEER

OFFICE OF CITY ENGINEER, P.O. C. & E. NO. 9416

