

PUENTE BLDG. DIST. NO. 2

PROFILE ALIGNMENT AND GRADE OF P.C. 5202
 SANITARY SEWERS PAGE 1
 TO BE CONSTRUCTED IN J.N. 0351.22

TRACT N^o 25044

PRIVATE CONTRACT NO. 5202

W.S. 38

5 SHEETS, 10 PAGES

SCALE: VERT. 1" = 4' HORIZ. 1" = 40' JULY, 1959

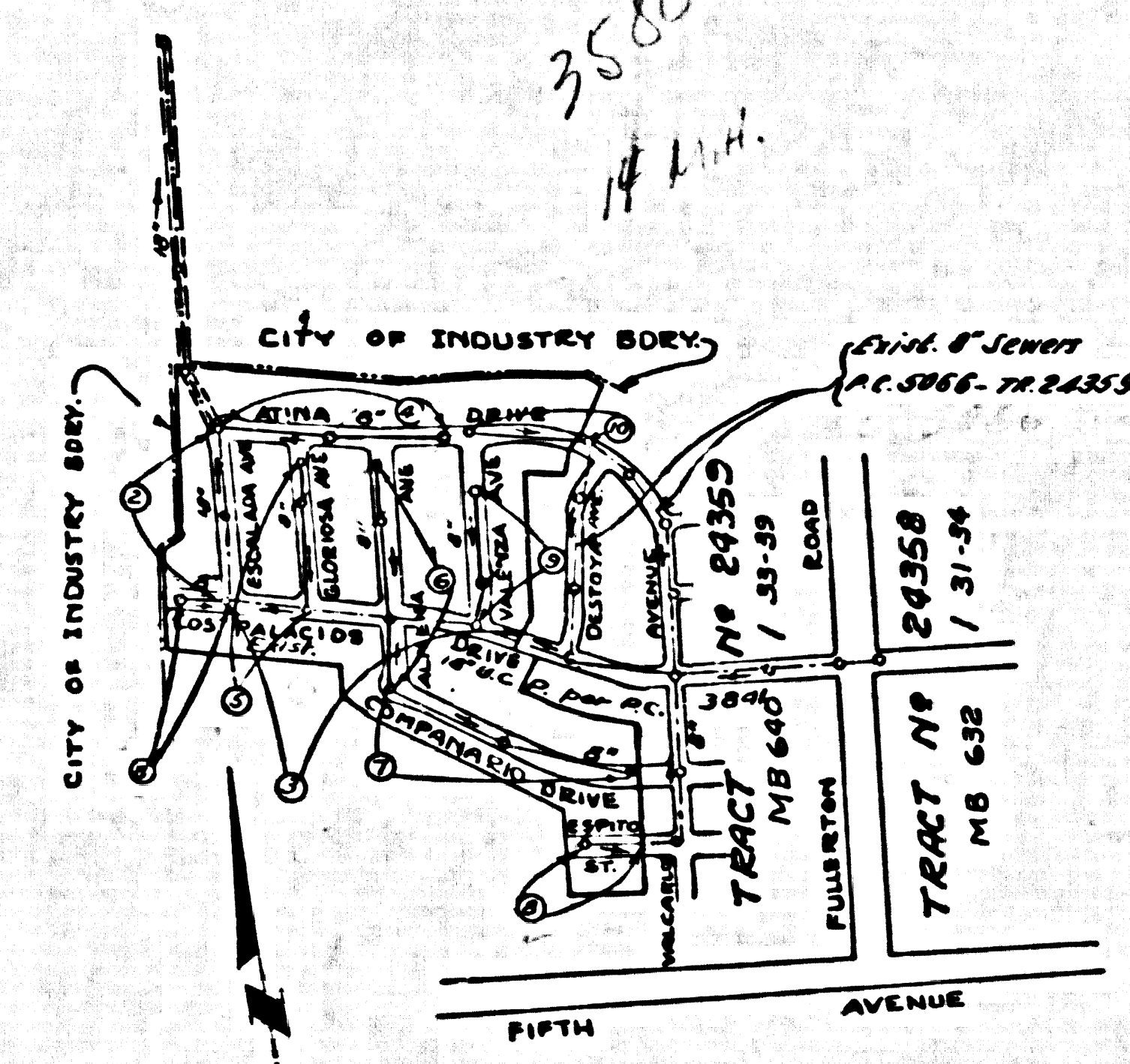
PREPARED IN THE OFFICES OF

NATIONAL ENGINEERING COMPANY

BY Edward J. Peterson REG. G. & NO. 3828 E.O. 31291

FOR LEGEND SEE PLAN NO. S-A-64

28,522



INDEX MAP
 TRACT N^o 25044
 Scale: 1" = 600'
 P.C. 5202

- NOTES:
1. PROVIDE STAKES ON THE PROPERTY LINE OR PROPERTY LINES PRODUCED AT RIGHT ANGLES TO THE SEWER LINE AT THE CENTER LINE OF EACH MANHOLE.
 2. NO REPRESENTATIVE OF THE COUNTY ENGINEER WILL SURVEY OR LAY OUT ANY PORTION OF THE WORK.
 3. THE OWNER OR HIS AUTHORIZED REPRESENTATIVE SHALL FURNISH THE COUNTY ENGINEER WITH GRADE SHEETS AND STATIONING FOR ALL HOUSE LATERALS AND Y BRANCHES AND SHALL PROVIDE STAKES FOR THEM AT THEIR PROPOSED LOCATIONS WITH STATIONING PLAINLY MARKED. ANY CHANGE IN LOCATION SHALL BE REQUESTED IN WRITING BY THE OWNER OR HIS REPRESENTATIVE.
 4. THE PRIVATE ENGINEER SHALL FURNISH THE HOUSE LATERAL DEPTH AT THE PROPERTY LINE BELOW THE TOP OF CURB ELEVATION FOR EACH HOUSE LATERAL ON THE GRADE SHEET.
 5. NO REVISIONS SHALL BE MADE IN THESE PLANS WITHOUT THE APPROVAL OF THE COUNTY ENGINEER.
 6. USE STANDARD MANHOLE FRAMES AND COVERS, S-117.
 7. USE STANDARD STRENGTH PIPE EXCEPT AS NOTED.
 8. USE CEMENT MORTAR OR "WEDGE-LOCK" OR "SPEED-SEAL" FOR ALL V.C.P. JOINTS PER SPEC'S, SECS. 36 & 40.
 9. RESURFACE ALL TRENCH WITHIN PAVED AREA TO MEET L.A. COUNTY ROAD DEPT. OR CALIF. STATE HIGHWAY REQUIREMENTS IN ACCORDANCE WITH PERMITS.
 10. ENCASE FOUR FEET OF SEWER AT POINTS OF INTERFERENCE WITH POLES, CASE III, S-117.
 11. HOUSE LATERALS TO BE CONSTRUCTED WITH INVERTS AT PROPERTY LINE 6 FEET BELOW CURB GRADE.
 12. ALL STRUCTURES SHALL BE BRICK SEWER STRUCTURES, S-104.
 13. FOR ALLOWABLE LEAKAGE TEST USE FORMULA NO. 1, SPEC'S, SEC. 54.
 14. MANHOLE TOPS IN UNIMPROVED RIGHTS-OF-WAY TO BE SIX INCHES ABOVE FINISHED GRADE.
 15. THE CONTRACTOR SHALL NOTIFY THE CONSTRUCTION & STORM DRAIN DIVISION BY TELEPHONE, MADISON 9-870, EXT. 362, AT LEAST TWENTY-FOUR HOURS BEFORE STARTING ANY WORK UNDER THIS CONTRACT.
 16. RECONSTRUCT EXISTING M.P.'S TO EXISTING UNDERGROUND PLANS.
 17. STANDARD SPECIFICATIONS DATED MAY 15, 1958 APPLY IN THE CONSTRUCTION OF THIS PROJECT.
 18. (a) NO CONSTRUCTION WILL BE PERMITTED IN FILLED AREAS UNLESS ACCEPTABLE CERTIFICATION IS SUBMITTED TO THE CONSTRUCTION DIVISION OF THE COUNTY ENGINEER'S DEPARTMENT THAT RELATIVE COMPACTION IS GREATER THAN 80%.
 - (b) IF COMPACTION IS LESS THAN 80%, THE SEWER MUST BE GRADED AS SHOWN ON PLANS PER S-10-165.
 - (c) IF COMPACTION IS GREATER THAN 80%, GRADLINE IS NOT REQUIRED UNLESS JOINT COMPILING, WEDGE-LOCK OR "SPEED-SEAL" MUST BE SUBSTITUTED FOR CEMENT MORTAR FOR ALL JOINTS IN FILLED AREAS.

BENCH MARK 44-12
 Fifth Ave. Anaheim & Puente Rd., & Fullerton Rd.,
 13.3' E. and 12.5' S. of Intersection of Fifth Ave.
 and Fullerton Rd. on N1/4 Prologation of E1/4 Edge
 of Fullerton Rd. Pavement a Std. C.S. Mon. in Man-
 hole Stamped "B.M. 44-12 1955, RE 65"
 P.B. 1564-119, 1956 adj. Elev. 483.600

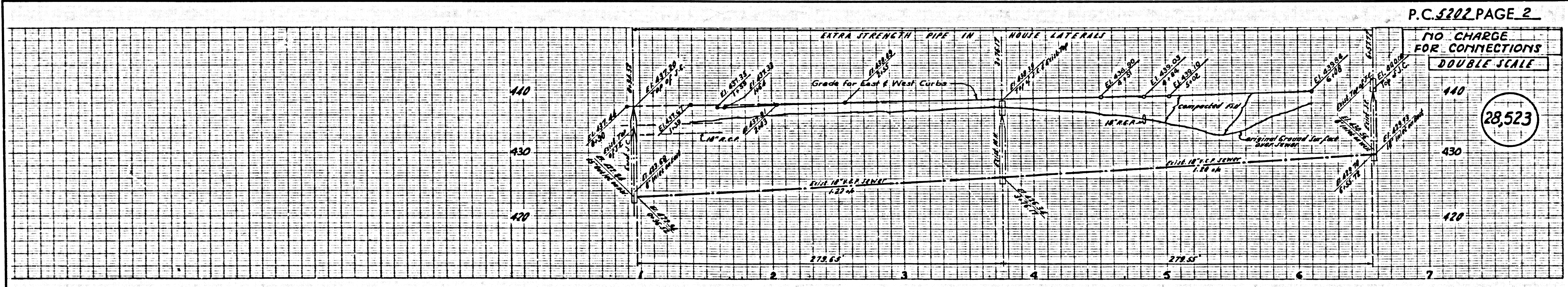
NO CHARGE FOR CONNECTIONS
 7/27/59 J.P. 7-23-59

NOTE:
 GRADES TO WHICH THIS IMPROVEMENT IS TO BE CONSTRUCTED ARE SHOWN ON PLANS AND PROFILES. GRADE POINTS FOR TOP OF CURBS, CENTER LINE OF STREETS, OR CENTER LINE OF ALLEYS ARE SHOWN BY CIRCLES ON PROFILES. AT ALL POINTS BETWEEN DESIGNATED POINTS THE GRADE SHALL BE ESTABLISHED SO AS TO CONFORM TO A STRAIGHT LINE DRAWN BETWEEN SAID DESIGNATED POINTS.
 ELEVATIONS ARE IN FEET ABOVE U.S.C. & G.S. SEA LEVEL DATUM OF 1929.
 THIS DRAWING AND THE DATA HEREON ARE HEREBY MADE A PART OF THE SPECIFICATIONS.
 WORK SHALL BE CONSTRUCTED ACCORDING TO SPECIFICATIONS ON FILE IN THE OFFICE OF THE COUNTY ENGINEER AND SHALL BE PROTECTED ONLY IN THE PRESENCE OF THE COUNTY ENGINEER.
 BEFORE WORK CAN BE STARTED, THE CONTRACTOR MUST OBTAIN A PERMIT TO EXCAVATE IN COUNTY STREETS FROM THE L.A. COUNTY ROAD DEPT., DISTRICT OFFICE NO. 1, AND MAKE A DEPOSIT WITH THE COUNTY ENGINEER, ROOM 324 PAM AMERICAN BUILDING, 128 E.D. BROADWAY SUFFICIENT TO COVER THE COST OF CONSTRUCTION INSPECTION AND RECORD PLANS.
 APPROVAL OF THIS PLAN BY THE COUNTY OF LOS ANGELES DOES NOT CONSTITUTE A REPRESENTATION AS TO THE ACCURACY OF THE LOCATION OF OR THE EXISTENCE OR NON-EXISTENCE OF ANY UNDERGROUND UTILITY PIPES, OR STRUCTURE WITHIN THE LIMITS OF THIS PROJECT. THIS NOTE APPLIES TO ALL PAGES.
 IF WORK IS TO BE DONE IN A STATE HIGHWAY, A PERMIT MUST BE OBTAINED FROM THE STATE OF CALIFORNIA, DIVISION OF HIGHWAYS, 128 SOUTH SPRING STREET.

COUNTY OF LOS ANGELES, CALIFORNIA
 APPROVED, JOHN A. LAMBE, COUNTY ENGINEER
 APPROVED, E. R. CORPUS, CHIEF ENGINEER
 CO. SEAL DIST. NO. 12
 BY E. J. Peterson SANITATION ENGINEER
 BY J. P. Peterson OFFICE ENGINEER
 CHECKED BY J. C. Duda 7-21-59
 OFFICE OF COUNTY ENGINEER, BLDG. C. & NO. 3605

SUBMITTED: W. C. Sandifer
 JAN BIRNS, REGIONAL ENGINEER.

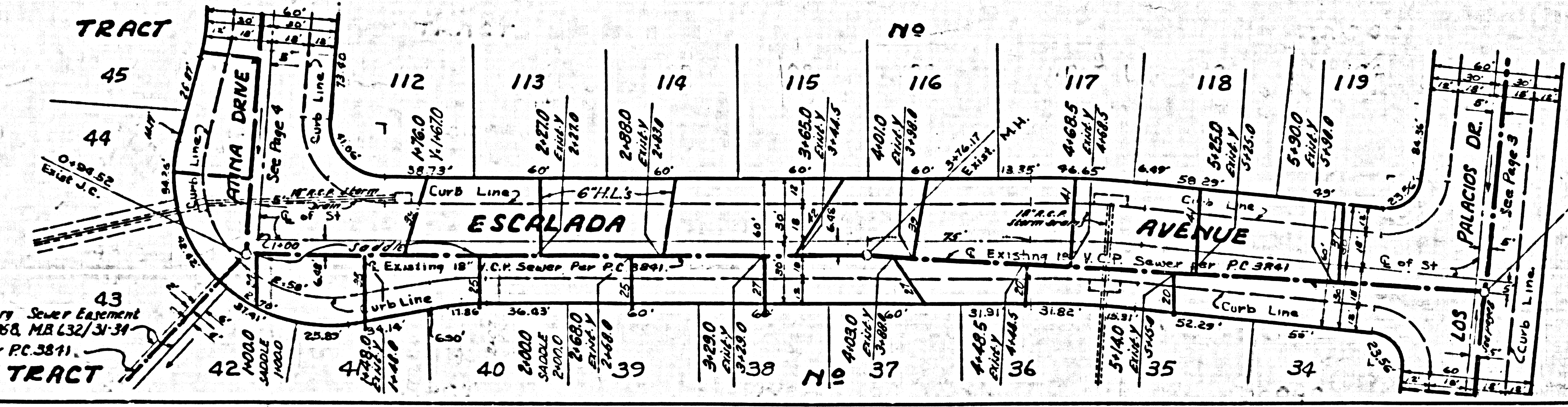
NOTE: "WEDGE-LOCK" JOINTS USED IN FILLED GROUND.



P.C. 5202 PAGE 2

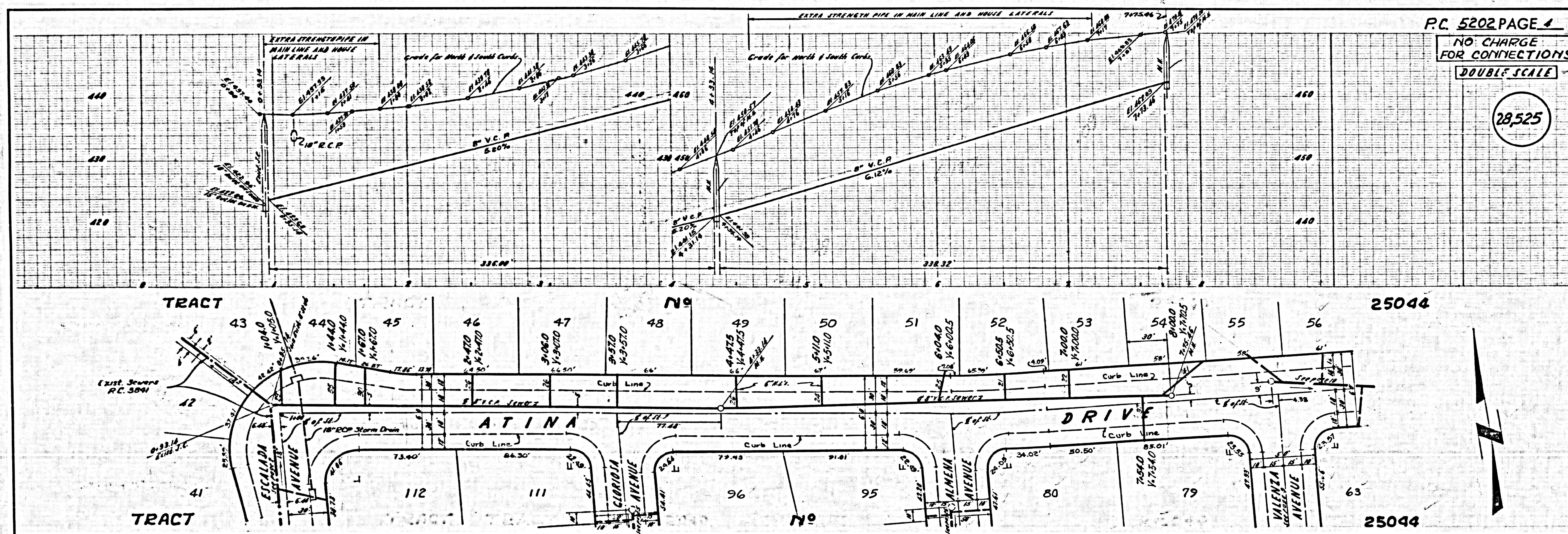
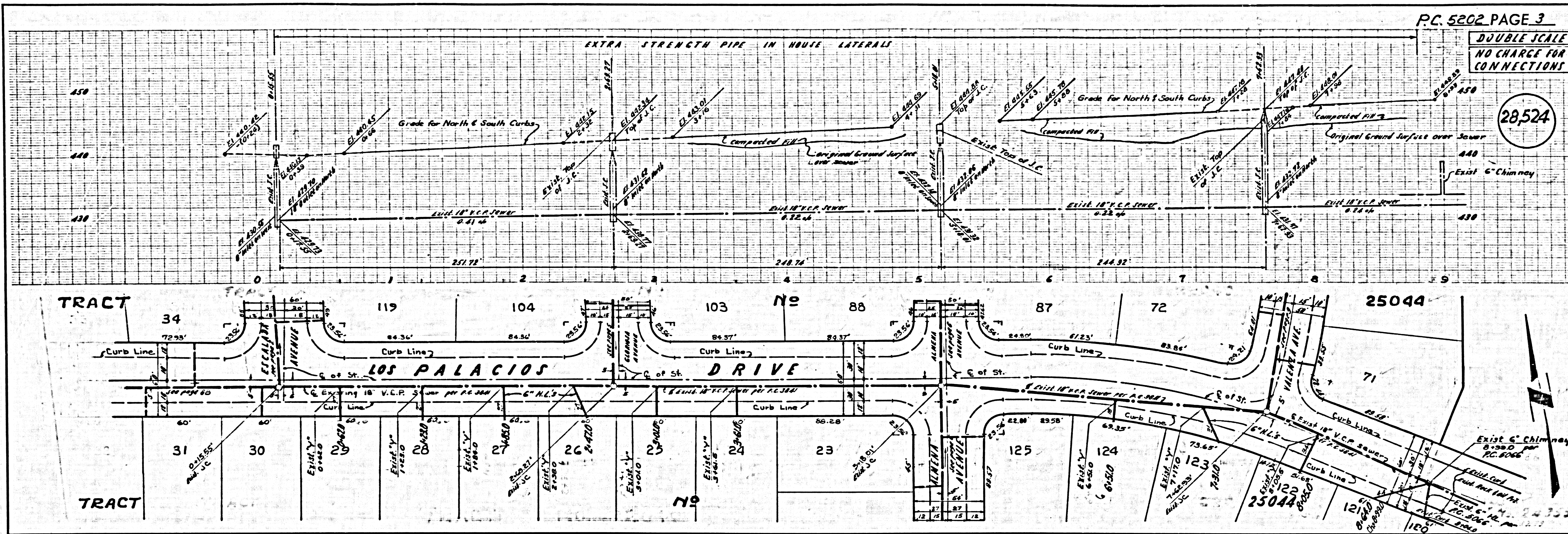
NO CHARGE FOR CONNECTIONS
 DOUBLE SCALE

28,523

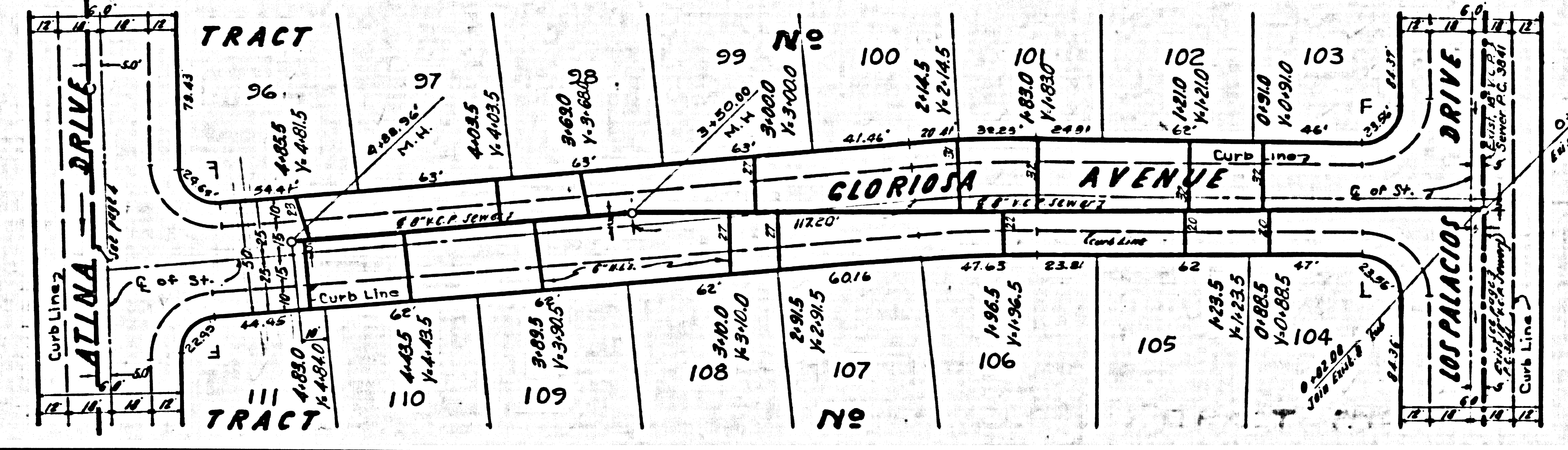
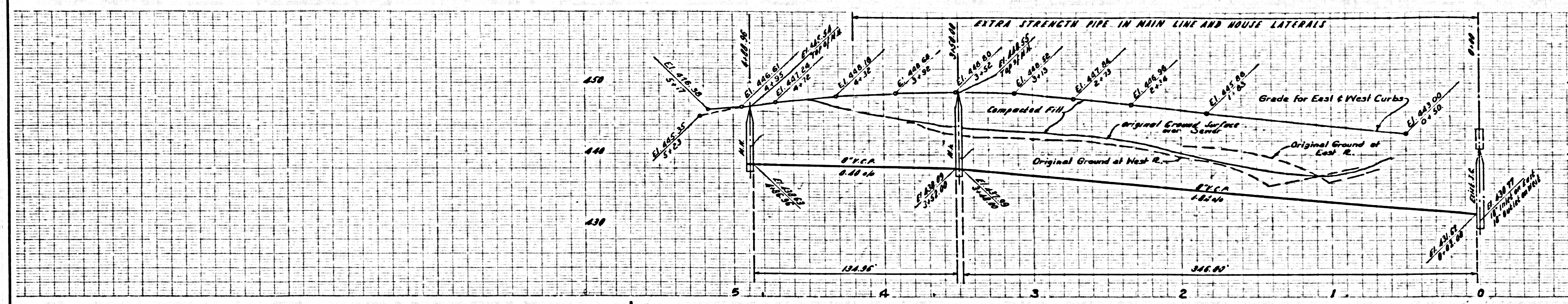


Exist. 6" Sanitary Sewer Easement
 Per Tract N^o 21350, MB 132/31-34
 Exist. 15 V.C.P. per P.C. 3811.

25044



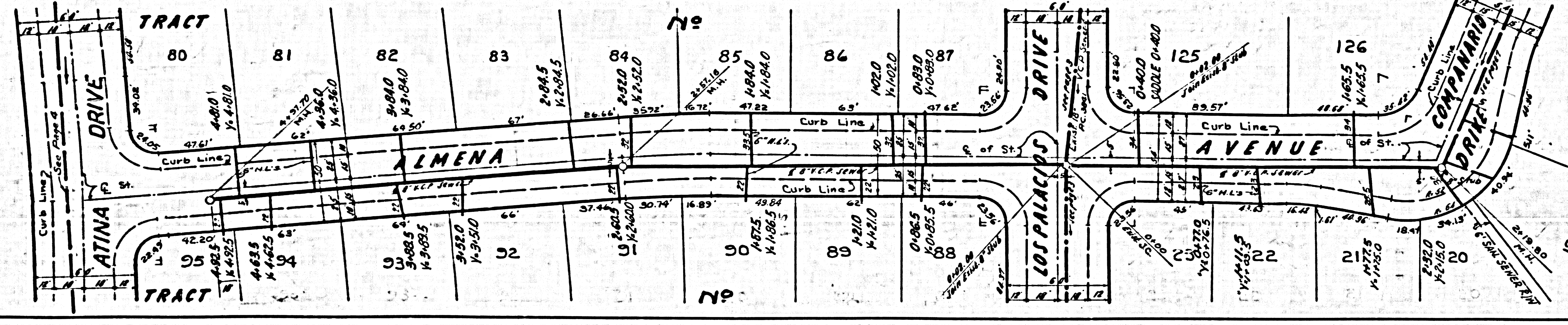
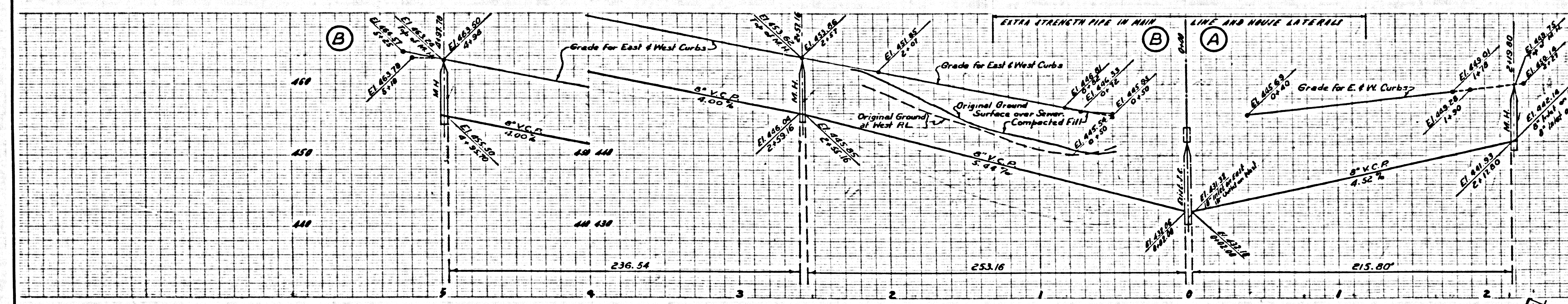
28,526



25044

25044

28,527

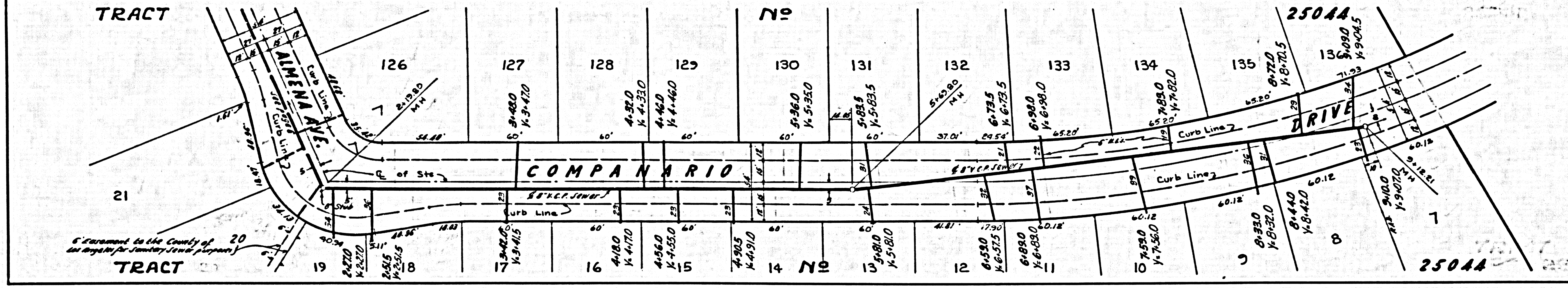
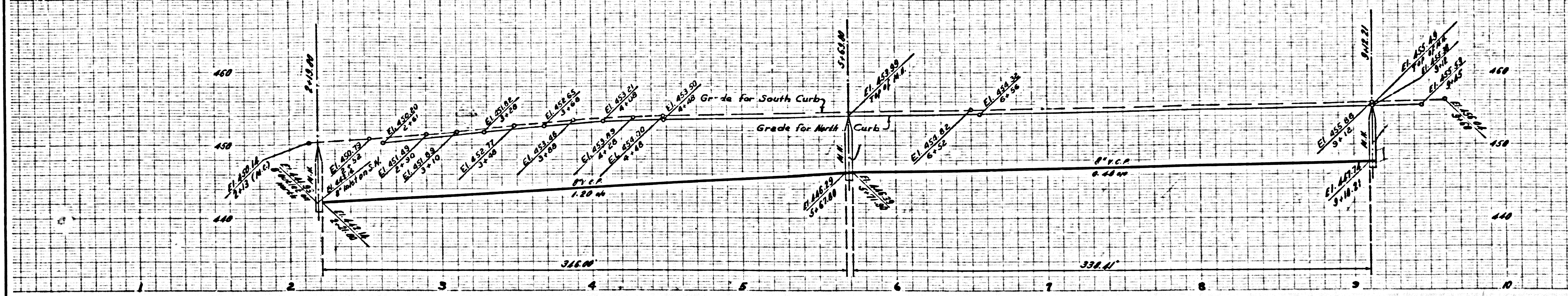


25044

25044

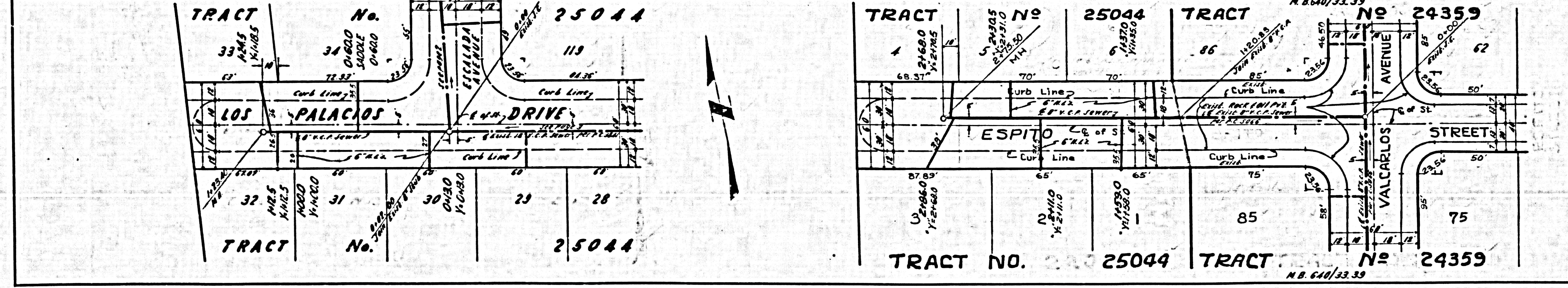
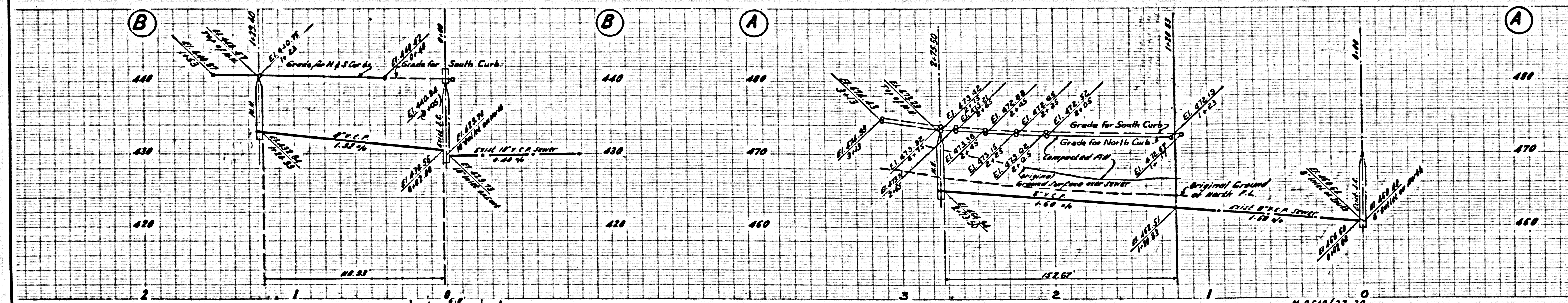
NO CHARGE FOR CONNECTIONS
DOUBLE SCALE

28,528

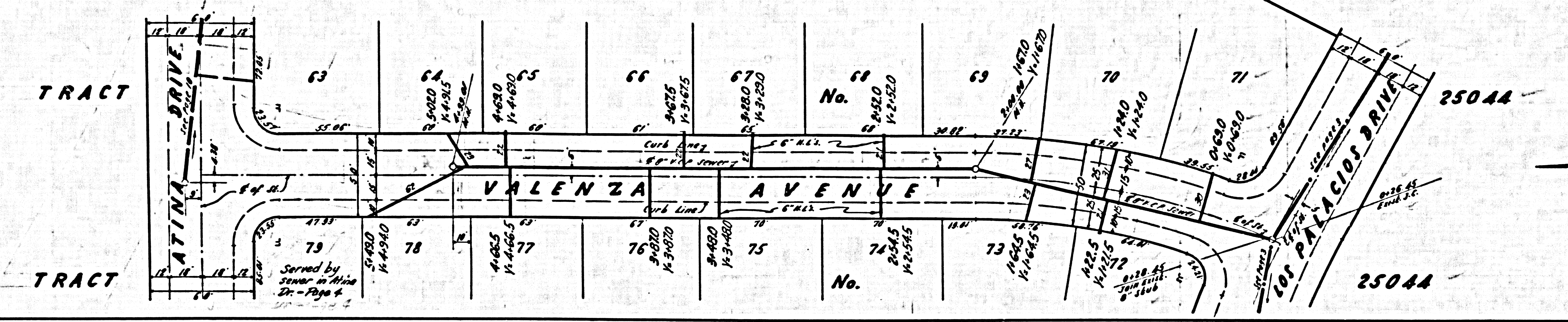
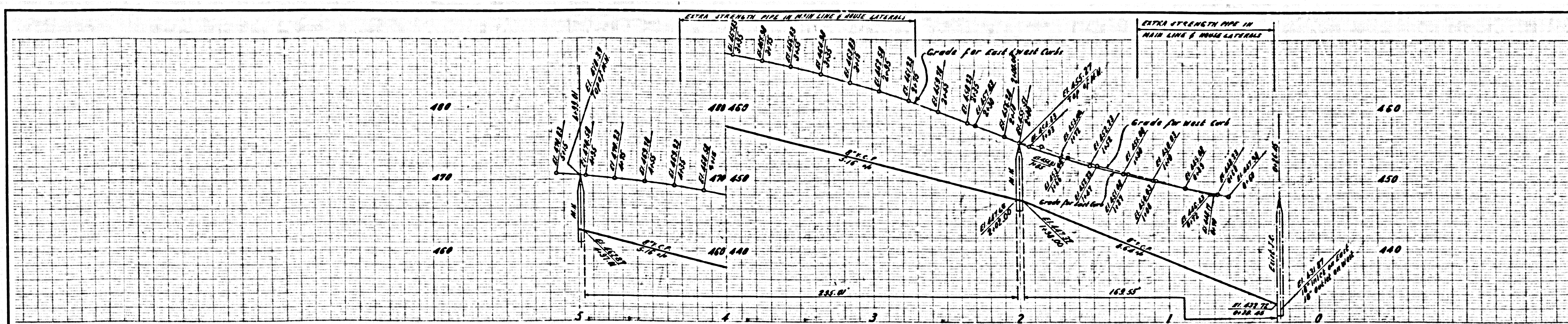


NO CHARGE FOR CONNECTIONS
DOUBLE SCALE

28,529



28,530



28,531

