

B.M. 5Y-4035 Elev. 146.191 C.S.P. 1955 Adj.
L.V. B. MAIL, WEST CURB, WITWELLER AVE.,
100' S. OF E. WITWELLER DR. Opposite
P.R. # 1065580 E. (LA MIRADA QUAD)

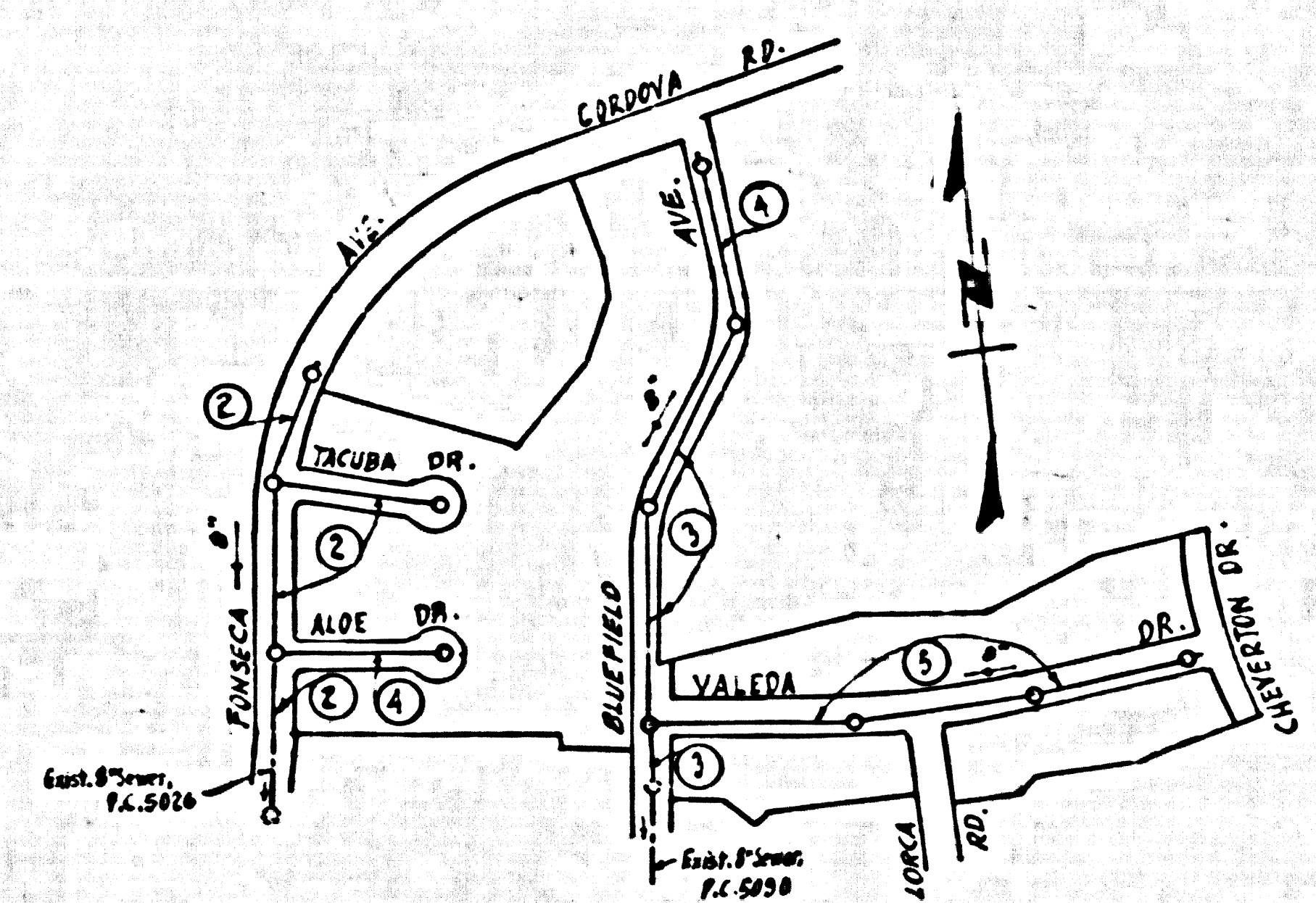
NORWALK BLDG. DIST. NO. 4.2

PROFILE ALIGNMENT AND GRADE OF P.C. 5203
SANITARY SEWERS PAGE 1
TO BE CONSTRUCTED IN J.N. 0351.23

TRACT N° 24081

PRIVATE CONTRACT NO. 5203
JOB NUMBER 0351.23
W.S. 34

3 SHEETS, 5 PAGES
SCALE: VERT. 1" = 4' HORIZ. 1" = 40' APRIL, 1959 (28563)
PREPARED IN THE OFFICES OF
JENNINGS ENGINEERING CO.
By *S. J. Jennings*
REG. C. E. NO. 7854
FOR LEGEND SEE PLAN NO. S-A-64



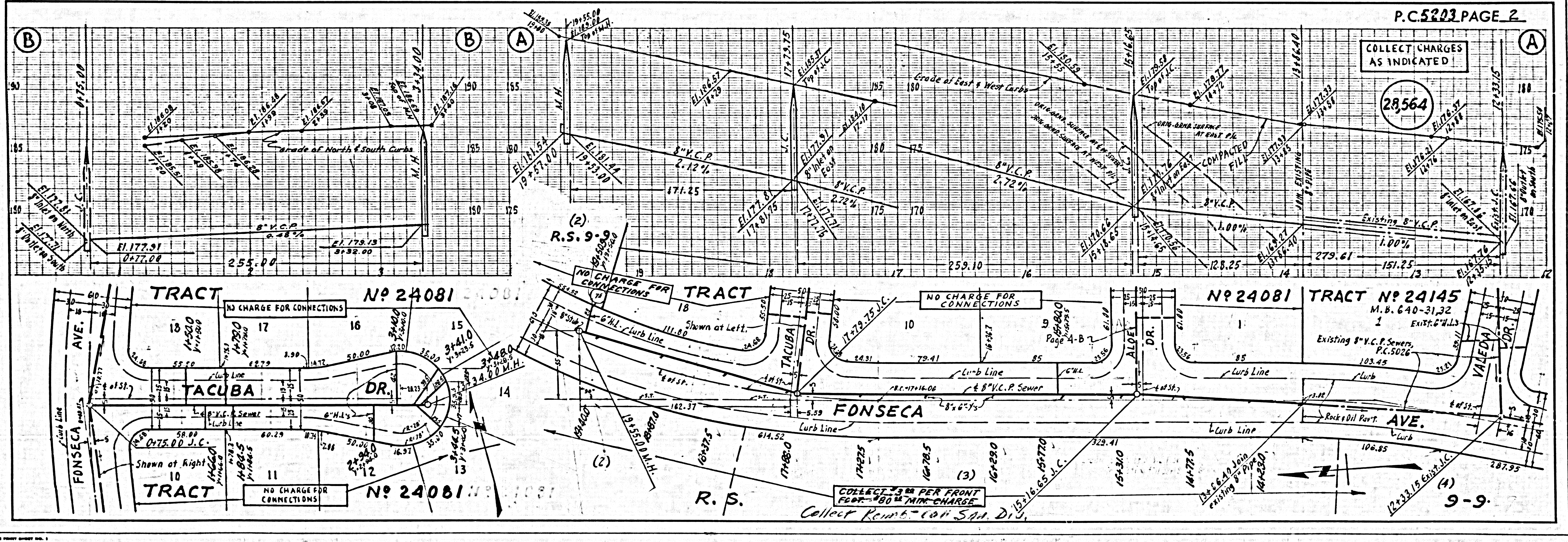
INDEX MAP
P.C. 5203
J.N. 0351.23
TRACT N° 24081
SCALE: 1" = 300'

COLLECT CHARGES AS INDICATED
C. J. Wickland 9-17-59

- NOTES
1. PROVIDE STAKES ON THE PROPERTY LINE OR PROPERTY LINES PRODUCED AT RIGHT ANGLES TO THE SEWER LINE AT THE CENTER LINE OF EACH MANHOLE.
 2. NO REPRESENTATIVE OF THE COUNTY ENGINEER WILL SURVEY OR LAY OUT ANY PORTION OF THE WORK.
 3. THE OWNER OR HIS AUTHORIZED REPRESENTATIVE SHALL FURNISH THE COUNTY ENGINEER WITH GRADE SHEETS AND STATIONING FOR ALL HOUSE LATERALS AND Y BRANCHES AND SHALL PROVIDE STAKES FOR THEM AT THEIR PROPER LOCATIONS WITH STATIONING PLAINLY MARKED. ANY CHANGE IN LOCATION SHALL BE REQUESTED BY WRITING BY THE OWNER OR HIS REPRESENTATIVE.
 4. THE PRIVATE ENGINEER SHALL FURNISH THE HOUSE LATERAL DEPTH AT THE PROPERTY LINE BELOW THE TOP OF CURB ELEVATION FOR EACH HOUSE LATERAL ON THE GRADE SHEET.
 5. NO REVISIONS SHALL BE MADE IN THESE PLANS WITHOUT THE APPROVAL OF THE COUNTY ENGINEER.
 6. USE STANDARD MANHOLE FRAMES AND COVERS, S-117.
 7. USE STANDARD STRENGTH PIPE.
 8. USE CEMENT MORTAR OR "WEDGE LOCK" OR "SPREAD SEAL" FOR ALL V.C.P. JOINTS PER SPEC'S, SECS. 36 & 48.
 9. RESURFACE ALL TRENCH WITHIN PAVED AREA TO MEET L.A. COUNTY ROAD DEPT. OR CALIF. STATE HIGHWAY REQUIREMENTS IN ACCORDANCE WITH PERMITS.
 10. INCREASE FOUR FEET OF SEWER AT POINTS OF INTERFERENCE WITH POLES, CASE III, S-172.
 11. HOUSE LATERALS TO BE CONSTRUCTED WITH INVERTS AT PROPERTY LINE... FEET BELOW CURB GRADE.
 12. ALL STRUCTURES SHALL BE BRICK SEWER STRUCTURES, S-104.
 13. FOR ALLOWABLE LEAKAGE TEST USE FORMULA NO. ... SPEC'S, SEC. 54.
 14. MANHOLE TOPS IN UNIMPROVED RIGHTS-OF-WAY TO BE SIX INCHES ABOVE FINISHED GRADE.
 15. THE CONTRACTOR SHALL NOTIFY THE CONSTRUCTION & STORM DRAIN DIVISION BY TELEPHONE, MADISON 9-677, EXT. 262, AT LEAST TWENTY-FOUR HOURS BEFORE STARTING ANY WORK UNDER THIS CONTRACT.
 16. (a) NO CONSTRUCTION WILL BE PERMITTED IN FILLED AREAS, UNLESS ACCEPTABLE CERTIFICATION IS SUBMITTED TO THE CONSTRUCTION DIVISION OF THE COUNTY ENGINEER'S DEPARTMENT THAT THE COMPACTION IS GREATER THAN 87%.
(b) IF COMPACTION IS LESS THAN 90%, THE SEWER MUST BE CRADLED AS SHOWN ON PLANS.
(c) IF COMPACTION IS GREATER THAN 80% CRADLING OR SEE CURB MANHOLE BASES ARE NOT REQUIRED. HOWEVER, JOINT COMPOUND MUST BE SUBSTITUTED FOR ALL JOINTS OF CEMENT MORTAR IN FILLED AREAS.
 17. STANDARD SPECIFICATIONS DATED MAY 15, 1959 APPLY IN THE CONSTRUCTION OF THIS PROJECT.

NOTE: GRADES TO WHICH THIS IMPROVEMENT IS TO BE CONSTRUCTED ARE SHOWN ON PLANS AND PROFILE GRADE POINTS FOR TOP OF CURB, CENTER LINE OF STREETS, OR CENTER LINE OF ALLEYS ARE SHOWN BY CIRCLES ON PROFILES AT ALL POINTS BETWEEN DESIGNATED POINTS THE GRADE SHALL BE ESTABLISHED SO AS TO CONFORM TO A STRAIGHT LINE DRAWN BETWEEN SAID DESIGNATED POINTS.
ELEVATIONS ARE IN FEET ABOVE U.S.C. & G.S. MEAN LEVEL DATUM OF 1929.
THE DRAWING AND THE DATA HEREON ARE HEREBY MADE A PART OF THE SPECIFICATIONS.
WORK SHALL BE CONSTRUCTED ACCORDING TO SPECIFICATIONS ON FILE IN THE OFFICE OF THE COUNTY ENGINEER AND SHALL BE PROSECUTED ONLY IN THE PRESENCE OF THE COUNTY ENGINEER.
BEFORE WORK CAN BE STARTED, THE CONTRACTOR MUST OBTAIN A PERMIT TO EXCAVATE IN COUNTY STREETS FROM THE L.A. COUNTY ROAD DEPT., DISTRICT OFFICE NO. ... AND MAKE A DEPOSIT WITH THE COUNTY ENGINEER, ROOM 224 SAN ANTONIO BUILDING, 224 SO. BROADWAY SUFFICIENT TO COVER THE COST OF CONSTRUCTION INSPECTION AND RECORD PLANS.
APPROVAL OF THIS PLAN BY THE COUNTY OF LOS ANGELES DOES NOT CONSTITUTE A REPRESENTATION AS TO THE ACCURACY OF THE LOCATION OF OR THE EXISTENCE OR NON-EXISTENCE OF ANY UNDERGROUND UTILITY PIPE, OR STRUCTURE WITHIN THE LIMITS OF THIS PROJECT. THIS NOTE APPLIES TO ALL PAGES.
IF WORK IS TO BE DONE IN A STATE HIGHWAY, A PERMIT MUST BE OBTAINED FROM THE STATE OF CALIFORNIA, DIVISION OF HIGHWAYS, 120 SOUTH SPRING STREET.

COUNTY OF LOS ANGELES, CALIFORNIA
APPROVED, JOHN A. LAMBE, COUNTY ENGINEER
APPROVED, C. B. CRUTCHER, CHIEF ENGINEER
By *C. E. ...* ASSISTANT SANITATION ENGINEER
By *A. ...* OFFICE ENGINEER
CHECKED BY *S. J. ...*
OFFICE OF COUNTY ENGINEER, REG. C. E. NO. ...
SUBMITTED BY: *John J. ...* 9-17-59
LOS ANGELES REGIONAL ENGINEER, REG. C. E. NO. 2871



P.C. 5203 PAGE 2

COLLECT CHARGES AS INDICATED

(28564)

TRACT N° 24081

TRACT N° 24081

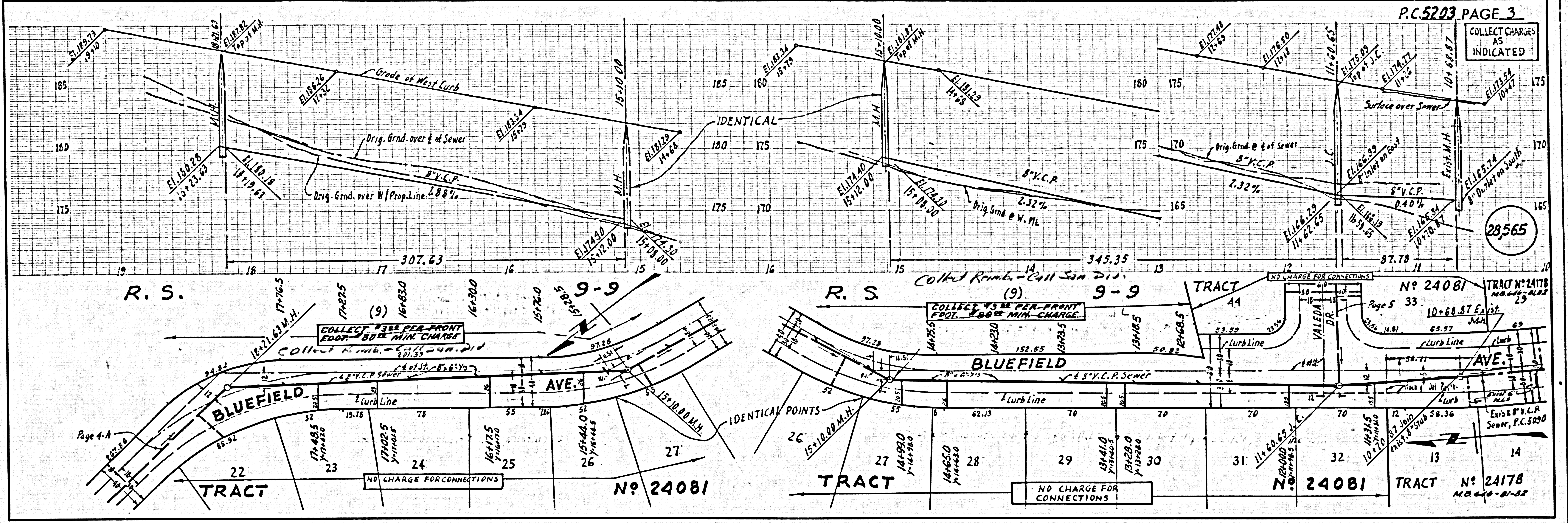
TRACT N° 24145

NO CHARGE FOR CONNECTIONS
NO CHARGE FOR CONNECTIONS
NO CHARGE FOR CONNECTIONS
NO CHARGE FOR CONNECTIONS

NO CHARGE FOR CONNECTIONS
NO CHARGE FOR CONNECTIONS
NO CHARGE FOR CONNECTIONS
NO CHARGE FOR CONNECTIONS

NO CHARGE FOR CONNECTIONS
NO CHARGE FOR CONNECTIONS
NO CHARGE FOR CONNECTIONS
NO CHARGE FOR CONNECTIONS

COLLECT \$3.00 PER FRONT FOOT - \$80.00 MINIMUM CHARGE
Collect Remt. - call SAN. DIV.



COLLECT CHARGES AS INDICATED

28,565

R. S.

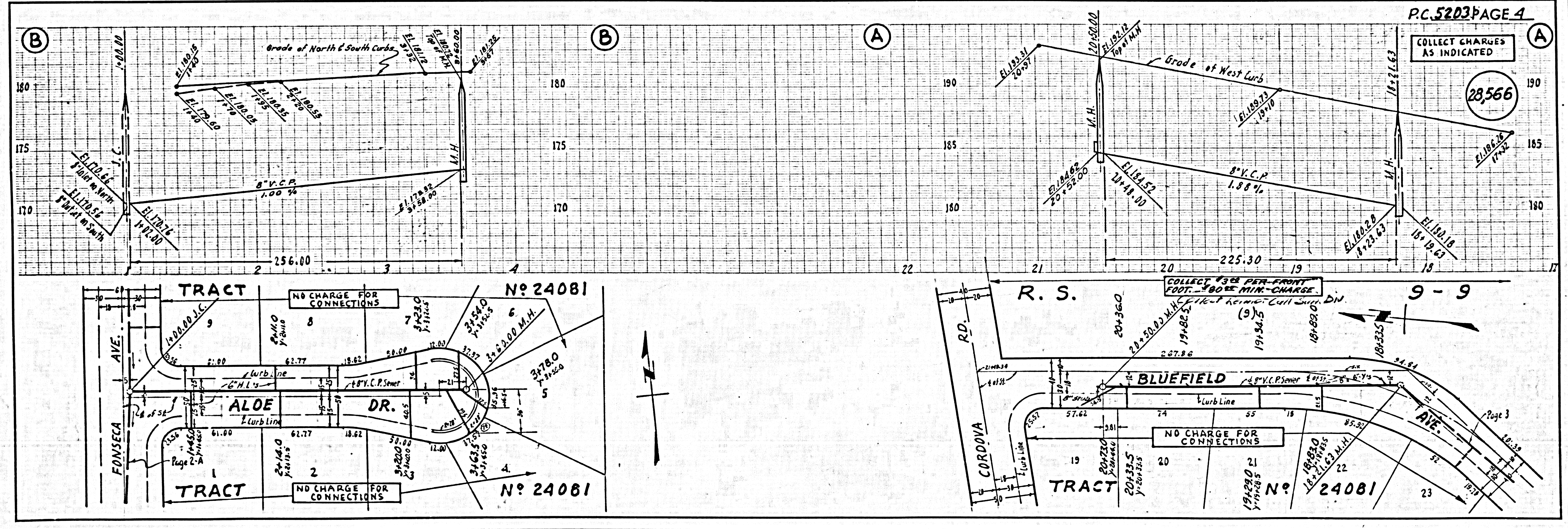
R. S.

Page 4-A

Page 5

Page 33

TRACT No. 24178
M.B. 640-01-02



COLLECT CHARGES AS INDICATED

28,566

(B)

(B)

(A)

(A)

FONSECA AVE.

CORDOVA RD.

TRACT

R. S.

TRACT

TRACT

NO CHARGE FOR CONNECTIONS

NO CHARGE FOR CONNECTIONS

No. 24081

No. 24081

9-9

9-9

Page 3

NO CHARGE FOR CONNECTIONS

28,567

