

BENCH MARK S.Y. 3929
 Los Angeles City Monument on E Main Street and 10' S of pavement of Ocean Street (now 228th St) to the west. ELEVATION = 37.379
 [Subtract 0.57 from all elevations hereon to convert to 1955 adjustment (Gardens Quad)]

LOMITA BLDG. DIST. NO. 7.1

- NOTES
1. PROVIDE STAKES ON THE PROPERTY LINE OR PROPERTY LINES PRODUCED AT RIGHT ANGLES TO THE SEWER LINE AT THE CENTER LINE OF EACH MANHOLE.
 2. NO REPRESENTATIVE OF THE COUNTY ENGINEER WILL SURVEY OR LAY OUT ANY PORTION OF THE WORK.
 3. THE OWNER OR HIS AUTHORIZED REPRESENTATIVE SHALL FURNISH THE COUNTY ENGINEER WITH GRADE SHEETS AND STATIONING FOR ALL HOUSE LATERALS AND Y BRANCHES AND SHALL PROVIDE STAKES FOR THEM AT THEIR PROPER LOCATIONS WITH STATIONING PLAINLY MARKED. ANY CHANGE IN LOCATION SHALL BE REQUESTED IN WRITING BY THE OWNER OR HIS REPRESENTATIVE.
 4. THE PRIVATE ENGINEER SHALL FURNISH THE HOUSE LATERAL DEPTH AT THE PROPERTY LINE BELOW THE TOP OF CURB ELEVATION FOR EACH HOUSE LATERAL ON THE GRADE SHEET.
 5. NO REVISIONS SHALL BE MADE IN THESE PLANS WITHOUT THE APPROVAL OF THE COUNTY ENGINEER.
 6. USE STANDARD MANHOLE FRAMES AND COVERS, S-117, EXCEPT AS NOTED.
 7. USE STANDARD STRENGTH PIPE EXCEPT AS NOTED.
 8. USE CEMENT MORTAR OR "WEDGE LOCK" OR "SPREAD SEAL" FOR ALL V.C.P. JOINTS PER SPECS., SECS. 16 & 18.
 9. RESURFACE ALL TRENCH WITHIN PAVED AREA TO MEET L.A. COUNTY ROAD DEPT. OR CALIF. STATE HIGHWAY REQUIREMENTS IN ACCORDANCE WITH PLANS.
 10. ENCASE FOUR FEET OF SEWER AT POINTS OF INTERFERENCE WITH POLES, CASE 16, S-172.
 11. HOUSE LATERALS TO BE CONSTRUCTED WITH INVERTS AT PROPERTY LINE $\frac{1}{8}$ FEET BELOW CURB GRADE EXCEPT AS NOTED.
 12. ALL STRUCTURES SHALL BE BRICK SEWER STRUCTURES, S-114, EXCEPT AS NOTED.
 13. FOR ALLOWABLE LEAKAGE TEST USE FORMULA NO. 1, SPECS., SEC. 14.
 14. MANHOLE TOPS IN UNIMPROVED RIGHTS-OF-WAY TO BE SIX INCHES ABOVE FINISHED GRADE.
 15. THE CONTRACTOR SHALL NOTIFY THE CONSTRUCTION & STORAGE DIVISION BY TELEPHONE, MADISON 9-4747, EXT. 345, AT LEAST TWENTY-FOUR HOURS BEFORE STARTING ANY WORK UNDER THIS CONTRACT.
 16. STANDARD SPECIFICATIONS DATED MAY 15, 1959 APPLY IN THE CONSTRUCTION OF THIS PROJECT.

PROFILE ALIGNMENT AND GRADE OF **P.C. 5205**
SANITARY SEWERS PAGE 1
 TO BE CONSTRUCTED IN J.N. 0351.25

TRACT No 24941
PRIVATE CONTRACT NO. 5205

W.S. 28
 2 SHEETS, 3 PAGES
 SCALE: VERT. $\frac{1}{4"} = 4'$ HORIZ. $\frac{1}{4"} = 40'$ JUNE, 1959
 PREPARED IN THE OFFICES OF
 RICHARD BROWN, JR.
 7532 COMMISSIONER AVENUE
 BUENA PARK, CALIF. PH. LAWRENCE 2-1333
 BY R. P. ...
 REG. C. E. NO. 13373

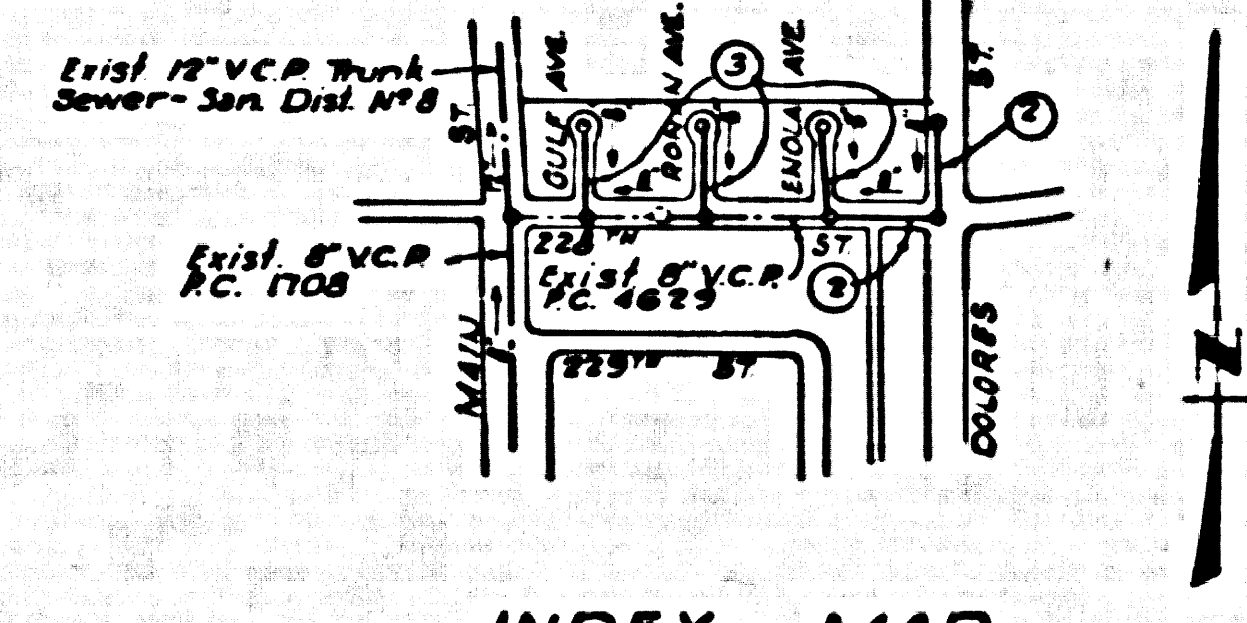
(28,515)

NOTE:
 GRADES TO WHICH THIS IMPROVEMENT IS TO BE CONSTRUCTED ARE SHOWN ON PLANS AND PROFILE. GRADE POINTS FOR TOP OF CURBS, CENTER LINE OF STREETS, OR CENTER LINE OF ALLEYS ARE SHOWN BY CIRCLES ON PLANS. AT ALL POINTS BETWEEN DESIGNATED POINTS THE GRADE SHALL BE ESTABLISHED SO AS TO CONFORM TO A STRAIGHT LINE DRAWN BETWEEN SAID DESIGNATED POINTS.
 ELEVATIONS ARE IN FEET ABOVE U.S.C. & G.S. SEA LEVEL DATUM OF 1929.
 THIS DRAWING AND THE DATA HEREON ARE HEREBY MADE A PART OF THE SPECIFICATIONS.
 WORK SHALL BE CONSTRUCTED ACCORDING TO SPECIFICATIONS ON FILE IN THE OFFICE OF THE COUNTY ENGINEER AND SHALL BE PROSECUTED ONLY IN THE PRESENCE OF THE COUNTY ENGINEER.
 BEFORE WORK CAN BE STARTED, THE CONTRACTOR MUST OBTAIN A PERMIT TO EXCAVATE IN COUNTY STREETS FROM THE L. A. COUNTY ROAD DEPT., DISTRICT OFFICE NO. 3, AND MAKE A DEPOSIT WITH THE COUNTY ENGINEER, ROOM 234 PAM AMERICAN BUILDING, 225 SO BROADWAY SUBJECT TO COVER THE COST OF CONSTRUCTION INSPECTION AND RECORD PLANS.
 APPROVAL OF THIS PLAN BY THE COUNTY OF LOS ANGELES DOES NOT CONSTITUTE A REPRESENTATION AS TO THE ACCURACY OF THE LOCATION OR OF THE EXISTENCE OR NON-EXISTENCE OF ANY UNDERGROUND UTILITY PIPE, OR STRUCTURE WITHIN THE LIMITS OF THIS PROJECT. THIS NOTE APPLIES TO ALL PAGES.
 IF WORK IS TO BE DONE IN A STATE HIGHWAY, A PERMIT MUST BE OBTAINED FROM THE STATE OF CALIFORNIA, DIVISION OF HIGHWAYS, 126 SOUTH SPRING STREET.

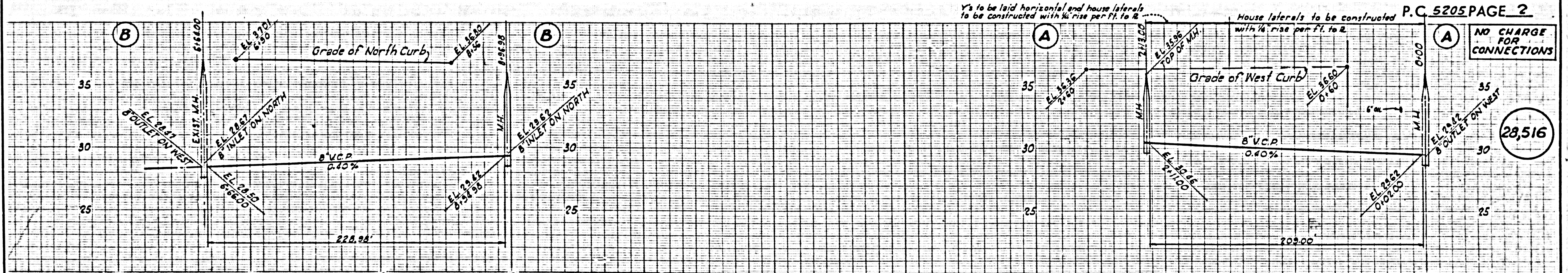
COUNTY OF LOS ANGELES, CALIFORNIA
 APPROVED, JOHN A. LAMME, COUNTY ENGINEER APPROVED, C. E. COMPTON, CHIEF ENGINEER
 BY R. P. ... ASST. SANITATION ENGINEER BY R. P. ... OFFICE ENGINEER
 CHECKED BY R. P. ...
 OFFICE OF COUNTY ENGINEER, R.F.C. & NO. 5406

Note to Sewer Contractor:
 Remove trap casting from first Manhole east of Gulf Ave. in 228th St. and install it in the double trap Manhole at 228th St. and Gulf Ave.

NO CHARGE FOR CONNECTIONS
R. P. ... 5-7-59

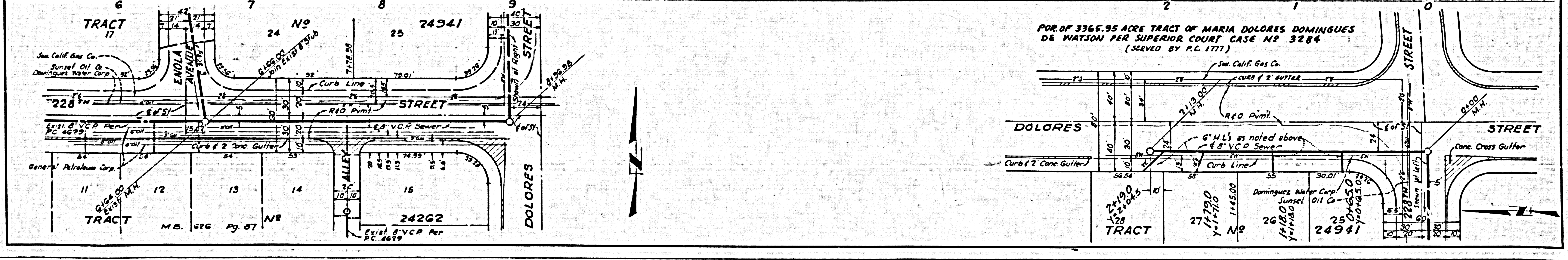


INDEX MAP
 SCALE 1" = 600'
 TRACT No 24941
 P.C. 5205



NO CHARGE FOR CONNECTIONS

(28,516)



POR OF 3365.95 ACRE TRACT OF MARIA DOLORES DOMINGUES DE WATSON PER SUPERIOR COURT CASE NO 3284 (SERVED BY P.C. 1777)

