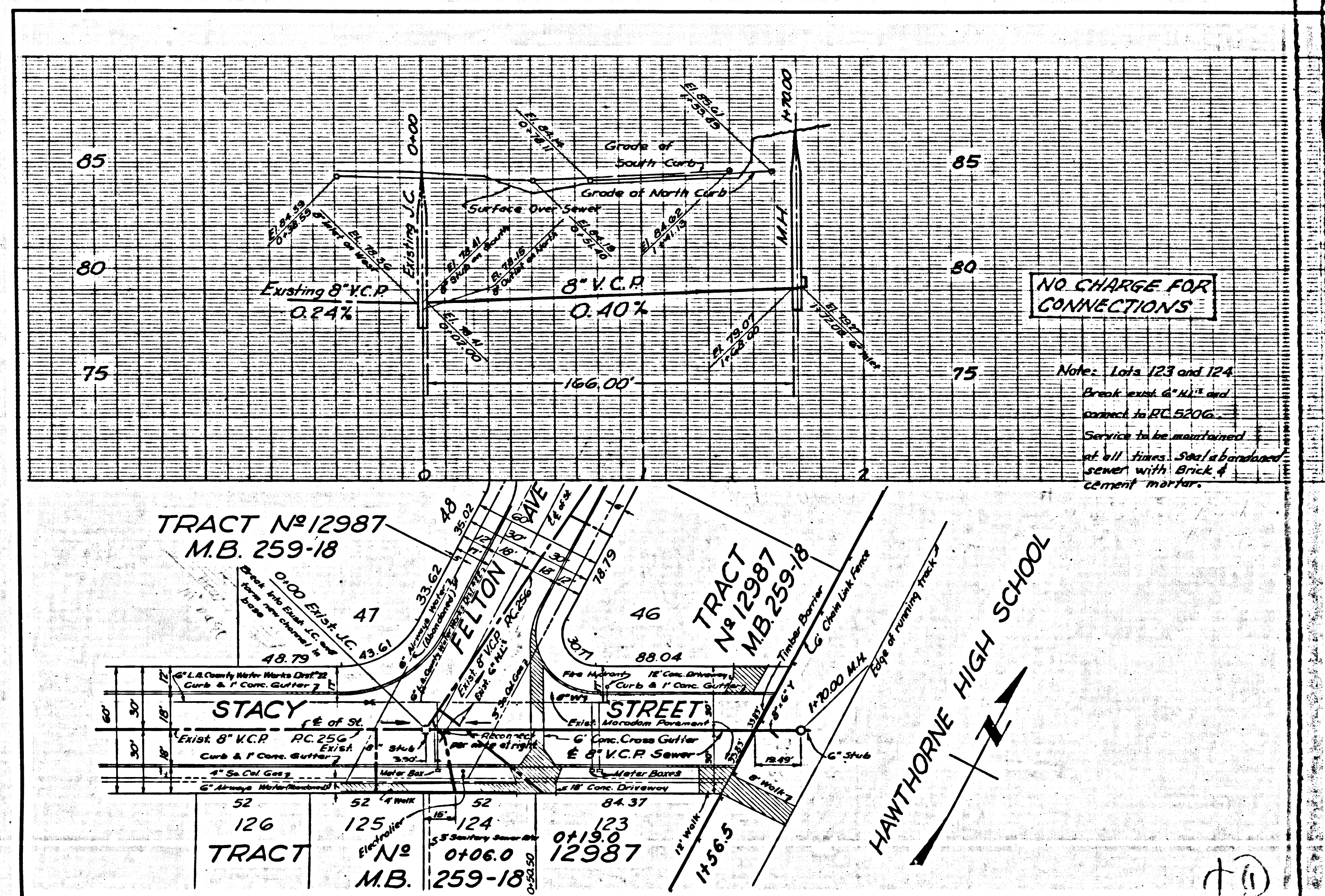


PC 5206

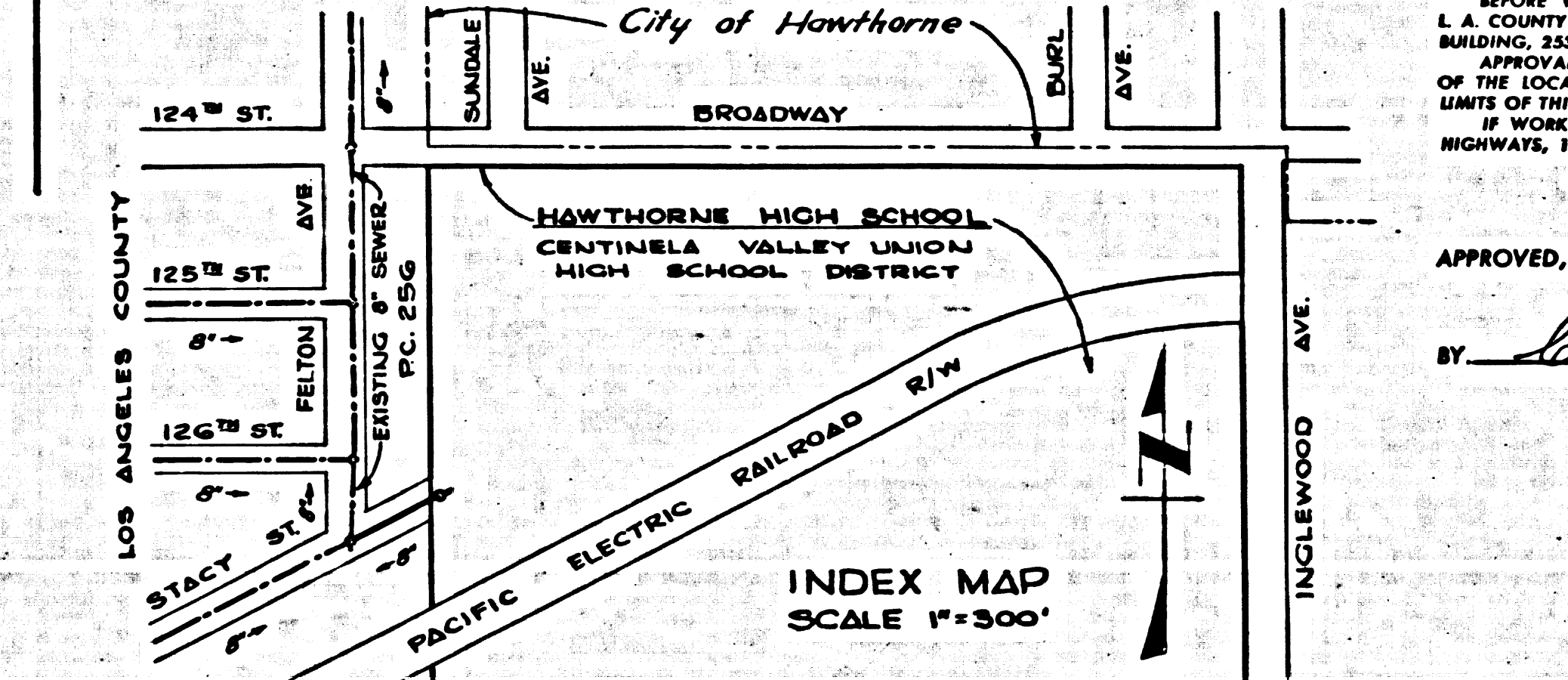


LENNOX BLDG. DIST. NO. 7

- NOTES:
1. PROVIDE STAKES ON THE PROPERTY LINE OR PROPERTY LINES PRODUCED AT RIGHT ANGLES TO THE SEWER LINE AT THE CENTER LINE OF EACH MANHOLE.
 2. NO REPRESENTATIVE OF THE COUNTY ENGINEER WILL SURVEY OR LAY OUT ANY PORTION OF THE WORK.
 3. THE OWNER OR HIS AUTHORIZED REPRESENTATIVE SHALL FURNISH THE COUNTY ENGINEER WITH GRADE SHEETS AND STATIONING FOR ALL HOUSE LATERALS AND Y BRANCHES AND SHALL PROVIDE STAKES FOR THEM AT THEIR PROPER LOCATIONS WITH STATIONING PLAINLY MARKED. ANY CHANGE IN LOCATION SHALL BE REQUESTED IN WRITING BY THE OWNER OR HIS REPRESENTATIVE.
 4. THE PRIVATE ENGINEER SHALL FURNISH THE HOUSE LATERAL DEPTH AT THE PROPERTY LINE BELOW THE TOP OF CURB ELEVATION FOR EACH HOUSE LATERAL ON THE GRADE SHEET.
 5. NO REVISIONS SHALL BE MADE IN THESE PLANS WITHOUT THE APPROVAL OF THE COUNTY ENGINEER.
 6. USE STANDARD MANHOLE FRAMES AND COVERS, S-117, 36" DIA. AS SHOWN.
 7. USE STANDARD STRENGTH PIPE 8" DIA. AS SHOWN.
 8. USE CEMENT MORTAR OR "WEDGE-LOCK" OR "SPED-SEAL" FOR ALL V.C.P. JOINTS PER SPEC'S, SECS. 36 & 41.
 9. RESURFACE ALL TRENCH WITHIN PAVED AREA TO MEET L.A. COUNTY ROAD DEPT. OR CALIF. STATE HIGHWAY REQUIREMENTS IN ACCORDANCE WITH PERMITS.
 10. ENCASE FOUR FEET OF SEWER AT POINTS OF INTERFERENCE WITH POLES, CASE NO. S-117.
 11. HOUSE LATERALS 30" OR CONSEQUENCED WITH INCREASE AT PROPOSED LINE PER SPEC'S, SECS. 36 & 41.
 12. ALL STRUCTURES SHALL BE BRICK SEWER STRUCTURES, S-104, EXCEPT AS NOTED.
 13. FOR ALLOWABLE LEAKAGE TEST USE FORMULA NO. 1, SPEC'S, SEC. 54.
 14. MANHOLE TOPS IN UNIMPROVED RIGHTS-OF-WAY TO BE SIX INCHES ABOVE FINISHED GRADE.
 15. THE CONTRACTOR SHALL NOTIFY THE CONSTRUCTION & STORM DRAIN DIVISION BY TELEPHONE, MADISON 9-070, EXT. 363, AT LEAST TWENTYFOUR HOURS BEFORE STARTING ANY WORK UNDER THIS CONTRACT.
 16. STANDARD SPECIFICATIONS DATED MAY 15, 1953 APPLY TO THE CONSTRUCTION OF THIS PROJECT.

BENCH MARK G-A, ELEVATION 85.195, C.S.P.D. 1548 P. 52
 L & T 10' SOUTH OF NORTH END OF CONG. DRIVE BETWEEN GAS PUMP ISLANDS OF SERVICE STATION ON S.W. CORNER OF INGLEWOOD AVE. AND EL SEGUNDO BLVD.

NOTE: REDUCE ABOVE ELEVATION 0.500' TO AGREE WITH L.A. COUNTY ROAD DEPT. 51 DATUM.



PROFILE ALIGNMENT AND GRADE OF **P.C. 5206**
SANITARY SEWERS PAGE 1
 TO BE CONSTRUCTED IN **J.N. 0351.26**
STACY STREET
& HAWTHORNE HIGH SCHOOL

PRIVATE CONTRACT NO. 5206

W.S. 25
 1 SHEET, 2 PAGE
 SCALE: VERT. 1" = 4' HORIZ. 1" = 40'
 JULY, 1959
 PREPARED IN THE OFFICES OF
FLEWELLING & MOODY
 ARCHITECTURE - ENGINEERING - INDUSTRIAL PLANNING
 By *Robert S. Moody*
 REG. C. E. NO. 3329

FOR LEGEND SEE PLAN NO. S-A-64

NOTE: GRADES TO WHICH THE IMPROVEMENT IS TO BE CONSTRUCTED ARE SHOWN ON PLANS AND PROFILE. GRADE POINTS FOR TOP OF CURBS, CENTER LINE OF STREETS, OR CENTER LINE OF ALLEYS ARE SHOWN BY CIRCLES ON PROFILES. AT ALL POINTS BETWEEN DESIGNATED POINTS THE GRADE SHALL BE ESTABLISHED SO AS TO CONFORM TO A STRAIGHT LINE DRAWN BETWEEN SAID DESIGNATED POINTS.

ELEVATIONS ARE IN FEET ABOVE U.S.C. & G.S. SEA LEVEL DATUM OF 1929.

THIS DRAWING AND THE DATA HEREON ARE HEREBY MADE A PART OF THE SPECIFICATIONS.

WORK SHALL BE CONSTRUCTED ACCORDING TO SPECIFICATIONS ON FILE IN THE OFFICE OF THE COUNTY ENGINEER AND SHALL BE PROSECUTED ONLY IN THE PRESENCE OF THE COUNTY ENGINEER.

THE CONTRACTOR MUST OBTAIN A PERMIT TO EXCAVATE IN COUNTY STREETS FROM THE L.A. COUNTY ROAD DEPT., DISTRICT OFFICE NO. 1, AND MAKE A DEPOSIT WITH THE COUNTY ENGINEER, ROOM 224 PAN AMERICAN BUILDING, 225 SO. BROADWAY SUFFICIENT TO COVER THE COST OF CONSTRUCTION INSPECTION AND RECORD PLANS.

ON THE LOCATION OF THE EXISTENCE OR NON-EXISTENCE OF ANY UNDERGROUND UTILITY PIPE, OR STRUCTURE WITHIN THE LIMITS OF THIS PROJECT THIS NOTE APPLIES TO ALL PAGES.

IF WORK IS TO BE DONE IN A STATE HIGHWAY, A PERMIT MUST BE OBTAINED FROM THE STATE OF CALIFORNIA, DIVISION OF HIGHWAYS, 128 SOUTH SPRING STREET.

COUNTY OF LOS ANGELES, CALIFORNIA

APPROVED, JOHN A. LAMBE, COUNTY ENGINEER
 APPROVED, A. M. RAWN, CHIEF ENGINEER
 CO. SAN. DIST. NO. 5

By *Robert S. Moody* SANITATION ENGINEER
 By *John A. Lambe* OFFICE ENGINEER

CHECKED BY *Stacy Street* 7-23-59
 OFFICE OF COUNTY ENGINEER, REG. C. E. NO. 3426

PC 5206