

NORWALK BLDG. DIST. NO. 4.06

PROFILE ALIGNMENT AND GRADE OF P.C. 5207
SANITARY SEWERS PAGE 1

TO BE CONSTRUCTED IN
TRACT No 24984

PRIVATE CONTRACT NO. 5207

W.S. 33

4 SHEETS; 7 PAGES

SCALE: VERT. 1"=4' HORIZ. 1"=40'

AUG. 1959

28,467

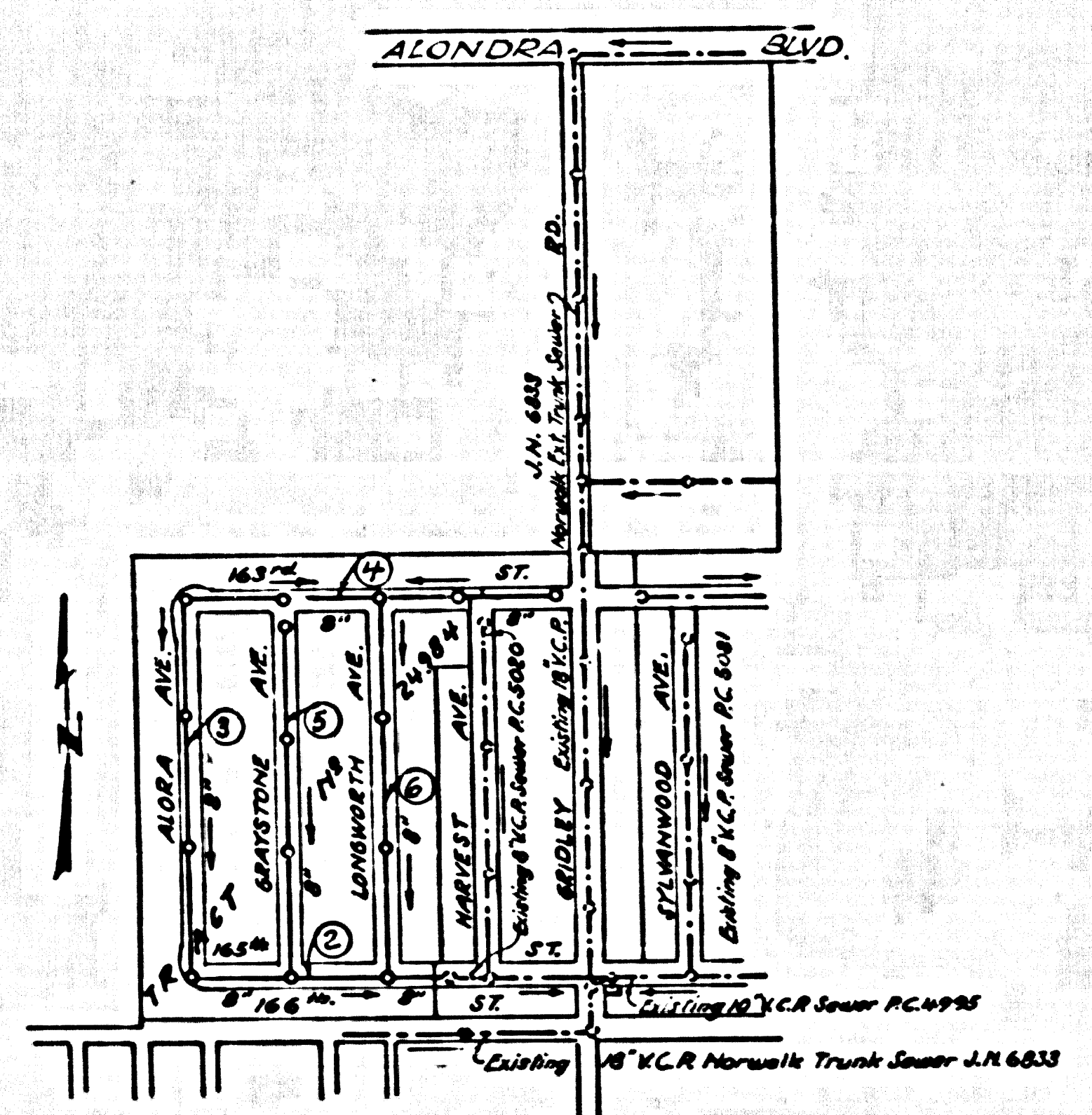
PREPARED IN THE OFFICES OF
KEMMERER ENGR. CO. INC.

BY Robert R. Flores
REG. C. E. NO. 11349

FOR LEGEND SEE PLAN NO. S-A-64

- NOTES:
- PROVIDE STAKES ON THE PROPERTY LINE OR PROPERTY LINES PRODUCED AT RIGHT ANGLES TO THE SEWER LINE AT THE CENTER LINE OF EACH MANHOLE.
 - NO REPRESENTATIVE OF THE CITY ENGINEER WILL SURVEY OR LAYOUT ANY PORTION OF THE WORK.
 - THE OWNER OR HIS AUTHORIZED REPRESENTATIVE SHALL FURNISH THE CITY ENGINEER WITH GRADE SHEETS AND STATIONING FOR ALL HOUSE LATERALS AND Y BRANCHES AND SHALL PROVIDE STAKES FOR THEM AT THEIR PROPER LOCATIONS WITH STATIONING PLAINLY MARKED. ANY CHANGE IN LOCATION SHALL BE REQUESTED IN WRITING BY THE OWNER OR HIS REPRESENTATIVE.
 - NO REVISIONS SHALL BE MADE IN THESE PLANS WITHOUT THE APPROVAL OF THE CITY ENGINEER.
 - USE STANDARD MANHOLE FRAMES AND COVERS, S-A-117, EXCEPT AS NOTED.
 - USE STANDARD STRENGTH PIPE EXCEPT AS NOTED.
 - USE CEMENT MORTAR, WEDGE-LOCK, OR SPEED-SEAL FOR ALL VITRIFIED CLAY PIPE JOINTS; PER SPEC'Y SEC. 26 & 27.
 - RESURFACE ALL TRENCH WIDTHS IN PAVED AREA TO MEET CITY OF NORWALK; OR CALIF. STATE HIGHWAY DEPT. REQUIREMENTS IN ACCORDANCE WITH PERMITS.
 - ENCASE FOUR FEET OF SEWER AT POINTS OF INTERFERENCE WITH POLES, S-A-172, CASE 333.
 - HOUSE LATERALS TO BE CONSTRUCTED WITH INVERTS AT PROPERTY LINE 2 FEET BELOW CURB GRADE EXCEPT AS NOTED.
 - ALL STRUCTURES SHALL BE BRICK SEWER STRUCTURES, S-A-194, EXCEPT AS NOTED.
 - FOR ALLOWABLE SLOPES THAT USE FORMULA NO. 1, SPEC'Y, SEC. 24.
 - MANHOLE TOPS IN UNIMPROVED RIGHTS-OF-WAY TO BE 2' ABOVE FINISHED GRADE.
 - THE PRIVATE ENGINEER IS TO FURNISH THE HOUSE LATERAL DEPTH AT THE PROPERTY LINE BELOW THE TOP OF CURB ELEVATION FOR EACH HOUSE LATERAL ON THE GRADE SHEET.
 - THE CONTRACTOR SHALL NOTIFY THE CONSTRUCTION DIVISION BY TELEPHONE, MIDWAY 9-4747, EXT. 242 AT LEAST 24 HOURS BEFORE STARTING ANY WORK UNDER THIS CONTRACT.

B.M. S.Y. 2188 SPIKE & LEAD 4' E. OF CURB
RETURN AT N.E. COR. ALONDRA &
MAIDSTONE (ARTESIA QUAD 193) ELEV 71.679



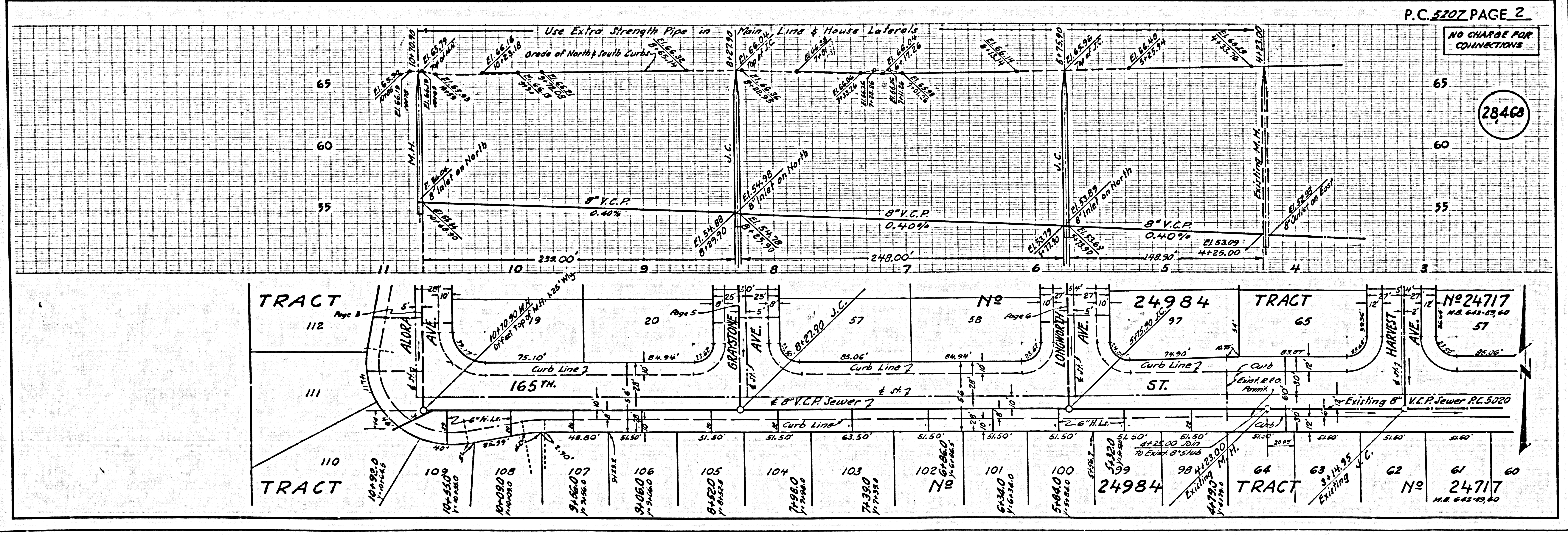
INDEX MAP
TRACT No 24984
P.C. 5207 SCALE 1"=500'

NOTE:
Lot 80 to be served by existing Sewer
(P.C. 5020) in Harvest Ave.

NO CHARGE FOR
CONNECTIONS
L. Flores 9-1-59

NOTES:
GRADES TO WHICH THE IMPROVEMENT IS TO BE CONSTRUCTED ARE SHOWN ON PLANS AND PROFILES. GRADE POINTS FOR TOP OF CURBS, CENTER LINE OF STREETS, OR CENTER LINE OF ALLEYS ARE SHOWN BY CIRCLES ON PROFILES AT ALL POINTS BETWEEN DESIGNATED POINTS. THE GRADE SHALL BE OBTAINED AS TO ITS COMPARISON TO A STRAIGHT LINE BEYOND THESE DESIGNATED POINTS.
ELEVATIONS ARE IN FEET ABOVE U.S.C. & G.S. MEAN SEA LEVEL, DATUM OF 1929.
THIS DRAWING AND THE DATA HEREON ARE HEREBY MADE A PART OF THE SPECIFICATIONS.
WORK SHALL BE CONSTRUCTED ACCORDING TO SPECIFICATIONS ON FILE IN THE OFFICE OF THE CITY ENGINEER AND SHALL BE PROSECUTED ONLY IN THE PRESENCE OF THE COUNTY ENGINEER.
BEFORE WORK CAN BE STARTED, THE CONTRACTOR MUST OBTAIN A PERMIT TO EXCAVATE IN CITY STREETS FROM THE CITY OF NORWALK.
APPROVAL OF THIS PLAN BY THE CITY OF NORWALK DOES NOT CONSTITUTE A REPRESENTATION AS TO THE ACCURACY OF THE LOCATION OF OR THE EXISTENCE OR NON-EXISTENCE OF ANY UNDERGROUND UTILITIES PIPE, OR STRUCTURE WITHIN THE LIMITS OF THIS PROJECT. THIS NOTE APPLIES TO ALL PAGES.
IF WORK IS TO BE DONE IN A STATE HIGHWAY, A PERMIT MUST BE OBTAINED FROM THE STATE OF CALIFORNIA, DIVISION OF HIGHWAYS, 120 SOUTH SPRING STREET.

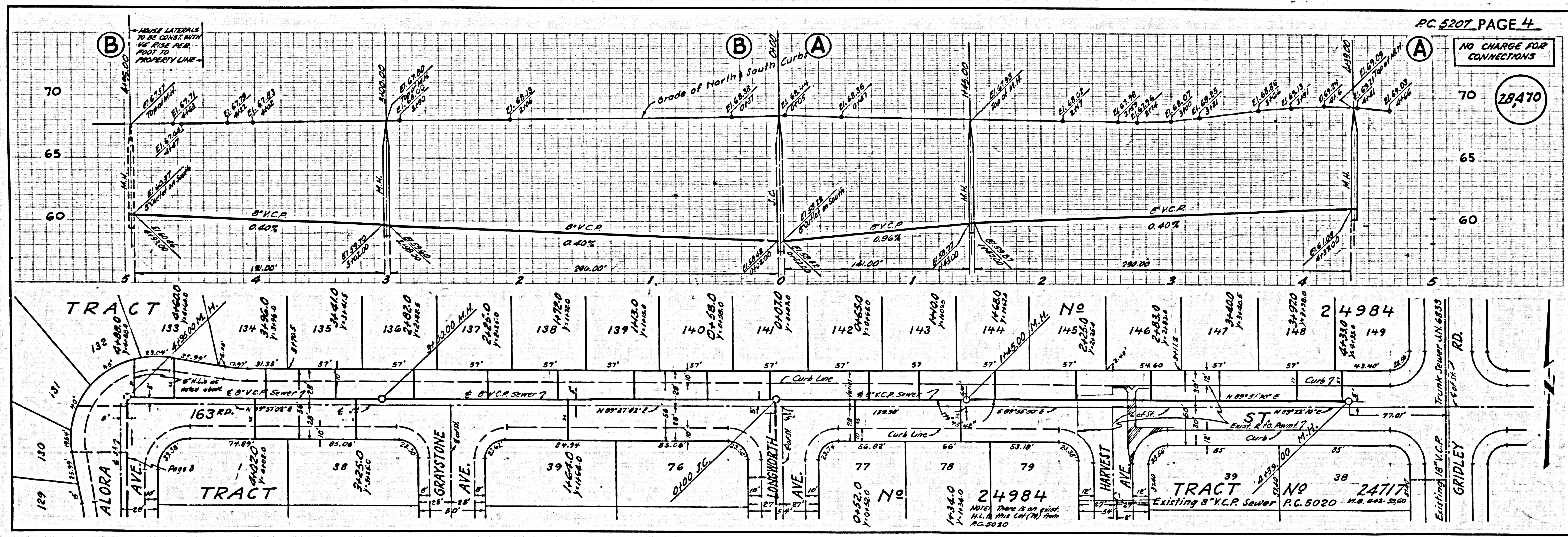
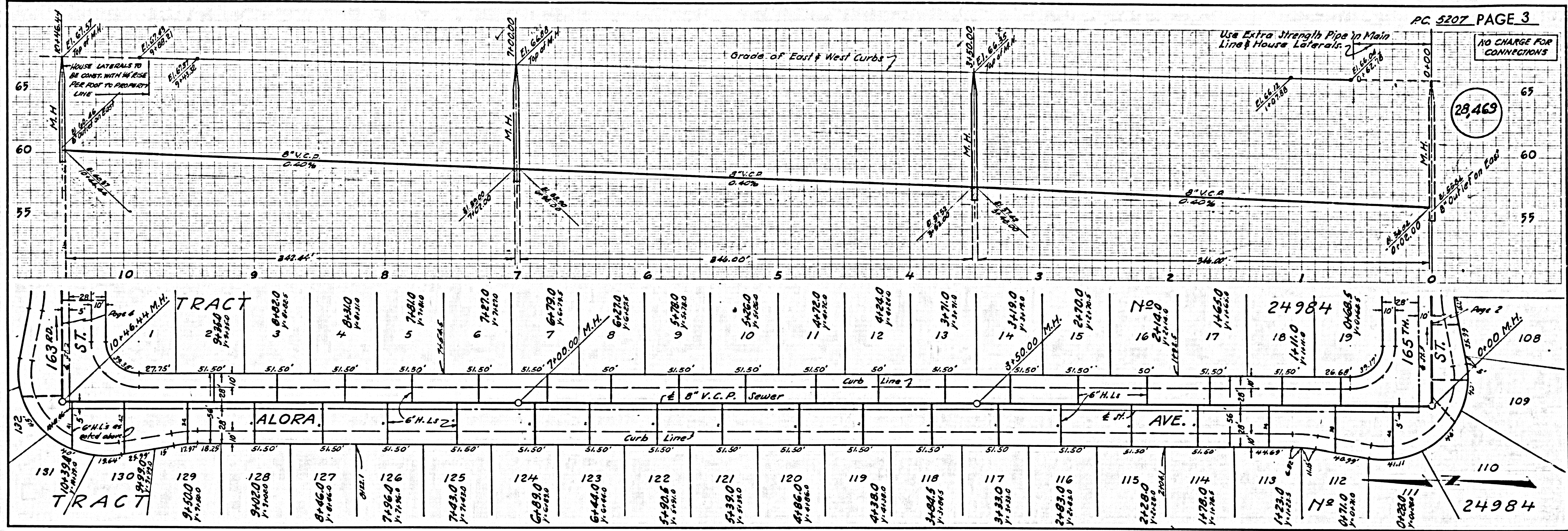
CITY OF NORWALK, CALIFORNIA
APPROVED, JOHN A. LAMBE, CITY ENGINEER
APPROVED, C. R. COMPTON, CHIEF ENGINEER
BY [Signature] ASST. SANITATION ENGINEER
CHECKED BY [Signature] 9-21-59
OFFICE OF CITY ENGINEER, REG. C. E. NO. 5306

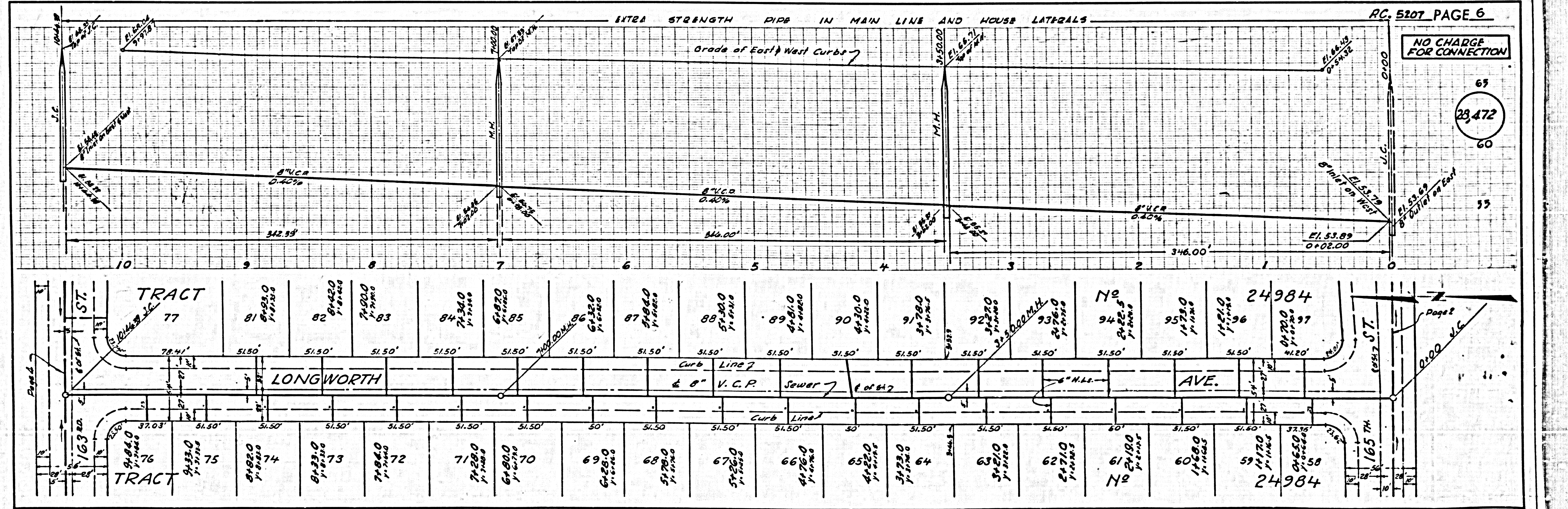
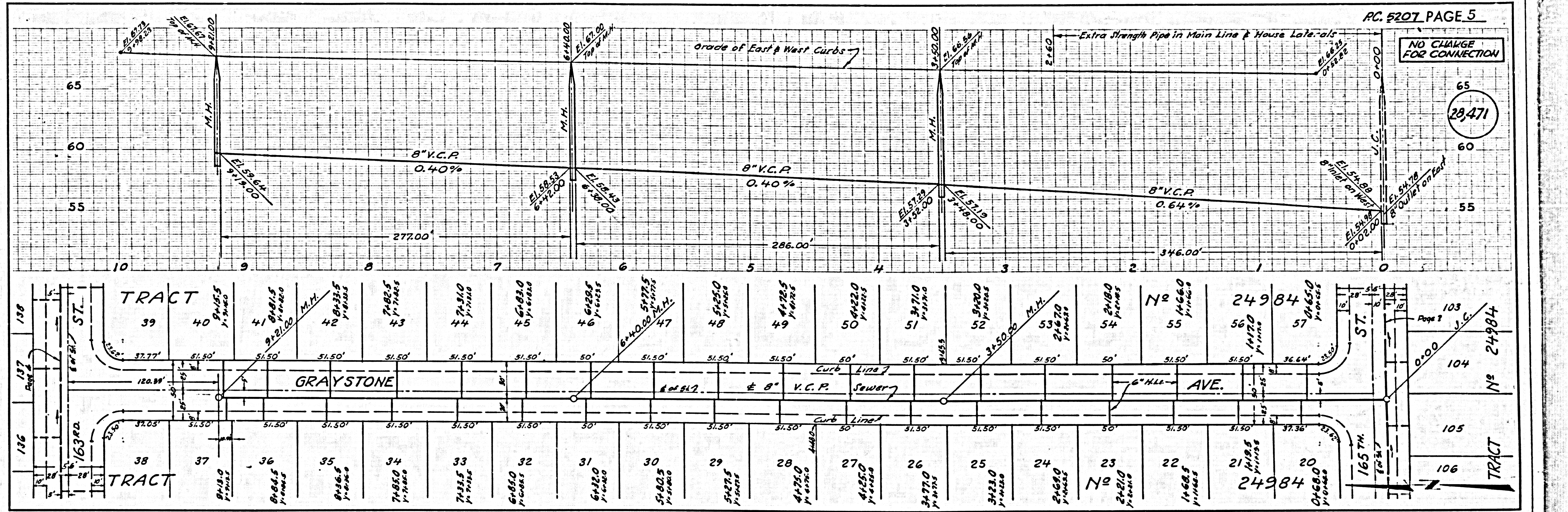


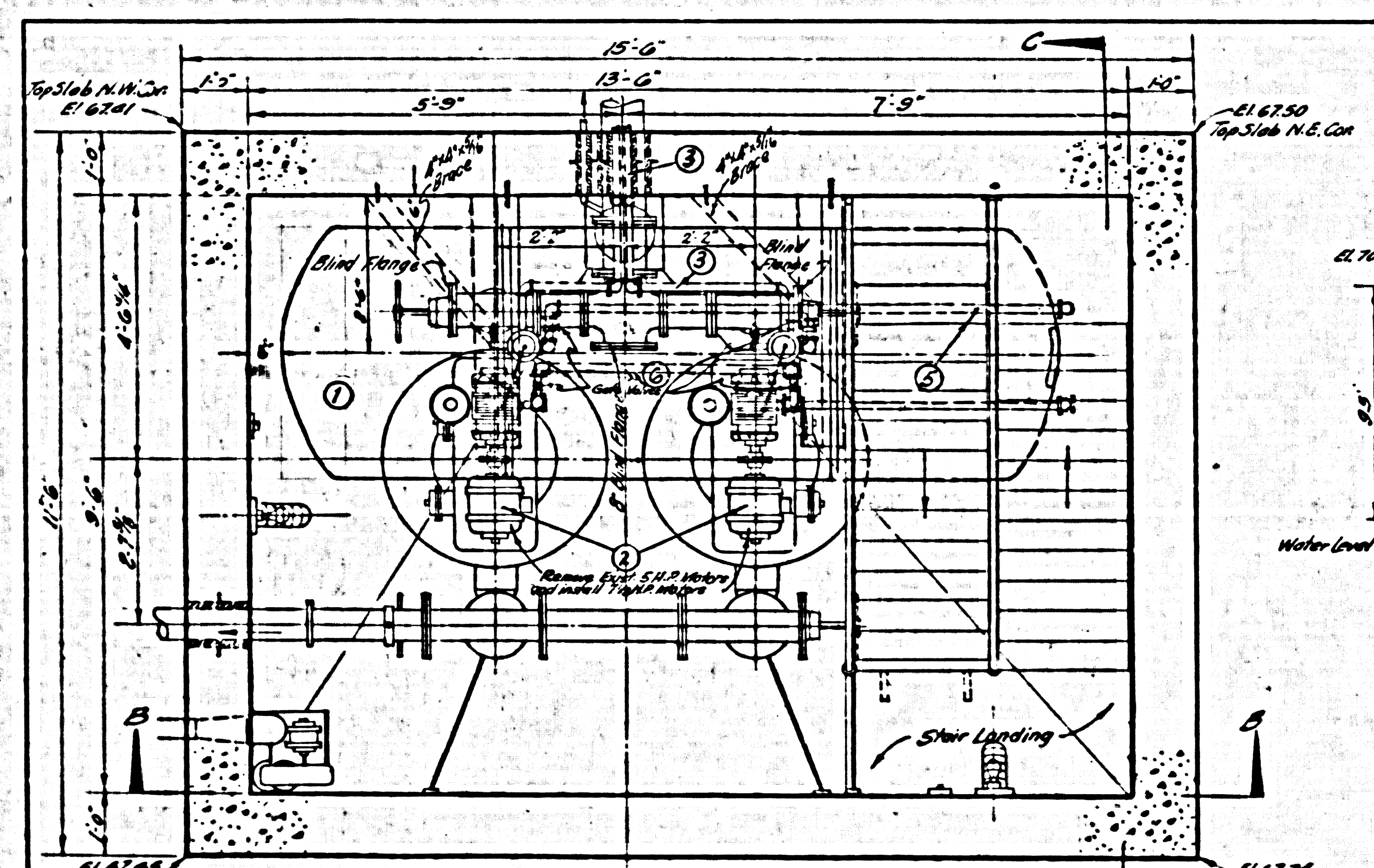
P.C. 5207 PAGE 2

NO CHARGE FOR CONNECTIONS

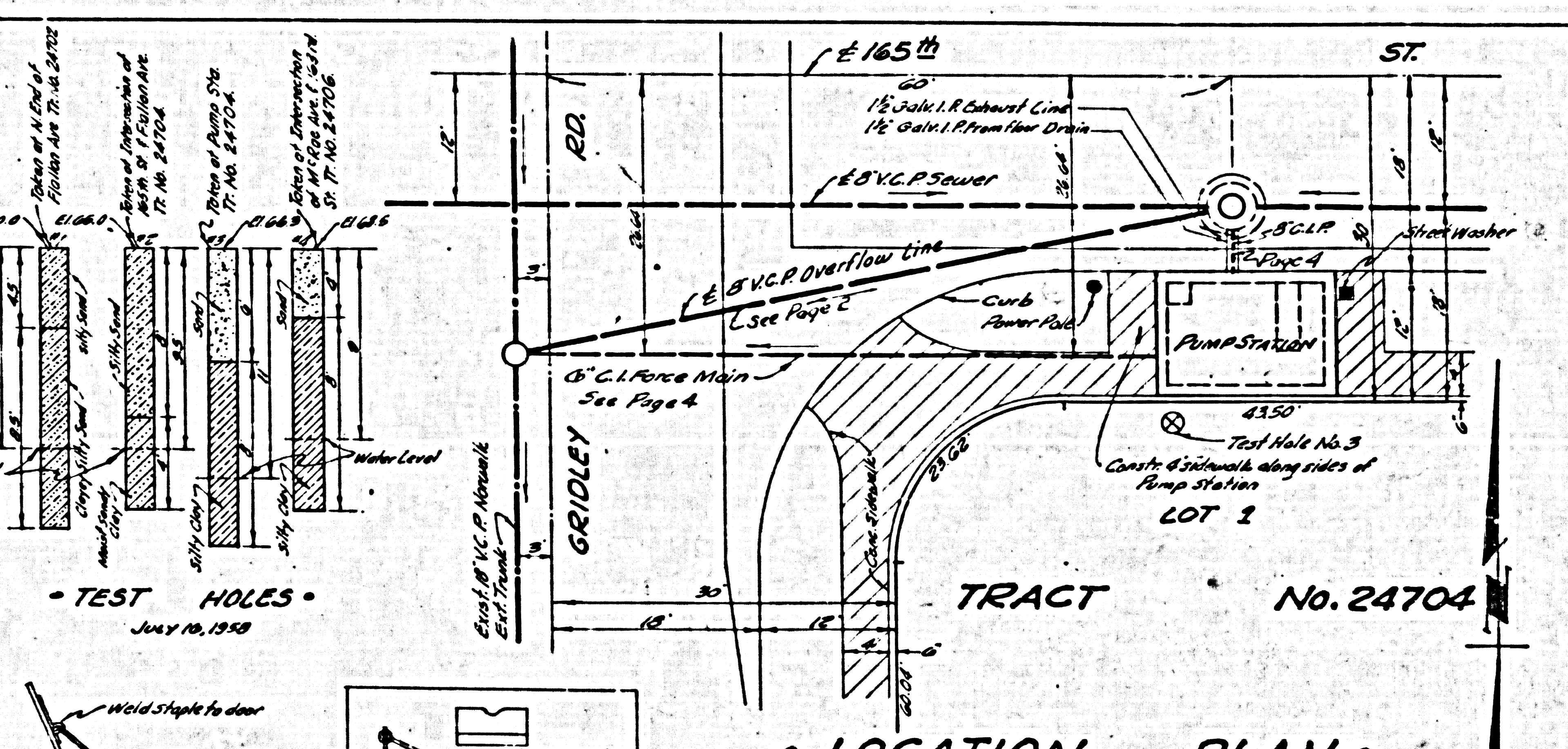
28,468



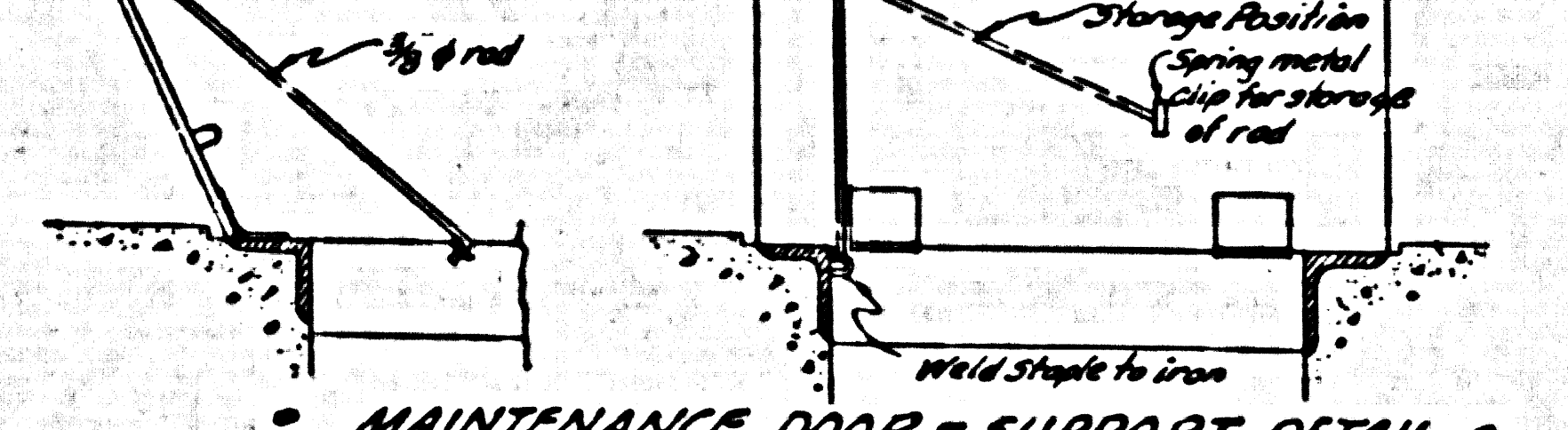




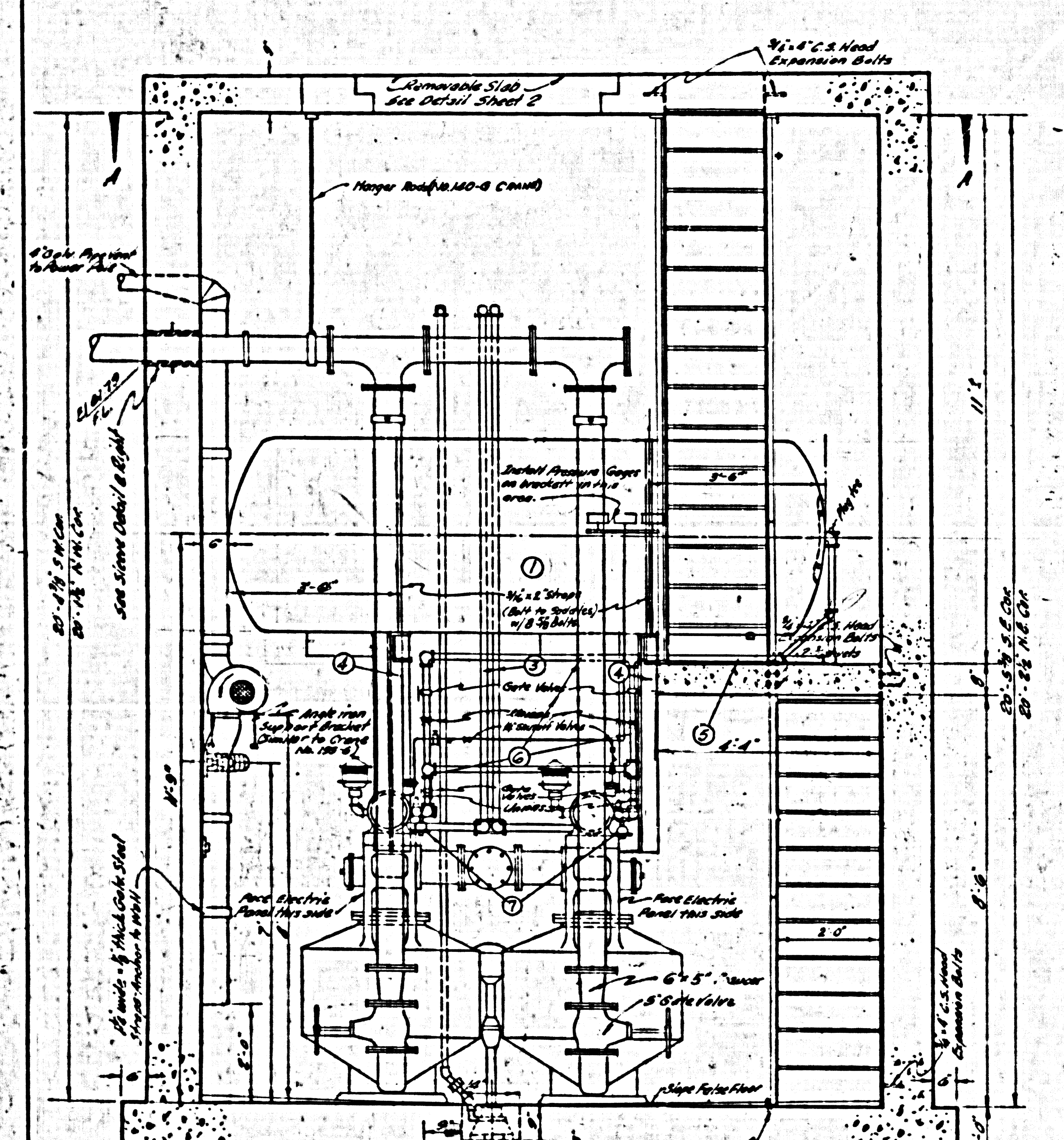
SECTION A-A
Scale: 1/2" = 1'-0"



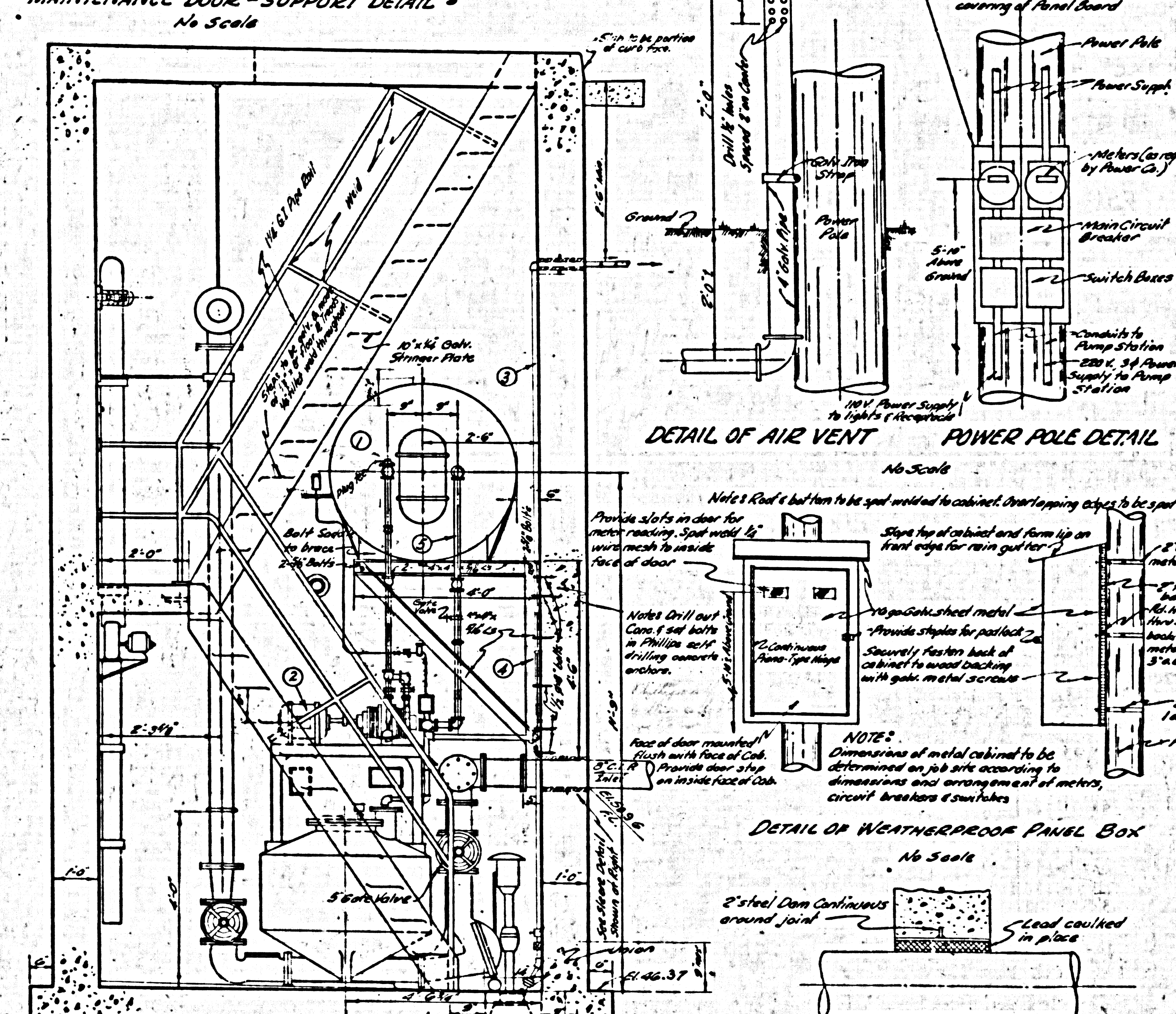
LOCATION PLAN
Scale: 1" = 10'-0"



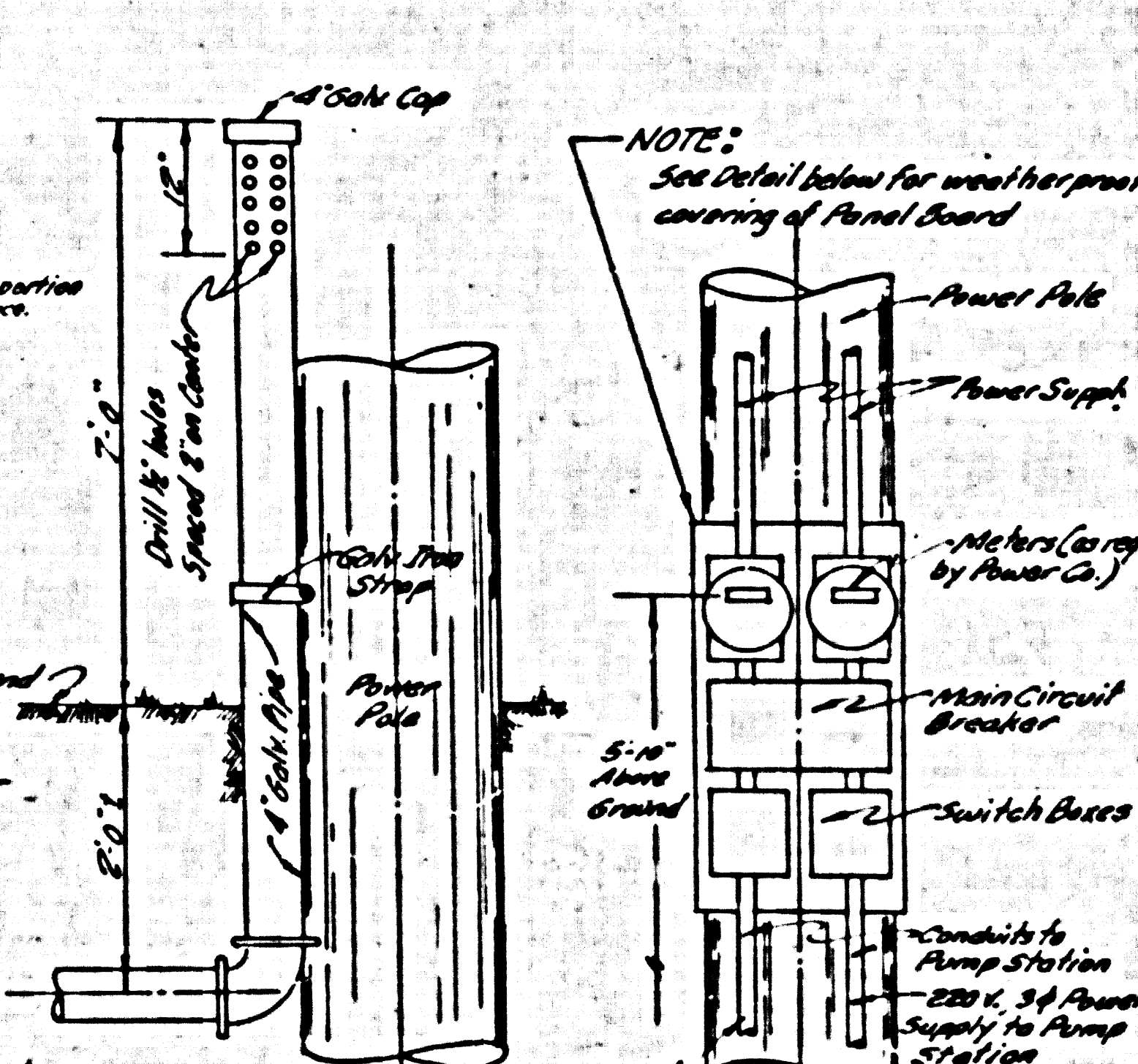
MAINTENANCE DOOR - SUPPORT DETAIL
No Scale



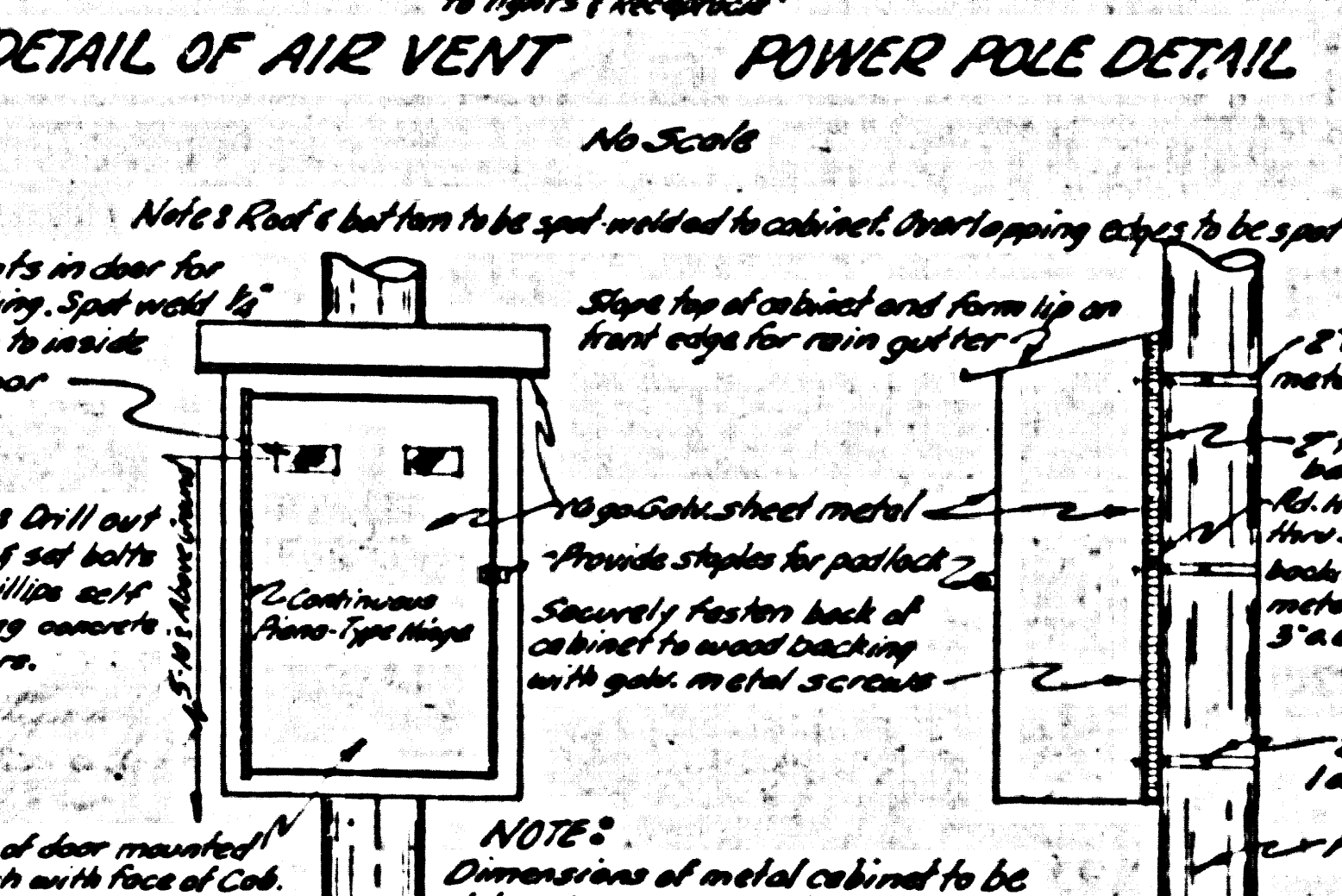
SECTION B-B
Scale: 1/4" = 1'-0"



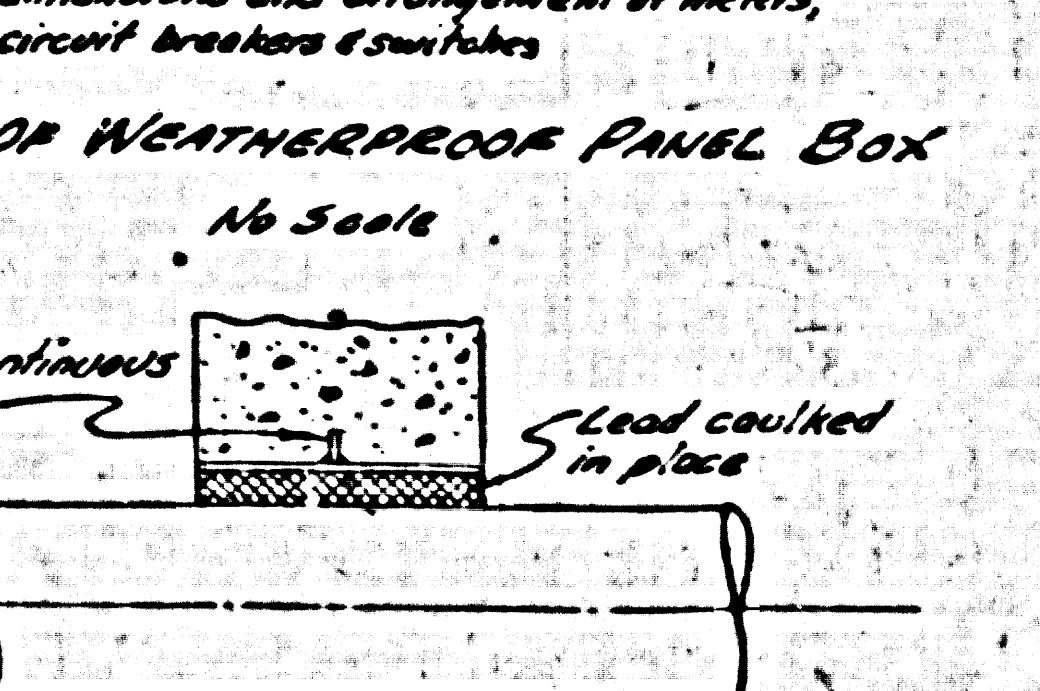
SECTION C-C
Scale: 1/4" = 1'-0"



DETAIL OF AIR VENT
No Scale



DETAIL OF WEATHERPROOF PANEL BOX
No Scale



SLEEVE DETAIL
No Scale

ITEM	QUANTITY	DESCRIPTION
1	1	40" x 120" Horizontal black ASME 50 psi working pressure steel air storage tank with 2" pressure switches, 2" x 1/2" pressure relief valves, 2" x 1/2" pressure diaphragm type three way valves, 2" x 1/2" brass Y strainers, 2" x 1/2" Y strainers w/ S.S. screens, 2" x 1/2" gate valves & flanges per change to 7" N.P., 1-1/2" gate valve blank, 2" from tank, 4" x 2" gate valves, 2" x 1/2" gate valves.
2	2	7 1/2" N.P. Motors (150 rpm 220/110 Volt 3 phase enclosed motors)
3	36 lin. ft.	2 1/2" Galv. Iron Exhaust Pipe & Fittings
4	2	Tank supports (with rooflets) fabricated with 4" x 4" x 1/2" Galv. steel corner drilling. All nuts to be double checked.
5	17 lin. ft.	2 1/2" Galv. Iron Pipe (From Air storage tank) & Fittings
6	18 lin. ft.	2 1/2" Galv. Iron Pipe (From Check Valve to Air Storage Tank) & Fittings
7	2	1/2" Drip Traps - pipe to drain

GENERAL NOTES

1. All materials for construction shall be furnished by the contractor.
2. All materials must comply with the specifications of the County Engineer.
3. The contractor must furnish the necessary permits for the construction.
4. The contractor is to supply the water for the construction.
5. The contractor is to supply the gas for the construction.
6. The contractor is to supply the electricity for the construction.
7. The contractor is to supply the labor for the construction.
8. The contractor is to supply the equipment for the construction.
9. The contractor is to supply the materials for the construction.
10. The contractor is to supply the tools for the construction.
11. The contractor is to supply the safety equipment for the construction.
12. The contractor is to supply the first aid kit for the construction.
13. The contractor is to supply the fire extinguisher for the construction.
14. The contractor is to supply the first aid kit for the construction.
15. The contractor is to supply the fire extinguisher for the construction.
16. The contractor is to supply the first aid kit for the construction.
17. The contractor is to supply the fire extinguisher for the construction.
18. The contractor is to supply the first aid kit for the construction.
19. The contractor is to supply the fire extinguisher for the construction.
20. The contractor is to supply the first aid kit for the construction.

ITEMS NECESSARY FOR THIS REVISION

1. One (1) 40" x 120" horizontal black ASME 50 psi working pressure steel air storage tank.
2. Two (2) pressure switches - close 1/2" diameter are normally open, two normally closed, Class 9012 ACN-4.
3. Two (2) 7 1/2" N.P. 150 rpm 220/110 Volt 3 phase enclosed motors.
4. Two (2) 2" x 1/2" brass Y strainers with S.S. screens.
5. One (1) 2" x 1/2" gate valve - blank.
6. One (1) 2" x 1/2" gate valve - blank.
7. One (1) 2" x 1/2" gate valve - blank.
8. One (1) 2" x 1/2" gate valve - blank.
9. One (1) 2" x 1/2" gate valve - blank.
10. One (1) 2" x 1/2" gate valve - blank.
11. One (1) 2" x 1/2" gate valve - blank.
12. One (1) 2" x 1/2" gate valve - blank.
13. Two (2) 1/2" drip traps.
14. Two (2) 1/2" drip traps.
15. Two (2) 1/2" drip traps.
16. Two (2) 1/2" drip traps.
17. Two (2) 1/2" drip traps.
18. Two (2) 1/2" drip traps.
19. Two (2) 1/2" drip traps.
20. Two (2) 1/2" drip traps.

PRIVATE CONTRACT NO 5207
 REVISION PLANS FOR
 SEWAGE PUMP STATION
 TO SERVE
TRACT NO 24984
 PAGE 7 OF 4 SHEETS
 SCALE 1/2" = 1'-0" EXCEPT AS NOTED AUGUST 1955
 CITY OF NORWALK
 JOHN A. LAMBIE CITY ENGINEER
 PREPARED IN THE OFFICES
 OF
KEMMERER ENGINEERING CO. INC.
 Robert R. Jones
 R.E. 11349
 APPROVED BY
 OFFICE ENGINEER
 SANITATION ENGINEER
 APPROVED
 CHIEF ENGINEER OF CO. SAN. DIST. NO 2
 BY
 OFFICE ENGINEER
 CHECKED BY
 OFFICE ENGINEER
 9-21-55
 OFFICE OF CITY ENGINEER R.E. 11636