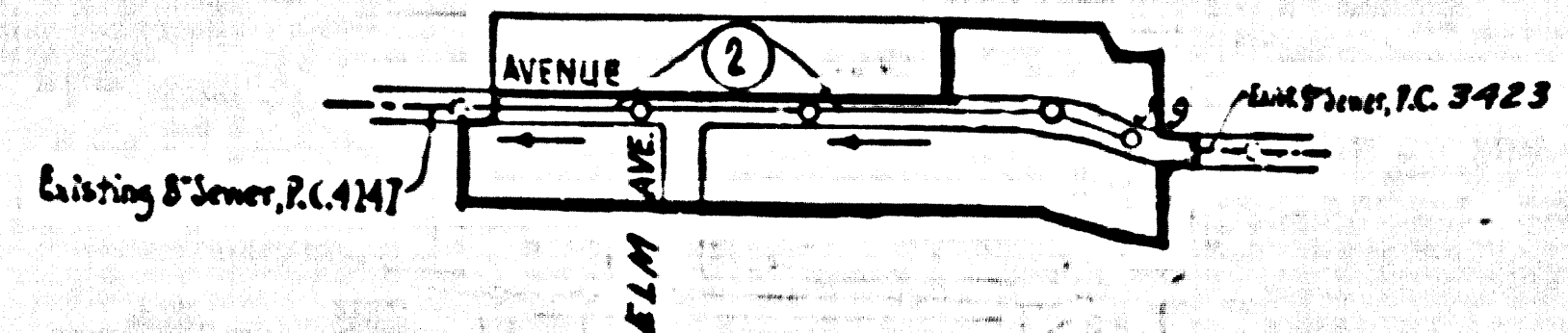


BENCH MARK:

B.M. Elev. 2371.201
 C.S. Mon. @ S.E. Cor. JANE REYNOLDS PARK
 2" I.P. with brass cap marked R.E. 2177 per
 C.S. F.B. 204-214

NOTE: Subtract 0.324' to be on S.L.-7, Elev. 2370.877 datum.

COLLECT CHARGES AS SHOWN
Mary Holt 9/6/59



INDEX MAP
 TRACT NO 25164
 P.C. 5208

LANCASTER BLDG. DIST. NO. 8

- NOTES**
- PROVIDE STAKES ON THE PROPERTY LINE OR PROPERTY LINES PRODUCED AT RIGHT ANGLES TO THE SEWER LINE AT THE CENTER LINE OF EACH MANHOLE.
 - NO REPRESENTATIVE OF THE COUNTY ENGINEER WILL SURVEY OR LAYOUT ANY PORTION OF THE WORK.
 - THE OWNER OR HIS AUTHORIZED REPRESENTATIVE SHALL FURNISH THE COUNTY ENGINEER WITH GRAD SHEETS AND STATION FOR ALL HOUSE LATERALS AND Y BRANCHES AND SHALL PROVIDE STAKES FOR THEM AT THEIR PROPER LOCATIONS WITH STATIONING AND PLAINLY MARKED. ANY CHANGE IN LOCATION SHALL BE REQUESTED BY WRITING BY THE OWNER OR HIS REPRESENTATIVE.
 - NO REVISIONS SHALL BE MADE IN THESE PLANS WITHOUT THE APPROVAL OF THE COUNTY ENGINEER.
 - USE STANDARD MANHOLE FRAMES AND COVERS, S.A.-117.
 - USE STANDARD STRENGTH PIPE.
 - USE CEMENT MORTAR OR MEDIUM-LOCK OF SPEED-SEAL FOR ALL VCR JOINTS. SPEC. SEC. 36.6.20
 - RESURFACE ALL TRENCH WITHIN PAVED AREA TO MEET L.A. COUNTY ROAD DEPT., OR CALIF. STATE HIGHWAY DEPT., REQUIREMENTS IN ACCORDANCE WITH PERM.
 - ENCASE FOUR FEET OF SEWER AT POINTS OF INTERFERENCE WITH POLES, S.A.-119.
 - HOUSE LATERALS TO BE CONSTRUCTED WITH INVERTS AT PROPERTY LINE 6 FEET BELOW CURB GRADE EXCEPT AS NOTED.
 - ALL STRUCTURES SHALL BE BRICK SEWER STRUCTURES, S.A.-194.
 - FOR ALLOWABLE LEAKAGE TEST USE FORMULA NO. 2 SPEC. SEC. 14.
 - THE PRIVATE ENGINEER IS TO FURNISH THE HOUSE LATERAL DEPTH AT THE PROPERTY LINE BELOW THE TOP OF CURB ELEVATION FOR EACH HOUSE LATERAL ON THE GRADE SHEET.
 - ALL PIPE JOINTS THAT ARE WITHIN 10 FEET OF ANY PROPERTY LINE OR IN SANITARY SEWER SHALL BE CELESTIC MORTAR.
 - FIGURES IN CIRCLES AT ENDS OF HOUSE LATERALS INDICATES HOUSE LATERAL SHALL BE CONSTRUCTED WITH 1/2" RISE PER FOOT TO PROPERTY LINE.
 - THE CONTRACTOR SHALL NOTIFY THE CONSTRUCTION AND STORM DRAIN DIVISION BY TELEPHONE WHITEHALL 8-8401 EXT. 40 AT LEAST 30 HOURS BEFORE STARTING ANY WORK UNDER THIS CONTRACT.
 - STANDARD SPECIFICATIONS DATED MAY 15, 1955 APPLY IN CONSTRUCTION OF THIS PROJECT.

PROFILE ALIGNMENT AND GRADE OF **P.C. 5208**
SANITARY SEWERS PAGE 1
 TO BE CONSTRUCTED IN

TRACT N° 25164
PRIVATE CONTRACT NO 5208
 W.S. 70

1 SHEET 2 PAGES
 SCALE: VERT. 1" = 4' HORIZ. 1" = 40' JULY 1959
 PREPARED IN THE OFFICES OF
ROSENTHAL ENGINEERING COMPANY
 BY: *A. J. Rosenthal* REG. C. E. NO. 2825
 FOR LEGEND SEE PLAN NO. S.A.-64 (28659)

NOTES

GRADE TO WHICH THIS IMPROVEMENT IS TO BE CONSTRUCTED ARE SHOWN ON PLAN AND PROFILE. GRADE POINTS FOR TOP OF CURB, CENTER LINE OF STREETS, OR CENTER LINE OF ALLEYS ARE SHOWN BY CIRCLES ON PROFILE. AT ALL POINTS BETWEEN DESIGNATED POINTS THE GRADE SHALL BE ESTABLISHED SO AS TO CONFORM TO A STRAIGHT LINE DRAWN BETWEEN SAID DESIGNATED POINTS.

ELEVATIONS ARE IN FEET ABOVE U.S.C. & G.S. SEA LEVEL DATUM OF 1929.

THE DRAWING AND THE DATA HEREON ARE HEREBY MADE A PART OF THE SPECIFICATIONS.

WORK SHALL BE CONSTRUCTED ACCORDING TO SPECIFICATIONS ON FILE IN THE OFFICE OF THE COUNTY ENGINEER AND SHALL BE PROSECUTED ONLY IN THE PRESENCE OF THE COUNTY ENGINEER.

BEFORE WORK CAN BE STARTED, THE CONTRACTOR MUST OBTAIN A PERMIT TO EXCAVATE IN COUNTY STREETS FROM THE L.A. COUNTY ROAD DEPT., PUBLIC WORKS AND MAKE A DEPOSIT WITH THE COUNTY ENGINEER, ROOM 201 PAV. AMERICAN BLDG., 313 SO. HOUGHTON STREET, SUFFICIENT TO COVER THE COST OF CONSTRUCTION INSPECTION AND RECORD PLANS.

APPROVAL OF THE PLAN BY THE COUNTY OF LOS ANGELES DOES NOT CONSTITUTE A REPRESENTATION AS TO THE ACCURACY OF THE LOCATION OR OF THE EXISTENCE OR NON-EXISTENCE OF ANY UNDERGROUND UTILITY PIPE, OR STRUCTURE WITHIN THE LIMITS OF THIS PROJECT. THIS NOTE APPLIES TO ALL PAGES.

IF WORK IS TO BE DONE IN A STATE HIGHWAY, A PERMIT MUST BE OBTAINED FROM THE STATE OF CALIFORNIA, DIVISION OF HIGHWAYS, 130 SOUTH SPRING STREET.

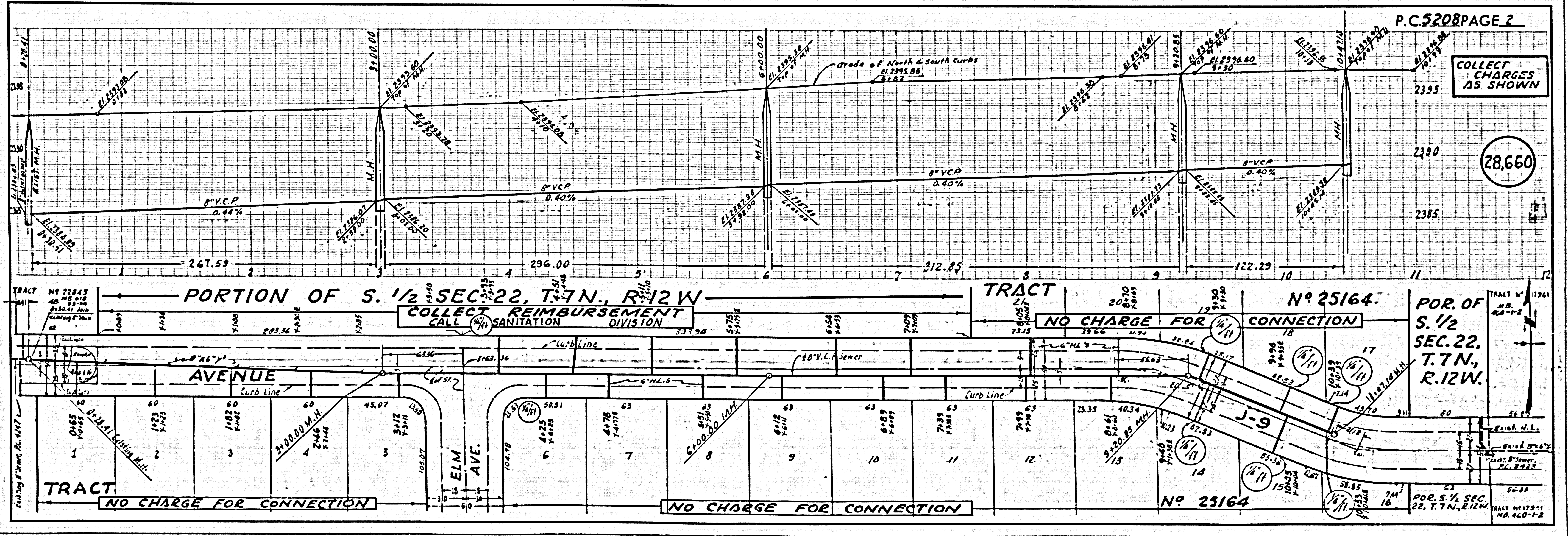
COUNTY OF LOS ANGELES, CALIFORNIA

APPROVED, JOHN A. LAMBE, COUNTY ENGINEER APPROVED, C.E. CAMPBELL, CHIEF ENGINEER
 TO SAN. DIST. NO. 18

BY: *C. E. Campbell* COUNTY ENGINEER BY: *J. Campbell* CHIEF ENGINEER
 AS COUNTY ENGINEER AS COUNTY ENGINEER

CHECKED BY: *W. W. Wada* 9-10-59
 OFFICE OF COUNTY ENGINEER, R.M. C. & N. NO. 3436

RECOMMENDED BY: *Daniel E. Kulas*
 Regional Engineer



COLLECT CHARGES AS SHOWN

(28660)

P.C. 5208 PAGE 2

PORTION OF S. 1/2 SEC. 22, T. 7 N., R. 12 W.

NO CHARGE FOR CONNECTION

NO CHARGE FOR CONNECTION

NO CHARGE FOR CONNECTION

NO 25164

PORTION OF S. 1/2 SEC. 22, T. 7 N., R. 12 W.