

Note: Approval is hereby given contingent upon a field investigation of the completed sewer and all grading operations relating thereto by the County Engineer or his representative, and upon re-orientation of the San Sewer E/W shown hereon. Revised Alignment from Sta. 33+96.88 to Sta. 45+73.83. Added Conc. Encasement. Approved by *[Signature]* Division Engineer 1/24/60

REVISED GRADES TO CONFORM TO CONSTRUCTED BENCH STA. 36+08.53 TO STA. 51+28.83
[Signature] 8-12-60
 OFFICE OF COUNTY ENGINEER, R.E. 3406
 Revised Alignment on Page 2 & Page 3
 Approved: *[Signature]*
 Office of County Engineer

NO CHARGE FOR CONNECTIONS
[Signature]

LOMITA BLDG. DIST. NO. 7.1

- NOTES:
1. PROVIDE STAKES ON THE PROPERTY LINE OR PROPERTY LINES PRODUCED AT RIGHT ANGLES TO THE SEWER LINE AT THE CENTER LINE OF EACH MANHOLE.
 2. NO REPRESENTATIVE OF THE COUNTY ENGINEER WILL SURVEY OR LAY OUT ANY PORTION OF THE WORK.
 3. THE OWNER OR HIS AUTHORIZED REPRESENTATIVE SHALL FURNISH THE COUNTY ENGINEER WITH GRADE SHEETS AND STATIONING FOR ALL HOUSE LATERALS AND V BRANCHES AND SHALL PROVIDE STAKES FOR THEM AT THEIR PROPER LOCATIONS WITH STATIONING PLAINLY MARKED. ANY CHANGE IN LOCATION SHALL BE REQUESTED IN WRITING BY THE OWNER OR HIS REPRESENTATIVE.
 4. THE PRIVATE ENGINEER SHALL FURNISH THE HOUSE LATERAL DEPTH AT THE PROPERTY LINE BELOW THE TOP OF CURB ELEVATION FOR EACH HOUSE LATERAL ON THE GRADE SHEET.
 5. NO REVISIONS SHALL BE MADE IN THESE PLANS WITHOUT THE APPROVAL OF THE COUNTY ENGINEER.
 6. USE STANDARD MANHOLE FRAMES AND COVERS, S-117, EXCEPT AS NOTED.
 7. USE STANDARD STRENGTH PIPE EXCEPT AS NOTED.
 8. USE CEMENT MORTAR OR "WEDGE-LOCK" FOR ALL V.C.P. JOINTS PER SPEC., SECS. 34 & 42.
 9. REINFORCE ALL TRENCH WITHIN PAVED AREA TO MEET L.A. COUNTY ROAD DEPT. OR CALIF. STATE HIGHWAY REQUIREMENTS IN ACCORDANCE WITH PERMITS.
 10. ENCASE FOUR FEET OF SEWER AT POINTS OF INTERFERENCE WITH POLES, CASE III, S-1172.
 - 11.
 12. ALL STRUCTURES SHALL BE BRICK SEWER STRUCTURES, S-104, EXCEPT AS NOTED.
 13. FOR ALLOWABLE LEAKAGE TEST USE FORMULA NO. 1, SPEC., SEC. 34.
 14. MANHOLE TOPS IN UNIMPROVED RIGHTS-OF-WAY TO BE SIX INCHES ABOVE FINISHED GRADE.
 15. THE CONTRACTOR SHALL NOTIFY THE CONSTRUCTION & STORM DRAIN DIVISION BY TELEPHONE, MADISON 9-27, EXT. 342, AT LEAST TWENTY-FOUR HOURS BEFORE STARTING ANY WORK UNDER THIS CONTRACT.
 16. STANDARD SPECIFICATIONS DATED 1954, AND APPLICABLE IN THE CONSTRUCTION OF THIS WORK.
 17. CONTRACTOR TO OBTAIN ROAD PERMIT FROM CITY OF ROLLING HILLS ESTABLISHED BEFORE WORK CAN BE STARTED IN CITY STREETS.
 18. ENCASE SEWER WHERE DEPTH OF COVER IS 4 FEET OR LESS, CASE III, S-1172.
 19. MINIMUM DISTANCE FROM MANHOLE TOP TO STREET TO BE 6'.
 20. NO CONSTRUCTION SHALL BE PERMITTED IN PAVED AREAS UNLESS ACCEPTABLE CERTIFICATION IS SUBMITTED TO THE CONSTRUCTION DIVISION OF THE COUNTY ENGINEER'S DEPARTMENT THAT COMPACTION IS GREATER THAN 90%.
 21. IF COMPACTION IS LESS THAN 90%, THE SEWER MUST BE ENCASED AS SHOWN ON PLAN.
 22. IF COMPACTION IS GREATER THAN 90%, CURBING AND SPECIAL MANHOLE BASES ARE NOT REQUIRED, HOWEVER, JOINT COMPACTION MUST BE SUBSTITUTED FOR CEMENT MORTAR JOINTS AS PULLED AREAS.

ENGINEERING SERVICE CORPORATION
 1127 W. WASHINGTON BLVD.
 LOS ANGELES 15, CALIF. RI. 9-7281

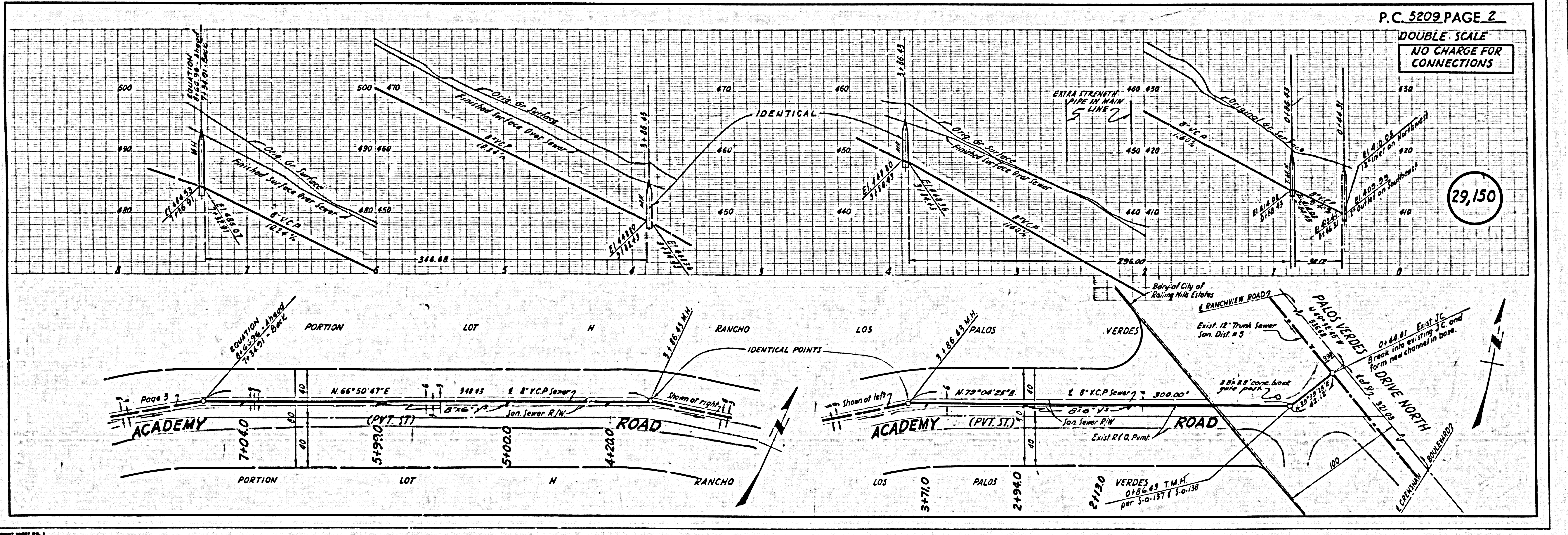
REVISIONS	TRACED BY: W.B.
	DES'G'D BY: C.M.R.
	C.K'D BY: A.A.M.E.
	SUBMITTED:

SUB STRUCTURES O.K'D	W. O. NO.	DWS. NO.	DATE	SCALE	L. B.	P. B.
	6777-77		MAY, 1959	As Noted	837, 870	574

PROFILE ALIGNMENT AND GRADE OF
SANITARY SEWERS PAGE 1
 TO BE CONSTRUCTED IN
 EASEMENT WESTERLY OF
 PALOS VERDES DRIVE NORTH

PRIVATE CONTRACT NO. 5209
 W.S. 27
 4 SHEETS, 8 PAGES
 SCALE: VERT. 1"=4' HORIZ. 1"=40'
 MAY, 1959
 PREPARED IN THE OFFICES OF
 ENGINEERING SERVICE CORPORATION
 REG. C. E. NO. 3632
 FOR LEGEND SEE PLAN NO. S-A-64

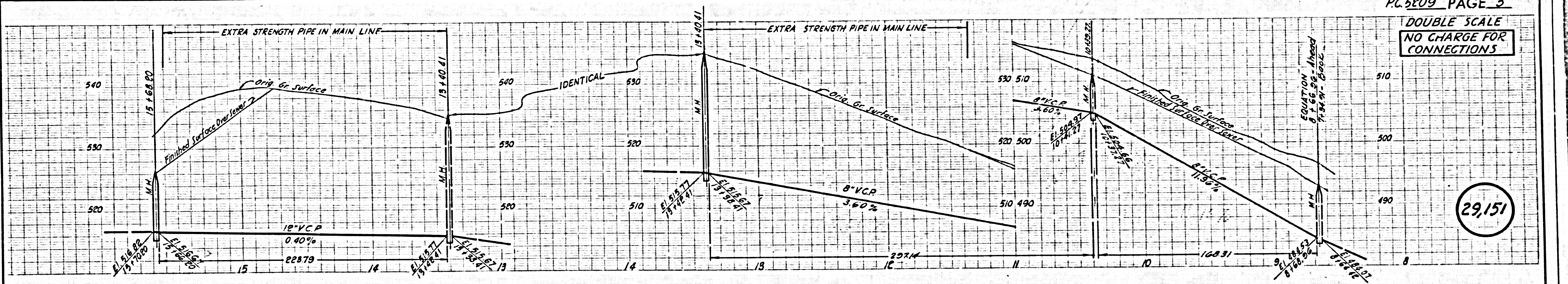
COUNTY OF LOS ANGELES, CALIFORNIA
 APPROVED, JOHN A. LAMBE, COUNTY ENGINEER
 APPROVED, C.P. COMPTON, CHIEF ENGINEER
 BY: *[Signature]* ASST. SANITATION ENGINEER
 BY: *[Signature]* CHIEF ENGINEER
 CHECKED BY: *[Signature]*
 OFFICE OF COUNTY ENGINEER, REG. C. E. NO. 3406
 SUBMITTED BY: *[Signature]*
 PALOS VERDES, CALIFORNIA VACILEY REGIONAL ENGINEER



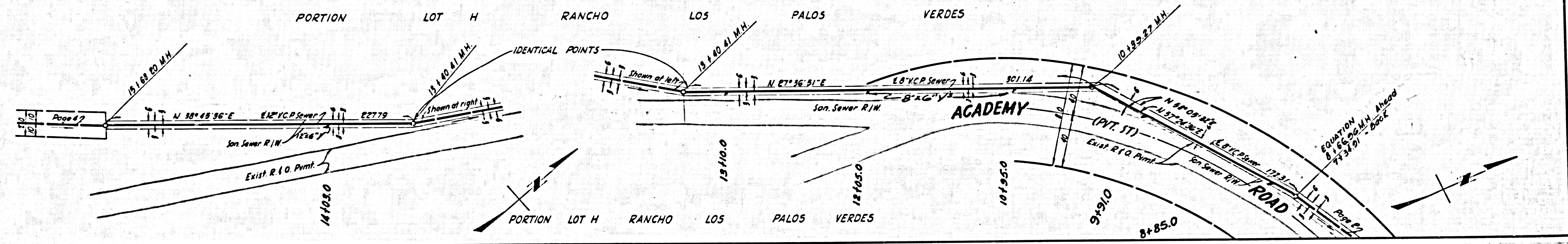
P.C. 5209 PAGE 2
 DOUBLE SCALE
 NO CHARGE FOR CONNECTIONS

29,150

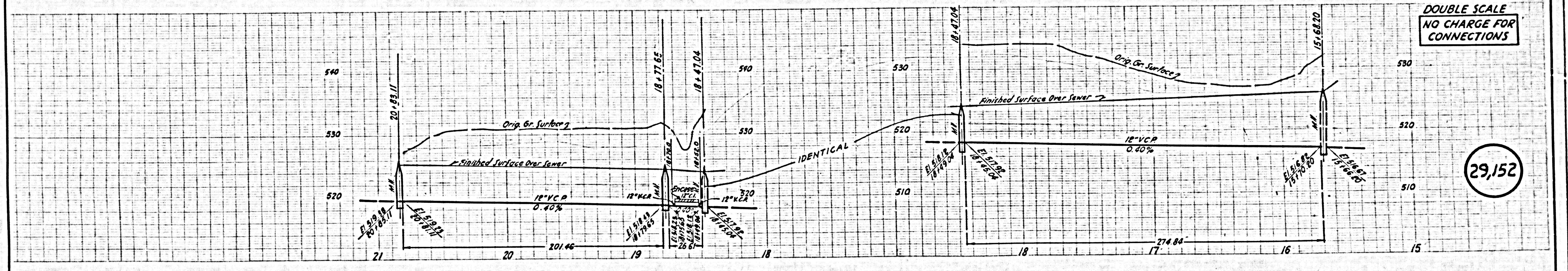
DOUBLE SCALE
NO CHARGE FOR
CONNECTIONS



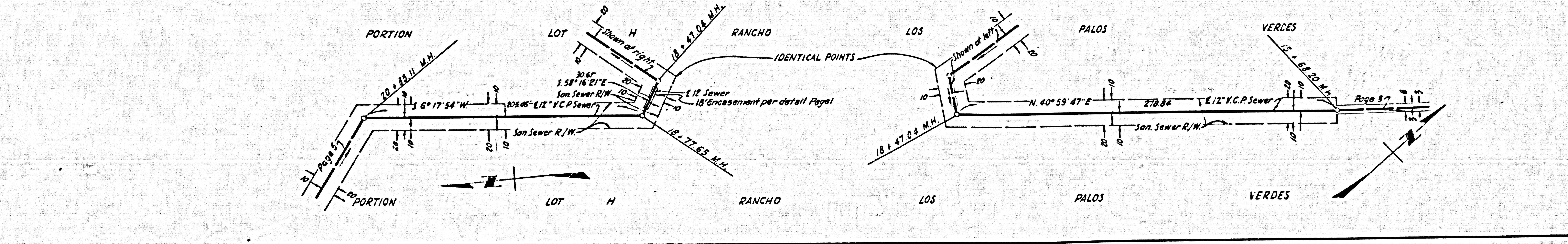
29,151



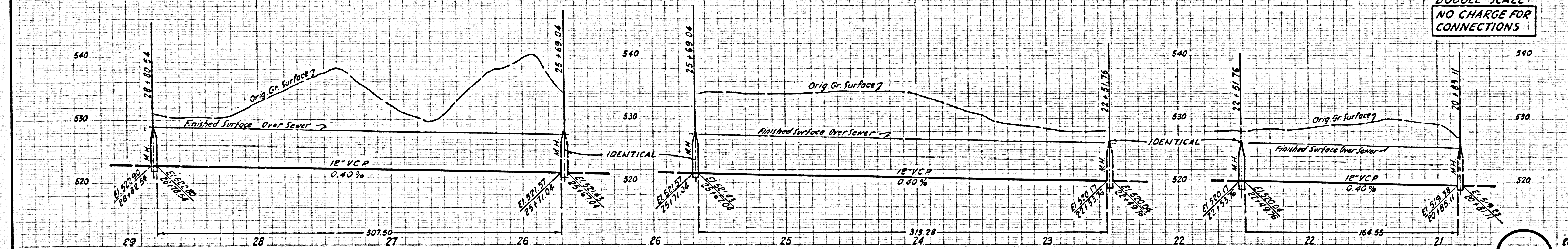
DOUBLE SCALE
NO CHARGE FOR
CONNECTIONS



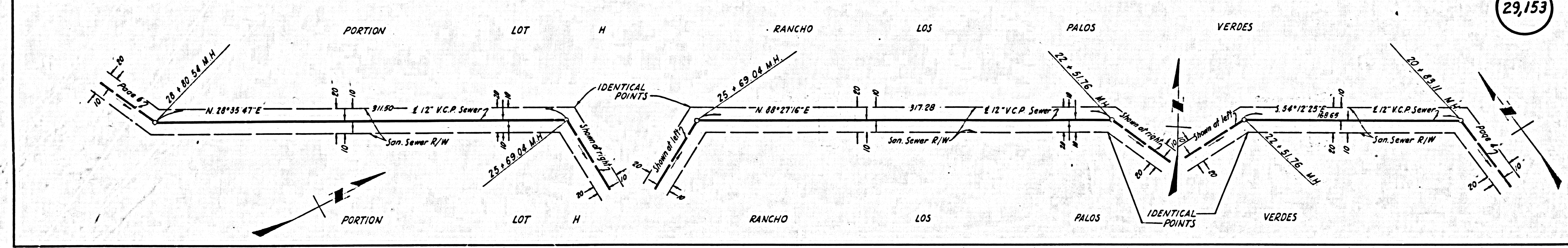
29,152



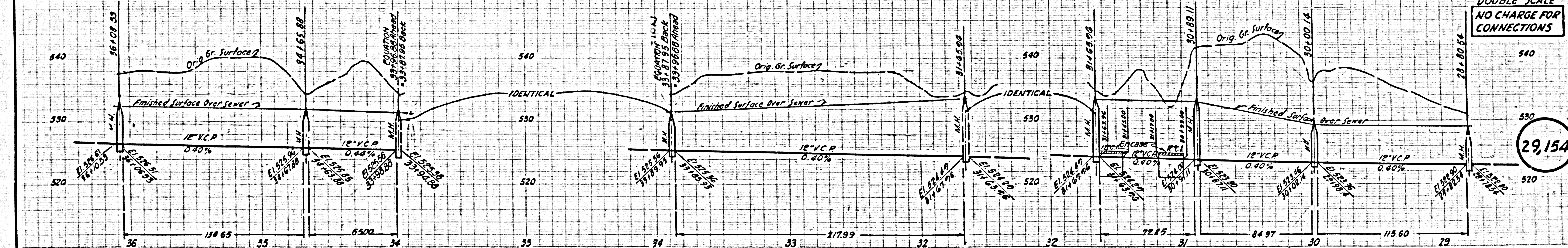
DOUBLE SCALE
NO CHARGE FOR
CONNECTIONS



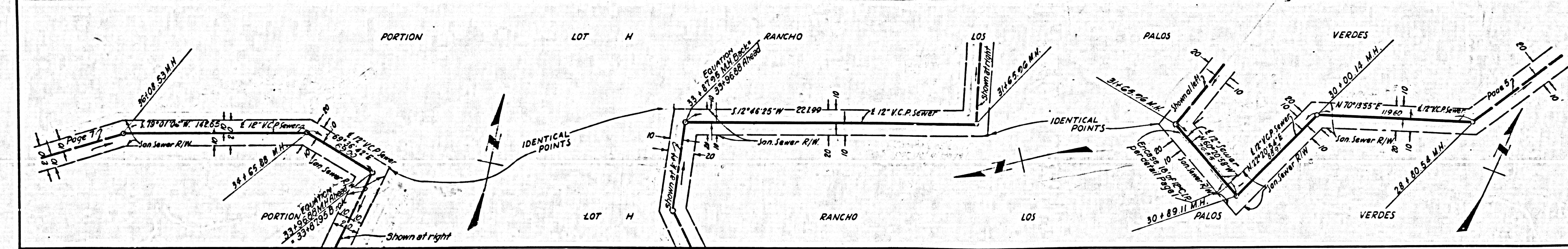
29,153



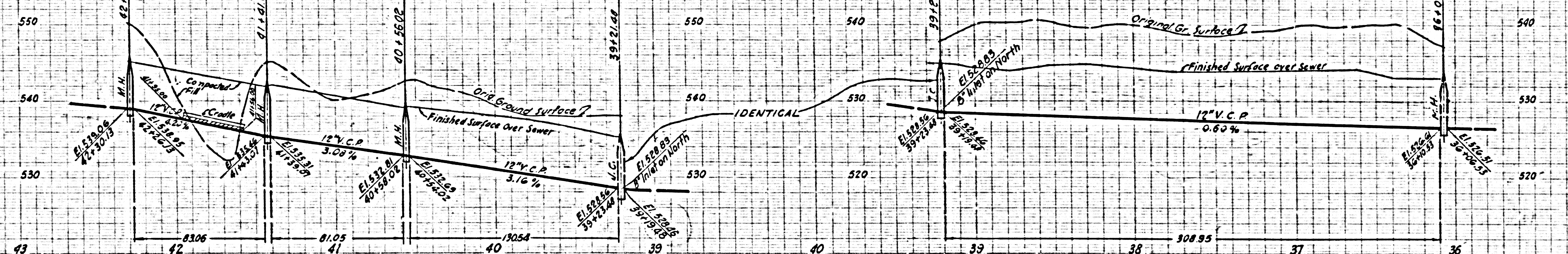
DOUBLE SCALE
NO CHARGE FOR
CONNECTIONS



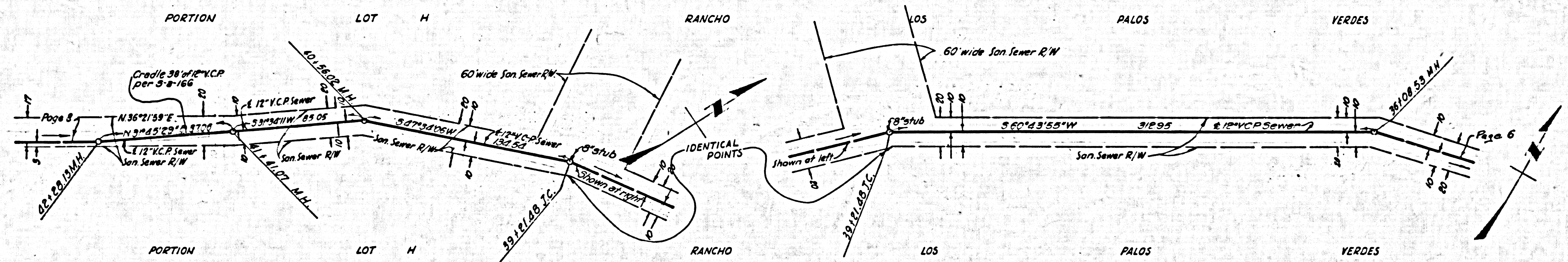
29,154



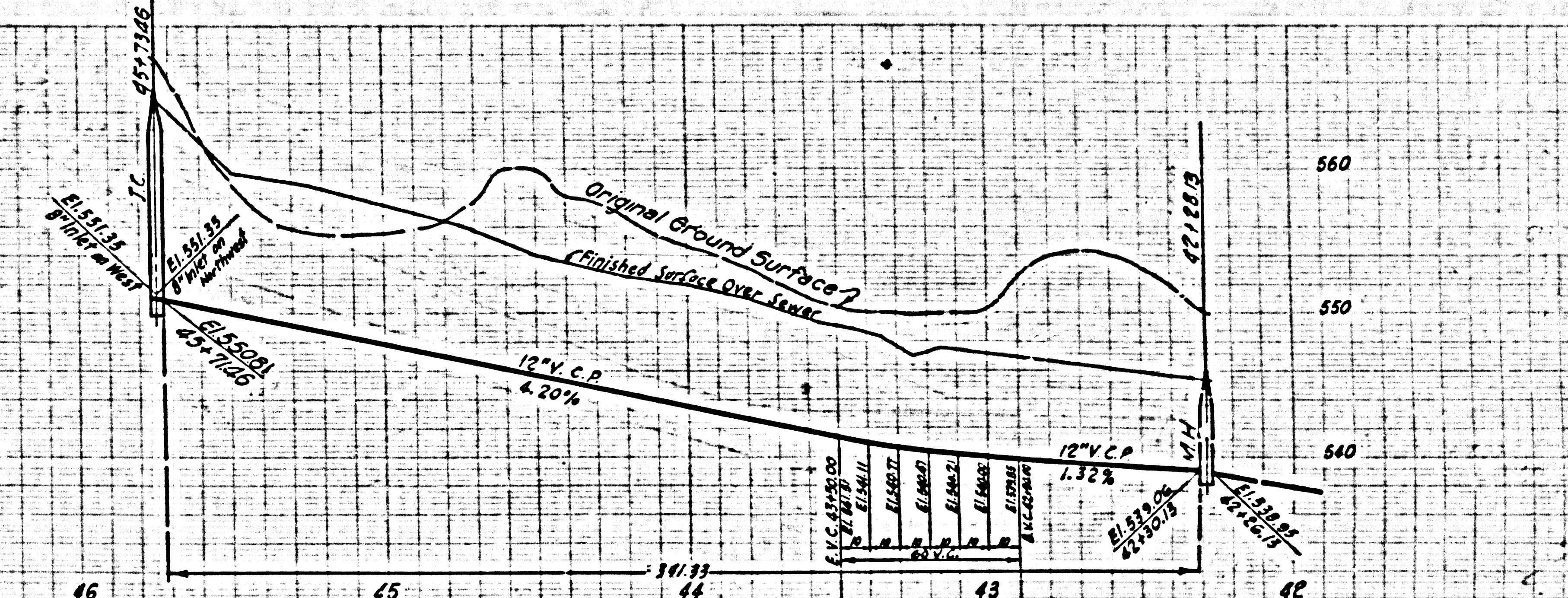
DOUBLE SCALE
NO CHARGE FOR
CONNECTIONS



29,155



DOUBLE SCALE
NO CHARGE FOR
CONNECTIONS



29,156

