

LA PUENTE BLDG. DIST. NO. 202

PROFILE ALIGNMENT AND GRADE OF P.C. 5210  
SANITARY SEWERS PAGE 1

TO BE CONSTRUCTED IN  
BROMAR STREET  
AND A  
SANITARY SEWER RIGHT OF WAY  
PRIVATE CONTRACT NO. 5210

W.S. 38  
1 SHEET, 2 PAGES

SCALE:  $\frac{1"}{4'}$  VERT.  $\frac{1"}{20'}$  HORIZ. JULY, 1959

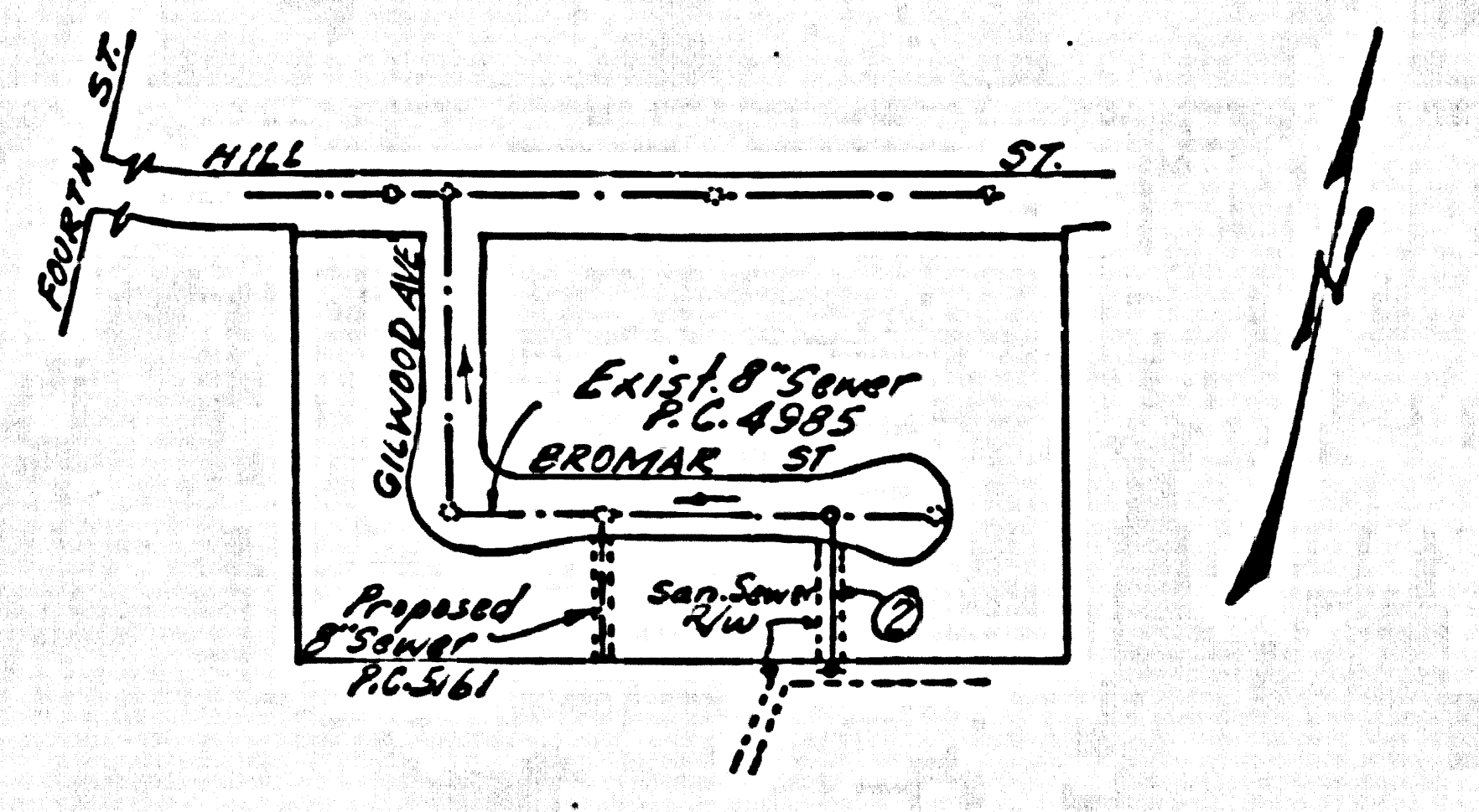
PREPARED IN THE OFFICES OF  
HAROLD L. JOHNSON

30475

BY: Harold L. Johnson  
REG. C. E. NO. 7688

FOR LEGEND SEE PLAN NO. S-A-64

B.M. 56 1031 LA Co Surv. Mon. El. 353.710  
Intersection of Glendora Ave. & Hill St. to E.  
N. Edge of Brass Co. - Base Line 1955



INDEX MAP  
SCALE:  $1" = 200'$   
P.C. 5210

- NOTES:
1. PROVIDE STAKES ON THE PROPERTY LINE OR PROPERTY LINES PRODUCED AT RIGHT ANGLES TO THE SEWER LINE AT THE CENTER LINE OF EACH MANHOLE.
  2. NO REPRESENTATIVE OF THE CITY ENGINEER WILL SURVEY OR LAY OUT ANY PORTION OF THE WORK.
  3. THE OWNER OR HIS AUTHORIZED REPRESENTATIVE SHALL FURNISH THE CITY ENGINEER WITH GRADE SHEETS AND STATIONING FOR ALL HOUSE LATERALS AND Y BRANCHES AND SHALL PROVIDE STAKES FOR THEM AT THEIR PROPER LOCATIONS WITH STATIONING PLAINLY MARKED. ANY CHANGE IN LOCATION SHALL BE REQUESTED IN WRITING BY THE OWNER OR HIS REPRESENTATIVE.
  4. THE PRIVATE ENGINEER SHALL FURNISH THE HOUSE LATERAL DITCH AT THE PROPERTY LINE BELOW THE TOP OF CURB ELEVATION FOR EACH HOUSE LATERAL ON THE GRADE SHEET.
  5. NO REVISIONS SHALL BE MADE IN THESE PLANS WITHOUT THE APPROVAL OF THE CITY ENGINEER.
  6. USE STANDARD MANHOLE FRAMES AND COVERS, S-117.
  7. USE STANDARD STRENGTH PIPE EXCEPT AS NOTED.
  8. USE CEMENT MORTAR OR "WEDGE-LOCK" OR "SPREAD-SEAL" FOR ALL V.C.P. JOINTS PER SPEC., SECC. 36 & 41.
  9. RESURFACE ALL TRENCH WITHIN PAVED AREA TO MEET L.A. COUNTY ROAD DEPT. OR CALIF. STATE HIGHWAY REQUIREMENTS IN ACCORDANCE WITH PERMITS.
  10. INCREASE FOUR FEET OF SEWER AT POINTS OF INTERFERENCE WITH POLES, CASE III, S-172.
  11. HOUSE LATERALS TO BE CONSTRUCTED WITH 4" V.C.P. PIPE - 12' MIN. COVER - 12" DIA. MANHOLE - 18" DIA. GROUND - GRADE SHEET AS NOTED.
  12. ALL STRUCTURES SHALL BE BRICK SEWER STRUCTURES, S-114.
  13. FOR ALLOWABLE LEAKAGE TEST USE FORMULA NO. 1, SPEC., SEC. 34.
  14. MANHOLE TOPS IN UNIMPROVED RIGHTS-OF-WAY TO BE SIX INCHES ABOVE FINISHED GRADE.
  15. THE CONTRACTOR SHALL NOTIFY THE CONSTRUCTION & STORM DRAIN DIVISION BY TELEPHONE, MADISON 9-4742, EXT. 342, AT LEAST TWENTY-FOUR HOURS BEFORE STARTING ANY WORK UNDER THIS CONTRACT.

DOUBLE SCALE

NO CHARGE FOR CONNECTIONS

CITY OF LA PUENTE

APPROVED: [Signature]  
CITY MANAGER

NOTE:  
GRADES TO WHICH THIS IMPROVEMENT IS TO BE CONSTRUCTED ARE SHOWN ON PLANS AND PROFILES. GRADE POINTS FOR TOP OF CURB, CENTER LINE OF STREETS, OR CENTER LINE OF ALLEYS ARE SHOWN BY CIRCLES ON PROFILES. AT ALL POINTS BETWEEN DESIGNATED POINTS THE GRADE SHALL BE ESTABLISHED SO AS TO CONFORM TO A STRAIGHT LINE DRAWN BETWEEN SAID DESIGNATED POINTS.  
ELEVATIONS ARE IN FEET ABOVE U.S.C. & G.S. MEAN LEVEL DATUM OF 1929.  
THIS DRAWING AND THE DATA HEREON ARE HEREBY MADE A PART OF THE SPECIFICATIONS.  
WORK SHALL BE CONSTRUCTED ACCORDING TO SPECIFICATIONS ON FILE IN THE OFFICE OF THE CITY ENGINEER AND SHALL BE INSPECTED ONLY IN THE PRESENCE OF THE CITY ENGINEER.  
BEFORE WORK CAN BE STARTED, THE CONTRACTOR MUST OBTAIN A PERMIT TO EXCAVATE IN CITY STREETS FROM THE L.A. COUNTY ROAD DEPT., DISTRICT OFFICE NO. 1, AND MAKE A DEPOSIT WITH THE CITY OF LA PUENTE SUFFICIENT TO COVER THE COST OF CONSTRUCTION INSPECTION AND RECORD PLANS.  
APPROVAL OF THIS PLAN BY THE CITY OF LA PUENTE DOES NOT CONSTITUTE A REPRESENTATION AS TO THE ACCURACY OF THE LOCATION OR THE EXISTENCE OR NON-EXISTENCE OF ANY UNDERGROUND UTILITY PIPE, OR STRUCTURE WITHIN THE LIMITS OF THIS PROJECT. THIS NOTE APPLIES TO ALL PAGES.  
IF WORK IS TO BE DONE IN A STATE HIGHWAY, A PERMIT MUST BE OBTAINED FROM THE STATE OF CALIFORNIA, DIVISION OF HIGHWAYS, 130 SOUTH SPRING STREET.

CITY OF LA PUENTE, CALIFORNIA

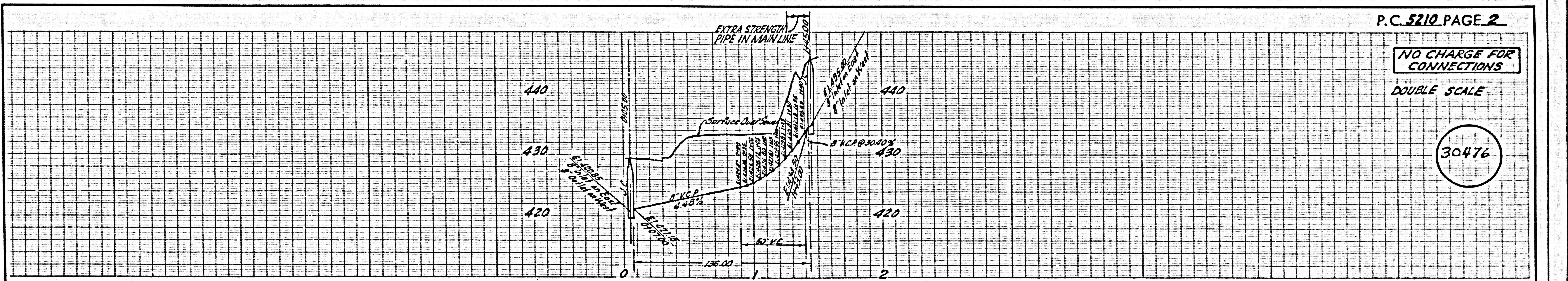
APPROVED, JOHN A. LAMME, CITY ENGINEER

APPROVED, C.R. COMPTON, CHIEF ENGINEER

BY: [Signature]  
ASST. SANITATION ENGINEER

BY: [Signature]  
OFFICE ENGINEER

CHECKED BY: [Signature]  
OFFICE OF CITY ENGINEER, REG. C. E. NO. 9486

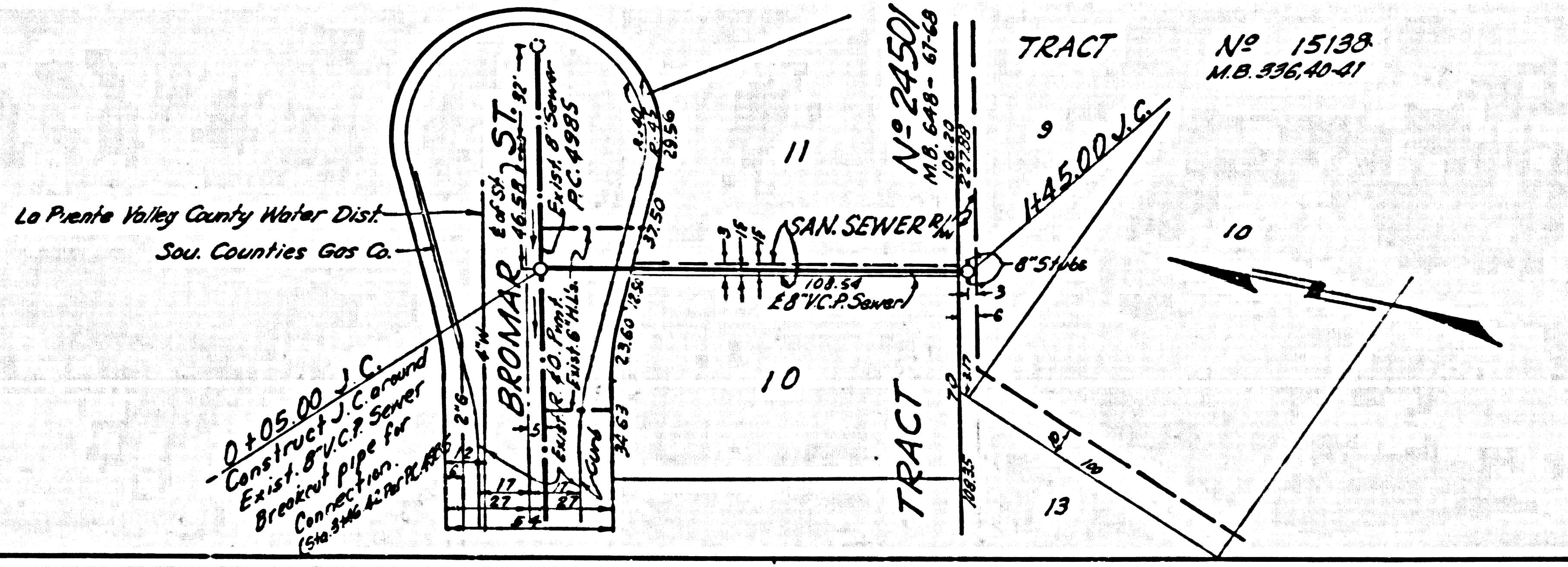


P.C. 5210 PAGE 2

NO CHARGE FOR CONNECTIONS

DOUBLE SCALE

30476



La Puente Valley County Water Dist.  
Sou. Counties Gas Co.

0+05.00 V.C. Construct J.C. around Exist. 8" V.C.P. Sewer Breakout pipe for Connection. (See Note 12. Part 2.00)