

NEAR SLAUSON AVENUE, MALT AVENUE, 51.0' N OF THE CENTERLINE OF SLAUSON AVENUE AND 21.6' W OF THE CENTERLINE OF MALT AVENUE, IN A WELL CUT THRU THE PAVEMENT AND PROTECTED BY A CAST IRON COVER MARKED "COUNTY SURVEYOR MONUMENT", A STANBARD COUNTY SURVEYOR MONUMENT P.C. 521, MARKED 3/4" DIA. 4-19, 1951 SET IN CONCRETE 18" BELOW SURFACE. FB 1206-24 1951 ADJUSTED ELEVATION 143.247

# EAST LOS ANGELES BLDG. DIST. NO. 6

PROFILE ALIGNMENT AND GRADE OF P.C. 5221  
**SANITARY SEWERS PAGE 1**  
 TO BE CONSTRUCTED IN J.N. 0351.33

**TUBEWAY AVENUE**  
 PRIVATE CONTRACT NO. 5221  
 W.S. 36

1 SHEET OF 2 PAGES  
 SCALE: 1" = 10' HORIZ. 1" = 4' VERT. JULY, 1959  
 PREPARED IN THE OFFICES OF

28,385

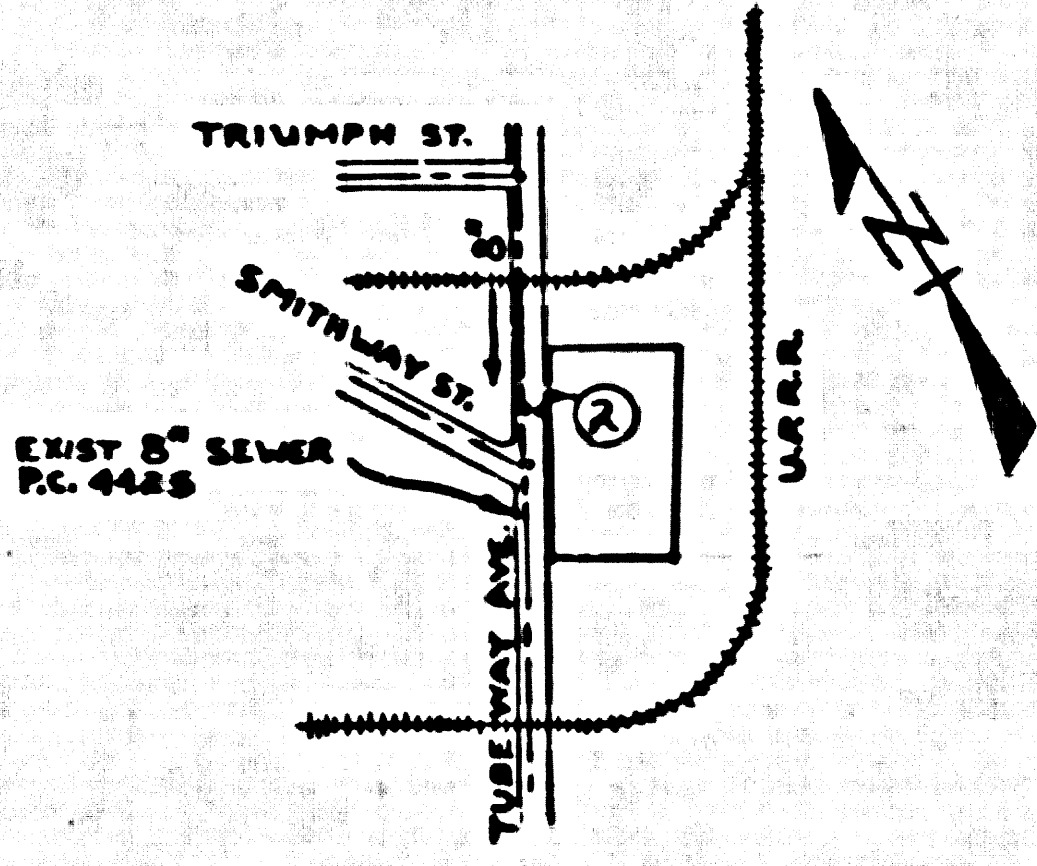
By Lloyd G. Wallis  
 REG. C. E. NO. 8338

FOR LEGEND SEE PLAN NO. S-A-64

- NOTES
1. PROVIDE STAKES ON THE PROPERTY LINE OR PROPERTY LINES PRODUCED AT RIGHT ANGLES TO THE SEWER LINE AT THE CENTER LINE OF EACH MANHOLE.
  2. NO REPRESENTATIVE OF THE COUNTY ENGINEER WILL SURVEY OR LAY OUT ANY PORTION OF THE WORK.
  3. THE OWNER OR HIS AUTHORIZED REPRESENTATIVE SHALL FURNISH THE COUNTY ENGINEER WITH 25 SHEETS AND STATIONINGS FOR ALL HOUSE LATERALS AND Y BRANCHES AND SHALL PROVIDE STAKES FOR THEM AT THEIR PROPER LOCATIONS WITH STATIONING PLAINLY MARKED. ANY CHANGE IN LOCATION SHALL BE REQUESTED IN WRITING BY THE OWNER OR HIS REPRESENTATIVE.
  4. THE PRIVATE ENGINEER SHALL FURNISH THE HOUSE LATERAL DEPTH AT THE PROPERTY LINE BELOW THE TOP OF CURB ELEVATION FOR EACH HOUSE LATERAL ON THE GRADE SHEET.
  5. NO REVISIONS SHALL BE MADE IN THESE PLANS WITHOUT THE APPROVAL OF THE COUNTY ENGINEER.
  6. USE STANDARD MANHOLE FRAMES AND COVERS, S-117, EXCEPT AS NOTED.
  7. USE STANDARD STRENGTH PIPE EXCEPT AS NOTED.
  8. USE CEMENT MORTAR OR "WEDGE-LOCK" OR "SPED-SEAL" FOR ALL V.C.P. JOINTS PER SPEC'S, SECS. 34 & 35.
  9. RESURFACE ALL TRENCHES WITHIN PAVED AREA TO MEET L.A. COUNTY ROAD DEPT. OR CALIF. STATE HIGHWAY REQUIREMENTS IN ACCORDANCE WITH PERMITS.
  10. ENCASE FOUR FEET OF SEWER AT POINTS OF INTERFERENCE WITH POLES, CASE 33, S-6-172.
  11. HOUSE LATERALS TO BE CONSTRUCTED WITH INVERTS AT PROPERTY LINE 5 FEET BELOW CURB GRADE EXCEPT AS NOTED.
  12. ALL STRUCTURES SHALL BE BRICK SEWER STRUCTURES, S-6-104, EXCEPT AS NOTED.
  13. FOR ALLOWABLE LEAKAGE TEST USE FORMULA NO. 1, SPEC'S, SEC. 34.
  14. MANHOLE TOPS IN UNIMPROVED RIGHTS-OF-WAY TO BE SIX INCHES ABOVE FINISHED GRADE.
  15. THE CONTRACTOR SHALL NOTIFY THE CONSTRUCTION & STORM DRAIN DIVISION BY TELEPHONE, MADISON 9-5747, EXT. 363, AT LEAST TWENTY-FOUR HOURS BEFORE STARTING ANY WORK UNDER THIS CONTRACT.
  16. STANDARD SPECIFICATIONS DATED MAY 15, 1959 APPLY IN THE CONSTRUCTION OF THIS PROJECT.

**NO CHARGE FOR CONNECTION**  
L.M. Caldwell

REVISION - MANLINE  
J.K. Wade DATE 11-2-59  
 OFFICE OF THE COUNTY ENGINEER REG. C.E. NO. 9466



INDEX MAP  
 SCALE 1"=600'

NOTE: GRADES TO WHICH THIS IMPROVEMENT IS TO BE CONSTRUCTED ARE SHOWN ON PLANS AND PROFILES. GRADE POINTS FOR TOP OF CURB, CENTER LINE OF STREET, OR CENTER LINE OF ALLEYS ARE SHOWN BY CIRCLES ON PROFILES AT ALL POINTS BETWEEN DESIGNATED POINTS THE GRADE SHALL BE ESTABLISHED SO AS TO CONFORM TO A STRAIGHT LINE DRAWN BETWEEN SAID DESIGNATED POINTS.

ELEVATIONS ARE IN FEET ABOVE U.S.C. & G.S. SEA LEVEL DATUM OF 1929.

THIS DRAWING AND THE DATA HEREON ARE HEREBY MADE A PART OF THE SPECIFICATIONS.

WORK SHALL BE CONSTRUCTED ACCORDING TO SPECIFICATIONS ON FILE IN THE OFFICE OF THE COUNTY ENGINEER AND SHALL BE PROSECUTED ONLY IN THE PRESENCE OF THE COUNTY ENGINEER.

BEFORE WORK CAN BE STARTED, THE CONTRACTOR MUST OBTAIN A PERMIT TO EXCAVATE IN COUNTY STREETS FROM THE L.A. COUNTY ROAD DEPT., DISTRICT OFFICE NO. 6, AND MAKE A DEPOSIT WITH THE COUNTY ENGINEER, ROOM 35, SAN AMERICAN BUILDING, 218 SO. BROADWAY SUFFICIENT TO COVER THE COST OF CONSTRUCTION INSPECTION AND RECORD PLANS.

APPROVAL OF THIS PLAN BY THE COUNTY OF LOS ANGELES DOES NOT CONSTITUTE A REPRESENTATION AS TO THE ACCURACY OF THE LOCATION, DEPTH OR THE EXISTENCE OR NON-EXISTENCE OF ANY UNDERGROUND UTILITY PIPE, OR STRUCTURE WITHIN THE LIMITS OF THIS PROJECT. THIS NOTE APPLIES TO ALL PAGES.

IF WORK IS TO BE DONE IN A STATE HIGHWAY, A PERMIT MUST BE OBTAINED FROM THE STATE OF CALIFORNIA, DIVISION OF HIGHWAYS, 128 SOUTH BRIDGE STREET.

COUNTY OF LOS ANGELES, CALIFORNIA

APPROVED, JOHN A. LAMBE, COUNTY ENGINEER APPROVED, C.A. COMPTON, CHIEF ENGINEER  
 CO. SEAL NO. 2

BY C.E. Priddy ASSISTANT SANITATION ENGINEER BY J. Brockman OFFICE ENGINEER  
 CO. SEAL NO. 2

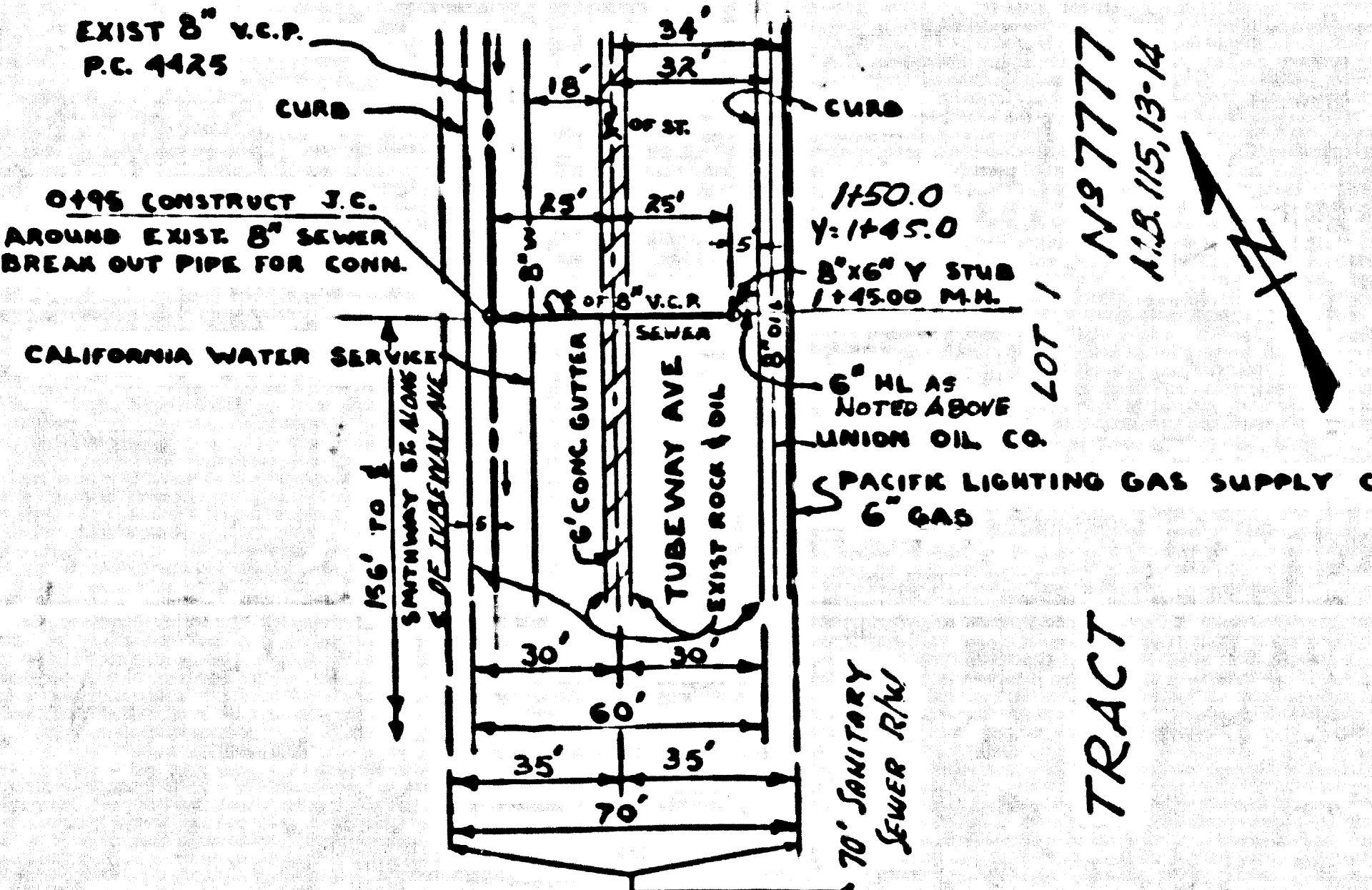
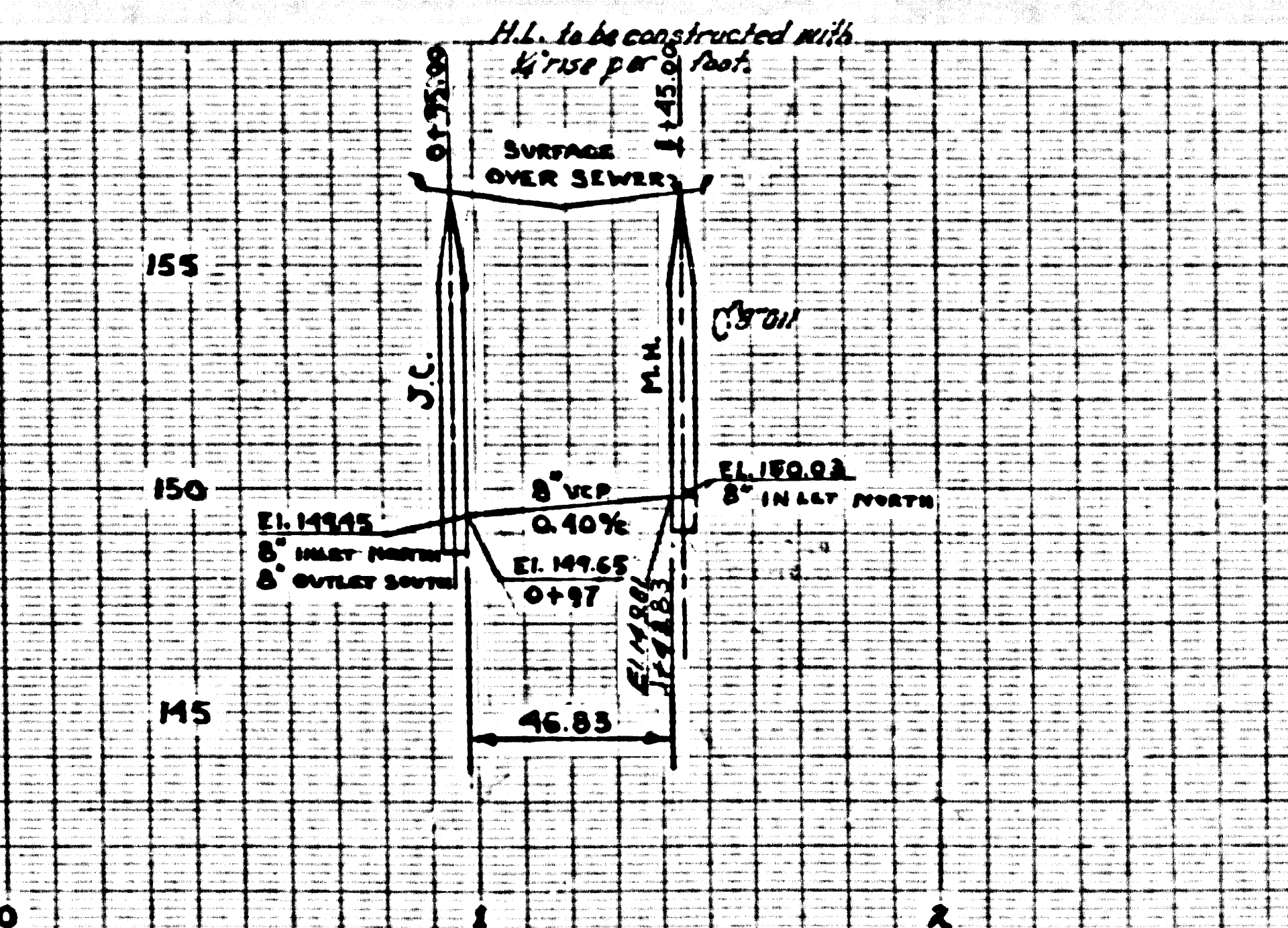
BY Don Williams CHECKED BY J.K. Wade 11-15-59  
 OFFICE OF COUNTY ENGINEER, REG. C.E. NO. 9466

SUBMITTED N.F. Brown SAN GABRIEL VALLEY REGIONAL ENGINEER

P.C. 5221 PAGE 2

**NO CHARGE FOR CONNECTION**

28,386



197777  
 11/2/59-14

TRACT