

Trim Line

B.M. #2 EL. 7609, FB 975 Pp. 19  
Paramount Blvd. & Rosecrans Ave.  
2nd Tower East, chis. 3 notches on nut,  
S.W. Cor. of Tower #31, chis B.M. #2  
above on Angle iron

### PARAMOUNT BLDG DIST NO. 404

PC No 5227

COA Job No. 0864.17

PROFILE, ALIGNMENT AND GRADE OF  
SANITARY SEWERS

TO BE CONSTRUCTED IN  
**PARAMOUNT PARK**  
AND OTHER RIGHTS OF WAY

PAGE 1 OF 2 PAGES

SCALE: HORIZ. 1" = 40 FT.  
VERT. 1" = 10 FT.

DECEMBER, 1957

CITY OF PARAMOUNT, CALIFORNIA

John A. Lambie

CITY ENGINEER

SUBMITTED *Walter A. ...*

APPROVED *C. R. Compton*

C. R. COMPTON  
CHIEF ENGINEER OF COUNTY  
SANITATION DISTRICT NO. 2  
OFFICE ENGINEER

FOR LEGEND  
SEE PLAN NO. S-A-44

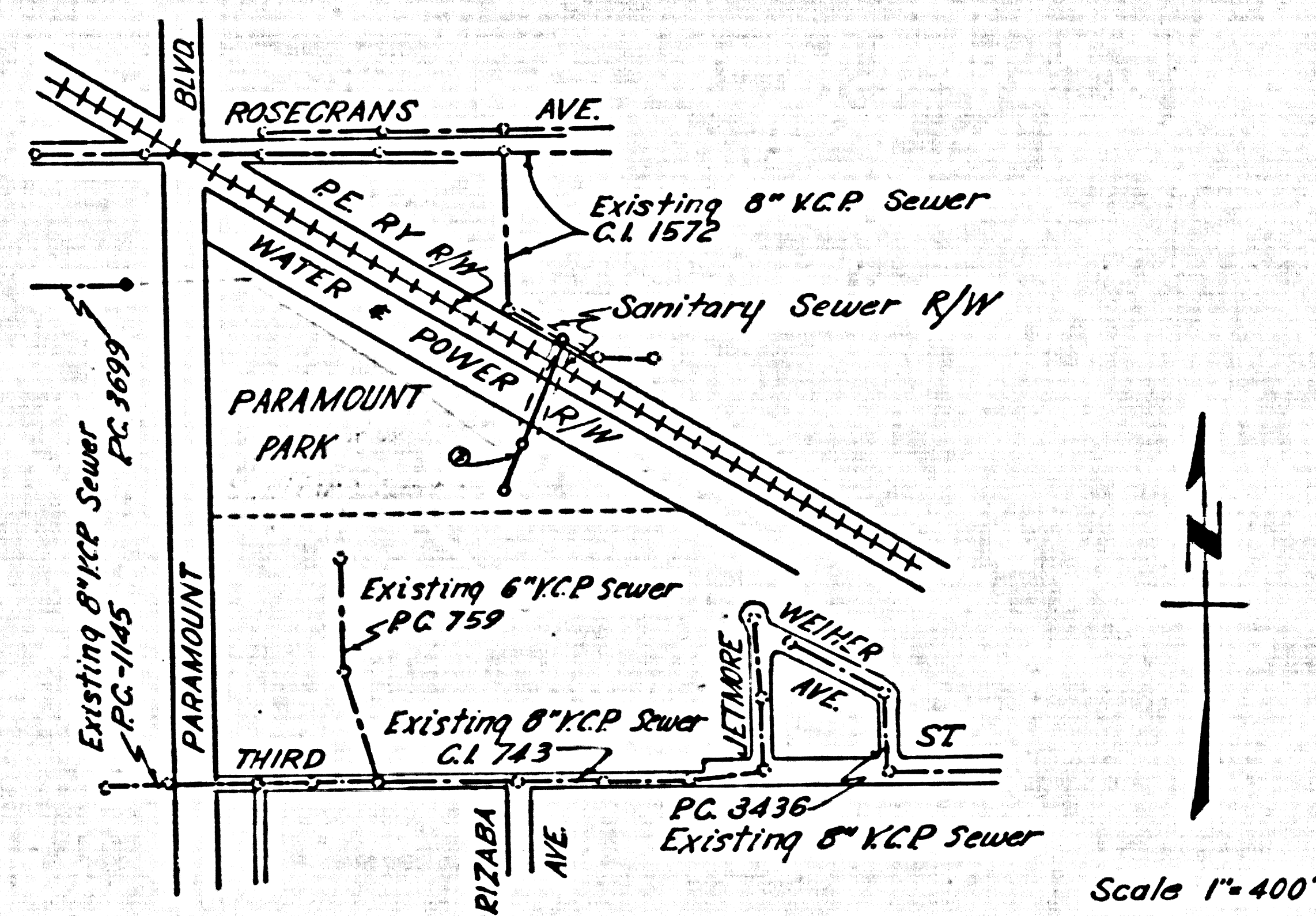
NOTE: GRADES TO WHICH THIS IMPROVEMENT IS TO BE CONSTRUCTED ARE SHOWN ON PLANS AND PROFILES. GRADE POINTS FOR TOP OF CURB, CENTER LINE OF STREET OR CENTER LINE OF ALLEY ARE SHOWN BY CIRCLES ON PROFILES AT ALL POINTS BETWEEN DESIGNATED POINTS. THE GRADE SHALL BE ESTABLISHED SO AS TO CONFORM TO A STRAIGHT LINE DRAWN BETWEEN SAID DESIGNATED POINTS.  
ELEVATIONS ARE IN FEET ABOVE U. S. C. & G. S. SEA LEVEL. DATUM OF 1929.  
UNIT PRICES FOR ADDITIONAL WORK WHICH MAY BE REQUIRED FOR WHICH CANNOT BE ASCERTAINED IN ADVANCE SHALL BE SUBMITTED IN THE PROPOSAL.  
THIS DRAWING AND THE DATA HEREON ARE HEREBY MADE A PART OF THE SPECIFICATIONS.

REFERENCES		
W. S. 32	DESIGNED	W. Y. Ten Oct. 1957
A. B.	TRACED	W. Y. Ten Oct. 1957
F. B. 2160	CHECKED	Kriegel Oct. 1957

- USE STANDARD STRENGTH PIPE EXCEPT AS NOTED.
- USE CEMENT MORTAR FOR ALL VITRIFIED CLAY PIPE JOINTS.
- CONSTRUCT HOUSE LATERALS WITH INVERTS AT CURB OR PROPERTY LINE FEET BELOW CURB GRADE OR GRADE OF CENTER LINE OF STREET EXCEPT AS NOTED.
- CONSTRUCT HOUSE LATERALS WITH 1/4 INCH RISE PER FT. TO PROPERTY LINE EXCEPT AS NOTED.
- ALL STRUCTURES SHALL BE BRICK SEWER STRUCTURES AS PER PLAN NO. S-A-104, EXCEPT AS NOTED.
- USE STANDARD MANHOLE FRAMES AND COVERS AS PER PLAN NO. S-A-117, EXCEPT AS NOTED.
- RESURFACE TRENCH WITHIN PAVED AREA WITH PREMIX ROCK AND OIL 2 INCHES IN THICKNESS.
- THE CONTRACTOR SHALL NOTIFY THE DESIGN DIVISION BY TELEPHONE MADISON 9-4747, EXT 362 AT LEAST 24 HOURS BEFORE STARTING ANY WORK UNDER THIS CONTRACT IS FROM ANY LIMIT.
- USE FORMULA NO. 1 SEC. 51 OF SPECIFICATIONS TO COMPUTE ALLOWABLE LEAKAGE.
- THE CONTRACTOR SHALL OBTAIN ALL NECESSARY PERMITS AT HIS OWN EXPENSE.

SEE P.C. 5765

NO CHARGE FOR CONNECTIONS  
*H. L. ...*



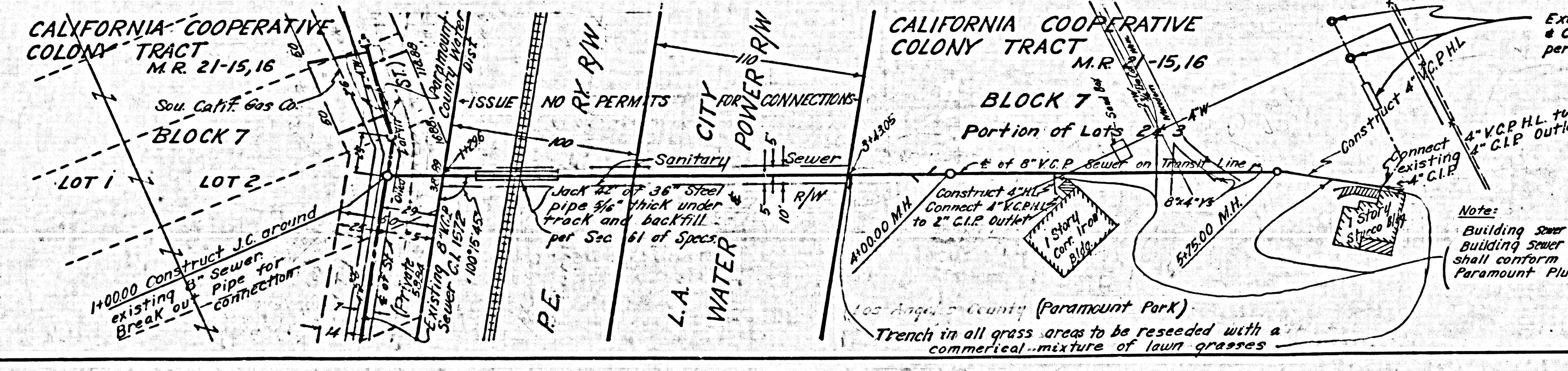
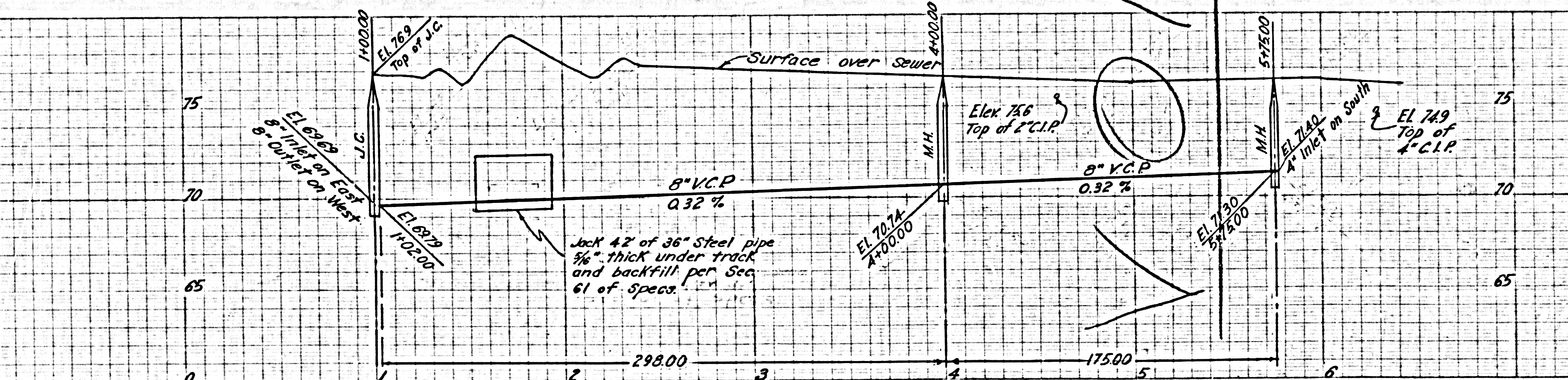
Index Map  
PC 5227 J.M. 0864.17

Scale 1" = 40'

Note:  
Approval of this plan by the City of Paramount does not constitute a representation as to the accuracy of the location of or existence or non-existence of any underground utility pipe, or structure within the limits of this project.

PC No 5227  
PAGE 2

NO CHARGE FOR CONNECTIONS



Note:  
Building Sewer Permit Required  
Building sewer construction shall conform with City of Paramount Plumbing Code

Trim Line

U.G. CHK'D  
B.M.'S CHK'D