

PUENTE BLDG. DIST. NO. 2

PROFILE ALIGNMENT AND GRADE OF P.C. 5233
 SANITARY SEWERS PAGE 1
 TO BE CONSTRUCTED IN J.N. 0351.38

TRACT No 25158

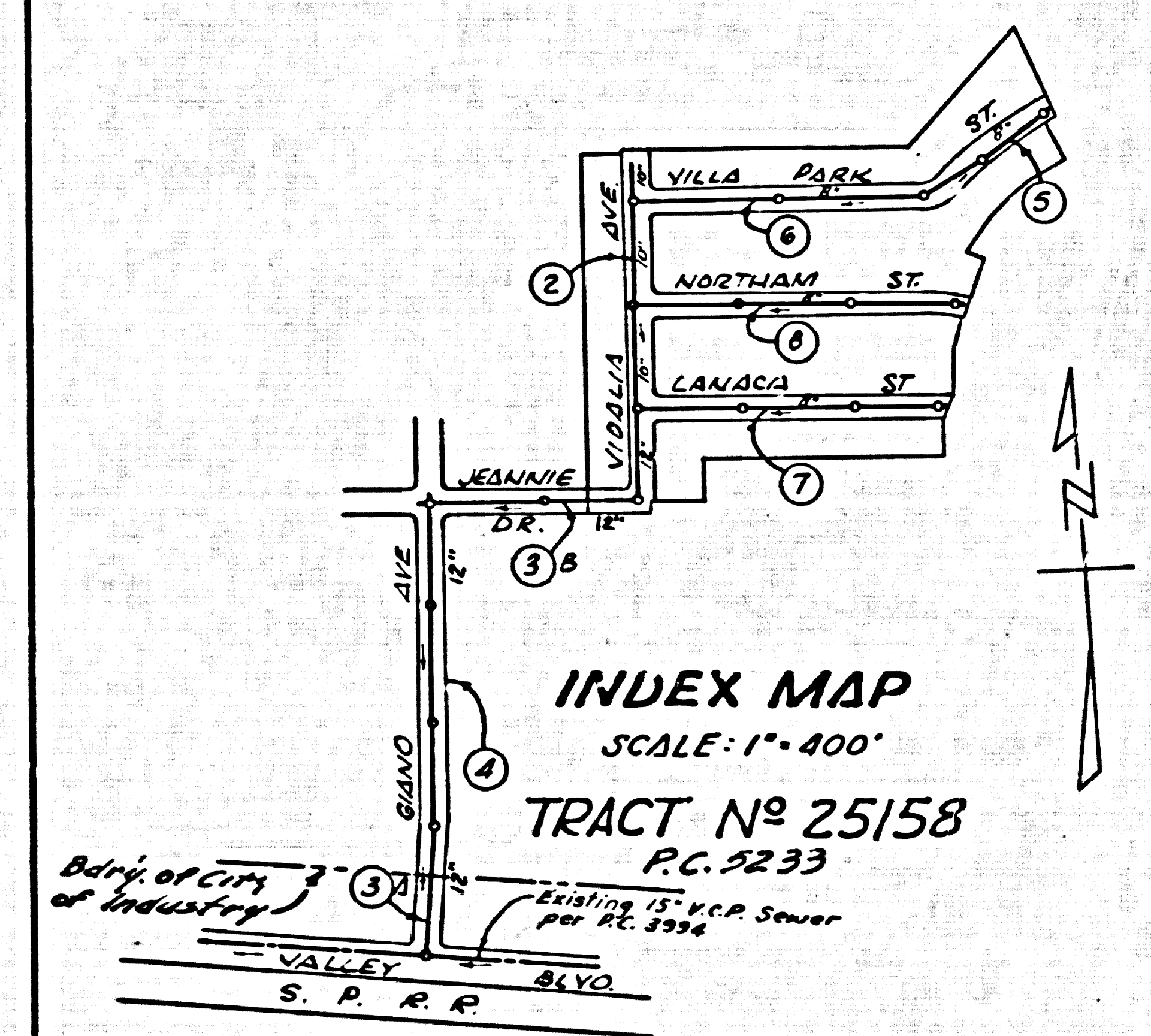
PRIVATE CONTRACT NO. 5233

W.S. 38
 4 SHEETS 8 PAGES
 SCALE: HORIZ. 1" = 40' VERT. 1" = 4'
 SEPTEMBER, 1957

ROSENTHAL ENGINEERING COMPANY

FOR LEGEND SEE PLAN NO. S-A-54

- NOTES:
1. 1/4" DIA STAKES ON THE PROPERTY LINE OR PROPERTY LINES PRODUCED AT RIGHT ANGLES TO THE SEWER LINE AT THE CENTER LINE OF EACH BRANCH.
 2. NO REPRESENTATIVE OF THE COUNTY ENGINEER WILL SURVEY OR LAY OUT ANY PORTION OF THE WORK.
 3. THE OWNER OR HIS AUTHORIZED REPRESENTATIVE SHALL FURNISH THE COUNTY ENGINEER WITH GRADE SHEETS AND STATIONING FOR ALL HOUSE LATERALS AND Y BRANCHES AND SHALL PROVIDE STAKES FOR THEM AT THEIR PROPER LOCATIONS WITH STATIONING PLAINLY MARKED. ANY CHANGE IN LOCATION SHALL BE REQUESTED IN WRITING BY THE OWNER OR HIS REPRESENTATIVE.
 4. THE PRIVATE ENGINEER SHALL FURNISH THE HOUSE LATERAL DEPTH AT THE PROPERTY LINE BELOW THE TOP OF CURB ELEVATION FOR EACH HOUSE LATERAL ON THE GRADE SHEET.
 5. NO REVISIONS SHALL BE MADE IN THESE PLANS WITHOUT THE APPROVAL OF THE COUNTY ENGINEER.
 6. USE STANDARD MANHOLE FRAMES AND COVERS, S-117.
 7. USE STANDARD STRENGTH PIPE.
 8. USE CEMENT MORTAR OR "WEDGE-LOCK" OR "SPREAD-SEAL" FOR ALL V.C.P. JOINTS PER S.P.C.S., SECS. 34 & 41.
 9. RESURFACE ALL TRENCH WITHIN PAVED AREA TO MEET L.A. COUNTY ROAD DEPT. OR CALIF. STATE HIGHWAY REQUIREMENTS IN ACCORDANCE WITH PERMITS.
 10. INCREASE FOUR FEET OF SEWER AT POINTS OF INTERFERENCE WITH POLES, CASE III, S-172.
 11. HOUSE LATERALS TO BE CONSTRUCTED WITH INVERTS AT PROPERTY LINE 6 FEET BELOW CURB GRADE EXCEPT AS NOTED.
 12. ALL STRUCTURES SHALL BE BRICK SEWER STRUCTURES, S-104, EXCEPT AS NOTED.
 13. FOR ALLOWABLE LEAKAGE TEST USE FORMULA NO. 1, S.P.C.S., SEC. 54.
 14. MANHOLE TOPS IN UNIMPROVED RIGHTS-OF-WAY TO BE SIX INCHES ABOVE FINISHED GRADE.
 15. THE CONTRACTOR SHALL NOTIFY THE CONSTRUCTION & STORM DRAIN DIVISION BY TELEPHONE, MADISON 9-800, EXT. 348, AT LEAST FORTY-FOUR HOURS BEFORE STARTING ANY WORK UNDER THIS CONTRACT.
 16. STANDARD SPECIFICATIONS DATED MAY 15, 1959 APPLY IN THE CONSTRUCTION OF THIS PROJECT.

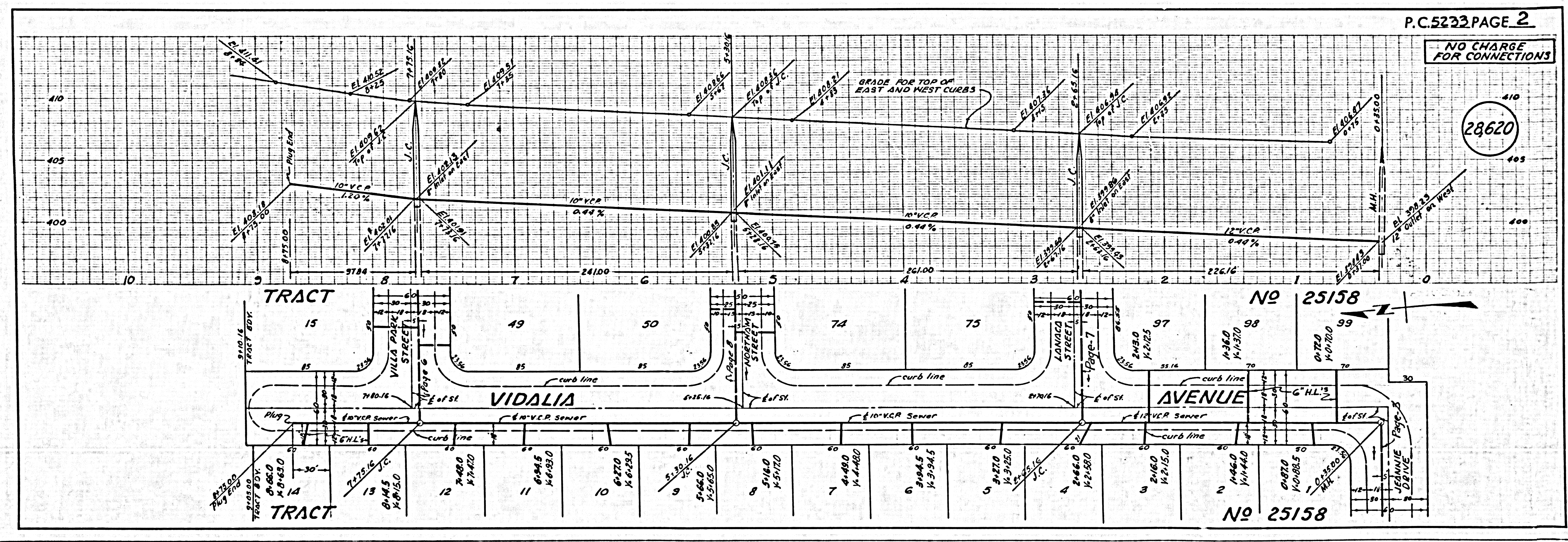


BENCH MARK
 Monument in H.H. marked "R.N. 11-03-1952
 P.E. 63" 125' N. of E. of Valley Blvd. & of N.
 W. corner of Valley Blvd. & W. Side Food.
 F.B. 1376, Fy. 22, 1952 Adj.
 ELEV. 418.903

... NOTE ...
 REVISED SEWER MAIN SIZE FROM 10" TO 12" ON GIANO AVENUE, JEANNIE DRIVE AND VIDALIA AVENUE SOUTH OF LANACA ST. ELIMINATE M.H. @ STA. 8+75 ON VIDALIA AVE.
 APPROVED: *S.E. Wade*
 DATE: 11-24-59

COLLECT CHARGES AS INDICATED
S.E. Wade 11-24-59

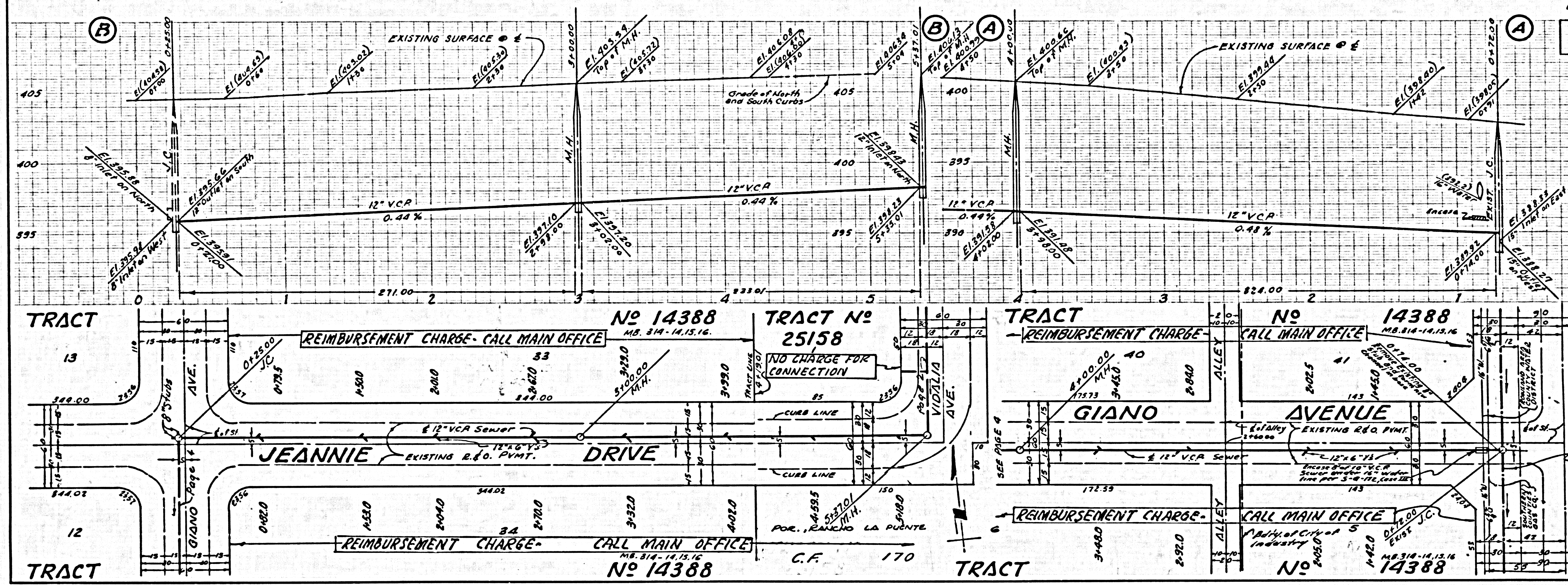
NOTE:
 GRADES TO WHICH THIS IMPROVEMENT IS TO BE CONSTRUCTED ARE SHOWN ON PLANS AND PROFILE. GRADE POINTS AND TOP OF CURBS, CENTER LINE OF STREETS, OR CENTER LINE OF ALLEYS ARE SHOWN BY CIRCLES ON PROFILES. AT ALL POINTS BETWEEN DESIGNATED POINTS THE GRADE SHALL BE ESTABLISHED SO AS TO CONFORM TO A STRAIGHT LINE DRAWN BETWEEN SAID DESIGNATED POINTS.
 ELEVATIONS ARE IN FEET ABOVE U.S.C. & G.S. SEA LEVEL DATUM OF 1929.
 THE DRAWING AND THE DATA HEREON ARE HEREBY MADE A PART OF THE SPECIFICATIONS.
 WORK SHALL BE CONSTRUCTED ACCORDING TO SPECIFICATIONS ON FILE IN THE OFFICE OF THE COUNTY ENGINEER AND SHALL BE PROSECUTED ONLY IN THE PRESENCE OF THE COUNTY ENGINEER.
 BEFORE WORK CAN BE STARTED, THE CONTRACTOR MUST OBTAIN A PERMIT TO EXCAVATE IN COUNTY STREETS FROM THE L.A. COUNTY ROAD DEPT., DISTRICT OFFICE NO. 2, AND MAKE A DEPOSIT WITH THE COUNTY ENGINEER, ROOM 324 PAN AMERICAN BUILDING, 233 SO. SPRING STREET TO COVER THE COST OF CONSTRUCTION INSPECTION AND RECORD PLANS.
 APPROVAL OF THIS PLAN BY THE COUNTY OF LOS ANGELES DOES NOT CONSTITUTE A REPRESENTATION AS TO THE ACCURACY OF THE LOCATION OR THE EXISTENCE OR NON-EXISTENCE OF ANY UNDERGROUND UTILITY PIPE, OR STRUCTURE WITHIN THE LIMITS OF THIS PROJECT. THIS NOTE APPLIES TO ALL PAGES.
 IF WORK IS TO BE DONE IN A STATE HIGHWAY, A PERMIT MUST BE OBTAINED FROM THE STATE OF CALIFORNIA, DIVISION OF HIGHWAYS, 130 SOUTH SPRING STREET.
 COUNTY OF LOS ANGELES, CALIFORNIA
 APPROVED, JOHN A. LAMBE, COUNTY ENGINEER
 APPROVED, C.R. DAWSON, CHIEF ENGINEER
 BY *S.E. Wade* 11-24-59
 2815 TARRANT SANITATION ENGINEER
 CHECKED BY *S.E. Wade* 10-5-59
 OFFICE OF COUNTY ENGINEER, BLDG. C. E. NO. 94104



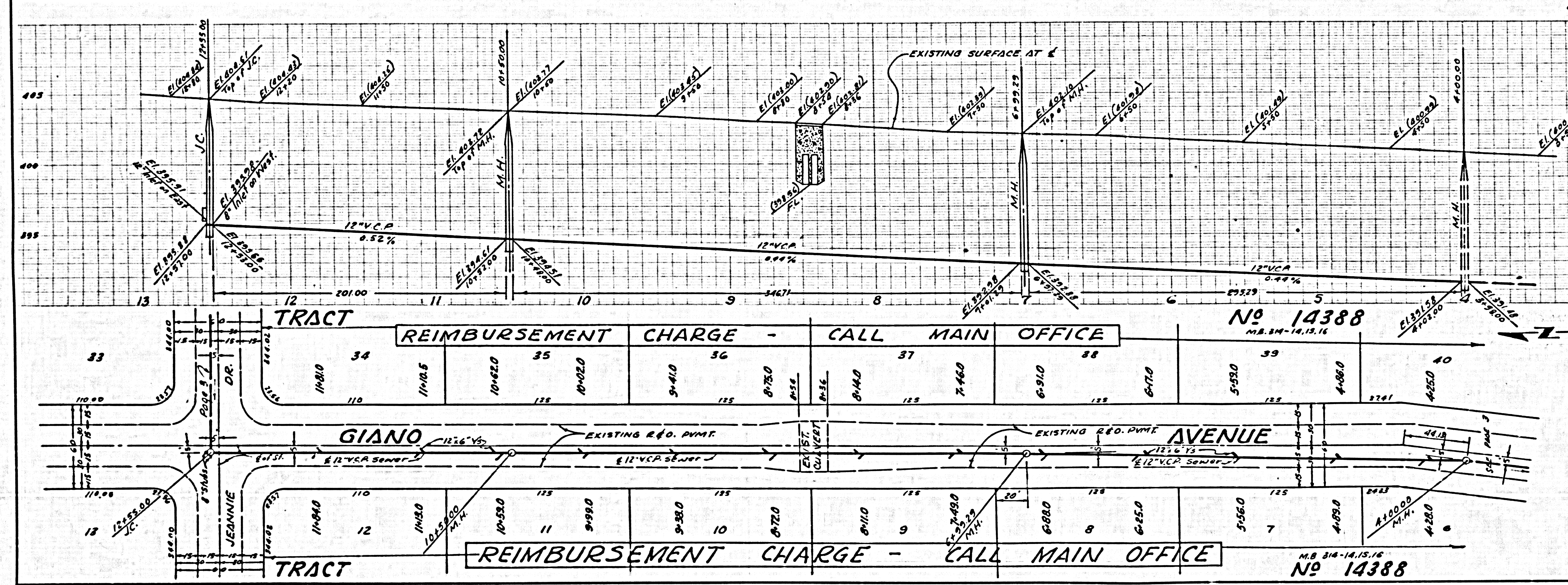
P.C. 5233 PAGE 2

NO CHARGE FOR CONNECTIONS

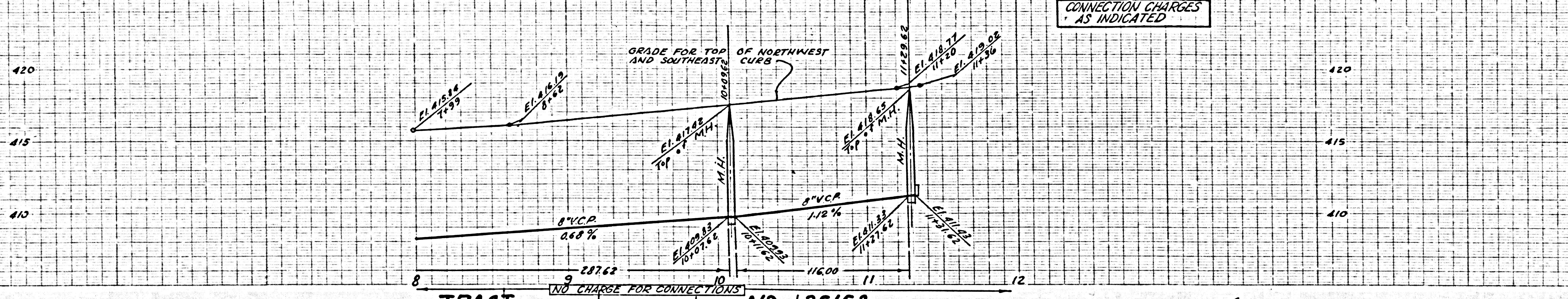
28620



28,621

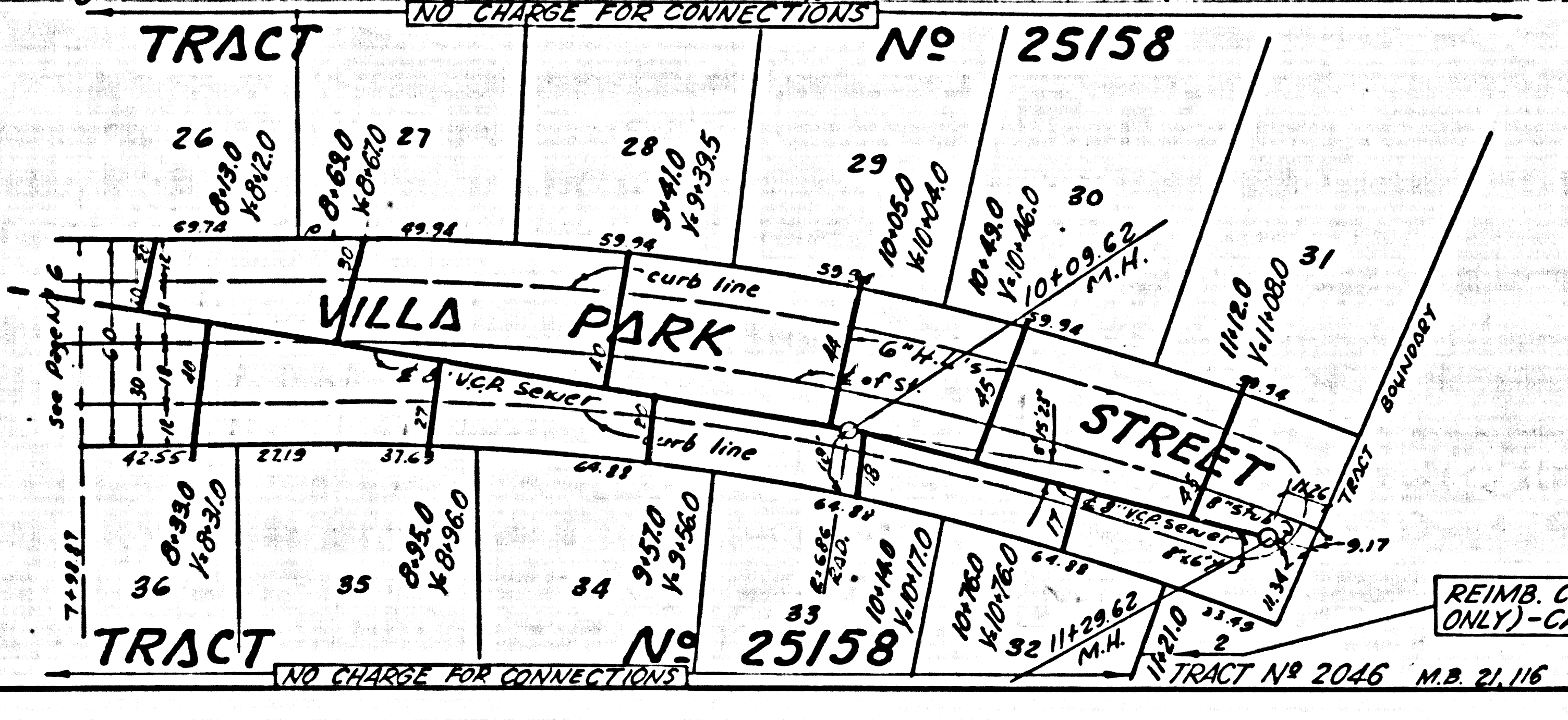


28,622

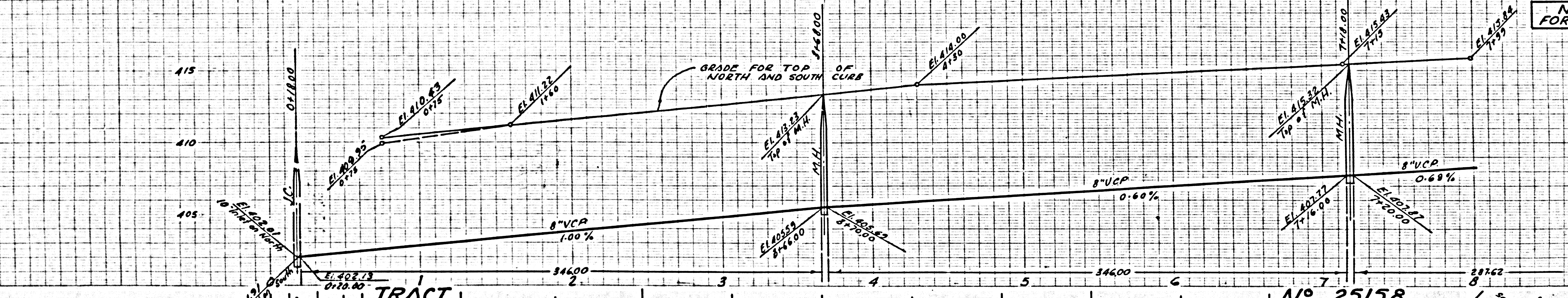


CONNECTION CHARGES AS INDICATED

28,623

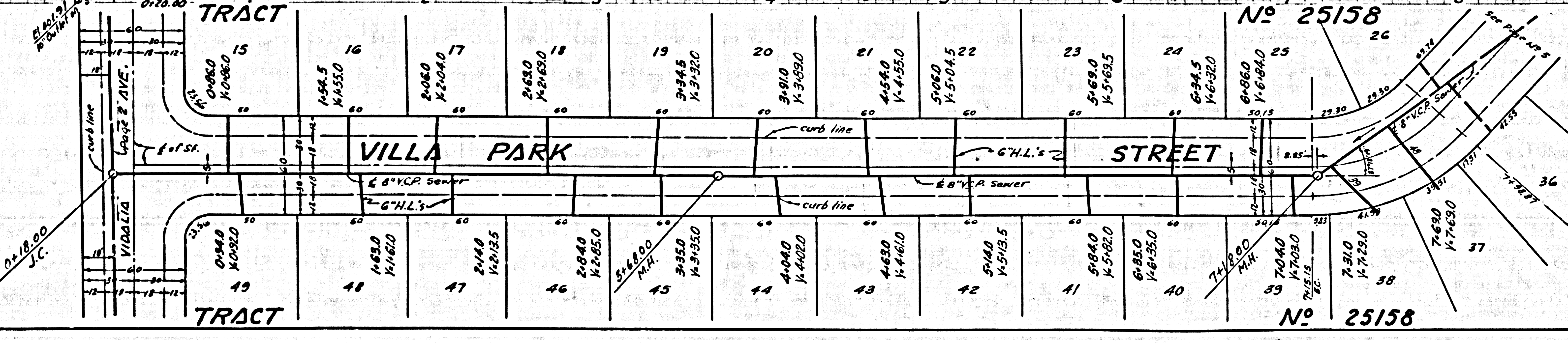


REIMB. CHARGE (ACREAGE ONLY) - CALL CENTRAL OFFICE

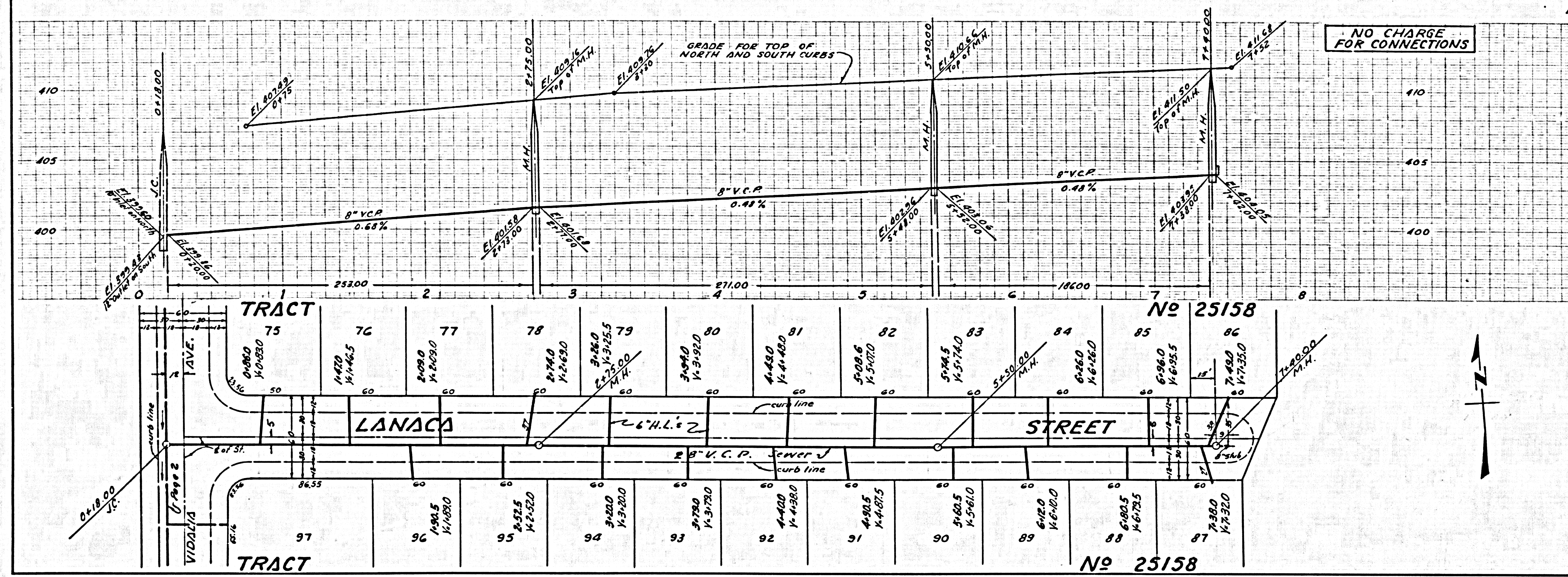


NO CHARGE FOR CONNECTIONS

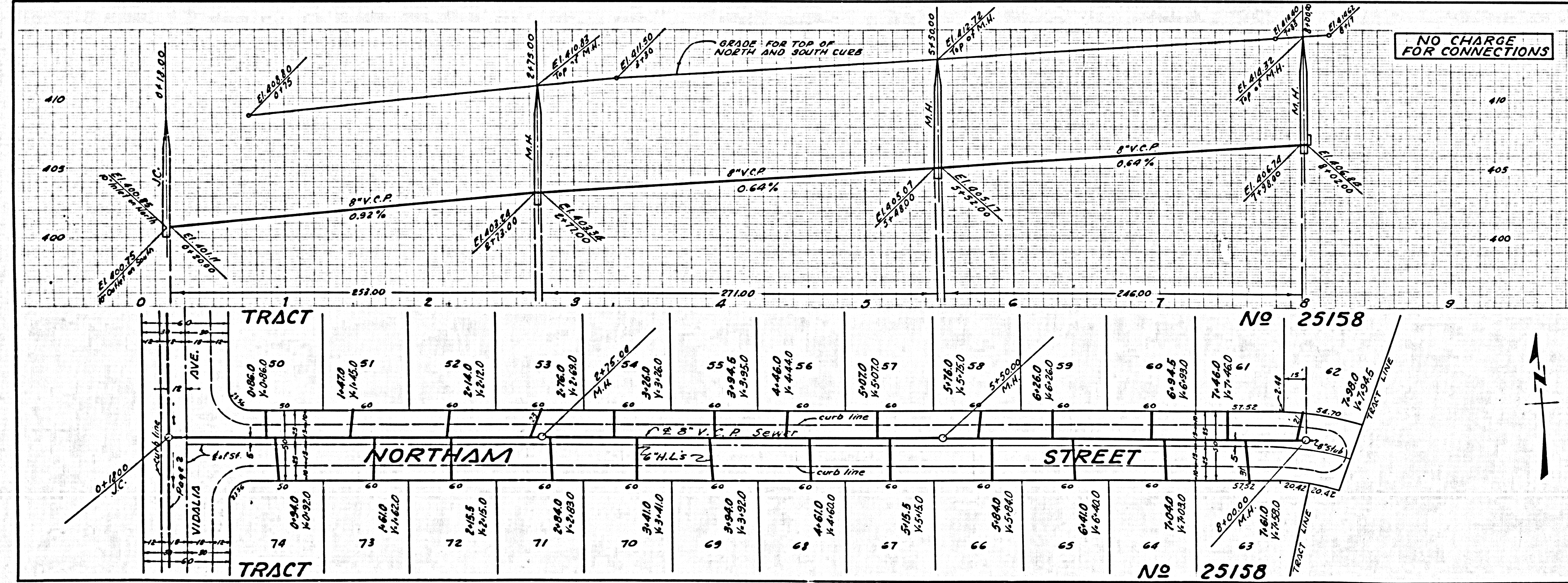
28,624



NO CHARGE FOR CONNECTIONS



28,625



28,626