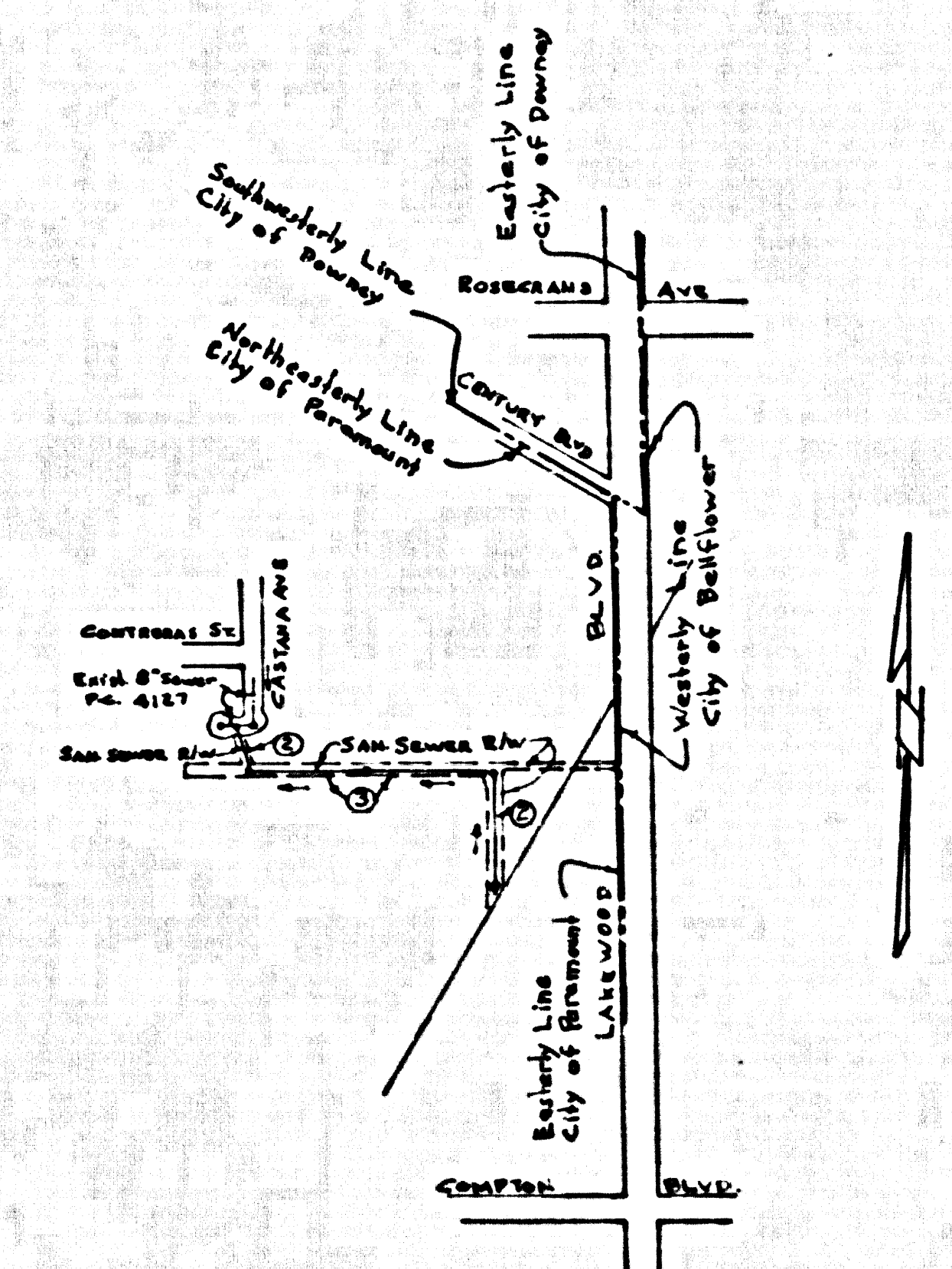


B.M. 57 2086 Elev. 86.113 (1955)
 Reinforcing steel rod in S.W. Cor. of cone
 apron to Lakewood Mkd. #14610 Lakewood
 Blvd. at N.E. cor. Lakewood Blvd. & Jeffrey St.
 Blvd. at N.E. cor. Lakewood Blvd. & Jeffrey St.
 (Norwalk Quad)



PARAMOUNT BLDG. DIST. NO. 4.04

PROFILE ALIGNMENT AND GRADE OF P.C. 5234
 SANITARY SEWERS PAGE 1

TO BE CONSTRUCTED IN
 R/W WEST OF
 LAKEWOOD BLVD.
 PRIVATE CONTRACT NO. 5234

W.S. 32
 2 SHEETS, 3 PAGES
 (28,667)

SCALE: VERT. 1"=4' HORIZ. 1"=40' JULY, 1959

PREPARED IN THE OFFICES OF
 OLSON SURVEYING SERVICE

By: Constance Olson
 REG. C. E. NO. 72820

FOR LEGEND SEE PLAN NO. S-A-64

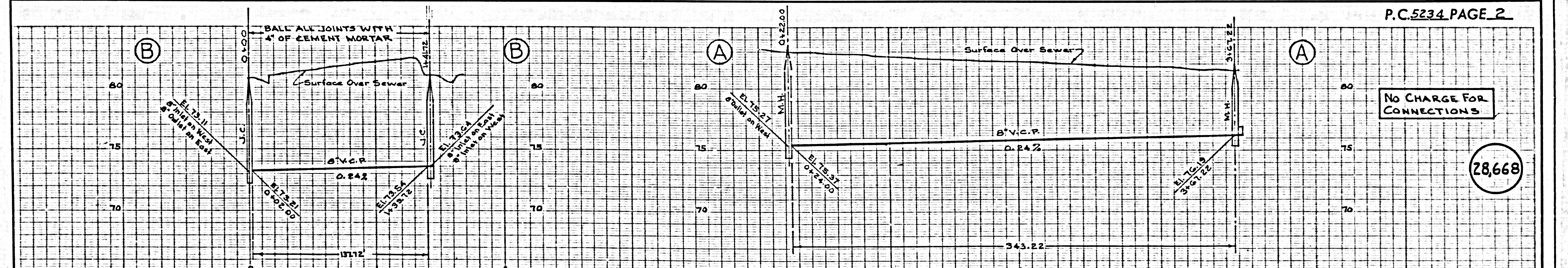
- NOTES:
1. PROVIDE STAKES ON THE PROPERTY LINE OR PROPERTY LINES PRODUCED AT RIGHT ANGLES TO THE SEWER LINE AT THE CENTER LINE OF EACH MANHOLE.
 2. NO REPRESENTATIVE OF THE CITY ENGINEER WILL SURVEY OR LAY OUT ANY PORTION OF THE WORK.
 3. THE OWNER OR HIS AUTHORIZED REPRESENTATIVE SHALL FURNISH THE COUNTY ENGINEER WITH GRADE SHEETS AND STATIONING FOR ALL HOUSE LATERALS AND Y BRANCHES AND SHALL PROVIDE STAKES FOR THEM AT THEIR PROPER LOCATIONS WITH STATIONING PLAINLY MARKED. ANY CHANGE IN LOCATION SHALL BE REQUESTED IN WRITING BY THE OWNER OR HIS REPRESENTATIVE.
 4. THE PRIVATE ENGINEER SHALL REVISION THE HOUSE LATERAL DEPTH AT THE PROPERTY LINE BELOW THE TOP OF CURB ELEVATION FOR EACH HOUSE LATERAL ON THE GRADE SHEET.
 5. NO REVISIONS SHALL BE MADE IN THESE PLANS WITHOUT THE APPROVAL OF THE CITY ENGINEER.
 6. USE STANDARD MANHOLE FRAMES AND COVERS, S-117.
 7. USE STANDARD STRENGTH PIPE S-117.
 8. USE CEMENT MORTAR OR "WEDGE-LOCK" OR "SPEED-SEAL" FOR ALL V.C.P. JOINTS PER SPECS., SECS. 36 & 40.
 9. RESURFACE ALL TRENCH WITHIN PAVED AREA TO MEET L.A. COUNTY ROAD DEPT. OR CALIF. STATE HIGHWAY REQUIREMENTS IN ACCORDANCE WITH PERMITS.
 10. ENCASE FOUR FEET OF SEWER AT POINTS OF INTERFERENCE WITH POLES, CASE NO. S-1172.
 11. ENCASE SEWERAGE TO BE CONSTRUCTED WITHIN EXISTING UTILITY TRENCHES WITH FOUR FEET OF COVER UNLESS OTHERWISE SPECIFIED.
 12. ALL STRUCTURES SHALL BE BRICK SEWER STRUCTURES, S-104.
 13. FOR ALLOWABLE LEAKAGE TEST USE FORMULA NO. 1, SPECS., SEC. 34.
 14. MANHOLE TOPS IN UNIMPROVED RIGHTS-OF-WAY TO BE SIX INCHES ABOVE FINISHED GRADE.
 15. THE CONTRACTOR SHALL NOTIFY THE CONSTRUCTION & STORM DRAIN DIVISION BY TELEPHONE, MADISON 9-4747, EXT. 362, AT LEAST TWENTY-FOUR HOURS BEFORE STARTING ANY WORK UNDER THIS CONTRACT.

NOTES:
 GRADES TO WHICH THIS IMPROVEMENT IS TO BE CONSTRUCTED ARE SHOWN ON PLANS AND PROFILE. GRADE POINTS FOR TOP OF CURBS, CENTER LINE OF STREETS, OR CENTER LINE OF ALLEYS ARE SHOWN BY CIRCLES ON PROFILES AT ALL POINTS BETWEEN DESIGNATED POINTS THE GRADE SHALL BE ESTABLISHED SO AS TO CONFORM TO A STRAIGHT LINE BETWEEN SAID DESIGNATED POINTS.
 ELEVATIONS ARE IN FEET ABOVE U.S.C. & G.S. SEA LEVEL DATUM OF 1929.
 THIS DRAWING AND THE DATA HEREON ARE HEREBY MADE A PART OF THE SPECIFICATIONS.
 WORK SHALL BE CONSTRUCTED ACCORDING TO SPECIFICATIONS ON FILE IN THE OFFICE OF THE CITY ENGINEER AND SHALL BE PROSECUTED ONLY IN THE PRESENCE OF THE COUNTY ENGINEER.
 BEFORE WORK CAN BE STARTED, THE CONTRACTOR MUST OBTAIN A PERMIT TO EXCAVATE IN CITY STREETS FROM THE L.A. COUNTY ROAD DEPT., DISTRICT OFFICE NO. 10, AND MAKE A DEPOSIT WITH THE CITY OF PARAMOUNT.
 APPROVAL OF THIS PLAN BY THE CITY OF PARAMOUNT DOES NOT CONSTITUTE A REPRESENTATION AS TO THE ACCURACY OF THE LOCATION OF OR THE EXISTENCE OR NON-EXISTENCE OF ANY UNDERGROUND UTILITY PIPES, OR STRUCTURE WITHIN THE LIMITS OF THIS PROJECT. THIS NOTE APPLIES TO ALL PAGES.
 IF WORK IS TO BE DONE IN A STATE HIGHWAY, A PERMIT MUST BE OBTAINED FROM THE STATE OF CALIFORNIA, DIVISION OF HIGHWAYS, 130 SOUTH SPRING STREET.

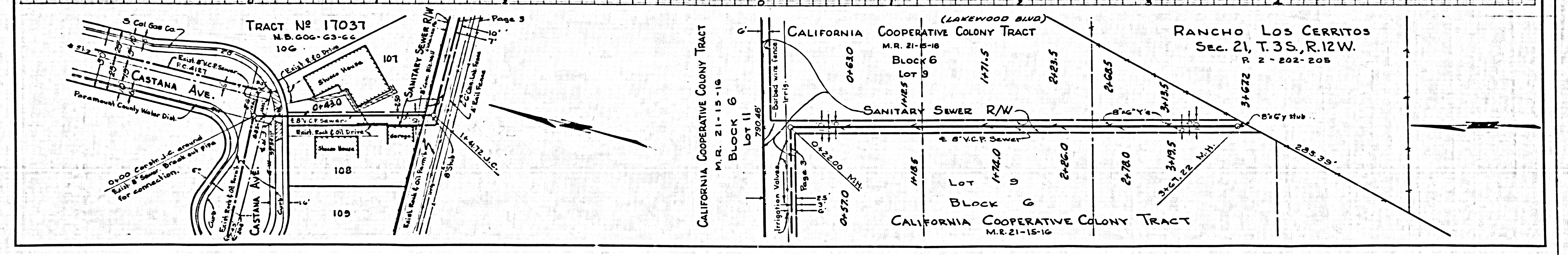
CITY OF PARAMOUNT, CALIFORNIA

APPROVED, JOHN A. LAMME, CITY ENGINEER
 APPROVED, C.E. CAMPBELL, CHIEF ENGINEER
 BY: E.E. Dwyer ASST. SANITATION ENGINEER
 BY: J.M. ... OFFICE ENGINEER
 CHECKED BY: W.C. ... OFFICE OF CITY ENGINEER, REG. C. E. NO. 8406
 Submitted By: John L. ... Regional Engineer, Reg. C.E. No. 3811

NO CHARGE FOR CONNECTIONS
Richard E. ...



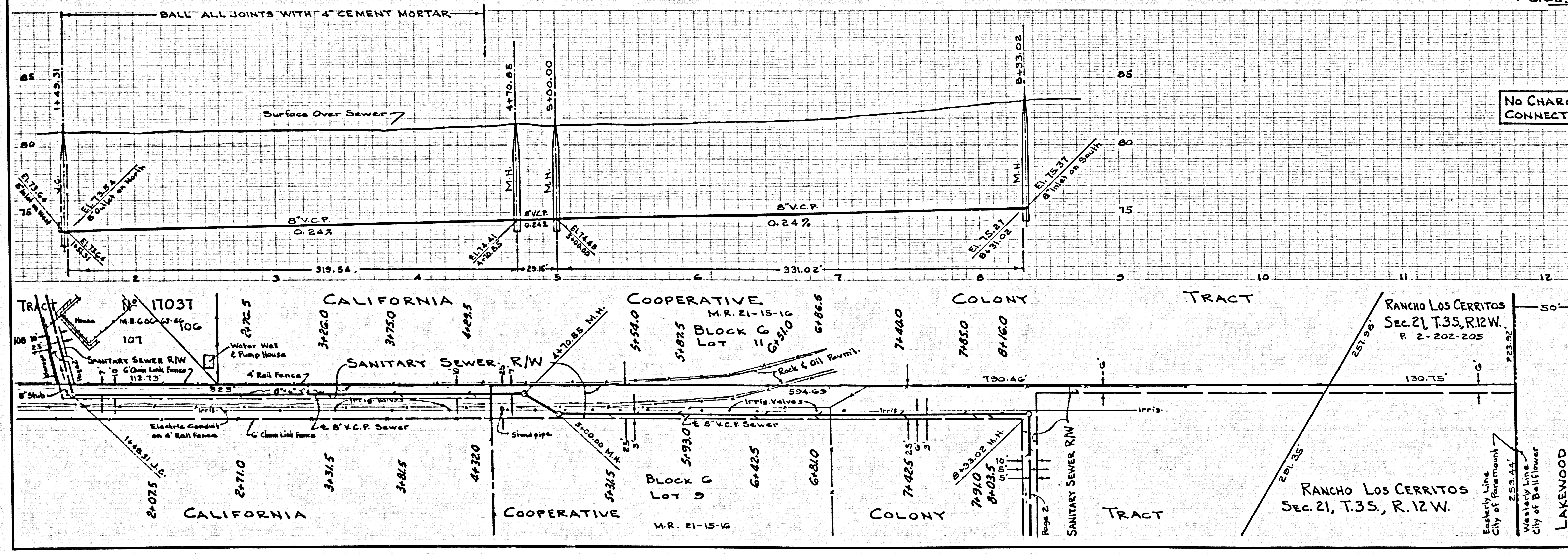
NO CHARGE FOR CONNECTIONS
 (28,668)



TRACT NO. 17037 M.B. 606-G3-GC 106
 CASTANA AVE.
 CALIFORNIA COOPERATIVE COLONY TRACT M.R. 21-15-16 BLOCK 6 LOT 9
 RANCHO LOS CERRITOS Sec. 21, T. 3S., R. 12W. R. 2-202-205

No CHARGE FOR CONNECTIONS

28,669



D 15334 - 6' IN. WEST OF FARMWOOD - PLAD