

SAN DIMAS BLDG. DIST. NO. 10

JN 0351.42
 PROFILE ALIGNMENT AND GRADE OF P.C. 5240
SANITARY SEWERS PAGE 1

TO BE CONSTRUCTED IN
PUEENTE AVENUE
TRACT No 25257
PRIVATE CONTRACT NO. 5240

W.S. 47
 2 SHEETS, 3 PAGES

SCALE: VERT. 1"=4' HORIZ. 1"=40' JULY, 1959

PREPARED IN THE OFFICES OF
L. FREDERICK PACK

BY *L. Frederick Pack*
 REG. C. E. NO. 1448

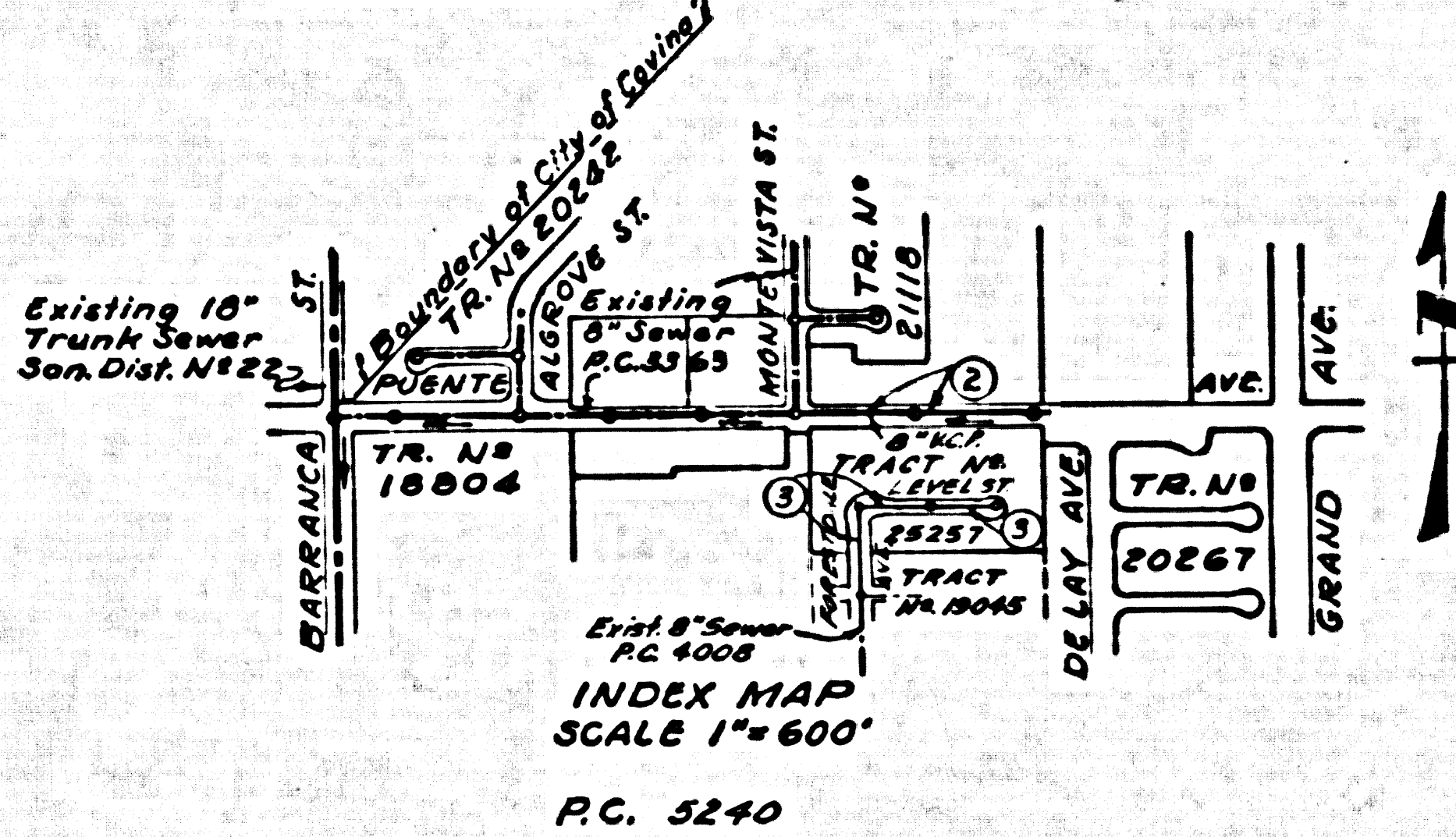
FOR LEGEND SEE PLAN NO. S-A-64

29,093

B.M. Std. County Mon. El. 592.863
 @ Inter. Puente Ave. & Grand Ave.
 Set in concrete 18" below the
 surface. FB 1951-116

CONNECTION CHARGES
 AS INDICATED
 77.77¢ per foot 2-23-60

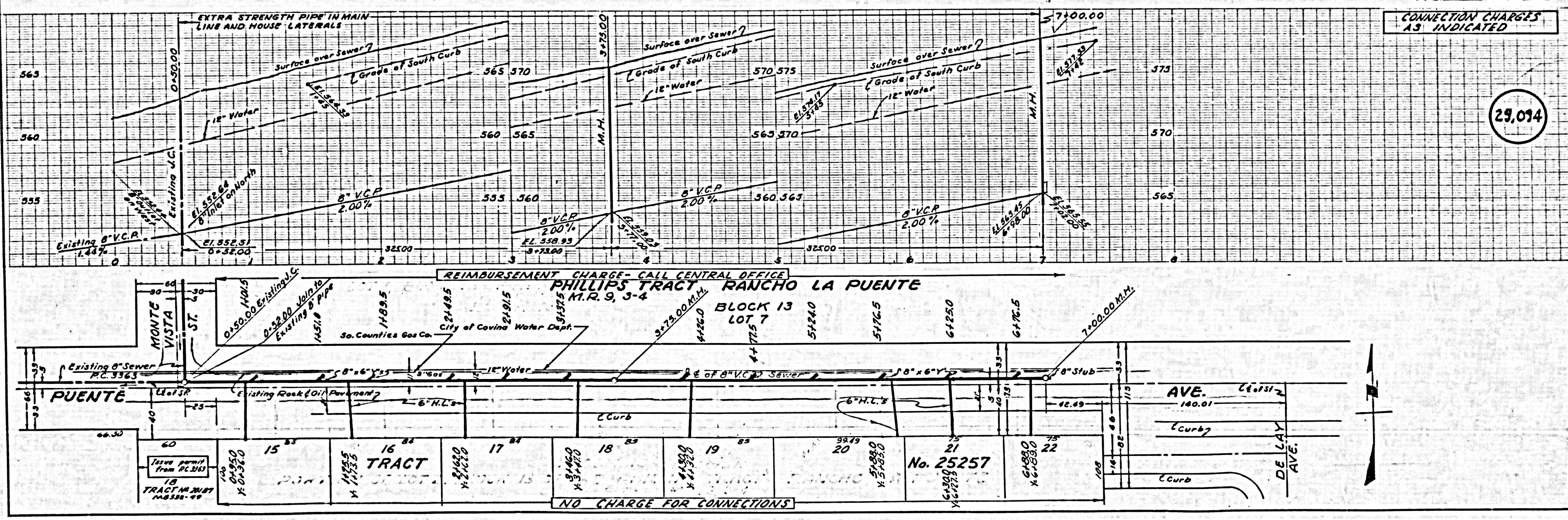
- NOTES:
1. PROVIDE STAKES ON THE PROPERTY LINE OR PROPERTY LINES PRODUCED AT RIGHT ANGLES TO THE SEWER LINE AT THE CENTER LINE OF EACH MANHOLE.
 2. NO REPRESENTATIVE OF THE COUNTY ENGINEER WILL SURVEY OR LAY OUT ANY PORTION OF THE WORK.
 3. THE OWNER OR HIS AUTHORIZED REPRESENTATIVE SHALL FURNISH THE COUNTY ENGINEER WITH GRADE SHEETS AND STATIONING FOR ALL HOUSE LATERALS AND BRANCHES AND SHALL PROVIDE STAKES FOR THEM AT THEIR PROPER LOCATIONS WITH STATIONING PLAINLY MARKED. ANY CHANGE IN LOCATION SHALL BE REQUESTED IN WRITING BY THE OWNER OR HIS REPRESENTATIVE.
 4. THE PRIVATE ENGINEER SHALL FURNISH THE HOUSE LATERAL DEPTH AT THE PROPERTY LINE BELOW THE TOP OF CURB ELEVATION FOR EACH HOUSE LATERAL ON THE GRADE SHEET.
 5. NO REVISIONS SHALL BE MADE IN THESE PLANS WITHOUT THE APPROVAL OF THE COUNTY ENGINEER.
 6. USE STANDARD MANHOLE FRAMES AND COVERS.
 7. USE CEMENT MORTAR OR "WEDGE-LOCK" OR "SPEED-SEAL" FOR ALL V.C.P. JOINTS PER SPEC. S, SECS. 36 & 40.
 8. RESURFACE ALL TRENCH WITHIN PAVED AREA TO MEET L.A. COUNTY ROAD DEPT. OR CALIF. STATE HIGHWAY REQUIREMENTS IN ACCORDANCE WITH PERMITS.
 9. ENCASE FOUR FEET OF SEWER AT POINTS OF INTERFERENCE WITH POLES, CASE IN, S-372.
 10. HOUSE LATERALS TO BE CONSTRUCTED WITH INVERTS AT PROPERTY LINE 6" FEET BELOW CURB GRADE.
 11. ALL STRUCTURES SHALL BE BRICK SEWER STRUCTURES, S-184.
 12. FOR ALLOWABLE LEAKAGE TEST USE FORMULA NO. 1, SPEC. S, SEC. 34.
 13. MANHOLE TOPS IN UNIMPROVED RIGHTS-OF-WAY TO BE SIX INCHES ABOVE FINISHED GRADE.
 14. THE CONTRACTOR SHALL NOTIFY THE CONSTRUCTION & BROWN BEAM DIVISION BY TELEPHONE, MADISON 9-60, EXT. 342, AT LEAST TWENTY-FOUR HOURS BEFORE STARTING ANY WORK UNDER THIS CONTRACT.
 15. STANDARD SPECIFICATIONS DATED JANUARY 1, 1959 APPLY IN THE CONSTRUCTION OF THIS PROJECT.



NOTE:
 GRADES TO WHICH THIS IMPROVEMENT IS TO BE CONSTRUCTED ARE SHOWN ON PLANS AND PROFILES. GRADE POINTS FOR TOP OF CURBS, CENTER LINE OF STREETS, OR CENTER LINE OF ALLEYS ARE SHOWN BY CIRCLES ON PROFILES. AT ALL POINTS BETWEEN DESIGNATED POINTS THE GRADE SHALL BE ESTABLISHED SO AS TO CONFORM TO A STRAIGHT LINE DRAWN BETWEEN SAID DESIGNATED POINTS.
 ELEVATIONS ARE IN FEET ABOVE U.S.C. & G.S. 29A LEVEL DATUM OF 1929.
 THIS DRAWING AND THE DATA HEREON ARE HEREBY MADE A PART OF THE SPECIFICATIONS.
 WORK SHALL BE CONSTRUCTED ACCORDING TO SPECIFICATIONS ON FILE IN THE OFFICE OF THE COUNTY ENGINEER AND SHALL BE PROSECUTED ONLY IN THE PRESENCE OF THE COUNTY ENGINEER.
 BEFORE WORK CAN BE STARTED, THE CONTRACTOR MUST OBTAIN A PERMIT TO EXCAVATE IN COUNTY STREETS FROM THE L.A. COUNTY ROAD DEPT., DISTRICT OFFICE NO. 7 AND PAY A FEE TO THE COUNTY ENGINEER FROM SAN FRANCISCO BEARING 25¢ PER BROADWAY SURVEY TO COVER THE COST OF CONSTRUCTION INSPECTION AND SECOND PLANS.
 APPROVAL OF THIS PLAN BY THE COUNTY OF LOS ANGELES DOES NOT CONSTITUTE A REPRESENTATION AS TO THE ACCURACY OF THE LOCATION OF OR THE EXISTENCE OR NON-EXISTENCE OF ANY UNDERGROUND UTILITY PIPES OR STRUCTURES WITHIN THE LIMITS OF THIS PROJECT. THIS NOTE APPLIES TO ALL PAGES.
 IF WORK IS TO BE DONE IN A STATE HIGHWAY, A PERMIT SHALL BE OBTAINED FROM THE STATE OF CALIFORNIA, DIVISION OF HIGHWAYS, 128 SOUTH SPRING STREET.
COUNTY OF LOS ANGELES, CALIFORNIA
 APPROVED, JOHN A. LAMBE, COUNTY ENGINEER
 APPROVED, C.E. BUCKLEY, CHIEF ENGINEER
 BY *C.E. Buckley* 8137, SANITATION ENGINEER
 CHECKED BY *C.E. Buckley* 8137, SANITATION ENGINEER
 OFFICE OF COUNTY ENGINEER, 800 C. E. NO. 9416

SUBMITTED *W.C. Paindl*
 SAN DIMAS REGIONAL ENGINEER

P.C. 5240 PAGE 2



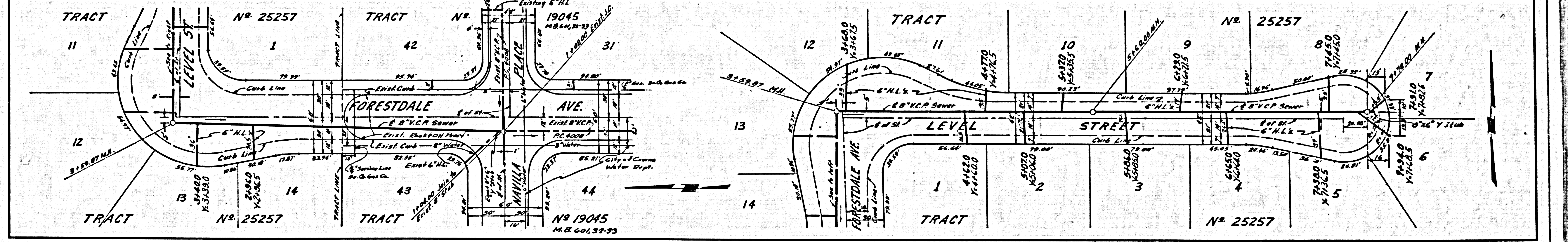
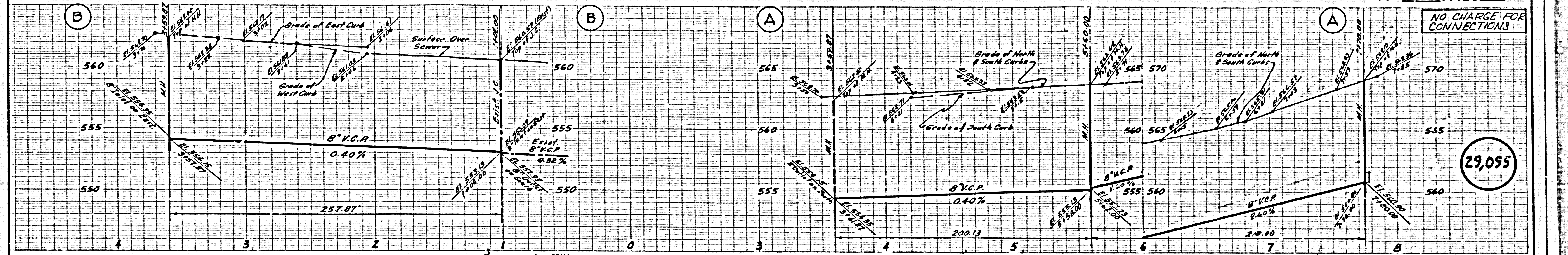
CONNECTION CHARGES
 AS INDICATED

29,094

REIMBURSEMENT CHARGE - CALL CENTRAL OFFICE
 PHILLIPS TRACT RANCHO LA PUENTE
 M.R. 9, 3-4

NO CHARGE FOR CONNECTIONS

NO CHARGE FOR CONNECTIONS



U.S. GEOLOGICAL SURVEY, WASHINGTON, D.C.