

NORWALK BLDG. DIST. NO. 406

PROFILE ALIGNMENT AND GRADE OF **P.C. 5244**
SANITARY SEWERS PAGE 1

TO BE CONSTRUCTED IN
TRACT NO. 24694

PRIVATE CONTRACT NO. 5244

W.S. 33

4 SHEETS; 7 PAGES
SCALE: VERT. 1"=4'
HORIZ. 1"=40'

29,086

PREPARED IN THE OFFICES OF
H.R. LOVETT AND ASSOCIATES
ENGINEERS AND SURVEYORS
By *J.R. Palmer*
REG. C. E. NO. 10410

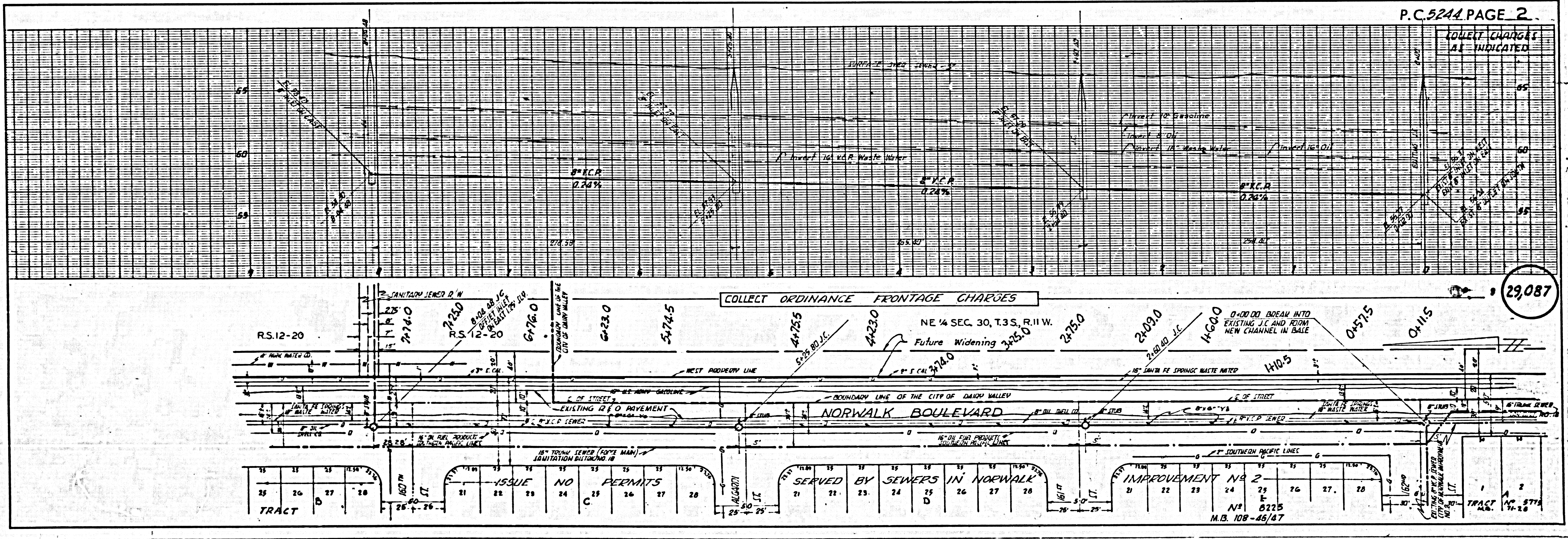
FOR LEGEND SEE PLAN NO. S-A-64

NOTE
GRADES TO WHICH THIS IMPROVEMENT IS TO BE CONSTRUCTED ARE SHOWN ON PLANS AND PROFILES. GRADE POINTS FOR TOP OF CURB, CENTER LINE OF STREETS, OR CENTER LINE OF ALLEYS ARE SHOWN BY CIRCLES ON PROFILES AT ALL POINTS BETWEEN DESIGNATED POINTS. THE GRADE SHALL BE ESTABLISHED SO AS TO CONFORM TO A STRAIGHT LINE DRAWN BETWEEN SAID DESIGNATED POINTS.
ELEVATIONS ARE IN FEET ABOVE U.S.C. AND G.S. MEAN SEA LEVEL. DATUM OF 1929.
THIS DRAWING AND THE DATA HEREON ARE HEREBY MADE A PART OF THE SPECIFICATIONS.
WORK SHALL BE CONSTRUCTED ACCORDING TO SPECIFICATIONS ON FILE IN THE OFFICE OF THE CITY ENGINEER AND SHALL BE PROSECUTED ONLY IN THE PRESENCE OF THE ENGINEER.
BEFORE WORK CAN BE STARTED, THE CONTRACTOR MUST OBTAIN A PERMIT TO EXCAVATE IN CITY STREETS FROM THE CITY OF NORWALK, AND MAKE A DEPOSIT WITH THE CITY ENGINEER, 1252 S. BRIDGE STREET, SUFFICIENT TO COVER THE COST OF CONSTRUCTION INSPECTION AND RECORD PLANS.
APPROVAL OF THIS PLAN BY THE CITY OF NORWALK DOES NOT CONSTITUTE A REPRESENTATION AS TO THE ACCURACY OF THE LOCATION OF OR THE EXISTENCE OR NON-EXISTENCE OF ANY UNDERGROUND UTILITY PIPE, OR STRUCTURE WITHIN THE LIMITS OF THIS PROJECT. THIS NOTICE APPLIES TO ALL PAGES.
IF WORK IS TO BE DONE ON A STATE HIGHWAY, A PERMIT MUST BE OBTAINED FROM THE STATE OF CALIFORNIA, DIVISION OF HIGHWAYS, 120 SOUTH SPRING STREET.

CITY OF NORWALK, CALIFORNIA

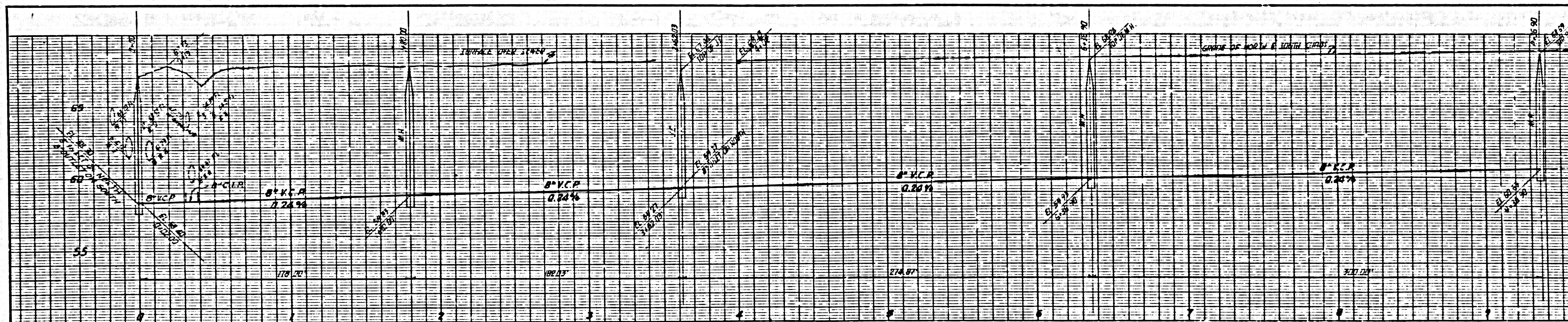
APPROVED, JOHN A. LAMBE, CITY ENGINEER
APPROVED, A. M. BAWN, CHIEF ENGINEER
CO. JAN DIST. NO. 5
By *J.A. Hughes* SANITATION ENGINEER
By *A. M. Bawn* CHIEF ENGINEER
CHECKED BY *S.K. Orndorff* 9-11-59
OFFICE OF CITY ENGINEER, REG. C. E. NO. 5446
SUBMITTED BY: *John S. Eaton* 9-11-59
LOS ANGELES REGIONAL ENGINEER, REG. C. E. NO. 8377

COLLECT CHARGES AS INDICATED
Collected 9-11-59

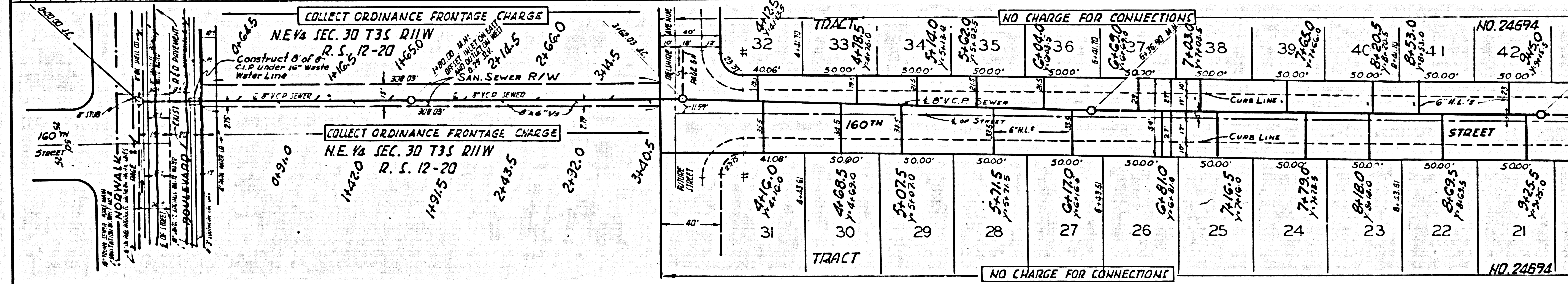


TRACT NO. 24694

COLLECT CHARGES AS INDICATED

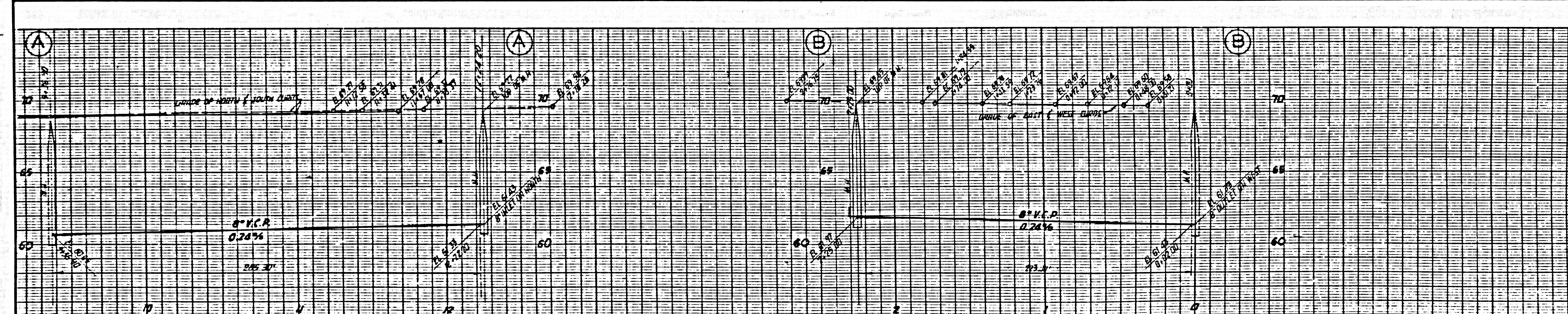


29,088

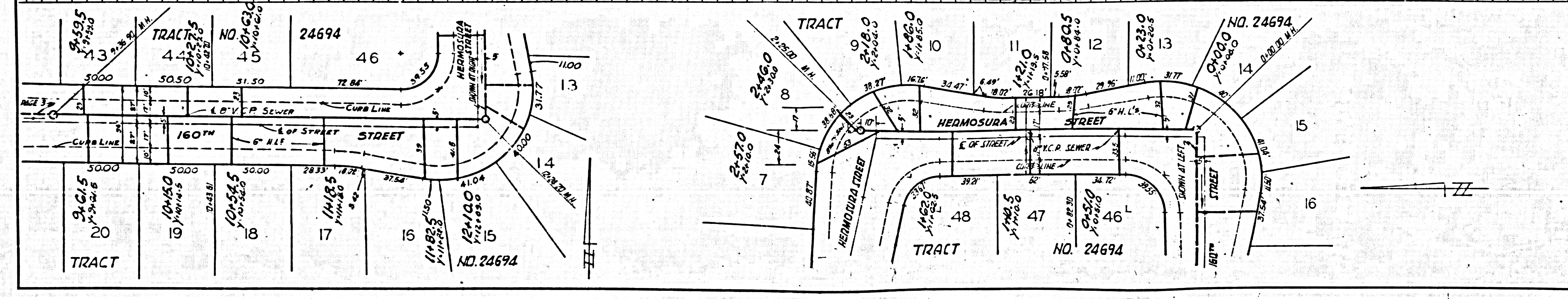


29,088

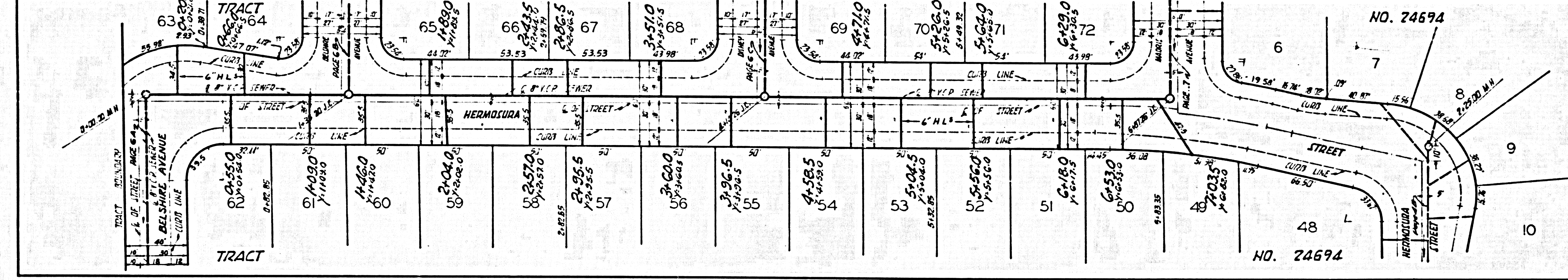
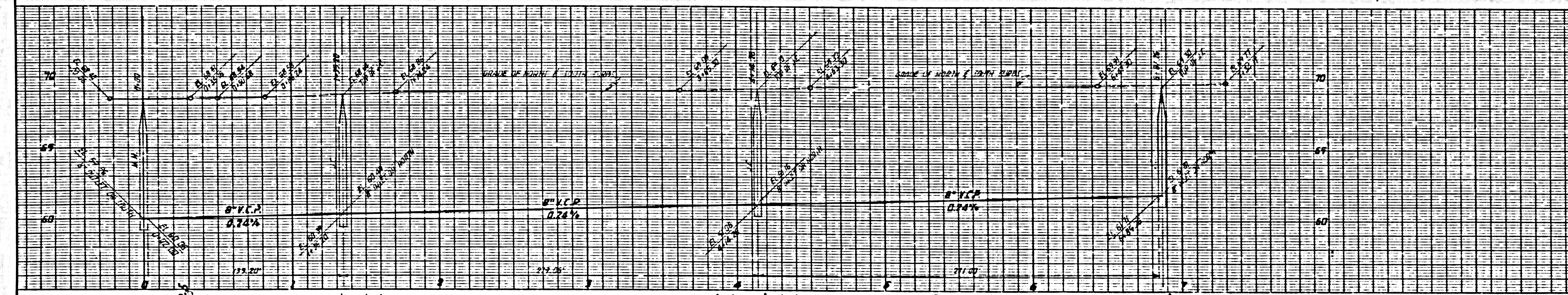
NO CHARGE FOR CONNECTIONS



29,089



NO CHARGE FOR CONNECTIONS



COLLECT CHARGES AS INDICATED

