

NORWALK BLDG. DIST. NO. 4.2

PROFILE ALIGNMENT AND GRADE OF **P.C. 5247**
SANITARY SEWERS PAGE 1
 TO BE CONSTRUCTED IN
R/W EAST OF VALLEY VIEW AVE

BENCH MARK
 Standard U.S.G.S. Disk Standard "62-714 6373"
 Located on West Side of North Concrete
 Walkway on North Side Southern Pacific
 Co. Blvd 20' East of E of Valley View
 Drains
ELEV 60.364

EQUATION:
 Subtract 0.533' from all
 elevations shown on all profiles
 to adjust to new bench mark
 elevation of 60.431

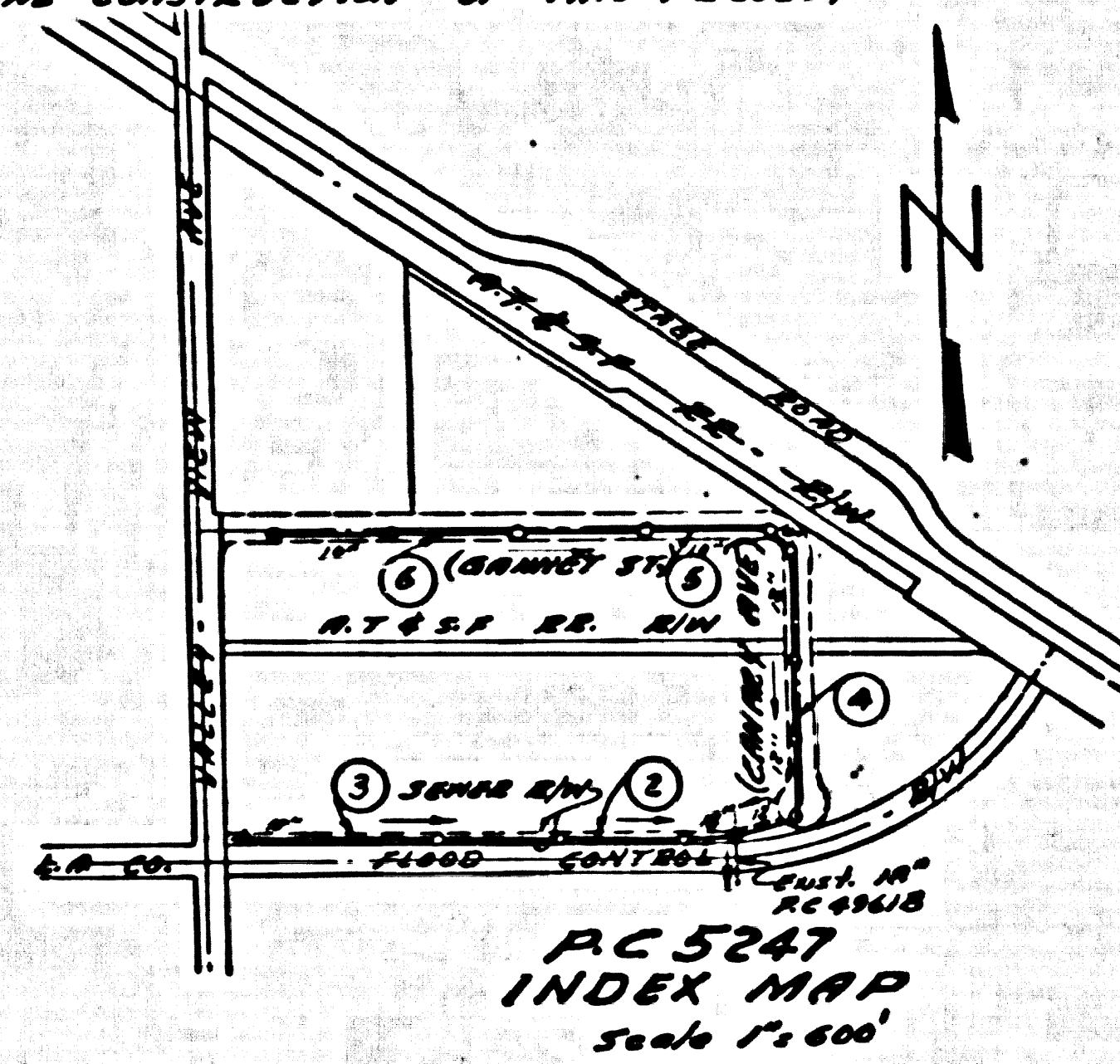
- NOTES:**
- PROVIDE STAKES ON THE PROPERTY LINE OR PROPERTY LINES PRODUCED AT RIGHT ANGLES TO THE SEWER LINE AT THE CENTER LINE OF EACH MANHOLE.
 - NO REPRESENTATIVE OF THE COUNTY ENGINEER WILL SURVEY OR LAY OUT ANY PORTION OF THE WORK.
 - THE OWNER OR HIS AUTHORIZED REPRESENTATIVE SHALL FURNISH THE COUNTY ENGINEER WITH GRADE SHEETS AND STATIONING'S FOR ALL HOUSE LATERALS AND Y BRANCHES AND SHALL PROVIDE STAKES FOR THEM AT THEIR PROPER LOCATIONS WITH STATIONING PLAINLY MARKED. ANY CHANGE IN LOCATION SHALL BE REQUESTED IN WRITING BY THE OWNER OR HIS REPRESENTATIVE.
 - THE PRIVATE ENGINEER SHALL FURNISH THE HOUSE LATERAL DEPTH AT THE PROPERTY LINE BELOW THE TOP OF CURB ELEVATION FOR EACH HOUSE LATERAL ON THE GRADE SHEET.
 - NO REVISIONS SHALL BE MADE IN THIS PLAN WITHOUT THE APPROVAL OF THE COUNTY ENGINEER.
 - USE STANDARD MANHOLE FRAMES AND COVERS, S-117, EXCEPT AS NOTED.
 - USE STANDARD STRENGTH PIPE EXCEPT AS NOTED.
 - USE CEMENT MORTAR OR "WEDGE-LOCK" OR "SPREAD-BEAT" FOR ALL V.C.P. JOINTS F23 SPEC'S, SPEC. 34 & 42.
 - RESURFACE ALL TRENCH WITHIN PAVED AREA TO MEET L.A. COUNTY ROAD DEPT. OR CALIF. STATE HIGHWAY REQUIREMENTS IN ACCORDANCE WITH PERMITS.
 - INCASE FOUR FEET OF SEWER AT POINTS OF INTERFERENCE WITH POLES, CASE III, S-117.
 - HOUSE LATERALS TO BE CONSTRUCTED WITH INVERTS AT PROPERTY LINE _____ FEET BELOW CURB GRADE EXCEPT AS NOTED.
 - ALL STRUCTURES SHALL BE BRICK SEWER STRUCTURES, S-116, EXCEPT AS NOTED.
 - FOR ALLOWABLE LEAKAGE TEST USE FORMULA NO. 1, SPEC'S, SEC. 54.
 - MANHOLE TOPS IN UNIMPROVED RIGHTS-OF-WAY TO BE SIX INCHES ABOVE FINISHED GRADE.
 - THE CONTRACTOR SHALL NOTIFY THE CONSTRUCTION & STORM DRAIN DIVISION BY TELEPHONE, MADISON 9-09, EXT. 346, AT LEAST TWENTY HOUR BEFORE STARTING ANY WORK UNDER THIS CONTRACT.
 - STANDARD SURVEYING AND PLANNING MAPS ARE USED EARLY IN THE CONSTRUCTION OF THIS PROJECT.

PRIVATE CONTRACT NO. 5247
(J.N. 0351-47)
 W.S. 34
 3 SHEETS, 6 PAGES
 SCALE: VERT. 1" = 4' HORIZ. 1" = 40'
 AUGUST, 1959
 PREPARED IN THE OFFICES OF
CENTRAL MANUFACTURING DISTRICT INC.
 BY Arthur H. Cook
 REG. C. E. NO. 9727
28,692

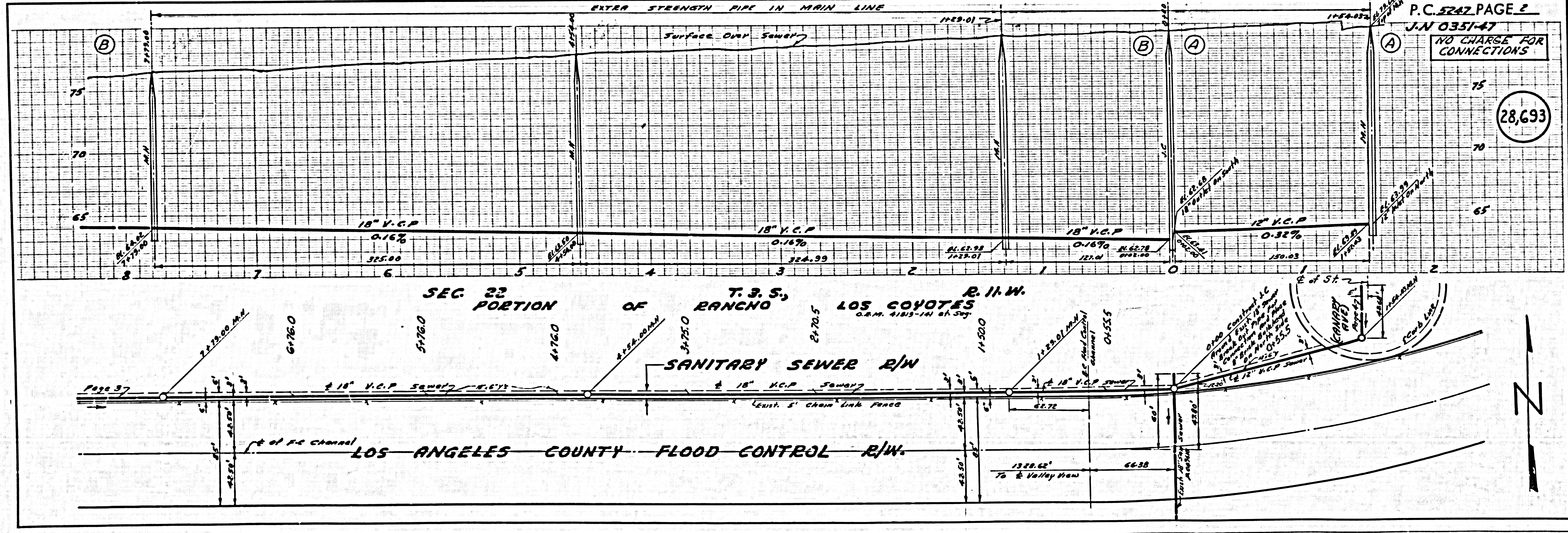
NOTES:
 GRADES TO WHICH THE IMPROVEMENT IS TO BE CONSTRUCTED ARE SHOWN ON PLANS AND PROFILES. GRADE POINTS FOR TOP OF CURBS, CENTER LINE OF STREETS, OR CENTER LINE OF ALLEYS ARE SHOWN BY CIRCLES ON PROFILES. AT ALL POINTS BETWEEN DESIGNATED POINTS THE GRADE SHALL BE ESTABLISHED SO AS TO CONFORM TO A STRAIGHT LINE DRAWN BETWEEN SAID DESIGNATED POINTS.
 ELEVATIONS ARE IN FEET ABOVE U.S.C. & G.S. SEA LEVEL DATUM OF 1929.
 THIS DRAWING AND THE DATA HEREON ARE HEREBY MADE A PART OF THE SPECIFICATIONS.
 WORK SHALL BE CONSTRUCTED ACCORDING TO SPECIFICATIONS ON FILE IN THE OFFICE OF THE COUNTY ENGINEER AND SHALL BE PROSECUTED ONLY IN THE PRESENCE OF THE COUNTY ENGINEER.
 BEFORE WORK CAN BE STARTED, THE CONTRACTOR MUST OBTAIN A PERMIT TO EXCAVATE IN COUNTY STREETS FROM THE L.A. COUNTY ROAD DEPT., DISTRICT OFFICE NO. 4, AND MAKE A DEPOSIT WITH THE COUNTY ENGINEER, ROOM 234 PAN AMERICAN BUILDING, 243 SO. BROADWAY SUFFICIENT TO COVER THE COST OF CONSTRUCTION INSPECTION AND RECORD PLANS.
 APPROVAL OF THIS PLAN BY THE COUNTY OF LOS ANGELES DOES NOT CONSTITUTE A REPRESENTATION AS TO THE ACCURACY OF THE LOCATION OF OR THE EXISTENCE OR NON-EXISTENCE OF ANY UNDESIGNATED UTILITY PIPE OR STRUCTURE WITHIN THE LIMITS OF THIS PROJECT. THIS NOTE APPLIES TO ALL PAGES.
 IF WORK IS TO BE DONE IN A STATE HIGHWAY, A PERMIT MUST BE OBTAINED FROM THE STATE OF CALIFORNIA, DIVISION OF HIGHWAYS, 126 SOUTH SPRING STREET.

FOR LEGEND SEE PLAN NO. S-A-64
 APPROVED, JOHN A. LAMBE, COUNTY ENGINEER
 APPROVED, C.B. CAMPBELL, CIVIL ENGINEER
 REG. C.E. NO. 18
 BY C.E. Priddy ASSISTANT/LIAISON ENGINEER
 BY J.P. Probst OFFICE ENGINEER
 CHECKED BY J.K. Onda 11-25-59
 OFFICE OF COUNTY ENGINEER, REG. C. E. NO. 9406
 SUBMITTED BY John L. Estus 11-20-59
 Lic./Contract Regional Engineer Reg. C.E. No. 9471

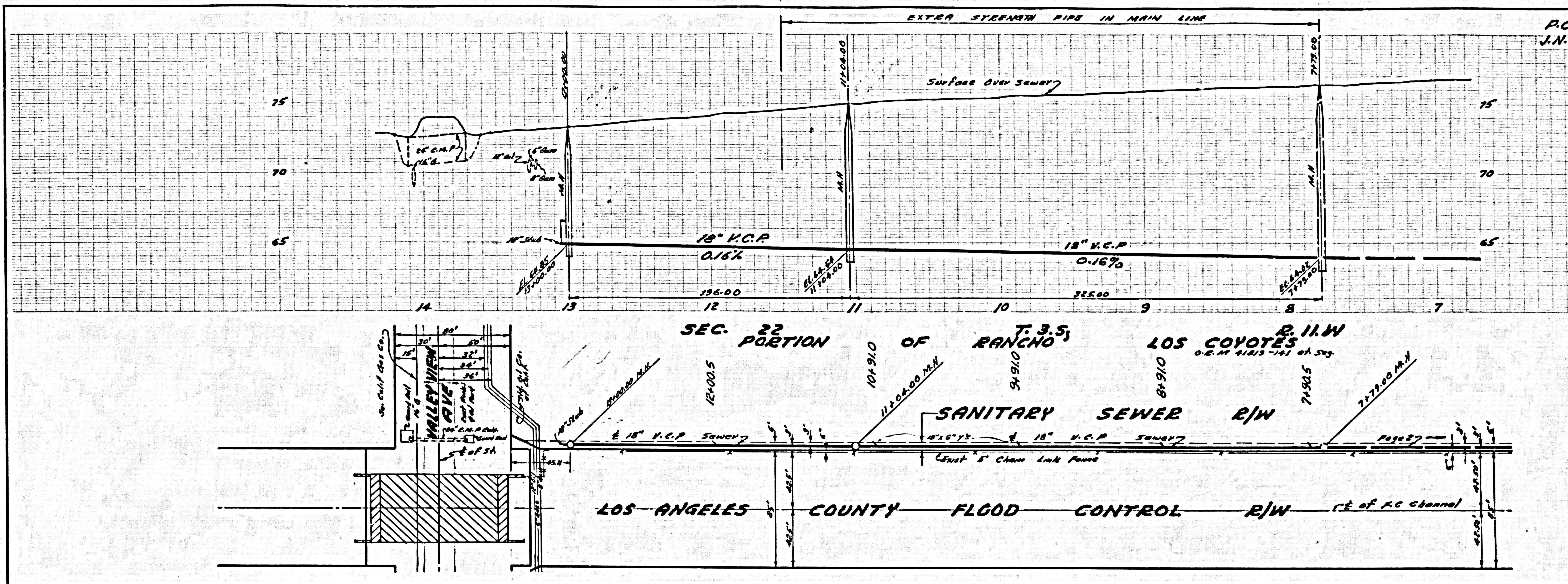
**ISSUE NO PERMITS
 UNTIL OUTFALL SEWER
 IS COMPLETED**



**NO CHARGE
 FOR CONNECTIONS**
John L. Estus 11-22-59

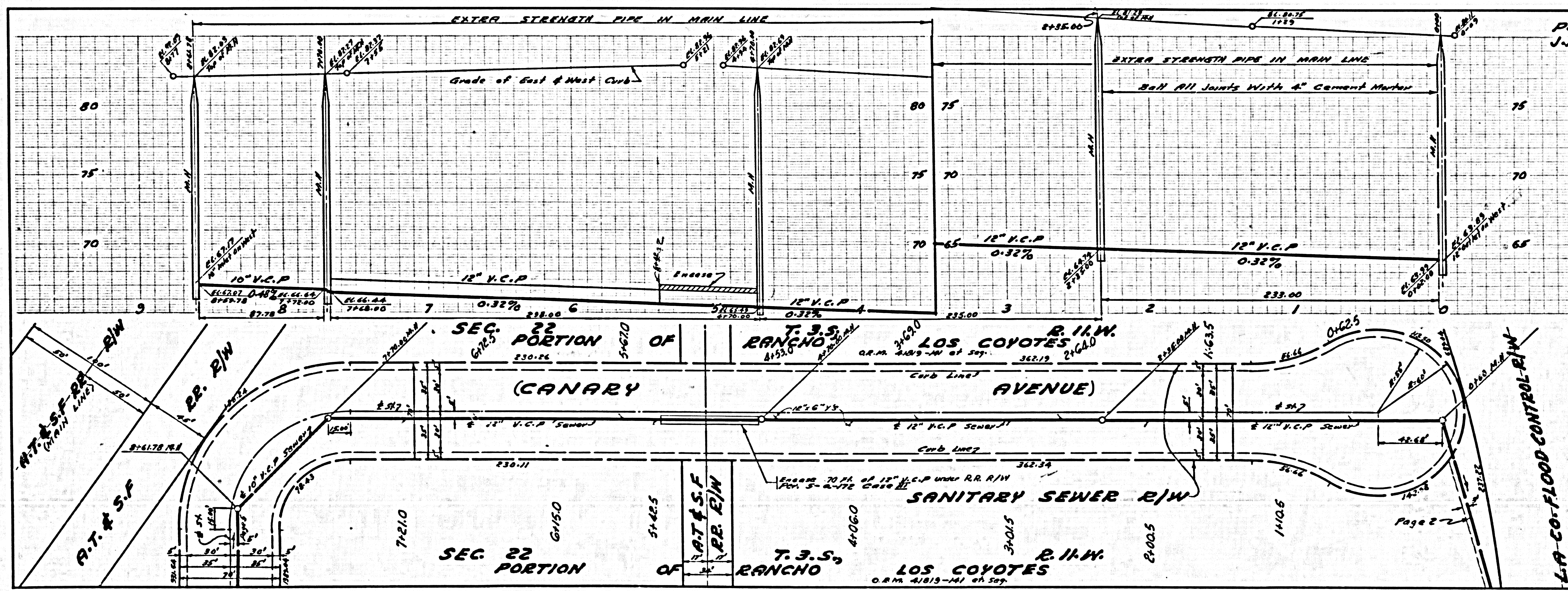
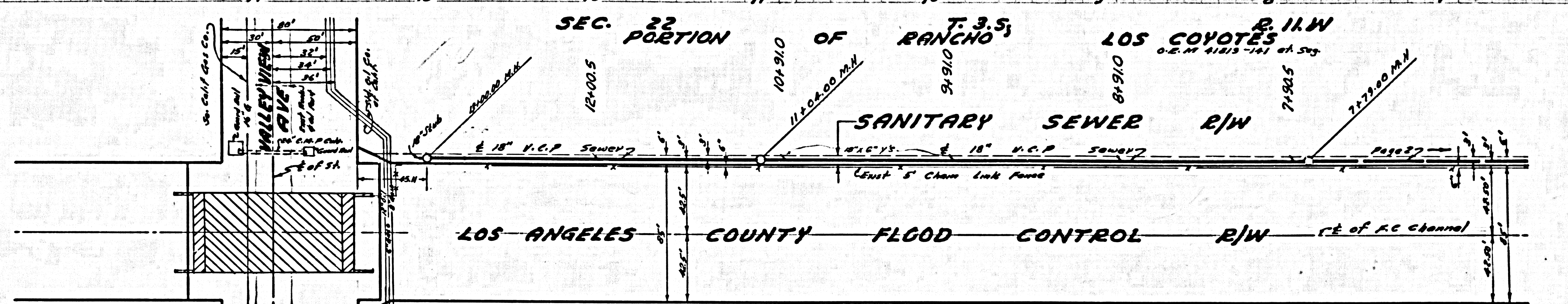


P.C. 5247 PAGE 2
J.N. 0351-47
NO CHARGE FOR CONNECTIONS
28,693



P.C. 5247 PAGE 3
 J.N. 0351-47
 NO CHARGE FOR CONNECTIONS

28,694



P.C. 5247 PAGE 4
 J.N. 0351-47
 NO CHARGE FOR CONNECTIONS

28,695

