

DIST	COUNTY	ROUTE	SEC	SHEET NO.	TOTAL SHEETS
VII	LA	158	C		

Approved _____ Dist. Eng. Dist.

PLAN & PROFILE OF
SANITARY SEWERS
 TO BE RECONSTRUCTED UNDER
PRIVATE CONTRACT NO 5249: H-1
 SHEET TWO W.S. 24 MARCH, 1960
 COUNTY OF LOS ANGELES, CALIFORNIA
 APPROVED, JONK A. LAMBE, COUNTY ENGINEER

BY C.E. Priddy
 ASST. SANITATION ENGINEER

APPROVED, C.R. COMPTON, CHIEF ENGINEER
 COUNTY SANITATION DISTRICT NO. 5

BY H. J. [Signature]
 OFFICE ENGINEER

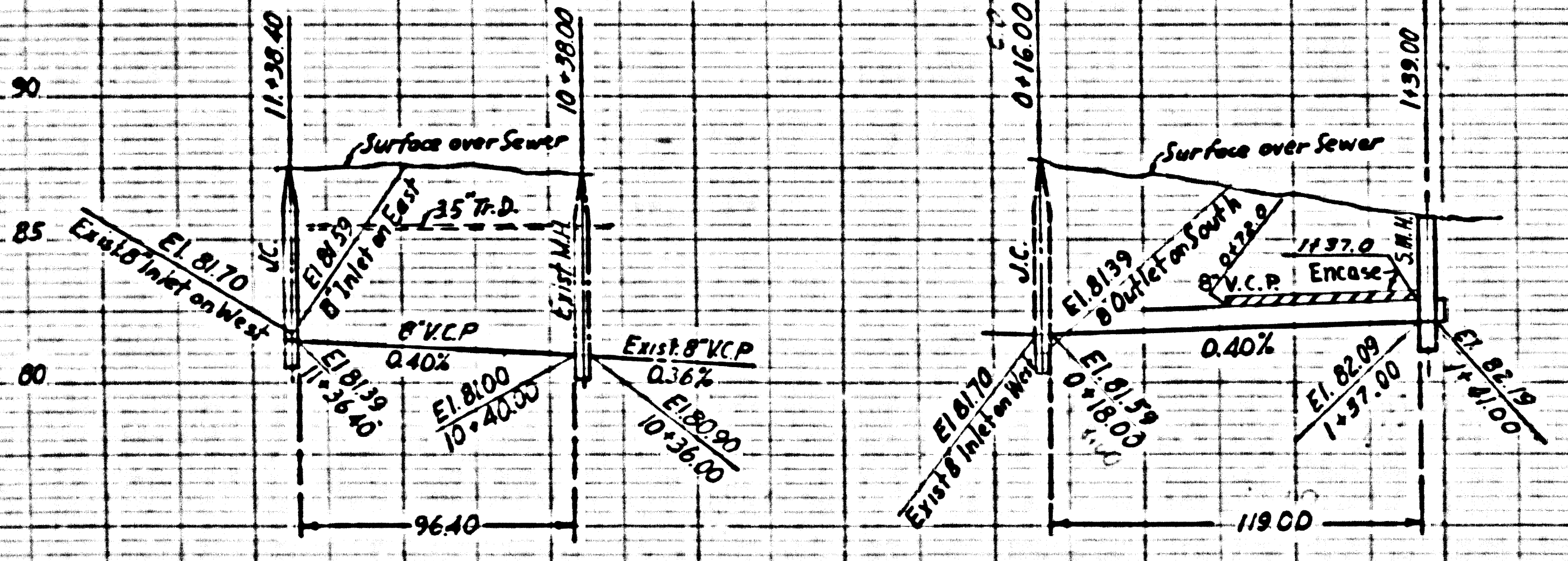
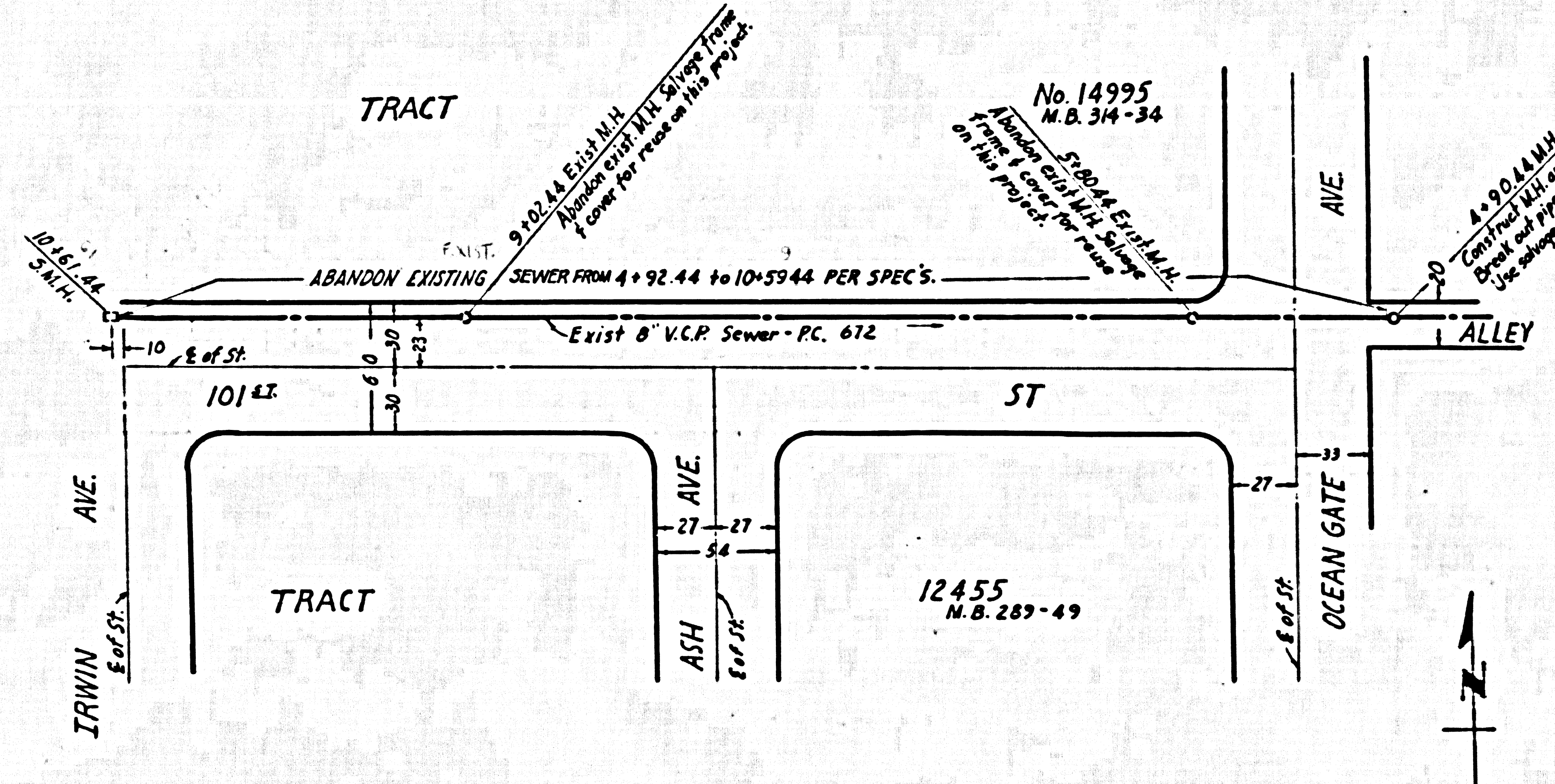
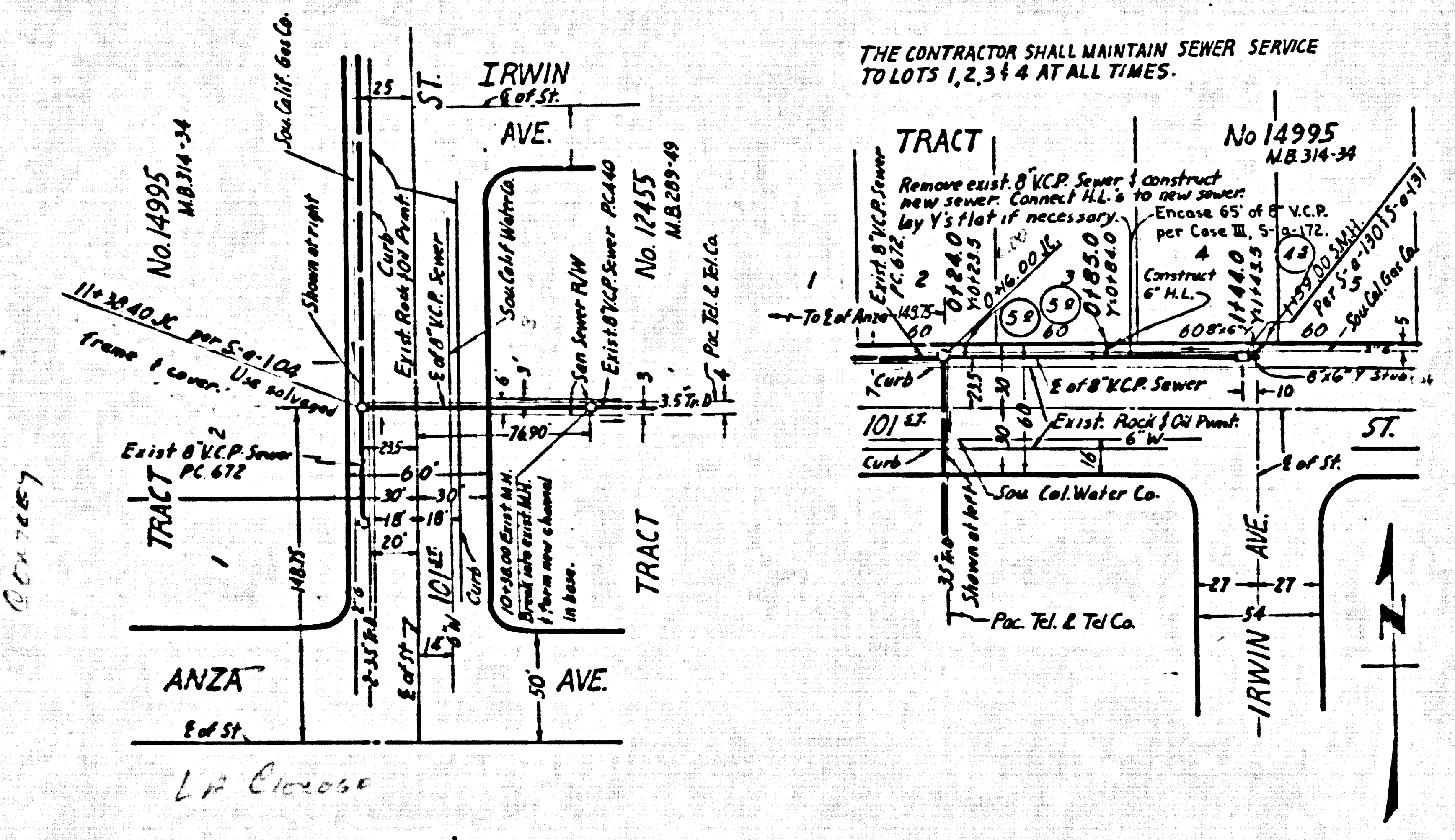
NOTE:
 The contractor shall notify the Construction & Storm Drain Division of the County Engineer by telephone, Madison 9-4747, Ext. 362, at least 24 hours before starting any work on this sheet.

29,004

-SCALES-
 Horiz. : 1" = 50'
 Vert. : 1" = 5'

B.M. El. 83.03 ft.
 N.E. Cor. Anza Ave & 104th St
 L.P.M. Spk. 48th N of B.C.R. of E.C.A.

THE CONTRACTOR SHALL MAINTAIN SEWER SERVICE TO LOTS 1, 2, 3 & 4 AT ALL TIMES.



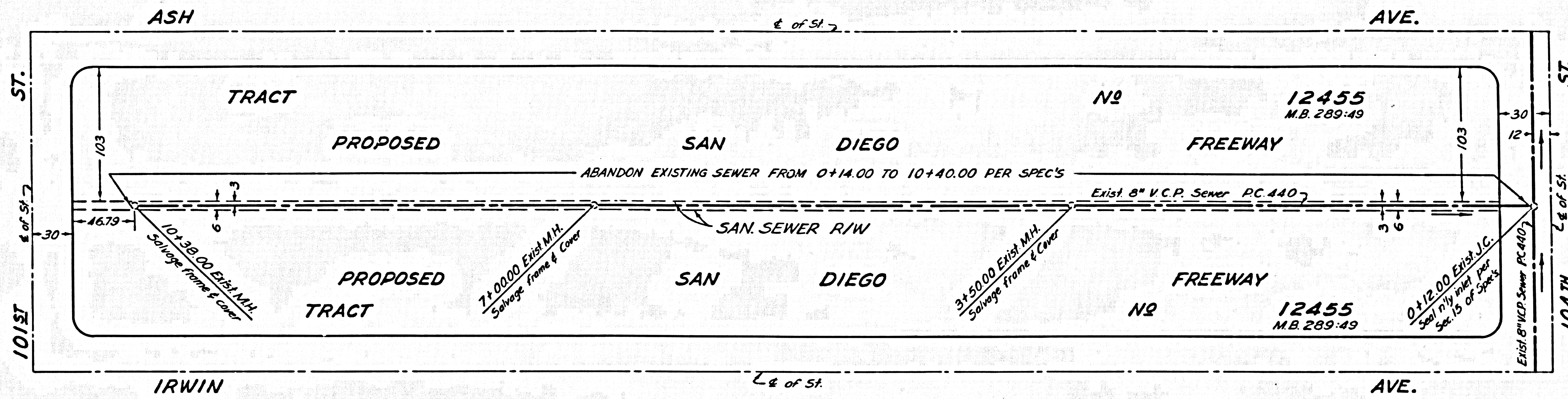
Ce. Exc.
 Yds. Emb.
 Sta.

12 11 10 9 8 7 6 5 4 3 2 1 0 1 2

FEDERAL PROJECT NO.	SHEET NO.	TOTAL SHEETS
7	7	

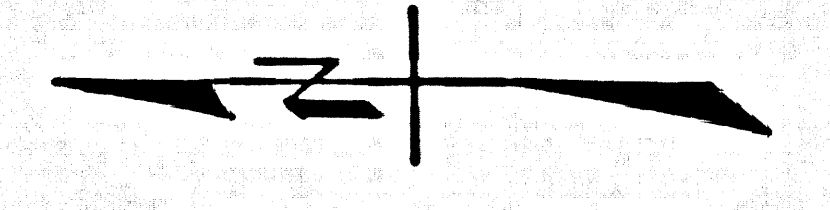
DIST.	COUNTY	ROUTE	SEC.	SHEET NO.	TOTAL SHEETS
VII	LA	158	C		

Approved _____
Dist. Eng. Dist.



PLANS & PROFILES OF
SANITARY SEWERS
TO BE RECONSTRUCTED
PRIVATE CONTRACT NO 5249 H-I
SHEET ONE W.S.24 MARCH, 1960
COUNTY OF LOS ANGELES, CALIFORNIA
APPROVED, JOHN A. LAMBIE
COUNTY ENGINEER
BY C. E. THOMPSON
ASST. SANITATION ENGINEER

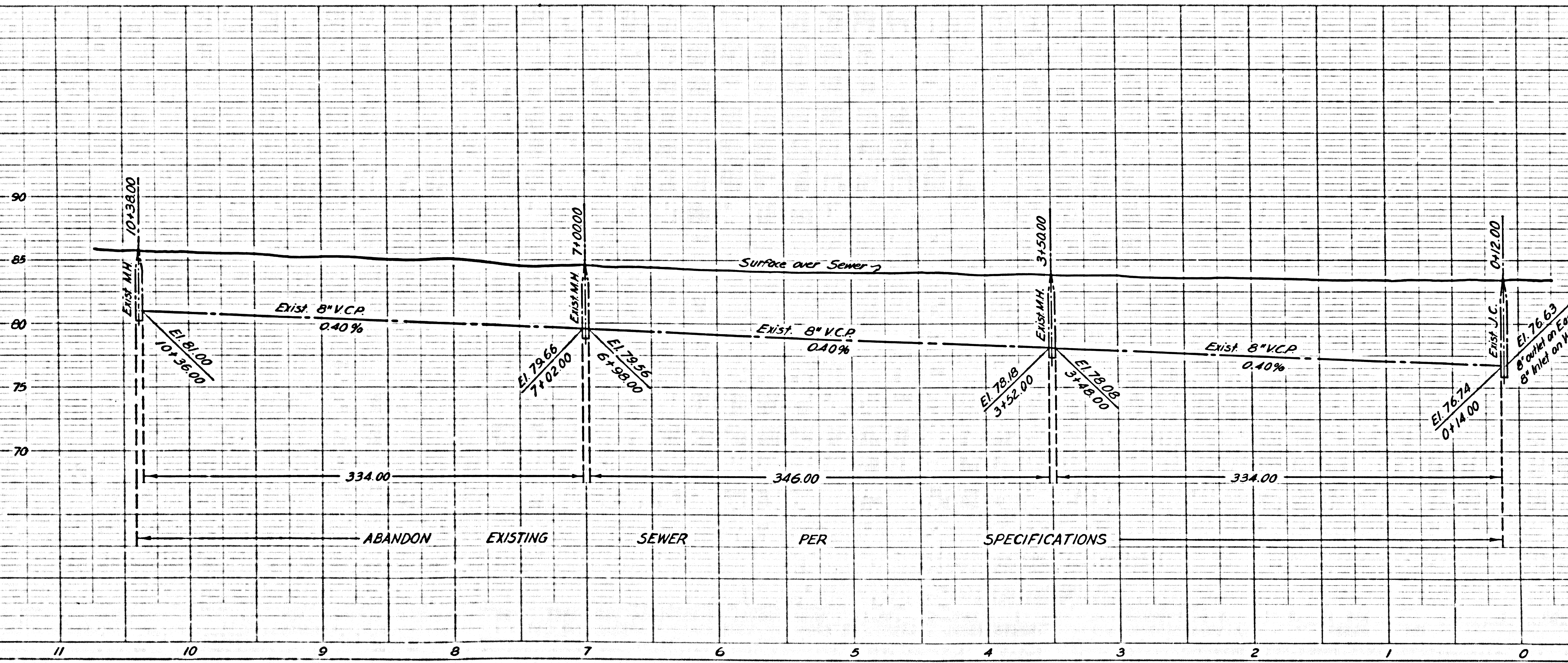
- NOTE:
- The contractor shall notify the Construction & Storm Drain Division of the County Engineer by telephone, MAdison 9-4747 Ext. 362, at least 24 hours before starting any work on this sheet.
 - The contractor shall deliver salvaged M.H. frames & covers to the County Sewer Maintenance Yard, 1129 E. 59th St, Los Angeles 1.



Horiz. Scale: 1" = 50'
Vert. Scale: 1" = 5'

29,005

Bench Mark: L & T. West side of Walk to House #5003, North side of Century Blvd. 50' West of E of Felton Ave. El. 89.20



Cs. Exc.
Tc. Emb.
Sta.