

**LOMITA BLDG. DIST. NO. 7.1**

PROFILE ALIGNMENT AND GRADE OF  
**SANITARY SEWERS** P.C. 5253  
PAGE 1  
TO BE CONSTRUCTED IN J.N. 0351.50

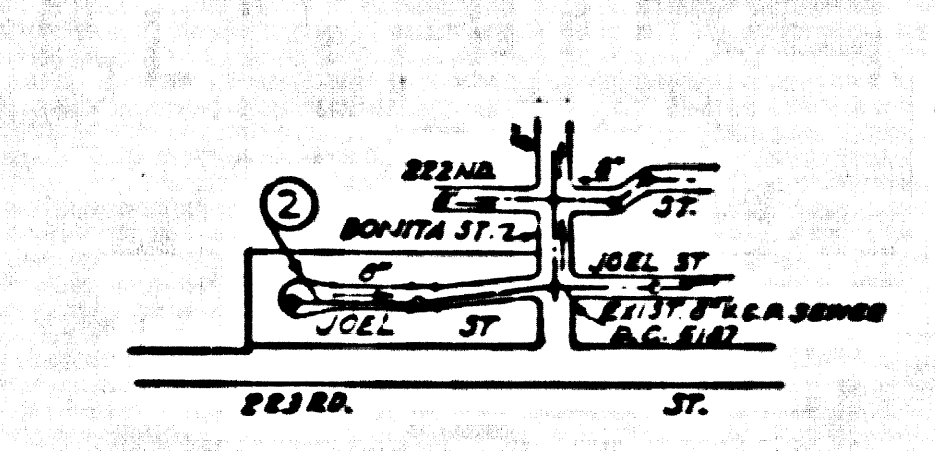
**BENCH MARK: S.Y. 4088 ELEV. 27.940**  
Los Angeles County Survey Mon. 16' E. of E. Aviston Blvd. & 57' G' N.2 of E. 223rd St.  
M.C.D. D.M. 23-10, 1952 R.E. 63 (Gardena Quad).  
1955 Adj.

- NOTES:**
1. PROVIDE STAKES ON THE PROPERTY LINE OR PROPERTY LINES PRODUCED AT RIGHT ANGLES TO THE SEWER LINE AT THE CENTER LINE OF EACH MANHOLE.
  2. NO REPRESENTATIVE OF THE COUNTY ENGINEER WILL SURVEY OR LAY OUT ANY PORTION OF THE WORK.
  3. THE OWNER OR HIS AUTHORIZED REPRESENTATIVE SHALL FURNISH THE COUNTY ENGINEER WITH GRADE SHEETS AND STATIONING FOR ALL HOUSE LATERALS AND Y BRANCHES AND SHALL PROVIDE STAKES FOR THEM AT THEIR PROPER LOCATIONS WITH STATIONING PLAINLY MARKED. ANY CHANGE IN LOCATION SHALL BE REQUESTED IN WRITING BY THE OWNER OR HIS REPRESENTATIVE.
  4. THE PRIVATE ENGINEER SHALL FURNISH THE HOUSE LATERAL DEPTH AT THE PROPERTY LINE BELOW THE TOP OF CURB ELEVATION FOR EACH HOUSE LATERAL ON THE GRADE SHEET.
  5. NO REVISIONS SHALL BE MADE IN THESE PLANS WITHOUT THE APPROVAL OF THE COUNTY ENGINEER.
  6. USE STANDARD MANHOLE FRAMES AND COVERS, S-117, EXCEPT AS NOTED.
  7. USE STANDARD STRENGTH PIPE EXCEPT AS NOTED.
  8. USE CEMENT MORTAR OR "WEDGE LOCK" OR "SPREAD-SEAL" FOR ALL V.C.P. JOINTS PER S.P.C.C., SECS. 96 & 98.
  9. RESURFACE ALL TRENCH WITHIN PAVED AREA TO MEET L.A. COUNTY ROAD DEPT. OR CALIF. STATE HIGHWAY REQUIREMENTS IN ACCORDANCE WITH PERMITS.
  10. ENCASE FOUR FEET OF SEWER AT POINTS OF INTERFERENCE WITH POLES, CASE III, S-172.
  11. HOUSE LATERALS TO BE CONSTRUCTED WITH INVERTS AT PROPERTY LINE 6 FEET BELOW CURB GRADE EXCEPT AS NOTED.
  12. ALL STRUCTURES SHALL BE BRICK BLVD. STRUCTURES, S-104, EXCEPT AS NOTED.
  13. FOR ALL-WAYABLE LEAKAGE TEST USE FORMULA NO. 1, S.P.C.C., SEC. 54.
  14. MANHOLE TOPS IN UNIMPROVED RIGHTS-OF-WAY TO BE SIX INCHES ABOVE FINISHED GRADE.
  15. THE CONTRACTOR SHALL NOTIFY THE CONSTRUCTION & STORM DRAIN DIVISION BY TELEPHONE, MADISON 9-4747, EXT. 343, AT LEAST TWENTY-FOUR HOURS BEFORE STARTING ANY WORK UNDER THIS CONTRACT.
  16. STANDARD SPECIFICATIONS DATED MAY 15, 1959 APPLY IN THE CONSTRUCTION OF THIS PROJECT.

**TRACT No 24994**  
**PRIVATE CONTRACT NO. 5253**

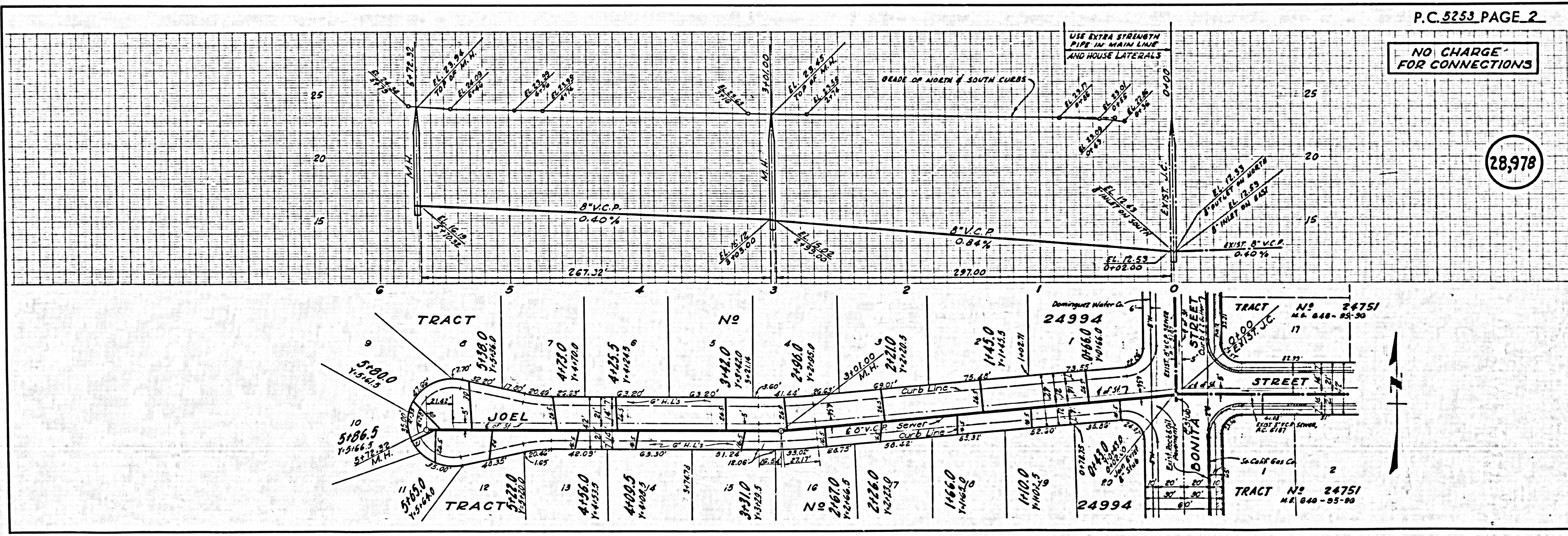
W.S. 28  
1 SHEET; 2 PAGES  
SCALE: VERT. 1"=4' HORIZ. 1"=40' AUGUST, 1959 (28,977)  
PREPARED IN THE OFFICES OF  
**A. RICHARD BROWN, JR.**  
7632 CANTON AVENUE, BUNTING PARK, CALIF.  
PHONE: LAWRENCE 2-2333  
REG. C. E. NO. 2352  
FOR LEGEND SEE PLAN NO. S-A-64

**NO CHARGE FOR CONNECTIONS**  
*Arthur P. Peary*



**NOTE:**  
GRADES TO WHICH THIS IMPROVEMENT IS TO BE CONSTRUCTED ARE SHOWN ON PLANS AND PROFILE. GRADE POINTS FOR TOP OF CURB, CENTER LINE OF STREET, OR CENTER LINE OF ALLEY ARE SHOWN BY CHIEFS ON PROFILES. AT ALL POINTS BETWEEN DESIGNATED POINTS THE GRADE SHALL BE ESTABLISHED SO AS TO CONFORM TO A STRAIGHT LINE DRAWN BETWEEN SAID DESIGNATED POINTS.  
ELEVATIONS ARE IN FEET ABOVE U.S.C. & G.S. MEAN SEVERAL DATUM OF 1929.  
THE DRAWING AND THE DATA HEREON ARE HEREBY MADE A PART OF THE SPECIFICATIONS.  
WORK SHALL BE CONSTRUCTED ACCORDING TO SPECIFICATIONS ON FILE IN THE OFFICE OF THE COUNTY ENGINEER AND SHALL BE PROSECUTED ONLY IN THE PRESENCE OF THE COUNTY ENGINEER.  
BEFORE WORK CAN BE STARTED, THE CONTRACTOR MUST OBTAIN A PERMIT TO EXCAVATE IN COUNTY STREETS FROM THE L.A. COUNTY ROAD DEPT., DISTRICT OFFICE NO. 3 AND PAY A FEE TO THE COUNTY ENGINEER FROM SAN FERNANDO BUILDING, 318 20 BROADWAY, SHERMANTON TO COVER THE COST OF CONSTRUCTION INSPECTION AND RECORD PLANS.  
APPROVAL OF THIS PLAN BY THE COUNTY OF LOS ANGELES DOES NOT CONSTITUTE A REPRESENTATION AS TO THE ACCURACY OF THE LOCATION OF OR THE EXISTENCE OR NON-EXISTENCE OF ANY UNDERGROUND UTILITY PIPE, OR STRUCTURE WITHIN THE LIMITS OF THE PROJECT. THIS NOTE APPLIES TO ALL PAGES.  
NO WORK IS TO BE DONE IN A STATE HIGHWAY, A PERMIT MUST BE OBTAINED FROM THE STATE OF CALIFORNIA, DIVISION OF HIGHWAYS, 120 SOUTH BRIDGE STREET.

**COUNTY OF LOS ANGELES, CALIFORNIA**  
APPROVED, JOHN A. LAWRENCE, COUNTY ENGINEER  
APPROVED, C.R. COMPTON, CHIEF ENGINEER  
BY *C.E. Brown* COUNTY ENGINEER  
BY *J. H. Compton* CHIEF ENGINEER  
CHECKED BY *St. Oude* 12-16-59  
OFFICE OF COUNTY ENGINEER, 200 S. W. 100  
SUBMITTED BY: *Jack C. Lansing*  
PAUL VERDEG CENTINELA VALLEY REGIONAL ENGINEER



P.C. 5253 PAGE 2

**NO CHARGE FOR CONNECTIONS**

(28,978)