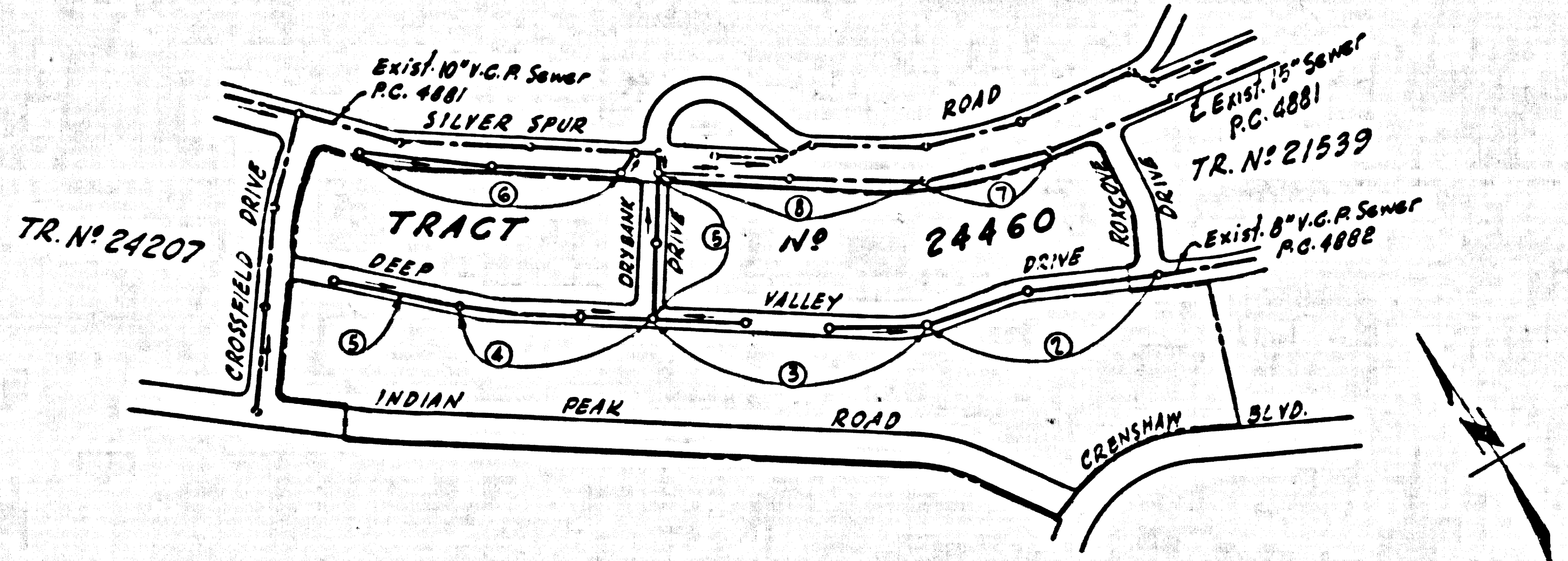


B.M. County Surveyor - U.S.G. Std. disc stamped
 Q786-1946 set flush with ground 43' N. of e.
 Palos Verdes Drive North 47.4' E. of e. Narbonne
 Ave.
 Elev. 393.518

Note: County Surveyor B.M. 36-2 Precise Survey
 1933 adj: 393.283 - add 0.065 to all elevations shown
 hereon to agree with 1933 adjustment.



INDEX MAP
 TRACT No 24460
 P.C. 5256
 SCALE: 1"=400'

NO CHARGE FOR
 CONNECTIONS
 S. Carter 10-7-58

Revised Alignment & Grade of Sewer in
 Deep Valley west of Drybank Drive.
 Approved *[Signature]*
 PALOS VERDES, CONTINENTAL VALLEY ACQUISITION
 ENGINEERS

LOMITA BLDG. DIST. NO. 7.1

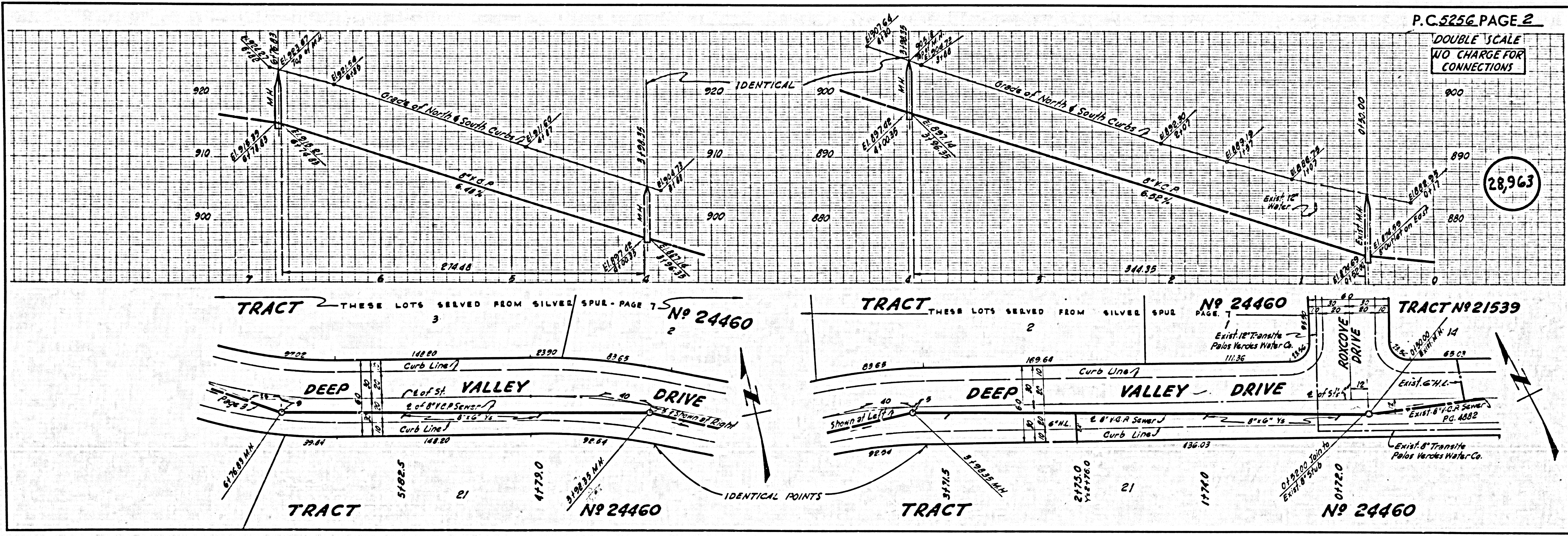
- NOTES:
1. PROVIDE STAKES ON THE PROPERTY LINE OR PROPERTY LINES PRODUCED AT RIGHT ANGLES TO THE CENTER LINE OF EACH MANHOLE.
 2. NO REPRESENTATIVE OF THE COUNTY ENGINEER WILL SURVEY OR LAY OUT ANY PORTION OF THE WORK.
 3. THE OWNER OR HIS AUTHORIZED REPRESENTATIVE SHALL FURNISH THE COUNTY ENGINEER WITH GRADY SHEETS AND STATIONING FOR ALL HOUSE LATERALS AND T BRANCHES AND SHALL PROVIDE STAKES FOR THEM AT THEIR PROPER LOCATIONS WITH EIGHT-FOOTING PLAINLY MARKED. ANY CHANGE IN LOCATION SHALL BE REQUESTED IN WRITING BY THE OWNER OR HIS REPRESENTATIVE.
 4. THE PRIVATE ENGINEER SHALL FURNISH THE HOUSE LATERAL DEPTH AT THE PROPERTY LINE BELOW THE TOP OF CURB ELEVATION FOR EACH HOUSE LATERAL ON THE GRADE SHEET.
 5. NO REVISIONS SHALL BE MADE IN THESE PLANS WITHOUT THE APPROVAL OF THE COUNTY ENGINEER.
 6. USE STANDARD MANHOLE FRAMES AND COVERS, S-117, EXCEPT AS NOTED.
 7. USE STANDARD ENGINEING AND EXCEPT AS NOTED.
 8. USE CHAMPT MORTAR OR "WEDG-LOCK" OR "WEDG-BEAT" FOR ALL V.C.P. JOINTS PER SPEC. SECT. 80 & 81.
 9. RESURFACE ALL TRINCH WITHIN PAVED AREA TO MEET L.A. COUNTY ROAD DEPT. OR CALIF. STATE HIGHWAY REQUIREMENTS IN ACCORDANCE WITH PERMITS.
 10. ENCASE FOUR FEET OF SEWER AT POINTS OF INTERFERENCE WITH POLES, CASE NO. S-172.
 11. HOUSE LATERALS TO BE CONSTRUCTED WITH INVERTS AT PROPERTY LINE. 6 FEET BELOW CURB GRADE EXCEPT AS NOTED.
 12. ALL STRUCTURES SHALL BE BRICK SEWER STRUCTURES, S-104, EXCEPT AS NOTED.
 13. FOR ALLOWABLE LEAKAGE TEST USE FORMULA NO. 1, SPEC. SEC. 84.
 14. MANHOLE TOPS IN UNIMPROVED RIGHTS-OF-WAY TO BE SIX INCHES ABOVE FINISHED GRADE.
 15. THE CONTRACTOR SHALL NOTIFY THE "CONSTRUCTION & STORM DRAIN DIVISION BY TELEPHONE, MADISON 6-26, EXT. 348, AT LEAST TWENTY-FOUR HOURS BEFORE STARTING ANY WORK UNDER THIS CONTRACT.
 16. NO CONSTRUCTION WILL BE PERMITTED IN FILLED AREAS UNLESS ACCEPTABLE CERTIFICATION IS SUBMITTED TO THE CONSTRUCTION DIVISION OF THE COUNTY ENGINEERS DEPARTMENT THAT COMPACTION IS GREATER THAN 90%.
 17. IF COMPACTION IS LESS THAN 90% THE SEWER MUST BE GRADED SPECIAL, M.M. BASIS EXCEPT AS SHOWN ON PLANS. IF COMPACTION IS GREATER THAN 90% CRADLING AND SPECIAL MANHOLE BASES ARE NOT REQUIRED. HOWEVER, JOINT COMPOUND MUST BE SUBSTITUTED FOR CEMENT MORTAR FOR ALL JOINTS IN FILLED AREAS.
 17. STANDARD SPECIFICATIONS DATED MAY 15, 1959 APPLY IN THE CONSTRUCTION OF THIS PROJECT.

ENGINEERING SERVICE CORPORATION					
1127 W. WASHINGTON BLVD.					
LOS ANGELES 15, CALIF.			RI. 9-7281		
REVISIONS		TRACED BY: <i>S.S.</i>			
		DES'G'D BY: <i>OTM</i>			
		CK'D BY: <i>A.M.S.</i>			
		SUBMITTED:			
SUB STRUCTURES OK'D					
W. O. NO.	DWG. NO.	DATE	SCALE	L. B.	P. B.
6777-74		JUNE, 1959	AS NOTED		

PROFILE ALIGNMENT AND GRADE OF P.C. 5256
 SANITARY SEWERS PAGE 1
 TO BE CONSTRUCTED IN J.N. 0351.53
 TRACT No 24460

PRIVATE CONTRACT NO. 5256
 W.S. 27
 4 SHEETS, 8 PAGES
 SCALE: VERT. 1"=4' HORIZ. 1"=40' JUNE, 1959
 PREPARED IN THE OFFICES OF
 ENGINEERING SERVICE CORPORATION (28,962)
 BY: *[Signature]*
 REG. C. E. NO. 3622
 FOR LEGEND SEE PLAN NO. S-A-64

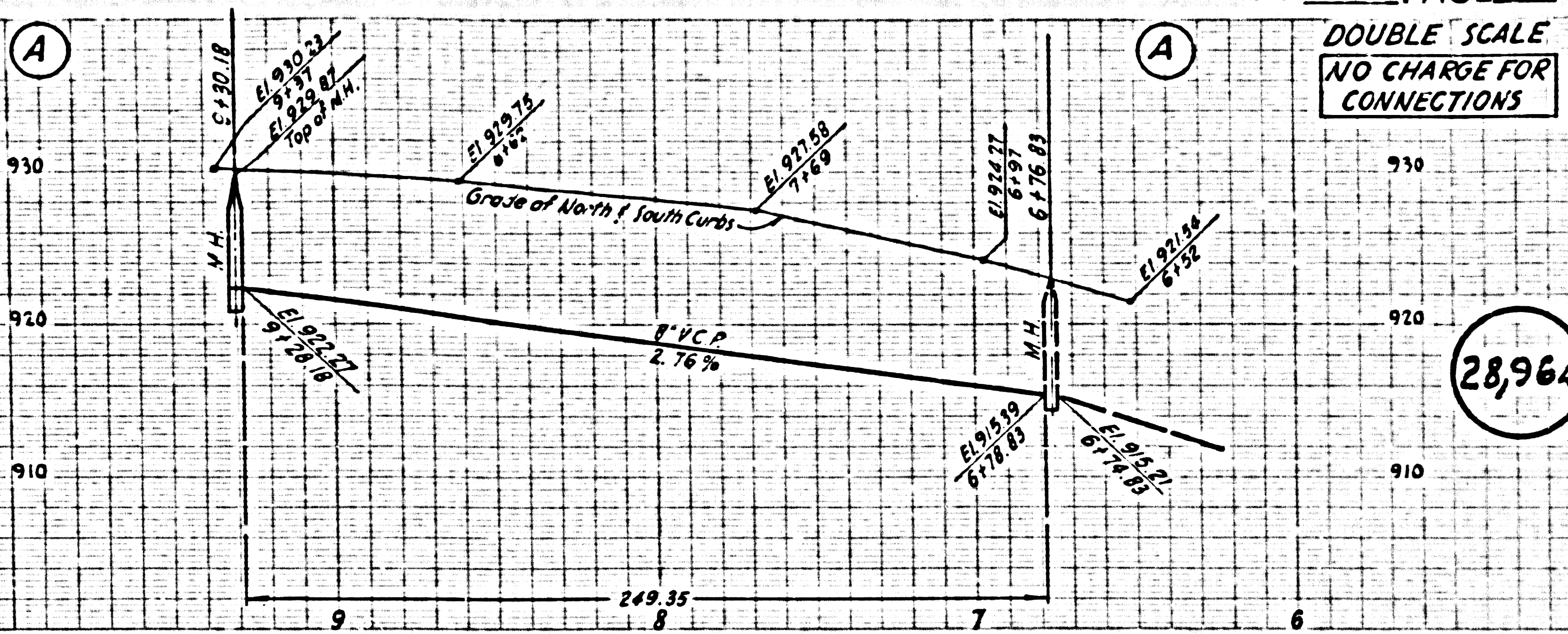
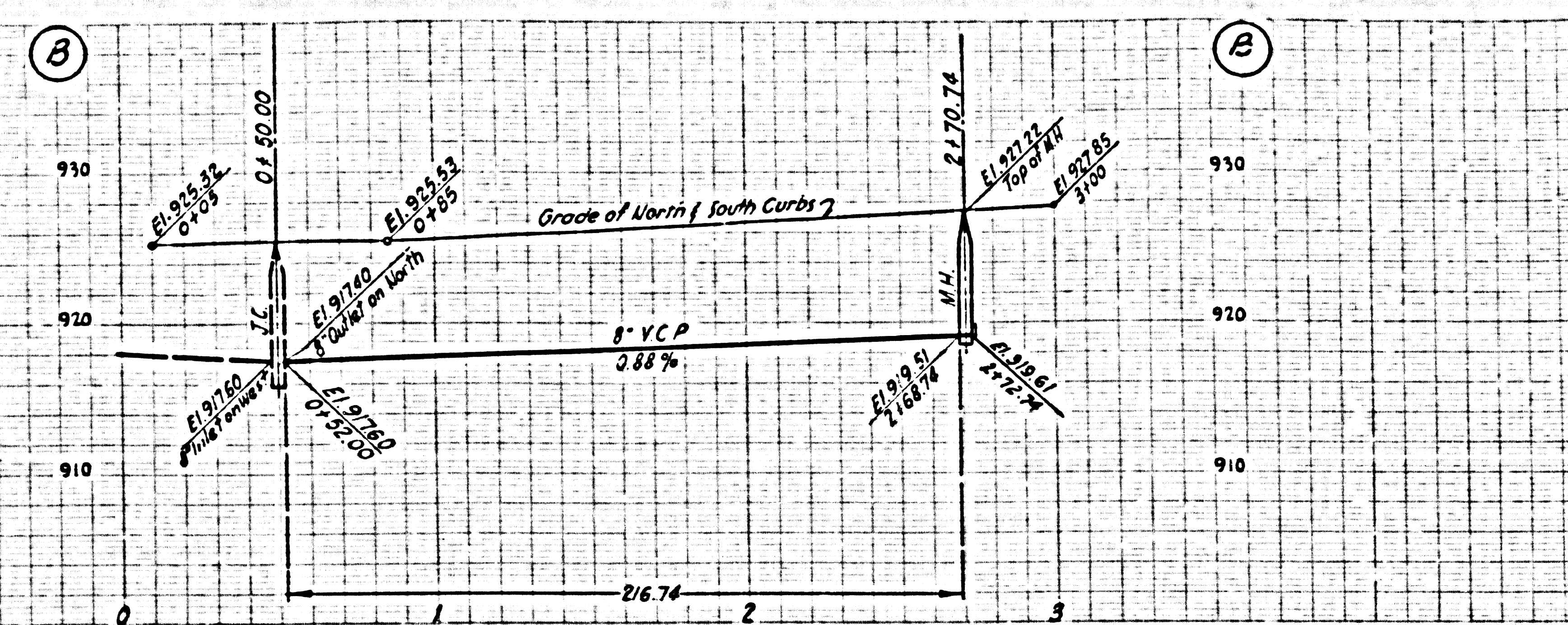
COUNTY OF LOS ANGELES, CALIFORNIA
 APPROVED, JOHN A. LAMBE, COUNTY ENGINEER
 APPROVED, *[Signature]* CHIEF ENGINEER
 CO. SEAL, REG. NO. 5
 BY: *[Signature]* ASSISTANT SANITATION ENGINEER
 BY: *[Signature]* OFFICE ENGINEER
 CHECKED BY: *[Signature]* 10-9-59
 OFFICE OF COUNTY ENGINEER, INC. C. E. NO. 9406



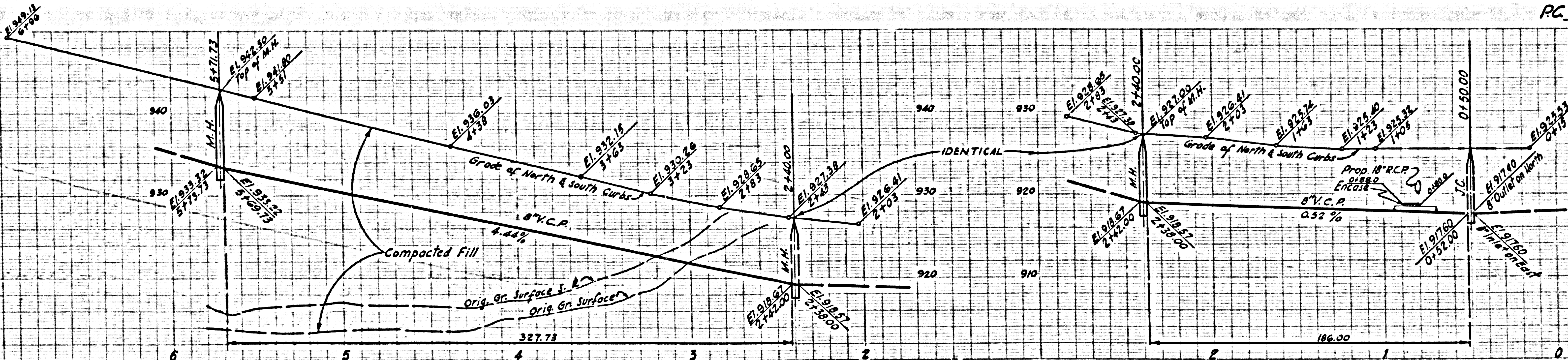
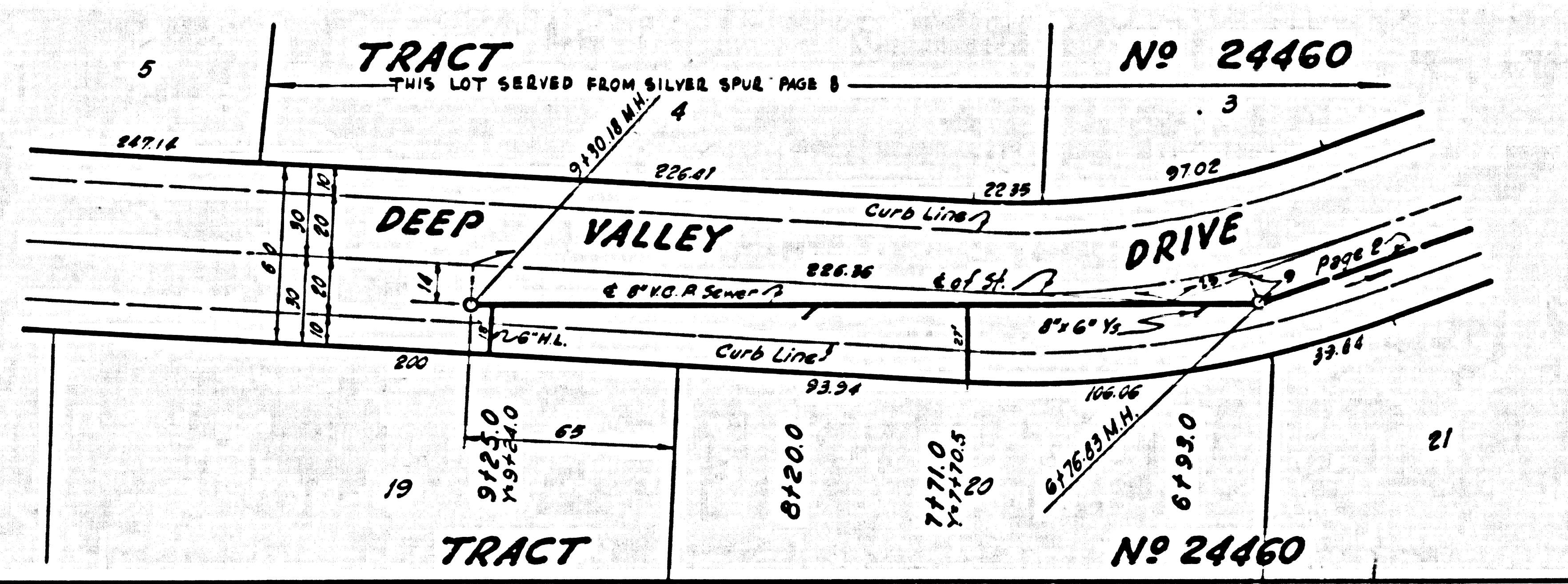
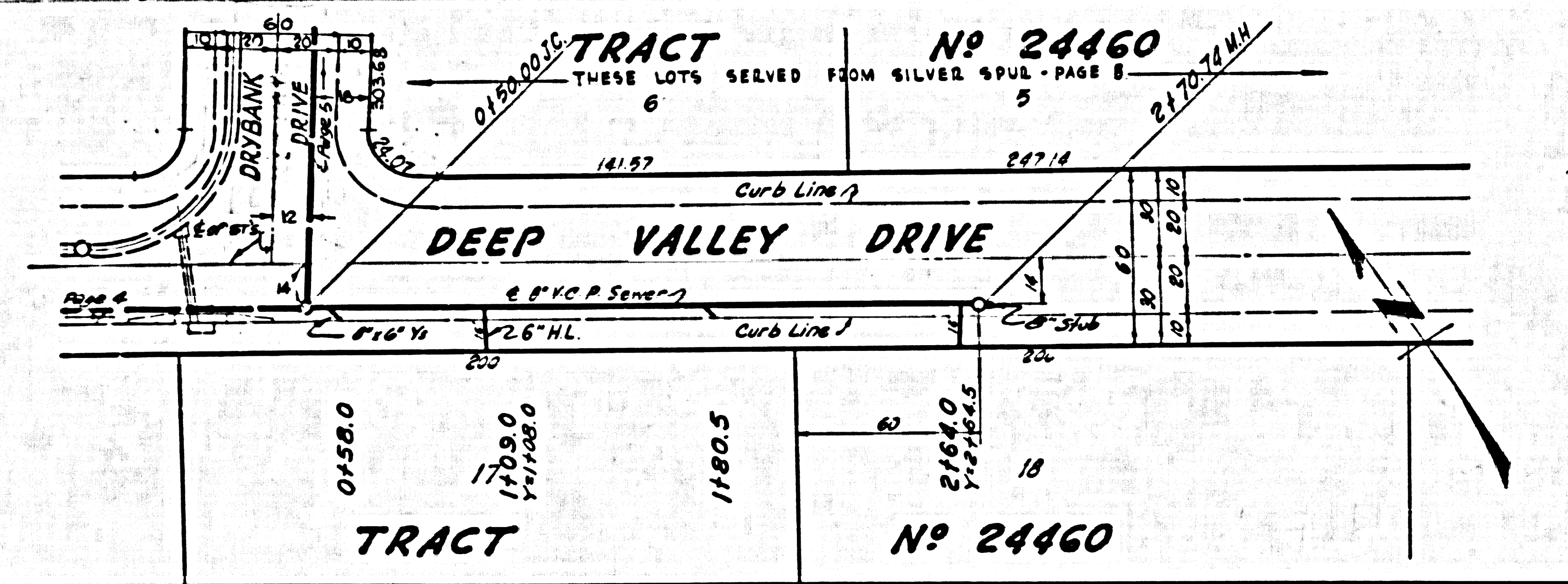
P.C. 5256 PAGE 2
 "DOUBLE SCALE"
 NO CHARGE FOR
 CONNECTIONS

(28,963)

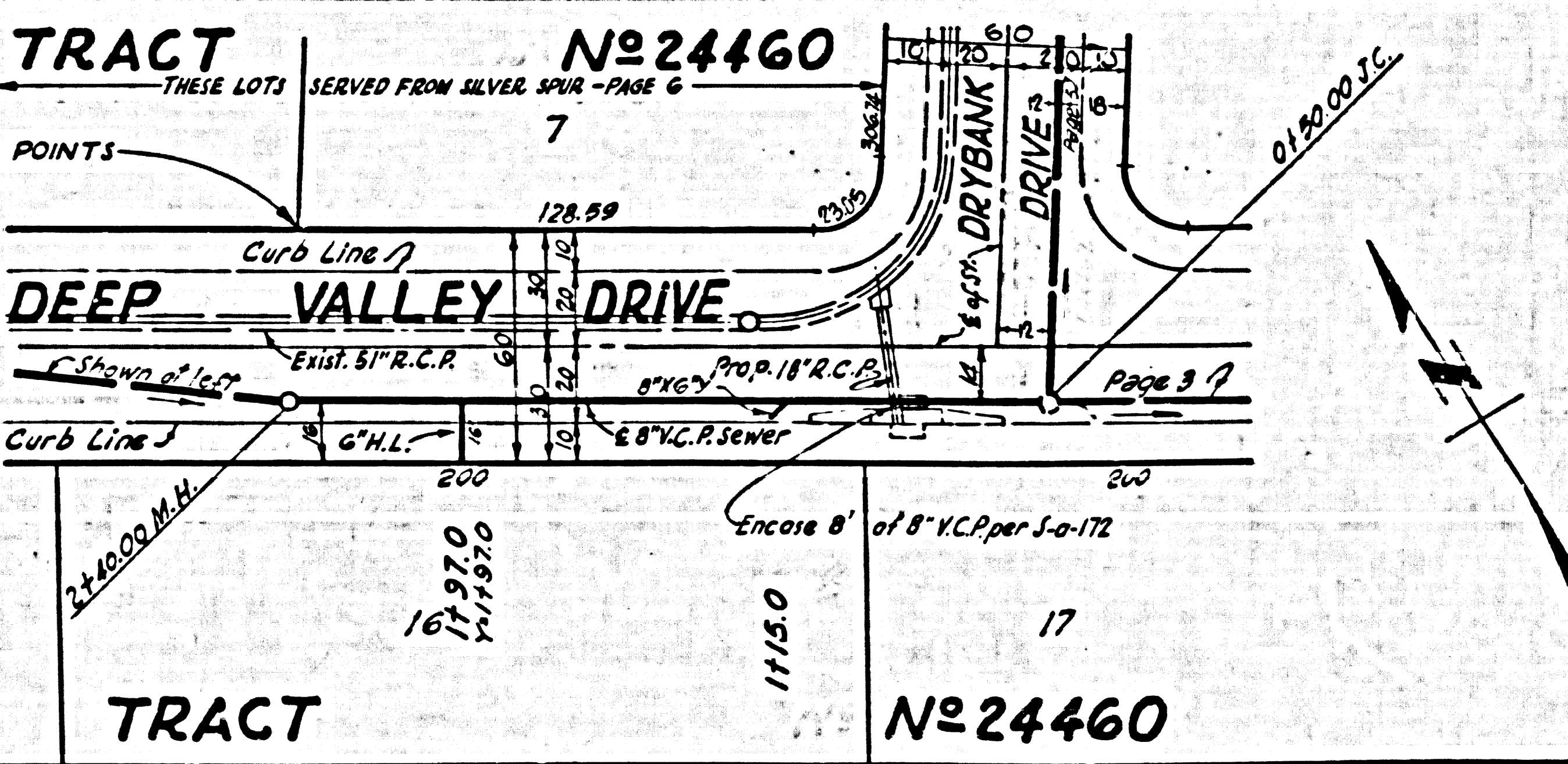
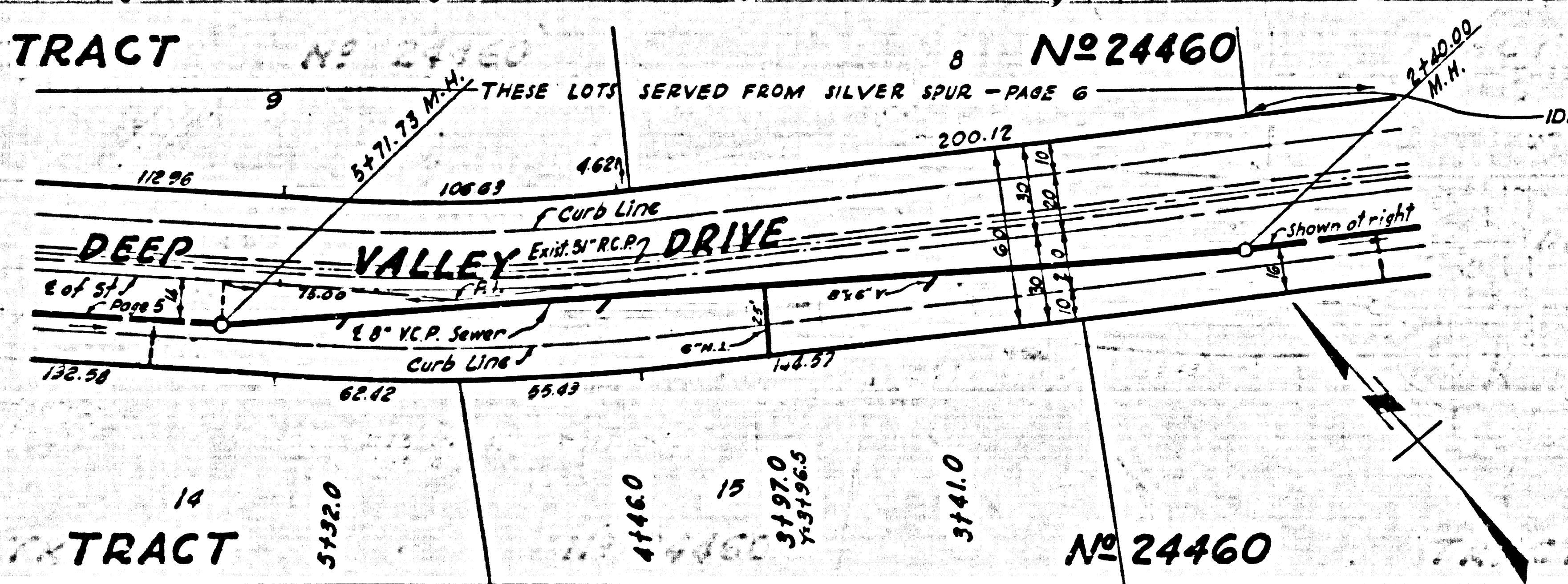
2910
 BC 252C
 TRACT No 5460

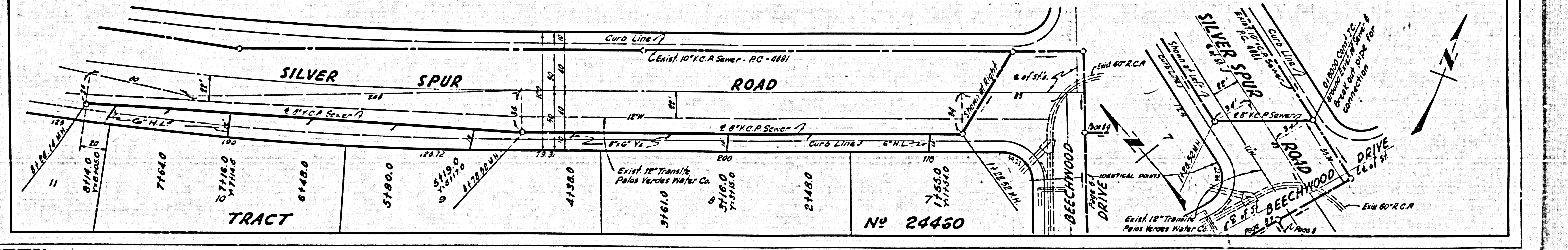
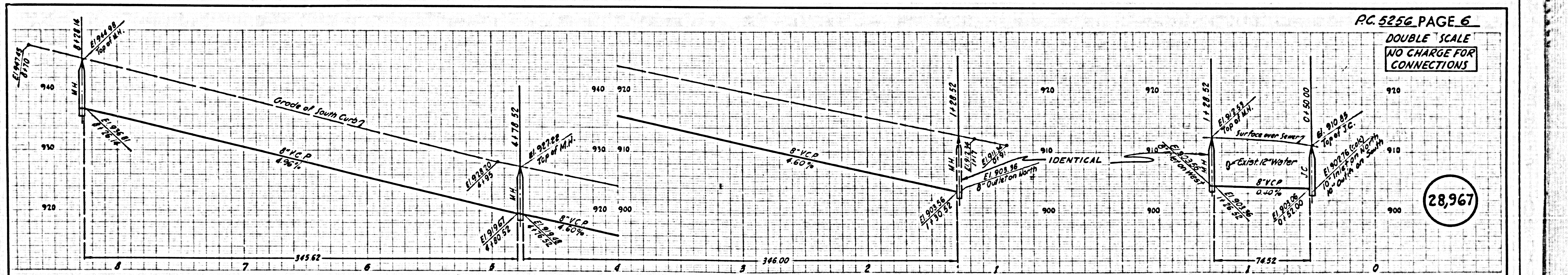
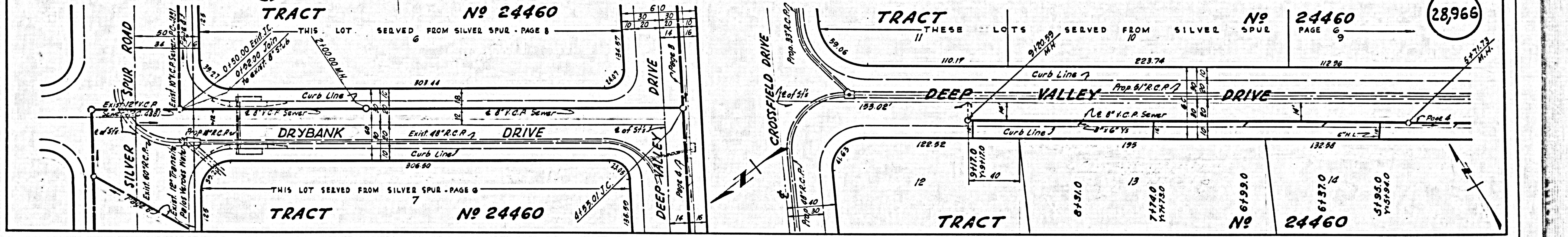
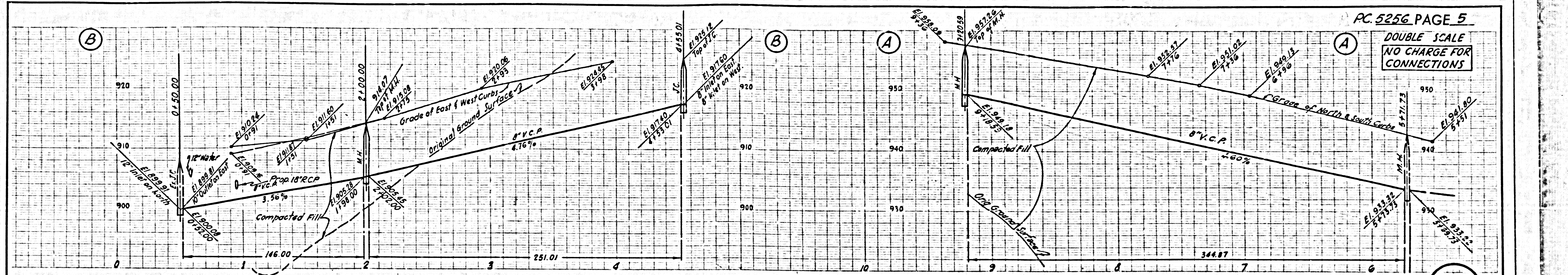


28,964

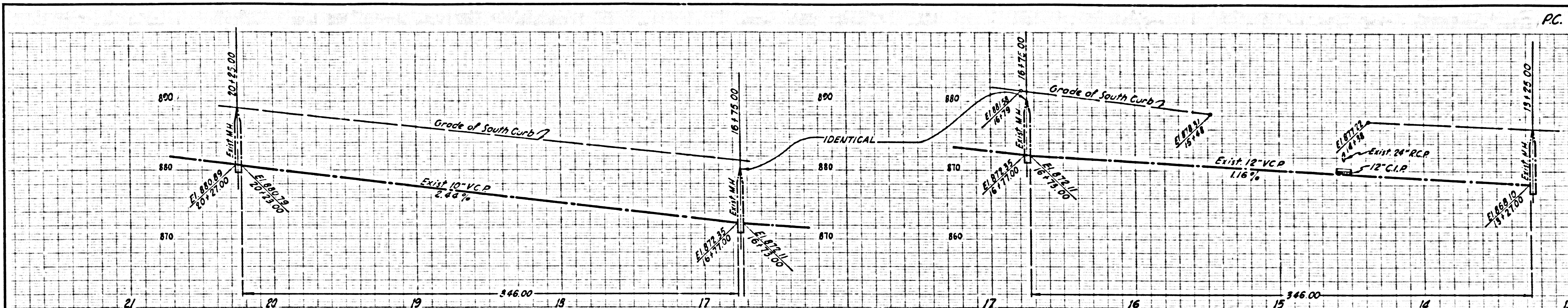


28,965

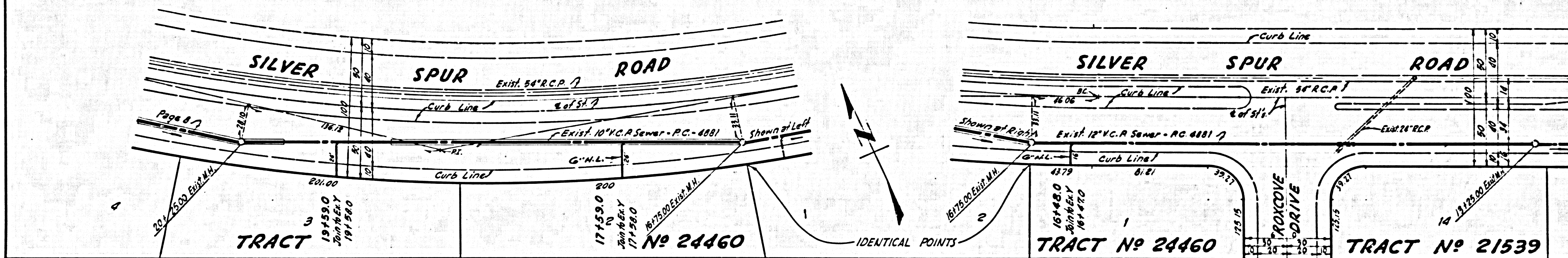




DOUBLE SCALE
NO CHARGE FOR
CONNECTIONS



28,968

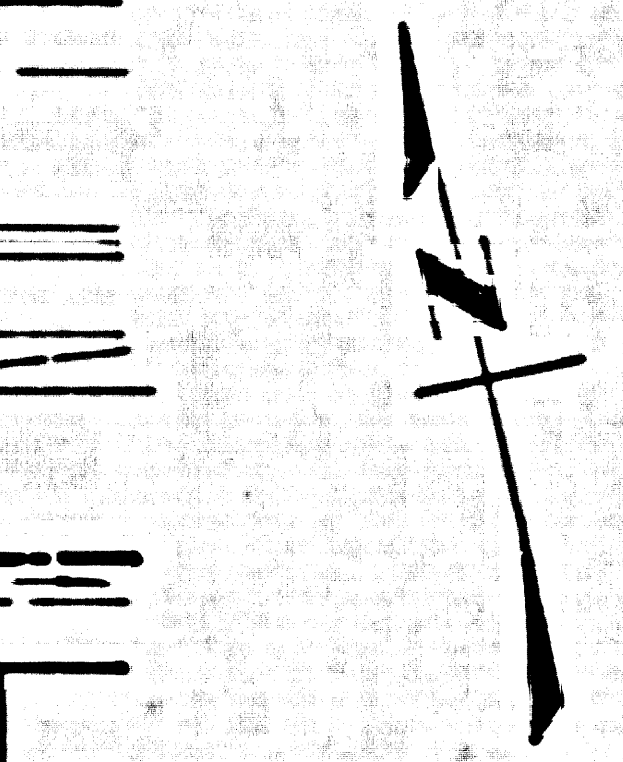


TRACT

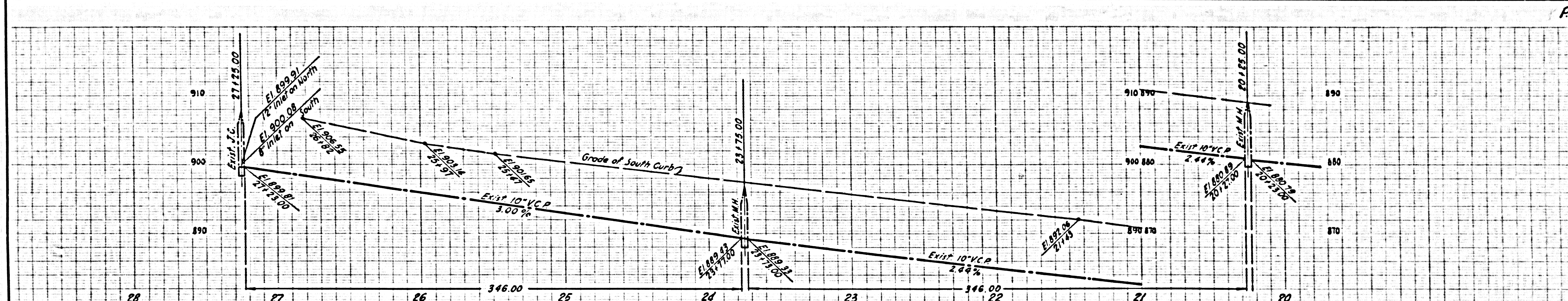
TRACT No 24460

TRACT No 24460

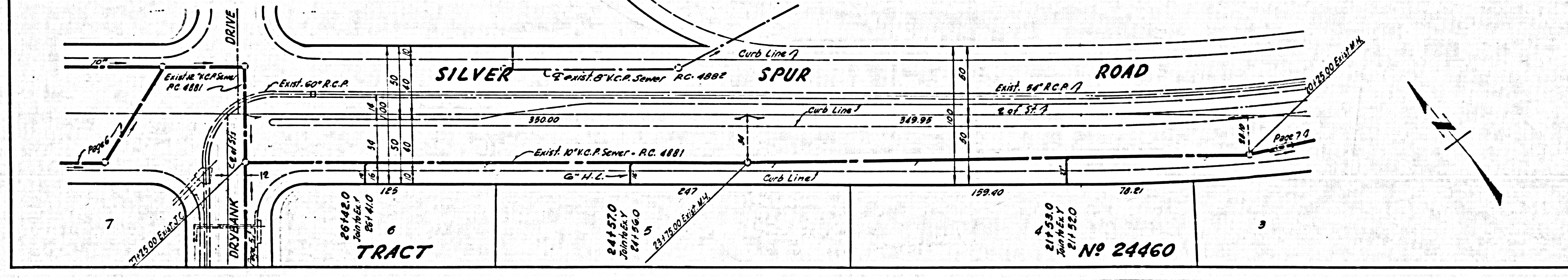
TRACT No 21539



DOUBLE SCALE
NO CHARGE FOR
CONNECTIONS



28,969



TRACT

TRACT No 24460

