

BENCH MARK  
C.S.B.M. - U.S.C. & G.S. Std. Dec. Stamped & - 706-1046  
Set flush with ground 43.2' North of & of Parlor Verdes  
Drive North, 47.4' East of & of Normandie Avenue  
Elev. 355.518'

LOMITA BLDG. DIST. NO. 7.1

PROFILE ALIGNMENT AND GRADE OF P.C. 5260  
SANITARY SEWERS PAGE 1

TO BE CONSTRUCTED IN  
TRACT No 24530  
AND OTHER RIGHTS OF WAY

PRIVATE CONTRACT NO. 5260

W.S. 27  
2 SHEETS; 4 PAGES

SCALE: VERT. 1"=4' APRIL, 1960

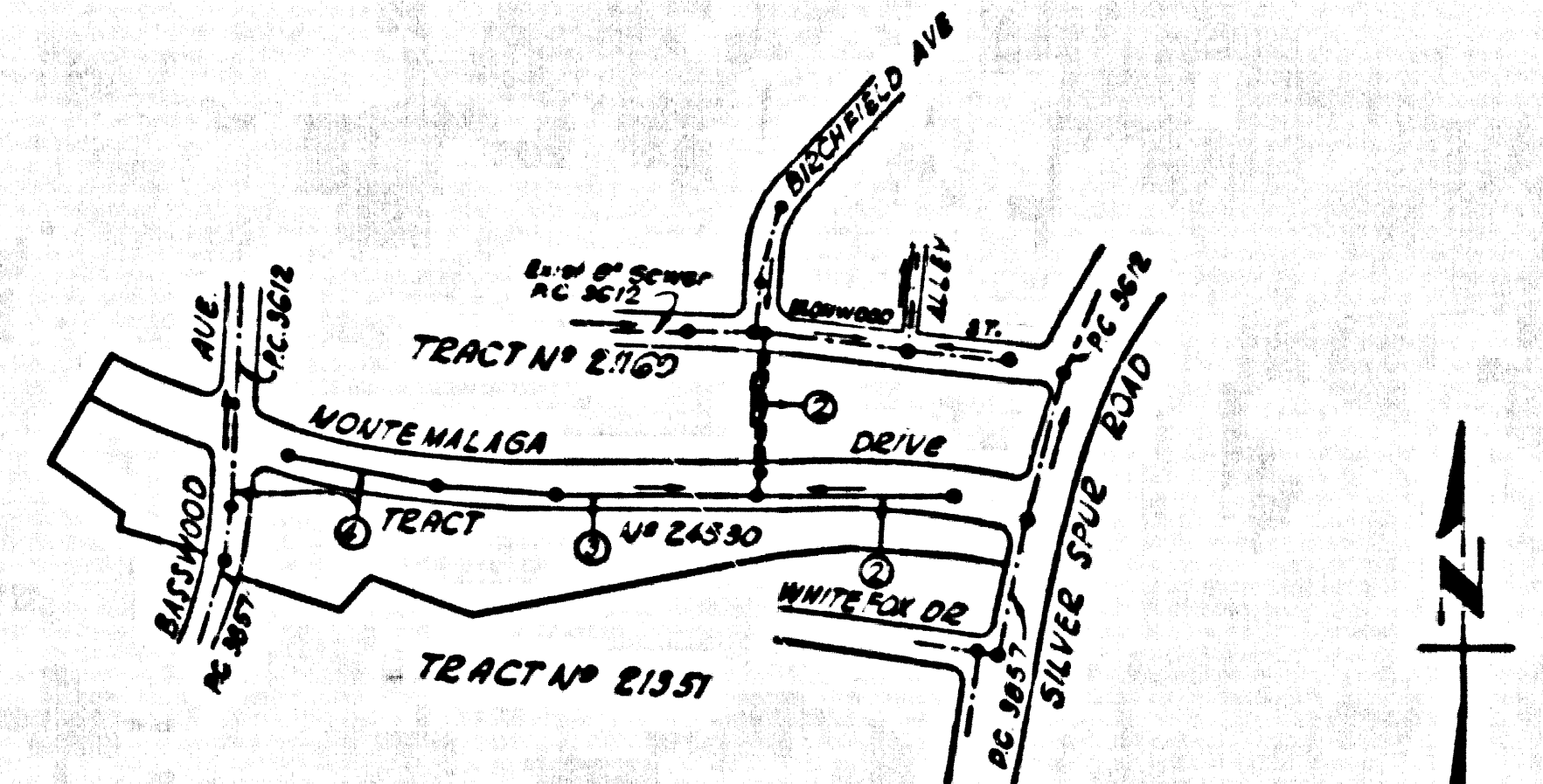
PREPARED IN THE OFFICES OF  
ENGINEERING SERVICE CORPORATION

29,536

BY: *C. J. Paine*  
REG. C. E. NO. 3234

FOR LEGEND SEE PLAN NO. S-A-64

- 1. PROVIDE STAKES ON THE PROPERTY LINE OR PROPERTY LINES PRODUCED AT RIGHT ANGLES TO THE SEWER LINE AT THE CENTER LINE OF EACH MANHOLE.
- 2. NO REPRESENTATIVE OF THE COUNTY ENGINEER WILL SURVEY OR LAY OUT ANY PORTION OF THE WORK.
- 3. THE OWNER OR HIS AUTHORIZED REPRESENTATIVE SHALL FURNISH THE COUNTY ENGINEER WITH GRADE SHEETS AND STATIONING FOR ALL HOUSE LATERALS AND Y BRANCHES AND SHALL PROVIDE STAKES FOR THEM AT THEIR PROPER LOCATIONS WITH STATIONING PLAINLY MARKED. ANY CHANGE IN LOCATION SHALL BE REQUESTED IN WRITING BY THE OWNER OR HIS REPRESENTATIVE.
- 4. THE PRIVATE ENGINEER SHALL FURNISH THE HOUSE LATERAL DEPTH AT THE PROPERTY LINE BELOW THE TOP OF CURB ELEVATION FOR EACH HOUSE LATERAL ON THE GRADE SHEET.
- 5. NO REVISIONS SHALL BE MADE IN THESE PLANS WITHOUT THE APPROVAL OF THE COUNTY ENGINEER.
- 6. USE STANDARD MANHOLE FRAMES AND COVERS, S-117, EXCEPT AS NOTED.
- 7. USE STANDARD STRENGTH PIPE EXCEPT AS NOTED.
- 8. USE CEMENT MORTAR OR "WEDGE-LOCK" OR "SPEED-SEAL" FOR ALL V.C.P. JOINTS PER SPEC. SECS. 36 & 40.
- 9. RESURFACE ALL TRENCH WITHIN PAVED AREA TO MEET L.A. COUNTY ROAD DEPT. OR CALIF. STATE HIGHWAY REQUIREMENTS IN ACCORDANCE WITH PERMITS.
- 10. ENCASE FOUR FEET OF SEWER AT POINTS OF INTERFERENCE WITH POLES, CASE NO. S-172.
- 11. HOUSE LATERALS TO BE CONSTRUCTED WITH INVERTS AT PROPERTY LINE . . . FEET BELOW CURB GRADE EXCEPT AS NOTED.
- 12. ALL STRUCTURES SHALL BE THICK SEWER STRUCTURES, S-104, EXCEPT AS NOTED.
- 13. FOR ALLOWABLE LEAKAGE TEST USE FORMULA "NO. 1", SPEC. SEC. 34.
- 14. MANHOLE TOPS IN UNIMPROVED RIGHTS-OF-WAY TO BE SIX INCHES ABOVE FINISHED GRADE.
- 15. THE CONTRACTOR SHALL NOTIFY THE CONSTRUCTION & BROAD BEAM DIVISION BY TELEPHONE, MADISON 9-0727, EXT. 242, AT LEAST TWENTY-FOUR HOURS BEFORE STARTING ANY WORK UNDER THIS CONTRACT.
- 16. STANDARD SPECIFICATIONS DATED JAN. 1, 1960 APPLY IN THE CONSTRUCTION OF THIS PROJECT.



INDEX MAP  
TRACT No 24530  
SCALE 1"=400'  
P.C. 5260

NO CHARGE FOR CONNECTIONS  
*Arthur B. Ready*

ENGINEERING SERVICE CORPORATION  
1127 W. WASHINGTON BLVD.  
LOS ANGELES 15, CALIF. RI. 9-7281

REVISIONS					

TRACED BY: *C.M.*  
DESIG'D BY: *COM*  
CK'D BY:  
SUBMITTED: *7/2/60*

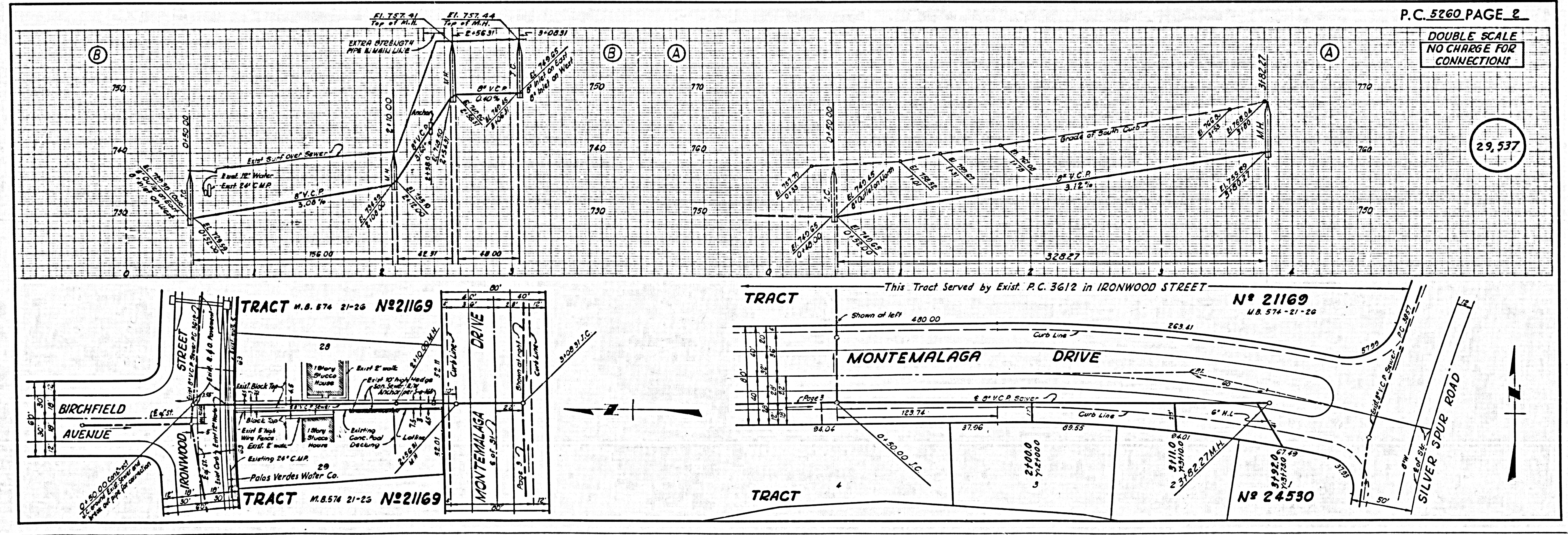
SUB STRUCTURES OK'D

W. O. NO.	DWG. NO.	DATE	SCALE	L.B.	F.B.
6681-128		APRIL, 1960	AS NOTED	LOOSE	30/27

NOTE:  
GRADES TO WHICH THIS IMPROVEMENT IS TO BE CONSTRUCTED ARE SHOWN ON PLANS AND PROFILES. GRADE POINTS FOR TOP OF CURB, CENTER LINE OF STREETS, OR CENTER LINE OF ALLEYS ARE SHOWN BY CIRCLES ON PROFILES. AT ALL POINTS BETWEEN DESIGNATED POINTS THE GRADE SHALL BE ESTABLISHED SO AS TO CONFORM TO A STRAIGHT LINE DRAWN BETWEEN SAID DESIGNATED POINTS.  
ELEVATIONS ARE IN FEET ABOVE U.S.C. & G.S. SEA LEVEL DATUM OF 1929.  
THIS DRAWING AND THE DATA HEREON ARE HEREBY MADE A PART OF THE SPECIFICATIONS.  
WORK SHALL BE CONSTRUCTED ACCORDING TO SPECIFICATIONS ON FILE IN THE OFFICE OF THE COUNTY ENGINEER AND SHALL BE PROSECUTED ONLY IN THE PRESENCE OF THE COUNTY ENGINEER.  
BEFORE WORK CAN BE STARTED, THE CONTRACTOR MUST OBTAIN A PERMIT TO EXCAVATE IN COUNTY STREETS FROM THE L.A. COUNTY ROAD DEPT., DISTRICT OFFICE NO. 2, . . . AND PAY A FEE 707 . . . THE COUNTY ENGINEER'S ROOM 204 FARM AMERICAN BUILDING, 222 SO BROADWAY SURVEYOR TO COVER THE COST OF CONSTRUCTION INSPECTION AND SECTION PLANS.  
APPROVAL OF THIS PLAN BY THE COUNTY OF LOS ANGELES DOES NOT CONSTITUTE A REPRESENTATION AS TO THE ACCURACY OF THE LOCATION OF OR THE EXISTENCE OR NON-EXISTENCE OF ANY UNDERGROUND UTILITY PIPE, OR STRUCTURE WITHIN THE LIMITS OF THIS PROJECT. THIS NOTE APPLIES TO ALL PAGES.  
IF WORK IS TO BE DONE ON A STATE HIGHWAY, A PERMIT MUST BE OBTAINED FROM THE STATE OF CALIFORNIA, DIVISION OF HIGHWAYS, 128 SOUTH SPRING STREET.

COUNTY OF LOS ANGELES, CALIFORNIA

APPROVED, JOHN A. LAMBE, COUNTY ENGINEER APPROVED, C. E. COMPTON, CHIEF ENGINEER  
BY: *C. E. Paine* ASST. SANITATION ENGINEER BY: *M. J. Paine* OFFICE ENGINEER  
CHECKED BY: *M. J. Paine* 7-2-60 OFFICE OF COUNTY ENGINEER, REG. C. E. NO. 2446  
SUBMITTED: *Arthur B. Ready* PALOS VERDES-CENTINELA VALLEY REGIONAL ENGINEER

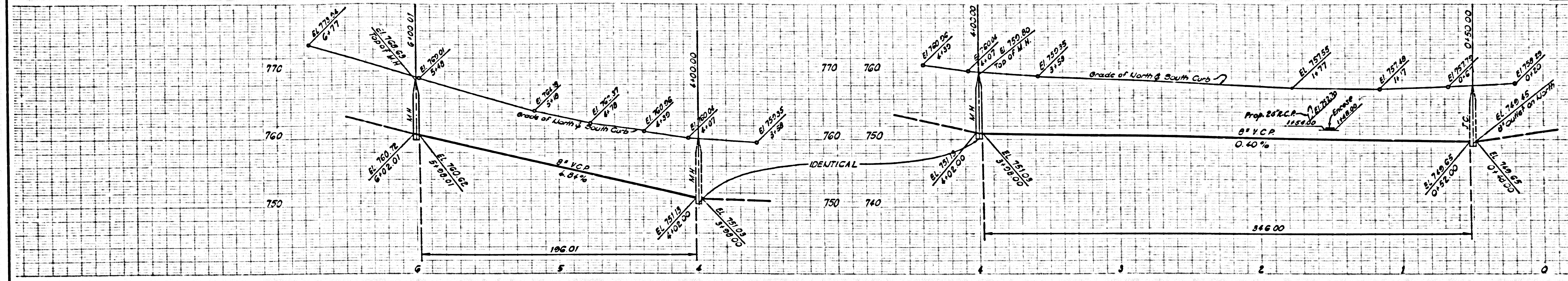


P.C. 5260 PAGE 2

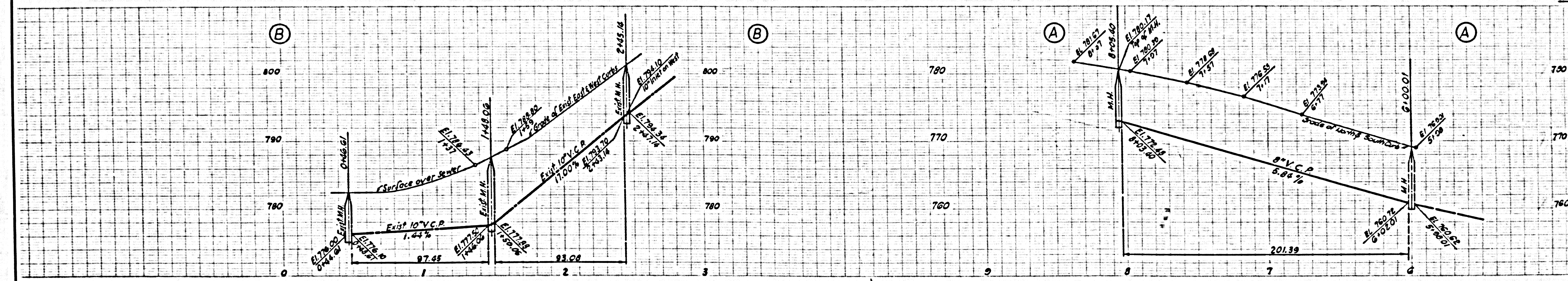
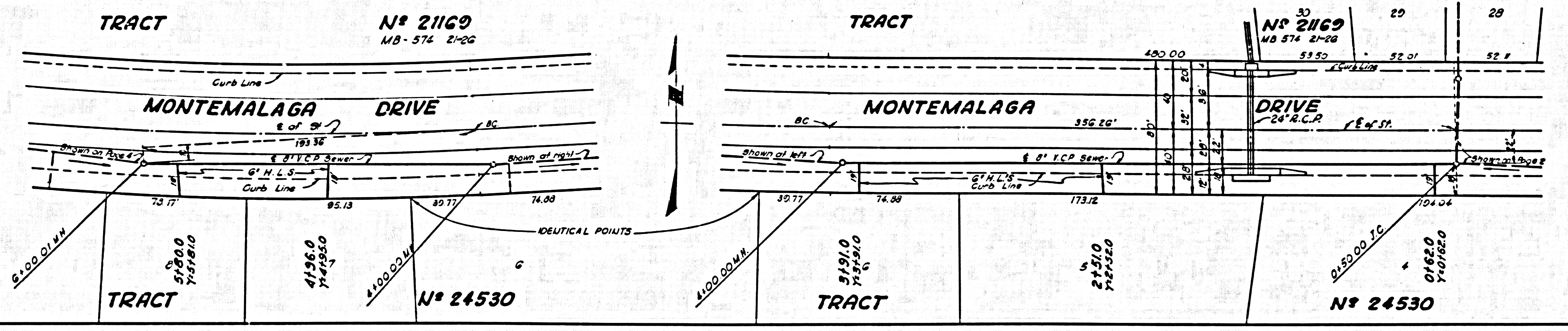
DOUBLE SCALE  
NO CHARGE FOR CONNECTIONS

29,537





29,538



29,539

