

WHITTIER BLDG. DIST. NO. 11

PROFILE ALIGNMENT AND GRADE OF
SANITARY SEWERS P.C. 5262
 TO BE CONSTRUCTED IN PAGE 1
 J.N. 0331.59

R/W N/O WASHINGTON BLVD.
PRIVATE CONTRACT NO. 5262

W.S. 37
 1 SHEETS, 2 PAGES
 SCALE: VERT. 1"=6' SEPT., 1959
 HORIZ. 1"=80'
 PREPARED IN THE OFFICES OF

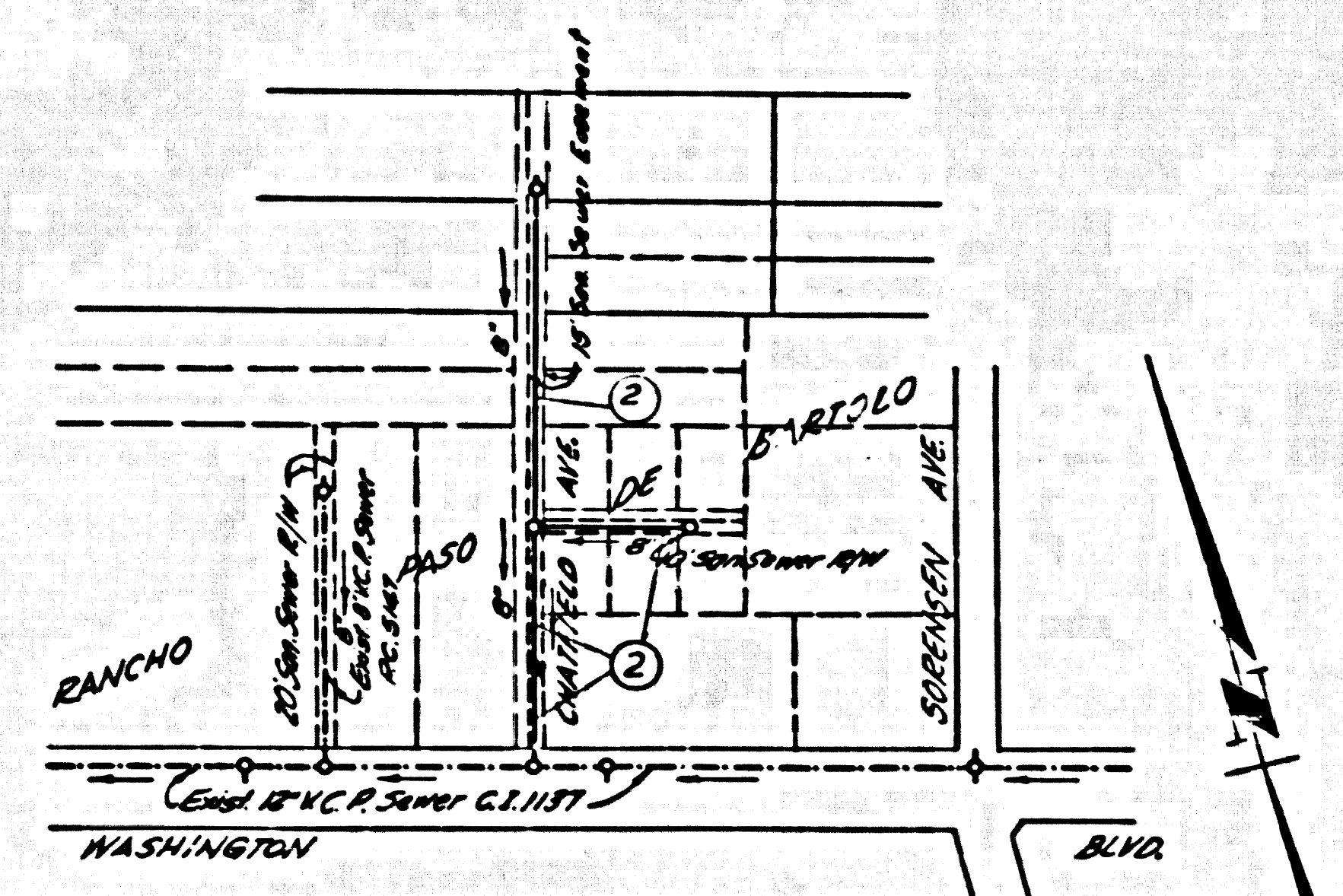
KEMMERER ENGR. CO. INCORP.
 Robert R. Flower
 REG. C. E. NO. 4268

FOR LEGEND SEE PLAN NO. S-A-64

NOTE:
 CONTRACT TO WHICH THIS IMPROVEMENT IS TO BE CONSTRUCTED ARE SHOWN ON PLANS AND PROFILES. GRADE POINTS FOR TOP OF CURB, CENTER LINE OF STREETS, OR CENTER LINE OF ALLEYS ARE SHOWN BY CIRCLES ON PROFILES AT ALL POINTS BETWEEN DESIGNATED POINTS THE GRADE SHALL BE ESTABLISHED SO AS TO CONFORM TO A STRAIGHT LINE DRAWN BETWEEN SAID DESIGNATED POINTS.
 ELEVATIONS ARE IN FEET ABOVE U.S.C. & G.S. MEAN SEA LEVEL, UNLESS OTHERWISE SPECIFIED.
 THIS DRAWING AND THE DATA HEREON ARE HEREBY MADE A PART OF THE SPECIFICATIONS.
 WORK SHALL BE CONSTRUCTED ACCORDING TO SPECIFICATIONS ON FILE IN THE OFFICE OF THE COUNTY ENGINEER AND SHALL BE PROSECUTED ONLY IN THE PRESENCE OF THE COUNTY ENGINEER.
 BEFORE WORK CAN BE STARTED, THE CONTRACTOR MUST OBTAIN A PERMIT TO EXCAVATE IN COUNTY STREETS FROM THE COUNTY ROAD DEPT., 257 1/2 S. W. 4th ST. WITH THE COUNTY ENGINEER, BOOKS AND MAPS AMERICAN STANDARD, 232 SO. INDEPENDENT AVENUE TO COVER THE COST OF CONSTRUCTION INSPECTION AND RECORD PLANS.
 APPROVAL OF THIS PLAN BY THE COUNTY OF LOS ANGELES DOES NOT CONSTITUTE A REPRESENTATION AS TO THE ACCURACY OF THE LOCATION OR OF THE EXISTENCE OR NON-EXISTENCE OF ANY UNDERGROUND UTILITY PIPE, OR STRUCTURE WITHIN THE LIMITS OF THIS PROJECT. THIS NOTE APPLIES TO ALL PAGES.
 IF WORK IS TO BE DONE IN A STATE HIGHWAY, A PERMIT MUST BE OBTAINED FROM THE STATE OF CALIFORNIA, DIVISION OF HIGHWAYS, 130 SOUTH SPRING STREET.

COUNTY OF LOS ANGELES, CALIFORNIA
 APPROVED, JOHN A. LAMBE, COUNTY ENGINEER
 APPROVED, C.F. CAMPBELL, CHIEF ENGINEER
 BY: C.E. Priddy ASST. SANITATION ENGINEER
 BY: M. G. Matthews CHIEF ENGINEER
 CHECKED BY: 316 Under 4-22-60
 OFFICE OF COUNTY ENGINEER, REG. C. E. NO. 5406

SUBMITTED BY: John L. Esten 4-26-60
 LOS ANGELES REGIONAL ENGINEER REG. C. E. NO. 3871



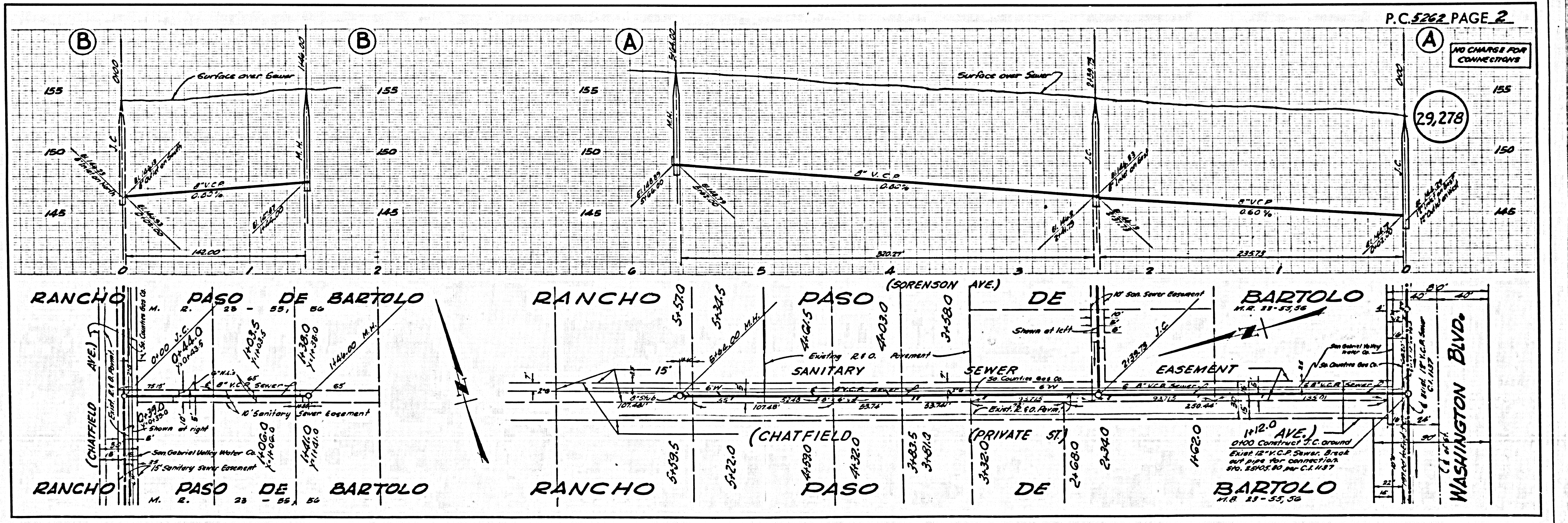
INDEX MAP
 P.C. 5262 SCALE 1"=300'
 J.N. 0331.59

NOTE !!
 KEMMERER ENGINEERING CO., INC. ASSUMES NO RESPONSIBILITY FOR THE LOCATION OF EXISTING UTILITY LINES. THOROUGH SEARCH HAS BEEN MADE WITH UTILITY COMPANIES KNOWN TO HAVE LINES IN THIS AREA AND WITH THE COUNTY OF LOS ANGELES, SUBSTRUCTURES DEPT. THE SEWER CONTRACTOR SHALL VERIFY LOCATIONS AND ELEVATIONS OF ALL UTILITY LINES.

B.M. 3X 3718 F.L. 112. N. 1/4 Sec. 5 & 6 Cont. Yolo Box Near E. B. of Building #11633 & 40' N. E Washington Blvd. (State Fe. Quad. 1953) Elevation 133.867.

- NOTES:**
- PROVIDE STAKES ON THE PROPERTY LINE OR PROPERTY LINES PRODUCED AT RIGHT ANGLES TO THE SEWER LINE AT THE CENTER LINE OF EACH MANHOLE.
 - NO REPRESENTATIVE OF THE COUNTY ENGINEER WILL SURVEY OR LAYOUT ANY PORTION OF THE WORK.
 - THE OWNER OR HIS AUTHORIZED REPRESENTATIVE SHALL FURNISH THE COUNTY ENGINEER WITH GRADE SHEETS AND STATION FOR ALL HOUSE LATERALS AND Y BRANCHES AND SHALL PROVIDE STAKES FOR THEM AT THEIR PROPER LOCATIONS WITH STATION. TWO PLAINLY MARKED. ANY CHANGE IN LOCATION SHALL BE REQUESTED IN WRITING BY THE OWNER OR HIS REPRESENTATIVE.
 - NO REVISIONS SHALL BE MADE IN THESE PLANS WITHOUT THE APPROVAL OF THE COUNTY ENGINEER.
 - USE STANDARD MANHOLE FRAMES AND COVERS, S-A-117.
 - USE STANDARD STRENGTH PIPE.
 - USE CHEMIST HORTON "HEDON-LOC" OR "SPEED-SEAL" FOR ALL WITHEPPED CLAY AND Joints, PER SPEC. SEC. 26 & 48.
 - RESURFACE ALL TRENCHES WITHIN PAVING AREA TO MEET L. A. COUNTY ROAD DEPT., OR CALIF. STATE HIGHWAY DEPT. REQUIREMENTS IN ACCORDANCE WITH PERMITS.
 - ENCASE FOUR FEET OF SEWERS AT POINTS OF INTERFERENCE WITH POLES, S-A-176 CASE 3E.
 - HOUSE LATERALS TO BE CONSTRUCTED WITH 12" RISE PER FOOT TO R/W LINE.
 - ALL STRUCTURES SHALL BE BRICK SEWER STRUCTURES, S-A-194.
 - FOR ALLOWABLE LEAKAGE TEST USE FORMULA NO. 1 SPEC. S, SEC. 54.
 - MANHOLE TOPS IN UNAPPROVED NIGHT-OF-WAY TO BE LEVEL WITH FINISHED GRADE.
 - THE CONTRACTOR SHALL NOTIFY THE CONSTRUCTION & STREETS DIVISION BY TELEPHONE, HOURS 8-4PM, EXT. 363, AT LEAST TWENTY-FOURS BEFORE STARTING ANY WORK UNDER THIS CONTRACT.
 - STANDARD SPECIFICATIONS DATED JAN. 5, 1950 APPLY IN THE CONSTRUCTION OF THIS PROJECT.

NO CHARGE FOR CONNECTIONS
 316 Under 4-22-60



P.C. 5262 PAGE 2

NO CHARGE FOR CONNECTIONS

29,278

112.0 AVE.
 0100 CONTRACT J.C. Ground
 EXIST 12" V.C.P. SEWER. Break
 out pipe for connection
 310. 25105.00 per C.I. 1187