

SAN DIMAS BLDG. DIST. NO. 10

PROFILE ALIGNMENT AND GRADE OF **P.C. 5265**
SANITARY SEWERS PAGE 1
 TO BE CONSTRUCTED IN **J.N. 0351.63**

TRACT No 25071
PRIVATE CONTRACT NO. 5265

W.S. 48
 4 SHEETS; 7 PAGES
 SCALE: VERT. 1"=4' HORIZ. 1"=40' **JANUARY, 1960**

29,030

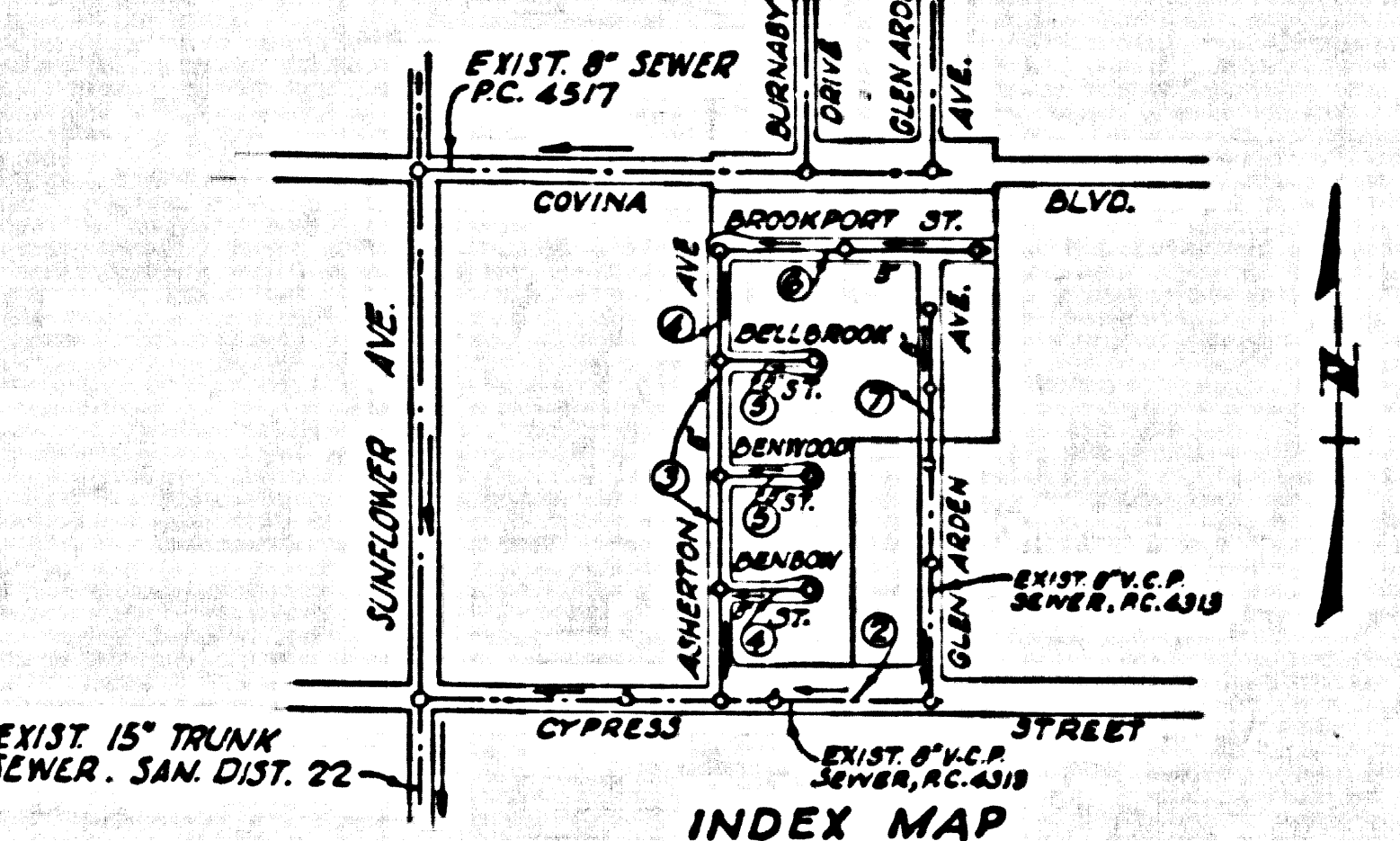
PREPARED IN THE OFFICES OF
RICHARD BROWN, JR.
 7632 COMFORTH AVENUE
 BUEN PARK, CALIF. LAWRENCE 2-2333
 BY: *Richard Brown, Jr.*
 REG. C. E. NO. 3333

FOR LEGEND SEE PLAN NO. S-A-44

BENCH MARK S.G. 50
 L. & T. in conc. wall 25' S. & Covina
 Boulevard 6' 25' W. & Sunflower Ave-
 nue (San Dimas 1955).
 Elevation 744.155

- NOTES:**
1. PROVIDE STAKES ON THE PROPERTY LINE OR PROPERTY LINES PRODUCED AT RIGHT ANGLES TO THE SEWER LINE AT THE CENTER LINE OF EACH MANHOLE.
 2. NO REPRESENTATIVE OF THE COUNTY ENGINEER WILL SURVEY OR LAY OUT ANY PORTION OF THE WORK.
 3. THE OWNER OR HIS AUTHORIZED REPRESENTATIVE SHALL FURNISH THE COUNTY ENGINEER WITH GRADE SHEETS AND STATIONING FOR ALL HOUSE LATERALS AND Y BRANCHES AND SHALL PROVIDE STAKES FOR THEM AT THEIR PROPER LOCATIONS WITH STATIONINGS PLAINLY MARKED. ANY CHANGE IN LOCATION SHALL BE REQUESTED IN WRITING BY THE OWNER OR HIS REPRESENTATIVE.
 4. THE PRIVATE ENGINEER SHALL FURNISH THE HOUSE LATERAL DEPTH AT THE PROPERTY LINE BELOW THE TOP OF CURB ELEVATION FOR EACH HOUSE LATERAL ON THE GRADE SHEET.
 5. NO REVISIONS SHALL BE MADE IN THESE PLANS WITHOUT THE APPROVAL OF THE COUNTY ENGINEER.
 6. USE STANDARD MANHOLE FRAMES AND COVERS, S-117.
 7. USE STANDARD STRENGTH PIPE.
 8. USE CEMENT MORTAR OR "WEDGE-LOCK" OR "SPREAD-SEAL" FOR ALL V.C.P. JOINTS "BY SPEC'S, SECS. 16 & 17.
 9. RESURFACE ALL TRENCH WITHIN PAVED AREA TO MEET L.A. COUNTY ROAD DEPT. OR CALIF. STATE HIGHWAY REQUIREMENTS IN ACCORDANCE WITH PERMITS.
 10. ENCASE FOUR FEET OF SEWER AT POINTS OF INTERFERENCE WITH POLES, CASE III, S-117.
 11. HOUSE LATERALS TO BE CONSTRUCTED WITH INVERTS AT PROPERTY LINE 6 FEET BELOW CURB GRADE EXCEPT AS NOTED.
 12. ALL STRUCTURES SHALL BE BRICK SEWER STRUCTURES, S-114.
 13. FOR ALLOWABLE LEAKAGE TEST USE FORMULA NO. 1, SPEC'S, SEC. 14.
 14. MANHOLE TOPS IN UNIMPROVED RIGHTS-OF-WAY TO BE SIX INCHES ABOVE FINISHED GRADE.
 15. THE CONTRACTOR SHALL NOTIFY THE CONSTRUCTION & STORM DRAIN DIVISION BY TELEPHONE, MADISON 5-4747, EXT. 142, AT LEAST TWENTY-FOUR HOURS BEFORE STARTING ANY WORK UNDER THIS CONTRACT.
 16. STANDARD SPECIFICATIONS DATED JANUARY 1, 1960 APPLY IN THE CONSTRUCTION OF THIS PROJECT.

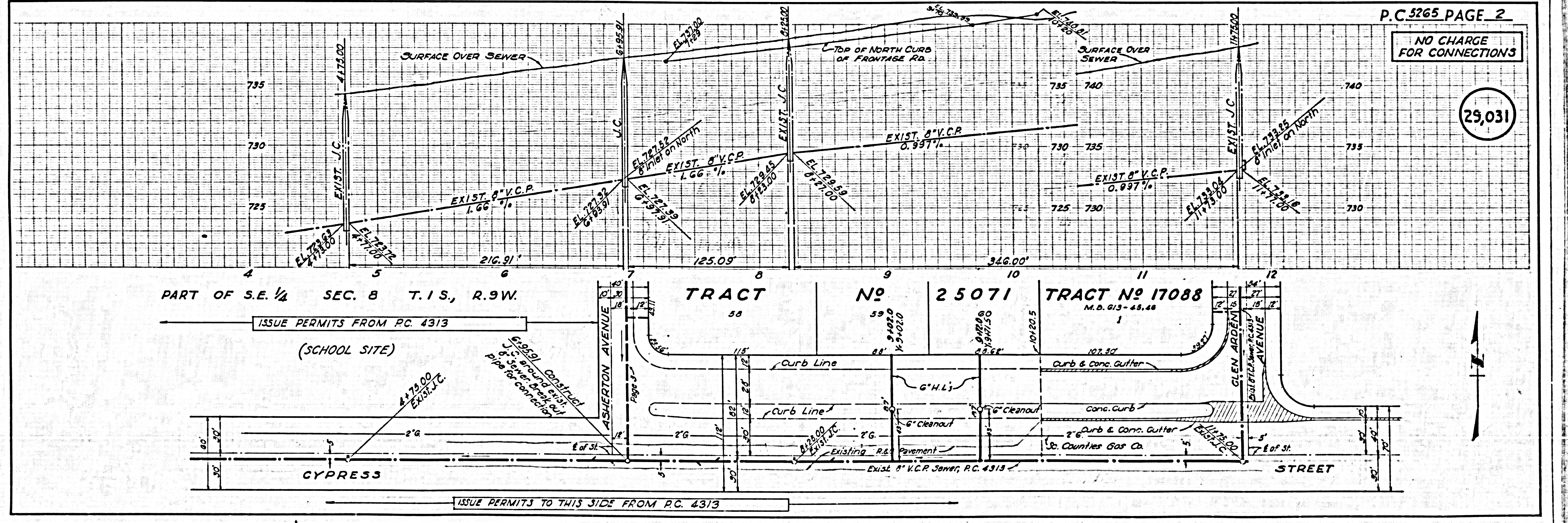
COLLECT CHARGES AS INDICATED.
 T.W. McSwain 3-11-60



NOTE:
 GRADES TO WHICH THIS IMPROVEMENT IS TO BE CONSTRUCTED ARE SHOWN ON PLANS AND PROFILES. GRADE POINTS FOR TOP OF CURB, CENTER LINE OF STREETS, OR CENTER LINE OF ALLEYS ARE SHOWN BY CIRCLES ON PROFILES. AT ALL POINTS BETWEEN DESIGNATED POINTS THE GRADE SHALL BE ESTABLISHED SO AS TO CONFORM TO A STRAIGHT LINE DRAWN BETWEEN SAID DESIGNATED POINTS.
 ELEVATIONS ARE IN FEET ABOVE U.S.C. & G.S. SEA LEVEL DATUM OF 1929.
 THIS DRAWING AND THE DATA HEREON ARE HEREBY MADE A PART OF THE SPECIFICATIONS.
 WORK SHALL BE CONSTRUCTED ACCORDING TO SPECIFICATIONS ON FILE IN THE OFFICE OF THE COUNTY ENGINEER AND SHALL BE PROSECUTED ONLY IN THE PRESENCE OF THE COUNTY ENGINEER.
 BEFORE WORK CAN BE STARTED, THE CONTRACTOR MUST OBTAIN A PERMIT TO EXCAVATE IN COUNTY STREETS FROM THE L. A. COUNTY ROAD DEPT., DISTRICT OFFICE NO. 10, AND PAY A FEE TO THE COUNTY ENGINEER ROOM, 535 PINE AVENUE IN BUILDING, 343 SO. BROADWAY SUFFICIENT TO COVER THE COST OF CONSTRUCTION INSPECTION AND RECORD PLANS.
 APPROVAL OF THIS PLAN BY THE COUNTY OF LOS ANGELES DOES NOT CONSTITUTE A REPRESENTATION AS TO THE ACCURACY OF THE LOCATION OR THE EXISTENCE OR NON-EXISTENCE OF ANY UNDERGROUND UTILITY PIPE, OR STRUCTURE WITHIN THE LIMITS OF THIS PROJECT. THE NOTE APPLIED TO ALL PAGES.
 NO WORK IS TO BE DONE IN A STATE HIGHWAY. A PERMIT MUST BE OBTAINED FROM THE STATE OF CALIFORNIA, DIVISION OF HIGHWAYS, 120 SOUTH SPRING STREET.

COUNTY OF LOS ANGELES, CALIFORNIA
 APPROVED, JOHN A. LAMBIE, COUNTY ENGINEER APPROVED, C.R. COMPTON, CHIEF ENGINEER
 C.E. No. 22
 BY: *C.R. Compton* BY: *C.R. Compton*
 CHIEF SANITATION ENGINEER CHIEF SANITATION ENGINEER
 CHECKED BY: *J.K. Under* 3-11-60
 OFFICE OF COUNTY ENGINEER, REG. C. E. NO. 9406

SUBMITTED: *W.C. Poindexter*
 SAN DIMAS REGIONAL ENGINEER



P.C. 5265 PAGE 2

NO CHARGE FOR CONNECTIONS

29,031

PART OF S.E. 1/4 SEC. 8 T.1 S., R.9 W.

ISSUE PERMITS FROM P.C. 4313

(SCHOOL SITE)

4170.00 EXIST. J.C.
 6.5' 8.5' 10.5' 12.5' 14.5' 16.5' 18.5' 20.5' 22.5' 24.5' 26.5' 28.5' 30.5' 32.5' 34.5' 36.5' 38.5' 40.5' 42.5' 44.5' 46.5' 48.5' 50.5' 52.5' 54.5' 56.5' 58.5' 60.5' 62.5' 64.5' 66.5' 68.5' 70.5' 72.5' 74.5' 76.5' 78.5' 80.5' 82.5' 84.5' 86.5' 88.5' 90.5' 92.5' 94.5' 96.5' 98.5' 100.5'

CYPRESS

ISSUE PERMITS TO THIS SIDE FROM P.C. 4313

TRACT No 25071

TRACT No 17088

M.D. 013-45.48

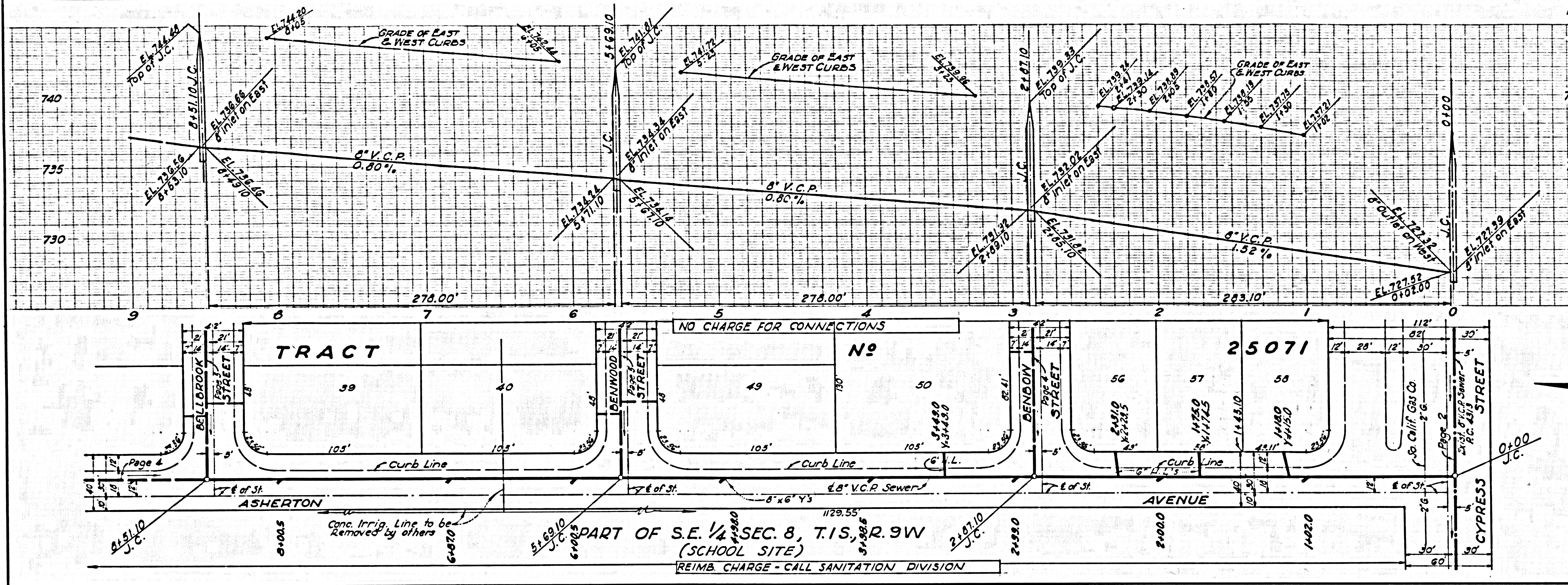
ASHERTON AVENUE

GLEN ARDEN AVENUE

STREET

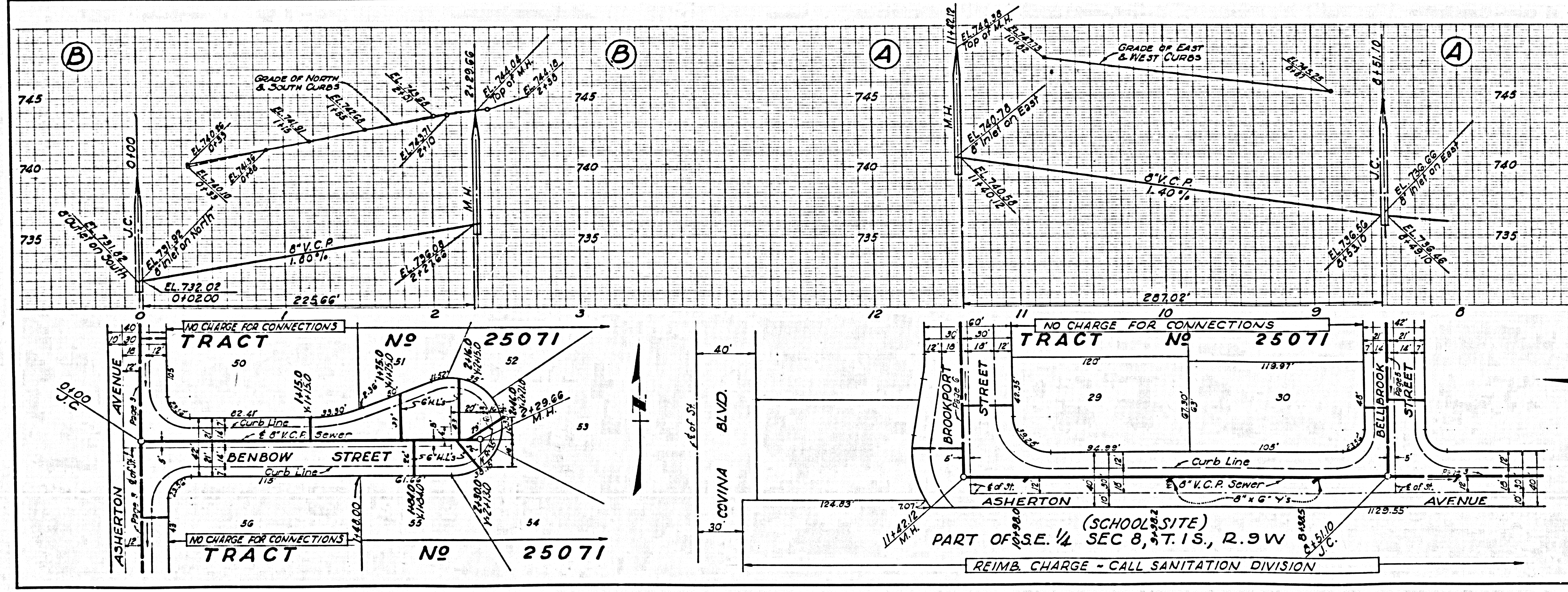
COLLECT CHARGES AS INDICATED

29,032



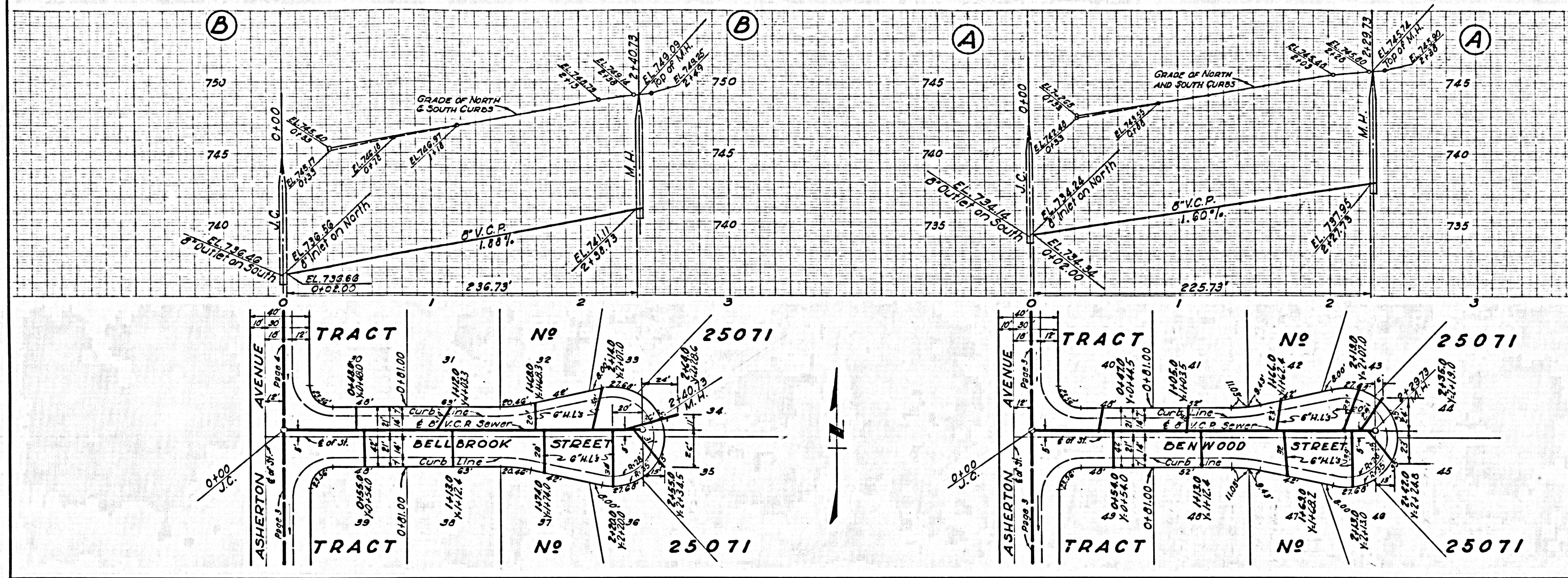
COLLECT CHARGES AS INDICATED

29,033



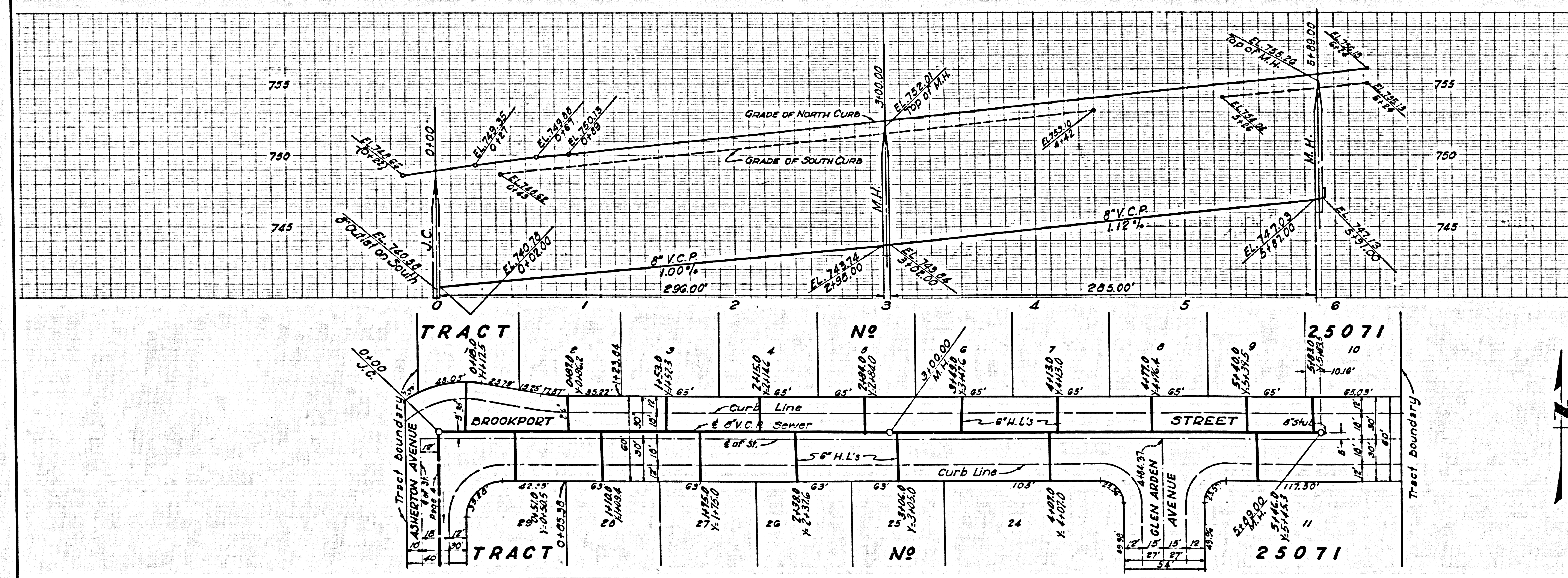
NO CHARGE FOR CONNECTIONS

29,034



NO CHARGE FOR CONNECTIONS

29,035



NO CHARGE FOR CONNECTIONS

29,036

