

WHITTIER BLDG. DIST. NO. 11

PROFILE ALIGNMENT AND GRADE OF P.C. 5266
SANITARY SEWERS PAGE 1
 TO BE CONSTRUCTED IN JN 0351.61

MYSTIC STREET R/W

PRIVATE CONTRACT NO. 5266
 JN 0351.61
 W.S. 34

1 SHEETS, 2 PAGES

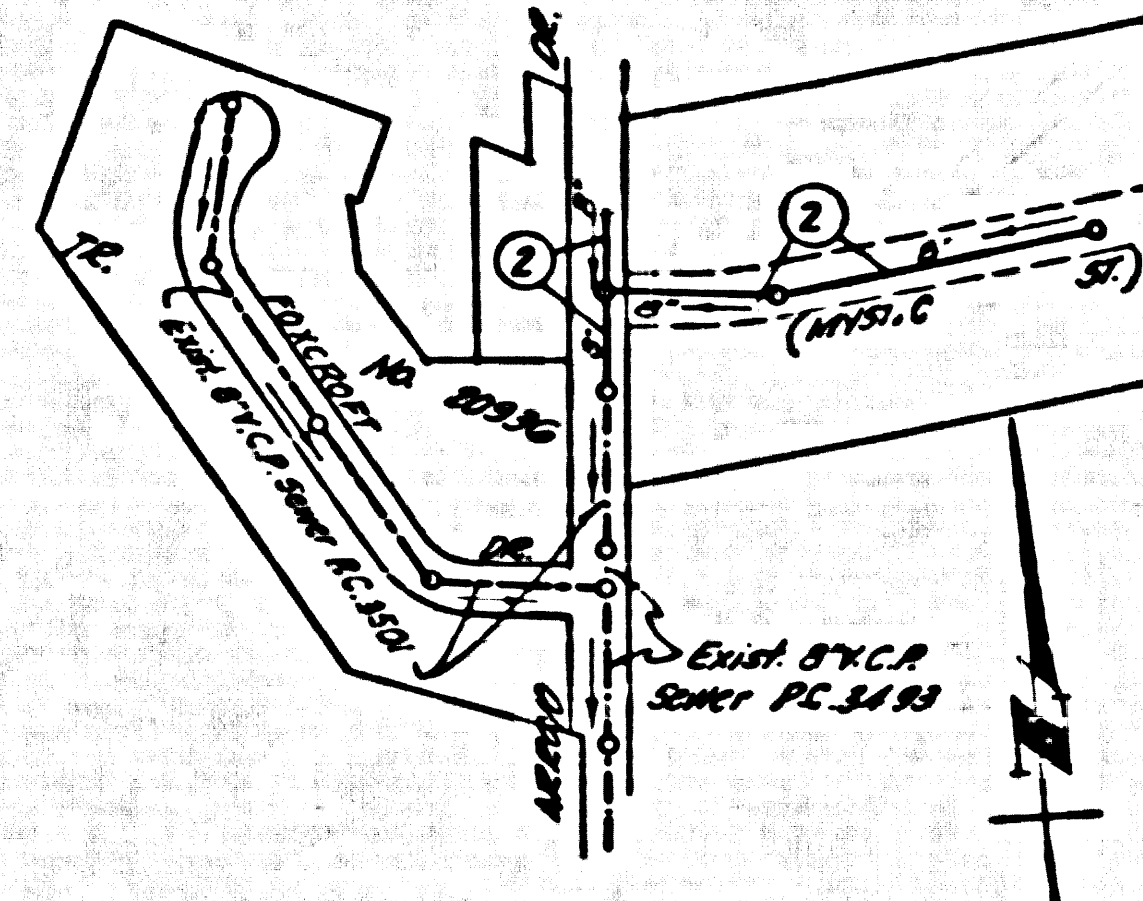
SCALE: VERT. 1"=6' HORIZ. 1"=30' JULY, 1959

PREPARED IN THE OFFICES OF

KEMMERER ENGR. CO. INC. (28,780)

Robert R. Long
 REG. C. E. NO. 1123

FOR LEGEND SEE PLAN NO. S-A-64



• INDEX MAP •
 SCALE: 1"=300' P.C. 5266
 JN 0351.61

B.M. 5X 1228 - L.S.T. ctr. of Conc. Headwall. So. end of Drain Pipe SS's No. 1 & Santa Fe 1/2 M. of Colima Rd. Elevation 196.665 (Whittier Quad-1953)

Note: Kemmerer Engr. Co. Inc. assumes no responsibility for the location of existing utility lines. A thorough search has been made with Utility Companies known to have lines in this area and with the Co. of L.A. Underground Sec. The sewer Contractor shall verify locations and elevations of all utility lines.

- NOTES:
- PROVIDE STAKES ON THE PROPERTY LINE OR PROPERTY LINES PRODUCED AT RIGHT ANGLES TO THE SEWER LINE AT THE CURB LINE OF EACH MANHOLE.
 - NO REPRESENTATIVE OF THE COUNTY ENGINEER WILL SURVEY OR LAYOUT ANY PORTION OF THE WORK.
 - THE OWNER OR HIS AUTHORIZED REPRESENTATIVE SHALL FURNISH THE COUNTY ENGINEER WITH GRADE SHEETS AND STATIONING FOR ALL HOUSE LATERALS AND Y BRANCHES AND SHALL PROVIDE STAKES FOR THEM AT THEIR PROPER LOCATIONS WITH STATIONING PLANNED MANHOLE. ANY CHANGE IN LOCATION SHALL BE REQUESTED BY WRITING BY THE OWNER OR HIS REPRESENTATIVE.
 - NO BYPASS SHALL BE MADE IN THESE PLANS WITHOUT THE APPROVAL OF THE COUNTY ENGINEER.
 - USE STANDARD MANHOLE FRAMES AND COVERS, S-A-117.
 - USE STANDARD STRENGTH PIPE EXCEPT AS NOTED.
 - USE CEMENT MORTAR "MUD-LOCK" JOINTS FOR ALL WHITTIER CLAY PIPE JOINTS, PER STATE S.P.C. 168.64.
 - RESURFACE ALL TRENCH WITHIN PAVED AREA TO MEET L.A. COUNTY ROAD DEPT. OR CALIF. STATE HIGHWAY DEPT. REQUIREMENTS IN ACCORDANCE WITH PERMITS.
 - INCASE FOUR FEET OF SEWER AT POINTS OF INTERFERENCE WITH POLES, S-A-172, CASE XX.
 - HOUSE LATERALS TO BE CONSTRUCTED WITH INVERTS AT PROPERTY LINE 6" FEET BELOW CURB GRADE EXCEPT AS NOTED.
 - ALL STRUCTURES SHALL BE BRICK SEWER STRUCTURES, S-A-114.
 - FOR ALLOWABLE LEAKAGE TEST USE FORMULA NO. 1 SPEC'S, SEC. 54.
 - MANHOLE TOPS IN UNIMPROVED RIGHTS-OF-WAY TO BE 6" ABOVE FINISHED GRADE.
 - THE PRIVATE ENGINEER IS TO FURNISH THE HOUSE LATERAL DEPTH AT THE PROPERTY LINE BELOW THE TOP OF CURB ELEVATION FOR EACH HOUSE LATERAL ON THE OLD SIDE STREET.
 - THE CONTRACTOR SHALL NOTIFY THE CONSTRUCTION AND STORM DRAIN DIVISION BY TELEPHONE, NUMBER 3-4717, CIVIL SEC. AT LEAST TWENTY FOUR HOURS BEFORE STARTING ANY WORK UNDER THIS CONTRACT.
 - STANDARD SPECIFICATIONS DATED JANUARY 1, 1958 APPLY IN THE CONSTRUCTION OF THIS PROJECT.

Revisions Removed 53 of 8" V.C.P. Sewer in Arroyo Dr. Plugged 8" V.C.P. at Sta. 19+00.00.
 Approved: John L. Lambie 2-14-60

NO CHARGE FOR CONNECTIONS
 S. J. Hickland 1-25-60

NOTES:

GRADES TO WHICH THE IMPROVEMENT IS TO BE CONSTRUCTED ARE SHOWN ON PLANS AND PROFILES. GRADE POINTS FOR TOP OF CURB, CENTER LINE OF STREET, OR CENTER LINE OF ALLEYS ARE SHOWN BY CIRCLES OR TRIANGLES AT ALL POINTS BETWEEN DESIGNATED POINTS THE GRADE SHALL BE ESTABLISHED SO AS TO CONFORM TO A STRAIGHT LINE DRAWN BETWEEN SAID DESIGNATED POINTS.

ELEVATIONS ARE IN FEET ABOVE U.S.C. & G.S. MEAN SEA LEVEL UNLESS OTHERWISE NOTED.

THE DRAWING AND THE DATA HEREON ARE HEREBY MADE A PART OF THE SPECIFICATIONS.

WORK SHALL BE CONSTRUCTED ACCORDING TO SPECIFICATIONS ON FILE IN THE OFFICE OF THE COUNTY ENGINEER AND SHALL BE PROSECUTED ONLY IN THE PRESENCE OF THE COUNTY ENGINEER.

BEFORE WORK CAN BE STARTED, THE CONTRACTOR MUST OBTAIN A PERMIT TO EXCAVATE IN COUNTY STREETS FROM THE L.A. COUNTY ROAD DEPT., 212 F. W. B. BLDG. WITHIN THE COUNTY ENGINEER, ROOM 104 FROM AMERICAN MANHOLE, 525 SO. BROADWAY SUFFICIENT TO COVER THE COST OF CONSTRUCTION INSPECTION AND RECORD PLANS.

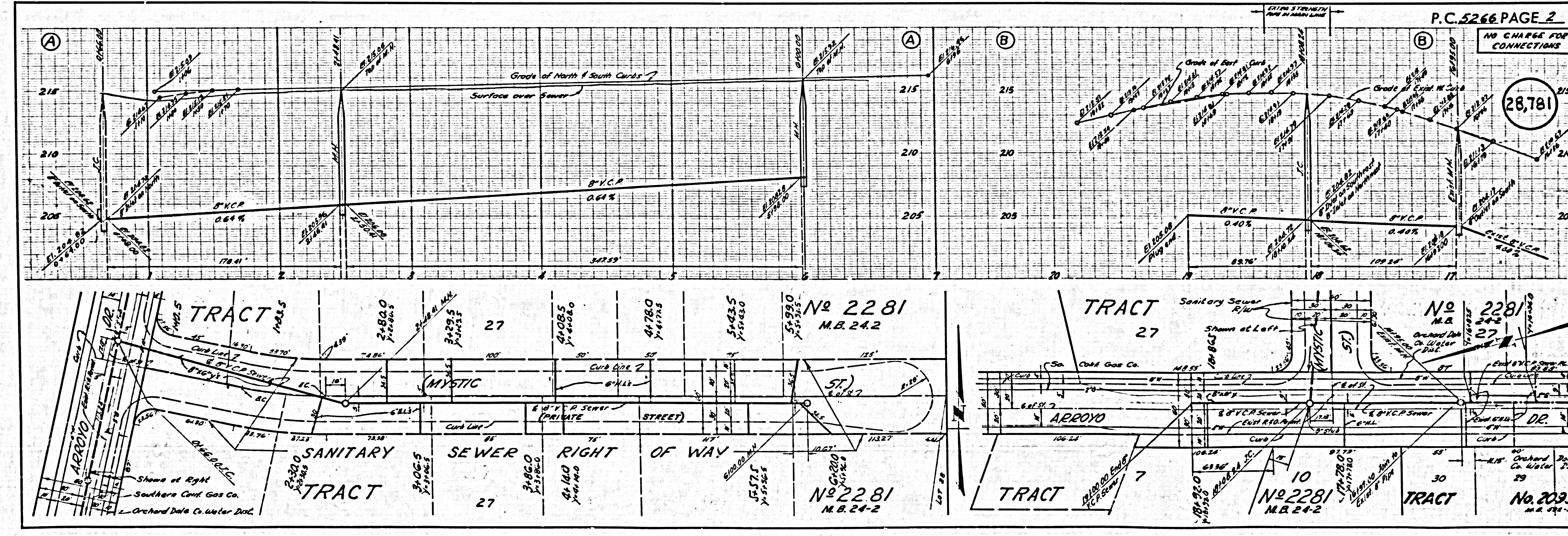
APPROVAL OF THIS PLAN BY THE COUNTY OF LOS ANGELES DOES NOT CONSTITUTE A REPRESENTATION AS TO THE ACCURACY OF THE LOCATION OF OR THE EXISTENCE OR NON-EXISTENCE OF ANY UNDERGROUND UTILITY PIPE, OR STRUCTURE WITHIN THE LIMITS OF THIS PROJECT. THIS NOTE APPLIES TO ALL PAGES.

IF WORK IS TO BE DONE IN A STATE HIGHWAY, A PERMIT MUST BE OBTAINED FROM THE STATE OF CALIFORNIA, DIVISION OF HIGHWAYS, 126 SOUTH SPRING STREET.

COUNTY OF LOS ANGELES, CALIFORNIA

APPROVED, JOHN A. LAMBIE, COUNTY ENGINEER
 APPROVED, C. R. CAMPBELL, CHIEF ENGINEER
 CO. ENGR. NO. 12
 BY: *C. E. Lambie* ASST. SANITATION ENGINEER
 BY: *C. R. Campbell* OFFICE ENGINEER
 CHECKED BY: *R. F. Worley* 1-28-60
 OFFICE OF COUNTY ENGINEER, BLDG. C. E. NO. 11636

SUBMITTED BY: *John L. Lambie* 1-25-60
 429 CORRIE ST. Raymond Engineer, Reg. C.E. No. 3671



P.C. 5266 PAGE 2

NO CHARGE FOR CONNECTIONS

(28,781)

No 2281
 M.B. 242

No 2281
 M.B. 242

No 2281
 M.B. 242

No 20936
 M.B. 242