

B.M.-KK 205, Elev. 454-936, CSFB 1982-77
 Mountain Ave. E. Duarte Rd., S.E. Cor.
 Bl. Spk. in curb 3' south of S. End of Curb Return.

DUARTE BLDG. DIST. NO. 5.02

PROFILE ALIGNMENT AND GRADE OF P.C. 5267
 SANITARY SEWERS PAGE 1
 TO BE CONSTRUCTED IN J.N. 0875.27

TRACT 24594

PRIVATE CONTRACT NO. 5267

W.S. 46

2 SHEETS; 3 PAGES

SCALE: VERT. 1" = 4' HORIZ. 1" = 40' SEPT, 1959

28289

PREPARED IN THE OFFICES OF
Pond Engineering Co.

By Marshall E. Pond
 REG. C. E. NO. 8292

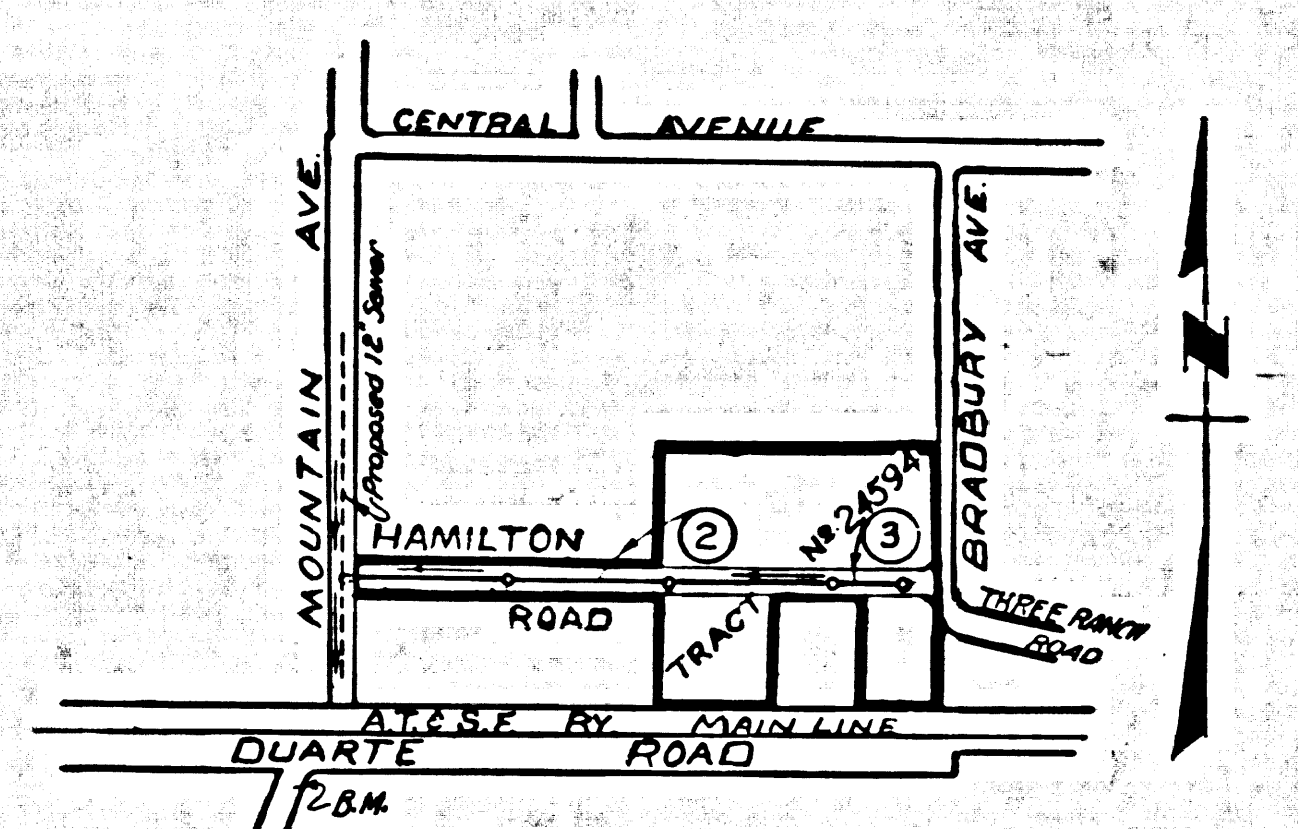
FOR LEGEND SEE PLAN NO. S-A-64

- NOTES:
1. PROVIDE STAKES ON THE PROPERTY LINE OR PROPERTY LINES PRODUCED AT RIGHT ANGLES TO THE SEWER LINE AT THE CENTER LINE OF EACH MANHOLE.
 2. NO REPRESENTATIVE OF THE CITY ENGINEER WILL SURVEY OR LAY OUT ANY PORTION OF THE WORK.
 3. THE OWNER OR HIS AUTHORIZED REPRESENTATIVE SHALL FURNISH THE CITY ENGINEER WITH GRADE SHEETS AND STATIONING FOR ALL HOUSE LATERALS AND Y BRANCHES AND SHALL PROVIDE STAKES FOR THEM AT THEIR PROPER LOCATIONS WITH STATIONING PLAINLY MARKED. ANY CHANGE IN LOCATION SHALL BE REQUESTED IN WRITING BY THE OWNER OR HIS REPRESENTATIVE.
 4. THE PRIVATE ENGINEER SHALL FURNISH THE HOUSE LATERAL DEPTH AT THE PROPERTY LINE BELOW THE TOP OF CURB ELEVATION FOR EACH HOUSE LATERAL ON THE GRADE SHEET.
 5. NO REVISIONS SHALL BE MADE IN THESE PLANS WITHOUT THE APPROVAL OF THE CITY ENGINEER.
 6. USE STANDARD STRENGTH PIPE EXCEPT AS NOTED.
 7. USE CEMENT MORTAR OR "WEDGE-LOCK" OR "SPEED-SEAL" FOR ALL V.C.P. JOINTS PER SPECS., SECS. 36 & 48.
 8. RESURFACE ALL TRENCH WITHIN PAVED AREA TO MEET L.A. COUNTY ROAD DEPT. OR CALIF. STATE HIGHWAY REQUIREMENTS IN ACCORDANCE WITH PERMITS.
 9. ENCASE FOUR FEET OF SEWER AT POINTS OF INTERFERENCE WITH POLES, CASE III, S-172.
 10. HOUSE LATERALS TO BE CONSTRUCTED WITH INVERTS AT PROPERTY LINE 6 FEET BELOW CURB GRADE EXCEPT AS NOTED.
 11. ALL STRUCTURES SHALL BE BRICK SEWER STRUCTURES, S-104.
 12. FOR ALLOWABLE LEAKAGE TEST USE FORMULA NO. 1, SPECS., SEC. 54.
 13. MANHOLE TOPS IN UNAPPROVED RIGHTS-OF-WAY TO BE SIX INCHES ABOVE FINISHED GRADE.
 14. THE CONTRACTOR SHALL NOTIFY THE CONSTRUCTION & STORM DRAIN DIVISION BY TELEPHONE, MADISON 9-4747, EXT. 342, AT LEAST TWENTY-FOUR HOURS BEFORE STARTING ANY WORK UNDER THIS CONTRACT.

WORDS IN CIRCLES AT ENDS OF HOUSE LATERALS INDICATE 1/4" SHALL BE LAID HORIZONTAL AND HOUSE LATERALS SHALL BE CONSTRUCTED WITH 1/4" PER FOOT TO PROPERTY LINE.
 FIGURES IN CIRCLES AT ENDS OF HOUSE LATERALS INDICATE HOUSE LATERALS SHALL BE CONSTRUCTED WITH 1/4" PER FOOT TO PROPERTY LINE.

NO CHARGE FOR CONNECTIONS
 From Contract 9-24-59

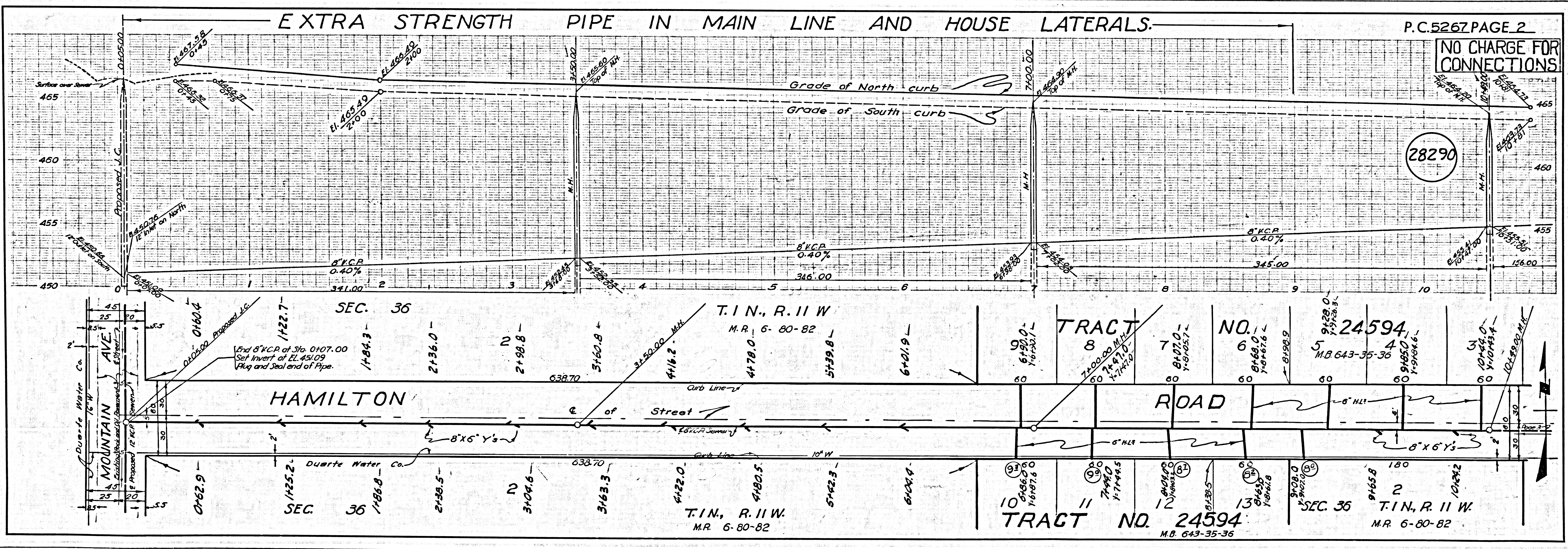
ISSUE NO PERMITS UNTIL
 OUTLET SEWER IS CONSTRUCTED
 IN MOUNTAIN AVENUE



INDEX MAP
 SCALE 1" = 600'
 TRACT NO. 24594
 P.C. 5267

NOTE:
 GRADES TO WHICH THIS IMPROVEMENT IS TO BE CONSTRUCTED ARE SHOWN ON PLANS AND PROFILES. GRADE POINTS FOR TOP OF CURBS, CENTER LINE OF STREETS, OR CENTER LINE OF ALLEYS ARE SHOWN BY CIRCLES ON PROFILES. AT ALL POINTS BETWEEN DESIGNATED POINTS THE GRADE SHALL BE ESTABLISHED SO AS TO CONFORM TO A STRAIGHT LINE DRAWN BETWEEN SAID DESIGNATED POINTS.
 ELEVATIONS ARE IN FEET ABOVE U.S.C. & G.S. SEA LEVEL DATUM OF 1929.
 THIS DRAWING AND THE DATA HEREON ARE HEREBY MADE A PART OF THE SPECIFICATIONS.
 WORK SHALL BE CONSTRUCTED ACCORDING TO SPECIFICATIONS ON FILE IN THE OFFICE OF THE CITY ENGINEER AND SHALL BE PROSECUTED ONLY IN THE PRESENCE OF THE CITY ENGINEER.
 BEFORE WORK CAN BE STARTED, THE CONTRACTOR MUST OBTAIN A PERMIT TO EXCAVATE IN CITY STREETS FROM THE L.A. COUNTY ROAD DEPT., DISTRICT OFFICE NO. 1, AND MAKE A DEPOSIT WITH THE CITY ENGINEER, ROOM 324 PAN AMERICAN BUILDING, 733 SO. BROADWAY SUITE 201 TO COVER THE COST OF CONSTRUCTION INSPECTION AND RECORD PLANS.
 APPROVAL OF THIS PLAN BY THE CITY OF DUARTE DOES NOT CONSTITUTE A REPRESENTATION AS TO THE ACCURACY OF THE LOCATION OR OF THE EXISTENCE OR NON-EXISTENCE OF ANY UNDERGROUND UTILITY PIPE, OR STRUCTURE WITHIN THE LIMITS OF THIS PROJECT. THIS NOTE APPLIES TO ALL PAGES.
 IF WORK IS TO BE DONE IN A STATE HIGHWAY, A PERMIT MUST BE OBTAINED FROM THE STATE OF CALIFORNIA, DIVISION OF HIGHWAYS, 120 SOUTH SPRING STREET.

CITY OF DUARTE, CALIFORNIA
 APPROVED JOHN A. LAMIE, CITY ENGINEER
 APPROVED C.R. COMPTON, CHIEF ENGINEER
 CO. SAN. DIST. NO. 22
 BY P.E. Pond ASSISTANT SANITATION ENGINEER
 BY M. P. Brander OFFICE ENGINEER
 CHECKED BY S. L. Wida 9-30-59
 OFFICE OF CITY ENGINEER, REG. C. E. NO. 9406
 SUBMITTED: N. P. Brander
 SAN GABRIEL VALLEY REGIONAL ENGINEER



P.C. 5267 PAGE 2

NO CHARGE FOR CONNECTIONS

28290

TRACT NO. 24594
 M.B. 643-35-36
 SEC. 36
 T.1N., R.11W.
 M.R. 6-80-82

NO CHARGE FOR CONNECTIONS

28291

