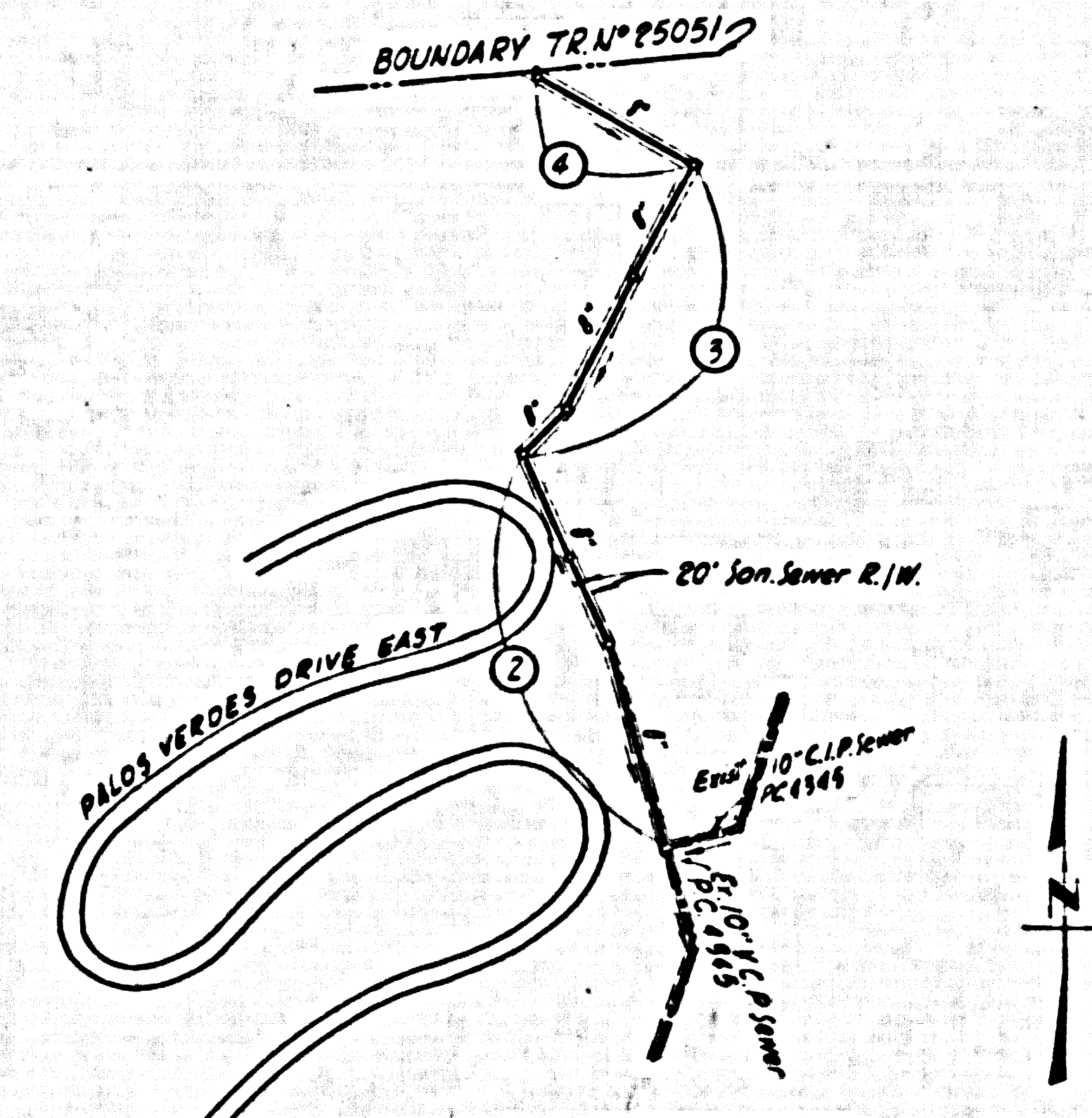


BM. U.S.G.S. N-168 (U.S. 2876) Palos Verdes
 Dr. East of Picardie Rd. 35' E. of E. of PK Dr.
 East E 34' S. of E. of Picardie Rd. 31st. Disc
 stamped "N-168-1933" set in top of concrete
 post. 1553 adj. elev. 769.743 FB 1357-14 BM 36-8



INDEX MAP
 OUTFALL FOR
 TRACT NO 25051
 P.C. 5268
 SCALE 1" = 900'

Revised Finished Surface and Sewer
 Grooves, added baffle detail
E.P. Brown
 Office of County Engineer
 Approval hereby given contingent upon a field
 investigation of the completed sewer and all
 grading relating thereto by the County Engineer
 or his authorized representative

NO CHARGE FOR
 CONNECTIONS
L. Lucke 10-27-59

LOMITA BLDG. DIST. NO. 7.1

PROFILE ALIGNMENT AND GRADE OF P.C. 5268
 SANITARY SEWERS PAGE 1
 TO BE CONSTRUCTED IN JN 035164
 OUTFALL FOR TRACT NO 25051
 IN SANITARY SEWER R.I.W.

PRIVATE CONTRACT NO. 5268

W.S. 27
 2 SHEETS, 4 PAGES

SCALE: VERT. F-1" = 10' Sept. 1959

PREPARED IN THE OFFICES OF
 ENGINEERING SERVICE CORPORATION

29,216

By: *E.P. Brown*
 REG. C. E. NO. 1692
 FOR LEGEND SEE PLAN NO. S-A-64

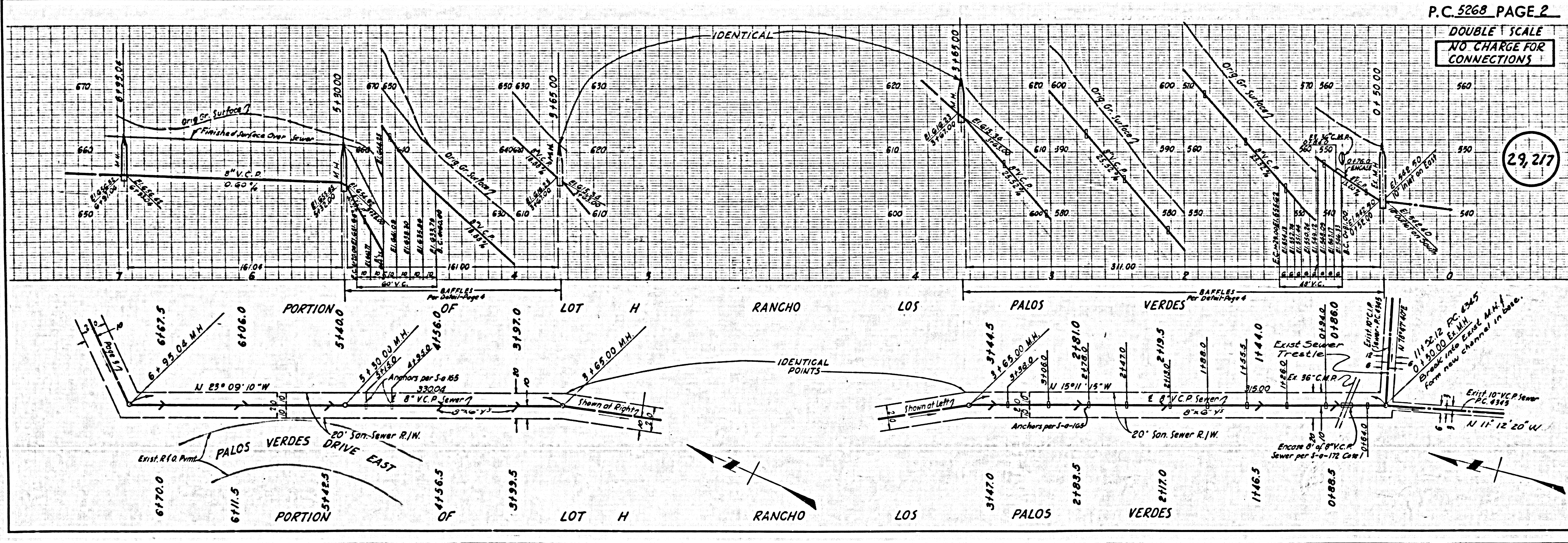
- NOTES
1. PROVIDE STAKES ON THE PROPERTY LINE OR PROPERTY LINES PERPENDICULAR AT RIGHT ANGLES TO THE SEWER LINE AT THE CENTER LINE OF EACH MANHOLE.
 2. NO REPRESENTATIVE OF THE COUNTY ENGINEER WILL SURVEY OR LAY OUT ANY PORTION OF THE WORK.
 3. THE OWNER OR HIS AUTHORIZED REPRESENTATIVE SHALL FURNISH THE COUNTY ENGINEER WITH GRADE SHEETS AND STATIONING FOR ALL HOUSE LATERALS AND Y BRANCHES AND SHALL PROVIDE STAKES FOR THEM AT THEIR PROPER LOCATIONS WITH STATIONING PLAINLY MARKED. ANY CHANGE IN LOCATION SHALL BE REQUESTED IN WRITING BY THE OWNER OR HIS REPRESENTATIVE.
 4. THE PRIVATE ENGINEER SHALL FURNISH THE HOUSE LATERAL DEPTH AT THE PROPERTY LINE BELOW THE TOP OF CURB ELEVATION FOR EACH HOUSE LATERAL ON THE GRADE SHEET.
 5. NO REVISIONS SHALL BE MADE IN THESE PLANS WITHOUT THE APPROVAL OF THE COUNTY ENGINEER.
 6. USE STANDARD MANHOLE FRAMES AND COVERS, S-117, CIRCULAR.
 7. USE STANDARD TRENCH PIPE EXCEPT AS NOTED.
 8. USE CEMENT PORTLAND OR "WIDON-LOCK" OR "SPRIN-SEAL" FOR ALL V.C.P. JOINTS PER SPEC. SECS. 56 & 62.
 9. RESURFACE ALL TRENCH WITHIN PAVED AREA TO MEET L.A. COUNTY ROAD DEPT. OR CALIF. STATE HIGHWAY REQUIREMENTS IN ACCORDANCE WITH PERMITS.
 10. ENCASE FOUR FEET OF SEWER AT POINTS OF INTERFERENCE WITH POLES, CASE III, S-6-172.
 11. UNDESIGNED SEWER CONNECTIONS TO EXISTING SEWERS SHALL BE PROHIBITED.
 12. ALL STRUCTURES SHALL BE BRICK SEWER STRUCTURES, S-104, EXCEPT AS NOTED.
 13. FOR ALLOWABLE LEAKAGE TEST USE FORMULA NO. 1, SPEC. SEC. 54.
 14. MANHOLE TOPS IN UNIMPROVED RIGHTS-OF-WAY TO BE SIX INCHES ABOVE FINISHED GRADE.
 15. THE CONTRACTOR SHALL NOTIFY THE CONSTRUCTION & STORM DRAIN DIVISION BY TELEPHONE, MADISON 9-800, EXT. 242, AT LEAST TWENTY-FOUR HOURS BEFORE STARTING ANY WORK UNDER THIS CONTRACT.
 16. STANDARD SPECIFICATION DATED MAY 15, 1959 APPLY IN THE CONSTRUCTION OF THIS PROJECT.

ENGINEERING SERVICE CORPORATION
 1127 W. WASHINGTON BLVD.
 LOS ANGELES 15, CALIF. RL 9-7281

REVISIONS		TRACED BY	WB		
		DES'G'D BY	J.D.		
		CK'D BY	C.M.R.		
		SUBMITTED			
SUB STRUCTURES OK'D					
W. O. NO.	DWG. NO.	DATE	SCALE	L. B.	P. B.
6777-89		SEPT - 59	AS SHOWN		

NOTE:
 GRADES TO WHICH THIS IMPROVEMENT IS TO BE CONSTRUCTED ARE SHOWN ON PLANS AND PROFILE GRADE POINTS FOR TOP OF CURB, CENTER LINE OF STREET, OR CENTER LINE OF ALLEY'S ARE SHOWN BY CIRCLES ON PROFILES. AT ALL POINTS BETWEEN DESIGNATED POINTS THE GRADE SHALL BE ESTABLISHED SO AS TO CONFORM TO A STRAIGHT LINE DRAWN BETWEEN SAID DESIGNATED POINTS.
 ELEVATIONS ARE IN FEET AS THE U.S.C. & G.S. SEA LEVEL DATUM OF 1929.
 THIS DRAWING AND THE DATA HEREON ARE HEREBY MADE A PART OF THE SPECIFICATIONS.
 WORK SHALL BE CONSTRUCTED ACCORDING TO SPECIFICATIONS ON FILE IN THE OFFICE OF THE COUNTY ENGINEER AND SHALL BE PROSECUTED ONLY IN THE PRESENCE OF THE COUNTY ENGINEER.
 BEFORE WORK CAN BE STARTED, THE CONTRACTOR MUST OBTAIN A PERMIT TO EXCAVATE IN COUNTY SHEETS FROM THE L.A. COUNTY ROAD DEPT., DISTRICT OFFICE NO. 3, AND MAKE A DEPOSIT WITH THE COUNTY ENGINEER, ROOM 324 PAN AMERICAN BUILDING, 325 SO. BRADWAY SUBJECT TO COVER THE COST OF CONSTRUCTION INSPECTION AND RECORD PLANS.
 APPROVAL OF THIS PLAN BY THE COUNTY OF LOS ANGELES DOES NOT CONSTITUTE A REPRESENTATION AS TO THE ACCURACY OF THE LOCATION OR OF THE EXISTENCE OR NON-EXISTENCE OF ANY UNDERGROUND BRITLY PIPE, OR STRUCTURE WITHIN THE LIMITS OF THIS PROJECT. THE NOTE APPLIES TO ALL PAGES.
 IF WORK IS TO BE DONE IN A STATE HIGHWAY, A PERMIT MUST BE OBTAINED FROM THE STATE OF CALIFORNIA, DIVISION OF HIGHWAYS, 120 SOUTH BRIDGE STREET.

COUNTY OF LOS ANGELES, CALIFORNIA
 APPROVED, JOHN A. LAMBE, COUNTY ENGINEER
 APPROVED, C.R. COMPTON, CHIEF ENGINEER
 CO. SEAL NO. 5
 BY: *E.P. Brown* S.E.T. SANITATION ENGINEER
 BY: *E.P. Brown* P.C. OFFICE ENGINEER
 CHECKED BY: *J.K. Onda 10-27-59*
 OFFICE OF COUNTY ENGINEER, REG. C. E. NO. 9486



P.C. 5268 PAGE 2

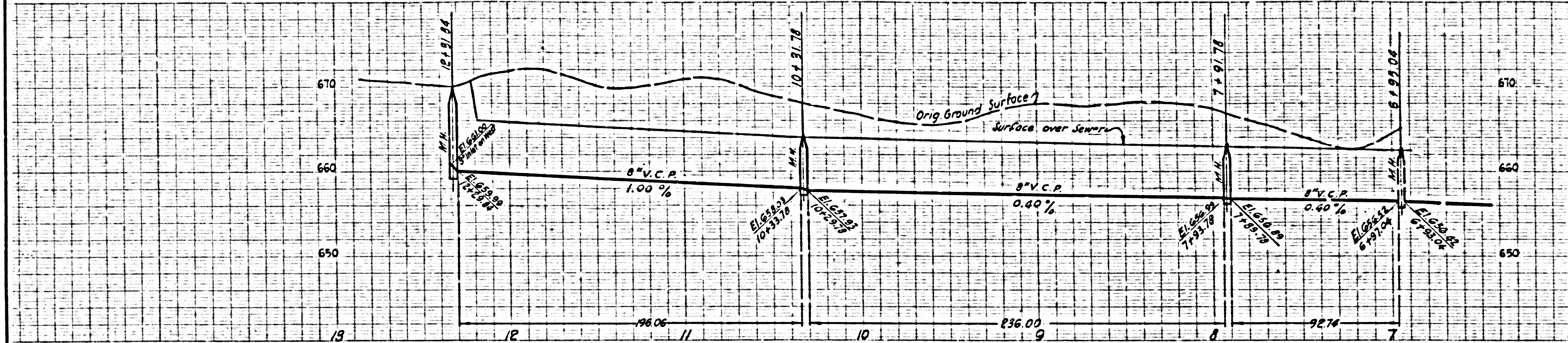
DOUBLE SCALE
 NO CHARGE FOR
 CONNECTIONS

29,217

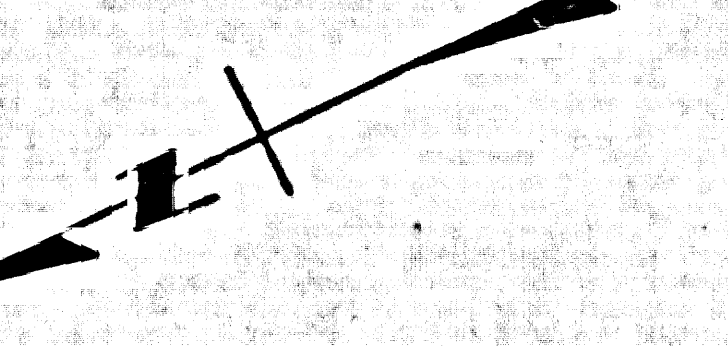
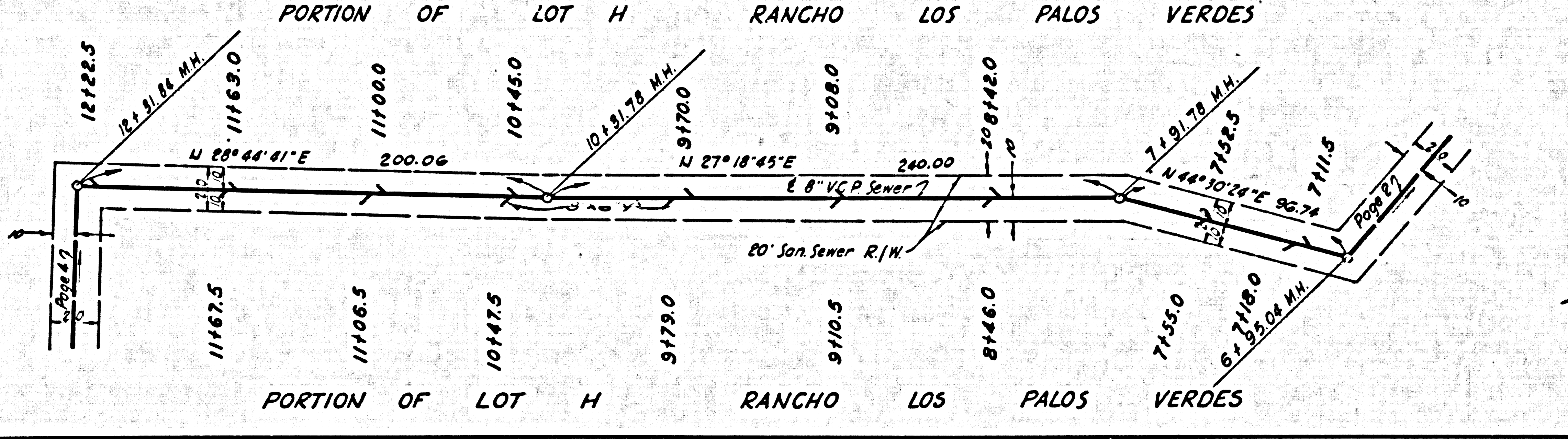
BR 10-26-59 VD

Griswold

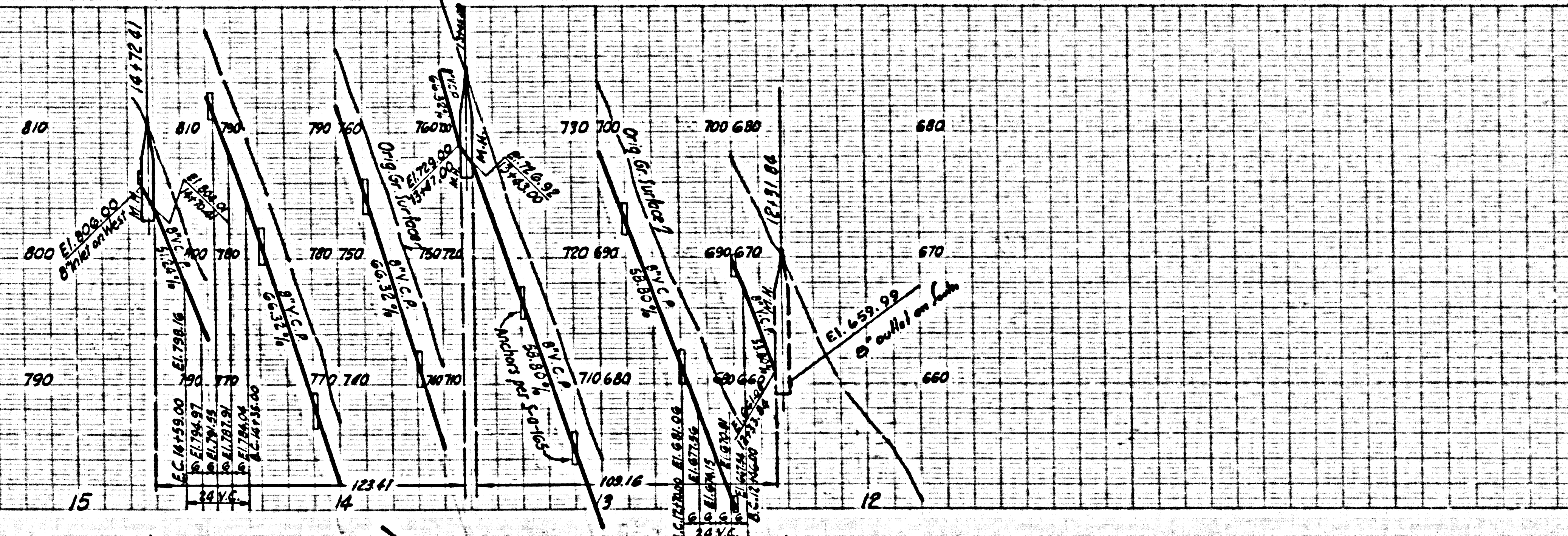
DOUBLE SCALE
NO CHARGE FOR
CONNECTIONS



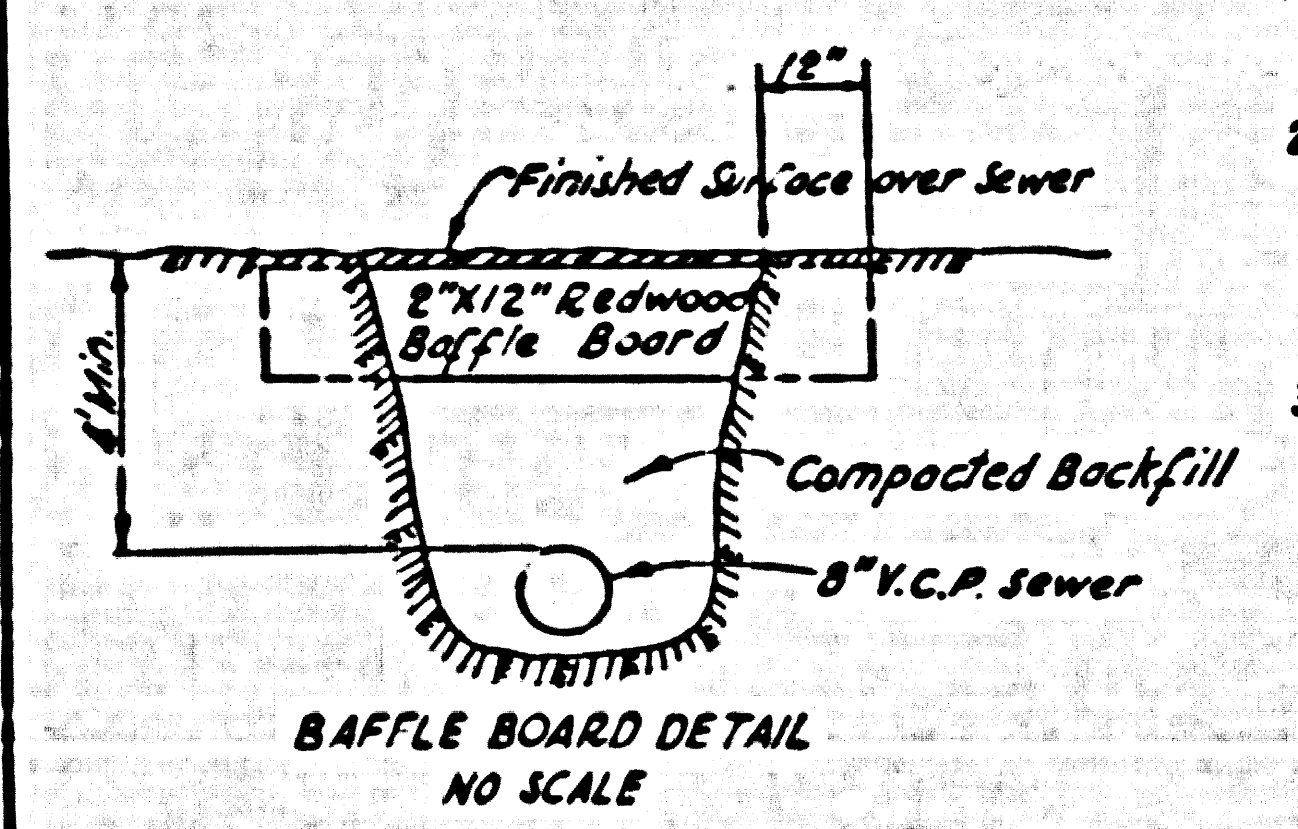
29,218



DOUBLE SCALE
NO CHARGE FOR
CONNECTIONS



29,219



- NOTES
1. Each end of Baffle Board will extend one foot into undisturbed ground.
 2. The upper layer of backfill to be one foot minimum of topsoil. Topsoil shall be tamped in place and planted with mustard and rye grass seed and adequately watered until growth is restored.
 3. Baffle Boards shall be spaced so that the top of the lower board shall be level with the bottom of the next higher board.

